

SS360 Mobile Mapping System (MMS)

Advanced Vision Systems for Automated Transport Infrastructure Mapping

With SS360 MMS, you can capture high-resolution data without disrupting traffic. Our system uses LiDAR and IoT for precise mapping of highways and railways, providing critical insights for infrastructure management.



Seamless Integration and Easy Operation

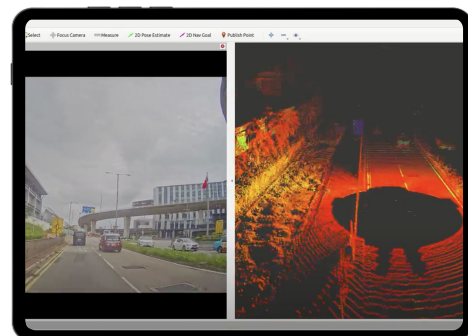


SS360 MMS integrates effortlessly with existing infrastructure management systems.

Car mount guarantees quick setup and operation, minimizing training time and maximizing efficiency.

High-Speed, High-Resolution Mapping

With up to 10 million data point per second, the SS360 MMS offers accurate mapping at speeds up to 100 km/h.



SS360 Mobile Mapping System (MMS)



Specifications

Physical

- 30 kg total weight (sensors, controller, cabling and data storage PC)
- Optional narrow angle, longer range sensors

Environmental

- IP65 rated powder-coated aluminum housing

Performance

- Ultra wide Horizontal and Vertical FoV
- 10 million points per second
- +/- 2cm absolute accuracy
- Non-proprietary output files:
 - Geodatabase SHP Files;
 - LAS Point Cloud;
 - JPG Files;
 - CSV Report

Typical Applications

- Transport Infrastructure Mapping
- City Modeling
- GIS Mapping and Asset Management

Seamless Workflow

A handy touch-screen and the Kodify SpatialTwin platform facilitate the operator's task in the field by providing real-time visualization of acquired scan data and imagery.

The precise geo-referenced data and images can be exported to industry standard file formats.

