

The Mega Green Construction Program



MEGA GREEN NATURE

© Copyright 2025 | Published by Mega Green Nature

Scope

This book provides an in-depth exploration of agricultural construction needs, highlighting the role of infrastructure in enhancing productivity.

It explains how farmers can access Mega Green Nature's construction services and the long-term benefits of participating in the program. The book is intended for both digital and print distribution across platforms and the Mega Green Nature website.

© Copyright 2025 | Mega Green Nature | Published March 16, 2025

All rights reserved. No part of this publication may be reproduced, distributed, or transmitted in any form without prior written permission from the publisher.

MEGA GREEN NATURE

Mutebi street Lwamaggwa T/C Rakai District
P.O Box 221077, Masaka Uganda

Designer

Benjamin William Ssesanga, Layers Studio

Acknowledgments

We express our gratitude to the farmers and agricultural experts who shared their insights, the engineers and construction specialists who contributed their expertise, and the Mega Green Nature team for their commitment to improving agricultural infrastructure.

About Mega Green Nature

Mega Green Nature is an agricultural company committed to supporting small-scale farmers through innovative solutions in farm management, seedling programs, and infrastructure development. The Construction Program is one of its flagship initiatives aimed at enhancing productivity and sustainability.

Recommended Citation

Mega Green Nature. (2025). Mega Green Nature: The Construction Program. Mega Green Nature Publications.

Contents

Introduction

- Why the Construction Program was Created
- Challenges Faced by Farmers Due to Poor Infrastructure

Understanding the Mega Green Construction Program

- How Farmers Can Join the Program
- What Farmers Gain from Joining
- Why Farmers Should Join
- Program Impact: Infrastructure Projects, Farmers Benefiting, and Investment in Rural Development

Key Agricultural Infrastructure Solutions

- Agricultural Infrastructure: Irrigation, Storage, Drying Stations, and Access Roads
- Residential Buildings: Affordable Housing for Farmers and Rural Communities
- Commercial Infrastructure: Warehouses, Processing Plants, and Business Premises

Economic and Financial Aspects

- Financial Collaboration with Mega Green Nature
- Available Financing Plans and Loan Conditions
- Increased Productivity and Revenue
- Success Stories from Program Participants



Introduction

Why the Construction Program Was Created

Infrastructure is a critical component of agricultural productivity, rural development, and commercial success. Many farmers and small business owners struggle with inadequate storage facilities, poor road networks, and lack of irrigation systems, leading to high post-harvest losses and limited market access.

Mega Green Nature launched the Construction Program to address these challenges by providing tailored infrastructure solutions that enhance efficiency, reduce losses, and improve living and working conditions. By integrating modern construction techniques with sustainable farming practices, the program ensures long-term growth and stability for farmers and entrepreneurs alike.

Challenges Faced Due to Poor Infrastructure

1. Limited Access to High-Quality Seedlings – Farmers often Post-Harvest Losses – Without proper storage and drying stations, a significant portion of harvested crops is lost to spoilage.
2. Limited Market Access – Poor road networks make it difficult for farmers to transport their produce to buyers, leading to lower profits.
3. Water Scarcity – Lack of irrigation systems forces farmers to rely solely on rainfall, making farming unpredictable and less productive.
4. Housing Deficiencies – Many rural communities lack adequate housing, affecting the well-being and productivity of farmers.
5. Limited Commercial Growth – Entrepreneurs struggle to find well-constructed business premises, limiting opportunities for expansion and job creation. to find affordable, disease-resistant coffee seedlings.



Understanding the Construction Program

How Farmers and Businesses Can Join the Program

Participants can enroll in the Mega Green Construction Program through the following steps:

1. Application – Submit an application via the Mega Green Nature website or a designated field office.
2. Site Assessment – Our team evaluates the applicant's infrastructure needs.
3. Construction & Installation – Approved projects receive tailored infrastructure solutions.
4. Training & Support – Participants learn how to maintain and optimize their new infrastructure.

What Participants Gain from Joining

Participants in the program receive:

- Custom-Built Agricultural, Residential, and Commercial Infrastructure
- Expert Training & Maintenance Support
- Financial Assistance & Flexible Payment Plans
- Market Access Improvement

Why They Should Join

This program provides sustainable solutions to infrastructure challenges, increasing productivity and profitability. Improved facilities lead to better harvest management, enhanced living conditions, and stronger business operations.



Program Impact: Infrastructure Projects, Farmers Benefiting, and Investment

Since its inception, the Mega Green Nature Construction Program has significantly impacted rural farming communities and businesses:

- Number of Farmers and Businesses Benefiting: Over 2,00 participants have received infrastructure support.
- Number of Infrastructure Projects Completed: Mega Green Nature has developed 200+ projects, including agricultural, residential, and commercial structures.

200+

members Joined

200+

projects



Economic and Financial Aspects

Financial Collaboration with Mega Green Nature

Mega Green Nature works with farmers and businesses to offer flexible financial solutions for infrastructure development. The program provides tailored financial assistance based on individual needs and project feasibility.

Available Financing Plans and Loan Conditions

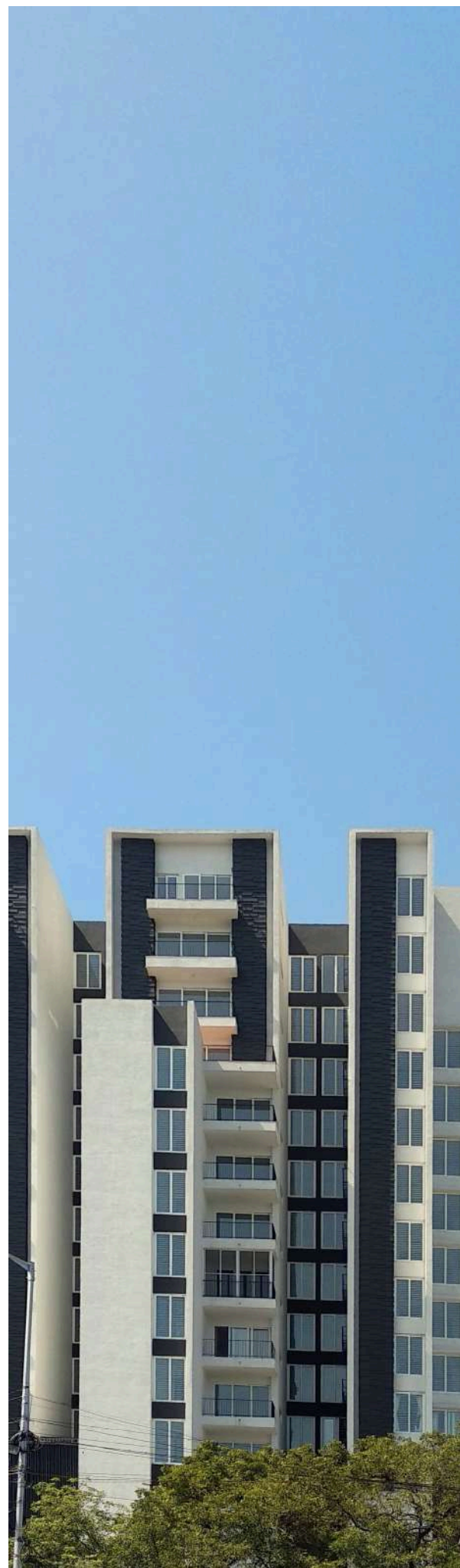
Mega Green Nature offers several financing options:

1. Installment Payments – Farmers and business owners can pay for construction projects in scheduled installments.
2. Subsidized Construction Costs – Partial financial aid for eligible applicants.
3. Microloans & Grants – Low-interest loans and grants to support infrastructure development.
4. Revenue-Based Repayment Plans – Farmers can repay based on seasonal earnings.

Increased Productivity and Revenue

With improved infrastructure, participants experience:

- Higher Yields & Business Growth – Better facilities lead to increased production.
 - Reduced Losses – Proper storage and processing stations minimize spoilage.
 - Better Market Prices – Improved logistics enhance competitiveness.
-



We Construct Residential Homes.



We Construct Residential Homes.



We Construct Apartments



We Construct Commercial Buildings



LEARN MORE

megagreennature.com

Call: 075-104-8703

From Seed to Success: Unlocking Profit, Sustainability, and
Community Impact Through Advanced Coffee Seedling
Solutions



MEGA GREEN NATURE

© Copyright 2025 | Published by Mega Green Nature