

PROJECT NAME: Crave Kitchen & Bistro | **ADDRESS:** Sandy Springs, GA | **SQUARE FOOTAGE:** 4,000 sqft
PROJECT TYPE: Commercial- Tenant-Improvement - Pre-Construction (2025)

CRAVE KITCHEN & BISTRO



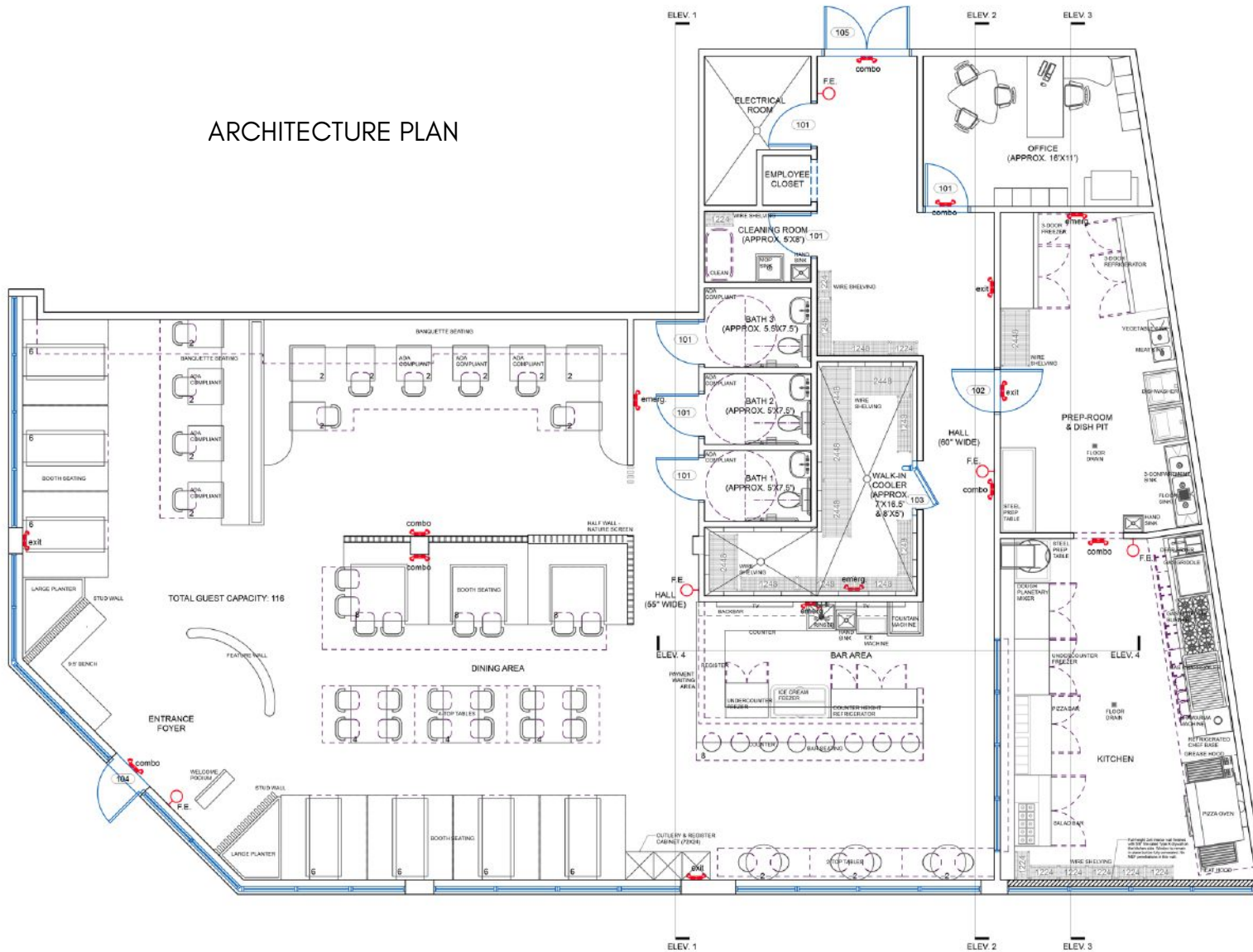
PROJECT OVERVIEW

Crave Kitchen & Bistro represents a thoughtful exercise in adaptive reuse, transforming a compact commercial shell - formerly a tattoo studio - into a sophisticated Mediterranean-inspired dining venue. Located in Sandy Springs, Georgia, the project demonstrates how targeted architectural intervention can achieve spatial richness and material warmth without excessive structural change or waste.

DESIGN STRATEGY

The design strategy centered on layering—spatial, material, and atmospheric. Existing walls were selectively demolished to create a continuous dining area that accommodates up to 120 guests. Within this space, programmatic zoning was established not through solid partitions but through a play of texture, light, and form. Seating arrangements shift seamlessly from intimate four-person booths along the windows to long banquette seating against a rustic brick wall. The central zone introduces U-shaped group booths framed by slender stud walls and vertical vegetation, defining space without enclosure.

ARCHITECTURE PLAN



PROPOSED DOOR SCHEDULE

DES.	SIZE (W/H)	MATERIAL	FRAME	NOTES
101	36x9	WOOD	WOOD	LOCKSET
102	36x9	WOOD	WOOD	DOUBLE-ACTING SWING DOOR
103	36x4	STAINLESS STEEL	METAL FRAME	WALK-IN-COOLER DOOR
104	40x4	EXISTING	EXISTING	EXISTING EXIT DOOR
105	70x4	EXISTING	EXISTING	EXISTING EXIT DOOR

PROPOSED FINISH SCHEDULE

FLOORING:	RESTROOM:	VINYL COMPOSITION TILE
	KITCHEN, PREP, WIC, DRY STORAGE:	POLISHED CONCRETE
	DINING ROOM, OFFICE:	LVP FLOORING
	BAR:	POLISHED CONCRETE
WALLS:	RESTROOM WALLS:	PAINTED GYP. BD. (WIPEABLE) / CERAMIC TILE F.R.P. (WIPEABLE)
	KITCHEN WALLS:	PAINTED GYP. BD. (WIPEABLE) / CERAMIC TILE
	DINING ROOM WALLS:	PAINTED GYP. BD. / 'FAUX BRICK' / CERAMIC TILE
	CORRIDOR WALLS:	PAINTED GYP. BD. / 'FAUX BRICK' / CERAMIC TILE
CEILING:	RESTROOM CEILING:	ACOUSTIC CEILING TILE (2'x4 & 2'x2 GRID)
	KITCHEN CEILING:	ACOUSTIC CEILING TILE & METAL MESH PANEL SYSTEM (2'x4 GRID)
	DINING CEILING:	ACOUSTIC CEILING TILE & METAL MESH PANEL WITH EMBEDDED TRACK SYSTEM (2'x4 GRID)

GENERAL NOTES

- GENERAL CONTRACTOR AND SUB-CONTRACTORS SHALL FIELD VERIFY ALL MEASUREMENTS PRIOR TO INSTALLATION OR FABRICATION OF COMPONENTS OF THE CONSTRUCTION. COORDINATE CONSTRUCTION OF ROUGH OPENINGS AT DOORS AND WINDOWS WITH MANUFACTURER'S RECOMMENDED INSTALLATION AND TOLERANCES.
- DIMENSIONS NOTED ON FLOOR PLAN ARE FROM FACE TO FINISH TO FACE TO FINISH. GC TO COORDINATE LAYOUT DIMENSIONS WITH PARTITION TYPES AS REQUIRED FOR PROPER LAYOUT.
- GENERAL CONTRACTOR TO PROVIDE SUBMITTAL INFORMATION TO OWNER, ARCHITECT, AND/OR ENGINEERS FOR REVIEW PRIOR TO PURCHASE, FABRICATION OR INSTALLATION OF SPECIFIED PRODUCT OR SYSTEM.
- SEE PLAN "PROPOSED EQUIPMENT PLAN" FOR KITCHEN EQUIPMENT SCHEDULE.
- SEE KITCHEN EQUIPMENT PLANS FOR ALL SPECIFICATIONS AND INFORMATION PERTAINING TO KITCHEN EQUIPMENT, BAR EQUIPMENT, PLUMBING FIXTURES, AND APPLIANCES. CONTACT OWNER OR ARCHITECT IN THE EVENT THAT ADDITIONAL INFORMATION IS REQUIRED.
- TABLES, CHAIRS, BARSTOOLS, AND MISCELLANEOUS FURNISHINGS TO BE PROVIDED BY OWNER (TYPICAL).
- EXISTING HVAC SYSTEM TO BE RE-USED, REPAIR, BALANCE, AND RECONFIGURE DUCTWORK AND RETURNS AS REQUIRED.

PARTITION NOTES

- ALL NEW INTERIOR, NON-BEARING WALLS TO BE 4" METAL STUD FRAMING WITH ONE LAYER 1/2" THICK GYPSUM BOARD EACH SIDE. FINISH AS SCHEDULED.

PROGRAM PLAN



MATERIALS

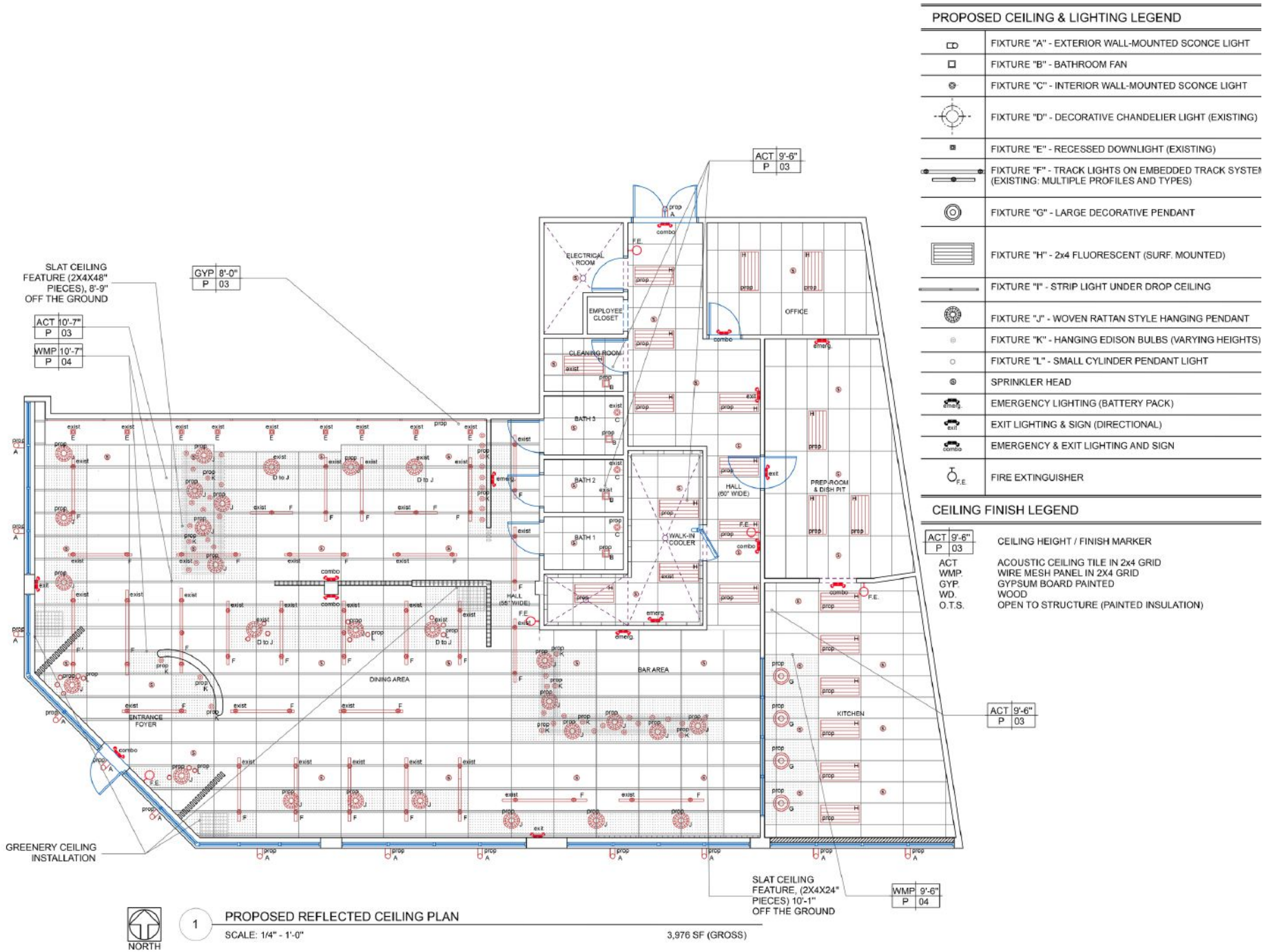


Materially, the interior draws from Mediterranean precedents—brick, plaster, and wood juxtaposed with greenery and filtered light. The introduction of hand-troweled plaster walls softens the industrial shell, while suspended wooden slats, interwoven with hanging vegetation, create both acoustic and visual depth. Planters line the edges of banquettes and windows, and ivy cascades between structural elements to reinforce a sense of natural continuity. Turkish-style ceramic plates adorn select walls, bringing artisanal texture and cultural reference.



LIGHTING

Lighting is treated as an integral material. Woven pendants and soft strip lighting establish a layered ambience, transitioning the space from day to night with subtle gradations.



COLOR STORY

Bar Counter Top
MW 433 Amber Pine

Linewood Ceramic Tile + Matching Pencil Bar Treatment

Lighting and Greenery

Brick Wall Paper

Wood Stain MW 433 Amber Pine

ALABASTER
SW 7008
MAIN WALLS

SAND
EPODEX MICROCEMENT
FEATURE WALL

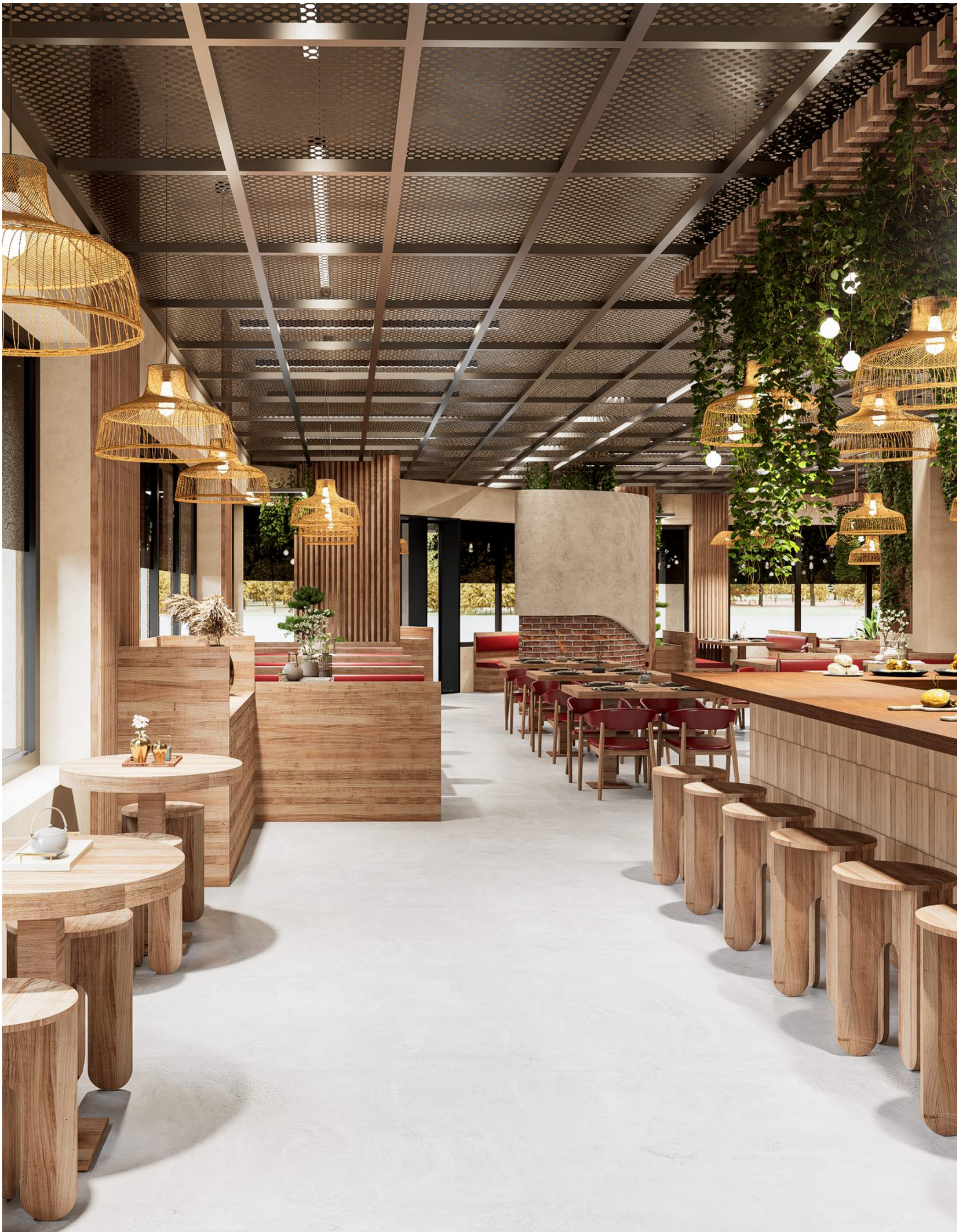
BURGUNDY
6 E 1 F 2 B
SEAT CUSHIONS

BLACK
0 0 0 0 0 0
METAL & LIGHT FIXTURES

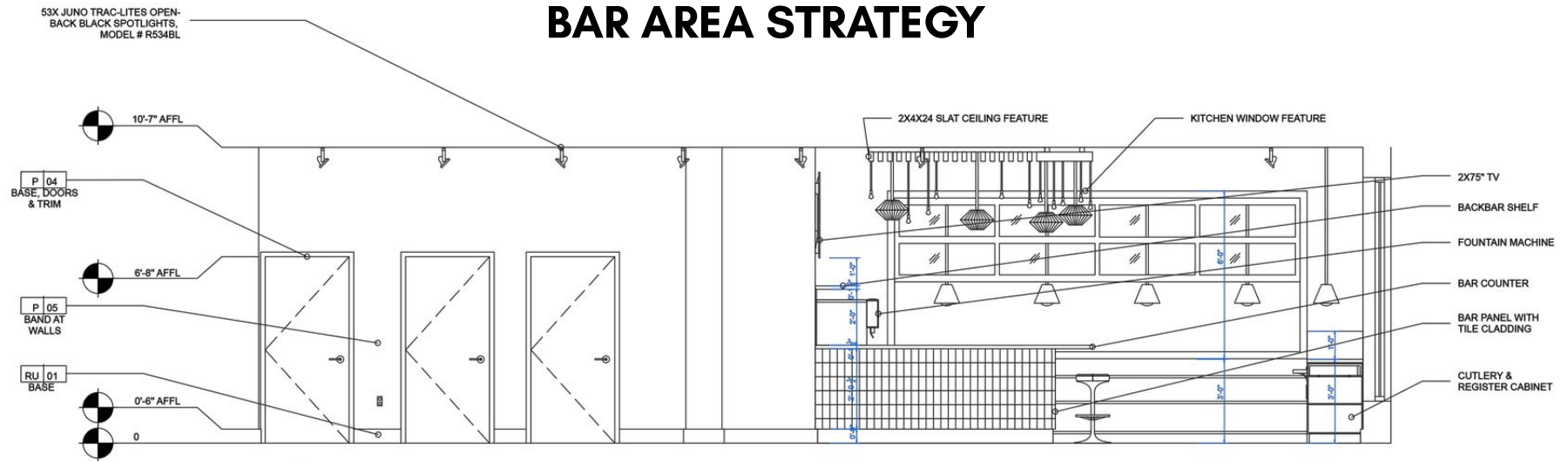
Seat Cushion Reference

Polished Concrete Floor

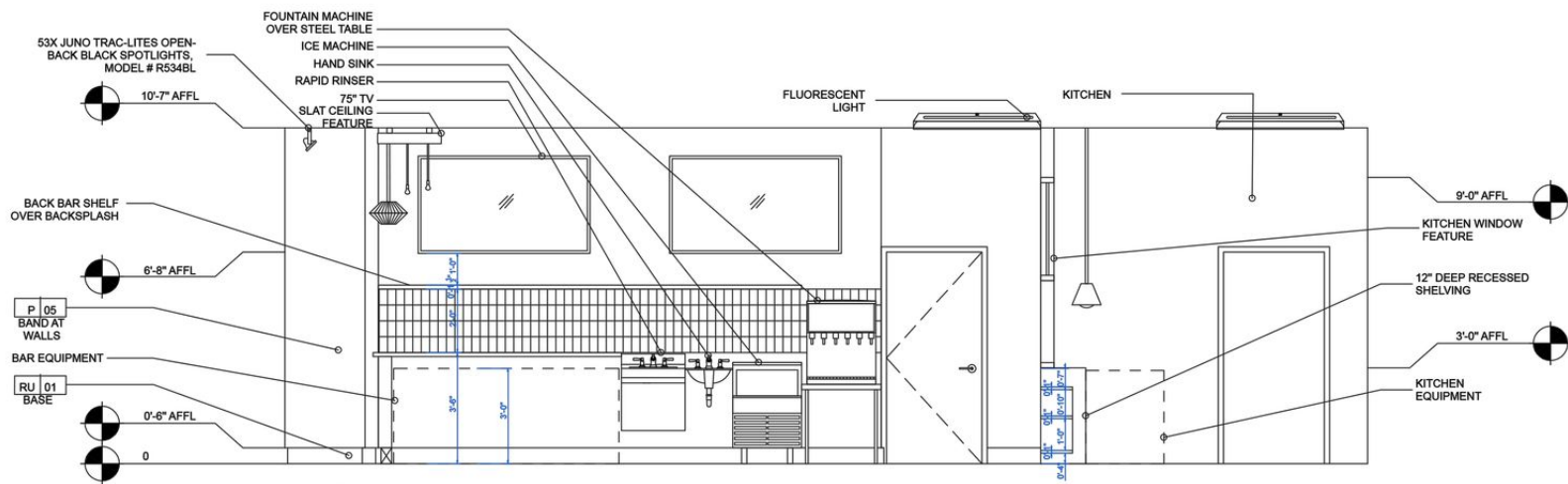
PROJECT NAME: Crave Kitchen & Bistro | **ADDRESS:** Sandy Springs, GA | **SQUARE FOOTAGE:** 4,000 sqft
PROJECT TYPE: Commercial- Tenant-Improvement - Pre-Construction (2025)



BAR AREA STRATEGY



BATHROOM CORRIDOR AND BAR ELEVATION



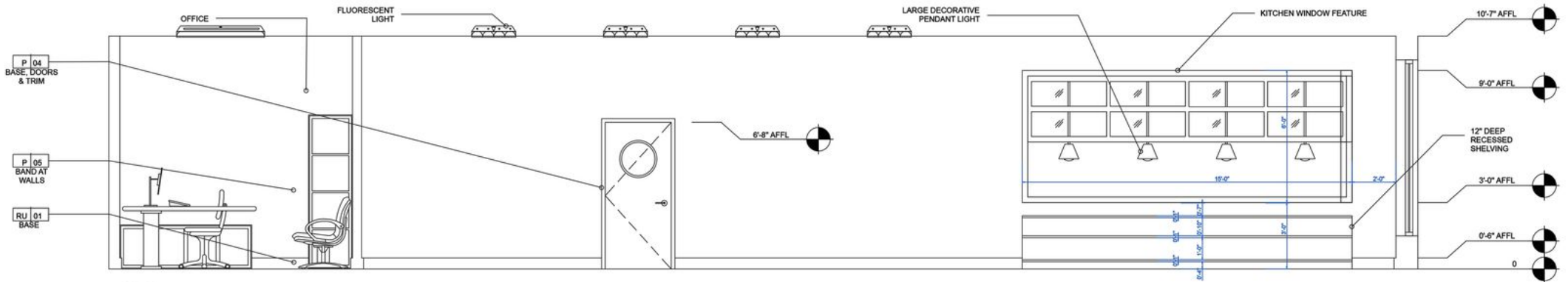
BACK-BAR AND KITCHEN ELEVATION

The bar area, a focal node within the plan, features a textured backbar wall, shelving, and television screens framed within a refined wooden surround. The design of the non-alcoholic bar—paired with open visibility into the kitchen—embodies the ethos of hospitality and transparency.

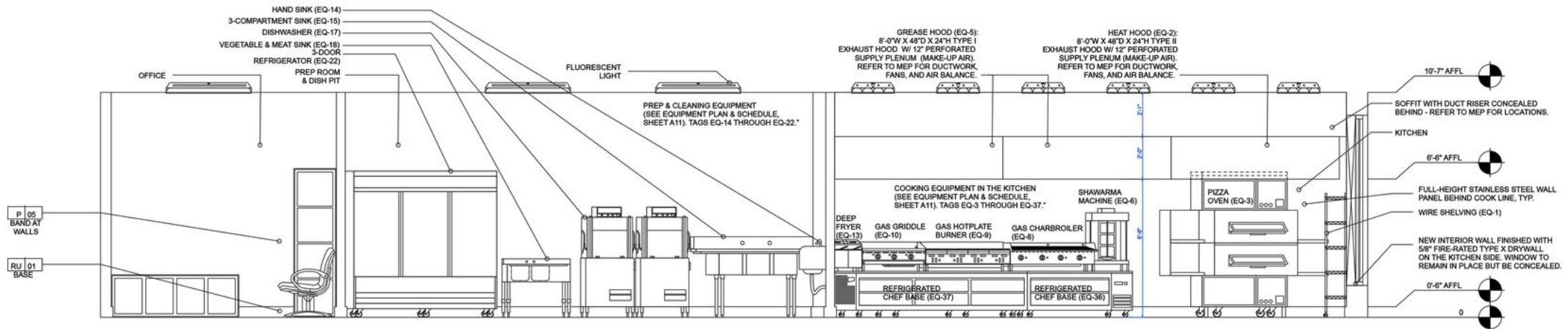


INTERNAL WINDOW FEATURE

A key spatial gesture is the operable internal window between the bar and kitchen, transforming cooking into a performative act within the guest's visual field. Below it, recessed shelving offers both storage and display, while beyond, the working kitchen houses a full suite of equipment—pizza oven, salad bar, griddle, fryer, and cold storage—organized for efficient service flow. Support spaces, including a walk-in cooler, prep area, dish pit, and office, occupy the rear of the plan, ensuring seamless operation.



KITCHEN WINDOW AND KITCHEN CORRIDOR ELEVATION



KITCHEN COOK-LINE AND PREP ROOM/DISH PIT ELEVATION

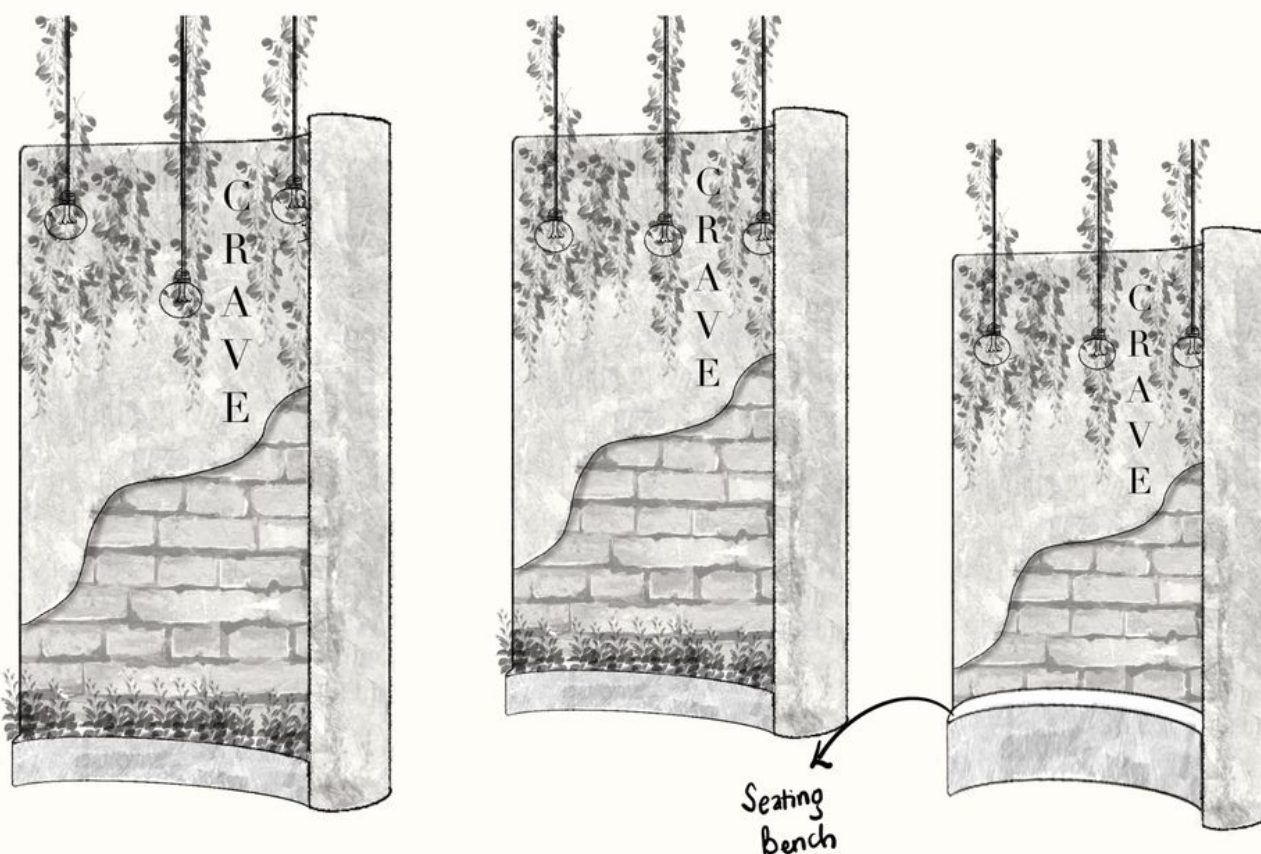


ENTRANCE STRATEGY


At the entry, the experience is carefully choreographed. Flanking stud walls define a narrow vestibule, each paired with planted greenery to create an immediate sensory transition from exterior to interior. A curved feature wall opposite the entrance acts as both visual anchor and social backdrop—an “Instagram moment” designed with intention rather than novelty. The welcome podium to the right and the built-in waiting bench to the left balance functionality with comfort.



FEATURE WALL
SKETCHES



CONCLUSION



Every built-in element was custom-designed, from the red-fabric seating to the smooth wooden surfaces, creating continuity across the space. The result is a restaurant that transcends its small urban footprint through precision and material tactility. Crave Kitchen & Bistro is a case study in how design, when thoughtful and restrained, can elevate a modest structure into an experience of warmth, culture, and craft.