



# D I V I C

Digital & Interactive Venue



# Table Of Contents

<b>The Team</b>	<b>4</b>
<b>Event Location</b>	<b>8</b>
<b>Rooms</b>	<b>10</b>
<b>360° Designing</b>	<b>22</b>
<b>References</b>	<b>32</b>
<b>Our Other Locations</b>	<b>34</b>



# The Team

## 1+1=3

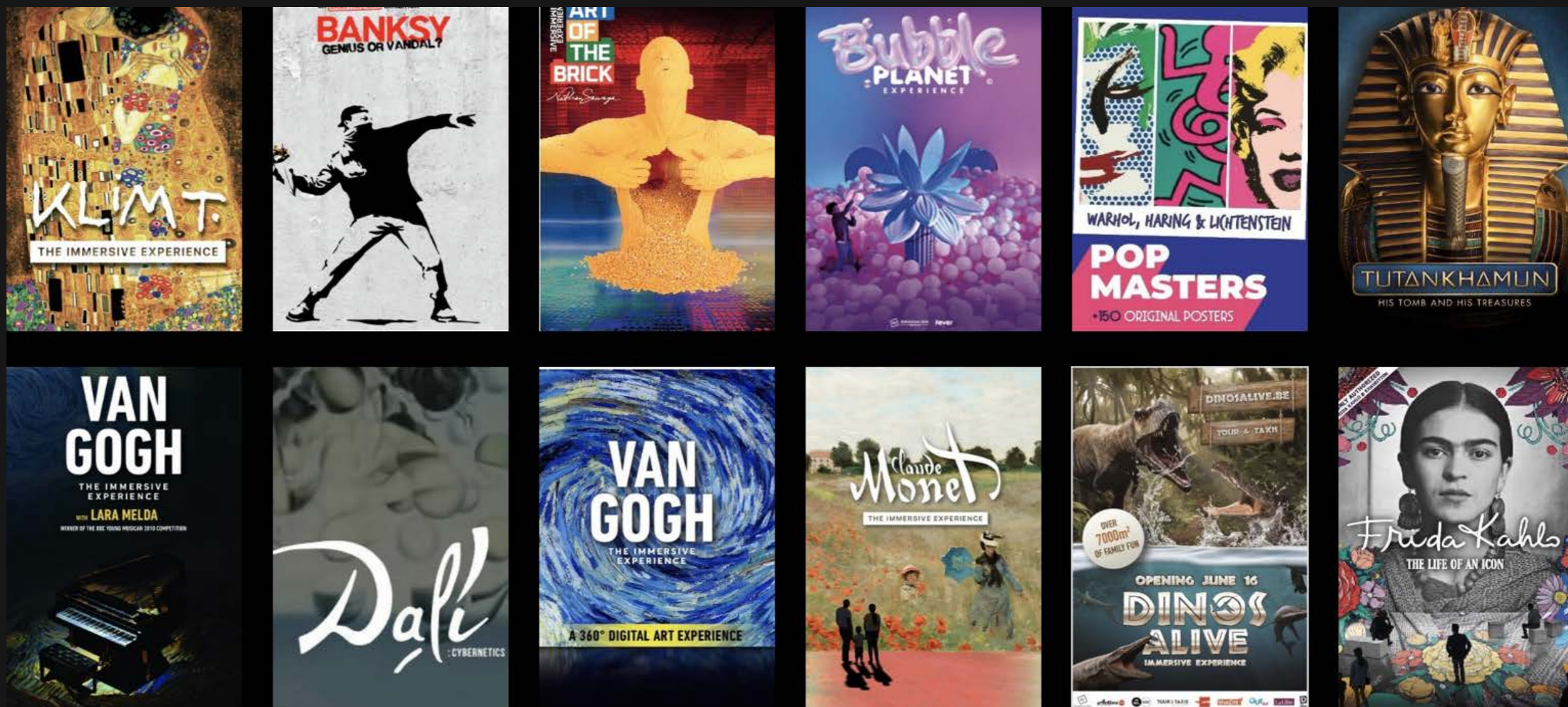
To realise this ambitious project, two strong parties join forces. This duo is evenly matched, one in terms of years of experience and financial capacity, and the other in terms of conceptualization, operation, and hospitality experience. This complementary collaboration brings together their networks and expertise to turn this venture into an (inter)national success.

## Exhibition Hub

With more than 20 million visitors and 120 different exhibitions adapted to unique spaces ranging from museums, historical sites, galleries, churches, and other unique locations, exhibition hub is one of the world's largest distributions of major exhibitions & edutainment

## Congé

The company Congé, has already established a strong track record with various projects in both Brussels and Antwerp. Specializing in 'revitalizing' blind spots in the city, Congé creates destinations rather than just spaces for passersby. It allows people to enjoy themselves in an inspiring setting. Congé is always for you on the lookout for that special moment in that special place!





### Dive

DIVE, situated in the pulsating heart of downtown Antwerp, emerges as an unparalleled digital and interactive venue, redefining the boundaries of immersive experiences. By day, it unfolds as a captivating exhibition, inviting guests to embark on a sensorial odyssey through a realm where imagination reigns supreme. As twilight descends, DIVE seamlessly transforms into a dynamic space, catering to an array of B2B and private events.

Within the depths of DIVE, space and sound converge harmoniously, crafting an unparalleled symphony for the senses. Its walls, adorned with cutting-edge technology, unfurl to reveal a boundless expanse of dimensions, curated by visionary artists and creators. Here, amid the digital tapestries, guests are transported to a world where reality blurs with fantasy, and the ordinary transcends into the extraordinary.

More than a venue, DIVE is a sanctuary for creative expression and human connection. In this sanctuary, the seeds of tomorrow are nurtured, and the boundaries of possibility are pushed beyond the limits of imagination.



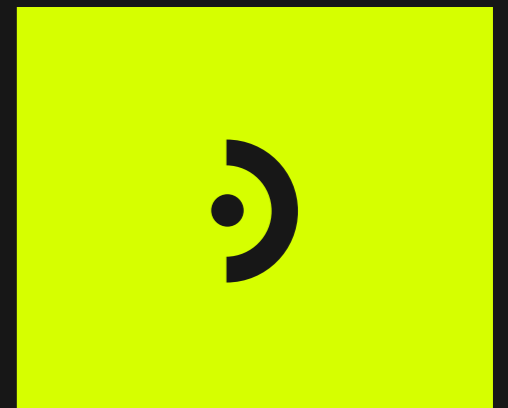
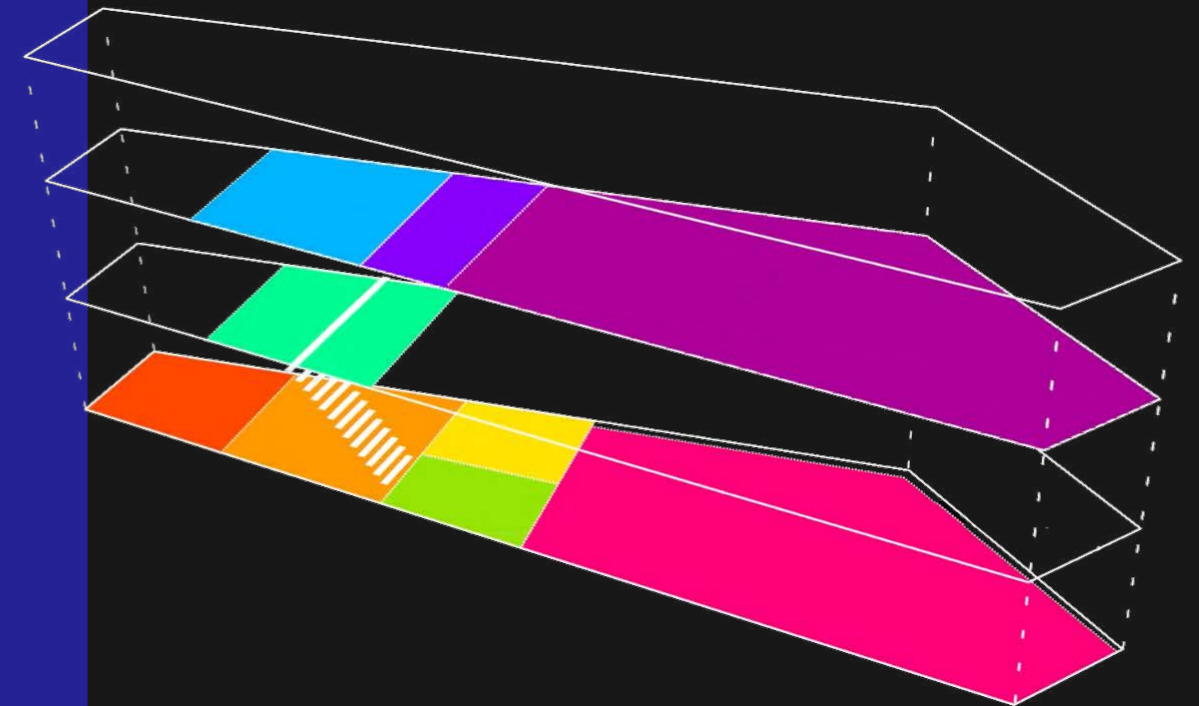
# Event Location

Are you seeking a one-of-a-kind experience for your staff party, a corporate gathering, B2B function, seminar, gala, product launch, wedding, immersive dinner, team-building event, product activation or a fashion show..?

DIVE, Europe's pioneering digital and interactive 4000m<sup>2</sup> venue, stands ready to exceed your expectations. With a capacity of up to 1500 guests, DIVE offers a transformative space where imagination knows no bounds. Whether you're hosting an intimate affair or a grand-scale event, our team is dedicated to managing every detail from start to finish.

## Facilities

- Fully equipped catering services
- Professional staff
- Experienced event planners
- Welcoming hostesses
- Reliable security personnel
- Dynamic DJs and live entertainment
- Expert technicians
- Cutting-edge video equipment
- State-of-the-art sound systems
- Immersive projectors and screens
- 360° projections on walls, floor, and ceiling - a first of its kind in Europe
- DJ equipment
- Convenient cloakroom facilities/lockers
- Versatile furniture arrangements
- Custom activations





# Rooms

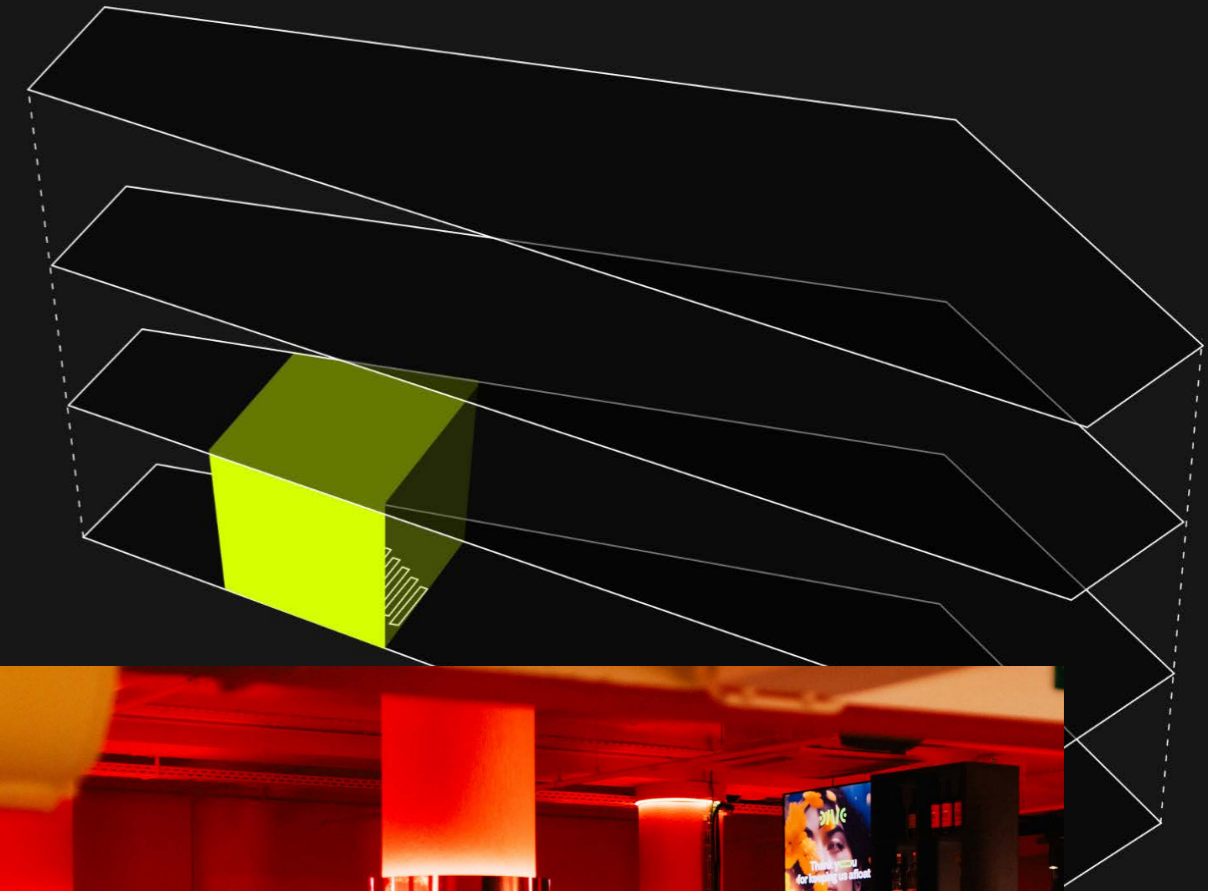
## 1

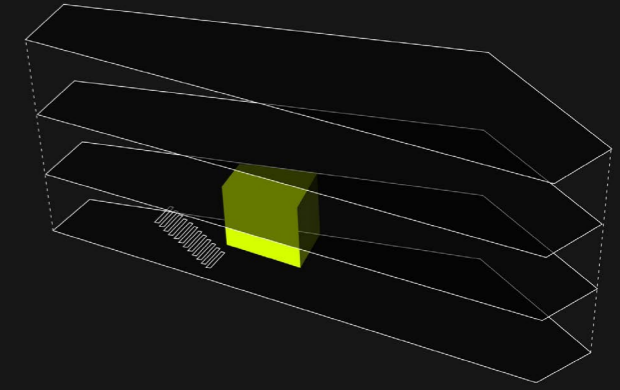
### The Box Office, Atrium & Bar

Entering this mysterious building through an enigmatic corridor you feel welcomed at our warm reception desk. The Bar breaths a cosy warm terracotta vibe. The opposite what you would expect from a digital venue! The Central atrium welcomes you with daylight, a light installation and a glimpse of the grandeur of the building.

#### Specifications

- 350 square meter
- 30 meter high atrium
- 4 times 3m x 0,5m led screens to customise with your content by our creative team
- stage
- furniture
- bar
- toilets
- 300 lockers
- 120 meter pixelled art installation in the atrium
- capacity of 400 people





## 2

### The VR Room

A Digital Venue without a VR-zone, thats virtually unthinkable!

#### Specifications

- 30 VR helmets
- Fully customisable
- 100 square meter



## 3

### The Shop

Want to take the experience home? A themed giftshop is at your disposition.

#### Specifications

- POS
- Staff
- 120 square meter





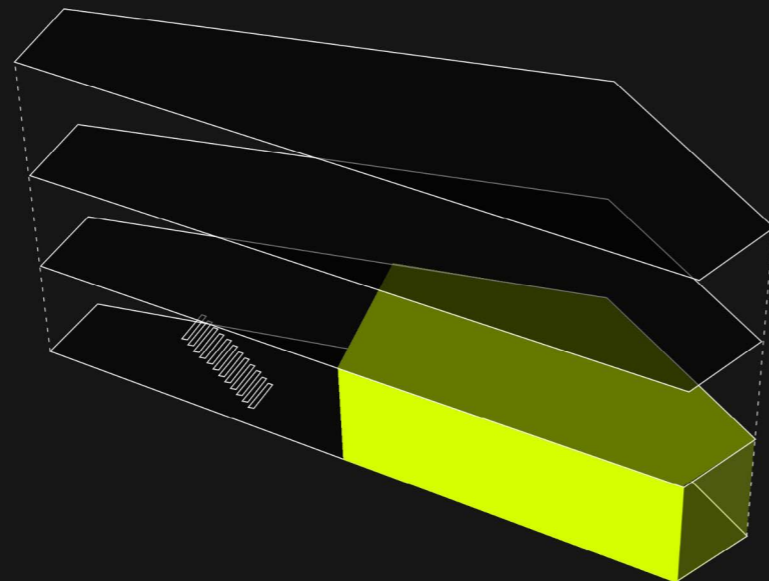
# 4

## Expo zone 2

The building is concipiated to household 2 expo's, this zone foresees large spaces divided over 2 floors  
Accesible as a full stand alone expo

### Specifications

- 1500 square meter
- high and low ceilings with double high zones
- toilets
- acces through central atrium





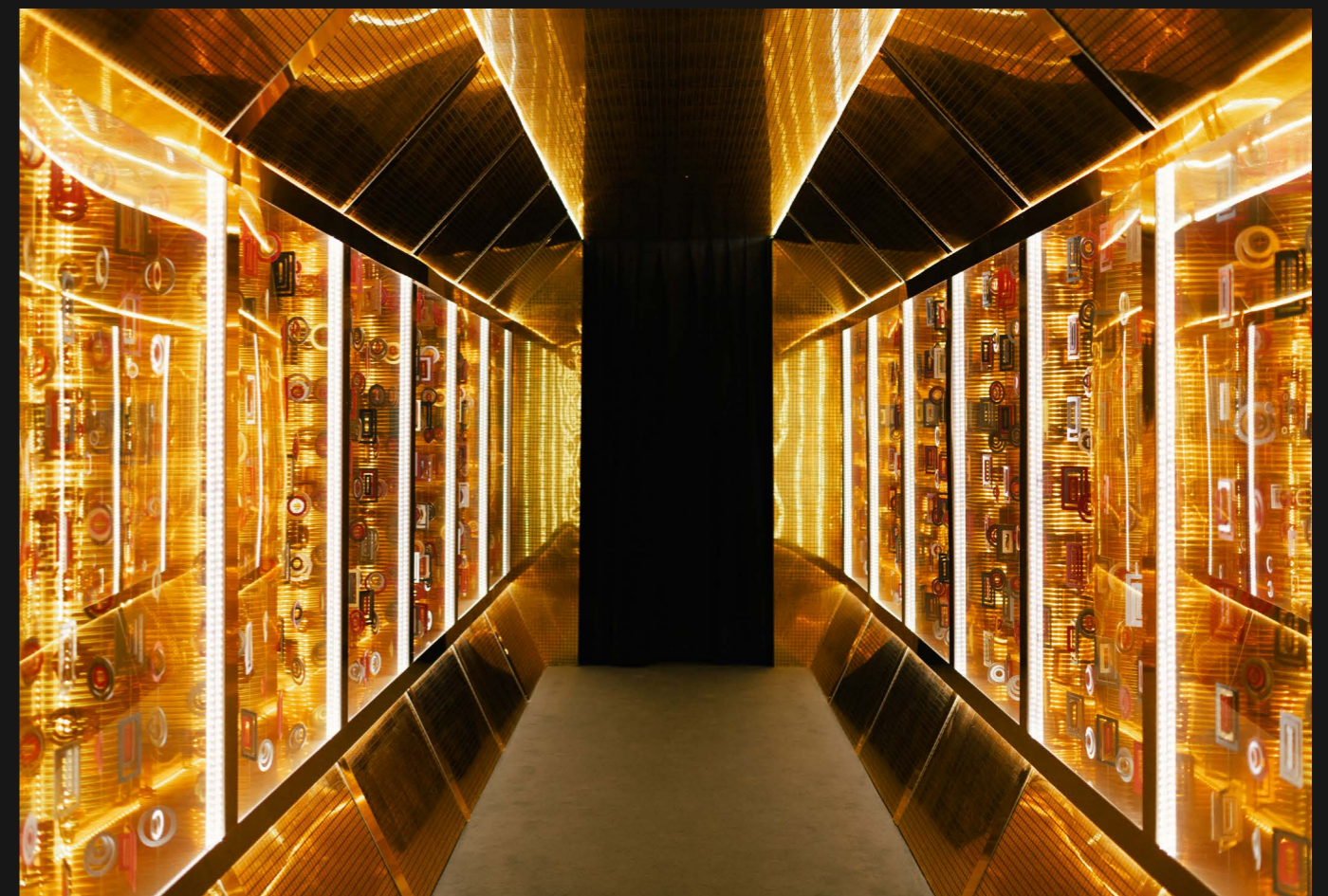
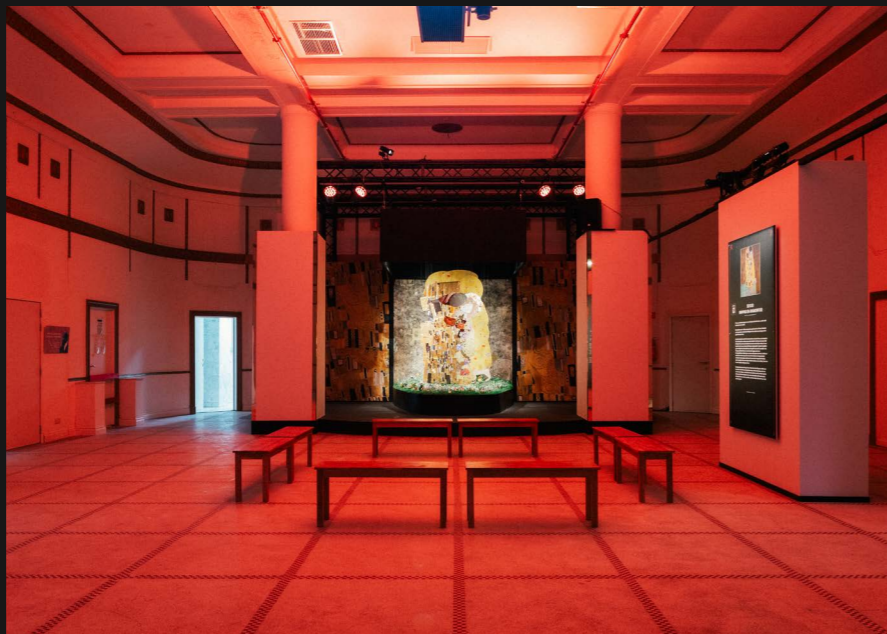
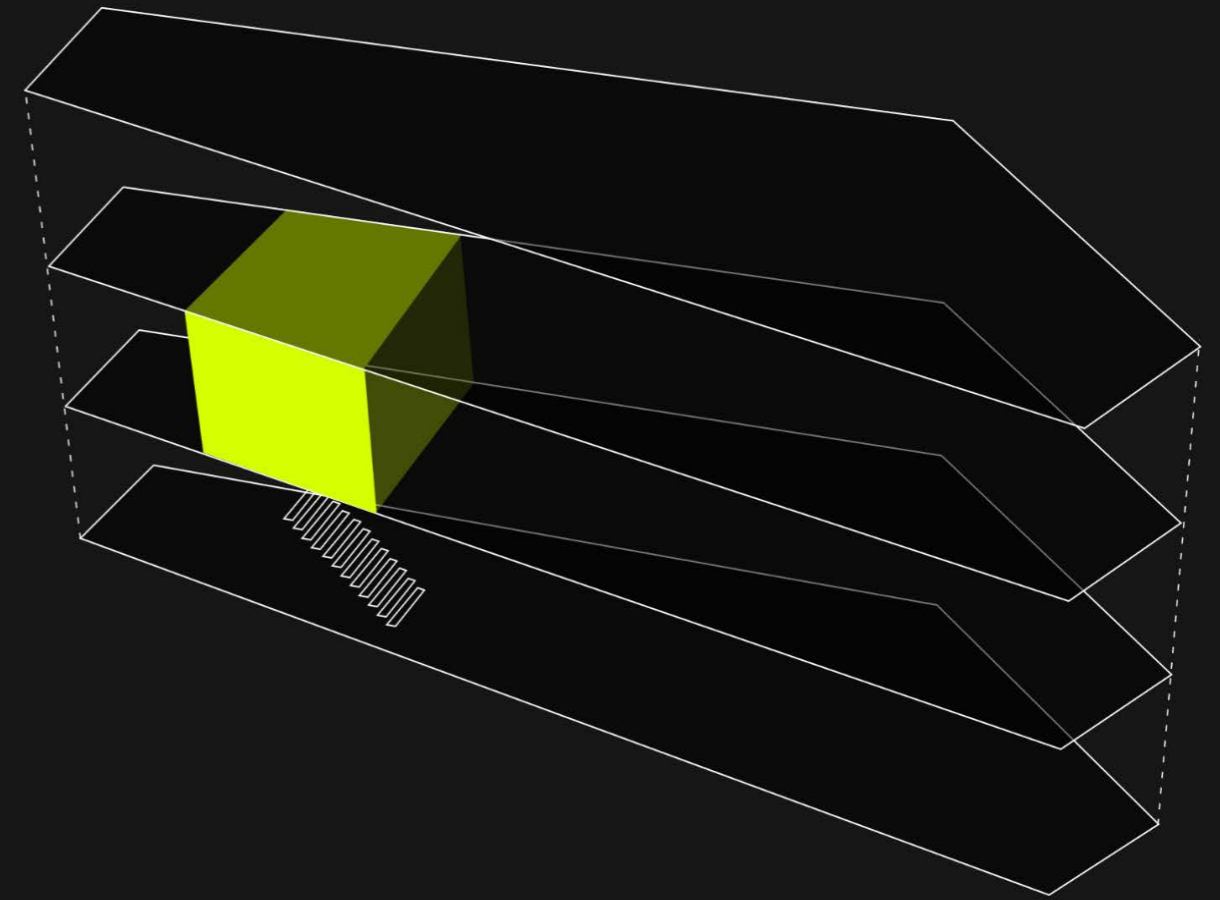


# 5

## The Foyer

At the first floor you can find the last full authentic room of the building. Molures dating back to 1920 gave the old cinema the cachet in his haydays. In direct connection with the main room it served as the foyer.

- 200 square meter
- high ceilings
- stage
- en suite toilets
- authentic ornaments





# 6

## 360° Immersive Room

On the upper level of DIVE, you will find the 360° immersive room - rectangular box with projectors - spanning 600m2. Currently showcasing " KLIMT, THE IMMERSIVE EXPERIENCE". This versatile space can be fully customized to your needs.

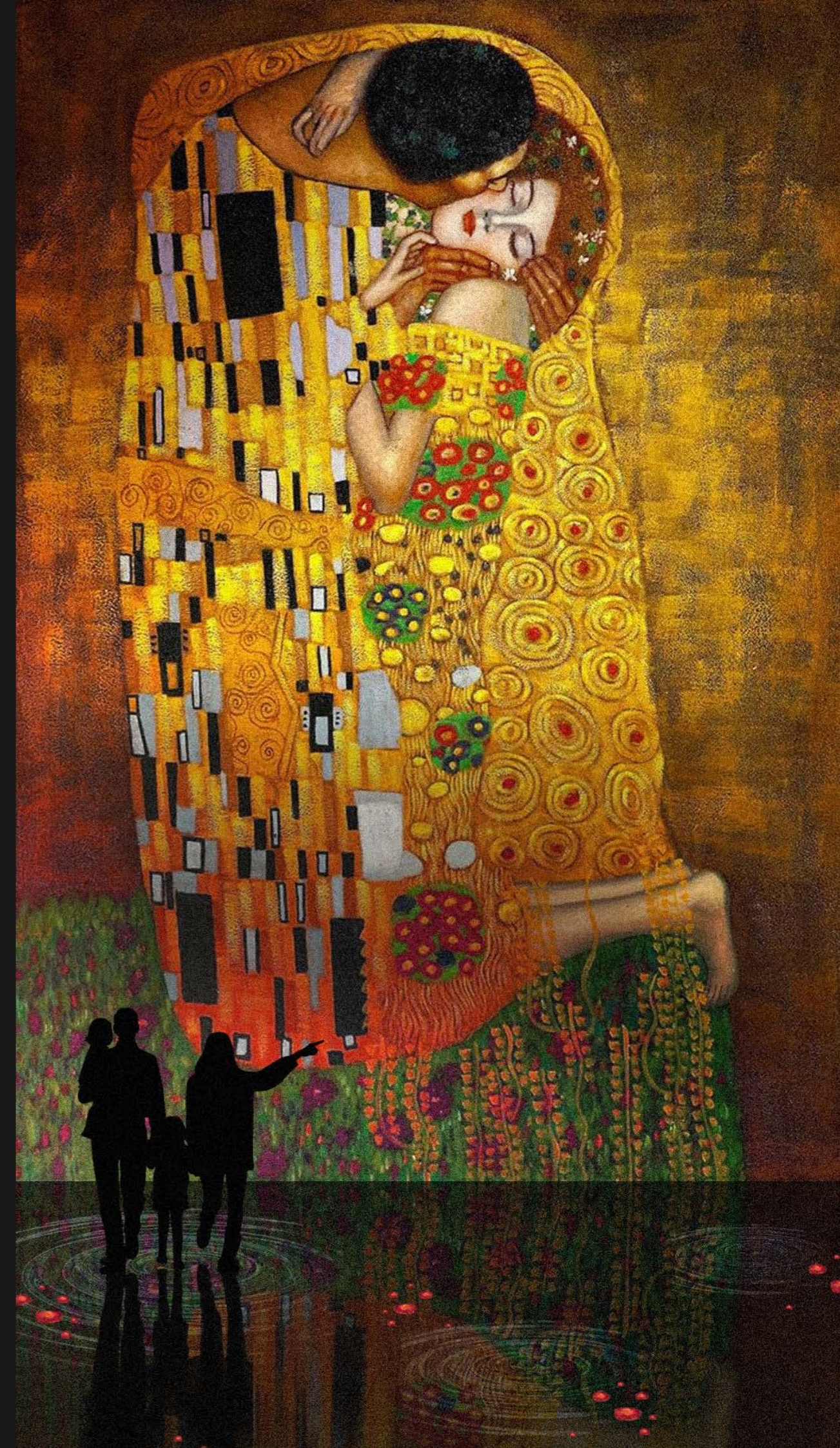
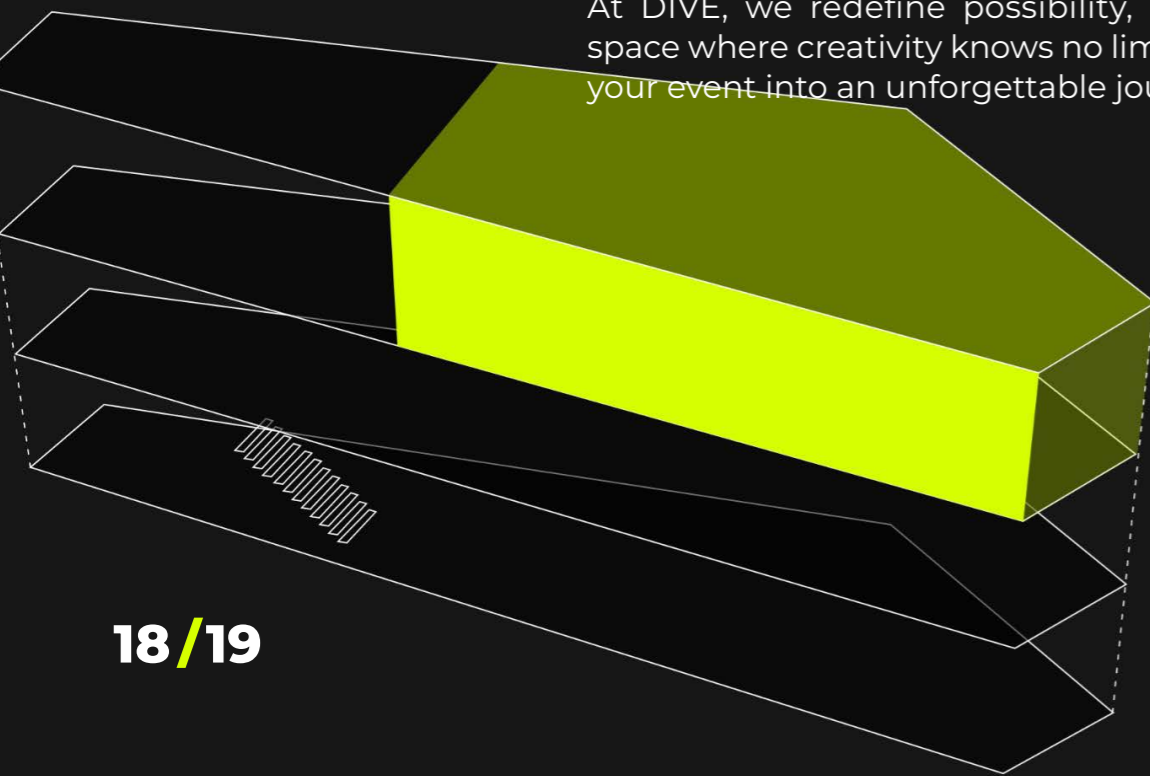
### Capacity

- Seated dinner: 300 pax
- Presentation: 300 pax
- Cocktail-style event: 500 pax
- Walking dinner/Reception: 500 pax

### Specifications

- State-of-the-art sound and video equipment
- High-speed WIFI
- 40 Barco projectors for full 360° projections
- Customizable content crafted by our creative team

At DIVE, we redefine possibility, offering a dynamic space where creativity knows no limits. Let us transform your event into an unforgettable journey



Let our creative team tell  
custom stories for you

More than 5 years experience in 360°  
immersive storytelling.





# 360° Designing



## Services

### Design

- Motion Graphic
- 3D & 2D animation
- Product visualisation
- Graphic design
- Character design
- UI design and more...

### Interactive

- Interactive installations
- In-store experiences
- Mini games
- VR, AR & XR
- Online 3D applications
- 360 videos and more...

### Productions

- Video editing
- VFX & SFX
- Real time rendering
- 3D printing
- Event production
- Maintenance and more...



## Production Workflow

### Communication

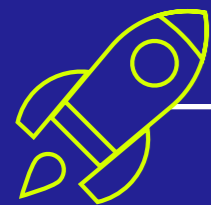
Creative Briefing + Kick-off: meeting/video call  
First tests: meeting/video call  
During production: (meeting/(video) call if needed)  
Delivery: On site deployment  
Debriefing: meeting/video call

### Process

We mainly work with Google drive and a Project Card. On this project card there is an overview of all contacts, timings, scenes, feedback and files. This way we can reduce cutter and files/feedback getting lost in mail triads.

### Spoc

We prefer to work with a spoc collecting all feedback from your side and communicating with Congé on behalf of design of the 360° room. On our side we have a fixed team with dedicated Project Manager and a back up team if needed.



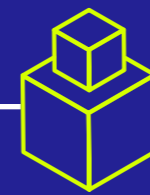
**Kick-Off**  
Team  
Briefing  
Methodology



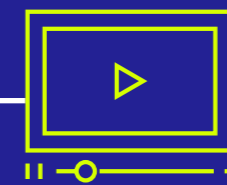
**Research & Concept**  
Investigation  
Mood  
Tests



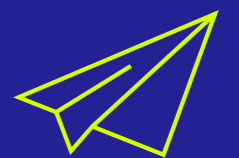
**Development**  
Technical setup  
System research  
Controls



**Design**  
Black/white box  
Open water landscape  
Logo integration

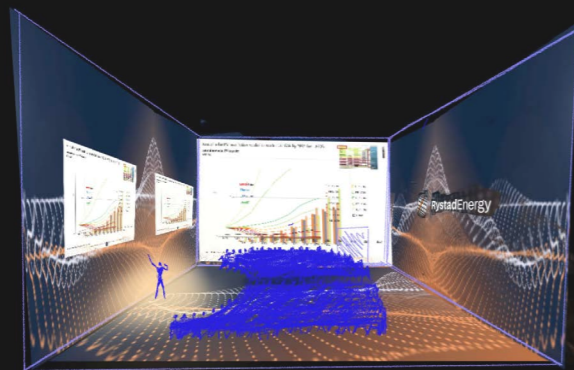
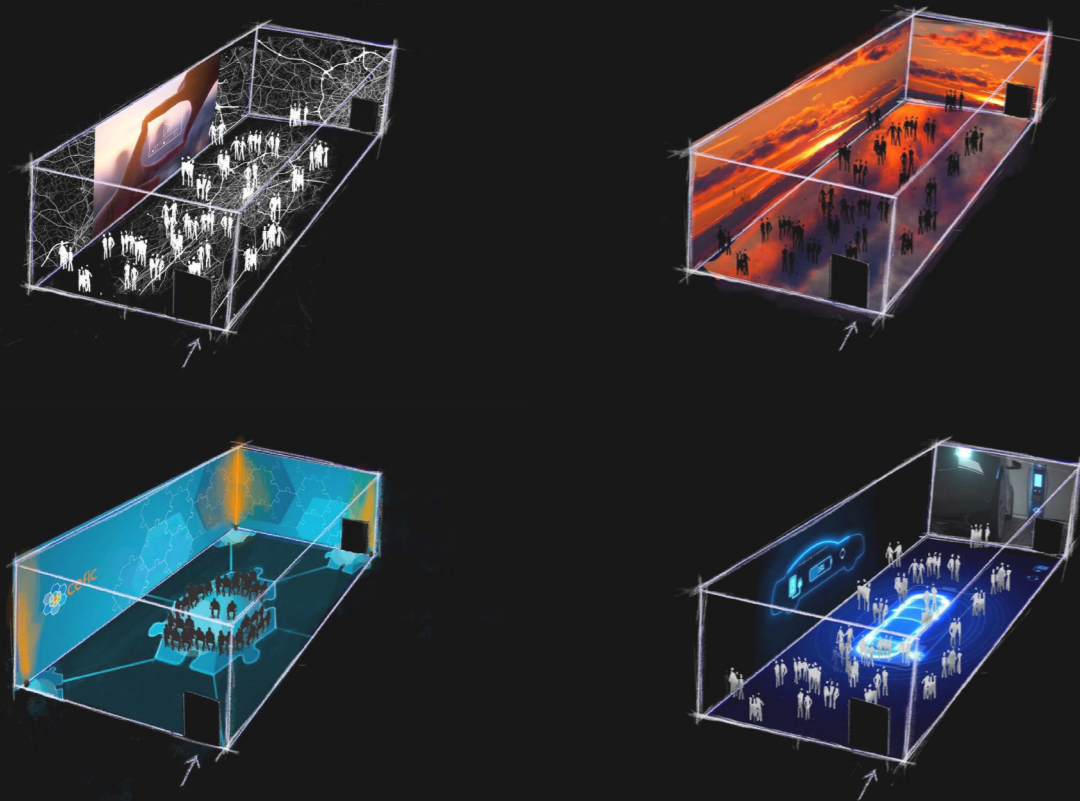


**Animation**  
Black/white box  
Open water landscape  
Post production



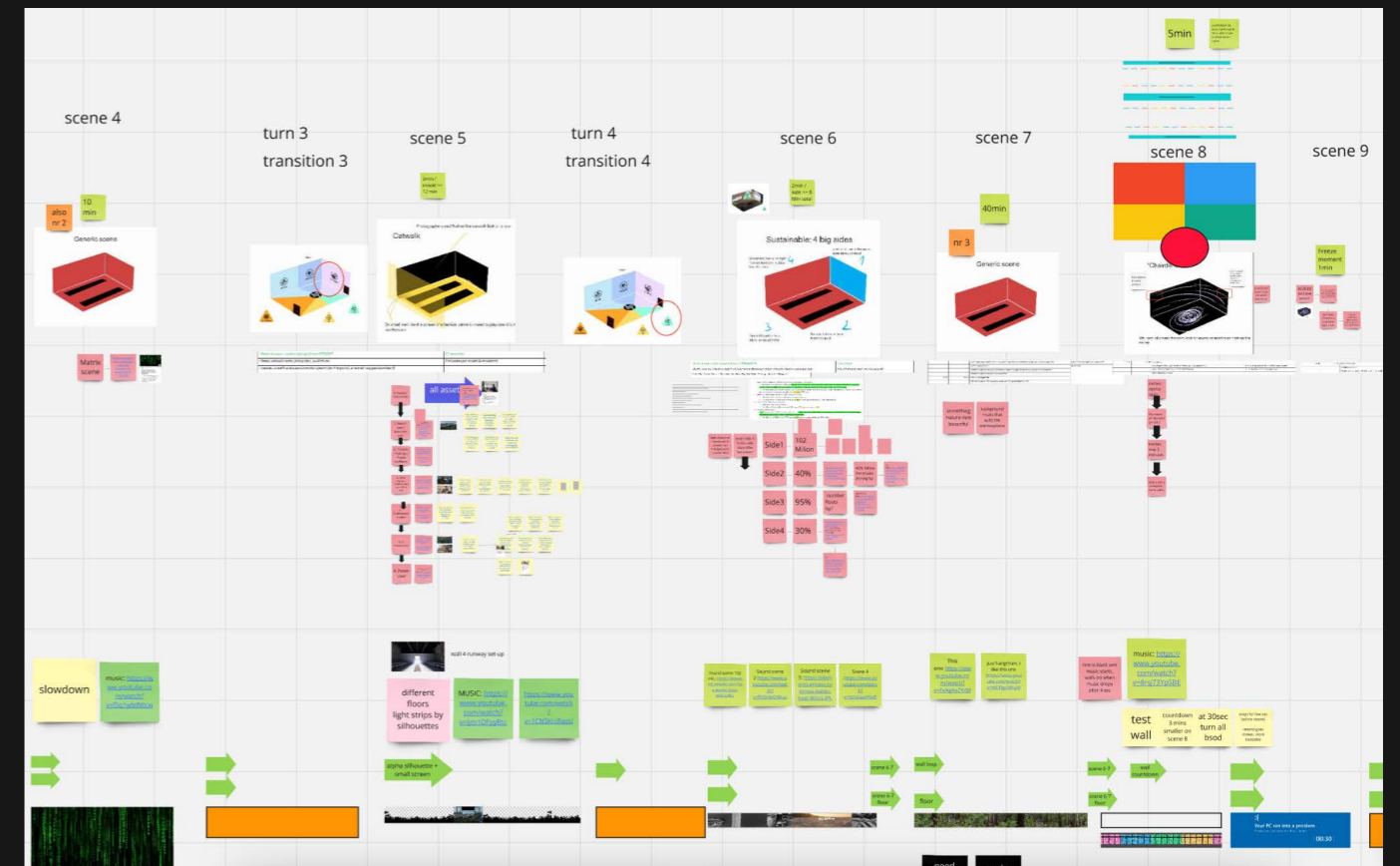
**Delivery**  
Testing  
Performance innovation  
On site development

Sketches are used to visualise first proposals in the research phase



### One experience: creating the scenes

One experience is never just a presentation. We structure our experiences in multiple scenes, clearly described in a script and visualised in a storyboard. One experience can variate form 3 up to 35 scenes, depending on the complexity of the event.





Story arc of one part of the Do you remember immersive show.

### One Hour shows: a movie production

For our shows we first workout the general theme and a story arc. This is followed by a script and detailed storyboard with the concrete ideas. After confirmation we continue to develop and test out base moments, animations and particularly challenging scenes in the room. We adjust and After confirmation on the desired effects in the room we start the complete animation of all the scenes. This is followed by the last step of the design team, rendering. After that the scenes are mapped in the projection system and settings per scene are set and calculated. Depending on the show we automate the whole show or write a script for direction/call sheet for the day of the event.

Do You Remember - SCENE CHECK						
Do You Remember SCRIPT						
Seq	Timing	DESCRIPTION	VISUAL	MUSIC & SOUND	Final Colorgrade	FINAL RENDER
1	0:14:00	Onboarding Intro Immersive theater	Wall: ✓ Floor: ✓ Table: /	✓	✓	✓
		Intro DYR	Wall: ✓ Floor: / (black) Table: /	Music ✓ Voiceover: add	✓	✓
		Gigi's entrance	Wall: ✓ Floor: Galaxy Table: /	Music ✓ Sound effects	✓	✓
2	0:14:00	15 SEC TRANSITION > 70s	"Wall: ✓ Floor: ✓ Table: /	✓	✓	✓
		70s Intro decade	Wall: ✓ 99% Floor: / Table: /	Music ✓ Sound effects ✓ 90%	✓	✓
3	0:14:52	70s cocktail dancers present	Wall: ✓ 80% (ingredients check > Gin befeater, San de Pascual, ) Floor: ✓ Table: ✓	Music ✓ Sound effects ✓	✓	✓

One hour shows can go up to 270 files for 75 scenes





# Packages

## Deep Dive Delight

Includes: 1h of custommade content.

Hours:

- Project manager
- Motion designer
- Sound designer
- Script writer
- Amount of scenes
- Render time of files
- Projection mapping

## The Full Dive Experience

Custom made presentation

- Hours project manager
- Motion designer
- Sound designer
- Script writer
- Amount of scenes
- Render time of files
- Projection mapping

## Wonder Waves

Immersive environment + presentation on top.

- Hours project manager
- Motion designer
- Sound designer
- Amount of scenes (max 6)
- Render time of files
- Projection mapping

## A splash of immersion

1 immersive scene from archives uncustomized

- Hours project manager
- Motion designer
- Sound designer
- Amount of scenes (max 1)
- Render time of files
- Projection mapping







# References

Previous guests:



Deloitte.



Belfius



ENGIE



Lannoo



L O L A L I Z A





# Our Other Locations

## Meet Antwerp

Looking for a breath-taking venue in Antwerp? Plein Publiek ANT is the one and only sustainable circular destination.

Since 2015 this famous sibling has been travelling through different locations in Antwerp (Fierensblokken and Nieuw Zuid). Now Plein Publiek Antwerp resides a permanent location at Blue Gate Antwerp. The first eco efficient business park in Belgium.

## We Offer

- Breakout boxes
- Meetingrooms
- Whitebox
- Biggest projection screen of Europe:
- 120m full surround
- 6 Padelcourts
- Greenhouse

...

More info: [info@pleinpubliek.be](mailto:info@pleinpubliek.be) at your service!





### Meet Brussels

Plein Publiek BXL is located in the beautiful Dynasty Palace on the Mont des Arts in Brussels, right above Brussels central station. Since opening in March 2019, Plein Publiek has built a huge reputation in the Brussels event scene. Countless events have passed by, from corporate events to press conferences, live concerts to vintage markets, salsa dancing evenings to fashion shows and much more!

### We offer

- Greenhouse
- Meeting rooms
- 360° immersive theater
- Terrace
- Balcony

...

More info: [alyssa@pleinpubliek.be](mailto:alyssa@pleinpubliek.be)



**Contact Us For  
More Information**

**Digital Interactive Venue**

Carnotstraat 90  
2060 Antwerpen  
lily@nvconge.be

**[www.divenow.be](http://www.divenow.be)**

