



One Metalliqx





STEELTIME  
時鋼集團有限公司

Room 231, 2/F, Tung Lee Industrial Building, 9 Lai Yip Street, Kwun Tong, Hong Kong  
香港九龍觀塘區勵業街9號同利工業大廈2樓231室

☎ (852) 3898 6521

✉ [general@steeltimigroup.com](mailto:general@steeltimigroup.com)



# Creating Boundless Possibilities

**One MetalliQx** specialises in the production and application of liquid metal to create finishes that look and feel like solid metals. The use of exclusive metal coating is a viable alternative for a metal finish that is product-efficient, cost-effective, durable, seamless in design and aesthetically captivating. With over 200 standard coatings to choose from, this truly innovative product is the choice for designers and artists who seek to create metallic finishes on virtually any stable substrate.

As a pioneer of material/coating industry in both Hong Kong and Singapore, you are assured of One MetalliQx's expertise in customizing coatings to your specifications. Constantly lauded for excellent workmanship and timely delivery of every project, we strive to provide the best service and product to our customers. All works undertaken by us are also backed by a warranty against cracking, delamination and peeling.

While we all are given the gift of imagination--this brochure is our gift to your imagination. It provides you with an insight into the versatility of liquid metal as seen in its application on a vast range of substrates including but not limited to timber, MDF, acrylic, concrete, glass, ceramics, plaster and metal.

The works featured in this brochure include projects we have undertaken, from interior spaces to sculptures. They demonstrate the effective use of the product in the design and arts industry.

Most of all, we hope this brochure inspires you to explore the boundless possibilities that are within your reach, and achievable only with a company that understands your vision.

# One MetalliQx 為您創造無限可能

**One MetalliQx** 專注於專屬金屬塗層的生產和應用, 創造外觀和感覺像固體金屬的飾面。專屬金屬塗層是固體金屬的另類替代品, 符合產品成本效益, 而且擁有耐用、無縫接合和美觀的優點。我們擁有超過 200 種標準飾面以供選擇, 這款創新產品非常適合需要在底材上製造金屬效果的设计師、藝術家、發展商及供應商。

作為新加坡和香港的行業先驅, **One MetalliQx** 以卓越的手藝和準時完工見稱, 我們確保在訂制塗層方面的專業知識達到您的要求, 並保證所有產品都是高品質。為進一步保障客戶利益, 我們特設保養期, 補修飾面可能出現的裂縫、分層和剝落等問題。

這本小冊子是我們送給您的禮物, 希望能激發您的無限想像力, 使您能更深入瞭解專屬金屬塗層的多功能性, 像其如何應用於各種底材, 包括但不限於木材、MDF、丙烯酸、混凝土、玻璃、陶瓷、石膏和金屬等。小冊子將介紹 **One MetalliQx** 如何有效運用專屬金屬塗層於設計和藝術產業當中, 從裝飾室內空間到製作雕塑, 我們將不可能變為可能, 帶您見識專屬金屬塗層的無限可能性。**One MetalliQx** 本著「客戶為先」的宗旨, 多年來與多個國際著名的企業、酒店、銀行等合作, 製作出符合客戶要求的高品質金屬飾面藝術品, **One MetalliQx** 相信憑著我們多年經驗, 必定能滿足您的需要。



The use of exclusive metal coating is a viable alternative for a metal finish that is product-efficient, cost-effective, durable, seamless in design and aesthetically captivating.

專屬金屬塗層是固體金屬的另類替代品,符合產品成本效益,而且擁有耐用、無縫接合和美觀的優點。

## One Metalliqx (exclusive metal coating)

<p><b>Finishes</b> 飾面選擇</p>	<ul style="list-style-type: none"> <li>- Provide over 200+ standard metal finishes 200多種標準金屬飾面可供選擇</li> <li>- Custom-made metal finishes 可自訂金屬飾面</li> <li>- Mixture of different types of metal to produce unique and distinctive metal colors 混合特殊的鋁/黃銅/青銅金屬混合物製成獨特金屬顏色</li> </ul>
<p><b>Product Diversity</b> 產品多樣性</p>	<ul style="list-style-type: none"> <li>- Multiple finishes can be applied on the same type of product to increase choices of product style 可靈活配搭多款金屬飾面於同一產品, 輕易增加產品款式</li> <li>- <b>One Metalliqx</b> exclusive metal coating can resist UV and acid rain, therefore, it is perfectly suited to the outdoor products <b>One Metalliqx</b> 專屬金屬塗層可抵禦紫外光和酸雨, 適用於長期放於室外的產品, 使用範圍極廣</li> </ul>
<p><b>Production time</b> 生產時間</p>	<ul style="list-style-type: none"> <li>- Normally 3-4 weeks (May vary depending on product size, complexity, etc) 一般只需3-4星期(但亦需依成品的大小、複雜性等因素而定), 可造到無縫拼接效果</li> </ul>
<p><b>Weight</b> 重量</p>	<ul style="list-style-type: none"> <li>- Depends on substrates, generally the metal coating is around 0.5mm-2mm thick 依底材重量而定, 塗層厚度只有0.5mm-2mm, 不會大量增加底材重量</li> </ul>
<p><b>Maintenance</b> 保養</p>	<ul style="list-style-type: none"> <li>- Save time by using water or soap water for daily maintenance 簡單省時, 只需要用清水/肥皂水清潔</li> <li>- 2 years warranty against cracking, delamination and peeling 設有2年保養期, 補修裂縫, 分層和剝落等問題</li> <li>- Man-made damage repairable however subject to charges 人為損壞可修復, 但需要收費</li> </ul>

# 7 Key Features of One MetalliQx

## One MetalliQx的7大特點

### Effortless Creation of High-end Products

#### 輕易打造高檔次產品

- Metal offers a sense of class and elegance. Metal signages, doors, design walls as well as sculptures are therefore frequently used in MNCs, chain stores, deluxe hotels, luxurious residences and Class A offices to create a chic and modern atmosphere.

金屬給人一種高級、型格、有品味的感覺，不少跨國公司、連鎖店、高級酒店、住宅、辦公室都會使用金屬作為招牌、大門飾面、裝飾牆身，甚至製作藝術品，使用One MetalliQx 專屬金屬塗層就能輕易做到有質感的金屬效果，以提升整體空間格調。

### Wide Range of Product Diversity

#### 產品多樣性極高

- One MetalliQx offers over 200+ standard metal finishes, including rust, patina and textures. Custom-made metal work is welcomed.

One MetalliQx 專屬金屬塗層有200多種標準金屬飾面可供選擇，包括波浪、鏽蝕和古銅色等效果，亦可自訂金屬顏色。

- Mixture of different types of aluminum / brass / bronze / copper to produce unique metal tone / color.

混合殊的鋁/黃銅/青銅金屬混合物製成獨特材質

- Multiple finishes can be applied on the same type of product to increase choices of product style

可靈活搭配多款One MetalliQx 專屬金屬塗層於同一產品，輕易增加產品多樣性。

### Short Production Time

#### 訂製時間短

- Producing a solid metal product requires a complex and time-consuming process, including modeling, solidifying, sanding and so on. A single mistake could cost enormous effort to rectify.

訂製金屬產品要經過繁複的工序，如打模、凝固、打磨等，非常耗時，當中若出現錯誤，又要花上一大筆時間修補。

- One MetalliQx exclusive metal coating can be easily applied on product surface to create seamless metallic finish. The spraying process normally takes 3-4 weeks, which greatly shorten the production period.

One MetalliQx 專屬金屬塗層可以直接塗在已成形的產品上，做到無縫接合。一般加工過程只需3-4個星期，大大節省生產時間。

### Easy Transportation

#### 方便運送及移動

- The transportation of heavy solid metal is inevitably costly while One MetalliQx helps you save a lot: our exclusive metal coating can be as thin as 0.5mm, which does not add much weight to your product. Thus, transportation of products with metal finishes will then be easier, and more importantly, cheaper.

一般金屬非常沉重，難免會增加運輸成本及人手搬運成本，但由於One MetalliQx 專屬金屬塗層只有0.5mm厚度，不會大量增加底材重量，方便運送。

### Low-Maintenance

#### 容易保養

- Save time by only using the water and soap water when cleaning the products with One MetalliQx exclusive metal coating.

塗上One MetalliQx 專屬金屬塗層的產品保養方法非常簡單省時，只需要用毛巾沾上清水/肥皂水清潔即可。

### Sturdy and Durable

#### 堅固耐用

- One MetalliQx can be used outside, UV and acid rain while typical solid metal surfaces are prone to rusting and corrosion. Therefore, our exclusive metal coating finishes are perfectly suited to the outdoor products.

One MetalliQx 專屬金屬塗層有防水功能，產品表面的金屬塗層不會因潮濕而變色、生鏽；亦可抵禦紫外光和酸雨，適用於長期放於室外的產品。

### Capable for Manifold Substrates

#### 適用於多種物料

- One MetalliQx exclusive metal coating apply on a vast range of substrates including but not limited to timber, MDF, acrylic, concrete, glass, ceramics, plaster and metal., which basically turn everything into the luxurious metal artworks.

One MetalliQx 專屬金屬塗層適合任何底材，包括木材/ MDF/玻璃纖維/金屬/混凝土/玻璃/陶瓷/石膏，基本上所有物件都可轉化成金屬表面，靈活性極大，可隨心將所有東西化身為高級藝術品。

# Doors 門

One Metalliqx exclusive metal coating, our metallic finishes offers greater flexibility in design and styling of your door.

One Metalliqx 提供的一系列金屬飾面,讓你在設計和造型方面享有更大的靈活性。



Doors are an integral part of any interior space, yet their potential as a design element has often been compromised by their functionality. Conventional doors in residential, public or commercial spaces can now be easily transformed into a metallic work of art, without the issue of weight that a solid metal door would otherwise pose.

Without a weight concern using **One Metalliqx** exclusive metal coating, our metallic finishes offers greater flexibility in design and styling of your door. We are able to create effects such as oxidization or rust, along with textured finish that feels as good as (exactly like) solid metal.

「門」是組成室內結構的一個重要元素，但人們經常忽略它作為設計作品的潛力，現在透過**One Metalliqx** 專屬金屬塗層，無論是住宅、公共或商業地方的門，都可輕易轉化為金屬藝術品，擺脫固體金屬門的重量問題。

**One Metalliqx** 提供的一系列金屬飾面，讓你在設計和造型方面享有更大的靈活性，我們能製造金屬氧化或生鏽等效果，以及質感與固體金屬一樣光滑及優質的飾面，無論於任何種類的門上使用金屬塗層，我們都能以高規格完成。

1. Substrate : Timber  
Finish : Bronze Light Pits With Patina
2. Substrate : MDF  
Finish : Aluminium Light & Aluminium Irregular Buff
3. Substrate : MDF  
Finish : Aluminium Light
4. Substrate : MDF  
Finish : Antique Bronze Patina
5. Substrate : Timber  
Finish : Bronze Jewel Patina

2.



3.



4.



5.



# Signage 標牌

One Metalliqx exclusive metal coating is much lighter, durable and hard-wearing.

One Metalliqx 專屬金屬塗層無需像固體金屬一樣進行鑄造, 不但重量輕、耐用且耐磨。

EST



MMX

# CAFFÈ B

JAPANESE ITALIAN CUISINE

Businesses and corporations invest in signages to promote their corporate image, for a well-designed signage increase brand awareness. For this reason, we have had the opportunity to work closely with companies from retailing, catering, hotel and recreational clubs, in addition to outdoor signage in public parks and gardens. The attractiveness of **One Metalliqx** metal finishes enhances an otherwise ordinary signage.

On top of its customizable unique appearance, **One Metalliqx** exclusive metal coating is much lighter, more durable and hard-wearing than solid metal. Since a mold is not needed for exclusive metal coating, a little creativity plus the wide range of finishes available, the investment you put into your signage need not be costly.

招牌對提升企業形象發揮著重要作用，因此企業和公司花費大量金錢投資於招牌上。一個精心設計的招牌可以產生正面影響，成功建立公司的企業形象。因此，我們與各個行業緊密合作，除了公園和花園外，還有零售店舖、餐廳、酒店和娛樂俱樂部等的室內外招牌，**One Metalliqx** 的金屬飾面增強了普通招牌原有的吸引力，提升整體空間格調。

**One Metalliqx** 專屬金屬塗層無需像固體金屬一樣進行鑄造，不但重量輕、耐用且耐磨。我們為您提供無限創意和海量飾面，您無需再花費高昂的金錢於招牌製作上。

1. Substrate : MDF  
Finish : Brass Jewel Oplum (US)
2. Substrate : MDF  
Finish : Aluminium Medium & Sleek
3. Substrate : Acrylic  
Finish : Bronze Caste
4. Substrate : Aluminium  
Finish : Graphite Garin

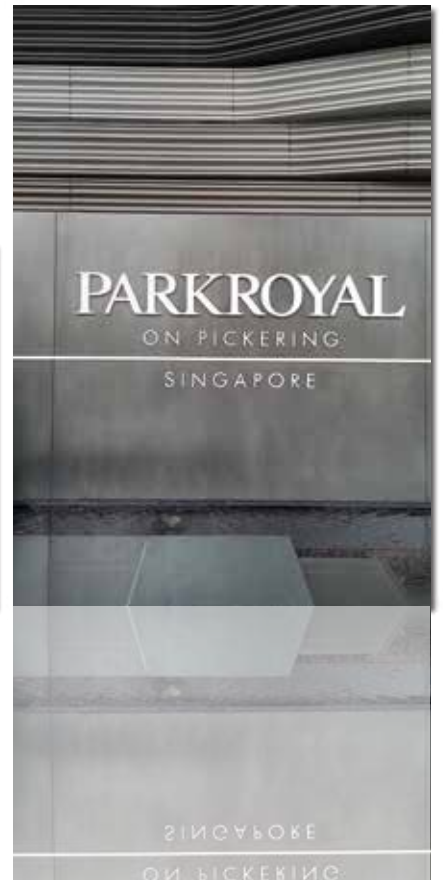
2.



3.



4.



# Designer Wall

## 裝飾牆壁

Exclusive metal coating bonds well to vertical surfaces and allows for a seamless metallic look which is otherwise not possible with sheet metal.

我們的專屬金屬塗層幾乎與任何底材都可完美結合，製造出一般金屬片不能做到的無縫外觀，讓裝飾牆壁擁有金屬效果。

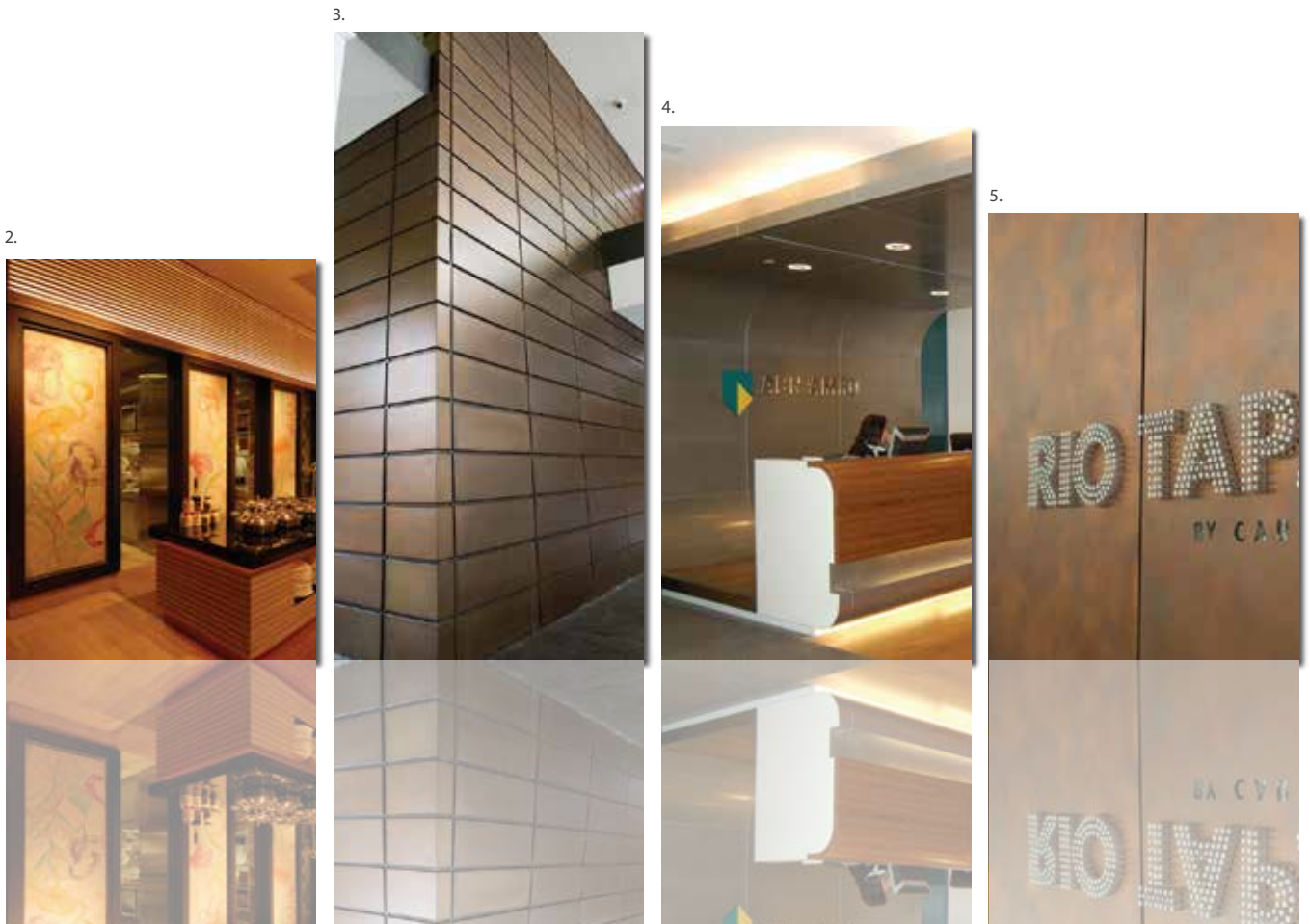
Decorative walls give an added dimension to any surrounding space and feature prominently in residential and commercial projects. The potential of concrete or cladded walls can now be extended to become the focal point in both interior and exterior space.

**One Metalliqx** provides the perfect solution to achieving a metal-finished effect to walls, as exclusive metal coating bonds well to vertical surfaces and to the most demanding of substrates. It allows for a seamless metallic look in a customizable textured finish that is otherwise not possible with sheet metal. as an added advantage, it comes with our warranty against cracking, delamination and peeling.

裝飾牆壁在住宅和商業項目中佔有重要地位, 兼具分隔空間及裝飾功能, 提升整體空間感。**One Metalliqx** 擴展了混凝土外牆或塗層牆壁的藝術潛力, 讓它們成為空間設計的焦點。

**One Metalliqx** 提供完美的解決方案, 我們的專屬金屬塗層幾乎與任何底材都可完美結合, 製造出一般金屬片不能做到的無縫外觀, 讓裝飾牆壁擁有金屬效果。**One Metalliqx** 的另一個額外優勢是設有保養期, 補修飾面可能出現的裂縫、分層或剝落等問題。

1. Substrate : Plasterboard  
Finish : Rusty Brown & Rusty Orange
2. Substrate : MDF  
Finish : Graphite Sleek
3. Substrate : Aluminium  
Finish : Antique Bronze Jewel Patina
4. Substrate : MDF  
Finish : Zinc Sleek
5. Substrate : MDF  
Finish : Copper Jewel Patina



# Sculptures 雕塑

As a vibrant company, One MetalliQx challenges the use of its products in all areas of art and design.

作為一間充滿活力的公司, One MetalliQx 於藝術和設計領域中靈活使用專屬金屬塗層。

The use of exclusive metal coating need not be confined to commercial or residential use. As a vibrant company, **One Metalliqx** challenges the use of its products in all areas of art and design. As such, we work closely with a team of artists and designers in producing works of art that look and feel like solid metal. The versatility of exclusive metal coating in this area is simply unmatched by any rival.

Whether it is restoring an existing sculpture or adding artistic value to a personal artefact, **One Metalliqx** is committed to the artistic potential of liquid metal, backed by our craftsmanship and expert knowledge of its application.

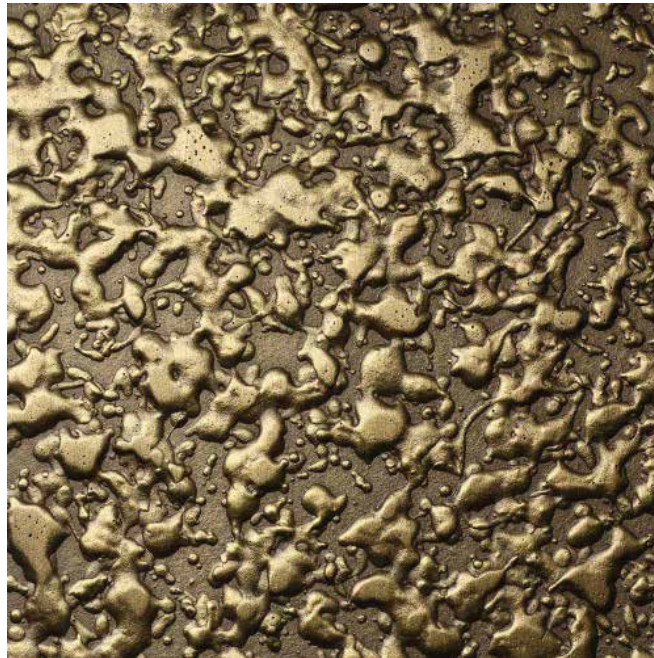
專屬金屬塗層的使用不一定限於商業或住宅用途。作為一間充滿活力的公司, **One Metalliqx** 於藝術和設計領域中靈活使用專屬金屬塗層, 我們與藝術家和設計師團隊緊密合作, 製作外觀和感覺像固體金屬的藝術品, **One Metalliqx** 專屬金屬塗層的多功能性是任何競爭對手都無可匹敵的。

無論是修復現有雕塑, 或是為個人藝術品增加藝術價值, **One Metalliqx** 的工藝和專業知識, 令我們充分發揮專屬金屬塗層的藝術潛力, 達到您所要求。

1. Substrate : Wood  
Finish : Bronze Classic
2. Substrate : Corten Steel  
Finish : Rusty Brown
3. Substrate : Resin  
Finish : Pewter - T Sleek
4. Substrate : Timber  
Finish : Pewter - T Sleek
5. Substrate : Resin  
Finish : Copper Jewel Patina



# Finishes 飾面



Apart from more than 200 standard metal finishes to choose from, **One Metalliqx** is able to customize metal colours to your specifications and preferences. Shown here are samples of colours and creative styling made possible with the use of our exclusive metal coating.

除了超過200個標準金屬飾面選擇外, **One Metalliqx** 能夠根據您的需求和偏好訂制金屬顏色。



# Private Residence @ Sentosa Cove - Singapore

Finish Used: Bronze Zada Wave  
Location: Sentosa Cove - Singapore  
Designer/Contractor: Hauslab Group  
Year: 2011



Finish Used: Copper Wilo  
Location: Fullerton Bay Hotel - Singapore  
Designer/Contractor: Nam Hong Builders Pte Ltd  
Year: 2014

# Fullerton Bay Hotel



# Price Waterhouse Coopers

Finish Used: Bronze Jewel Patina  
Location: Price Waterhouse Coopers - Singapore  
Designer/Contractor: Sunray Woodcraft  
Construction Pte Ltd  
Year: 2012



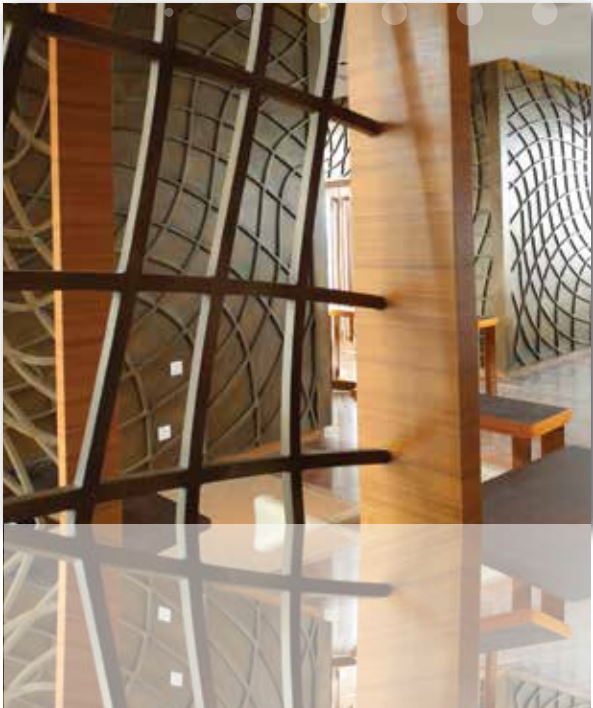
# The Shoppes At Marina Bay Sands

Finish Used: Bronze Sleek Jewel Patina  
Location: Marina Bay Sands - Singapore  
Designer/Contractor: Pico Arts International Pte Ltd.  
Year: 2009



# Traders Hotel Puteri Harbour

Finish Used: Bronze Jewel Patina +  
Bronze Caste Jewel Patina  
Location: Nusajaya, Johore - Malaysia  
Designer/Contractor: DDS Contracts &  
Interior Solutions Sdn Bhd  
Year: 2012



# YTL Residence - Kuala Lumpur Malaysia

Finish Used: Bronze Sleek Jewel Patina  
Location: Kuala Lumpur - Malaysia  
Designer/Contractor: YTL Design Group  
Year: 2008



# On Pedder Boutique

Finish Used: Customized  
Location: Ngee Ann City - Singapore  
Designer/Contractor: Inprodec Associates (S)  
Pte Ltd  
Year: 2007



Finish Used: Brass Opium  
Location: Ngee Ann City - Singapore  
Designer/Contractor: Redwood Interior Pte Ltd  
Year: 2011

# Loewe Boutique



# One Metalliqx exclusive metal coating Data Sheet

## PRODUCT SPECIFICATION

1. Undercoat Primer: MX100 Primer (Part A  $\pm 80\%$  & Part B  $\pm 20\%$ )
2. **One Metalliqx** exclusive metal coating: MX200 (Part A  $\pm 90\%$ , Part B & C  $\pm 10\%$ )
3. Topcoat Non-Yellowing Sealant: MX300 Top Coat Semi-Gloss (Part A  $\pm 80\%$  & Part B  $\pm 20\%$ )

## COMPOSITE OF ONE METALLIQX EXCLUSIVE METAL COATING

**One Metalliqx** exclusive metal coating consists of fine metal granules combined with a specially formulated polymer binder that is stable, extremely strong and bonds well to substrates. The metal range includes Aluminium, Brass, Bronze, Copper, Iron, Stainless Steel and various other alloys.

## PREPARATION OF SURFACES

Before the spraying process begins, the surface of the intended substrate must be dust-free and cleaned of oil and other foreign substance. This will ensure a satisfactory bonding of the coating to the substrate. Any contaminants will affect the quality of the finish. Imperfect or damaged surfaces will become apparent in the finish if these have not been properly fixed. An Undercoat Primer is then applied to enhance the surface before layers of coating are applied. The use of fillers are recommended for particular substrates before this process begins.

## APPLICATION PROCESS

Metal coatings are applied by a cold spraying method with a spray gun in a continuous motion, layer after layer. The thickness of the layer of metal coating ranges between 0.5mm-2mm depending on the desired finish or effect. This can be carried out at room temperature in a well-ventilated area free of dust. Desired effects are achieved by controlling the pattern of spraying and in adjusting the operation of the spray gun. The metallic finish is then cured for approximately 24 hours. The result is a durable coating which has a strong resistance to delamination, cracking or peeling.

## SHEEN OF ONE METALLIQX EXCLUSIVE METAL COATING

**One Metalliqx** uses sanding and polishing pads of between 180 to 2,000 grades to bring out the sheen of the finishes.

## REQUIREMENT FOR SUBSTRATES

**TIMBER/MDF** : Substrates must be in their raw and dry state. Recommended thickness of 6mm and above for stability with structure. Joints must be firmly fastened with screws and glued properly. No paints, varnishes, silicon or even oil based putties should be used. Cracks, holes or groove lines must only be puttied with non-oil based filler or auto body filler and sanded smooth to a level surface.

**SHEET METAL** : Surface must be thoroughly cleaned and free from oil, rust, silicon or any foreign particles. Specified metal primer recommended or supplied by **One Metalliqx** is then applied to the surface area. Existing painted metal surfaces are not suitable for **One Metalliqx** exclusive metal coating and thus has to be sanded back or sand blasted to the raw state and then primed again with **One Metalliqx** metal primer. No welding is to be done after the surface is coated with **One Metalliqx** exclusive metal coating.

**ACRYLIC/PLASTICS** : Surface to be sanded heavily to achieve better bonding and then primed with **One Metalliqx** acrylic and plastic primer.

**FIBREGLASS** : Surface to be sanded heavily to achieve better bonding and then cleaned with a recommended solvent before applying **One Metalliqx** exclusive metal coating.

**CONCRETE/GRC/GRG** : Surface should be dry and free from oil or any foreign particles. Imperfections, holes or cracks should be filled with non-oil based filler and sanded to a level surface and primed with **One Metalliqx** concrete, GRC and GRG primer.

## SURFACE PROTECTION

The surfaces of **One Metalliqx** finished product is well protected and sealed with a high-quality interior/ exterior non-yellowing sealant to freeze the desired oxidized level, effect and finish or simply prevent natural oxidization of metal (if not preferred by Client) from occurring. This helps to minimize maintenance for the Client.

## MAINTENANCE OF SURFACE

Routine cleaning can be done with warm, mild soapy water. More persistent stains and smudges can be removed with an ammonia-free cleaner or turpentine recommended by **One Metalliqx**.

## WARRANTY OF SURFACE

With factory standard application and quality of the product, **One Metalliqx** exclusive metal coating is warranted from cracking, delamination and peeling for a period of up to 2 years.

## LARGE SCALE SURFACE SPREAD OF FLAME TEST

PSB Corporation conducted the above spread of flame test onto Calcium Silicate Board on 27 Apr 2005. The test was to determine the spread of flame of the surface of a material or a combination of materials to support the spread of flame across its surface and the test results show that the sample tested has a Class One Surface Spread of Flame Household Chemical Resistance according to British Standard.

# One MetalliQx 專屬金屬塗層數據表

## 產品規格

1. 底漆：M100底漆 (Part A ±80% & Part B ±20%)
2. One MetalliQx 專屬金屬塗層：MX200 (Part A ±90%, Part B & C ±10%)
3. 面層的不泛黃密封劑：MX300半光面漆 (Part A ±80% & Part B ±20%)

## One MetalliQx 的組成

One MetalliQx 專屬金屬塗層由細金屬顆粒，結合特殊配製的聚合物黏合劑組成。黏合劑穩定、強韌而且與底材接合良好。金屬系列包括鋁、黃銅、青銅、銅、鐵、不銹鋼和各種其他合金。

## 預備底材表面

在噴塗過程開始之前，底材表面必須無塵，並需清潔所有油跡和異物，確保塗層與底材可以完美黏合。任何污染物都會影響飾面的品質。如果底材表面上的破損未被正確修復，上完塗層後這些損壞將變得更明顯。在噴塗前使用底漆，可以增強底材表面的平滑度，我們建議在噴塗開始之前對底材使用填料。

## 噴塗流程

專屬金屬塗層採用冷噴方法，用噴槍一層一層連續噴灑上色。塗層厚度為 0.5mm-2mm，具體取決於所需的飾面或效果。我們會在室溫、無灰塵及通風良好的區域下進行噴塗工作，通過控制噴塗模式和調整噴槍操作，達到理想的飾面效果。完成後擺放約24小時，便可擁有一件耐用、具強力防分層、防裂縫或防剝落的金屬飾面產品。

## 專屬金屬塗層的光澤

One MetalliQx 使用180 到 2,000 級的打磨和拋光墊，以突出飾面光澤。

## 對底材的要求

木材/中密度纖維板：底材必須在原始和乾燥狀態，推薦厚度為6mm或以上。接駁位必須用螺釘牢固固定並正確黏合，不應使用油漆、光油、矽甚至油性黏土。裂紋、洞孔或坑紋必須用非油性填料或車身填料填好，並把表面打磨光滑。

鋁金：表面必須徹底清潔，保證無油跡、鐵銹、矽或任何異性粒子，然後塗上 One MetalliQx 推薦或提供的指定金屬底漆。若底材表面有其他的金屬塗漆，必須砂光或砂噴回到原始狀態，之後再次用 One MetalliQx 金屬底漆灌注。表面塗有 One MetalliQx 專屬金屬塗層後，則無需進行焊接。

亞加力/塑膠：底材表面要經多次打磨，達至更好的黏合效果，然後塗上 One MetalliQx 亞加力和塑膠的專用底漆。

玻璃纖維：底材表面要經多次打磨，達至更好的黏合效果。在使用 One MetalliQx 專屬金屬塗層前，使用我們推薦的溶劑清潔。

混凝土/玻璃纖維增強混凝土/玻璃纖維增強石膏制品：表面必須徹底清潔，保證無油質、鐵銹、矽或任何異性粒子。有瑕疵的表面、洞孔或裂紋應填入非油性填料及打磨至光滑，並塗上 One MetalliQx 混凝土、玻璃纖維增強混凝土和玻璃纖維增強石膏制品的專用底漆。

## 表面保護

塗上 One MetalliQx 專屬金屬塗層後，產品表面將得到高度保護。我們以高品質的不泛黃密封劑密封飾面，凍結飾面氧化度、保持塗層的金屬效果，防止非客戶要求的氧化情況發生，減少客戶保養產品的需要。

## 飾面保養

日常可用溫暖及溫和的肥皂水進行清潔，使用 One MetalliQx 推薦的無氨清潔劑或松節油，可以去除更頑固的污漬和污痕。

## 保養期


One MetalliQx 專屬金屬塗層採用工業級標準，設有2年保養期，補修金屬飾面可能出現的裂縫、分層和剝落等問題。

## 火勢蔓延測試

新加坡生產力與標準局於2005年4月27日為 One MetalliQx 專屬金屬塗層進行火勢蔓延測試，目的是分析不同材料表面或材料組合的火勢蔓延情況，被檢測的樣品根據英國標準獲評為「一級防止家居化學品火勢蔓延」產品。

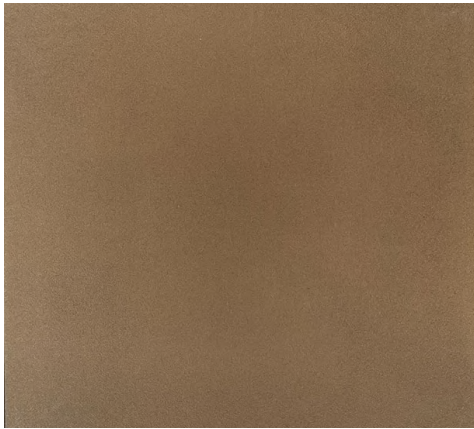
# Swatches

## 色板



古銅系列	P. 27
石墨系列	P. 29
鋅系列	P. 30
紅銅系列	P. 31
錫系列	P. 33
青銅系列	P. 34
鋁系列	P. 39
鋁錫合金系列	P. 41
黃銅系列	P. 42
銹色系列	P. 45
鎳系列	P. 47

## 古銅系列



Antique Bronze

IPAB001



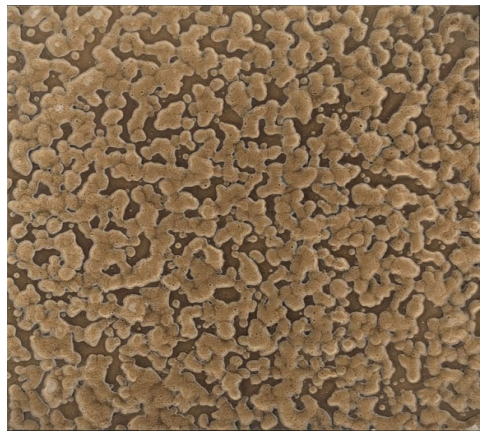
Antique Bronze Aura

GDAB002



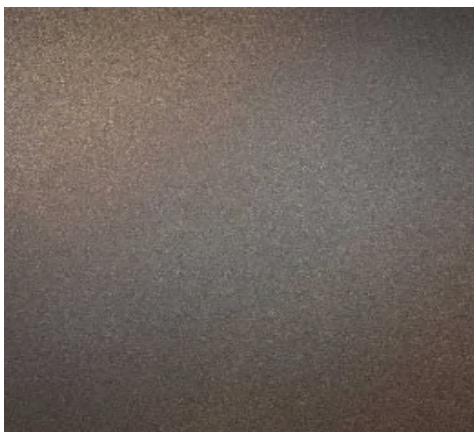
Antique Bronze Cast

SCAB003



Antique Bronze Heavy Texture

RVAB004



Antique Bronze Jewel Patina

GDAB005



Antique Bronze Kabe

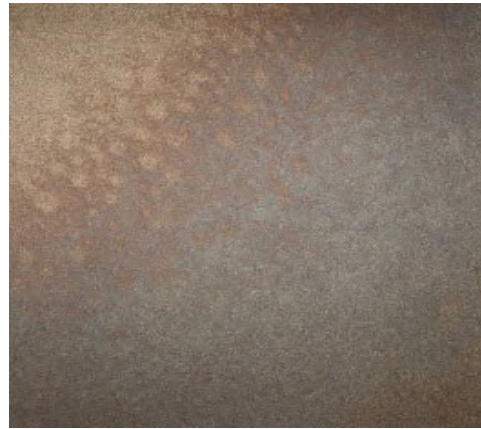
IPAB006

## 古銅系列



Antique Bronze Pits

RCAB007



Antique Bronze Ruby

GDAB008



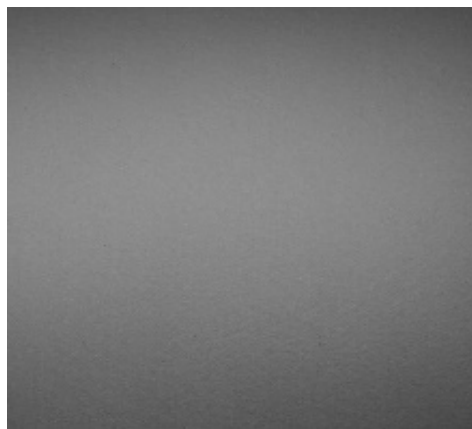
Antique Bronze Zada Wave

PPAB009

## 石墨系列



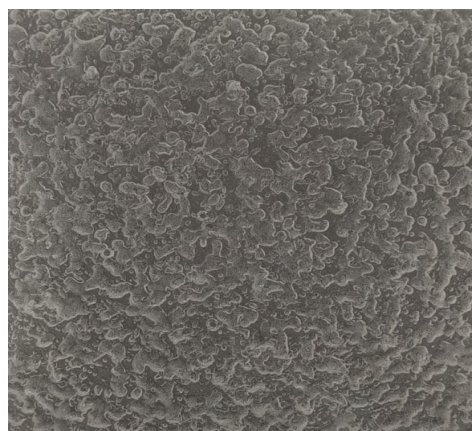
Graphite-Zada Wave PPGP001



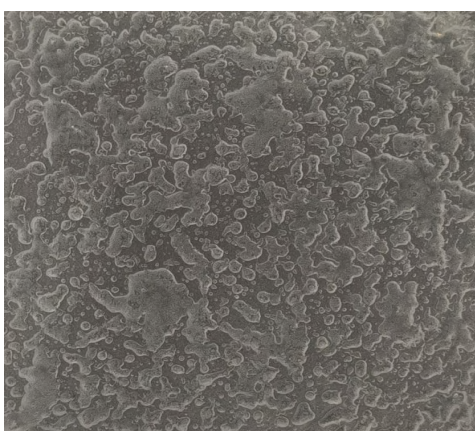
Graphite-Sleek HLG002



Graphite-Pits CMGP003



Graphite-Light Tex RVGP004

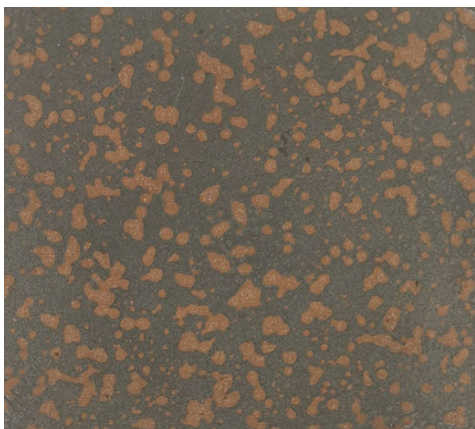


Graphite-Heavy RVGP005



Graphite-Hairline HLG006

## 石墨系列



Graphite-Fusion

IPGP007

## 鋅系列



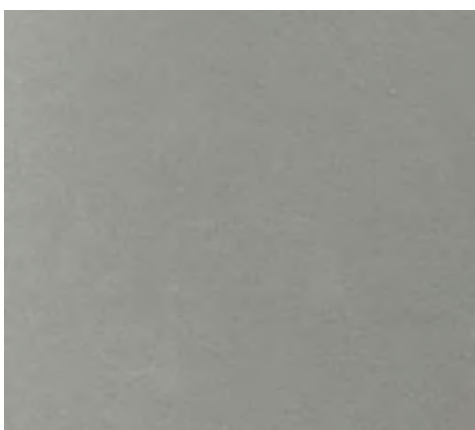
Zinc Hairline

HLZI001



Zinc Polish

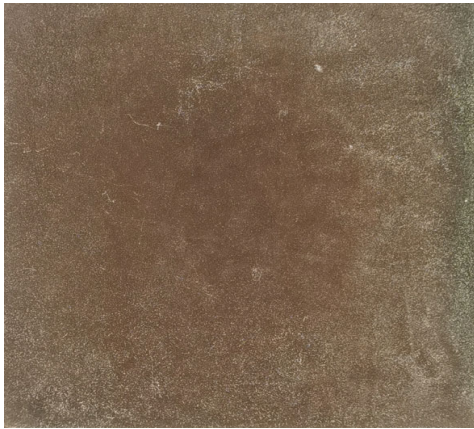
HLZI002



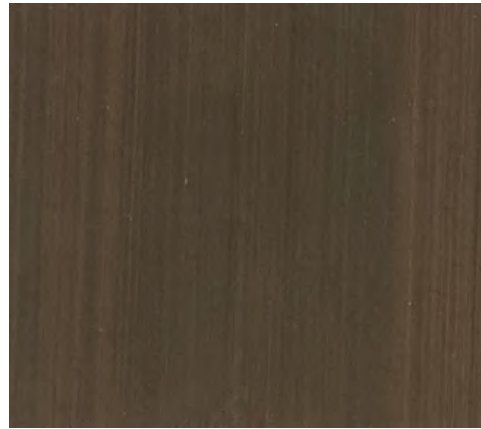
Zinc Sleek

HLZI003

## 紅銅系列



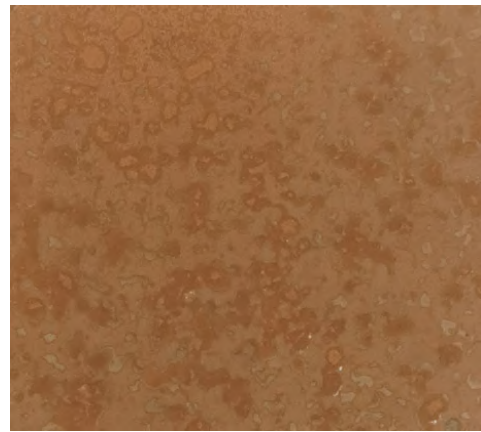
Copper-Non Directional      SCCP001



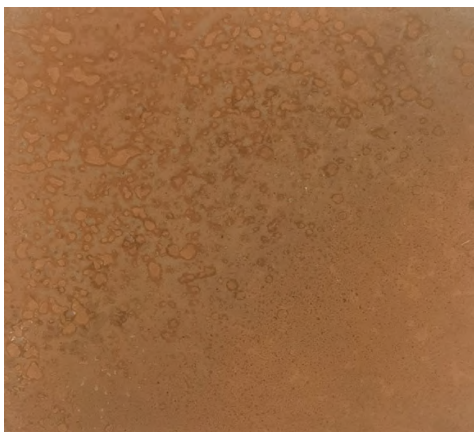
Copper-Hairline      HLCP002



Copper-Wilo      SCCP003



Copper-Smooth Texture Pearl Patina      IPCP004



Copper-Smooth Texture Pearl Patina-2      GDCP005



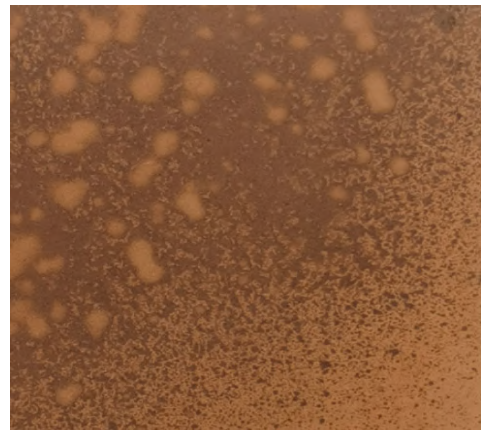
Copper-Shimmer      HLCP006

## 紅銅系列



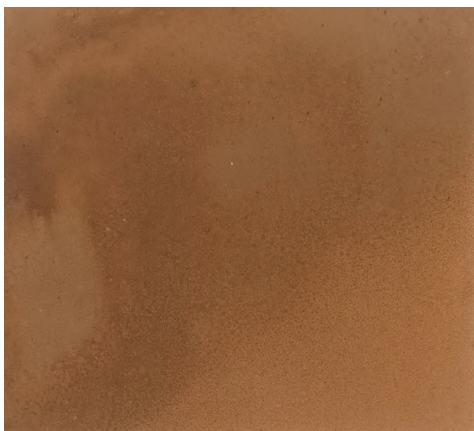
Copper-Sleek

HLCP007



Copper-Runa

GDCP008



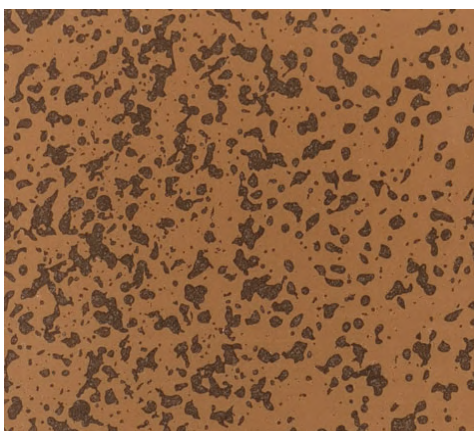
Copper-Ruby

GDCP009



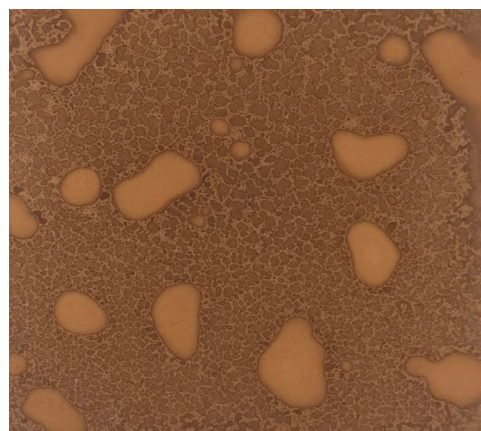
Copper-Pitted

IPCP010



Copper-Pits

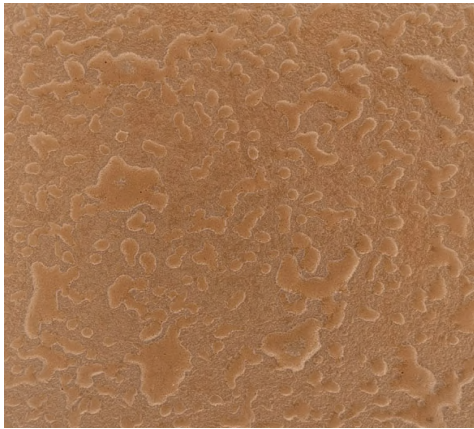
IPCP011



Copper-Lake Jewel Opium

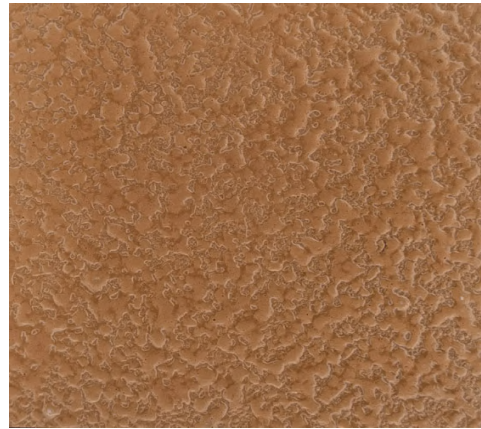
IPCP012

## 紅銅系列



Copper-Heavy Tex

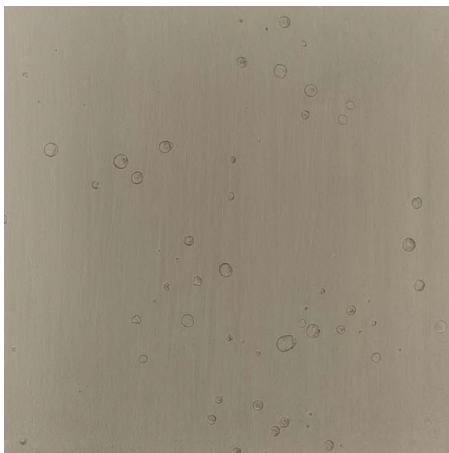
RVCP013



Copper-Fine

RVCP014

## 錫系列



Tin

IPTI001



Tin Polish

HLTI002



Tin Sleek No Top Coat

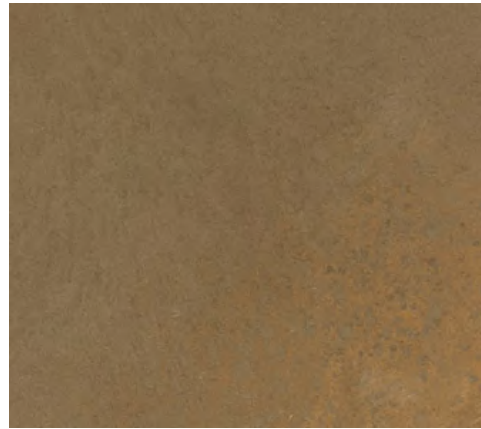
HLTI003

## 青銅系列



Bronze Candy

GDBZ001



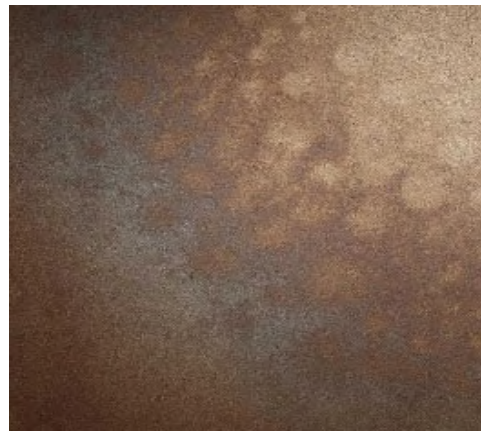
Bronze Caste Jovcl Patina

GDBZ002



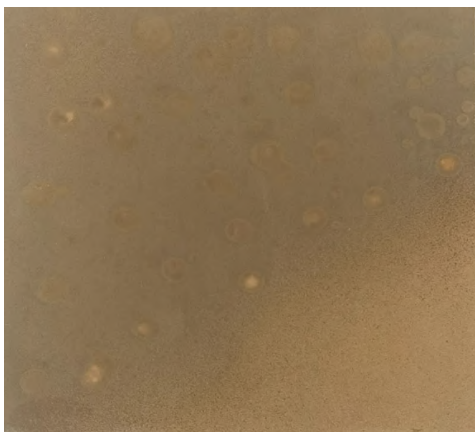
Bronze Caste Ruby

GDBZ003



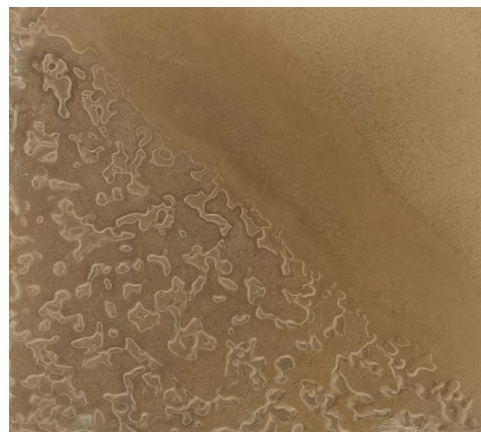
Bronze Ruby

GDBZ004



Bronze Runa

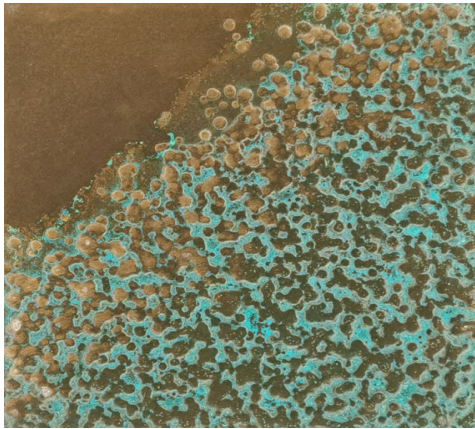
GDBZ005



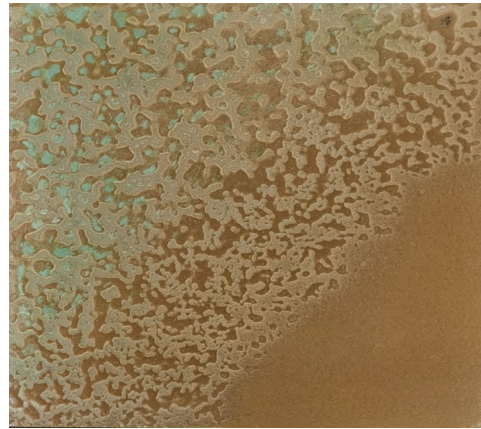
Bronze Classic

RABZ006

## 青銅系列



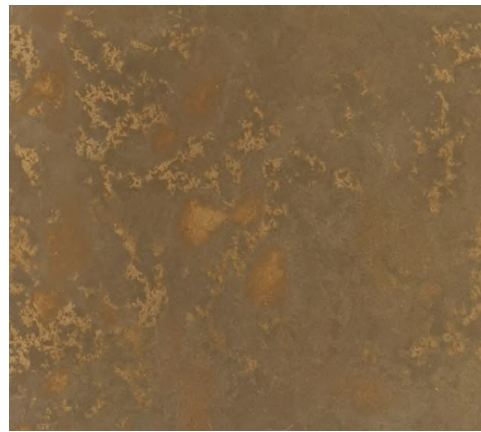
Bronze Jewel Patina RABZ007



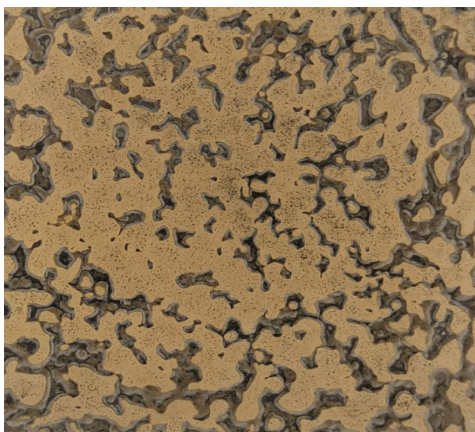
Bronze Classic Rust Patina RABZ008



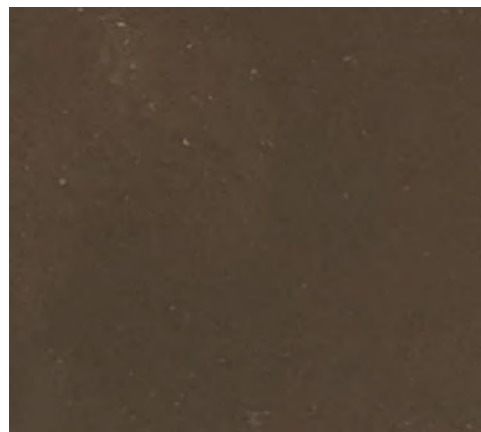
Bronze Kabe IPBZ010



Bronze Lake Jewel Opium IPBZ011

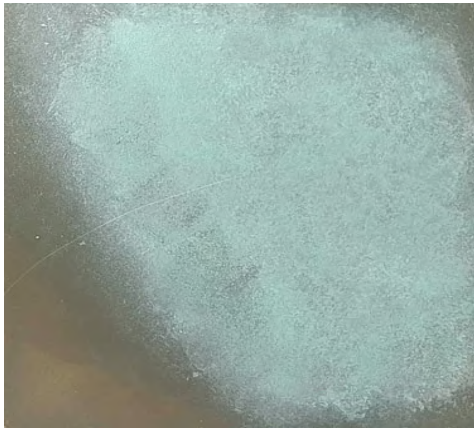


Bronze Medium RCBZ012



Bronze Non Directional SCBZ013

## 青銅系列



Bronze Patina

IPBZ014



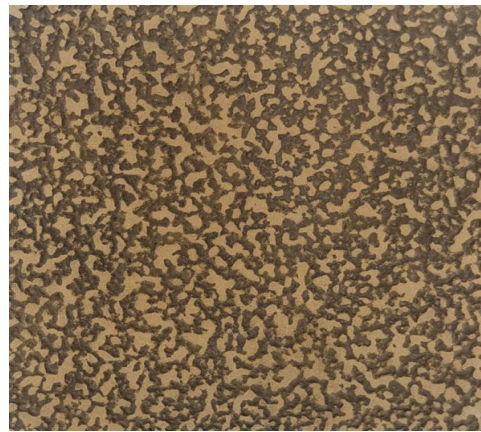
Bronze Patina Chain Board

RABZ015



Bronze Pits

IPBZ016



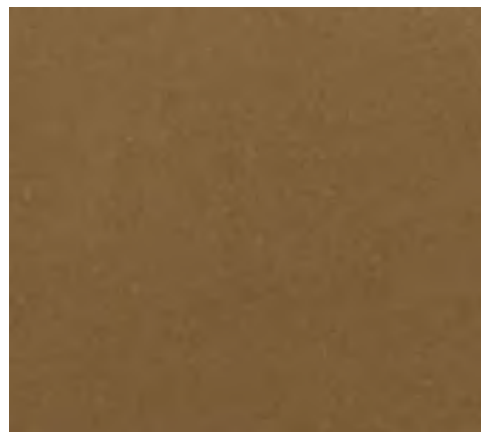
Bronze Sandcast

RCBZ017



Bronze Shimmer

SCBZ018



Bronze Sleek

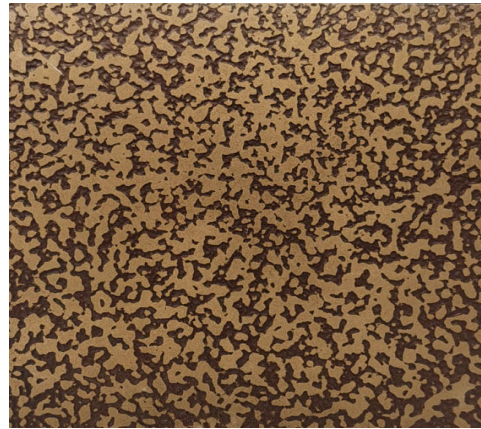
SCBZ019

## 青銅系列



Bronze Twinni

PPBZ020



Bronze UGNT

RCBZ021



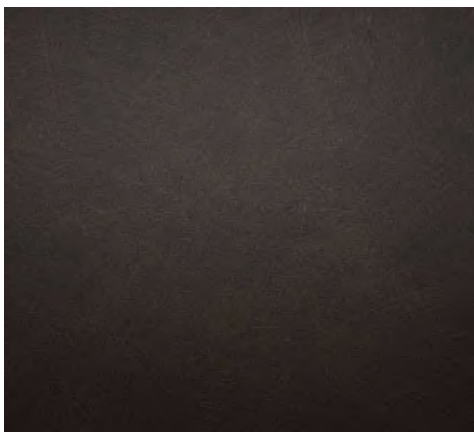
Bronze Unknow 2

PPBZ022



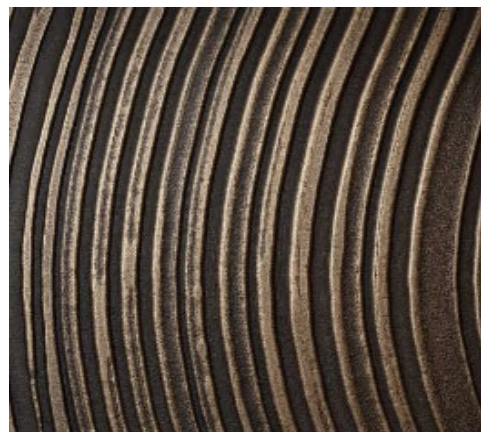
Bronze Unknow

PPBZ023



Bronze Wilo Non Directional

SCBZ024



Bronze Zada Wave 3

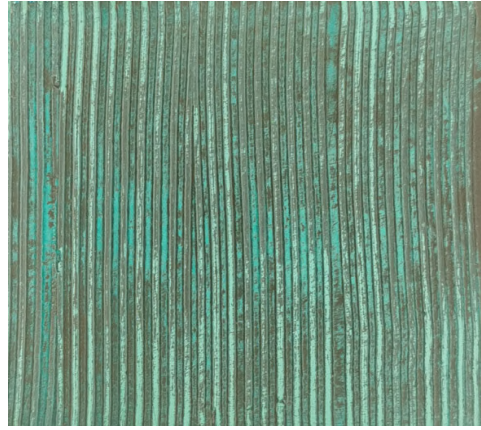
PPBZ025

## 青銅系列



Bronze Zada Wave

PPBZ026



Bronze Zada Wave Patina

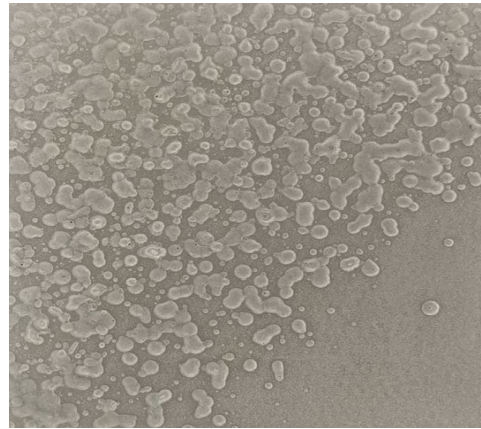
PPBZ027

## 铝系列



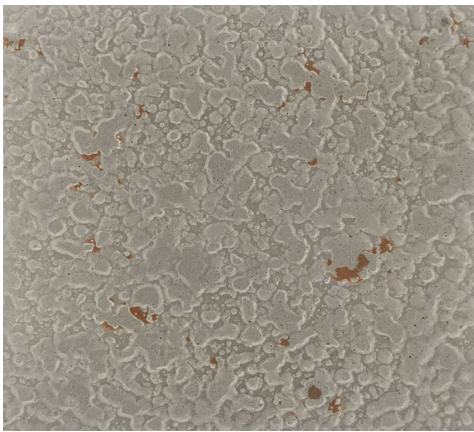
Aluminium

HLAL001



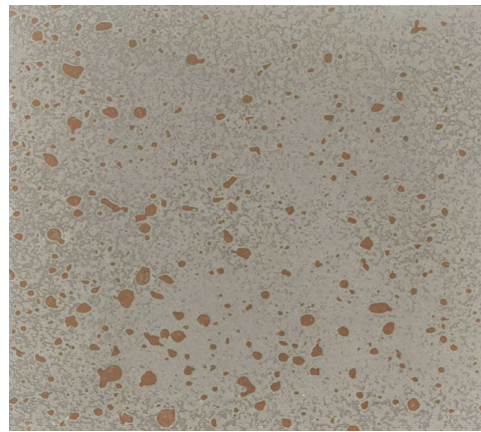
Aluminium Classic

RAAL002



Aluminium Fusion Heavy Texture

RAAI 003



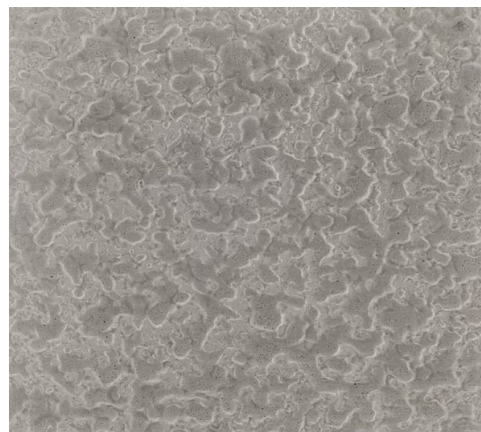
Aluminium Fusion Light Texture

GDAI 004



Aluminium Hairline

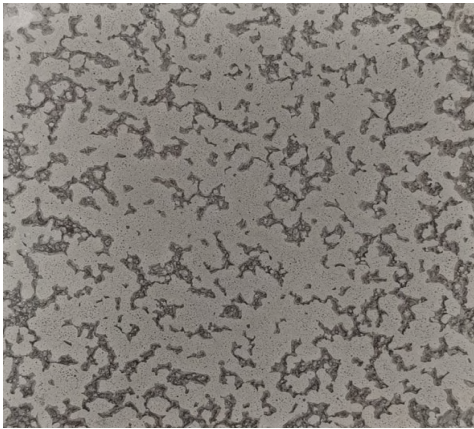
HLAL005



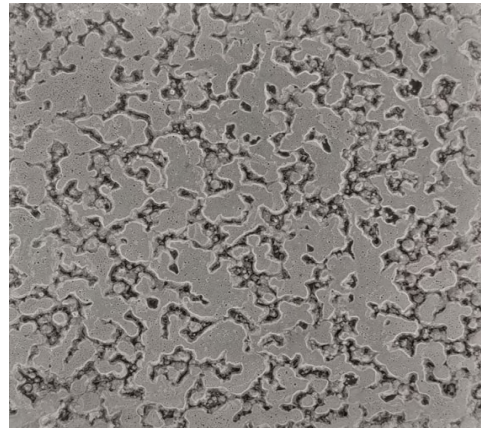
Aluminium Heavy

RVAL006

## 铝系列



Aluminium Light Texture RCAL008



Aluminium Medium RCAL009



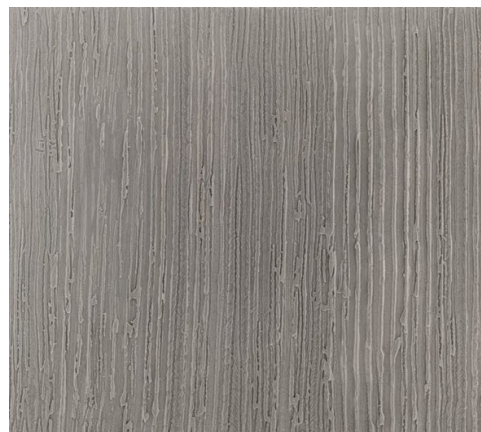
Aluminium Pits CMAL010



Aluminium Rusty RUAL011

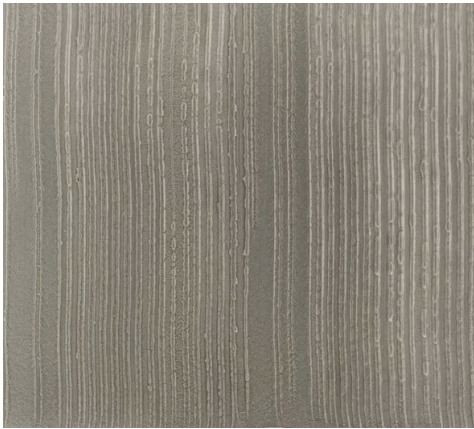


Aluminium Rusty 2 RUAL012



Aluminium Tree Bark PPAL013

## 铝系列



Aluminium Zada Wave PPAL014

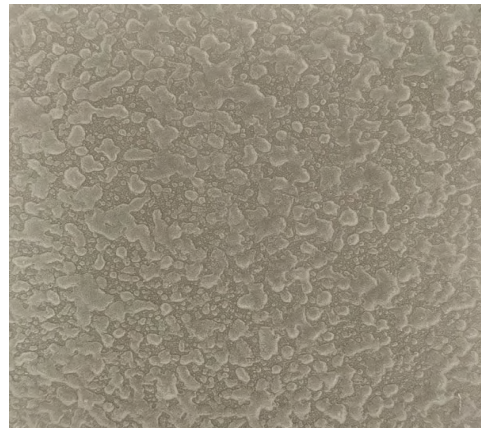


Aluminium Rusty Mira RUAL015

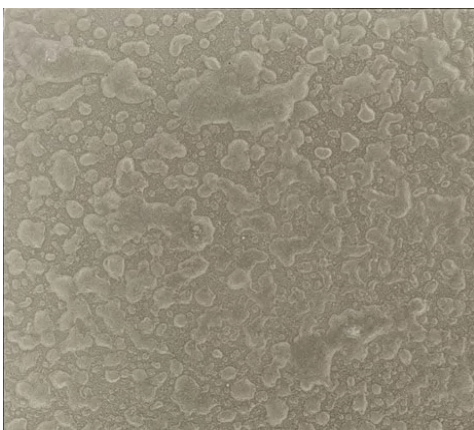
## 铝锡合金系列



Pewter-Sleek HLPT001

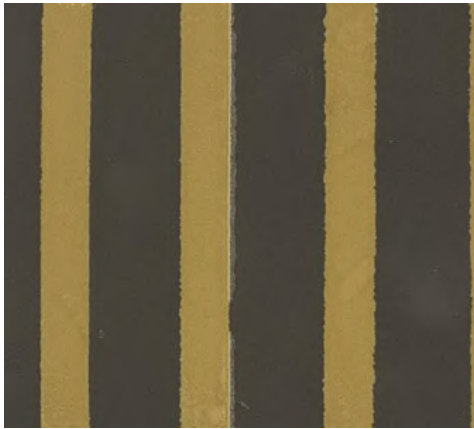


Pewter-Pits RVPT002



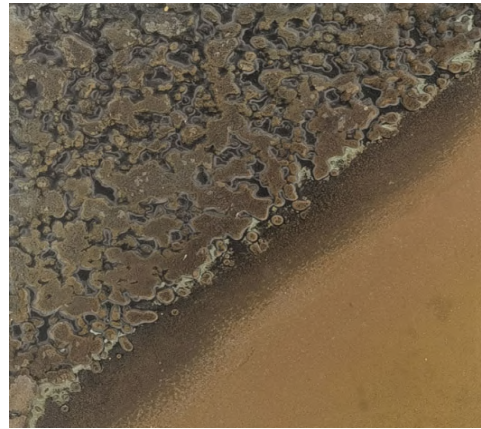
Pewter-Medium RVPT003

## 黄铜系列



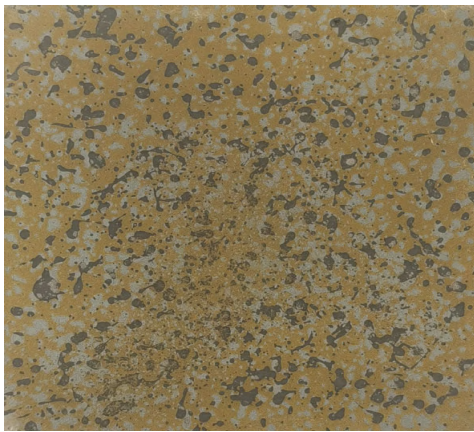
Brass Fusion Lines

PPBR001



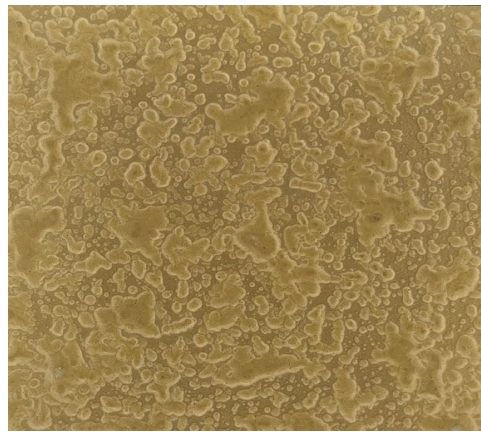
Brass Classic Patina

RABR002



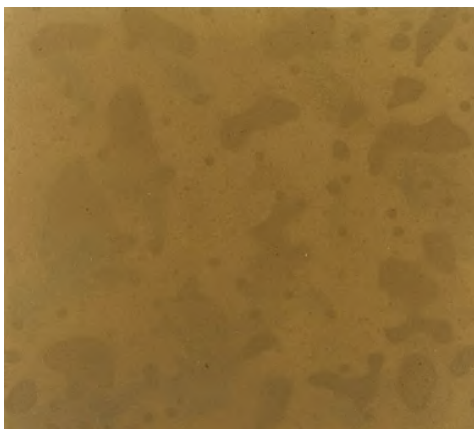
Brass Graphite Fusion

IPBR003



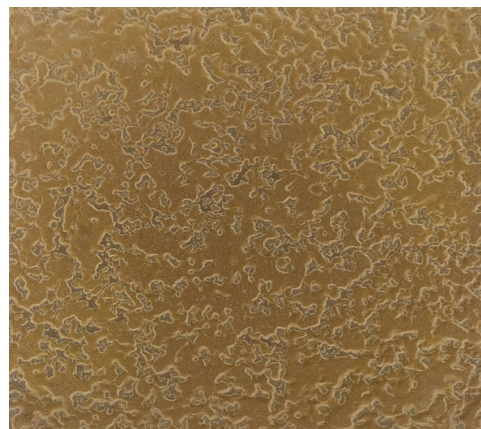
Brass Heavy

RVBR004



Brass Lake Jewel Opium

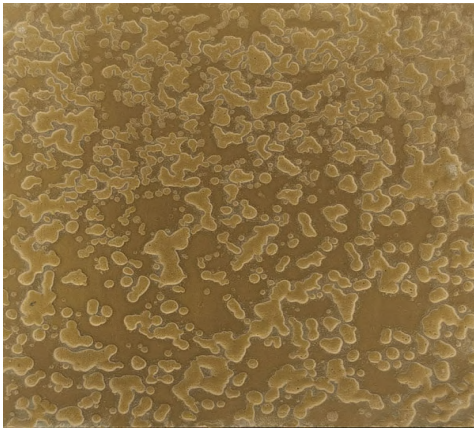
IPBR005



Brass Light

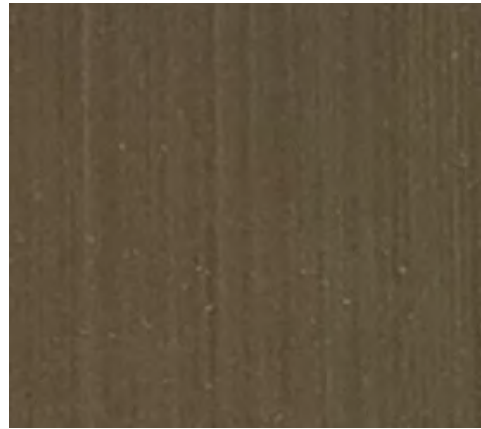
RCBR006

## 黄铜系列



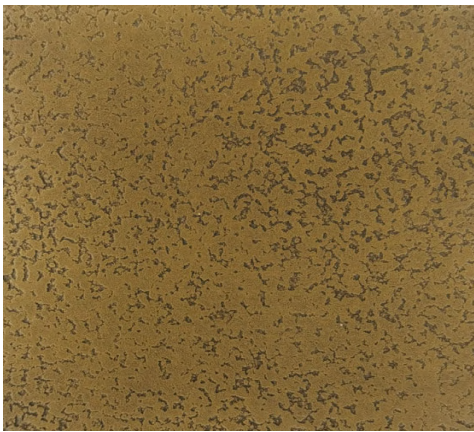
Brass Moderate

RVBR007



Brass Opium Hairline

HLBR008



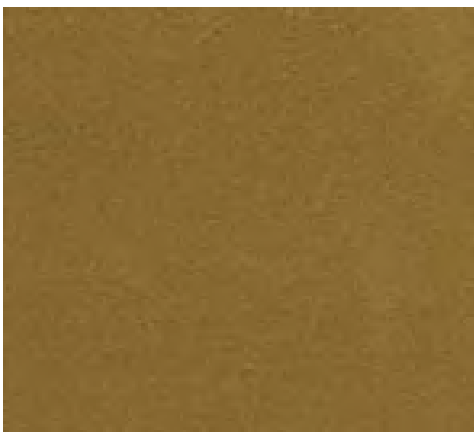
Brass Pitted

RCBR009



Brass Ruby

IPBR010



Brass Sleek

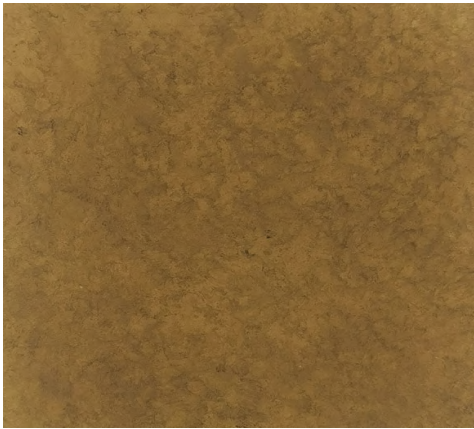
SCBR011



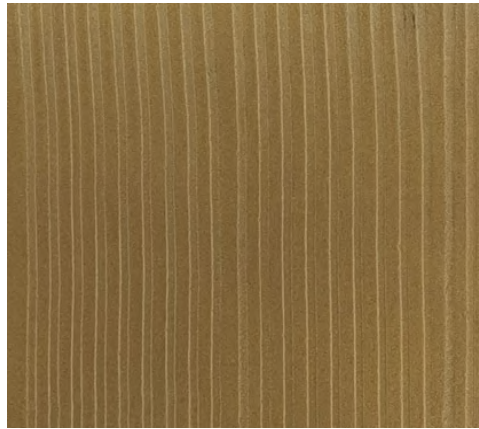
Brass Sleek Shimmer

SCBR012

## 黄铜系列



Brass Smooth Pearl Patina IPBR013



Brass Zada Wave PPBR014



Antique Brass Lake Jewel Opium  
GDBR015

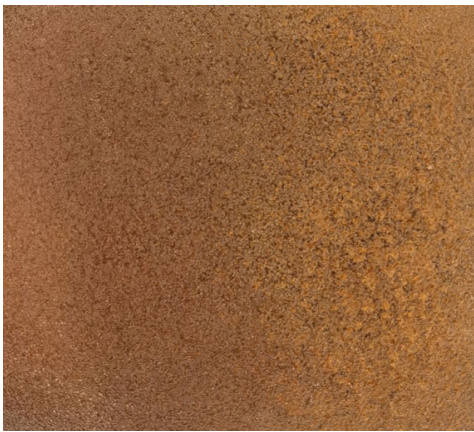
## 銹色系列



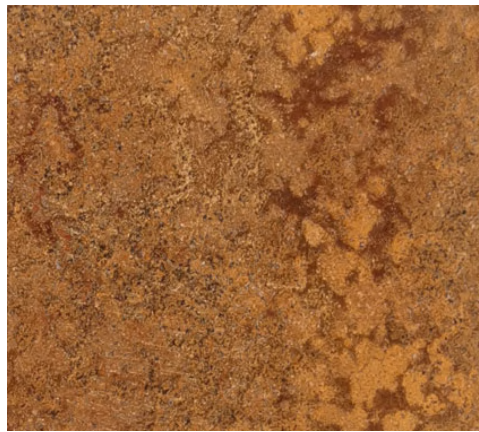
Rusty-Orange Zada Wave      RURU001



Rusty-Orange Corten      RURU002



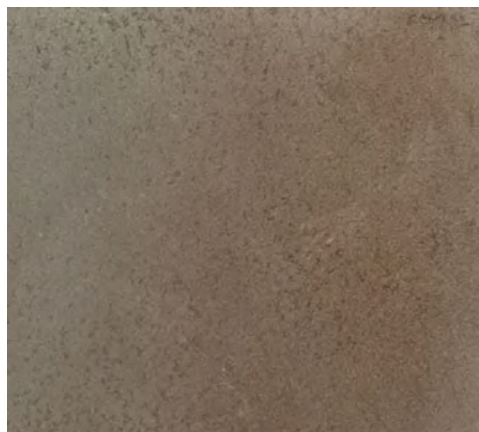
Rusty-Orange-2      RURU003



Rusty-Orange      RURU004

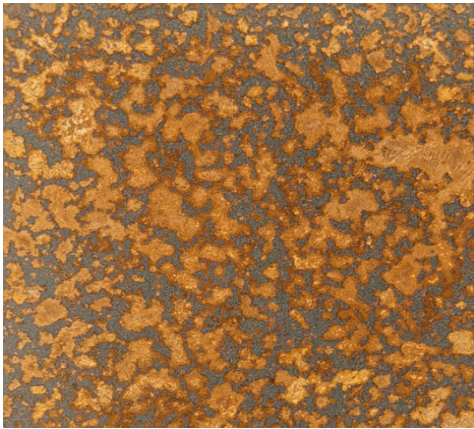


Rusty-Mira      CMRU005



Rusty-Mira2      CMRU006

## 銹色系列



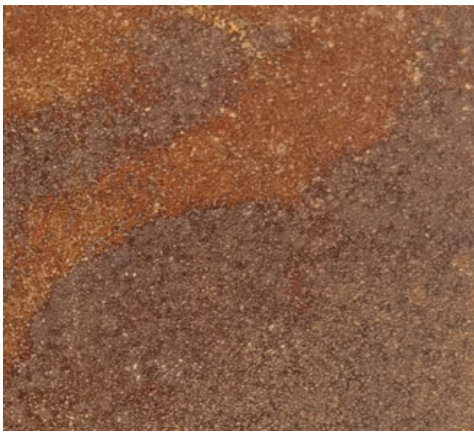
Rusty-Marine

RURU007



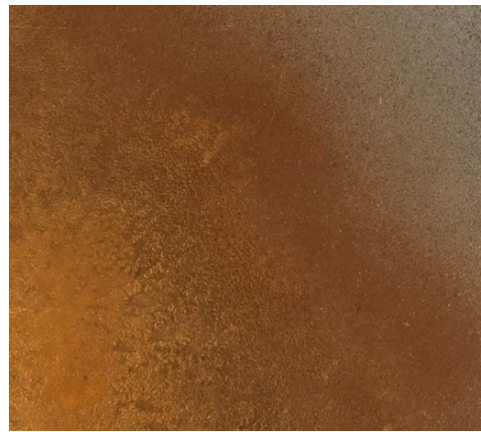
Rusty-Iron Cast

CMRU008



Rusty-Copper Rust

RURU009



Rusty-Bronze Patina

CMRU010



Rusty-Brown-2

RURU011



Rusty-Brown

RURU012

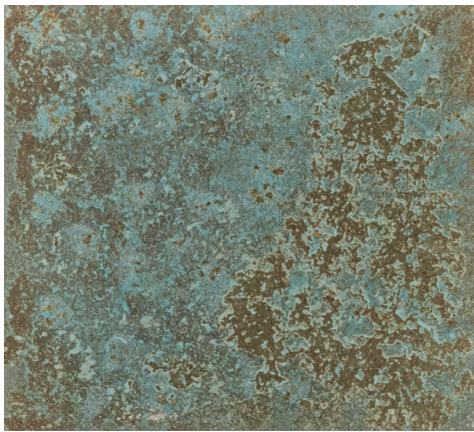
## 锈色系列



Rusty-Brown-Corten RURU013



Rusty-Brown-Zada-Wave RURU014

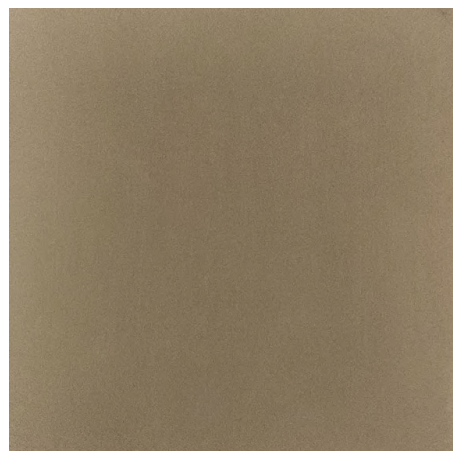


Rusty-Copper-Light-Texture-Patina RURU015

## 镍系列



Nickel-Sleek HLNK001



Nickel-Polish SCNK002

## Why choose One Metalliqx exclusive metal coating

- \* Bonds well to virtually any stable substrate
- \* Durable and hard wearing
- \* Seamless finish
- \* Cost-effective and time-efficient
- \* Looks, feels and performs like solid metal, without the weight
- \* Wide range of metal finishes to choose from Customizable to achieve desired finishes and effects

## 為什麼選擇 One Metalliqx 專屬金屬塗層

- \* 幾乎任何底材都可以很好地黏合
- \* 耐用和耐磨
- \* 無縫飾面
- \* 符合經濟效益和時間效益
- \* 外觀、感覺和性能像固體金屬，但沒有固體金屬的重量
- \* 廣泛的金屬飾面可供選擇
- \* 可自訂所需飾面效果

## Some of our other projects include

- \* Bank Negara Malaysia
- \* Banyan Tree Singapore
- \* Barclays
- \* BBOX-Bangalore, India
- \* Capita Land
- \* Civil Aviation Authority of Singapore (CAAS)
- \* CPG Corporation
- \* Crystal Jade Restaurant
- \* Epson Solution Centre
- \* Far East Organization
- \* Marina Bay Sands Singapore
- \* National Parks Singapore
- \* Novotel Hotel-Beijing, PRC
- \* NTUC Awareness Centre
- \* Pontiac Land Group
- \* Resort World Sentosa
- \* Singapore Press Holding
- \* Timberland
- \* World Sport Group
- \* YTL Residence-Kuala Lumpur, Malaysia

## 我們的產品 案例包括：

- \* 馬來西亞國家銀行
- \* 新加坡悅榕莊
- \* 巴克萊銀行
- \* BBOX-Bangalore
- \* 新加坡嘉德置地集團
- \* 新加坡民航局
- \* CPG 集團
- \* 水晶翡翠餐廳
- \* Epson Solution Centre
- \* 遠東機構
- \* 濱海灣金沙酒店
- \* 新加坡國家公園
- \* 諾富特和平酒店(北京市)
- \* NTUC中心
- \* Pontiac Land Group
- \* 聖淘沙世界度假村
- \* 新加坡報業控股
- \* Timberland
- \* 世界體育集團
- \* YTL 公寓(馬來西亞)

