



AUTOMATED
CASE
PACKING
DONE
RIGHT



You can automate your washdown pack-off areas.


Stainless Steel Construction

Prioprietary designs to withstand the harshest washdown conditions.

Reduced Sanitation Time

Automated cells designed for quick sanitation.

Manually packed cases increase the risk of contamination and slow production, costing manufacturers billions annually in recalls and downtime. **Washdown automation reduces cross-contamination risks by 80%**, delivering the speed and hygiene *manual labor can't match*.

A close-up photograph of two white KUKA industrial robotic arms with blue cables, positioned over a conveyor belt in a factory. The arms are equipped with specialized end-effectors for handling small, rectangular items, likely food packaging, on the belt. The background shows a blurred industrial environment with overhead lighting.

Only Nelson Integrated provides turn-key washdown end-of-line systems.



CUSTOM DESIGNED AUTOMATION FOR YOUR CASE PACKING NEEDS

Nelson Integrated designs for the *toughest* case packing challenges.

RSC and Display Cases

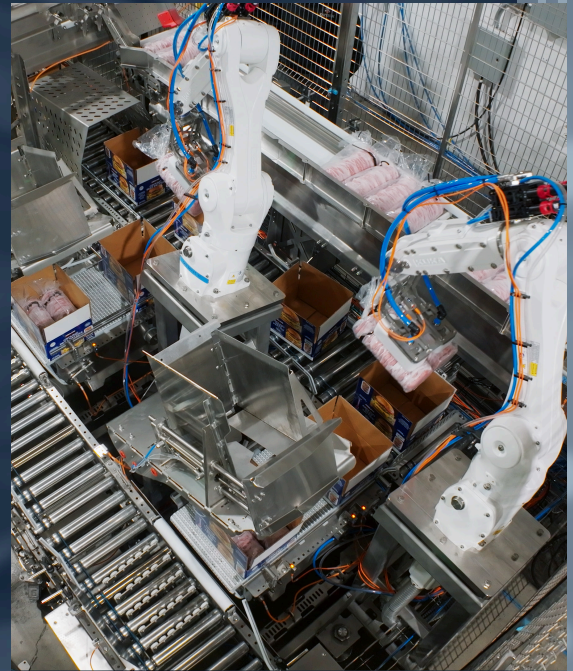
Reliable packing of RSC and Display Cases with vertical pack capability.

Flexible Automation


Streamline SKU transitions and variety case packing with precision and minimal downtime.

Custom Integration

Designed to fit your plant's layout and production needs.



Deliver consistent results with precise case-packing robots.
Save time during sanitation with washdown-ready designs.
Avoid the headaches with turn-key automation tailored to your plant.

A woman with long dark hair is shown in profile, looking down at a handheld device she is holding. She is in a factory setting, with a robotic arm and various pieces of machinery visible in the background. The lighting is somewhat dim, and the overall tone is industrial.

Nelson Integrated's custom
washdown case-packers
keep production on track.

Ready to take control of
your case packaging?

Contact Nelson Integrated today.

www.nelsonintegrated.com