

# TreeGuard Vegetation Management System



## Advanced Monitoring for Safe Rail Operations

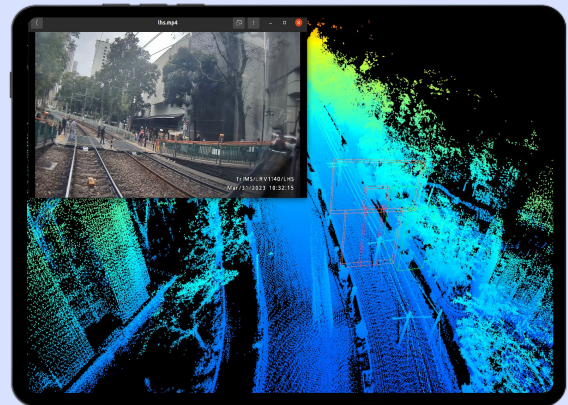
With TreeGuard VMS, monitor vegetation encroachment with precision.

- ✓ Tree Intrusion into KE
- ✓ Risk Level Analysis
- ✓ Tree Growth Prediction

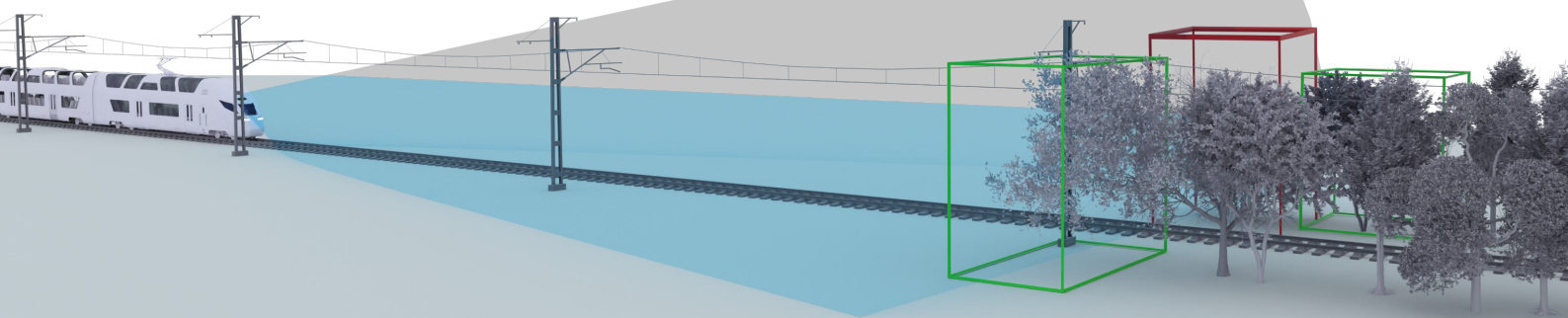
## Actionable Insights into Rail Corridor Tree Intrusion

TreeGuard automatically scans for vegetation encroachment into the rail corridor.

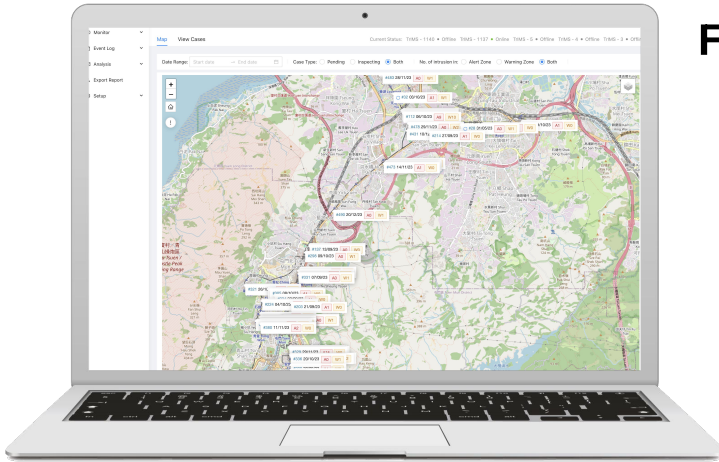
It provides detailed 3D models of the rail corridor for accurate analysis.



Harness the power of 3D for sustainable and efficient vegetation management



# TreeGuard Vegetation Management System



## Features

- Digital Database of Railway Vegetation
- Analysis of 3D Point Cloud Data
- Actionable Insights on Vegetation Intrusion
- Export of Maintenance Reports

### Intrusion Alert Log

[Export Report](#)

▲ Total no. of intrusion alerts **Alert Zone** 0
▲ Total no. of intrusion alerts **Warning Zone** 3

Alert I.D	Monitoring Zone	Tree Height	Distance from the Tracks	Detection Date	Detection
8177	Warning Zone	16.2	6.69	2023-12-21	21:33:21 <a href="#">View Footage</a> <a href="#">View Report</a>
5956	Warning Zone	14.9	6.64	2023-11-07	18:50:07 <a href="#">View Footage</a> <a href="#">View Report</a>
5005	Warning Zone	14.7	6.83	2023-10-27	21:41:07 <a href="#">View Footage</a> <a href="#">View Report</a>

Total 3 Items < 1 > 10 / page

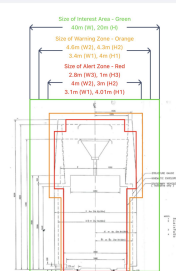
### Configurable KE of the train

Thresholds (T) History

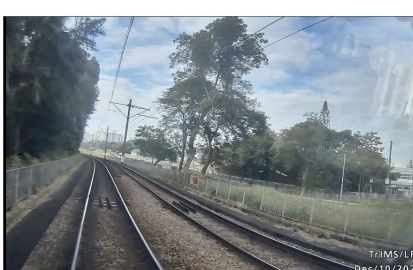
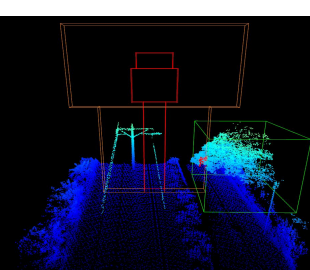
**Alert Area**  
 \* Width: 40 m  
 \* Height: 30 m

**Warning Zone**  
 \* Width 1: 3.6 m  
 \* Width 2: 4.6 m  
 \* Height 1: 3 m  
 \* Height 2: 4.5 m

**Zone**  
 \* Width 1: 3.1 m  
 \* Width 2: 4 m  
 \* Width 3: 2.8 m  
 \* Height 1: 4.01 m  
 \* Height 2: 3 m  
 \* Height 3: 1 m



### Video Footages

- Configurable KE of the train
- Export of .pdf and .csv reports
- Integration with maintenance scheduling software

“Kodify’s vegetation management system helps us inspect more than 25,000 trees across our Light Rail Network.”

