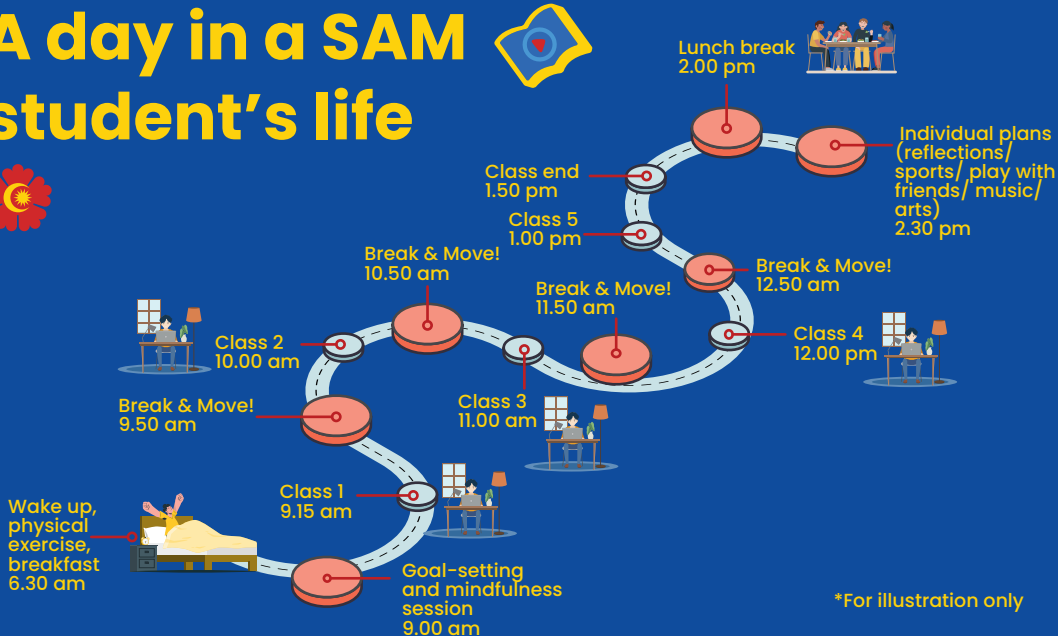
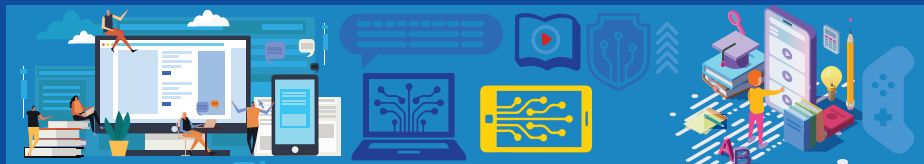


A day in a SAM student's life



*For illustration only



🕒	Monday	Tuesday	Wednesday	Thursday	Friday
9.00 am	Goal setting and mindfulness session				
9.15 am	BM	Agama/Moral	BM	Agama/Moral	History
	10 minutes break and move around				
10.00 am	History	BM	History	BM	Agama/Moral
	10 minutes break and move around				
11.00 am	Maths	Sc	Sc	Maths	Maths
	10 minutes break and move around				
12.00 pm	Eng	Maths	Sc	Sc	Eng
	10 minutes break and move around				
1.00 pm	Eng	Sc	Eng	Eng	Maths
1.50 pm	Class End				
2.00 pm	Lunch Break				
2.30 pm	** Individual plans (reflections/ sports/ play with friends/ music/ arts)				

*This timetable is subject to change
 ** Activities will be changed every semester

