

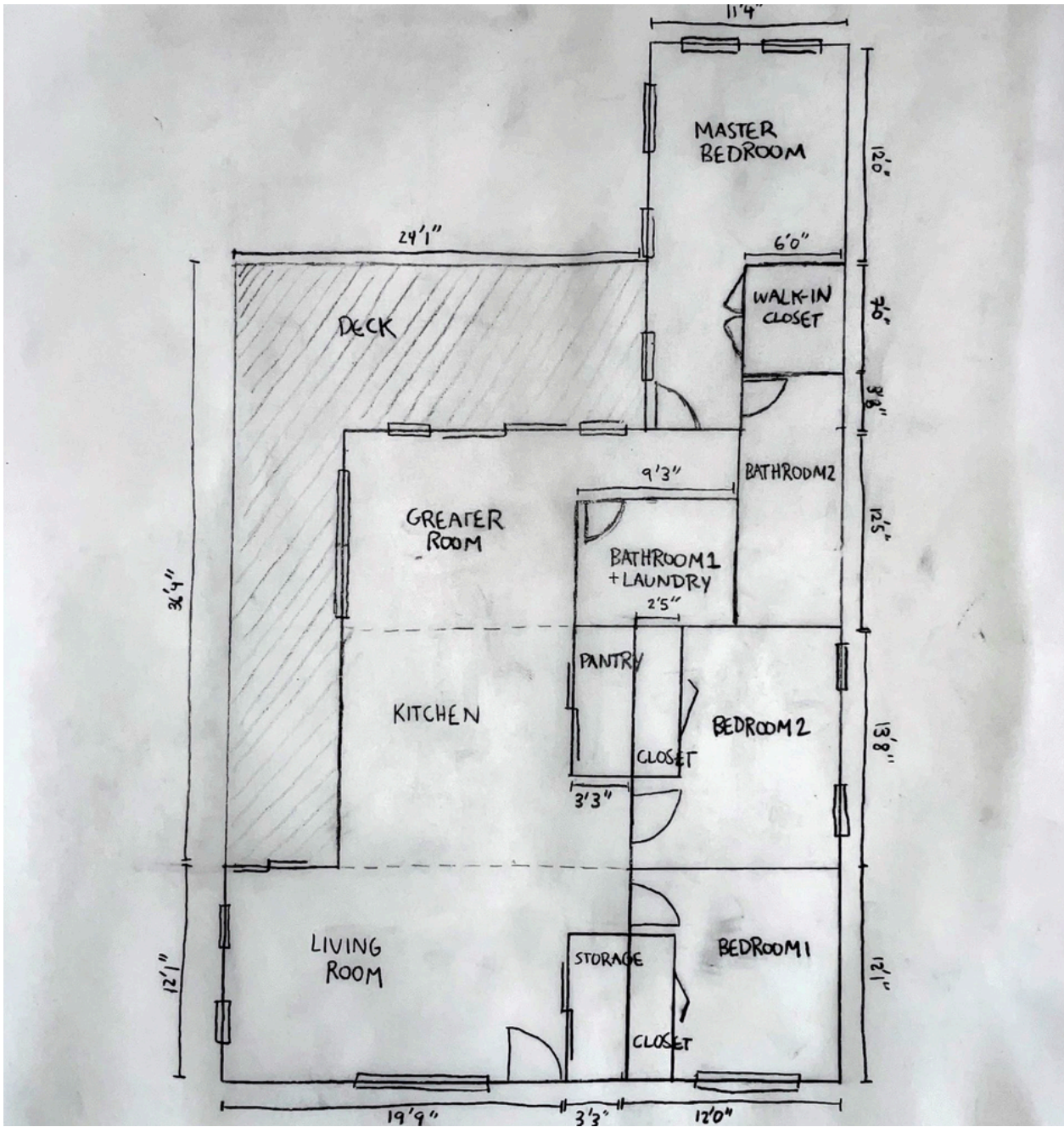
STAFFORD



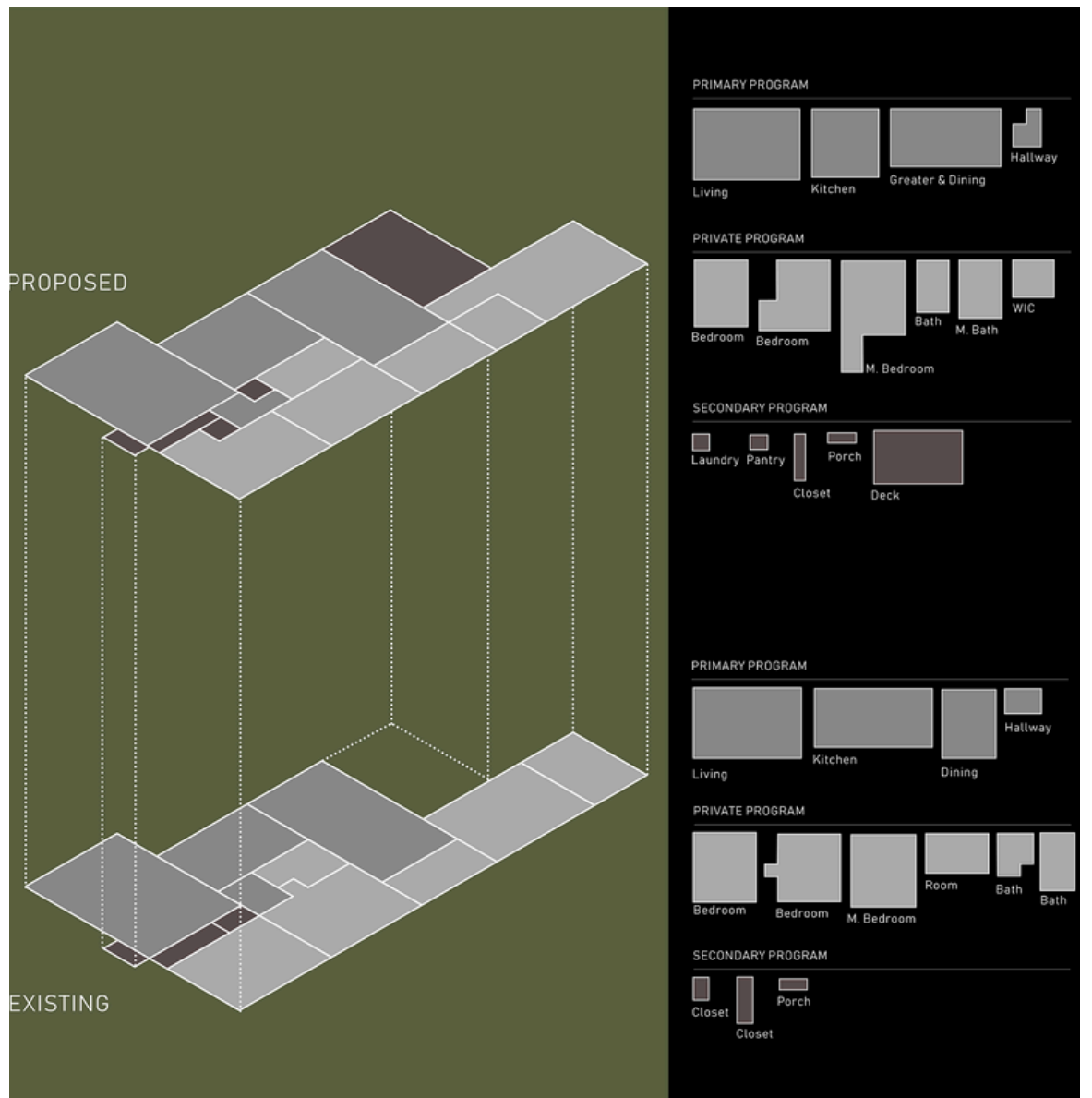
PROJECT OVERVIEW

In-Depth Architectural Review Text The Stafford Street remodel exemplifies how careful design can renew the functionality and spatial quality of a mid-century home.

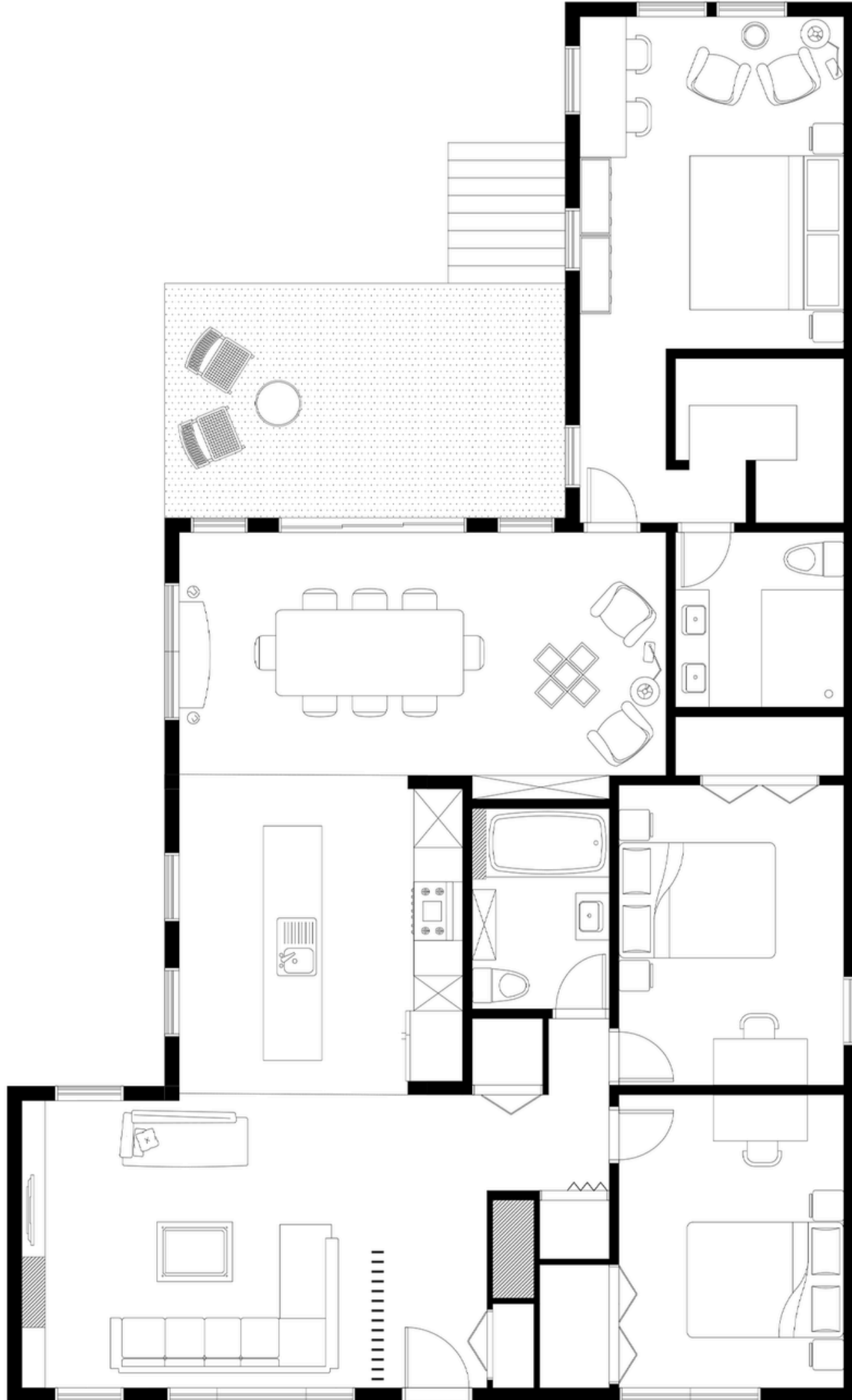
PLAN DISTRIBUTION & SKETCHING



The original ranch plan was compact and segmented; our redesign reconfigures it into a flowing, open-concept layout anchored by a galley kitchen.



PLAN DESIGN



KITCHEN

The kitchen serves as both passage and programmatic heart, bridging the public front areas (entry, dining, and living) with the more private great room at the rear.



ORGANIZATION



This organization allows for clear circulation while preserving defined zones. Strategic window placement maximizes daylight, and modern finishes unify the space without erasing its original identity.

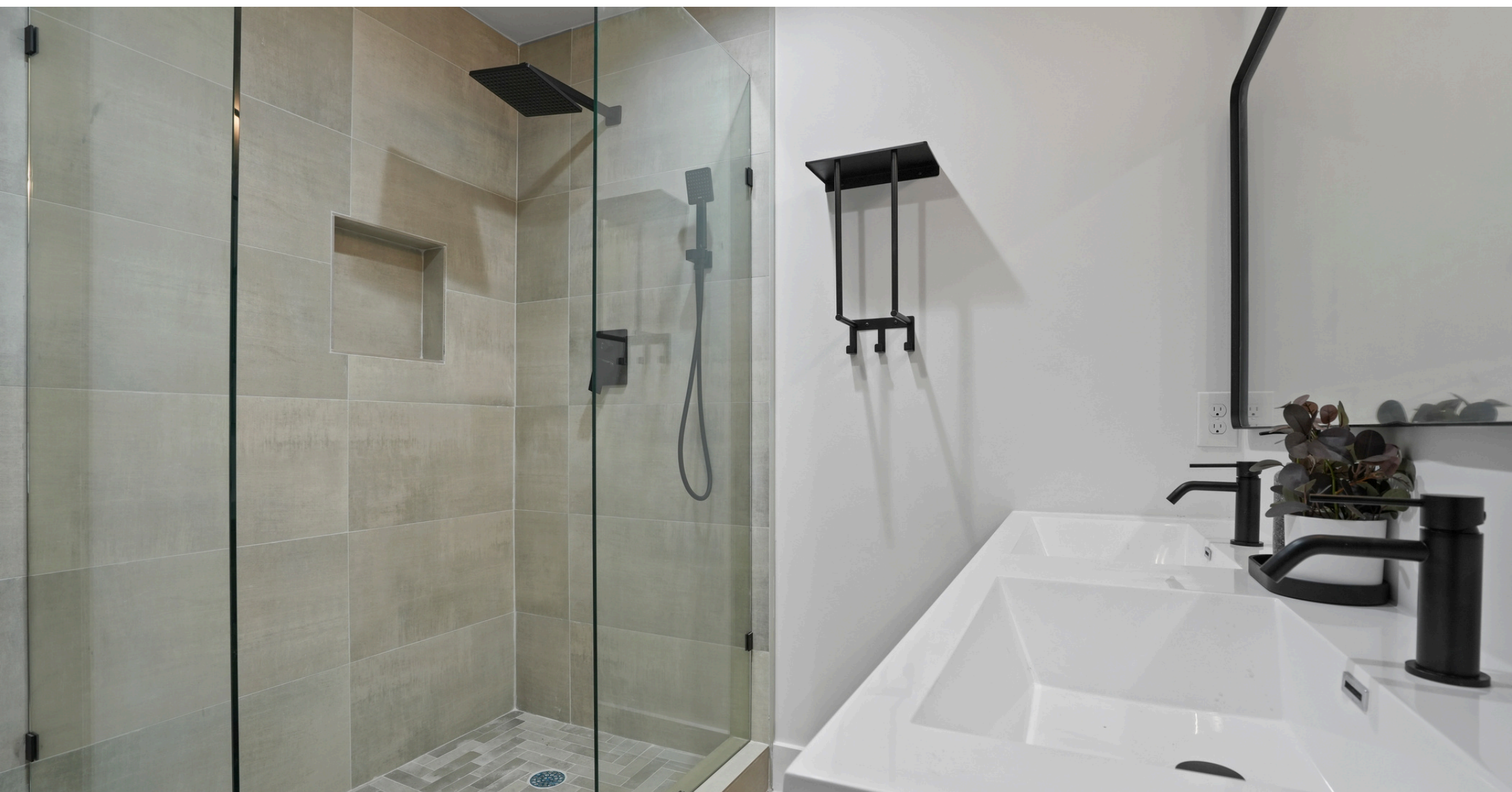


LIVING ROOM

The vaulted ceiling enhances the spatial quality of the main areas, drawing the eye upward and contributing to a sense of expansion within the footprint.



MASTER BEDROOM



FACADES

Outside, material updates maintain the home's character while clearly signaling its transformation.



CONCLUSION



The result is a home both grounded in its history and redefined for contemporary living.