

YPERIA

Homes are more than structures—they're spaces for lasting memories.

PROJECT ELEVEN

BROCHURE



LAMIAS
37

The project is situated in a quiet, sparsely populated area in Glyfada. The building spans six floors, offering two maisonettes and seven apartments. The ground-floor maisonette has the option for exclusive use of a swimming pool. Each apartment is equipped with underfloor heating and a VRV air-conditioning system.

High-quality wood flooring will be used in the living rooms, kitchens, and bedrooms, while European tiles will be installed in the bathrooms. The bathrooms will feature high-quality, European-made tiles in various dimensions, with premium sanitary ware brands such as Grohe and Ideal Standard.





LAMAS
37



Basic Characteristics



Energy Efficiency A++



Autonomous Heating System

Underfloor Heating / VRV – Air-condition System



Photovoltaic Panels on the Rooftop



Sockets for Charging

Electrical Cars



Delivery Date 31-09-2026

BOARD



Unit Number

Level

Internal Area

Balconies

Bedrooms

Bathrooms

Parking

Storage

Price

MAIS

0 & 1

131,70m²Exclusive Use of
Garden Area
(162m²) & balconies
(14,90m²)

4

2



AVAILABLE

APT A1

1

57,25m²28,30m²

2

1



SOLD

APT B1

2

57,30 m²20,20m²

2

1



SOLD

Mais 2

2 & 3

140,40m²56,6m²

4

2



AVAILABLE

APT C1

3

57,30 m²17,80m²

2

1



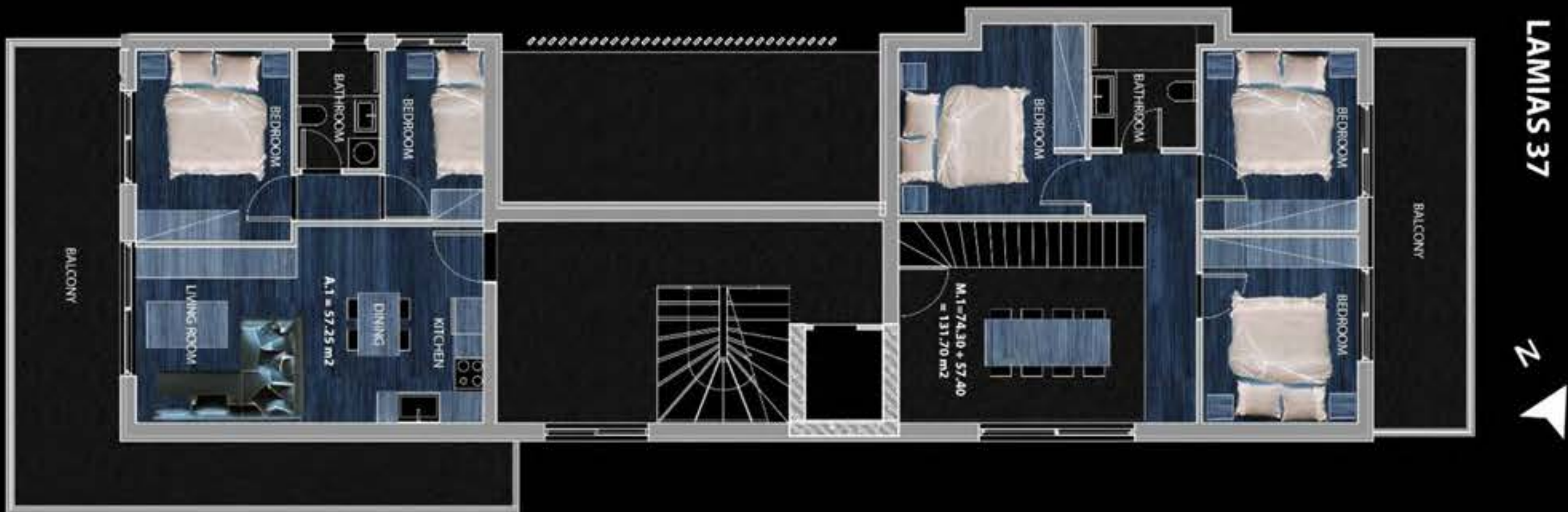
SOLD

								
Unit Number	Level	Internal Area	Balconies	Bedrooms	Bathrooms	Parking	Storage	Price
Apt D1	4	82,35m ²	28,30m ²	2	2	✓	✓	AVAILABLE
APT D2	4	78,90m ²	17.8m ²	2	2	✓	✓	AVAILABLE
APT E1	5	82,35 m ²	28.3m ²	2	2	✓	✓	SOLD
Apt E2	5	78,90m ²	17.8m ²	2	2	✓	✓	AVAILABLE
APT ST	6	28 m ²	Exclusive Use of Garden Area (50.6m ²)	1	1	✓	✓	SOLD

FLOOR PLANS

MAISONNETTE 1

YPERIA



INTERNAL AREA

74,30 + 57,30 = 131,70m2



BALCONIES

Exclusive Use of Garden (162m2) & balconies (14,9m2)



LEVEL

0 & 1



BEDROOMS

4



WC

2



PARKING

YES



STORAGE

YES

LAMIAS 37



YPERIA

APT A



LAMIAS STR 1ST FLOOR



INTERNAL AREA

57,25m²



BALCONIES

28,3m²



LEVEL

1



BEDROOMS

2



WC

1



PARKING

YES



STORAGE

YES

LAMIAS 37

LAMIAS_{STR} 2ND FLOOR

APT B

**INTERNAL AREA**57,3m²**BALCONIES**20,2 m²**LEVEL**

2

**BEDROOMS**

2

**WC**

1

**PARKING**

YES

**STORAGE**

YES

LAMIAS 37



YPERIA

APT B



LAMIAS STR 3RD FLOOR



INTERNAL AREA

57,3m²



BALCONIES

20,2m²



LEVEL

3



BEDROOMS

2



WC

1



PARKING

YES



STORAGE

YES

MAISONNETTE 2

YPERIA

SEA VIEW



LAMIAS 37



LAMIAS str.
2nd FLOOR



LAMIAS 37



LAMIAS str.
3rd FLOOR



INTERNAL AREA

79,40 + 61 = 140,4,m2



BALCONIES

(56,6m2)



LEVEL

2 & 3



BEDROOMS

4



WC

2



PARKING

YES



STORAGE

YES

APT D1

SEA VIEW

**INTERNAL AREA**82,35 m²**BALCONIES**28,3m²**LEVEL**

4

**BEDROOMS**

2

**WC**

2

**PARKING**

YES

**STORAGE**

YES

APT D2

MOUNTAIN VIEW



INTERNAL AREA

78,90 m²



BALCONIES

17,8m²



LEVEL

4



BEDROOMS

2



WC

2



PARKING

YES



STORAGE

YES

APT E1

SEA VIEW



INTERNAL AREA

82,35 m2



BALCONIES

28,3m2



LEVEL

5



BEDROOMS

2



WC

2



PARKING

YES



STORAGE

YES

APT E2

MOUNTAIN VIEW

**INTERNAL AREA**78,90 m²**BALCONIES**17,8m²**LEVEL**

5

**BEDROOMS**

2

**WC**

2

**PARKING**

YES

**STORAGE**

YES

INTERIORS
MAISONNETTE













INTERIORS
APARTMENTS









INTERIORS
APARTMENTS
Apt 4.1 & Apt 4.2









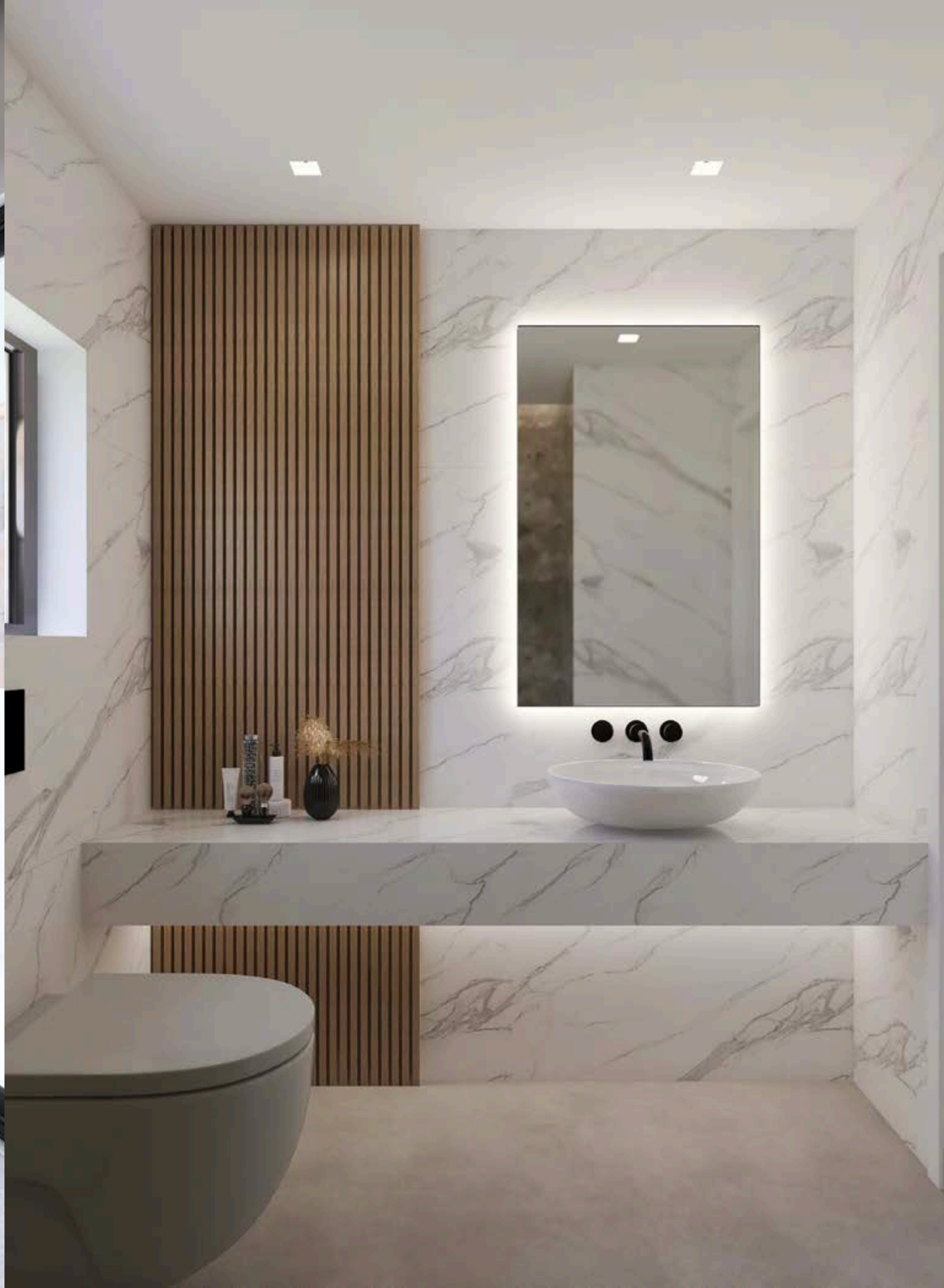












LOCATION



91, GR - Izmir, TR

Piraeus, GR - Izmir, TR

Kalamaki Beach

Argyroupoli

Ag. Georgios

Koropi

The Ellinikon Experience Park

Elliniko

Lamias

Viomichaniki Periochi

91

Glyfada Γλυφάδα

Glyfada Beach

Kalivia

PANORAMA ΠΑΝΟΡΑΜΑ

ΑΝΩ ΒΟΥΛΑ ΑΝΩ ΒΟΥΛΑ

ΣΚΑΡΠΙΖΑ ΣΚΑΡΠΙΖΑ

Kitsi

Prari

Voula Beach

91

Voula

ΡΙΓΑΔΑΚΙΑ ΠΗΓΑΔΑΚΙΑ

Vari

Vouliagmeni

Ag. Marina

ΒΑΡΚΙΖΑ ΒΑΡΚΙΖΑ

Paralia Varkiza

91

Vouliagmeni Beach

ΓΑΛΑΖΙΑ ΑΚΤΗ

ΛΕΜΟΣ ΛΑΙΜΟΣ

Althea Beach

Ag. Dimitrios

Sofronis

91



CONTACT

Contact Person: George Pytharas

Telephone Number: + (30) 6970095151

Address: Pindarou 15, Kolonaki, Athens