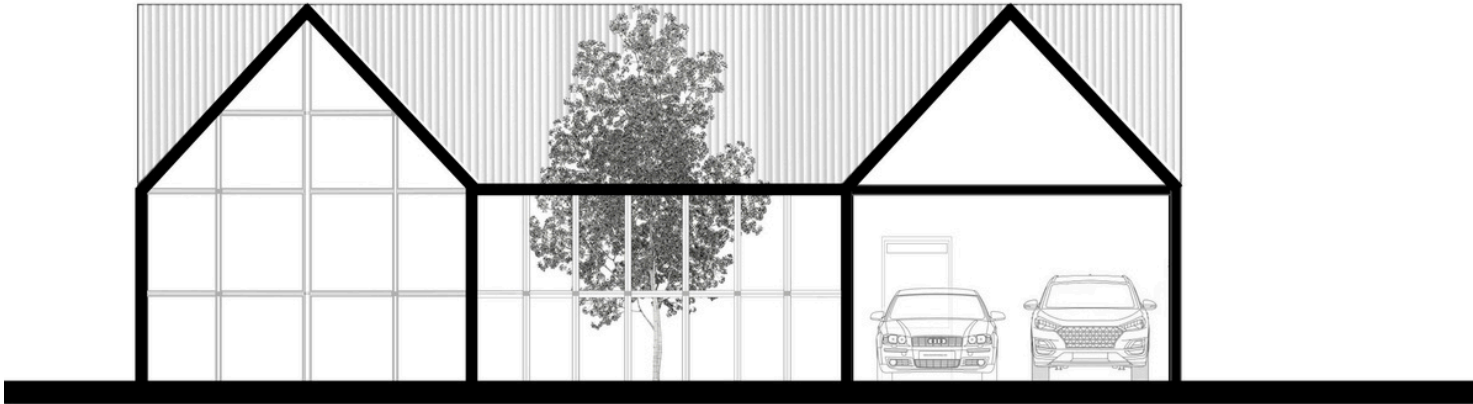
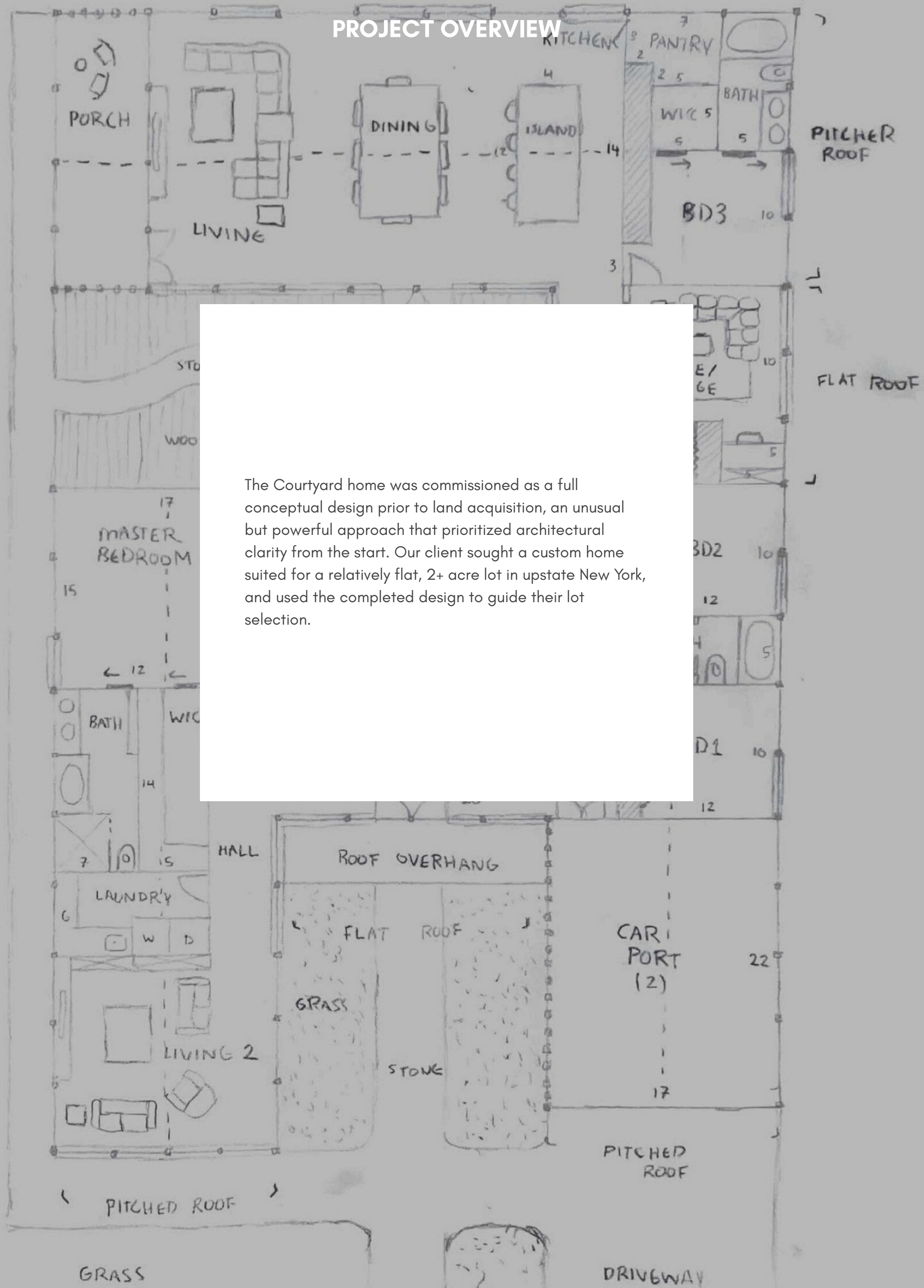


COURTYARD HOUSE



PROJECT OVERVIEW



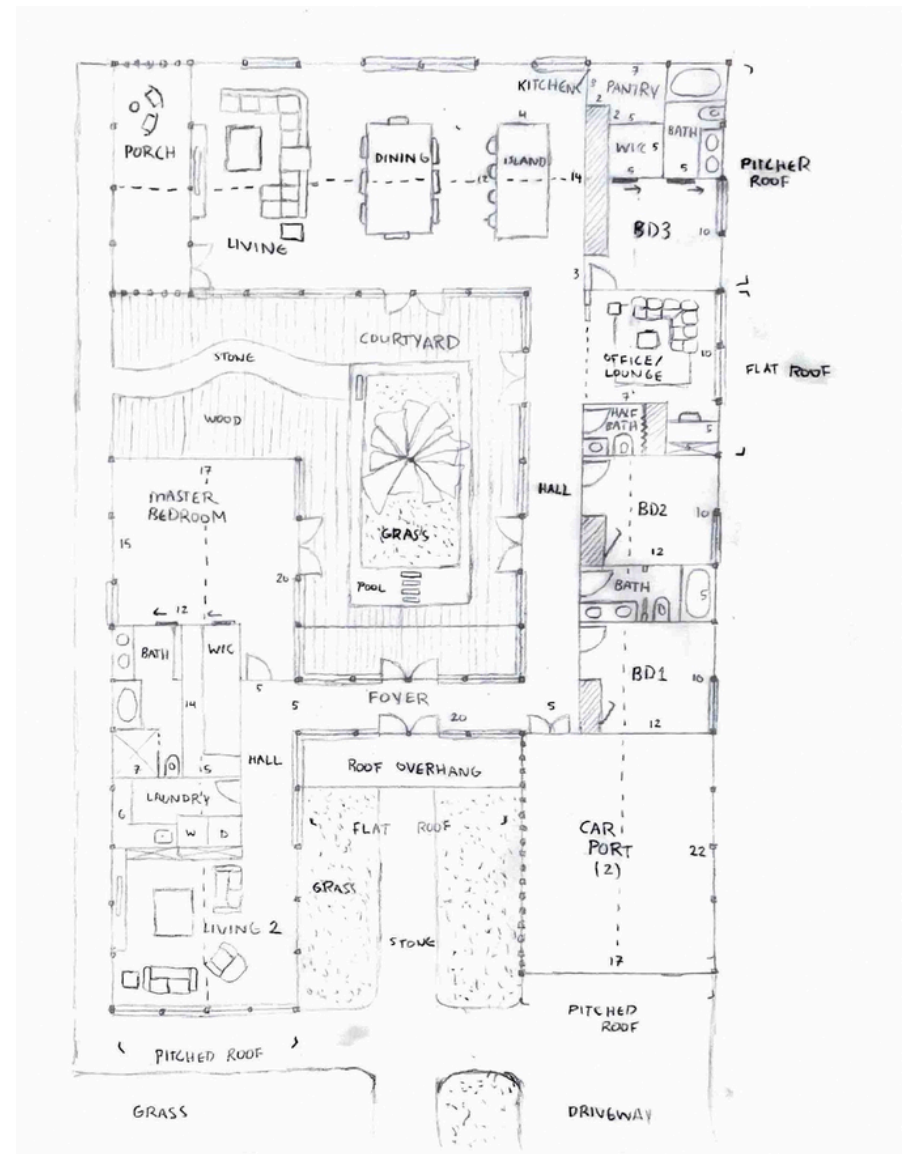
The Courtyard home was commissioned as a full conceptual design prior to land acquisition, an unusual but powerful approach that prioritized architectural clarity from the start. Our client sought a custom home suited for a relatively flat, 2+ acre lot in upstate New York, and used the completed design to guide their lot selection.

DESIGN STRATEGY

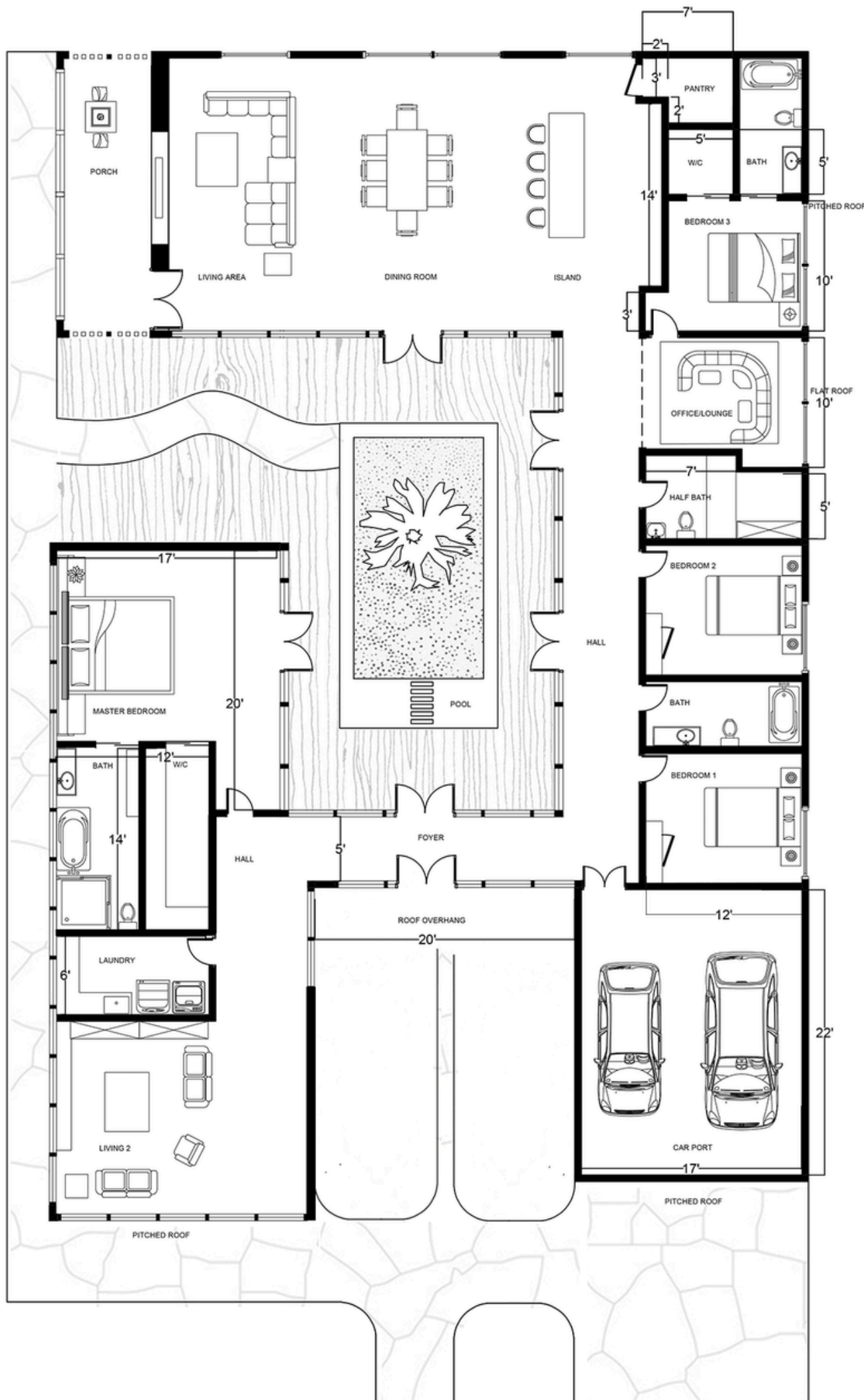
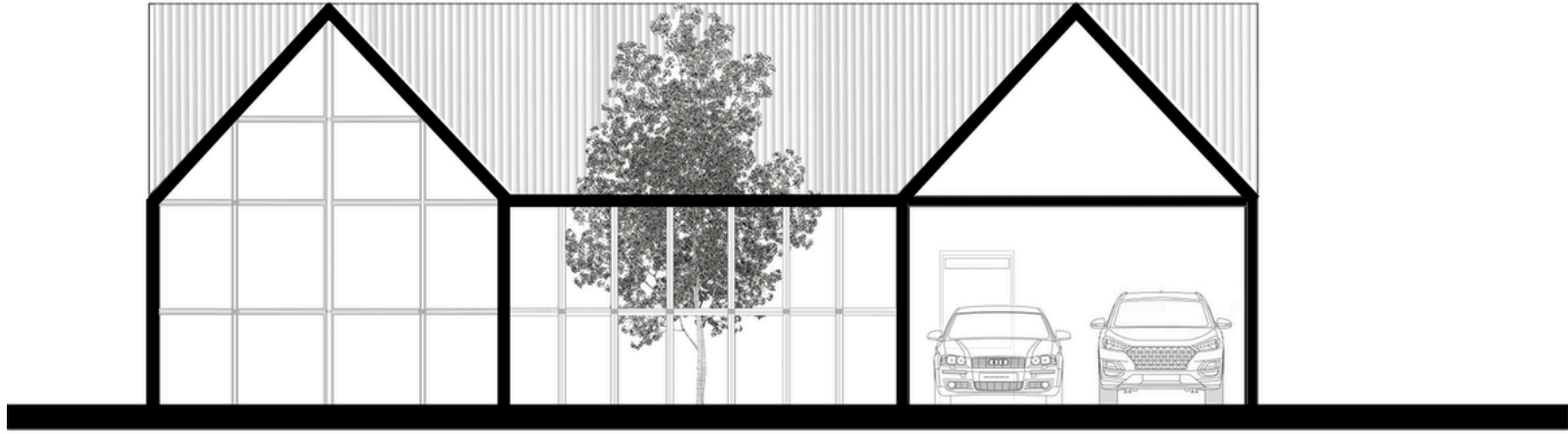


The home is structured around a central courtyard, forming both a spatial and functional core. This courtyard defines circulation, brings light into deeper areas, and provides a series of outdoor rooms that enhance the experience of each zone of the house.

The layout balances openness with intimacy—public areas like the living room and kitchen open fully to the courtyard, while private zones like bedrooms maintain selective visual connection.



FLOOR PLAN AND ELEVATION




MATERIALS



Materiality supports the architectural intent: fluted wood cladding and natural stone connect the structure to its landscape and reinforce a restrained palette of textures.



CONCLUSION

An aerial architectural rendering of a modern, single-story house with a dark grey metal roof and light-colored wood siding. The house features a central courtyard with a paved area and a white car parked in the driveway. The surrounding landscape includes green grass, trees, and a stone wall.

With the conceptual phase complete, construction documentation can now proceed with precision, and the design is flexible enough to adapt to multiple sites without compromising intent.

This process illustrates how concept-driven design can lead the development process, rather than follow it.