

PROJECT NAME: Sharon House | **ADDRESS:** 1331 Sharon St NW, Atlanta CA | **SQUARE FOOTAGE:** 1,450 sqft
PROJECT TYPE: Residential - Single Family - Completed (2022)

SHARON HOUSE



PROJECT NAME: Sharon House

| ADDRESS: 1331 Sharon St NW, Atlanta GA

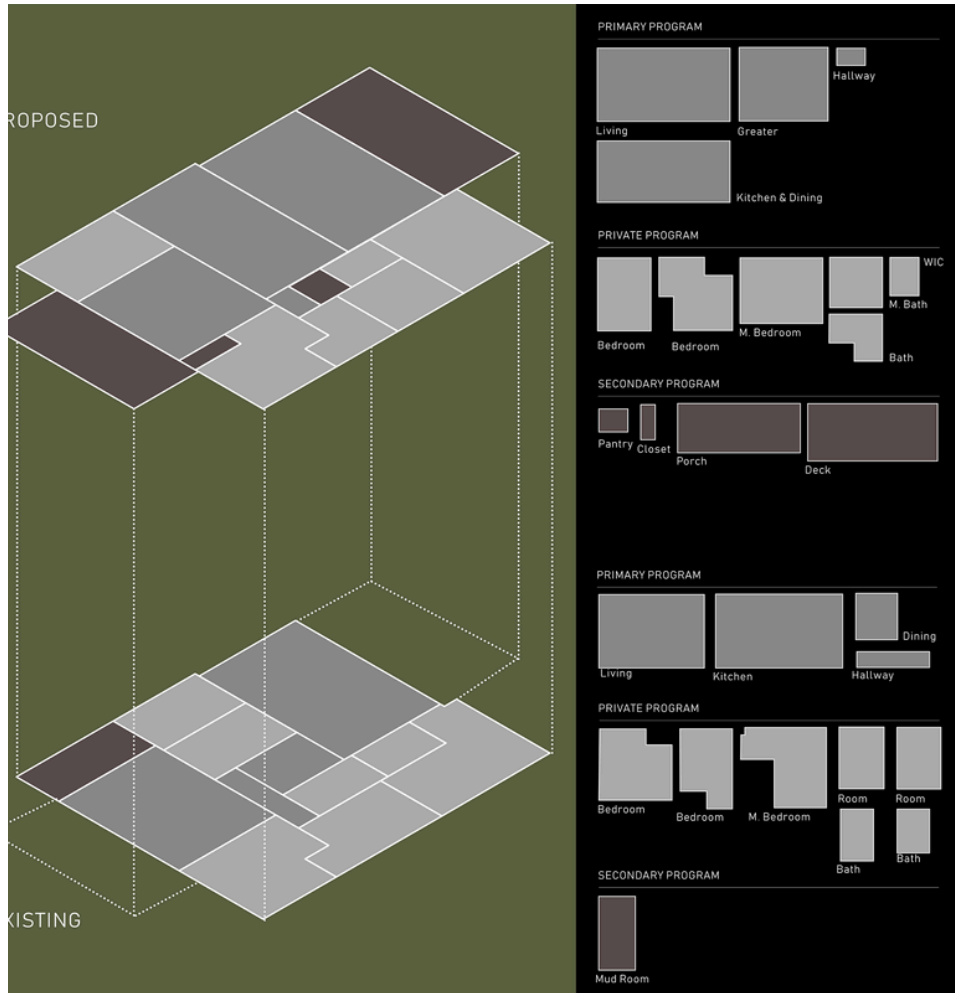
| SQUARE FOOTAGE: 1,450 sqft

| PROJECT TYPE: Residential - Single Family - Completed (2022)

PROJECT OVERVIEW

The Sharon House project represents a full renovation and expansion of a mid-century ranch home into a refined, minimalist residence.

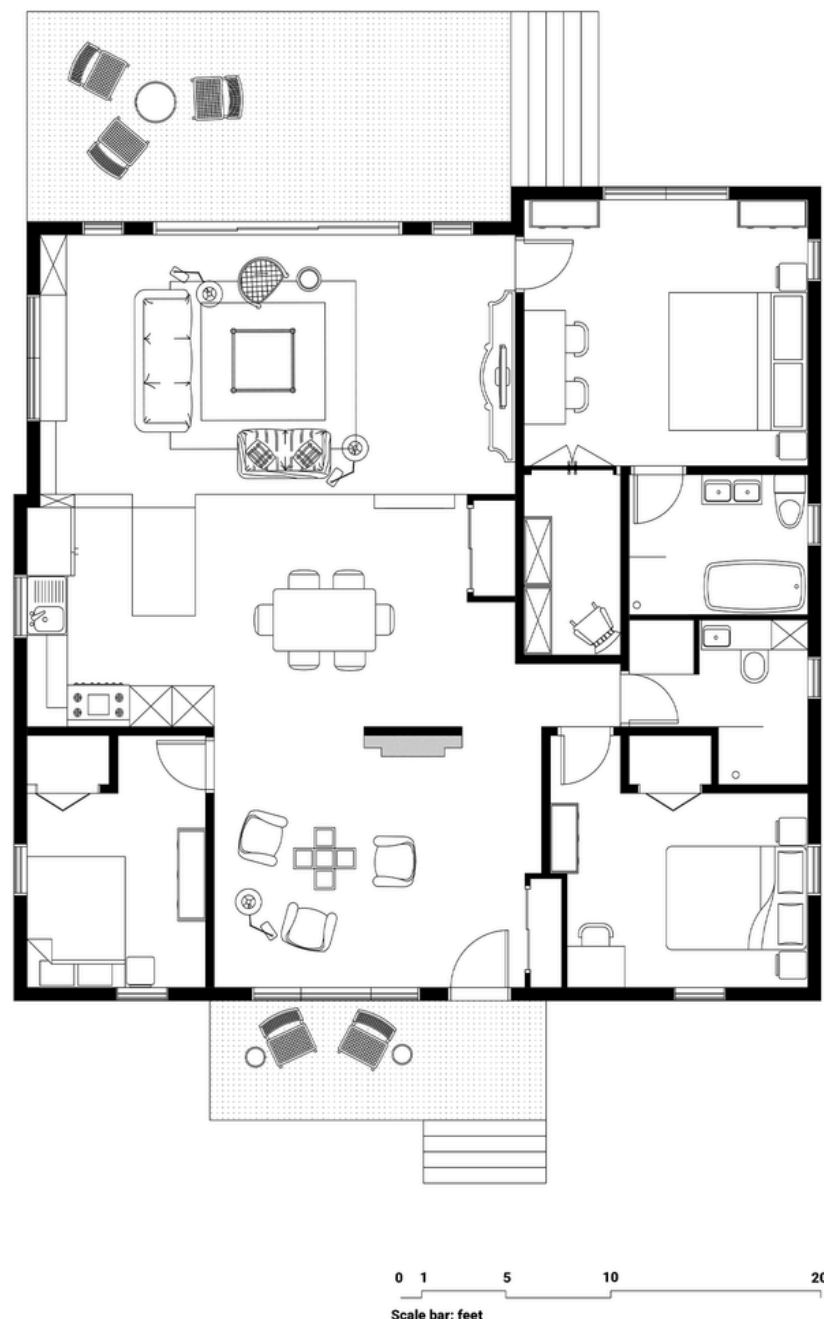
PROGRAM & LAYOUT



The original floor plan was segmented and constrained, with isolated rooms that limited natural light and spatial cohesion. The new layout removes internal walls to form an open-plan environment anchored by a central fireplace and defined by level transitions.

PROPOSED VS EXISTING LAYOUT

Axonometric comparison highlighting the reorganization of the floor plan, where interior partitions are removed to create an open-plan living space anchored by a central fireplace.



FLOOR PLAN
Redesigned layout illustrating spatial hierarchy and improved flow, with the master suite set apart for privacy and direct access to the outdoor deck.

PROJECT NAME: Sharon House

| ADDRESS: 1331 Sharon St NW, Atlanta CA

| SQUARE FOOTAGE: 1,450 sqft

| PROJECT TYPE: Residential - Single Family - Completed (2022)

OPEN-PLAN LIVING



Upon entry, the reimagined foyer opens into a generous great room, where the fireplace provides both visual warmth and spatial delineation. The main living area transitions into a split-level living room, establishing spatial hierarchy while maintaining openness. Frameless doors and a monochromatic interior palette provide continuity and minimal visual noise.



PROJECT NAME: Sharon House

| ADDRESS: 1331 Sharon St NW, Atlanta CA

| SQUARE FOOTAGE: 1,450 sqft

| PROJECT TYPE: Residential - Single Family - Completed (2022)

PRIVATE QUARTERS



Three bedrooms are distributed for privacy, with the master suite positioned at the rear, separated by a few steps and featuring its own bath and walk-in closet. Sliding doors lead to a large deck that visually and functionally extends the living space outdoors.



PROJECT NAME: Sharon House

| ADDRESS: 1331 Sharon St NW, Atlanta GA

| SQUARE FOOTAGE: 1,450 sqft

| PROJECT TYPE: Residential - Single Family - Completed (2022)

KITCHEN



PROJECT NAME: Sharon House

| ADDRESS: 1331 Sharon St NW, Atlanta GA

| SQUARE FOOTAGE: 1,450 sqft

| PROJECT TYPE: Residential - Single Family - Completed (2022)

EXTERIOR VIEWS




Externally, subtle architectural gestures like the preserved joists and enlarged casement window create a dialogue with the streetscape. The project balances minimalism with comfort, turning a standard bungalow into a bespoke contemporary home that prioritizes light, flexibility, and flow.



PROJECT NAME: Sharon House | **ADDRESS:** 1331 Sharon St NW, Atlanta GA | **SQUARE FOOTAGE:** 1,450 sqft
PROJECT TYPE: Residential - Single Family - Completed (2022)

CONCLUSION



Sharon House exemplifies how thoughtful spatial reorganization can unlock a structure's latent potential, achieving both market value and design clarity.