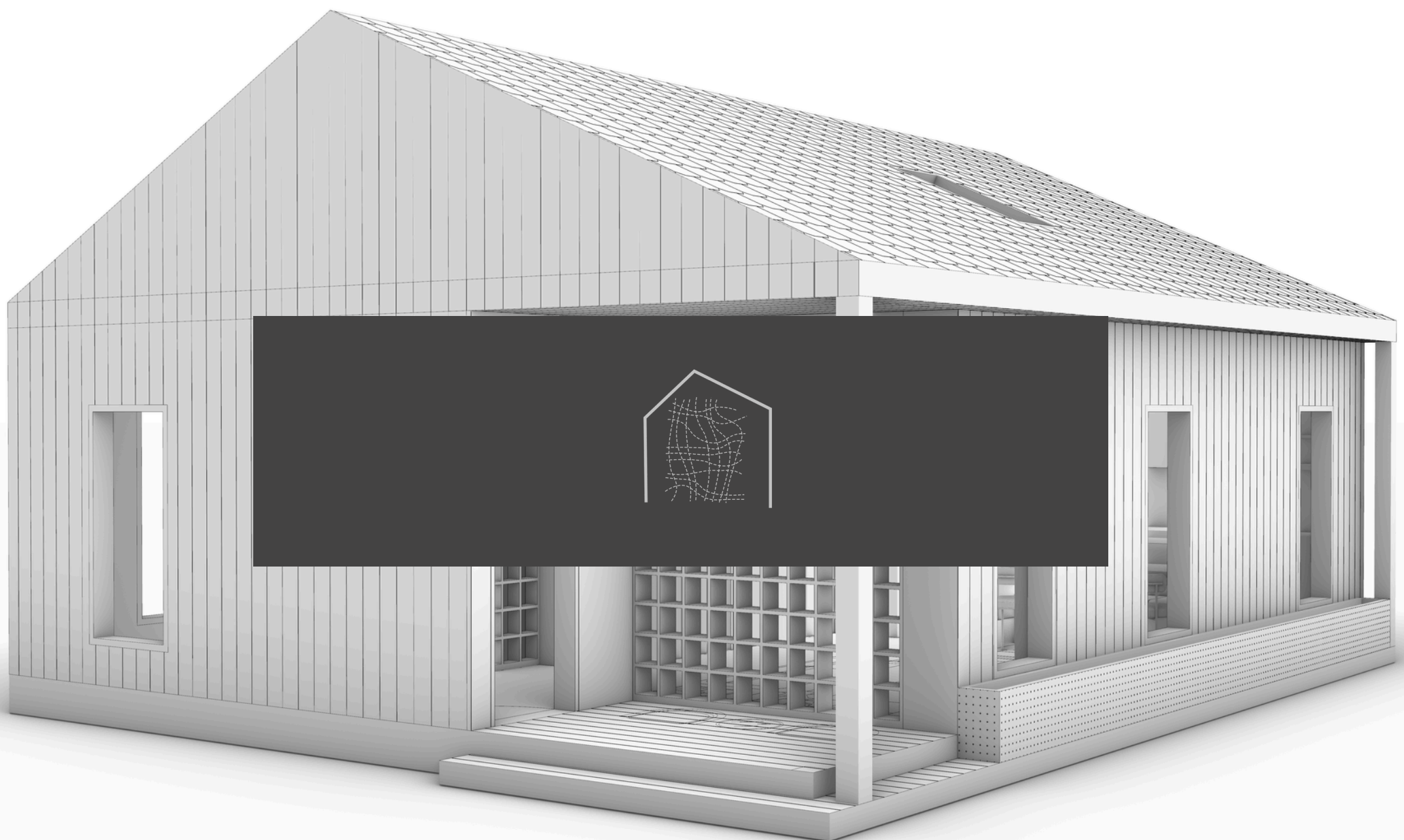


KIRKWOOD ADU



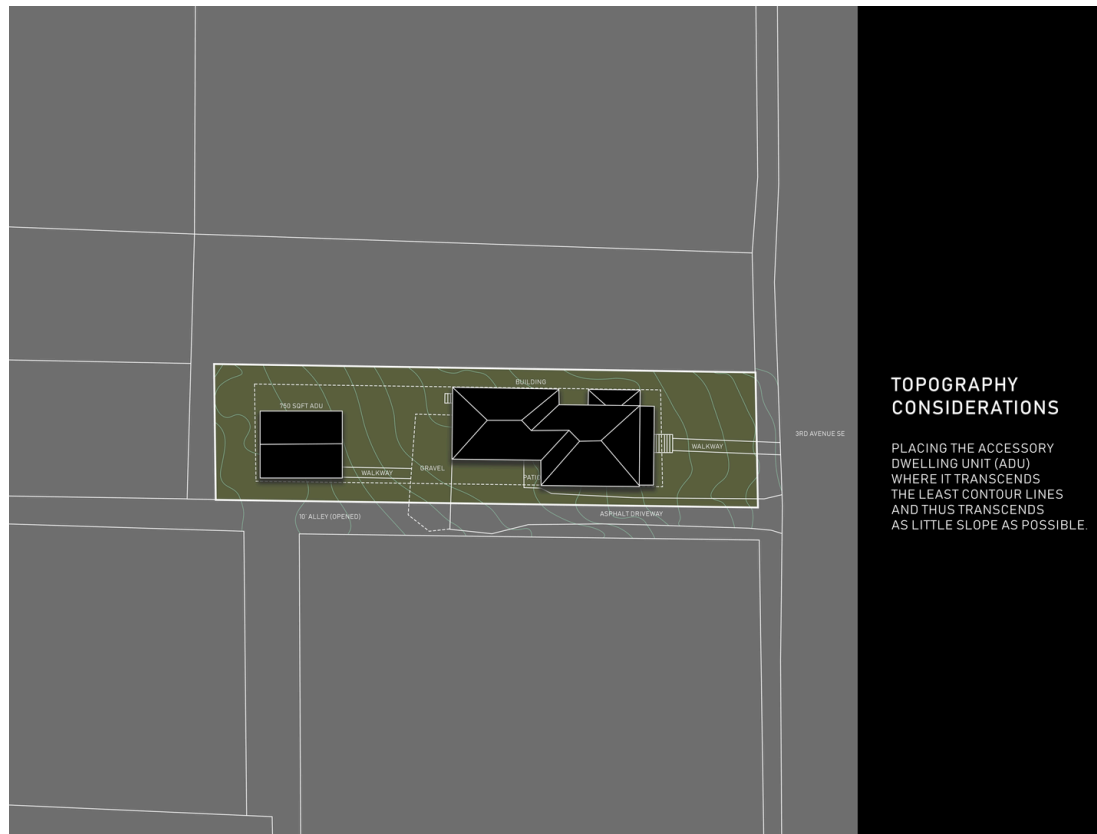
Kirkwood ADU is a distilled exploration of compact, high-performance design. Formally, it takes the shape of a simple square volume with a carved-out porch. Yet within this modest form lies a richly considered layout that offers spatial generosity and layered light.



EXISTING VS PROPOSED



SITE AND ORIENTATION



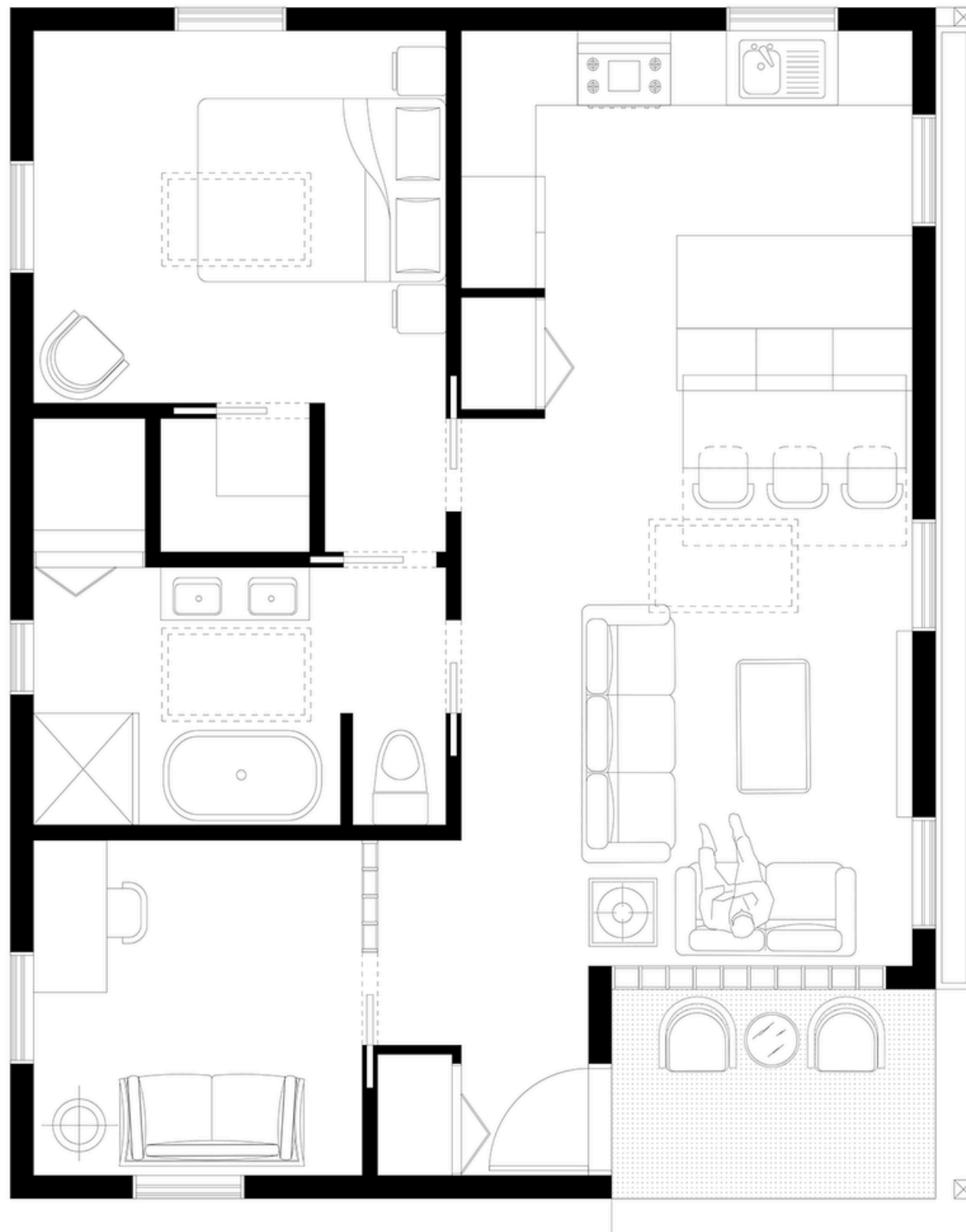
PLAN AND PUBLIC ZONES

Public zones (kitchen, dining, and living) occupy one side of the plan, unified through vaulted ceilings, large-format windows, and an open kitchen design. Custom cabinetry and warm, minimalist finishes reinforce the Scandinavian inspiration. A banquette dining setup seamlessly extends from the kitchen island, maximizing space and providing a social focal point.

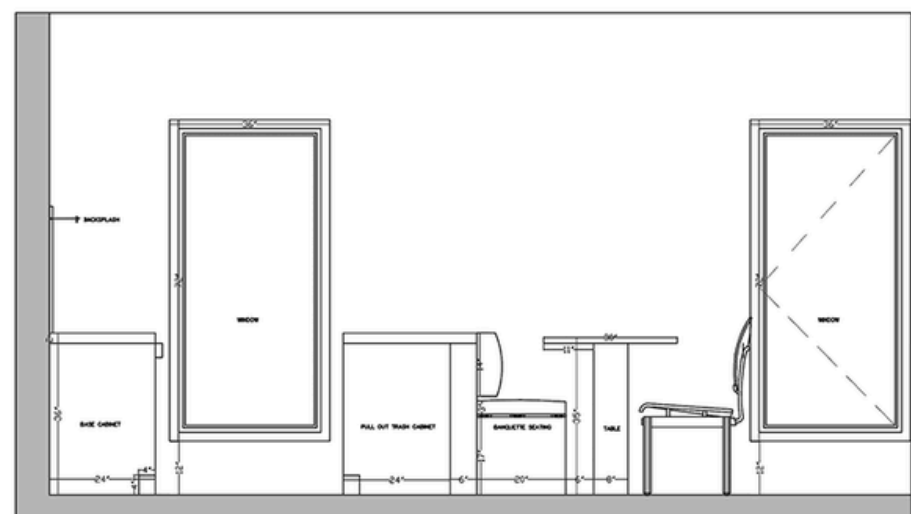
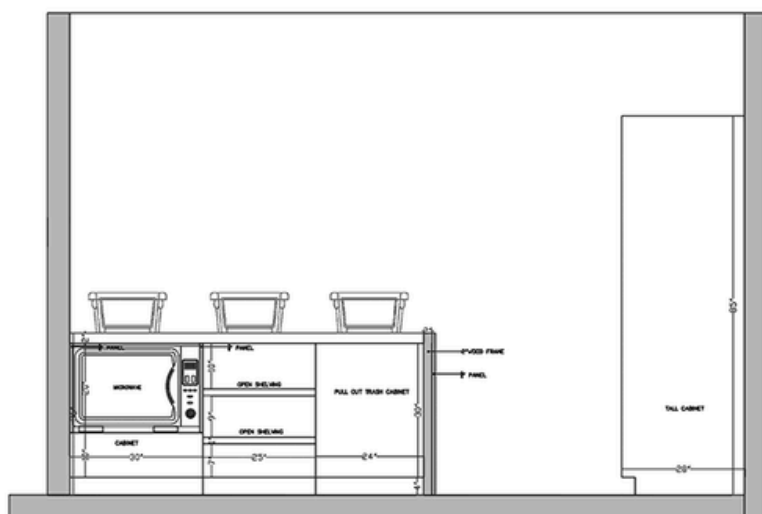
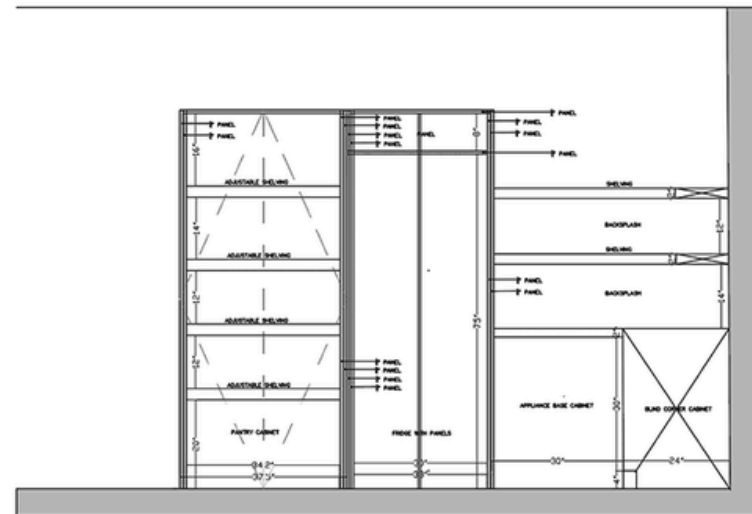
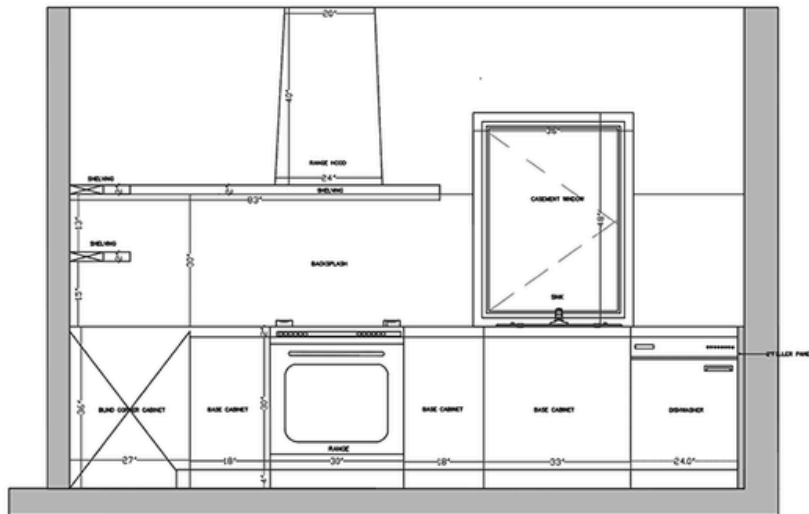
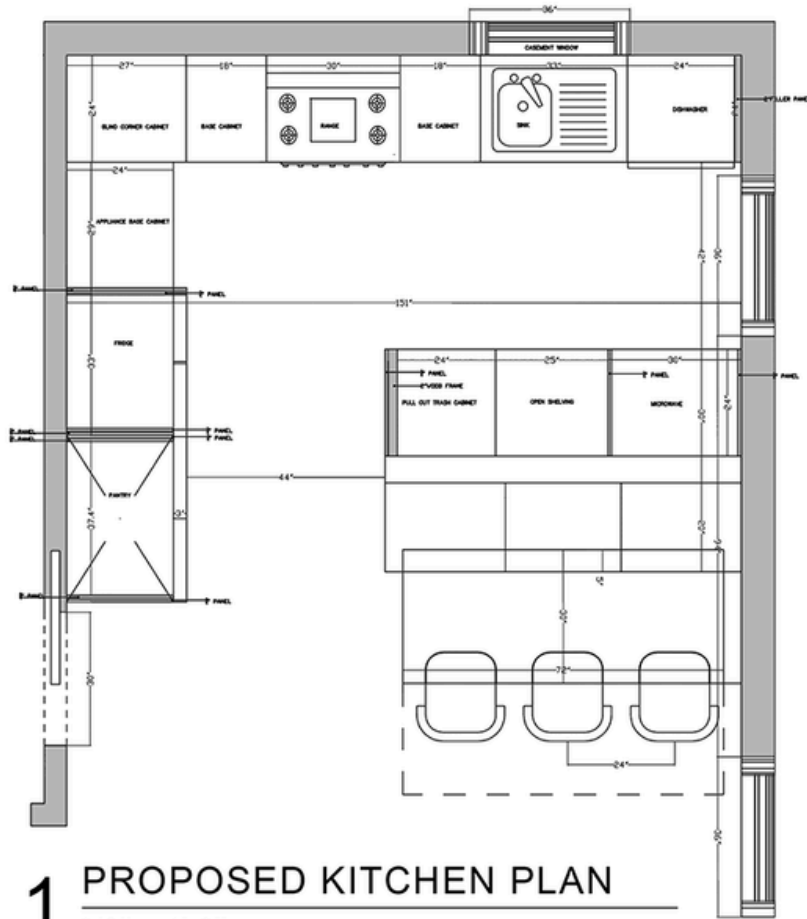
The other side of the plan contains a dedicated den/office space, a spacious jack-and-jill bathroom with laundry, and a vaulted master bedroom with its own walk-in closet and skylight. Additional skylights are strategically placed - one in the bathroom and one in the living room - bringing natural light into the center of the unit.

Un rasgo distintivo de este ADU son dos muros de bloques de vidrio, que difunden la luz del día manteniendo la privacidad, añadiendo una textura visual y material única al espacio.

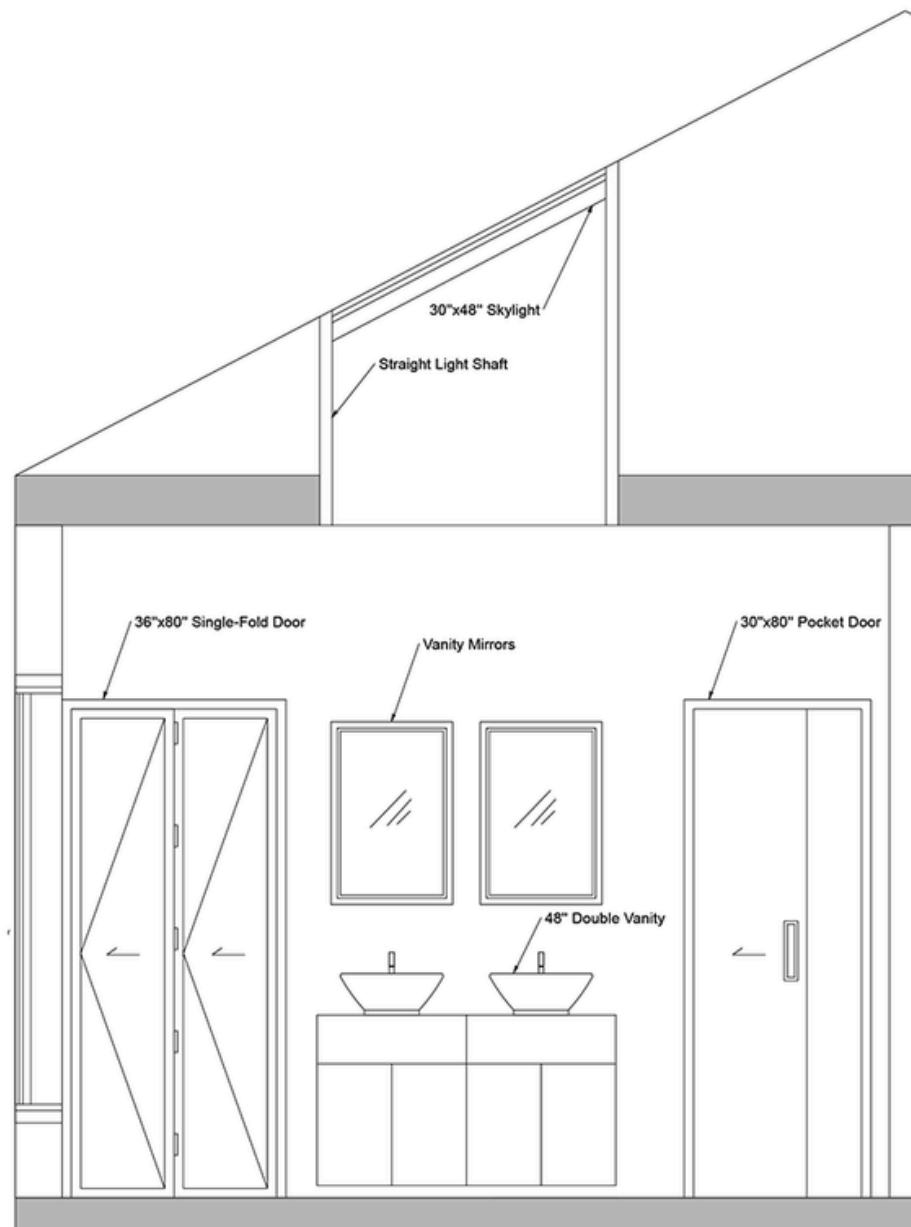
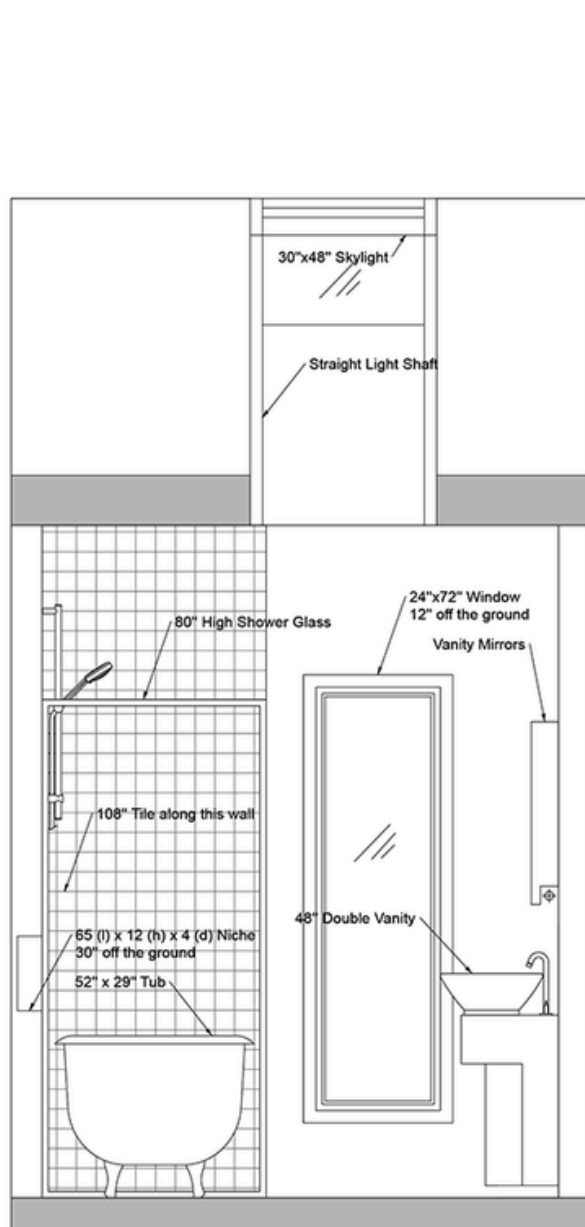
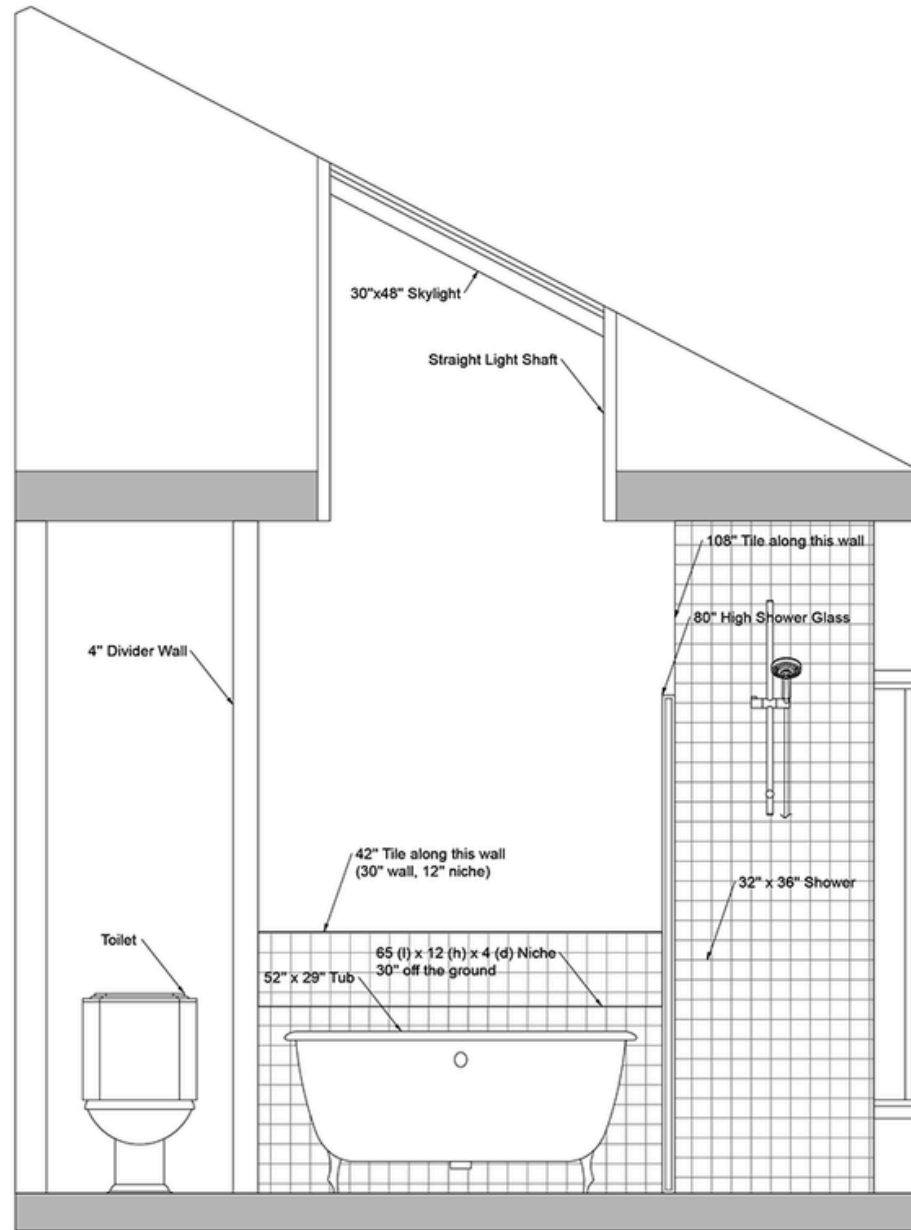
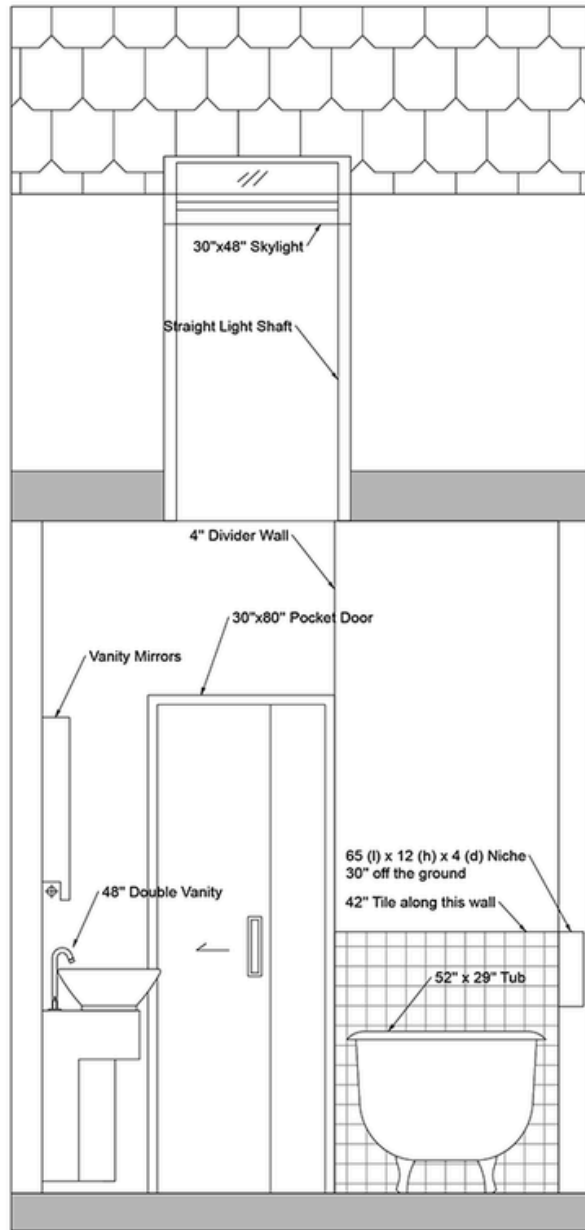
KIRKWOOD
FURNISHED CAD



CONSTRUCTION DETAILS



CONSTRUCTION DETAILS




FACADES



The exterior reads as a restrained yet expressive form: vertical wood siding, crisp detailing, and an asymmetrical roof line lend sculptural clarity. A long, integrated planter filled with vegetation softens the East elevation and connects the home to its natural setting



CONCLUSION



Kirkwood exemplifies what's possible when compact form meets careful planning. It offers a full residential experience—one with layered light, functional complexity, and material richness—within the frame of a small accessory dwelling.