

## Dress Code Guidelines

### 1. Allowed Color Palette.

Attendees are encouraged to wear attire in shades of black, grey, white, and blue; however, certain light colors will also be permitted.

The following color palette will serve as a reference for the allowable colors.



### 2. Forbidden Color Palette

Vibrant and striking colors are strictly forbidden for all delegates, members of the chair, and staff members.

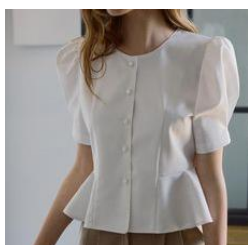


### 3. Tops

All shirts and blouses are allowed, as long as they don't show cleavage, expose too much skin, or are see-through.

Sports apparel, t-shirts, tops with graphic prints, or low-cut blouses are strictly forbidden for all delegates, staff members, advisors, and members of the chair.

The following examples serve as inspiration for appropriate attire during the event:



#### 4. Bottoms

Shorts, khakis, jeans, linen pants, leggings, and sweatpants are not allowed for any participants of the model.

Skirts and dresses are only allowed if they are knee-length or longer.

The following examples serve as inspiration for appropriate attire during the event:



#### 5. Shoes

Formal shoes, heels, flats, or any footwear must align with the allowed color palette previously described.

Sneakers, sandals, sleepers, Crocs, and high heels, as well as footwear that does not completely cover the toes, are not allowed in PPMUN.

The following examples serve as inspiration for appropriate attire during the event:



## 6. Coats and suits

Formal coats and suits that align with the allowed color palette are allowed. Flashy coats with prints or graphic designs are strictly prohibited.

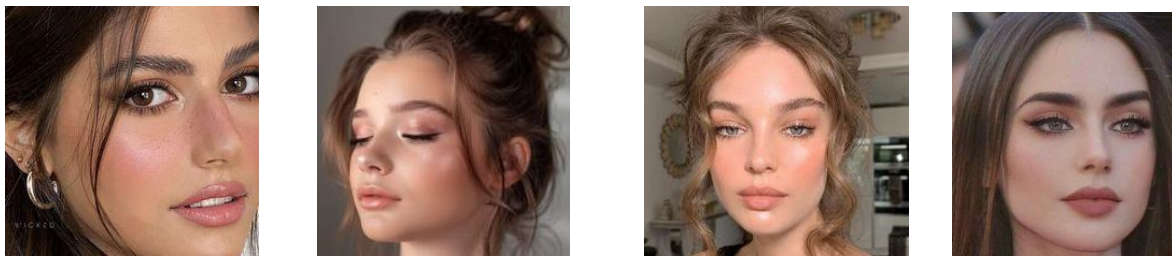
The following examples serve as inspiration for appropriate attire during the event:



## 7. Makeup

Makeup must be kept simple, using light and earthy tones for eyeshadow. Bright colors are not allowed for any delegates, chair, or staff members. Please refrain from using flashy makeup and keep it subtle.

The following makeup examples are inspirations for what is encouraged to be used during the event:



### 8. Accessories

Accessories, such as necklaces, bracelets, rings, belts, ties, bows, etc. must be kept simple and should align with the allowed color palette. Attendees are not allowed to use accessories that are eye-catching or that don't align with the permitted color palette.

The following examples serve as inspiration for appropriate attire during the event:

