



**BIONAMERIS**

**A COMPLETE RANGE OF  
PRODUCTS AND SERVICES FOR  
LARVAL REARING**

BioNaMeris S.A.S.

Address: 797, rue de Canet - Atelier 3 - 62250 MARQUISE – France

Tel.: +33 (0)6.28.51.16.32 - Fax: +33 (0)9.72.61.54.35 - Mail: [contact@bionameris.com](mailto:contact@bionameris.com)

SIRET NUMBER: 910 186 824 000 17 – TVA: FR08910186824





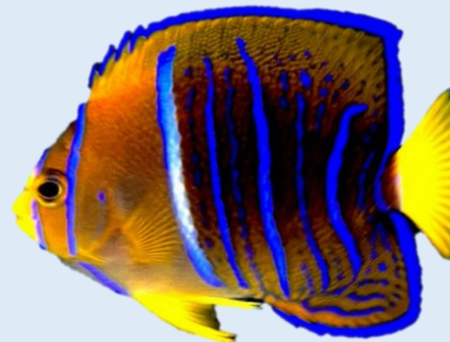
OUR EXPERTISE DEDICATED TO YOUR PROJECT

A PERSONALISED SUPPORT

COMPLEMENTARY PRODUCTS ADAPTED TO YOUR  
NEED

FAST AND SECURE DELIVERY

EASY TO USE PRODUCTS



**BE ACCOMPANIED IN YOUR  
LARVAL REARING PROJECTS**

---

BIONAMERIS OFFERS DIFFERENT  
**PRODUCTS** DEDICATED TO **LARVAL  
REARING** OF MARINE FISH



# MICROALGAE-BASED NUTRITIONAL SOLUTIONS

→ TO SUPPLY YOUR CULTURES

→ TO ENRICH LIVE PREYS

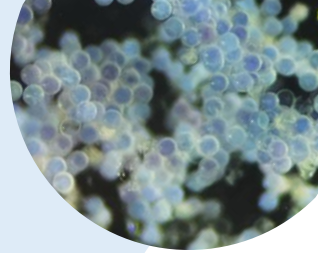
Some microalgae species have a high fatty acid content (EPA, DHA) that are crucial for the normal larval development of marine fish.

**BioNaMeris offers nutritional solutions composed of a mix of two microalgae species.  
Such a nutritional solution increases the nauplii growth and the survival of adult copepods.**



*Product reference: SNPVSN  
Packaging: 250, 500 or 2,500 ml*

# COPEPOD EGGS



→ TO FEED THE FIRST LARVAL STAGES OF MARINE FISH AND CRUSTACEANS

Nauplii of copepods correspond to the first stages of these small crustaceans. They open new perspectives in both aquaculture and aquariological domains. Using such live preys makes possible to breed marine fish which were impossible to rear before. **Succeed in larval rearing** by using copepods that have both the size and the nutritional values **adapted** to the morphology and the diet of your larvae.



BioNaMeris sells eggs of the copepod *Acartia tonsa* that are produced with a patented technology. This production technique is an effective way to produce high quality nauplii with an attractive nutritional value.



Supply your larval tank with fresh newly hatched nauplii in less than **24h!**

Product reference: ECATAN

Packaging : 2.5, 5 or 10 million eggs

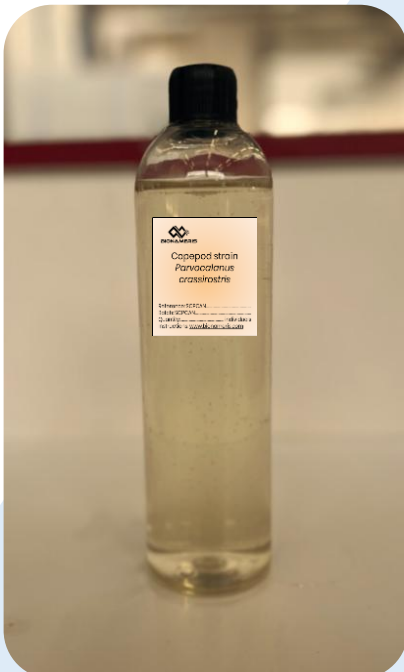
# LIVE PREYS

➔ TO FEED LARVAE AND POST LARVAE STAGES OF MARINE FISH AND CRUSTACEANS

Numerous studies have highlighted the crucial role of copepods and the importance of a diversified food in the survival and the growth of fish larvae. A successive supply of live preys ensures the normal development, while reducing malformations and larval mortality. Progressively adding copepods, rotifers and artemia is therefore a way to larval rearing success.



**BioNaMeris commercialises strains of copepods and rotifers. We also sell live artemias for post larvae and adult fish.**



*Products references:*

*Copepod strain Acartia tonsa: SCATSN*

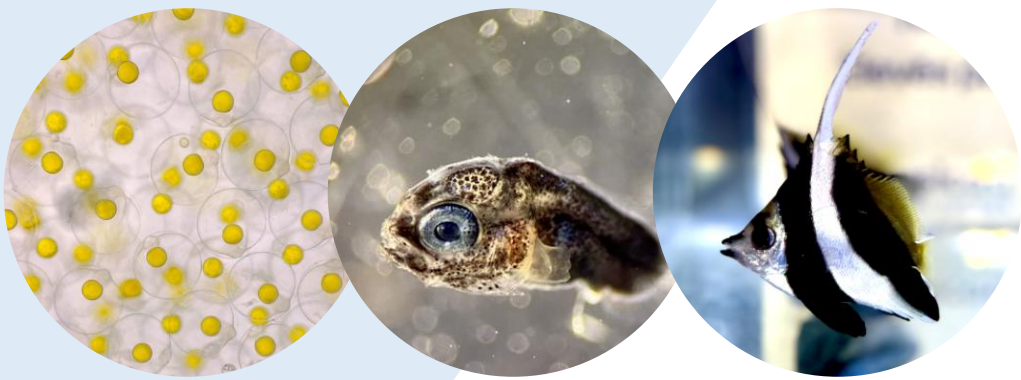
*Copepod strain Parvocalanus crassirostris: SCPCSN*

*Rotifer strain: SRBPSN*

*Artemia: LCASSN*

# BEING ACCOMPAGNIED

→ TO ASSIST YOU IN THE IMPLEMENTATION OF  
YOUR LARVAL EXPERIMENTS



**Want to implement an experimental set up or improve your  
knowledge in larval rearing?  
BioNaMeris supports both hatchery and aquarium.**



For any question,  
please contact us:

**[contact@bionameris.com](mailto:contact@bionameris.com)**



**BIONAMERIS**