

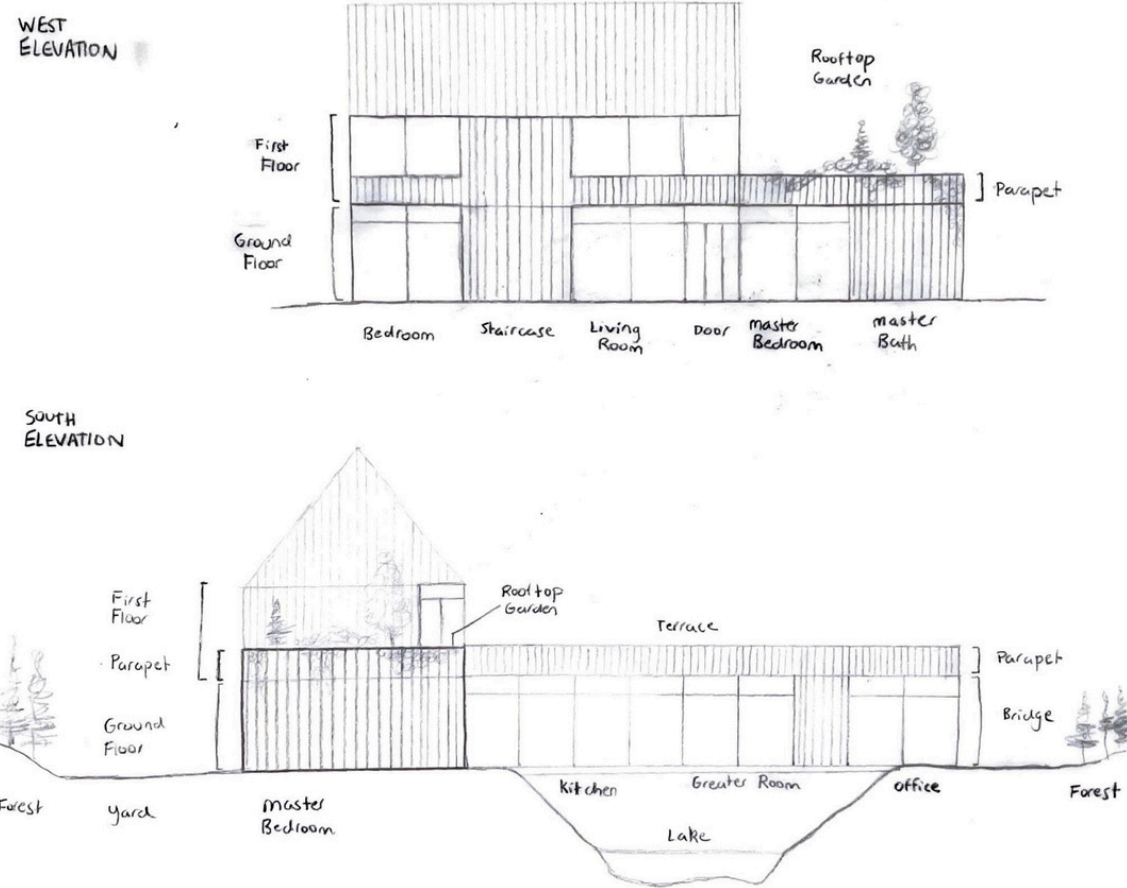
VALLEY HOUSE



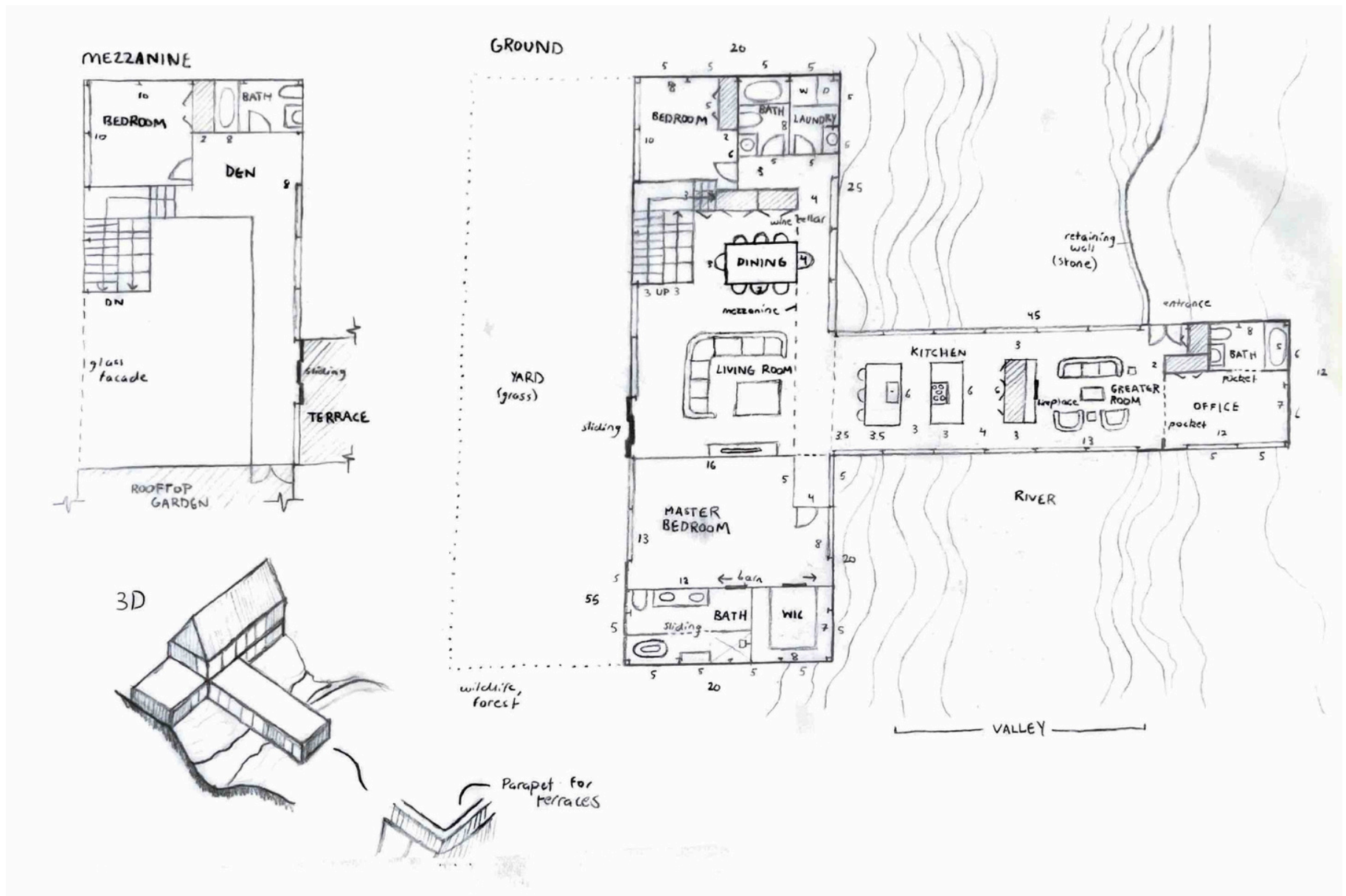
PROJECT OVERVIEW

Valley House was designed as a conceptual residence for a yet-to-be-acquired 2-acre parcel in the USA.

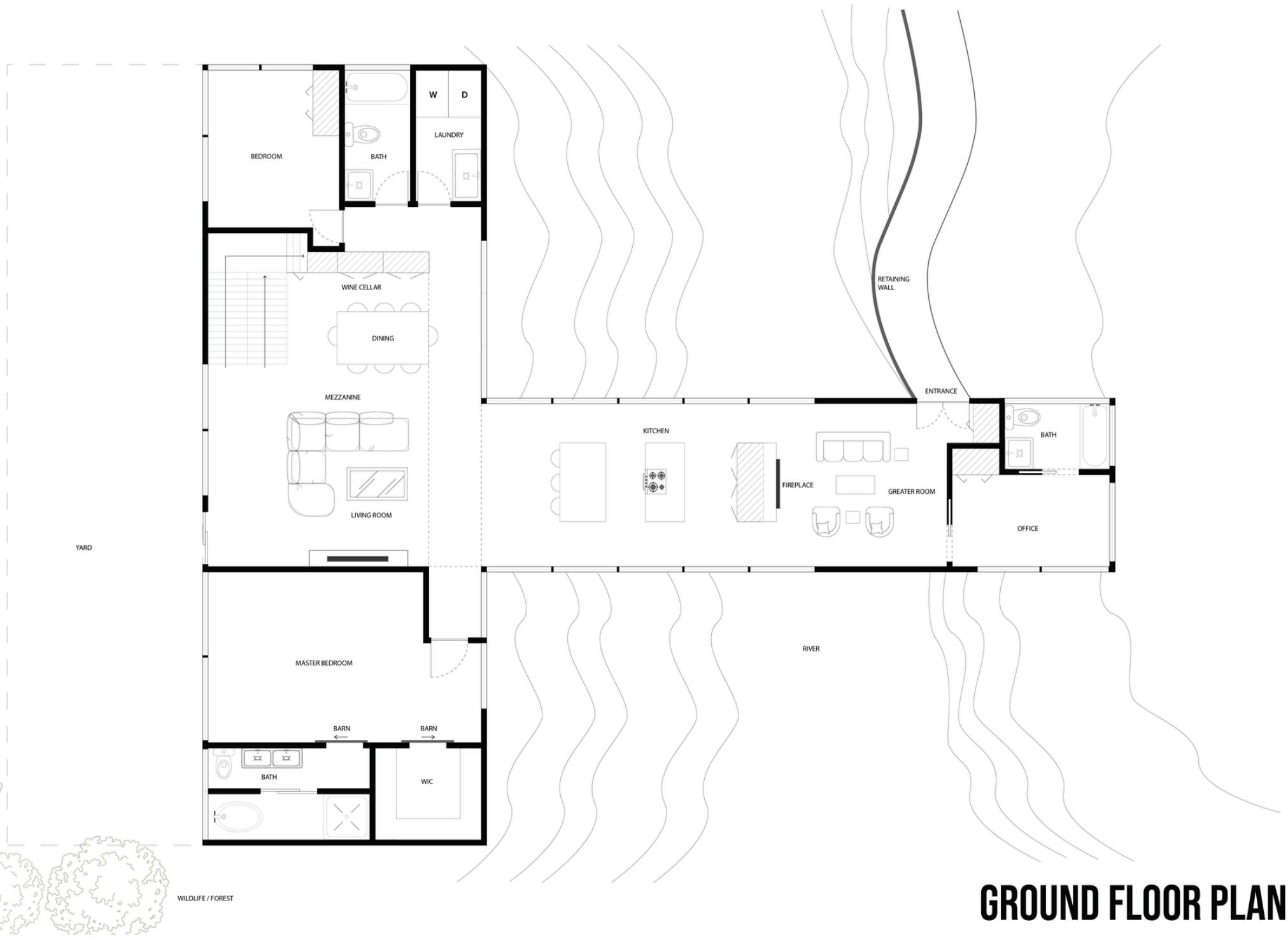
INITIAL SKETCHES



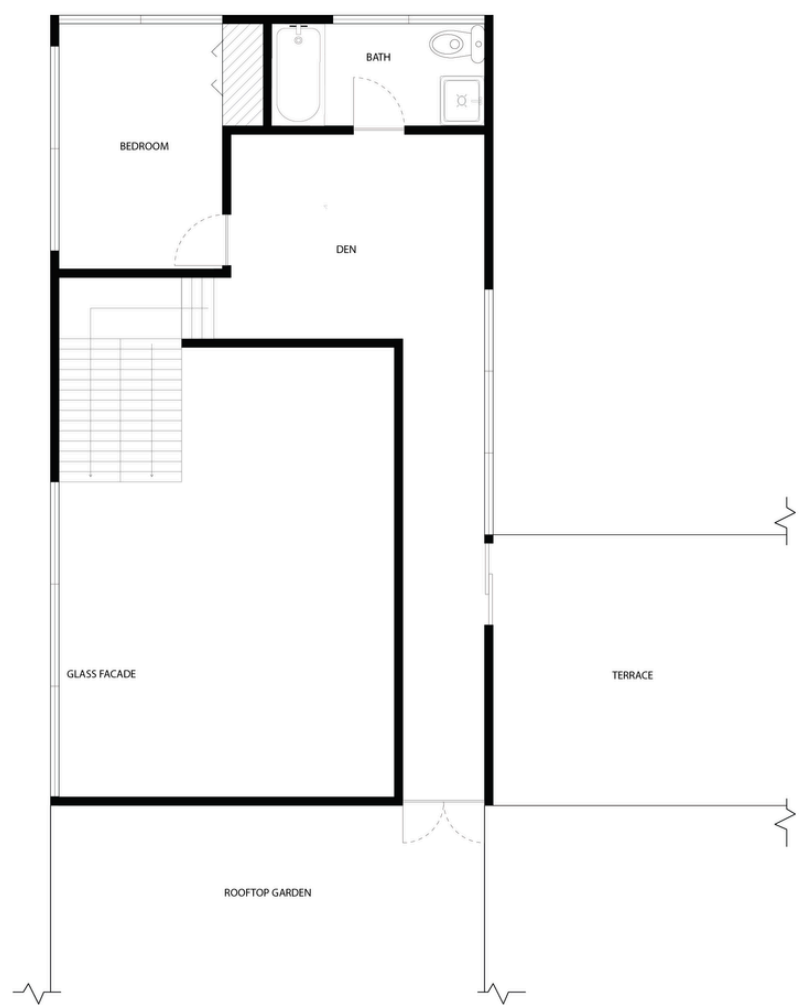
The design anticipates the terrain's potential for a suspended orientation across a river valley, allowing for maximum exposure to surrounding views. Prioritizing flexibility, the house can adapt to any future lot meeting the required topographic conditions. The program focused on open, interconnected living areas enclosed by floor-to-ceiling glazing. These elements create a visual and spatial continuity with the natural surroundings.



CAD FLOOR PLANS



GROUND FLOOR PLAN



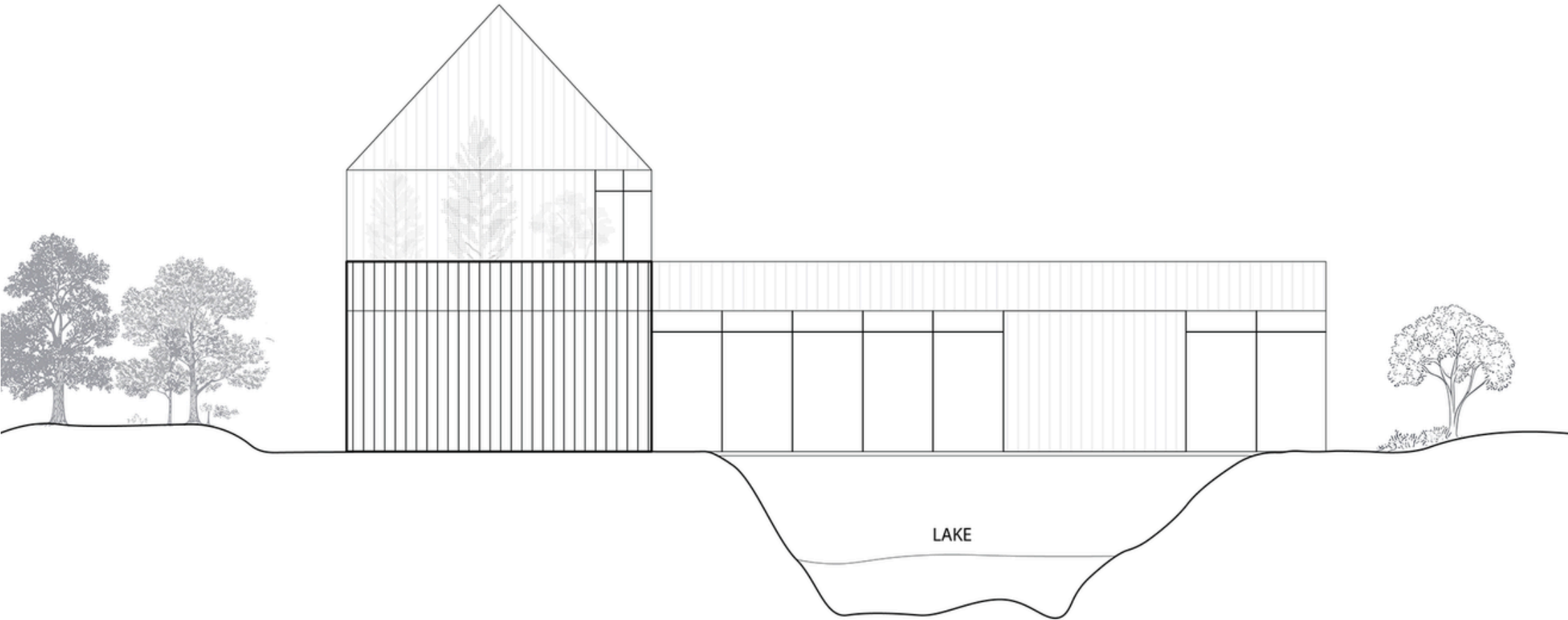
MEZZANINE FLOOR PLAN

INTERIOR RENDERS

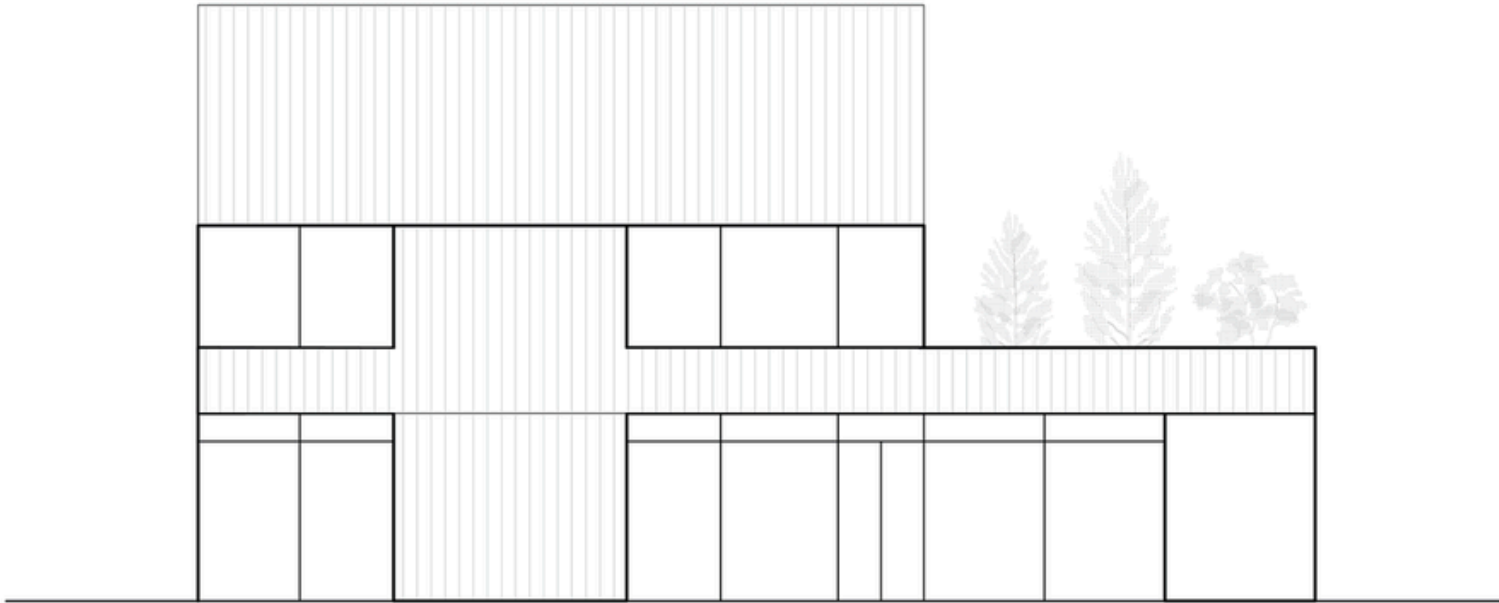
Inside, natural materials such as timber cladding and stone define the atmosphere, achieving a seamless transition between the built and unbuilt.



CAD ELEVATIONS




SOUTH ELEVATION



WEST ELEVATION

CONCLUSION



The project was strategically timed to fast-track construction documentation immediately upon land acquisition.