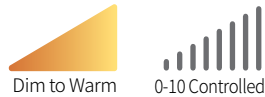


DATE PROJECT LOCATION TYPE



### PRODUCT FEATURES

- Dim to Warm / Tunable White 1800K-3000K
- Link together with FLX series
- Constant Voltage DC 24V driver
- Ultra-Slim Puck Light
- Recessed Mount
- Control with 0-10V, DALI, DMX, Zigbee

### PRODUCT SPECIFICATIONS

Power Input	24V DC Constant Voltage
Color Rendering Index	CRI>90
Available CCTs	1,800K~3,000K
Energy efficiency	81 lm/W
Operating Temperature Ranges	32-113°F (0-45°C)
Control	0-10V, DALI, DMX, Zigbee
Finish	Black, White, Silver (Special Order Option- Bronze)
Beam Angle	35°, 50°
Lamp life	50,000hr / 70%
Warranty	5 year Warranty
Note	"Product is approved for Closet / Storage space installation per NEC410.16 (A) (3) and NEC410.16 (C)(5) per NRTL certification"

### SPECIFICATION

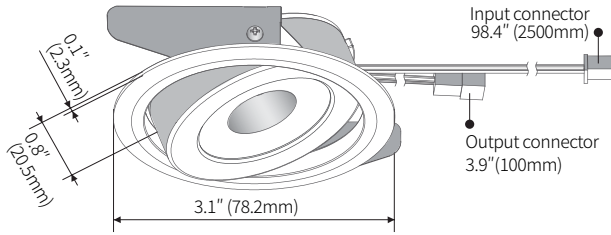
Model Name	Power Input	Lamp Power	Luminous Flux	Luminous Efficacy	Color Rendering Index	Color Temperature	Beam Angle	Operating Temperature
DVS4A CW-24V-SW-WT	DC 24V	3.6 W	292 lm	81 lm/W	CRI > 90	1800K ~ 3000K	35° 50°	0-45°C (32-113°F)

### SPECIFICATION GUIDE

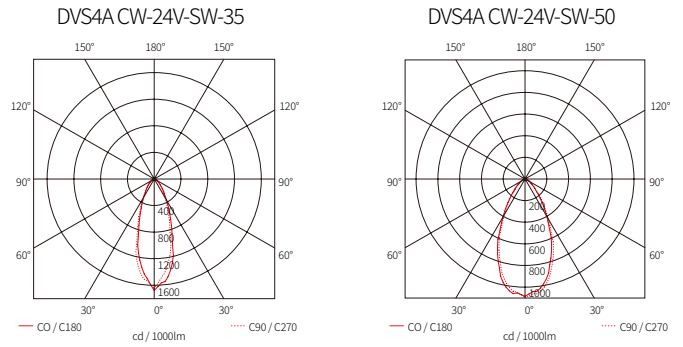
MODEL	COLOR	BEAM ANGLE	FINISH	MOUNTING	DRIVER	CONTROLS	VOLTAGE		
DVS4A-SW-DTW	18K -30K	C90	35° 50°	BK - Black WT - White SV - Silver BZ - Bronze (Special Order Option)	RM - Recessed Mount	CP - Cable/Plug HW - Hard Wire TD - 3rd Party Drivers Consult Factory	FDD-L20	0-10V DALI - DALI Interface DMX - DMX Interface	120V 230V 277V

## DIMENSION

\*Recessed Mount

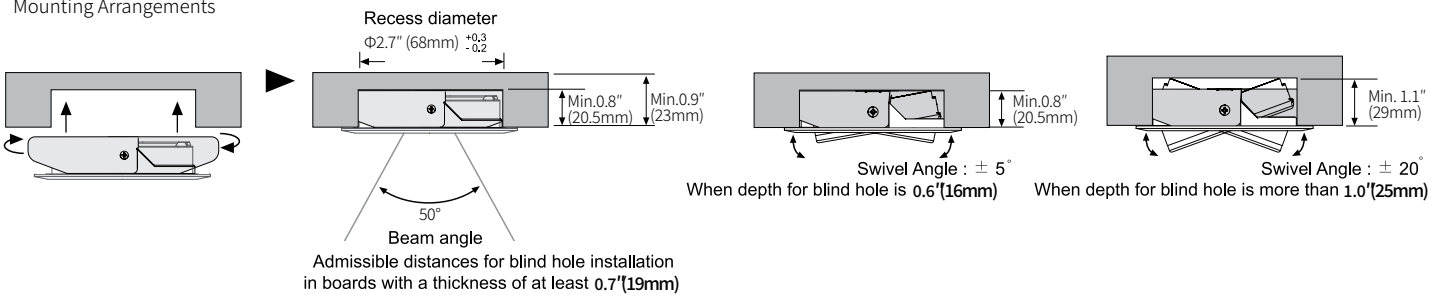


## BEAM ANGLE

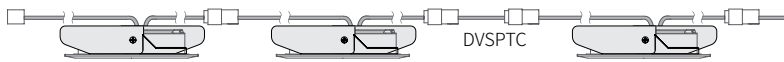


## INSTALLATION

Mounting Arrangements



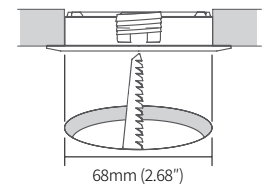
★ Linkable between FLX Spot DVS Swivel Dim to Warm and FLX Spot DVS Swivel Dim to Warm (Max 7 units connectable)



Linkable between FLX Spot DVS Swivel Dim to Warm & FLX Stix DDPro



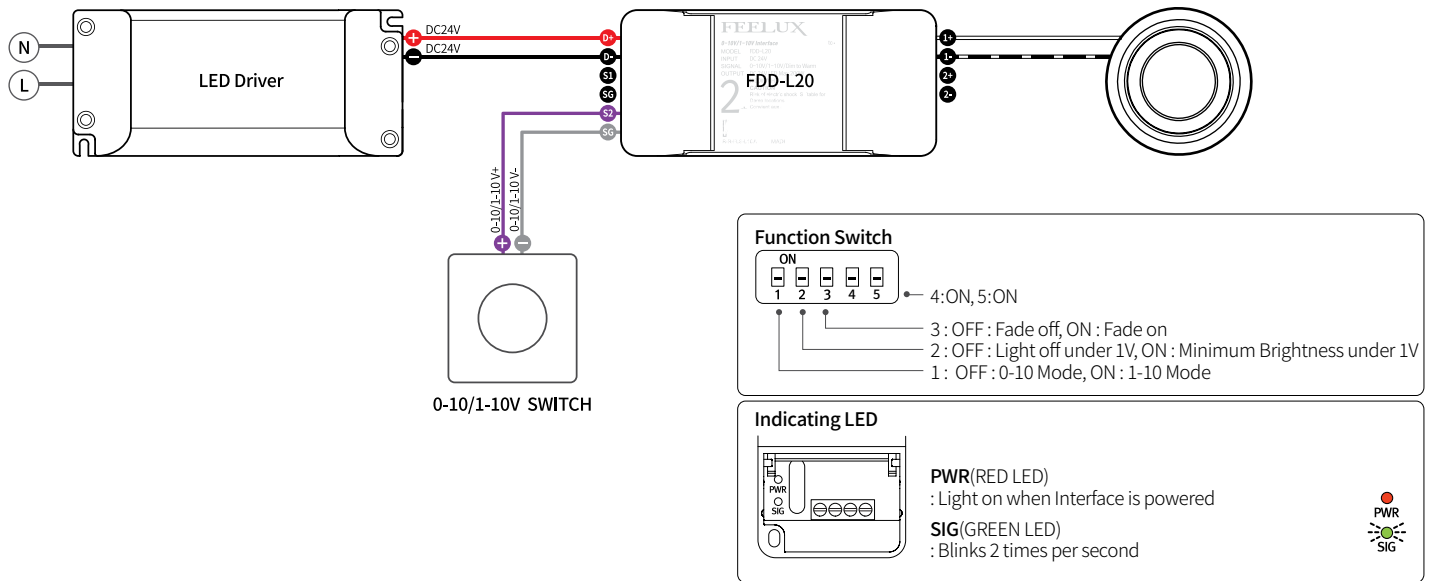
Hole Diameter



## VARIOUS OPTIONS



## DIM TO WARM MODE



## COMPONENTS



**FLX Spot DVS Swivel Dim to Warm**

- \_\_DVS4A CW-24V-SW-35-BK
- \_\_DVS4A CW-24V-SW-35-WT
- \_\_DVS4A CW-24V-SW-35-SV
- 35°, 50° angles are available
- Other finishes available as special order



**Extension Cable**

- \_\_DVSPTC (2,500mm)



**Control Interface (0-10V)**

- \_\_FDD-L20 \*
- Max. 200W (100W/CH, 2CH)



**Control Interface (DALI)**

- \_\_FDD-L1DA
- Max. 200W (100W/CH, 1CH)



**Control Interface (0-10V, DMX512)**

- \_\_FDA-L2MO
- Max. 200W (100W/CH, 2CH)
- \_\_FDA-L5M
- Max. 200W (50W/CH, 5CH)



**Control Interface (Zigbee)**

- \_\_FDD-L2Z



**Wireless Control (Zigbee Switch)**

- \_\_FSM-Z1



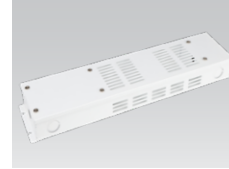
**12 Port Hub**

- \_\_D12P-HUB
- Included with Cord and Plug drivers. Order separately for Hard Wire or 3rd Party Drivers



**LED Drivers**

- \_\_FLC30-24V/XL (30W) \*
- \_\_FLC75-24V/XL (75W) \*
- With distributor and power cord 1800mm (6')



**Driver Junction Box**

- \_\_MHWB-FLE



**Hard Wire Driver**

- \_\_XLD200-224V-FCL-DIM (0-10V)
- \_\_XLD75-124V-FC \* (90V to 300V)



**Hard Wire Driver**

- \_\_FLE60-24V-L10-DIM (Linear)
- \_\_FLE90-24V-L10-DIM (Linear)

**A larger selection of drivers are available including remote and hard wire drivers. Please consult factory.**

\* FLC30, FLC75 and XLD75 require the FDD-L20 for Dim to Warm