

Ironbark No.1 Project: Offset Implementation Monitoring Report 2026



earthtrade

Date: 7 July 2026

Prepared for: Fitzroy Australia Resources

Our Reference: QMR213: 20250044A

Environmental Offset Solutions Pty Ltd
trading as Earthtrade

OFFICE ADDRESS

Suite 5A, 110 Eagle St
Brisbane QLD 4000

ACN: 128 110 976

ABN: 87 128 110 976

POSTAL ADDRESS

GPO Box 937
Brisbane QLD 4001

Tel: 1300 036 401

alan.key@earthtrade.com.au
www.earthtrade.com.au

DOCUMENT CONTROL

Version No.	Date	Revision details	Prepared by	Approved by
A	26 June 2026	First draft	J. Na	A. Key

ACKNOWLEDGEMENTS AND DISCLAIMER

This report should be cited as: Ironbark No.1 Project: *Offset Implementation Monitoring Report 2026*

ACKNOWLEDGEMENTS:

This document has been prepared by Environmental Offset Solutions Pty Ltd t/a Earthtrade with support from Fitzroy Australia Resources (Fitzroy) Ironbark No.1 Project.

TRADE MARKS:

EARTHTRADE®, EARTHTRADE TRUST™, GIS HIGHEST AND BEST USE™, GIS CARBON™, and the “E” logo are trade marks of Alan J Key Pty Ltd as trustee for the Key Family Trust (Earthtrade). Unauthorised use of the trade marks of Earthtrade (whether listed above, and whether registered, or otherwise) is expressly prohibited.

COPYRIGHT:

The content of these materials is copyright © Earthtrade 2026.

Earthtrade grants authorised licensees a non-exclusive, non-sublicensable, non-transferable, royalty-free licence to use these materials (including the sharing of these materials in connection with the licensee’s business), but strictly for its internal business purposes.

No part of these materials, including but not limited to any text and graphics, may otherwise be reproduced or transmitted in any form by any means, including by re-selling or other commercialisation, without the written permission of Earthtrade.

DISCLAIMER:

While every effort has been made to offer current and accurate information in these materials, errors can occur. The information contained on, or made available via, these materials is provided “as-is”, with no guarantees of completeness, accuracy or timeliness, and without warranties of any kind, express or implied.

Earthtrade may make periodic changes to these materials at any time.

The information presented in these materials should not be construed as legal, business consulting or practice management advice. You should consult with professional advisers before making any decision based on our materials. Earthtrade cannot accept any liability or responsibility for loss occurring as a result of anyone acting or refraining from acting in reliance on any of these materials.

Table of contents

- Summary 5
- 1 Introduction 7
 - 1.1 Purpose and scope of this report 7
 - 1.2 Project details..... 7
- 2 Offset monitoring and reporting methodology..... 8
 - 2.1 Monthly inspections..... 8
 - 2.2 Photo point monitoring for annual reporting purposes 9
 - 2.3 Five-yearly ecological surveys 12
- 3 Monitoring results 2026..... 12
 - 3.1 Suitably qualified person 12
 - 3.2 Site inspection – general observations 13
 - 3.3 Photo point monitoring 13
 - 3.4 Management activities report..... 14
 - 3.4.1 Fencing infrastructure 14
 - 3.4.2 Grazing 14
 - 3.4.3 Fire management..... 14
 - 3.4.4 Pest animal management 14
 - 3.4.5 Pest plant management..... 14
 - 3.4.6 Vegetation clearing/illegal forestry or timber harvesting..... 14
 - 3.4.7 Access and signage..... 14
 - 3.4.8 Extreme weather events 14
- 4 Assessment of compliance against the OMP 16
- 5 Conclusions 22
- List of abbreviations..... 23
- Glossary..... 24
- Appendix A: Survey photographs 27
 - Appendix A1: Ironbark survey sites 27
 - Appendix A2: Ironbark No. 1 offsets survey sites groundcover photos..... 39
- Appendix B: Landholder records 50
- Appendix C: BioCondition scoring for new Site 12..... 58

Index of figures

Figure 1: Locality map 6
Figure 2: Offset areas monitoring sites 11

Index of tables

Table 1: Project details 8
Table 2: Location of monitoring sites 10
Table 3: Dry matter yields at the survey sites 13
Table 4: Summary timetable of management actions from 1 July 2025 to 30 June 2026 15
Table 5: EPBC approval conditions related to the Ironbark No. 1 offsets on Springton and Bridgewater Creek 16
Table 6: Compliance with commitments made in the OMP 17
Table 7: Assessment of compliance of management actions over the offset area with the OMP 19

Summary

Fitzroy Australia Resources (**Fitzroy**) has developed an underground metallurgical coal mine on ML 700024 situated 35 km north-east of Moranbah in the Northern Bowen Basin, Queensland. The project was referred under the *Environmental Protection and Biodiversity Conservation Act 1999* (Cth) (**EPBC Act**) in 2007 (EPBC 2007/3643). The development was determined on 14 September 2017 as a controlled action, to have significant impacts to matters of national environmental significance (**MNES**).

The Offsets Management Plan (**OMP**) version D dated 29 January 2024 (Earthtrade, 2024) was approved by the Department of Climate Change, Energy, the Environment and Water (**DCCEEW**) on 5 April 2024¹. The approved offset property is situated at Mourindilla Road, Goowarra, Central Queensland, which is described as Lots 51– 53, 57 and 58 on HT26 and Lot 3 on HT141. This property is bounded by Springton Creek and Bridgewater Creek. It is approximately 4,977 hectares (**ha**) in area, and is located within the Brigalow Belt Bioregion North, circa 20 kilometres (**km**) north-east of Dingo and 104 km west of Rockhampton as shown in *Figure 1*.

This document is the second Offset Implementation Monitoring Report for the offsets. The voluntary declaration to legally secure the offset area was submitted to Department of Natural Resources and Mines (**DNRM**) in May 2025. Following approval of the OMP, Fitzroy commenced management of the offset area. The period covered by this report is from July 2025 to 30 June 2026.

This report provides details of the progress of implementation of the approved OMP for the project. This information includes details of landholder management and monitoring activities for the reporting period; the results of a site inspection carried out on 23 June 2026 and includes photo point monitoring. This report also provides an assessment of compliance of the offset with the requirements of the OMP.

The offset implementation to date is compliant with the requirements of the approved OMP. No management triggers have occurred that would require corrective actions to be implemented. The offset implementation is consistent with the commitments made by the project proponent in the OMP, and with the EPBC conditions of approval for the Ironbark No. 1 Coal Mine Project.

Recommendations

Following the assessment of compliance of the offset implementation to date against the requirements of the approved OMP, the following recommendations are made:

- Update fencing associated with Sites 1, 2 and 9 to exclude neighbours' cattle;
- Consider a cold burn in Sites 1 and 2 if there is enough fuel load to carry it; and
- Undertake grazing at Sites 3, 4, 5, 6, 7 and 8.

¹ Approval of Offset Action Management Plan for EPBC 2007/3643 Ironbark No. 1 Underground Coal Mine (formerly known as Ellensfield), North Bowen Basin, Queensland dated 5 April 2024.

Figure 1: Locality map



1 Introduction

1.1 Purpose and scope of this report

This report is the second Offset Implementation Monitoring Report on the implementation of the approved OMP for the offsets located on Mourindilla Road, Goowarra, Queensland for Fitzroy's Ironbark No. 1 Project (EPBC 2007/3643). This report covers the period from July 2025 to 30 June 2026, being the annual reporting period, as detailed in the OMP.²

Implementation of the OMP commenced in December 2024, within the 3-month period that was stipulated in EPBC approval condition 19. This report describes the management and monitoring activities undertaken within the offset areas on Springton Creek property since July 2025 to 30 June 2026.

This report is divided into the following main sections:

- Methodology of monthly inspections and quarterly monitoring
- Results of inspections and monitoring
- Management actions undertaken over the reporting period
- Assessment of compliance with the approval conditions, and the commitments made in the OMP
- Recommendations.

1.2 Project details

The details of the project, approval, and details of the offsets are shown below in *Table 1*.

² Earthtrade, 2024, Ironbark No. 1 Project: EPBC 2007/3643 Offsets Management Plan. See Section 11.

Table 1: Project details

Item	Details
Project name	Fitzroy Australia Resources: Ironbark No. 1 Underground Coal Mine
Project location	ML 700024, Northern part of Bowen Basin between Coppabella and Moranbah
EPBC approval number	2007/3643
Approved actions	Disturbance limits: 1. The approval holder must not impact more than 83 hectares (ha) of EPBC Act Listed threatened species and community’s habitat consisting of: a. 9.2 ha of Brigalow ecological community (TEC). b. 57 ha of Squatter Pigeon breeding habitat. c. 26 ha of Squatter Pigeon foraging habitat; and
Approval holder	Fitzroy (CQ) Pty Ltd ACN: 128 110 976
Offset location - address	Mourindilla Road, Goowarra, Queensland 4702
Lot/Plan (s)	Lots 51 – 53, 57 and 58 on HT26 and Lot 3 on HT141
Offset area (ha)	225 ha
Landholder name	Shane Edmestone and Narelle Edmestone
Landholder postal address	LOT 51 Springton Road Goowarra QLD 4702

2 Offset monitoring and reporting methodology

The requirements and scheduling of monitoring and reporting of the offset areas are detailed in Section 11 of the OMP and are summarised in this section. The requirements of the monitoring and reporting are a combination of site survey work and landholder recordkeeping and collation.

2.1 Monthly inspections

Table 13 of the OMP details the management actions that are to be undertaken across the offset areas. The offset areas are illustrated in *Figure 2*. The management actions include:

- Implementation of the management actions and adaptive management framework as outlined in the OMP.
- Follow the clearing restrictions set in the OMP. Construction and maintenance of access tracks, fencing, and firebreaks must follow the requirements of Table 13 in the OMP.³ Any necessary vegetation clearing must use best practice methods and comply with relevant laws.
- Grazing will occur only during the dry season and only when dry matter yield (**DMY**) exceeds 1,020 kg/ha. Grazing is not allowed during the squatter pigeon (southern) breeding season (typically April to end October), unless unseasonal rainfall justifies it for fire risk mitigation.
- Weed control for exotic grasses will focus on grazing by cattle and then maintaining DMY and ground cover during the dry season (April to end of October). Parkinsonia will be

³ Earthtrade, 2024, Ironbark No. 1 Project: EPBC 2007/3643 Offsets Management Plan. See Table 13.

treated using foliar spraying or cut stump methods. Weed control will begin early in the natural regeneration process and continue as needed to target weeds at the most effective times in their life cycles.

- Carry out pest animal control as outlined in Table 13,⁴ and actively participate in regional pest control programs, unless they conflict with the OMP.
- Control feral pigs as specified in Section 8,⁵ and fully support regional pest control programs, unless they conflict with the OMP.
- Fire management as per the OMP's requirements. In the event of nearby bushfires, coordinate with fire authorities to determine the best protection approach; compliance with their advice is allowed without further approval or agreement from DCCEEW. Firebreaks will be maintained along all external boundaries, with quarterly inspections and maintenance at least every two years. Cold burns may be used every 3–5 years during June to September, only when wind speeds are under 5 km/h. Fire damage to the offset area is considered an incident under Section 11 of the OMP.⁶
- All management actions in the OMP will be carried out to ensure the interim performance targets and completion criteria are met.
- Fences will be maintained to prevent unauthorised access and control stock. Signs prohibiting access will be installed at all entrances. All signs and planned fences will be in place within 6 months of OMP approval.

As a part of the schedule of these management actions, regular quarterly inspections are conducted to monitor the effectiveness of management actions across the offset areas.⁷ These monitoring inspections target the following attributes:

- General vegetation impacts, including:
 - Any illegal forestry operations or native timber harvesting
 - Any incidence of native plant destruction.
- Unauthorised impacts to vegetation as a result of illegal access or camping
- Weed presence, including the timing and effectiveness of control measures implemented
- Presence of pest animals, including occurrence, and the control measures implemented and their timing and effectiveness
- Grazing – cattle stocking rates, levels of grass cover, and the integrity and condition of fencing.

Monthly inspections are only conducted during grazing periods. Grazing is only allowed when DMY exceeds 1,020 kg/ha and only during the dry season, as a means of fire management by reducing fuel loads. DMY is measured in accordance with the Brigalow Belt pasture photo standards.⁸

2.2 Photo point monitoring for annual reporting purposes

The annual inspection was conducted in June 2026 due to wet weather preventing the scheduled inspection in May. During the June inspection, photo point monitoring was undertaken at the permanent survey sites (as shown in *Figure 2*, and detailed in *Table 2*). A full set of photos was

⁴ Earthtrade, 2024, Ironbark No. 1 Project: EPBC 2007/3643 Offsets Management Plan. See Table 13.

⁵ Earthtrade, 2024, Ironbark No. 1 Project: EPBC 2007/3643 Offsets Management Plan. See Section 8.

⁶ Earthtrade, 2024, Ironbark No. 1 Project: EPBC 2007/3643 Offsets Management Plan. See Section 11.

⁷ Earthtrade, 2024, Ironbark No. 1 Project: EPBC 2007/3643 Offsets Management Plan. See Table 16.

⁸ Available at <https://futurebeef.com.au/resources/brigalow-belt-pasture-photo-standards/>

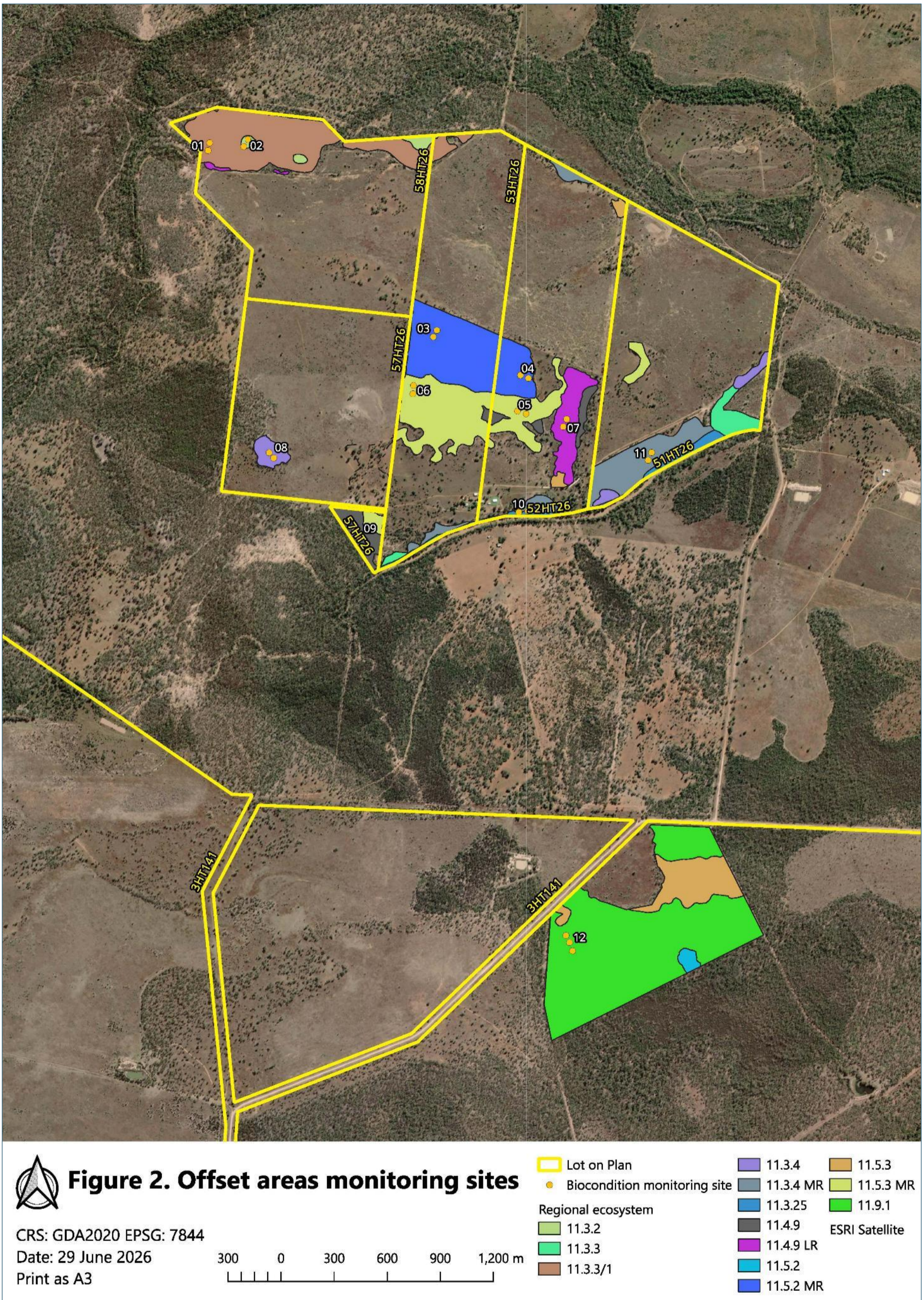
produced, taken at the start point of each transect, in a north, east, south and west direction. Photos of ground cover were taken at the same location from a height of 1.5 metres. These photos are included at *Appendix A: Survey photographs*.

Table 2: Location of monitoring sites

Regional ecosystem	Survey site number (to be consistent with the baseline data collected for the duration of the OMP)	Baseline survey site number	Offset area (ha)	Centre point location - easting	Centre point location - northing	Site Number (Appendix A)
11.4.9	AU1	AU6	9.18	750956	7398308	9
11.4.9	AU2	AU7	8.71	752139	7399012	7
11.3.2	AU3	AU1	1.99	750367	7400756	2
11.3.25	AU4	AU5	4.56	751911	7398453	10
11.3.3	AU5	AU2	35.57	750150	7400739	1
				751266	7400653	
11.3.4	AU7	AU3	4.99	750454	7398836	8
11.3.4	AU8	AU4	16.74	752596	7398753	11
11.5.3	AU11	AU11	22.88	751846	7396068	
				752988	7396111	
11.3.3	AU13 (MR1, MR2)	AU12	23.16	751862	7399067	5
				751277	7399234	6
11.9.1	AU14	AU14	68.59	752223	7395822	
				752298	7396452	12
11.5.2	AU15 (MR1, MR2)	AU9	28.63	751415	7399569	3
				751883	7399286	4

Coordinates system: GDA_1994_MGA_Zone_55

Figure 2: Offset areas monitoring sites



2.3 Five-yearly ecological surveys

The monitoring schedule in the approved OMP stipulates that ecological surveys of the offset areas are to be undertaken every 5 years.⁹ These surveys enable comparative changes in vegetation condition against baseline data collected on the offset site, as well as progress towards attainment and maintenance of the offset completion criteria. These surveys will record the ecological condition of the offset vegetation and relevant habitat features using BioCondition assessments based on the same methodology as the original offset survey work. The surveys will include targeted habitat quality assessments and species presence surveys for the Brigalow threatened ecological community (TEC) and the squatter pigeon (southern).

This reporting process will include an evaluation of all data collected during the preceding 5 years and make a comparison to earlier report findings including baseline conditions. This reporting process will re-calculate the condition of the offset areas using the offset assessment guide (DSEWPAC, 2012) and make a determination regarding achievement of the specific management outcomes and any recommendations for adaptive management required.

The evaluation will enable a determination of trajectory for the longer-term condition of the habitat for the one fauna species and the threatened ecological community, and if not on an appropriate trajectory, then modifications to management actions can be applied. Should recommended management actions vary drastically from those detailed in the OMP, then DCCEE will be informed as part of normal reporting processes.

The next full ecological survey for the offsets of this project is scheduled for 2028.

3 Monitoring results 2026

The second annual inspection of the offset areas was conducted on 23 June 2026 by Earthtrade's Alan Key, accompanied by Shane Edmestone (landowner). Photo point monitoring and a general inspection of the area was undertaken at the survey sites as utilised in the original ecological survey work undertaken in 2023,¹⁰ (as shown in Table 19 of the OMP). The locations of the survey sites are shown in *Figure 2* (above).

3.1 Suitably qualified person

Alan Key is a suitably qualified person with 19 years of experience in biodiversity offsets, having personally conducted over 100 offset monitoring inspections and authored the associated reports. Additionally, he has authored over 130 approved OMPs, offset strategies, and provides advisory services to the Western Australian and the United Kingdom Governments on this subject. Earthtrade personnel who undertook the inspection are experienced in regional navigational and journey management, and in the measurement and assessment of pasture levels, weed cover and DMY.

⁹ Earthtrade, 2024, Ironbark No. 1 Project: EPBC 2007/3643 Offsets Management Plan. See Table 16.

¹⁰ Ecological Assessment of Offset Investigation Area for Ironbark No. 1 Project. (May 2023, Kleinfelder Australia Pty Ltd).

3.2 Site inspection – general observations

Weather conditions during the inspection were warm and dry, with an air temperature of 24°. Rainfall records for the period covered by this report comparative to the mean are shown in *Appendix B: Landholder records*.

All offset areas appeared to be in a good condition at the time of the inspection of the offset on 23 June 2026. No evidence of tree death or growing infestations of weeds were noted during the inspection.

Ground cover over the offset area was deemed to be appropriate in most areas; however, grazing should be undertaken in the areas containing Sites 3, 4, 5, 6, 7 and 8 to reduce the fuel load to 1,020kg/ha (see photos of sites at *Appendix A2: Ironbark No. 1 offsets survey sites groundcover photos*). The DMY results for each survey site are summarised in *Table 3*. DMY measurements are in accordance with the pasture photo standards for the Brigalow Belt bioregion.¹¹

Table 3: Dry matter yields at the survey sites

Area	Site No.	Dry matter yield (kg/ha)
Home block offset area	1	1,940
	2	510
	3	1,940
	4	4,750
	5	1,940
	6	1,940
	7	2,650
	8	1,940
	9	510
	10	<500
	11	<500
Southern offset area (new site installed)	12*	DMY across the area < 510.
* Site 12 was installed on 27 May 2025. The baseline data for this site is supplied in Appendix C. The site itself could not be found and will be reinstalled; the DMY measure for this site is the average across the area surrounding the site.		

3.3 Photo point monitoring

Photo point monitoring was undertaken at the survey sites (as shown in *Figure 2*). A full set of photos were also produced, taken at the start point of each transect, in a north, east, south and west direction. Photos of ground cover were taken at the same location from a height of 1.5 metres. These photos are shown at *Appendix A: Survey photographs*.

¹¹ Available at <https://futurebeef.com.au/resources/brigalow-belt-pasture-photo-standards/>

3.4 Management activities report

During the annual inspection undertaken on 23 June 2026, the management activities that had been undertaken over the reporting period were noted, and landholder records collected and collated. The landholder records are presented in *Appendix B: Landholder records*. A summary of the management activities undertaken is provided in *Table 4*. The following sections provide further detail on each of the management actions over the reporting period.

3.4.1 Fencing infrastructure

Observations showed that there is an unserviceable boundary fence in the western section of the Home Blocks. There is a serviceable boundary fence on the rest of the eastern boundary and northern boundary. There is no boundary fence on the eastern boundary of the Southern Block. The southern boundary is well fenced. A program of works for property infrastructure (i.e. fire breaks, fencing) in priority areas should be developed for 2026-27.

3.4.2 Grazing

No cattle were observed during the inspection of the offset area. There is a fence in poor condition along the western boundary of the property, which has enabled cattle from the adjacent property to access the offset area at Sites 1, 2 and 9. The installation of fencing infrastructure has been identified as a priority.

3.4.3 Fire management

There is no evidence of recent fire in the offset areas.

3.4.4 Pest animal management

No pigs were sighted throughout the inspection.

3.4.5 Pest plant management

No significant populations of weeds were observed across the offset areas. Rubber vine in the vicinity of Sites 1 and 2 have been treated successfully. This activity will continue. It was noted that mother of millions appeared to have a rust in it affecting health and growth, and all occurrences of harissia cactus were observed to be infested with the harrisia mealy bug (*Hypogeococcus pungens*).

3.4.6 Vegetation clearing/illegal forestry or timber harvesting

No vegetation clearing, forestry activities or timber harvesting has been undertaken at the offset area.

3.4.7 Access and signage

Access to all offset areas is restricted to 2 entry points. Each entry point has had restricted access signage erected since June 2025.

3.4.8 Extreme weather events

No extreme weather events (i.e., cyclones, ex-tropical lows, severe storms or flooding) were recorded over the period covered by this report. Rainfall records for the period are shown in *Appendix B*: Landholder records.

Table 4: Summary timetable of management actions from 1 July 2025 to 30 June 2026

Management Actions								
Period	Grazing management – livestock numbers in the offset area		Fire management	Pest animal management	Weed management	Vegetation clearing and/or disturbance	Site signage and access	Landholder's management notes
	Ironbark No. 1 OMP							
	House	Bridgewater						
July 2025	Nil		30/9/25	30/9/25	30/9/25	30/9/25	30/9/25	Commenced land access agreements and installation of permanent monitoring sites.
August 2025								
September 2025	Cattle in 96, 7/9/25	Cattle in 66, 4/9/25						
October 2025			Control Burn outside the offset area on the Home Blocks to reduce fire risk	Trapped Wild Dogs	Sprayed Rubber Vine	31/12/25	31/12/25	<ul style="list-style-type: none"> We had a control burn on western portion. Burn off some old grass (adjacent to offset). I consistently trap & bait wild dogs. We get pig hunters in occasionally to reduce feral pig numbers. They have reported to have taken 5 in total in last quarter. Sprayed Grazon. Need control to Rubber Vine / Harrisia Cactus / Mother of Millions. Emailed 19/12/25
November 2025	Cattle out 66, 15/11/25			1080 baiting for pigs				
December 2025				Hunters -control Feral Pigs				
January 2026	Cattle out 30, 31/1/26	Cattle out 66, 31/1/26	NIL	Monitor pests on fence patrol. No pests viewed	Sprayed weeds early Feb	NIL	31/3/26	Sprayed Rubber Vine along creek. Have not seen any pests on either block.
February 2026	No grazing due to wet season							
March 2026								
April 2026								
May 2026			NIL	Monitor pests & have eradicated several dingos	Sprayed rubber vine + spread bug on Harrisia cactus.	NIL	In place.	Rubber vine & Harrisia cactus needs to be monitored & sprayed. All boundary needs to be graded to prevent a fire into offset area.
June 2026								

4 Assessment of compliance against the OMP

The details of the EPBC approval conditions that relate to the delivery of offsets are shown below in *Table 5*.

A number of commitments related to the delivery of offsets were also made in the approved OMP (see *Table 3* of the OMP). *Table 6* lists these commitments and provides details on whether the offset implementation is compliant with those commitments.

Table 7 provides an assessment of whether each of the management actions undertaken in the offset area over the period covered by this report are compliant with the OMP (see *Table 14* of the OMP).

Table 5: EPBC approval conditions related to the Ironbark No. 1 offsets on Springton and Bridgewater Creek

Condition	OMP section or comment
Offset Management Plan	
6. The approval holder must submit an OMP for the written approval of the Minister. The approved OMP must be implemented. The OMP must be prepared by a suitably qualified person in accordance with the Department's Environment Management Plan Guidelines and include:	The OMP will be approved by DCCEEW by 5 April 2024
a) details of environmental offset/s to compensate, in accordance with the EPBC Act Environmental Offsets Policy to the satisfaction of the Minister for the EPBC Act listed threatened species and communities habitat to be impacted as identified in Conditions 2a to 2c;	<i>Section 5, Appendix A, and Appendix B</i>
b) a description of the habitat condition to be impacted for the EPBC Act listed threatened species and communities habitat as identified in Condition 2a to 2c;	<i>Section 3 and Appendix B</i>
c) details of how the proposed offset/s and OMP meet the requirements of the EPBC Act EOP;	<i>Section 2, Table 4</i>
d) a field validation survey and baseline description of the current condition (prior to any management activities) of the offset area/s, including existing vegetation;	<i>Attachment 1B</i>
e) a description and map (including shapefiles) to clearly define the location and boundaries of the proposed offset area/s, accompanied by the offset attributes;	<i>Section 6 and Figure 8 and Figure 9. Shapefiles were supplied to DCCEEW.</i>
f) information about how the proposed offset area/s provide connectivity with other relevant habitats and biodiversity corridors;	<i>Section 4.1.1</i>
g) a description of the management measures (including timing, frequency and duration) that will be implemented in each offset area/s;	<i>Section 8</i>
h) a discussion of how proposed management measures take into account relevant approved conservation advices and are consistent with the measures contained in relevant recovery plans and threat abatement plans;	<i>Section 2.2, Table 5</i>
i) completion criteria and performance targets for evaluating the effectiveness of the OMP implementation, and criteria for triggering corrective actions;	<i>Section 9, Table 14</i>

Condition	OMP section or comment
j) a program to monitor, report on and review the effectiveness of the OMP;	Section 11
k) a description of potential risks to the successful implementation of the offset/s, and contingency measures that would be implemented to mitigate against these risks; and	Section 7, Table 12 Section 8, Table 13
l) details of the mechanism to legally secure the environmental offset/s.	Section 12
7. The approval holder must:	
a) have control of the offset area(s) by 12 December 2024	Section 12
b) apply to legally secure the offset area(s) by 12 March 2025;	Section 12
c) legally secure the offset area(s) by 12 December 2025; and	Section 12
d) within 10 business days of each offset area being legally secured, provide the Department with written evidence demonstrating that the offset has been legally secured and, if different from those originally provided, offset attributes and shapefiles that clearly define the location and boundaries of the offset area.	Section 12

Table 6: Compliance with commitments made in the OMP

Commitment	Relevant approval condition	Compliant?	Comment
The approval holder will prepare and submit an Offset Management Plan (OMP) to the Minister for approval.	6.	Yes	The OMP was approved by DCCEEW on 5 April 2024
The approval holder will a) have control of the offset area(s) by 12 December 2024 b) apply to legally secure the offset area(s) by 12 September 2025 c) legally secure the offset area(s) by 12 March 2026; and d) within 10 business days of each offset area being legally secured, provide the Department with written evidence demonstrating that the offset has been legally secured and, if different from those originally provided, offset attributes and shapefiles that clearly define the location and boundaries of the offset area.	7.a) 7.b) 7.c) 7.d)	Yes Yes TBC Yes	Under control by 26 November 2024 Legally secured with a VDec under the Vegetation Management Act 1999 on 30 July 2025
The approval holder will not commence the action until the Offset Management Plan has been approved by the Minister.	8.	Yes	The Action was commenced post the approval of the OMP
The approval holder will maintain accurate records substantiating all activities associated with or relevant to the conditions of approval, including measures taken to implement the management plans required by this approval, and make them available upon request to the Department. Such records may be subject to audit	18.	Yes	This document

Commitment	Relevant approval condition	Compliant?	Comment
by the Department or an independent auditor in accordance with section 458 of the EPBC Act or used to verify compliance with the conditions of approval. Summaries of audits will be posted on the Department's website. The results of audits may also be publicised through the general media.			
Within three (3) months of every 12-month anniversary of the commencement of the action, the approval holder will publish a report (the Annual Compliance Report) on its website addressing compliance with each of the conditions of this approval during the previous 12 months. Documentary evidence providing proof of the date of publication and non-compliance with any of the conditions of this approval will be provided to the Department at the same time as the Annual Compliance Report is published. Reports will remain published for the duration of this approval. The approval holder must continue to publish the Annual Compliance Report until otherwise advised by the Minister in writing.	19.	Yes	<i>This is the second annual report, and the report will be uploaded on the date of finalisation.</i>
The approval holder will report any contravention of the conditions of the approval to the Department in writing within five (5) business days of the approval holder becoming aware of a contravention.	20.	Yes	<i>No contraventions of the approval have been recorded.</i>
Unless otherwise agreed to in writing by the Minister, the approval holder will publish all plans referred to in the conditions of this approval on its website. Each plan will be published on the website within one month of being approved by the Minister. All plans will remain on the website for the duration of this approval unless otherwise agreed to in writing by the Minister.	27.	Yes	<i>Offset Management Plan was uploaded on 10 May 2024.</i>

Table 7: Assessment of compliance of management actions over the offset area with the OMP

Threat to offset values	Management actions	Monitoring	Trigger for adaptive management and corrective action(s)	Have trigger values been reached in the reporting period?	Description of corrective action undertaken and timing (if applicable), or other comments
<i>Degradation of habitat</i>	Implementation of the management actions and adaptive management framework as outlined in this OMP.	Monitoring of offset value habitat quality scores will be undertaken in accordance with Section 11. The results of monitoring events will be compared against the habitat quality scores in the interim performance targets and completion criteria to determine the progress of the offset area and recorded as part of reporting (see Section 11).	Habitat quality scores for interim performance targets are not achieved for one or more offset values by: <ul style="list-style-type: none"> Year 5 Year 10 Year 15 Year 20 	No	<i>The first 5-year ecology report is due in 2028</i>
<i>Habitat or vegetation loss through land clearing</i>	Protection of the offset area via a declared area under Section 19E and 19F of the VM Act, as described in <i>Section 12</i> , to be registered within six months of the approval of this OMP.	Reporting to the Australian Government consistent with any and all EPBC Act approval(s).	Any activities in contravention of the declared area management plan.	No	
	Comply with the restrictions on clearing established throughout this OMP. Construction and maintenance of access tracks, fencing and firebreaks will be undertaken in accordance with the requirements of <i>Table 13</i> . If vegetation clearing is required for fencing, access, firebreaks or public safety it must be undertaken in accordance with best practice management methods and any applicable legislative requirements.	Quarterly inspections will monitor and document if there is evidence of recent forestry or timber harvesting activities. Monthly and quarterly inspections will monitor and document vegetation clearing that has occurred for fire break, access road or fence line maintenance.	Detection of prohibited forestry operations, native timber harvesting or clearing outside of established access tracks, fire control lines and fence lines (existing infrastructure).	No	
<i>Degradation of habitat by overgrazing</i>	Stock will be grazed only when required to reduce DMY (i.e.: when DMY exceeds 1,020kg/ha), and only during the dry season. Stock are not to be grazed during squatter pigeon (southern) breeding season which is typically between April to end October. The dry season is normally between April and December; however, if unseasonal rainfall should occur, then grazing is to be allowed.	Habitat quality assessments will be undertaken in accordance with <i>Section 11</i> These will include assessment of percentage cover of native perennial grasses Dry matter yield measurements must be in accordance with the Brigalow Belt pasture photo standards. ¹²	Detection of stock grazing outside of the dry season, or during the exclusion period. Decrease in the richness and average ground layer cover at one or more habitat quality assessment sites based on the results of baseline and subsequent monitoring events.	No	<i>A small number of stock were introduced to a portion of the offset area in September, being a month early due to the concern of the amount of DMY and hence fire risk. They were all removed prior to the onset of the wet season.</i>
<i>Introduction, establishment and spread of non-native weeds including restricted invasive plants listed under the Biosecurity Act 2014 (Qld)</i>	The primary weed control method for exotic grasses will be grazing by cattle and then maintaining DMY and overall ground cover, which will be undertaken during the dry season (that is, from April to end of October each year). Parkinsonia will require foliar spraying or cut stump methods initially. Weed control will be undertaken as early as practicable within the natural regeneration process throughout the offset areas and then periodically as required to treat the weeds at the optimum time in their life cycles to control	Monitoring of this management action will be undertaken by the Pastoral Manager, Landholder or suitable qualified person appointed by the Landholder at least four times annually. Weed cover is to be monitored and at the same time as the DMY measurements. Quarterly inspections will observe and record the presence of weeds and success of previously applied weed control measures. The inspection will include before and after photos of the weed control area.	Pest plants dominate isolated area and or occur in an area greater than 10% of the offset area. A new declared pest weed species is identified at one or more monitoring sites, or opportunistically during any site inspection or other monitoring.	No No	

¹² Available at <https://futurebeef.com.au/resources/brigalow-belt-pasture-photo-standards/>

Threat to offset values	Management actions	Monitoring	Trigger for adaptive management and corrective action(s)	Have trigger values been reached in the reporting period?	Description of corrective action undertaken and timing (if applicable), or other comments
	and minimise the spread of the existing weed species.	Quarterly inspections will be conducted by the Pastoral Manager, Landholder or suitable qualified person appointed by the Landholder to record the DMY in the offset area.			
<i>Increased population of feral animals in the offset area. Wild cat, pig and dog populations are prevalent and highly transient, and therefore the scale of impact is potentially large. Major damage to the environment/habitat occurs when large numbers of animals congregate in the area.</i>	Implement control actions for pest animals in accordance with Table 13. Participate fully in, and cooperate with, any and all regional pest control programs, unless those would otherwise contravene a part of this OMP.	Undertake monitoring for pest animals in accordance with Section 11.	Any observed or suspected apparent substantial decline in squatter pigeon abundance detected during periodic full BioCondition assessments, or during quarterly site inspections (including site meander survey). Any observed evidence of feral animal presence (that is, an indicator of feral animals required to be recorded as part of the feral animal monitoring requirements by the landholder detailed in Table 13.)	No No	
<i>Degradation of habitat by feral pigs</i>	Implement control actions for feral pigs in accordance with Section 8. Participate fully in, and cooperate with, any and all regional pest control programs, unless those would otherwise contravene a part of this OMP.	Monitoring of this management action will be undertaken by the Pastoral Manager, Landholder or suitable qualified person appointed by the Landholder at least four times annually. Quarterly inspections will involve traversing the offset area with streams, low lying areas and vehicle access tracks being noted to record the presence of wallow holes, tracks and visual incidents in the offset area. If detected, these areas will be GPS-recorded and photographed and rechecked at the next quarterly inspection.	An increase in mean feral pig abundance from first year and subsequent monitoring events.	No	
<i>Fire The impact from uncontrolled fire would be a reduction in groundcover, thinning of the canopy and slowing of the offset site achieving the completion criteria. Due to the scale of the mapping products, site</i>	Implement fire management in accordance with requirements in this OMP. If one or more bushfires are current in the region and considered potentially threatening to the site, coordinate with all relevant fire authorities to determine the appropriate method of protecting the site (if the relevant fire authorities advise against seeking to protect the site from a specific fire, the approval holder may comply with that advice without needing approval or agreement from DCCEEW). The approval holder will maintain firebreaks along all external boundaries of the offset area. Fire control lines must be inspected quarterly. Maintenance must be undertaken as required and at least once every two years.	Monitoring of this management action will be undertaken by the Pastoral Manager, Landholder or suitable qualified person appointed by the approval holder at least four times annually. Quarterly inspections will monitor and document if there is evidence of wildfire, prohibited burning or force majeure events. Quarterly inspections will monitor and document if a prescribed low-intensity ecological burn has occurred, and recorded in the Annual report with the written advice from an ecologist or other suitably qualified person (e.g. Fire Warden) Weed cover is to be monitored by the same methodology and at the same time as the DMY and weed control undertaken post a fire event to ensure weed cover (weeds of national significance) is <10%. Dry matter yield measurements must be in accordance with the Brigalow Belt pasture photo standards.	Destruction of, or significant damage to, regrowth or fallen timber. The occurrence of deliberately lit fires.	No	

Threat to offset values	Management actions	Monitoring	Trigger for adaptive management and corrective action(s)	Have trigger values been reached in the reporting period?	Description of corrective action undertaken and timing (if applicable), or other comments
<i>specific data is not available..</i>	<p>Please note: if fire damages the offset areas, that constitutes an incident for the purposes of Section 11.</p> <p>In the offset area, a cold fire is only to be used at 3 to 5-year intervals during the months of June, July, August and September, when wind speeds are less than 5km/h on the offset site.</p>	The approval holder and the land manager will keep themselves informed of any bushfires in the region.			
<i>Offset fails to achieve the interim performance targets and completion criteria within the anticipated 5, 10, 15 and/or 20-year timeframes, respectively</i>	All management actions outlined in in this OMP will be implemented to ensure that the interim performance targets and completion criteria are achieved.	<p>Monitoring of the offset area will be undertaken in accordance with Section 11.</p> <p>The results of monitoring events will be compared against the interim performance targets and completion criteria to determine the progress of the offset area and recorded as part of reporting.</p>	<p>Interim performance targets are not achieved by year 5, 10 or 15.</p> <p>Completion criteria are not achieved by year 20.</p>	N/A	
<i>Site access</i>	<p>Fences will be maintained around to prevent unauthorised access and to control stock presence.</p> <p>Signs will be erected at all entrances and potential access points to the site stating that access to the site is forbidden.</p> <p>All signs and any new planned fences will be erected within six months of the approval of this OMP.</p>	<p>Monitoring of this management action will be undertaken by the Pastoral Manager, Landholder or suitable qualified person within 3 months of the offset area being legally secured and during quarterly inspections.</p> <p>Quarterly inspections will monitor and document evidence of unauthorised access to the offset area.</p> <p>Quarterly inspections will monitor and document if signage is fit for purpose.</p>	<p>Evidence of unauthorised persons, vehicles, and/or stock is detected at any point.</p> <p>Evidence of stock is detected at any point during exclusion times.</p> <p>Damage is detected to any fence or sign.</p>	No	

5 Conclusions

For the period covered by this offset implementation monitoring report, the offset areas on Springton and Bridgewater Creek are compliant with the requirements of the approved OMP. No triggers have been activated that would require corrective actions to be implemented. The offset implementation is consistent with the commitments made by the project proponent in the OMP, and also with the EPBC conditions of approval for the Ironbark No.1 project.

The OMP for the Ironbark No.1 project was approved in April 2024. Following approval of the OMP, Fitzroy commenced management of the offset area. The period covered by this report is from July 2025 to 30 June 2026.

List of abbreviations

Abbreviation	Description
AU	assessment unit
DCCEEW	Department of Climate Change, Energy, the Environment and Water
DMY	dry matter yield
DNRM	Department of Natural Resources and Mines (Qld)
DSEWPAC	Department of Sustainability, Environment, Water, Population and Communities (Australian) (former)
EOP	Environmental Offsets Policy (October 2012) (EPBC Act)
EPBC Act	<i>Environment Protection & Biodiversity Conservation Act 1999</i> (Cth)
Fitzroy	Fitzroy Australia Resources
ha	hectares
HQS	habitat quality scoring
km	kilometres
m	metres
MNES	matters of national environmental significance
OAG	Offset Assessment Guide (DCCEEW)
OMP	Offset Management Plan
Project	Ironbark No. 1 Coal Mine Project
RE	regional ecosystem
TEC	threatened ecological community
VM Act	<i>Vegetation Management Act 1999</i> (Qld)

Glossary

Term	Definition
Approval holder	The person to whom the approval is granted
Approved conservation advice/s	A conservation advice approved by the Minister under section 266B(2) of the EPBC Act.
Approved ecologist	means a person approved by the Department, that has professional qualifications and at least three (3) years of work experience designing and implementing surveys for nationally listed Brigalow Belt reptiles and can give an authoritative assessment and advice on the presence of nationally listed Brigalow Belt reptiles using relevant protocols, standards, methods or literature. If the person does not have appropriate professional qualifications, the person must have at least five (5) years of work experience designing and implementing surveys for nationally listed Brigalow Belt reptiles, and can give an authoritative assessment and advice on the presence of nationally listed Brigalow Belt reptiles using relevant protocols, standards, methods or literature
Business day	A day that is not a Saturday, a Sunday or a public holiday in the state or territory of the action.
Category A vegetation	Under Queensland vegetation management legislation, Category A vegetation is an area which is: a declared area an offset area, an exchange area, an area that has been subject to unlawful clearing or an enforcement notice, an area subject to clearing as a result of a clearing offence an area that the chief executive determines to be Category A. Category A areas are colour-coded red on the regulated vegetation management map. See <i>Vegetation Management Act 1999</i> (Qld), s20AL.
Category X vegetation	Under Queensland vegetation management legislation, all areas other than Category A, B, C and R areas are Category X areas. Some Category X areas are also identified on a PMAV as 'locked in'. Category X areas are also known as 'exempt areas' because activity in Category X areas is not regulated by the <i>Vegetation Management Act 1999</i> . Category X areas are colour-coded white on the regulated vegetation management map (see <i>Vegetation Management Act 1999</i> (Qld) s20A.).
Commence/ Commencement	Means the first instance of any specified activity associated with the action including clearance of vegetation and construction of any infrastructure. Commencement does not include minor physical disturbance necessary to: i. undertake pre-clearance surveys or monitoring programs; or ii. protect environmental and property assets from fire, weeds and pests, including erection or construction of fencing and signage, and maintenance or use of existing surface access tracks.
Compliance report/s	Written reports: providing accurate and complete details of compliance, incidents, and non-compliance with the conditions and plans; consistent with the Department's Annual Compliance Report Guidelines (2014) (or subsequent published revision); include a shapefile of any impact of any protected matters, or their habitat, undertaken within the relevant 12 month period; and identifying the version/s of the plans prepared and in existence in relation to the conditions of this approval during the relevant 12 month period.

Term	Definition
Control	means to exercise effective management authority over the offset area(s), such as to implement the Offset Management Plan and prevent any loss or degradation to the environmental values (when compared to the baseline quality) of the offset area(s).
Department	The Australian Government Department administering the <i>Environment Protection and Biodiversity Conservation Act 1999</i> .
Environmental Management Plan Guidelines	means the <i>Environmental Management Plan Guidelines</i> , Commonwealth of Australia 2014, or subsequent official revision.
Habitat condition	Means the baseline condition of suitable habitat for EPBC Act listed threatened species and communities and groundwater-dependent ecosystems determined from ecological surveys and with consideration of relevant Departmental documents including, but not limited to, EPBC Act referral guidelines, listing advices, approved conservation advices and recovery plans.
Habitat quality scores	A score out of ten, based on BioCondition assessment plus an assessment of habitat quality. A method of evaluating habitat quality within a particular community based on key indicators including site condition, site context and species habitat index (if necessary). The method produces a score out of 10, where the maximum score of 10 represents a fully intact system. Scores of 4, 5 and 6 may indicate good quality regrowth or medium value habitat.
Legally secure	Means to secure a legal agreement under relevant Queensland legislation, in relation to a site, to provide enduring protection for the site against development incompatible with conservation.
Minister	The Minister administering the <i>Environment Protection and Biodiversity Conservation Act 1999</i> .
Offset calculator	The <i>Offset Assessment Guide</i> spreadsheet tool as provided by DCCEEW
Offset Investigation Area	Area of land that was assessed for ecological values, within which an offset area could be selected, based on required values
Plan/s	Any of the documents required to be submitted to the Department, implemented by the approval holder and/or published on its website in accordance with the approval conditions.
Property map of assessable vegetation	A map certified by the chief-executive as a PMAV for an area and showing the vegetation category areas for the area (e.g. Category C area, Category X area) See <i>Vegetation Management Act 1999</i> (Qld), section 20AK.
Recovery plan	Means a recovery plan made or adopted by the Minister under the EPBC Act.
Regional ecosystem	Regional ecosystems are vegetation communities in a bioregion that are consistently associated with a particular combination of geology, landform and soil (Sattler and Williams 1999, <i>Vegetation Management Act 1999</i>).
Regrowth vegetation	Vegetation that is not remnant vegetation.
Regulated vegetation	Vegetation that: <ul style="list-style-type: none"> • is an endangered regional ecosystem, an of concern regional ecosystem, or a least concern regional ecosystem, and • forms the predominant canopy of the vegetation covering more than 50% of the undisturbed predominant capacity; averaging more than 70% of the vegetation's undisturbed height; and • composed of species characteristic of the vegetation's undisturbed predominant canopy.
Site habitat quality	A score on a scale of 0 to 10 representing a site's utility for each listed threatened species, where zero ('0') represents a site of no value to the species, and '10' represents ideal habitat. Unless agreed otherwise by the

Term	Definition
	Department, site quality must be comprised of 3 points for site condition, 3 points for site context, and 4 points for species stocking rate. These scores must be derived in accordance with the Queensland <i>Guide to determining terrestrial habitat quality: A toolkit for assessing land-based offsets under the Queensland Environmental Offsets Policy</i> (Version 1.2, April 2017), or subsequent published revision.
Site specific assessment/s	A baseline investigation which explains the scientific basis on which the description and location of impact/s and associated users, performance indicators, trigger values and limits have been derived, or not derived.
Squatter pigeon breeding habitat	means habitat for the squatter pigeon defined as follows: grassy woodland habitat in REs on land zones 3, 5 or 7, which are either within 1 km of a permanent water body; or within 1 km of a Queensland Government mapped wetland or ≥3rd order stream.
Squatter pigeon foraging habitat	means habitat for the squatter pigeon that is any remnant or regrowth open-forest to sparse, open woodland or scrub dominated by <i>Eucalyptus</i> , <i>Corymbia</i> , <i>Acacia</i> or <i>Callitris</i> species, on sandy or gravelly soils, within three (3) kilometres of a suitable, permanent or seasonal waterbody.
Suitably qualified person	Means a person who has professional qualifications and at least three (3) years of relevant work experience related to the nominated subject matters and can give an authoritative assessment, advice and analysis on performance relative to the subject matter using relevant protocols, standards, methods or literature. If the person does not have appropriate professional qualifications, the person must have at least five (5) years of work experience related to the subject matters and can give an authoritative assessment, advice and analysis on performance relative to the subject matter using relevant protocols, standards, methods or literature.
Threat abatement plan	Means a threat abatement plan made or adopted by the Minister under the EPBC Act.
Website	A set of related web pages located under a single domain name attributed to the approval holder and available to the public.

Appendix A: Survey photographs

Appendix A1: Ironbark survey sites

Project:
Ironbark No.1
Site:
Lot 58 HT26
Transect No:
1- AU2
DMY (kg/ha):
1,940
Location (E):
750150
Location (N):
7400739
Date:
23 June 2026

North



East

South



West

Project:	North		East
Ironbark No.1			
Site:			
Lot 58 HT26			
Transect No:	South		West
2-AU1			
DMY (kg/ha):			
510			
Location (E):	South		West
750367			
Location (N):			
7400756			
Date:	South		West
23 June 2026			

Project:
Ironbark No.1
Site:
Lot 53 HT26
Transect No:
3-AU9
DMY (kg/ha):
1,940
Location (E):
751415
Location (N):
7399569
Date:
23 June 2026

North



East

South



West

Project:	North			East
Ironbark No.1				
Site:				
Lot 52 HT26				
Transect No:	South			West
4-AU9-1				
DMY (kg/ha):				
4,750				
Location (E):	South			West
751883				
Location (N):				
7399286				
Date:	South			West
23 June 2026				

Project:	<div style="display: flex; flex-direction: column; align-items: center; justify-content: center;"> <div style="display: flex; flex-direction: column; align-items: center;"> North  East </div> <div style="display: flex; flex-direction: column; align-items: center;"> South  West </div> </div>
Ironbark No.1	
Site:	
Lot 52 HT26	
Transect No:	
5-AU12	
DMY (kg/ha):	
1.940	
Location (E):	
751862	
Location (N):	
7399067	
Date:	
23 June 2026	

Project:	North			East
Ironbark No.1				
Site:				
Lot 53 HT26				
Transect No:	South			West
6-AU12-1				
DMY (kg/ha):				
1,940				
Location (E):	South			West
751277				
Location (N):				
7399234				
Date:	South			West
23 June 2026				

Project:	North			East
Ironbark No.1				
Site:				
Lot 52 HT26				
Transect No:	South			West
7-AU7				
DMY (kg/ha):				
2,650				
Location (E):				
752139				
Location (N):				
7399012				
Date:				
23 June 2026				

Project:	North			East
Ironbark No.1				
Site:				
Lot 57 HT26				
Transect No:	South			West
8-AU3				
DMY (kg/ha):				
1,940				
Location (E):	South			West
750454				
Location (N):				
7398836				
Date:	South			West
23 June 2026				

Project:
Ironbark No.1
Site:
Lot 57 HT26
Transect No:
9-AU6
DMY (kg/ha):
510
Location (E):
750956
Location (N):
7398308
Date:
23 June 2026

North



East

South



West

Project:	North		East
Ironbark No.1			
Site:			
Lot 52 HT26			
Transect No:			
10-AU5	South		West
DMY (kg/ha):			
500			
Location (E):			
751911			
Location (N):			
7398453			
Date:			
23 June 2026			



Project:	North	 	East
Ironbark No.1			
Site:			
Lot 51 HT26			
Transect No:	South	 	West
11-AU4			
DMY (kg/ha):			
500			
Location (E):			
752596			
Location (N):			
7398753			
Date:			
23 June 2026			

Appendix A2: Ironbark No. 1 offsets survey sites groundcover photos

Project:	Code:	Site:	Transect No:	Location (E):	Location (N):	Date:
Ironbark No. 1 Coal Mine Project	QMR213	Lot 58 HT26	1- AU2	750150	7400739	23 June 2026
Picture 1			Picture 2			
						

Project:	Code:	Site:	Transect No:	Location (E):	Location (N):	Date:
Ironbark No. 1 Coal Mine Project	QMR213	Lot 58 HT26	2-AU1	750367	7400756	23 June 2026
Picture 1			Picture 2			
						



Project:	Code:	Site:	Transect No:	Location (E):	Location (N):	Date:
Ironbark No. 1 Coal Mine Project	QMR213	Lot 53 HT26	3-AU9	751415	7399569	23 June 2026
Picture 1			Picture 2			
						



Project:	Code:	Site:	Transect No:	Location (E):	Location (N):	Date:
Ironbark No. 1 Coal Mine Project	QMR213	Lot 52 HT26	4-AU9-1	751883	7399286	23 June 2026
Picture 1			Picture 2			
						

Project:	Code:	Site:	Transect No:	Location (E):	Location (N):	Date:
Ironbark No. 1 Coal Mine Project	QMR213	Lot 52 HT26	5-AU12	751862	7399067	23 June 2026

Picture 1 **Picture 2**






Project:	Code:	Site:	Transect No:	Location (E):	Location (N):	Date:
Ironbark No. 1 Coal Mine Project	QMR213	Lot 53 HT26	6-AU12-1	751277	7399234	23 June 2026
Picture 1			Picture 2			
						

Project:	Code:	Site:	Transect No:	Location (E):	Location (N):	Date:
Ironbark No. 1 Coal Mine Project	QMR213	Lot 52 HT26	7-AU7	752139	7399012	27 May 2026
Picture 1			Picture 2			
						

Project:	Code:	Site:	Transect No:	Location (E):	Location (N):	Date:
Ironbark No. 1 Coal Mine Project	QMR213	Lot 57 HT26	8-AU3	750454	7398836	27 May 2026
Picture 1			Picture 2			
						

Project:	Code:	Site:	Transect No:	Location (E):	Location (N):	Date:
Ironbark No. 1 Coal Mine Project	QMR213	Lot 57 HT26	9-AU6	750956	7398308	27 May 2026
Picture 1			Picture 2			
						

Project:	Code:	Site:	Transect No:	Location (E):	Location (N):	Date:
Ironbark No. 1 Coal Mine Project	QMR213	Lot 52 HT26	10-AU5	751911	7398453	27 May 2026
Picture 1			Picture 2			
						

Project:	Code:	Site:	Transect No:	Location (E):	Location (N):	Date:
Ironbark No. 1 Coal Mine Project	QMR213	Lot 51 HT26	11-AU4	752596	7398753	27 May 2026
Picture 1			Picture 2			
						

Appendix B: Landholder records



Edminstones FTR Ironbark No 1 Offset Area Management Record

Period: 1/7/2025 - 30/9/2025.

Name of Land Manager: *SILVIA EDMISTONE*

Note: Refer to the Management Actions table in the OAMP (Table 14) for a detailed schedule and descriptions of required management actions including monitoring tasks and triggers for corrective actions.

Month	Rainfall (mm)	Management activity											Fire management	Pest animal management	Weed management	Vegetation clearing?	Site signage and access?			
		HOUSE Grazing management BRIDGEMATERI																		
		Western portion					Eastern portion					Fencing check								
		Cattle in		Cattle out		Qty in at end of month	Cattle in		Cattle out		Qty in at end of month	✓						Date	Initials	
JULY	24mm	No	Date	No	Date		Qty in at end of month	No	Date	No		Date	Qty in at end of month	Week 1	✓	30/7/25				
		0	31/7/25			0	31/7/25				0	Week 2	✓							
												Week 3	✓							
												Week 4	✓							
AUG	20mm	No	Date	No	Date	Qty in at end of month	No	Date	No	Date	Qty in at end of month	Week 1	✓	1/9/25						
		0	31/8/25			0	31/8/25				0	Week 2	✓							
												Week 3	✓							
												Week 4	✓							
SEPT	10mm	No	Date	No	Date	Qty in at end of month	No	Date	No	Date	Qty in at end of month	Week 1	✓	5/9/25	30/9/25	30/9/25	30/9/25	30/9/25	30/9/25	
		96	7/9/25			66	4/9/25				66	Week 2	✓							
						Nil					Nil	Week 3	✓							
												Week 4	✓							
<ul style="list-style-type: none"> Stock is grazed for fuel reduction purposes only during September to January (wet season permitting) Grazing not permitted between February and August inclusive Cattle must be removed once the wet season commences; this may happen before January Fencing must be checked weekly during grazing periods. 											Fencing inspections to be conducted quarterly at a minimum during non-grazing periods					OAMP approved 3 June 2024 and implementation commenced				
		No	Date	No	Date	Qty in at end of month	No	Date	No	Date	Qty in at end of month	Week 1								
												Week 2								
												Week 3								
												Week 4								
		No	Date	No	Date	Qty in at end of month	No	Date	No	Date	Qty in at end of month	Week 1								
												Week 2								
												Week 3								
												Week 4								
Total rainfall: 54																				
Additional comments:																				
Provide any additional comments as may be necessary in the relevant column.																				



Edminstones FTR Ironbark No 1 Offset Area Management Record

Period: 1/10/2025 - 31/12/2025.

Name of Land Manager: SHARIE EDMISTONE

Note: Refer to the Management Actions table in the OAMP (Table 14) for a detailed schedule and descriptions of required management actions including monitoring tasks and triggers for corrective actions.

Month	Rainfall (mm)	Grazing management										Fencing check	Fire management	Pest animal management	Weed management	Vegetation clearing?	Site signage and access?	
		Western portion					Eastern portion											
		Cattle in		Cattle out		Qty in at end of month	Cattle in		Cattle out		Qty in at end of month							
OCTOBER	25	No	Date	No	Date	Qty in at end of month	No	Date	No	Date	Qty in at end of month	Week 1 ✓	31/10/25					
		96	1/10/25			66	1/10/25				66	Week 2 ✓						
												Week 3 ✓						
												Week 4 ✓						
NOVEMBER	72	No	Date	No	Date	Qty in at end of month	No	Date	No	Date	Qty in at end of month	Week 1 ✓	31/11/25					
		96	1/11/25	66	15/11	66	1/11				66	Week 2 ✓						
												Week 3 ✓						
												Week 4 ✓						
DECEMBER		No	Date	No	Date	Qty in at end of month	No	Date	No	Date	Qty in at end of month	Week 1 ✓	31/12/25					
		30	1/12			66	1/12				66	Week 2 ✓						
						Nil					Nil	Week 3 ✓						
						Nil					Nil	Week 4 ✓						
<ul style="list-style-type: none"> Stock is grazed for fuel reduction purposes only during September to January (wet season permitting) Grazing not permitted between February and August inclusive Cattle must be removed once the wet season commences; this may happen before January Fencing must be checked weekly during grazing periods. 												OAMP approved 3 June 2024 and implementation commenced						
<p>Fencing inspections to be conducted quarterly at a minimum during non-grazing periods</p>																		
<p>Total rainfall:</p>																		
<p>Additional comments:</p> <p>* WE HAD A CONTROL BURN ON WESTERN PORTION BURN OFF SOME OLD GRASS (ADJACENT TO OFFSET)</p> <p>* I CONSISTENTLY TRAP & BAIT WILD DOGS.</p> <p>* WE GET PIG HUNTERS IN OCCASIONALLY TO REDUCE FERAL PIG NUMBERS. THEY HAVE REPORTED TO HAVE TAKEN 5 IN TOTAL IN LAST QUARTER</p>																		
<p>SPRAYED GRASSHOPPER WEEB CONTROL TO RUBBER VINE / HARRISIA CACTUS / MOTHS OF MILLIONS.</p>																		
<p>EMMANUEL 19/12/25</p>																		



Edminstones FTR Ironbark No 1 Offset Area Management Record

Period: 1/1/2026 - 31/3/2026 Name of Land Manager: SUANIE EDMISTONE

Note: Refer to the Management Actions table in the OAMP (Table 14) for a detailed schedule and descriptions of required management actions including monitoring tasks and triggers for corrective actions.

Management activity														Fire management	Pest animal management	Weed management	Vegetation clearing?	Site signage and access?						
Month	Rainfall (mm)	1/1/2026 - 31/3/2026 Grazing management												Record the date of quarterly inspections and record the date and description of any management actions conducted in the relevant column. Provide copies of related records such as spray logs or shooting plans. Make note of any matters requiring corrective actions.										
		Western portion (HOUSE)						Eastern portion						Fencing check			Fire management	Pest animal management	Weed management	Vegetation clearing?	Site signage and access?			
		Cattle in		Cattle out		Qty in at end of month	Cattle in		Cattle out		Qty in at end of month	Date	Initials											
No	Date	No	Date	No	Date		No	Date																
JANUARY	120	96	11/26	96	31/1/26	66	11/26	66	31/1/26	66	31/1/26	31/1/26	NIL	MONITOR PESTS ON FENCE PATROL. NO PESTS VIEWED	SPRAYED WEEDS EVERY FEB.	NIL	31/3/26							
FEBRUARY	28	0	1/2/26		0	1/2/26			0	1/2/26		28/2/26												
MARCH	150	0	1/2/26		0	1/2/26			0	1/2/26		31/3/26												
		<ul style="list-style-type: none"> Stock is grazed for fuel reduction purposes only during September to January (wet season permitting) Grazing not permitted between February and August inclusive Cattle must be removed once the wet season commences; this may happen before January Fencing must be checked weekly during grazing periods. 										Fencing inspections to be conducted quarterly at a minimum during non-grazing periods						OAMP approved 3 June 2024 and implementation commenced						
		No	Date	No	Date	Qty in at end of month	No	Date	No	Date	Qty in at end of month	Week 1												
												Week 2												
												Week 3												
												Week 4												
		No	Date	No	Date	Qty in at end of month	No	Date	No	Date	Qty in at end of month	Week 1												
												Week 2												
												Week 3												
												Week 4												
Total rainfall:																								
Additional comments:		SPRAYED RUBBER VINE ALONG CREEK HAVIS NOT SEEN ANY PESTS ON EITHER BLOCKS.																						
Provide any additional comments as may be necessary in the relevant column.																								



Edminstones FTR Ironbark No 1 Offset Area Management Record

Period: 1/4/2026 - 30/6/2026

Name of Land Manager: SHARIE EDMISTONE

Note: Refer to the Management Actions table in the OAMP (Table 14) for a detailed schedule and descriptions of required management actions including monitoring tasks and triggers for corrective actions.

Management activity																			
Month	Rainfall (mm)	Grazing management										Fire management	Pest animal management	Weed management	Vegetation clearing?	Site signage and access?			
		Western portion					Eastern portion										Fencing check		
		No	Date	No	Date	Qty in at end of month	No	Date	No	Date	Qty in at end of month						✓	Date	Initials
APRIL		0	1/4/26	0		0	1/4/26	0		0	Week 1 ✓								
											Week 2 ✓								
											Week 3 ✓								
											Week 4 ✓								
MAY		0	1/5/26	0		0	1/5/26	0		0	Week 1 ✓								
											Week 2 ✓								
											Week 3 ✓								
											Week 4 ✓								
JUNE		0	1/6/26	0		0	1/6/26	0		0	Week 1 ✓								
					Nil				Nil		Week 2 ✓								
											Week 3 ✓								
											Week 4 ✓								
<ul style="list-style-type: none"> Stock is grazed for fuel reduction purposes only during September to January (wet season permitting) Grazing not permitted between February and August inclusive Cattle must be removed once the wet season commences; this may happen before January Fencing must be checked weekly during grazing periods. 											Fencing inspections to be conducted quarterly at a minimum during non-grazing periods		MONITOR PESTS & HAVE EXORCISED SEVERAL DWEEB. SPRAYED RUBBER VINE & SPREAD BURE ON HARSISIA CACTUS. NIL IN PLACE						
OAMP approved 3 June 2024 and implementation commenced																			
Total rainfall:																			
Additional comments: RUBBER VINE & HARSISIA CACTUS NEEDS TO BE MONITORED & SPRAYED PINE BOUNDARY NEEDS TO BE GRADED TO PREVENT A FIRE INTO OFFSET AREA.																			

Management activity																		
Month	Rainfall (mm)	Grazing management										Fire management	Pest animal management	Weed management	Vegetation clearing?	Site signage and access?		
		House			Eastern portion				Fencing check			Record the date of quarterly inspections and record the date and description of any management actions conducted in the relevant column. Provide copies of related records such as spray logs or shooting plans. Make note of any matters requiring corrective actions.						
		Cattle in	Cattle out	Qty in at end of month	Cattle in	Cattle out	Qty in at end of month	✓	Date	Initials								
July 2025	24mm	No	Date	No	Date	Qty in at end of month	No	Date	No	Date	Qty in at end of month	Week 1	✓	30/7/25				
								Week 2	✓									
								Week 3	✓									
		0	31/7/25					Week 4	✓									
August 2025	20mm	No	Date	No	Date	Qty in at end of month	No	Date	No	Date	Qty in at end of month	Week 1	✓	1/9/25	30/9/25	30/9/25	30/9/25	30/9/25
								Week 2	✓									
								Week 3	✓									
		0	31/8/25			Nil	0	31/8/25			Week 4	✓						
September 2025	10mm	No	Date	No	Date	Qty in at end of month	No	Date	No	Date	Qty in at end of month	Week 1	✓	5/9/25				
								Week 2	✓									
								Week 3	✓									
		96	7/9/25				66	4/9/25			Week 4	✓						
		<ul style="list-style-type: none"> Stock is grazed for fuel reduction purposes only during September to January (wet season permitting) Grazing not permitted between February and August inclusive Cattle must be removed once the wet season commences; this may happen before January Fencing must be checked weekly during grazing periods. 										Fencing inspections to be conducted quarterly at a minimum during non-grazing periods		OMP approved 5 April 2024 and implementation commenced				
Total rainfall:	54																	
Additional comments:		Provide any additional comments as may be necessary in the relevant column.																

Note: Refer to the Management Actions table in the OMP (Table 13) for a detailed schedule and descriptions of required management actions including monitoring tasks and triggers for corrective actions.

Management activity																			
Month	Rainfall (mm)	Grazing management										Fire management	Pest animal management	Weed management	Vegetation clearing?	Site signage and access?			
		House			Eastern portion				Fencing check			Record the date of quarterly inspections and record the date and description of any management actions conducted in the relevant column. Provide copies of related records such as spray logs or shooting plans. Make note of any matters requiring corrective actions.							
		Cattle in	Cattle out	Qty in at end of month	Cattle in	Cattle out	Qty in at end of month	✓	Date	Initials									
October 2025	25mm	No	Date	No	Date	Qty in at end of month	No	Date	No	Date	Qty in at end of month	Week 1	✓	31/10/25	Control Burn	Trapped Wild Dogs Hunters 1080 Control Feral Pigs	Sprayed Rubber Vine	31/12/25	31/12/25
											Week 2	✓							
											Week 3	✓							
		96	1/10/25				66	1/10/25				Week 4	✓						
November 2025	72mm	No	Date	No	Date	Qty in at end of month	No	Date	No	Date	Qty in at end of month	Week 1	✓	30/11/25					
												Week 2	✓						
												Week 3	✓						
		96	1/11/25	66	15/11/25		66	1/11/25				Week 4	✓						
December 2025		No	Date	No	Date	Qty in at end of month	No	Date	No	Date	Qty in at end of month	Week 1	✓	31/12/25					
												Week 2	✓						
												Week 3	✓						
		30	1/12/25				66	1/12/25				Week 4	✓						
		<ul style="list-style-type: none"> Stock is grazed for fuel reduction purposes only during September to January (wet season permitting) Grazing not permitted between February and August inclusive Cattle must be removed once the wet season commences; this may happen before January Fencing must be checked weekly during grazing periods. 										Fencing inspections to be conducted quarterly at a minimum during non-grazing periods	OMP approved 5 April 2024 and implementation commenced						
Total rainfall:																			
Additional comments:	Provide any additional comments as may be necessary in the relevant column.	<ul style="list-style-type: none"> We had a control burn on western portion. Burn off some old grass (adjacent to offset). I consistently trap & bait wild dogs. We get pig hunters in occasionally to reduce feral pig numbers. They have reported to have taken 5 in total in last quarter. 										Sprayed Grazon. Need control to Rubber Vine / Harrisia Cactus / Mother of Millions. Emailed 19/12/25							

Note: Refer to the Management Actions table in the OMP (Table 13) for a detailed schedule and descriptions of required management actions including monitoring tasks and triggers for corrective actions.

Management activity																			
Month	Rainfall (mm)	Grazing management										Fire management	Pest animal management	Weed management	Vegetation clearing?	Site signage and access?			
		House			Eastern portion				Fencing check			Record the date of quarterly inspections and record the date and description of any management actions conducted in the relevant column. Provide copies of related records such as spray logs or shooting plans. Make note of any matters requiring corrective actions.							
		Cattle in	Cattle out	Qty in at end of month	Cattle in	Cattle out	Qty in at end of month	✓	Date	Initials									
January 2026	120mm	No	Date	No	Date	Qty in at end of month	No	Date	No	Date	Qty in at end of month	Week 1	✓	31/1/26	NIL	Monitor pests on fence patrol. No pests viewed	Sprayed weeds early Feb	NIL	31/3/26
											Week 2	✓							
											Week 3	✓							
		96	1/1/26	96	31/1/26		66	1/1/26	66	31/1/26		Week 4	✓						
February 2026	28mm	No	Date	No	Date	Qty in at end of month	No	Date	No	Date	Qty in at end of month	Week 1	✓	28/2/26					
												Week 2	✓						
												Week 3	✓						
		0	1/2/26				0	1/2/26				Week 4	✓						
March 2026	150mm	No	Date	No	Date	Qty in at end of month	No	Date	No	Date	Qty in at end of month	Week 1	✓	31/3/26					
												Week 2	✓						
												Week 3	✓						
		0	1/2/26			Nil	0	1/2/26			Nil	Week 4	✓						
Total rainfall:																			
Additional comments:		Sprayed Rubber Vine along creek. Have not seen any pests on either blocks. Provide any additional comments as may be necessary in the relevant column.																	
		<ul style="list-style-type: none"> Stock is grazed for fuel reduction purposes only during September to January (wet season permitting) Grazing not permitted between February and August inclusive Cattle must be removed once the wet season commences; this may happen before January Fencing must be checked weekly during grazing periods. 																	
		Fencing inspections to be conducted quarterly at a minimum during non-grazing periods OMP approved 5 April 2024 and implementation commenced																	

Note: Refer to the Management Actions table in the OMP (Table 13) for a detailed schedule and descriptions of required management actions including monitoring tasks and triggers for corrective actions.

Management activity																		
Month	Rainfall (mm)	Grazing management										Fire management	Pest animal management	Weed management	Vegetation clearing?	Site signage and access?		
		House			Eastern portion				Fencing check			Record the date of quarterly inspections and record the date and description of any management actions conducted in the relevant column. Provide copies of related records such as spray logs or shooting plans. Make note of any matters requiring corrective actions.						
		Cattle in	Cattle out	Qty in at end of month	Cattle in	Cattle out	Qty in at end of month	✓	Date	Initials								
April 2026		No	Date	No	Date	Qty in at end of month	No	Date	No	Date	Qty in at end of month	Week 1	✓					
												Week 2	✓					
												Week 3	✓					
		0	1/4/26	0			0	1/4/26	0			Week 4	✓					
May 2026		No	Date	No	Date	Qty in at end of month	No	Date	No	Date	Qty in at end of month	Week 1	✓					
												Week 2	✓					
												Week 3	✓					
		0	1/5/26	0			0	1/5/26	0			Week 4	✓					
June 2026		No	Date	No	Date	Qty in at end of month	No	Date	No	Date	Qty in at end of month	Week 1	✓					
												Week 2	✓					
												Week 3	✓					
		0	1/6/26	0		Nil	0	1/6/26	0		Nil	Week 4	✓					
		<ul style="list-style-type: none"> Stock is grazed for fuel reduction purposes only during September to January (wet season permitting) Grazing not permitted between February and August inclusive Cattle must be removed once the wet season commences; this may happen before January Fencing must be checked weekly during grazing periods. 										Fencing inspections to be conducted quarterly at a minimum during non-grazing periods	OMP approved 5 April 2024 and implementation commenced					
Total rainfall:																		
Additional comments:	Rubber vine & Harrisia cactus needs to be monitored & sprayed. All boundary needs to be graded to prevent a fire into offset area. <i>Provide any additional comments as may be necessary in the relevant column.</i>																	

Note: Refer to the Management Actions table in the OMP (Table 13) for a detailed schedule and descriptions of required management actions including monitoring tasks and triggers for corrective actions.

Appendix C: BioCondition scoring for new Site 12

Survey ID	Springton	Site ID:	SPBC01	Site Photo				Site ID:	SPBC01				Tree Species		Strata	Rec.	KHT	Shrubs and Ground		Cover	Strata
Sample Round	1	Date:	270525					Eucalyptus cambageana	T1		Yes	yes		Geijera parviflora	5 - 25%	Shrub					
Orientation:	166 South	Observers	SL					Acacia harpophylla	T1		Yes			Eremophila mitchellii	<5% - commd	Shrub					
Coordinates:		Site type						Geijera parviflora		T2	Yes			Carissa ovata	5 - 25%	Shrub					
RE Code	11.9.1	RE Condition	Rem					Eremophila mitchellii		T2	Yes			Aristida calycina	25 - 50%	Native Grass					
Soil Type:	Loam	Aspect (°):	166 South					Terminalia oblongata		T2				Enteropogon ramosus	5 - 25%	Native Grass					
Topography:	Down slope							Elaeodendron australe		T2				Harrisia martinii	<5% - commd	Exotic Other					
Land Zone:	9 - Fine Grained Sedimentary Rocks													Aristida queenslandica	<5% - commd	Native Grass					
Geology:	Other	EDL:	T1											Psyrax odorata	<5% - commd	Shrub					
Vegetative Structure (formation):	Mid-high	Mid-dense (30-70%)												Cullen tenax (emus foot)	<5% - commd	Native Forb / Oth					
AU	AU1													Owenia acidula	<5% - commd	Shrub					
Strata	Height interval	Median	Est. cover	Dominant Species		Dominance							Paspalidium caespitosum	<5% - commd	Native Grass						
E													Capparis lasiantha	<5% - commd	Shrub						
T1	12-22	20	2 - 20%	Eucalyptus cambageana	D								Capparis loranthifolia	<5% - commd	Shrub						
T2	3-12	10	2 - 20%	Acacia harpophylla	S								Enneapogon lindleyanus	<5% - commd	Native Grass						
T3													Dodonaea viscosa	<5% - commd	Shrub						
S1	1-3	3	2 - 20%	Geijera parviflora	C								Bryonia oblongifolia	<5% - commd	Native Forb / Oth						
S2	0.5-1	0.5	2 - 20%	Carissa ovata	C								Atalaya hemiglauca	<5% - commd	Shrub						
G	0-1	0.5	20 - 50%	Aristida calycina	C								Denhamia oleaster	<5% - commd	Shrub						
													Erythroxylon australe (dogwood)	<5% - commd	Shrub						
													Ancistrachne uncinulata	<5% - commd	Native Grass						
													Everistia vacciniifolia	<5% - commd	Shrub						
													Opuntia	<5% - commd	Exotic Other						
													Heteropogon contortus	<5% - commd	Native Grass						
Tree height (clino) level ground or top of slope = distance from tree x (top% + bottom%)																					
Tree height (clino) from bottom of slope = distance from tree x (top% - bottom%)																					
Definitions																					
Dominance d = dominant; c = co-dominant; s = subdominant; a = associated																					
Estimated cover l = isolated (0.2-2%); v = very sparse (2-20%); s = sparse (20-50%); m = mid dense (50-80%); d = dense (80-100%)																					
Walker & Hopkins height classes: 1-3m = dwarf; 3-6m = low; 6-12m = mid-high; 12-20m = tall; 20-35m = very tall; >35m = extremely tall																					
W&H Crown cover: <0.2% = isolated trees or clumps; 0.2-20% = open woodland; 20-50% = woodland; 50-80% = open forest; 80-100% = closed forest.																					
100m line transect - Crown cover - Tree layer				100m line transect - Crown cover - Shrub layer				Species Richness in 50m x 10m plot				Photo No.									
Start	Finish	Intercept	Strata	Start	Finish	Intercept	Strata	Native Tree	6	Ground layer % 1x1 plots	Q1	Q2	Q3	Q4	Q5	Average					
3	4	1	T2	8.8	11	2.2	S2	Native Shrub	12	Native perennial grass	5	0	15	10	0	6					
5	7.8	2.8	T2	12.9	18	5.1	S2	Native Grass	7	Native other grass	0	0	0	0	0	0					
11.2	19.2	8	T1	18	20.6	2.6	S1	Forbs / Other	2	Native forb & other	0	0	0	0	0	0					
16	17.5	1.5	T2	22	25	3	S1	Total Non-native (%)	0	Native shrub (<1m)	15	0	15	10	30	14					
23.2	33.5	10.3	T1	51	52.5	1.5	S1	Coarse Woody Debris	87	Exotic grass	0	0	0	0	0	0					
54	68	14	T1	59	61	2	S2	Large Trees	Benchmark	Exotic forb & other	0	0	0	0	0	0					
68	77.5	9.5	T2	68.1	69	0.9	S2	Eucs	57, 64, 60, 57	Leaf & stick litter	30	10	50	80	20	38					
90.5	100	9.5	T1	73	76	3	S2	Non-Eucs	24, 25, 29, 25, 26	Rocks	0	0	0	0	0	0					
		0		91.5	100	8.5	S1	Braun Blanquet Cover Classes		Bare ground	50	90	20	0	50	42					
		0				0		1	<5% - rare	Cryptogams	0	0	0	0	0	0					
		0				0		2	<5% - common	Total	100	100	100	100	100	100					
		0				0		3	5 - 25%	Plot Disturbance	Fire damage:										
		0				0		4	25 - 50%	Clearing (inc. logging):	Storm damage:										
		0				0		5	50 - 75%	Cultivation (inc. pasture):	Trampling:										
		0				0		6	75 - 100%	Soil erosion:	Flood damage:										
		0				0				Firewood collection:	Feral herbivores:										
		0				0				Stock grazing:	Other:										
Total T1 (%)	41.8	Total T2 (%)	14.8	Total TE (%)	0	Total S (%)	28.8														