



Aromatic Plant Research Center

We provide uncompromising
quality control for your products.

Customer : doTERRA International
Lot Number : 232822
Date Filled : 10/09/2023

Column : ZB5 (60 m length × 0.25 mm inner diameter × 0.25 µm film thickness)
Instrument : Shimadzu GCMS-QP2010 Ultra
Carrier gas : Helium 80 psi
Temperature ramp : 2 degrees celsius per minute up to 260-degrees celsius
Split ratio : 30:1
Sample preparation : 5%w/v solution with Dichloromethane.



Comments:

The analysis of this Lemon Eucalyptus lot revealed no contaminants or adulteration.
The sample meets the expected chemical profile for authentic essential oils of *Eucalyptus citriodora*.

Analysied by : Ambika Poudel
Reviewed by : Dr. Prabodh Satyal



© Copyright 2023 Aromatic Plant Research Center. All rights reserved. Any publishing, copying, use, dissemination, or distribution of this report, including online, without the express written permission of Aromatic Plant Research Center is strictly prohibited.

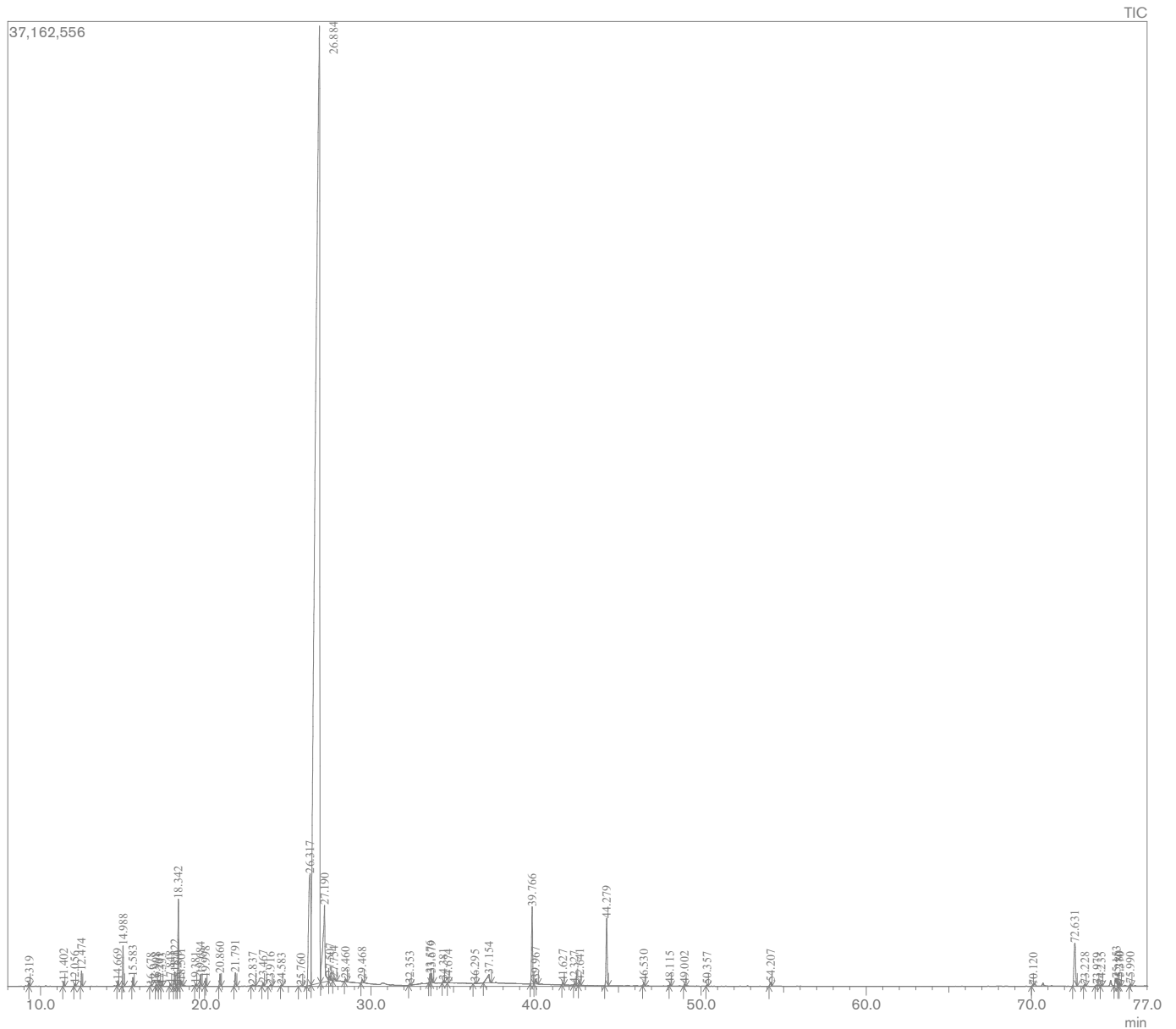
Lemon Eucalyptus Essential Oil

Customer : doTERRA International

Lot Number : 232822

Date Filled : 10/09/2023

Chromatogram



© Copyright 2023 Aromatic Plant Research Center. All rights reserved. Any publishing, copying, use, dissemination, or distribution of this report, including online, without the express written permission of Aromatic Plant Research Center is strictly prohibited.

Peak Report

Peak#	R.Time	Name	Area%
1	9.319	1-Isopropyl-3-methyl cyclopentane	0.04
2	11.402	Isobutyl isobutyrate	0.07
3	12.056	alpha-Thujene	0.03
4	12.474	alpha-Pinene	0.21
5	14.669	Sabinene	0.08
6	14.988	beta-Pinene	0.61
7	15.583	Myrcene	0.13
8	16.678	alpha-Phellandrene	0.02
9	16.998	Isoamyl isobutyrate	0.03
10	17.201	2-Methyl butyl isobutyrate	0.02
11	17.333	alpha-Terpinene	0.02
12	17.848	para-Cymene	0.04
13	18.122	Limonene	0.24
14	18.270	beta-Phellandrene	0.02
15	18.342	1,8-Cineole	1.49
16	18.501	cis-beta-Ocimene	0.09
17	19.381	Tetramethyl cyclohexane	0.03
18	19.684	Bergamal	0.20
19	19.998	gamma-Terpinene	0.13
20	20.860	para-Mentha-3,8-diene	0.21
21	21.791	Terpinolene	0.24
22	22.837	Linalool	0.04
23	23.467	cis-Rose oxide	0.07
24	23.916	Isodihydro lavandulyl aldehyde	0.03
25	24.583	trans-Rose oxide	0.02
26	25.760	Epoxy terpinolene	0.01
27	26.317	Isopulegol	4.97
28	26.884	Citronellal	80.94
29	27.190	Isoisopulegol	3.37
30	27.507	Menthone	0.10
31	27.754	neiso-Isopulegol	0.07
32	28.460	Terpinen-4-ol	0.04
33	29.468	alpha-Terpineol	0.07
34	32.353	Neral	0.03
35	33.576	6,7-Epoxy-3,7-dimethyl octanal A	0.19
36	33.679	6,7-Epoxy-3,7-dimethyl octanal B	0.19
37	34.381	Geranial	0.04
38	34.674	Citronellyl formate	0.01
39	36.295	Benzyl isobutanoate	0.02
40	37.154	Citronellic acid	0.44
41	39.766	Citronellyl acetate	1.57
42	39.967	Eugenol	0.12
43	41.627	Geranyl acetate	0.05
44	42.327	beta-Elemene	0.03
45	42.641	Phenyl ethyl isobutanoate	0.08
46	44.279	beta-Caryophyllene	1.42
47	46.530	alpha-Humulene	0.07
48	48.115	Germacrene D	0.03
49	49.002	Bicyclogermacrene	0.04
50	50.357	delta-Cadinene	0.03
51	54.207	Caryophyllene oxide	0.09
52	70.120	Lemon Eucalyptus sesquiterpenoid 1	0.02
53	72.631	Citriodiol acetal 1	1.31
54	73.228	Citriodiol acetal 2	0.03
55	73.979	Citriodiol acetal 3	0.04
56	74.235	Citronellal dimer 1	0.02
57	75.153	Citriodiol acetal 4	0.27
58	75.280	Citriodiol acetal 5	0.04
59	75.370	Citriodiol acetal 6	0.04
60	75.990	Geranyl linalool	0.04
			100.00

