

HUMAN ANATOMY

RESPIRATORY

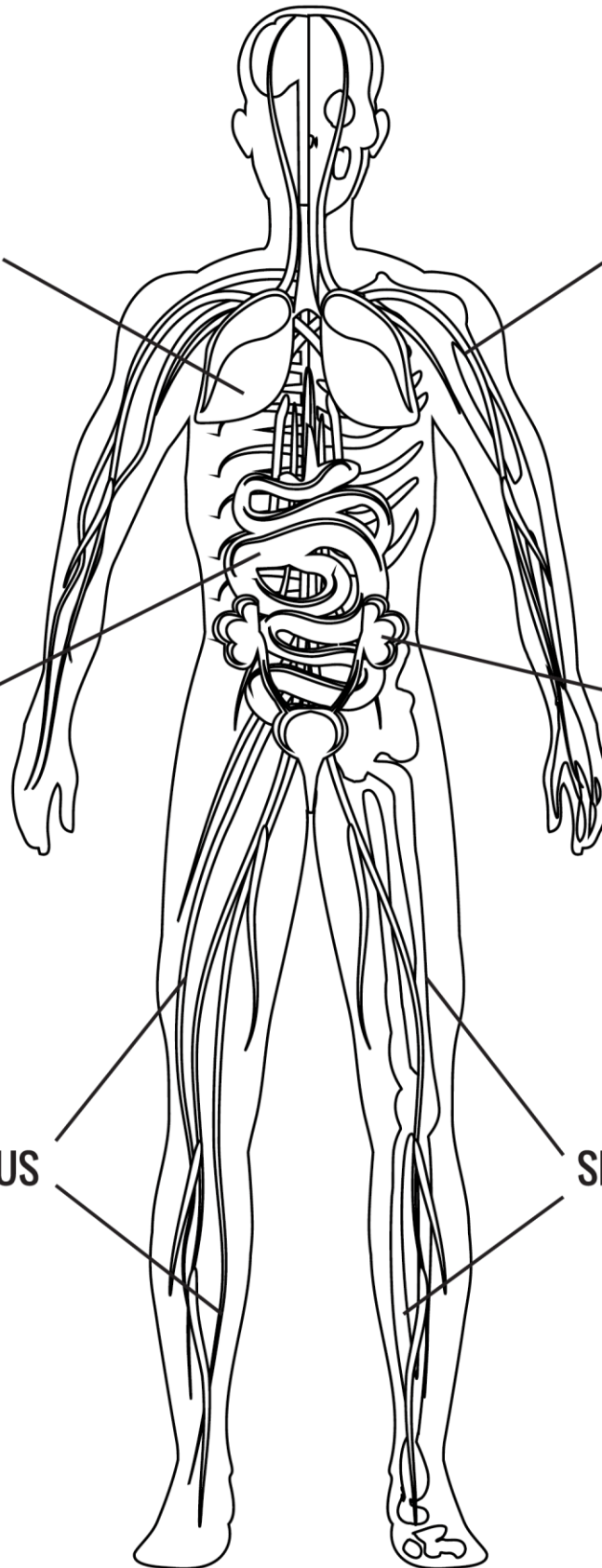
CIRCULATORY

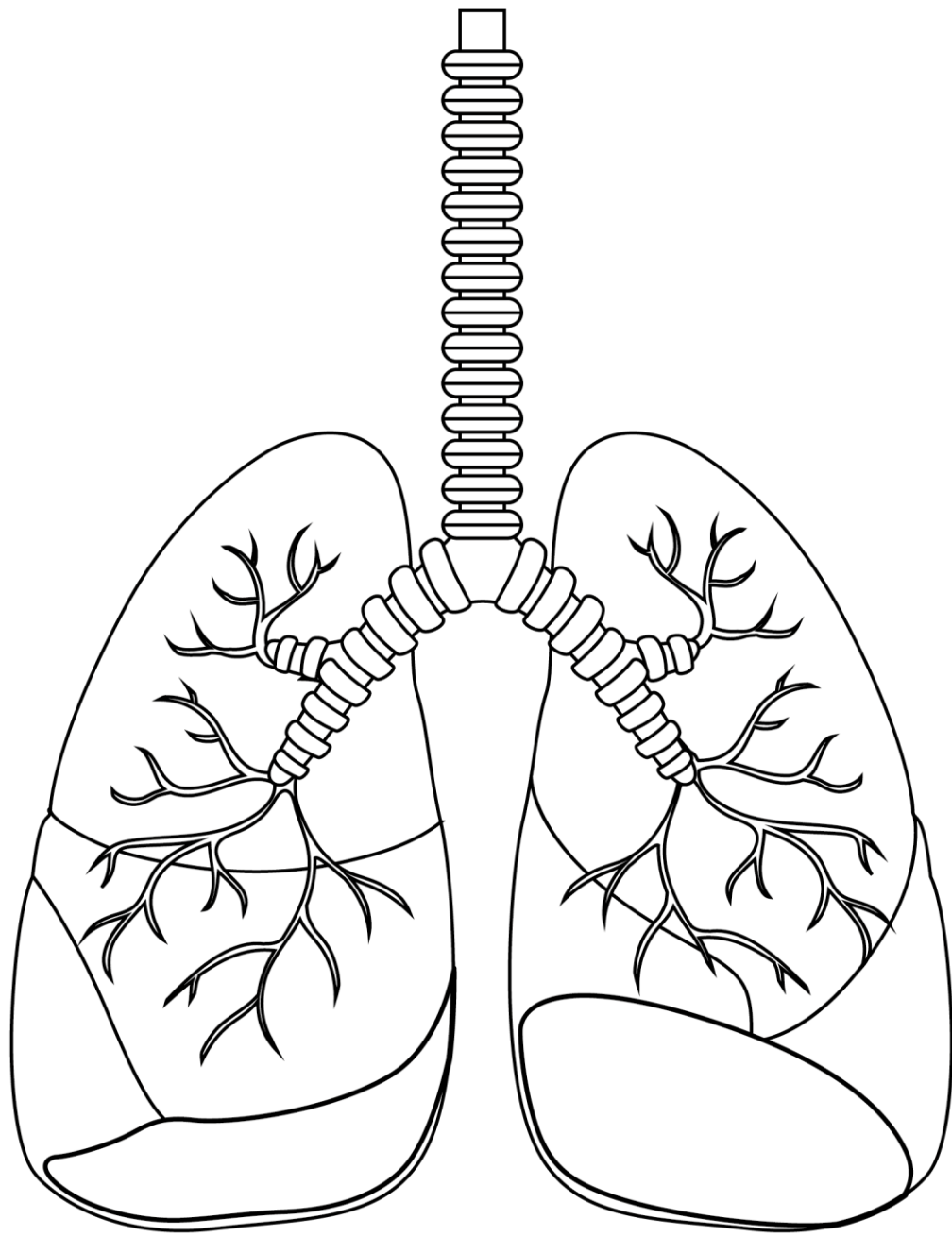
DIGESTIVE

URINARY

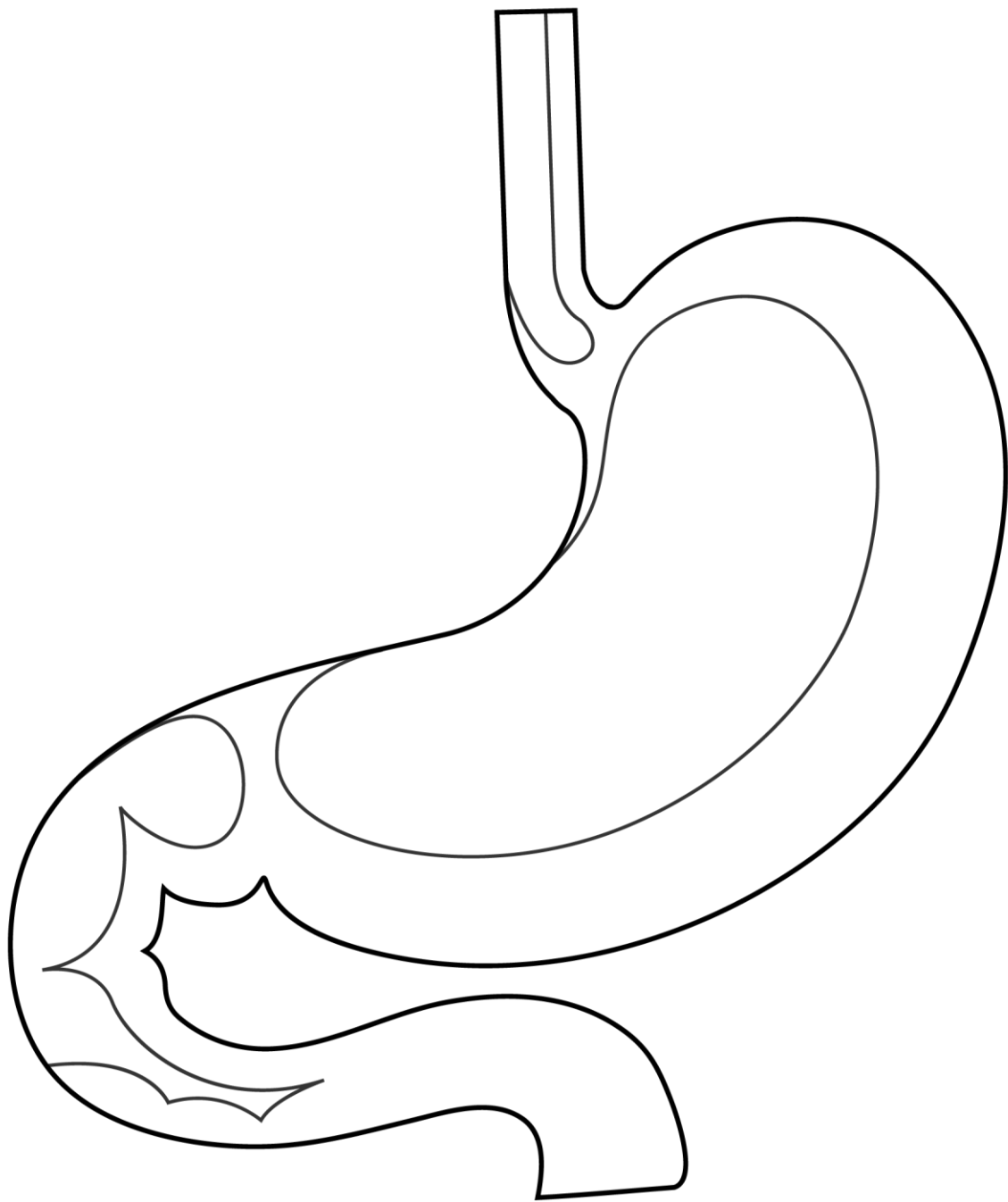
NERVOUS

SKELETON

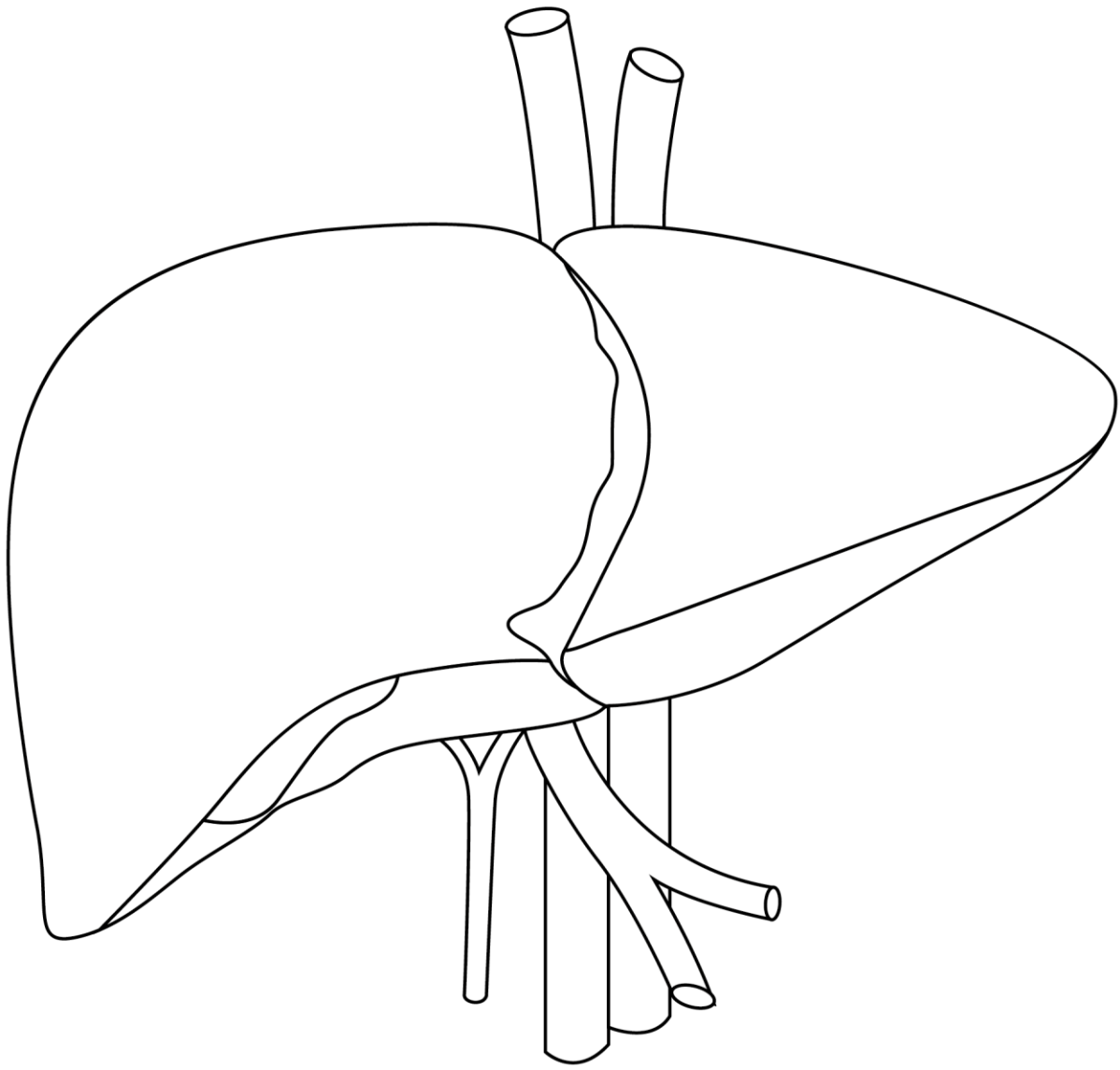




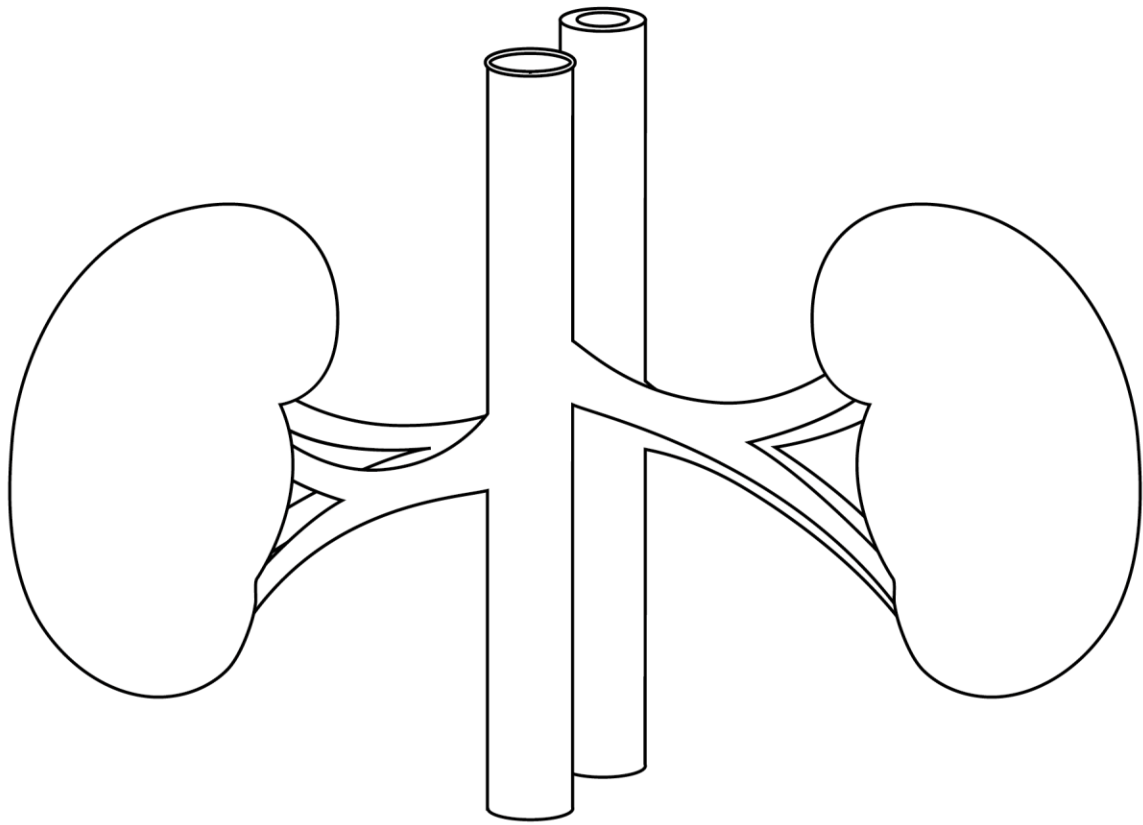
Lung



Stomach



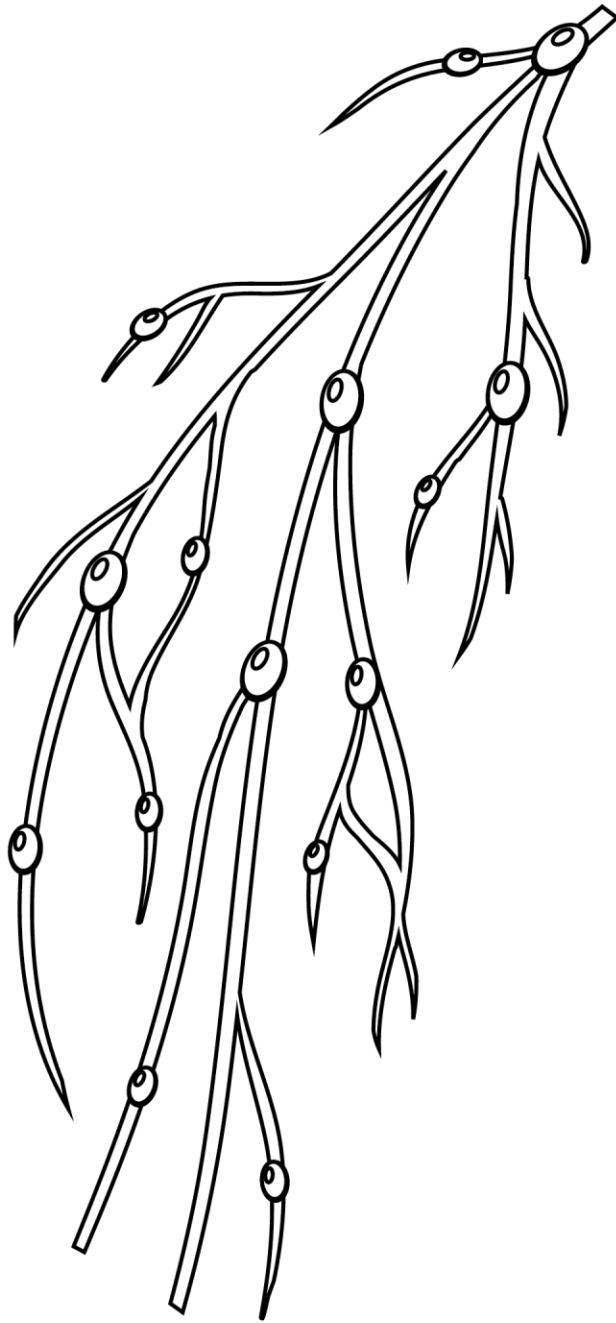
Liver



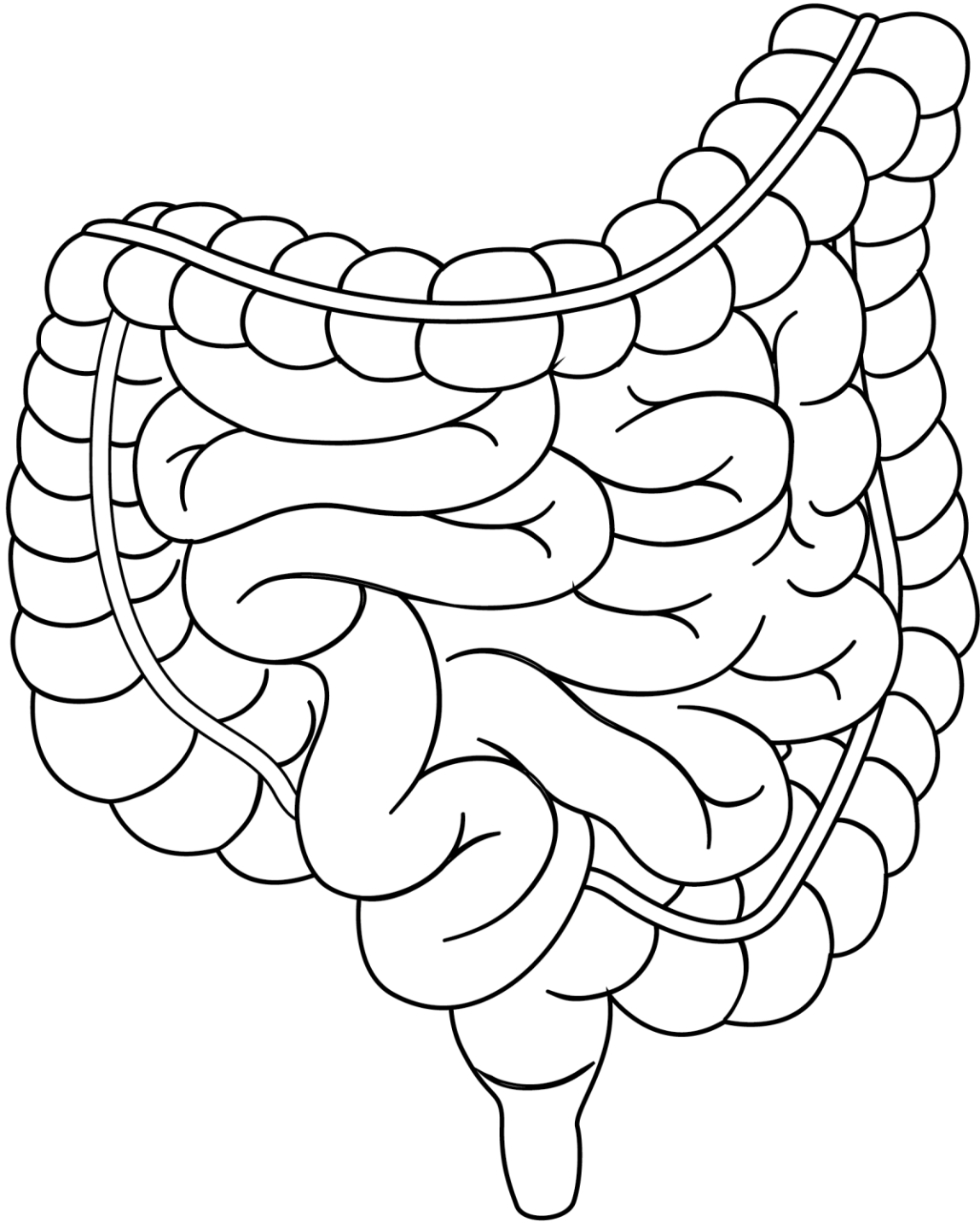
Kidneys



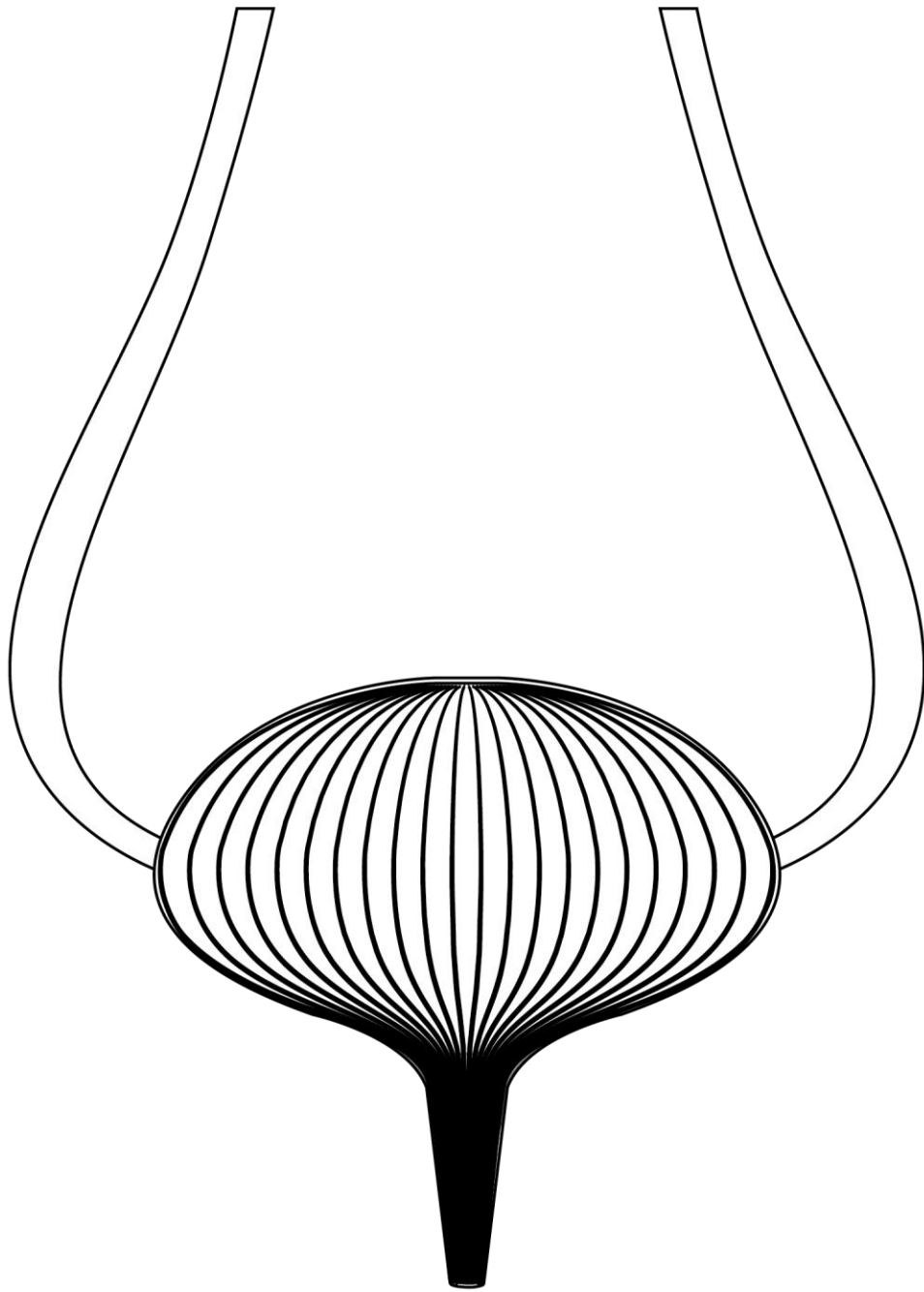
Heart



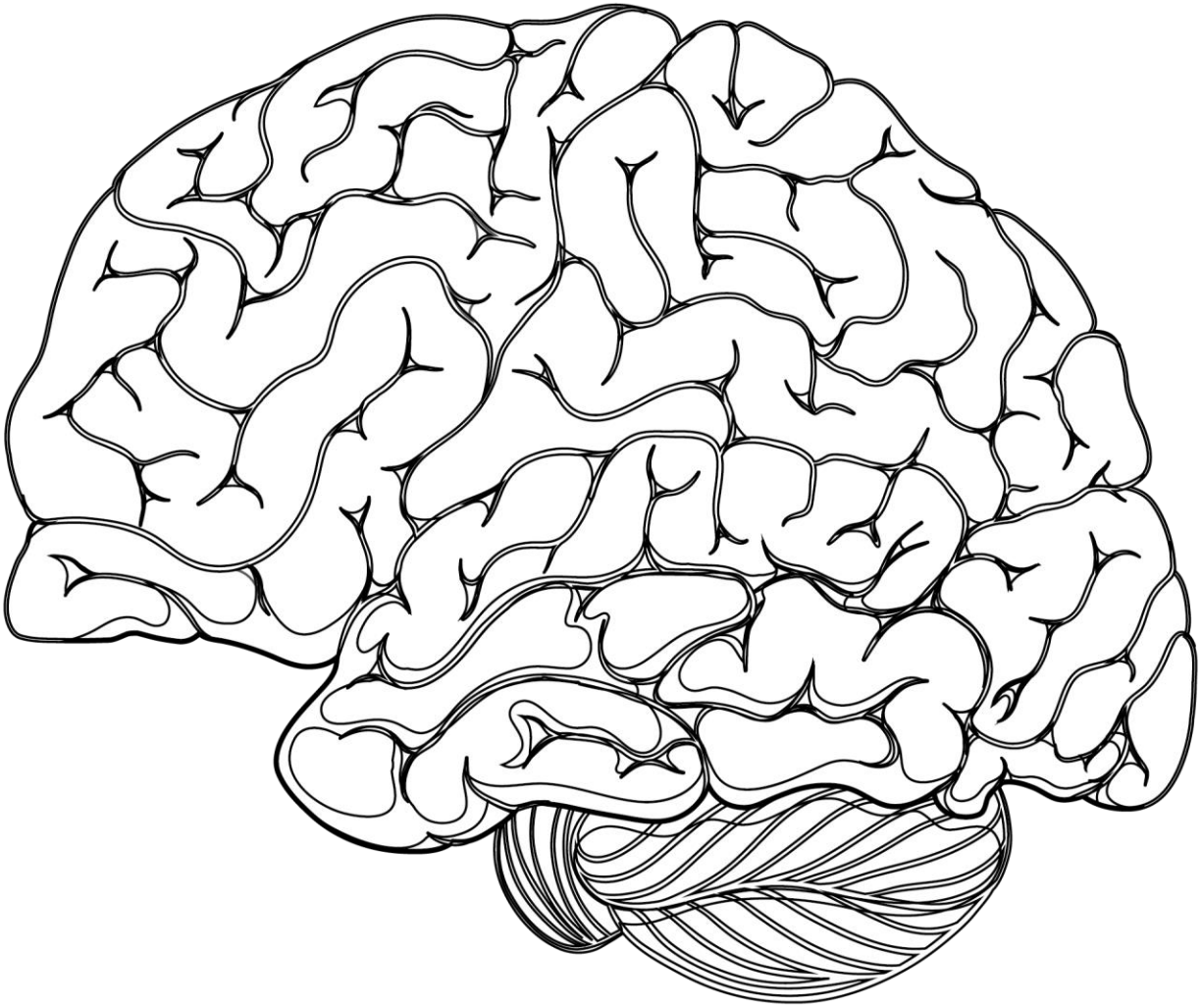
Lymph



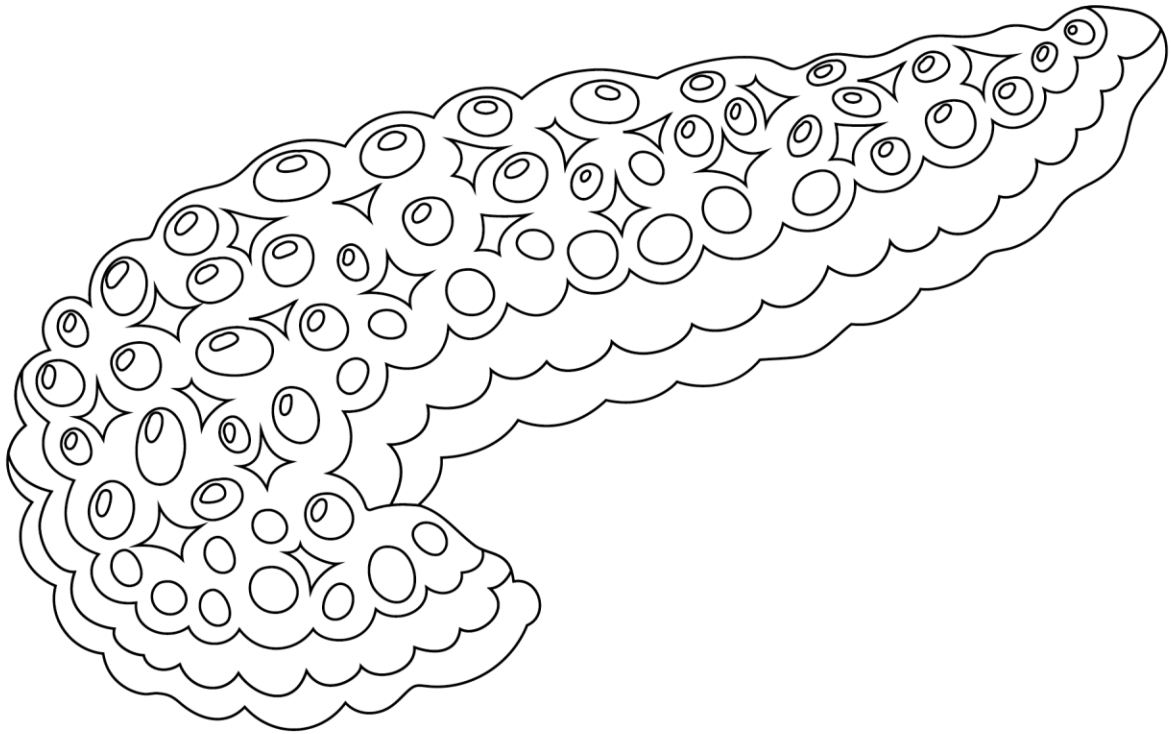
Small intestine



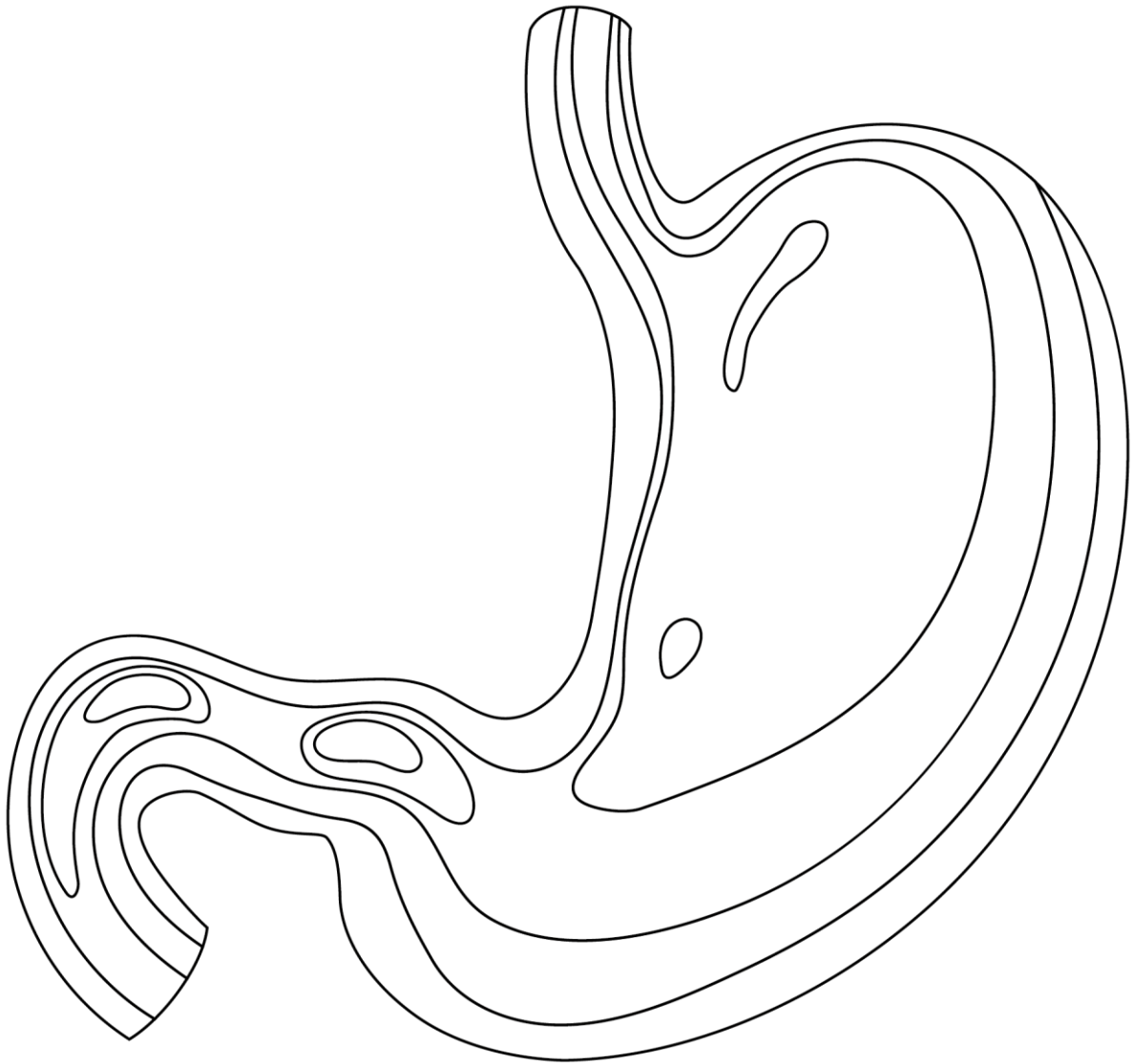
Bladder



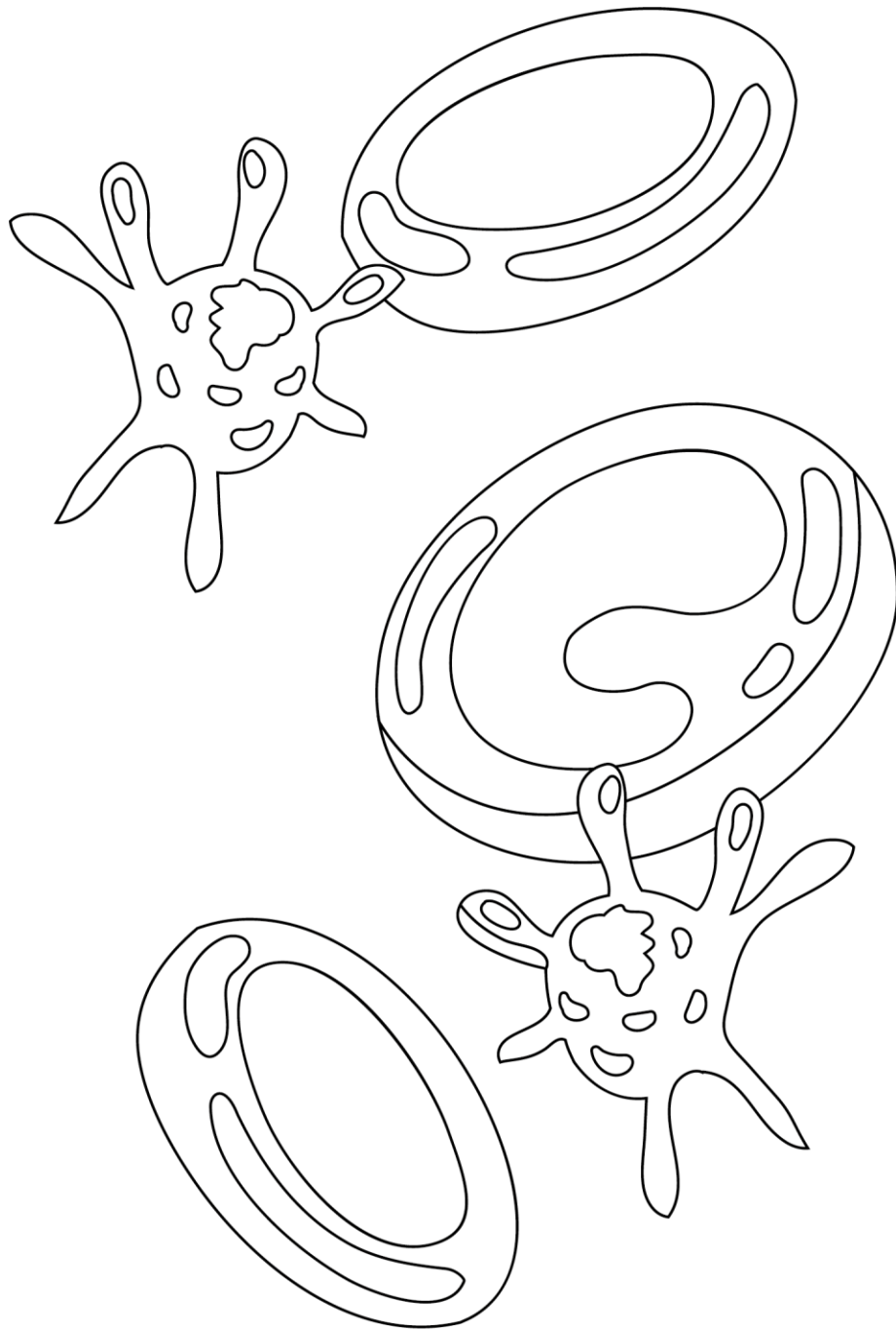
Brain



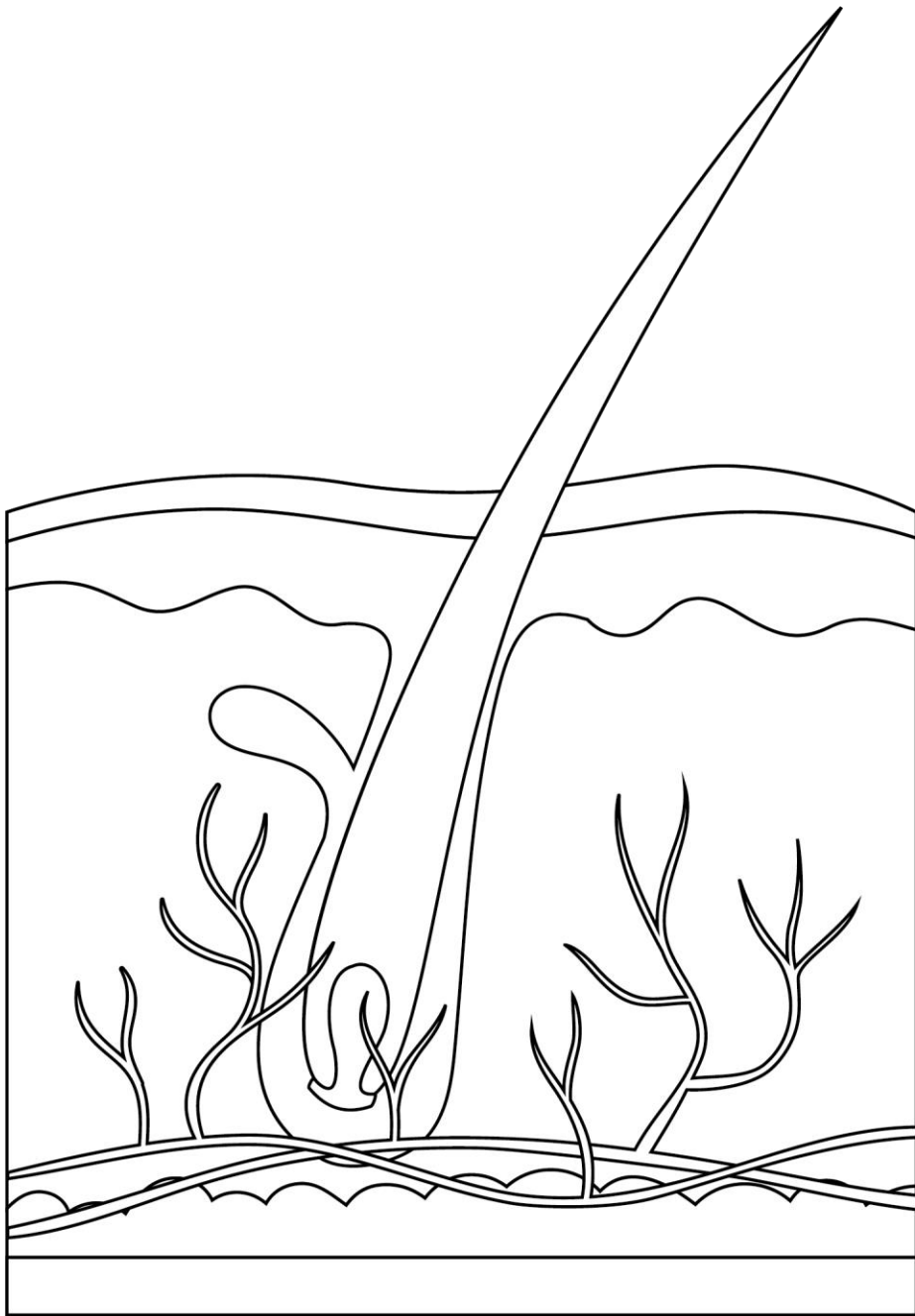
PANCREAS



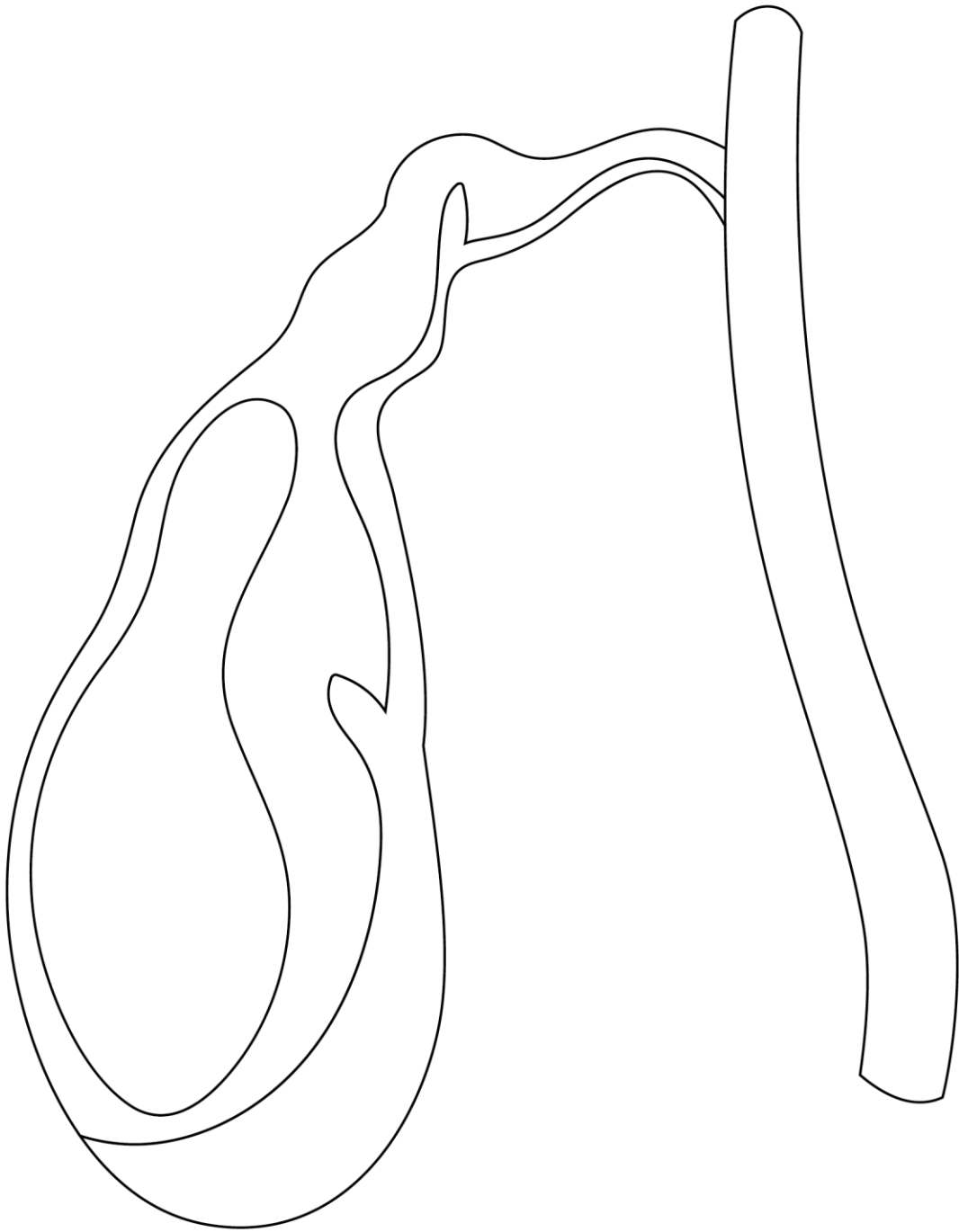
STOMACH



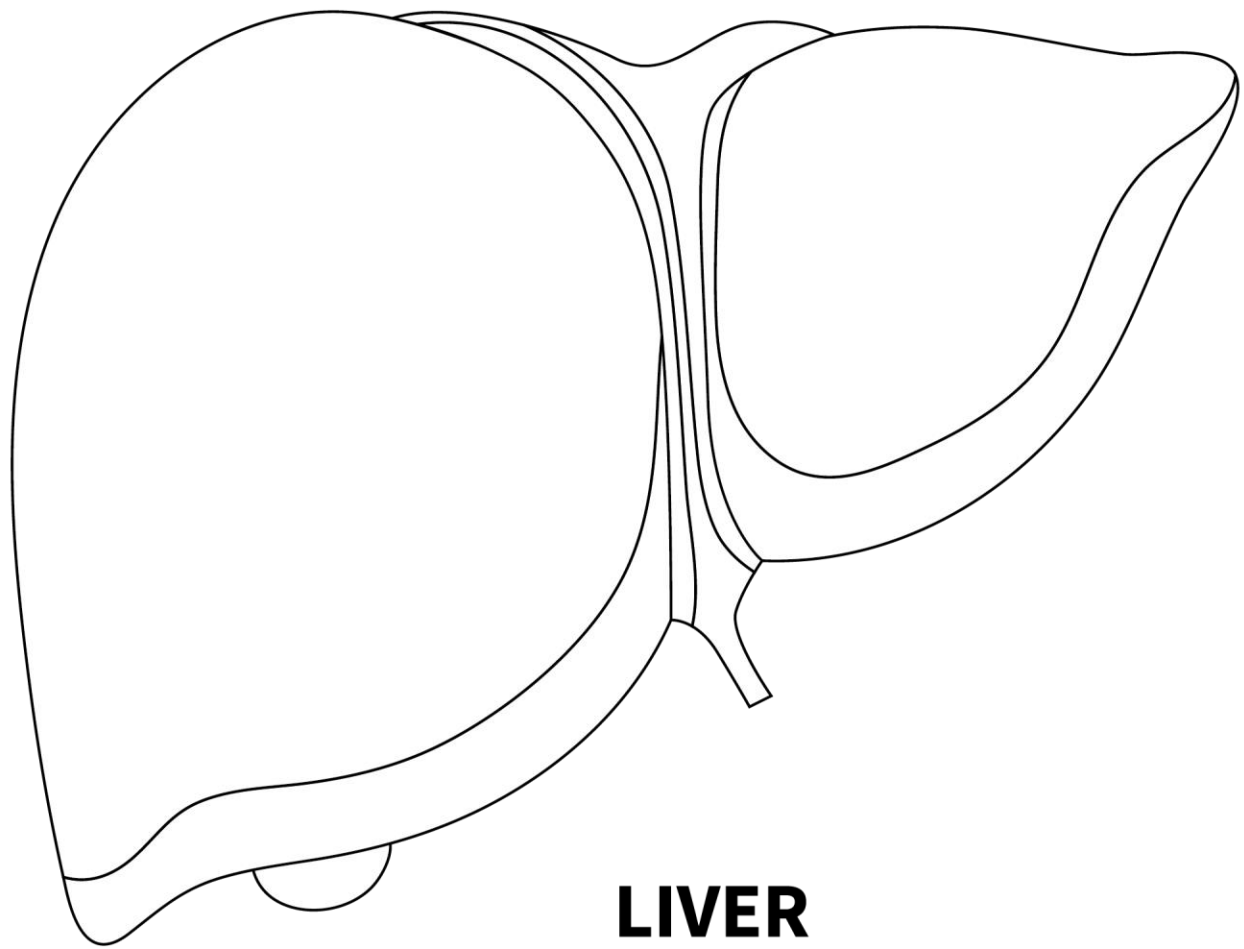
BLOOD



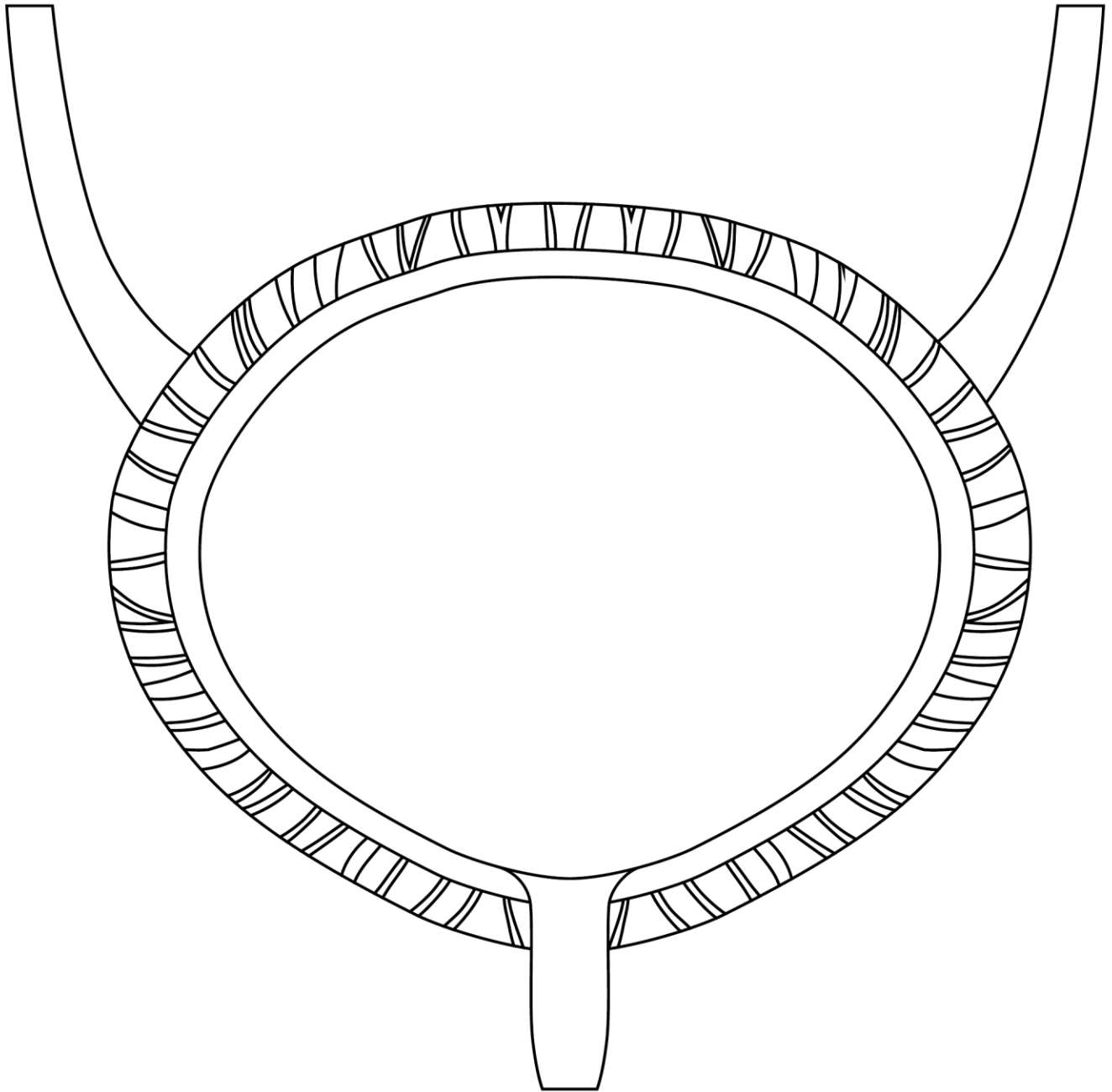
SKIN



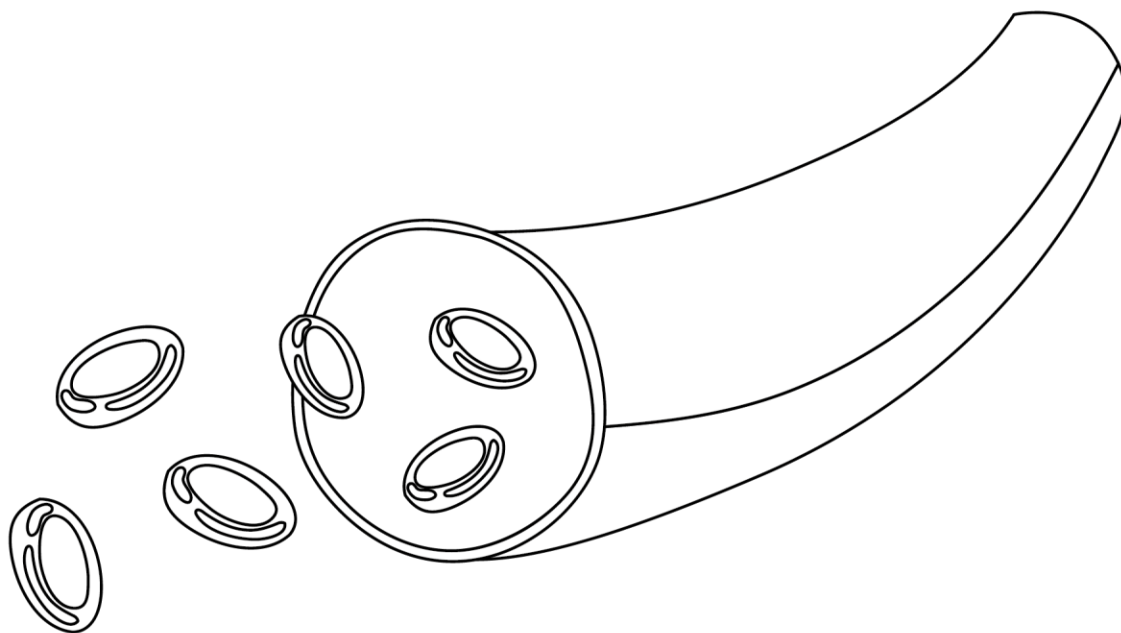
GALLBLADDER



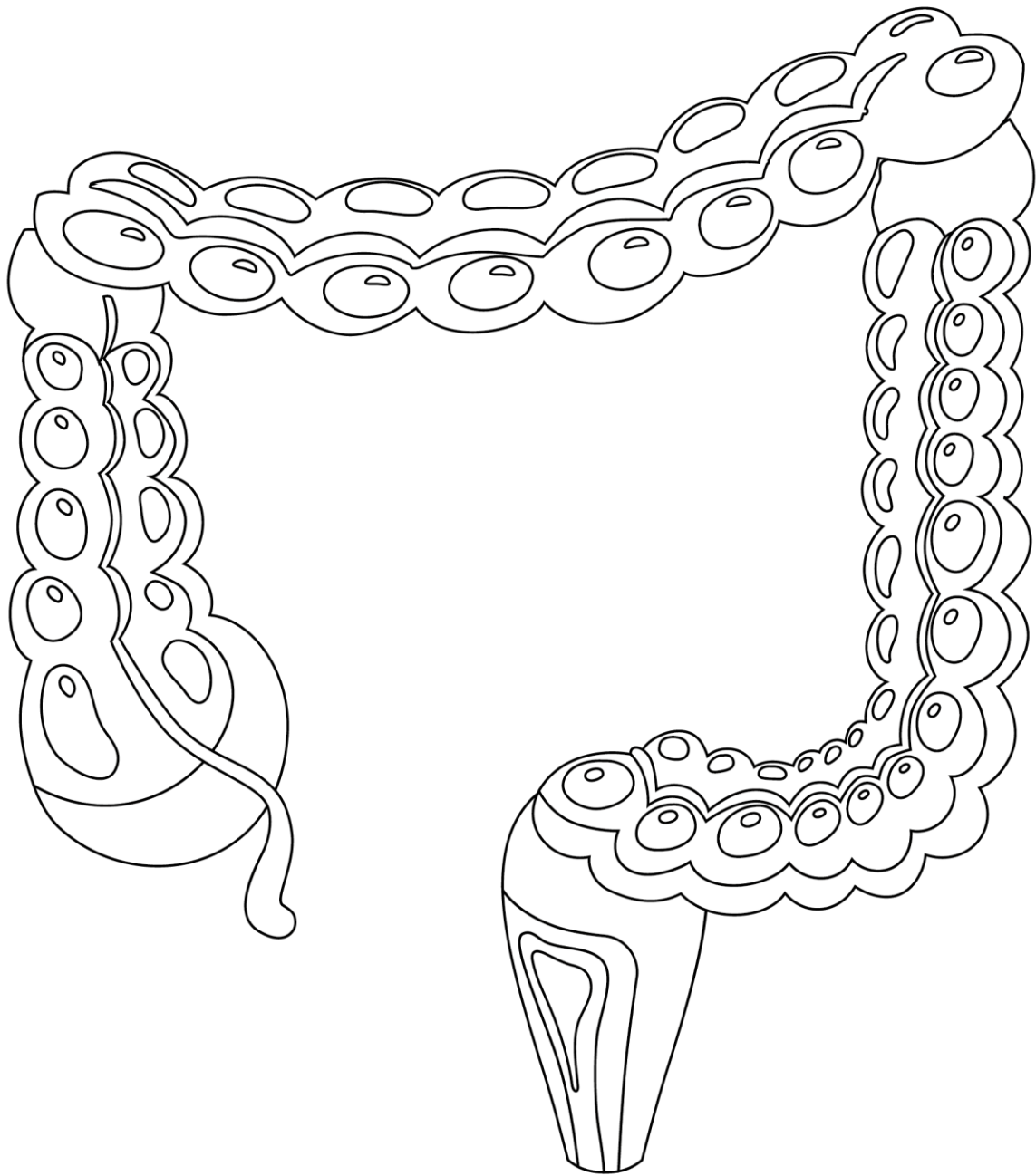
LIVER



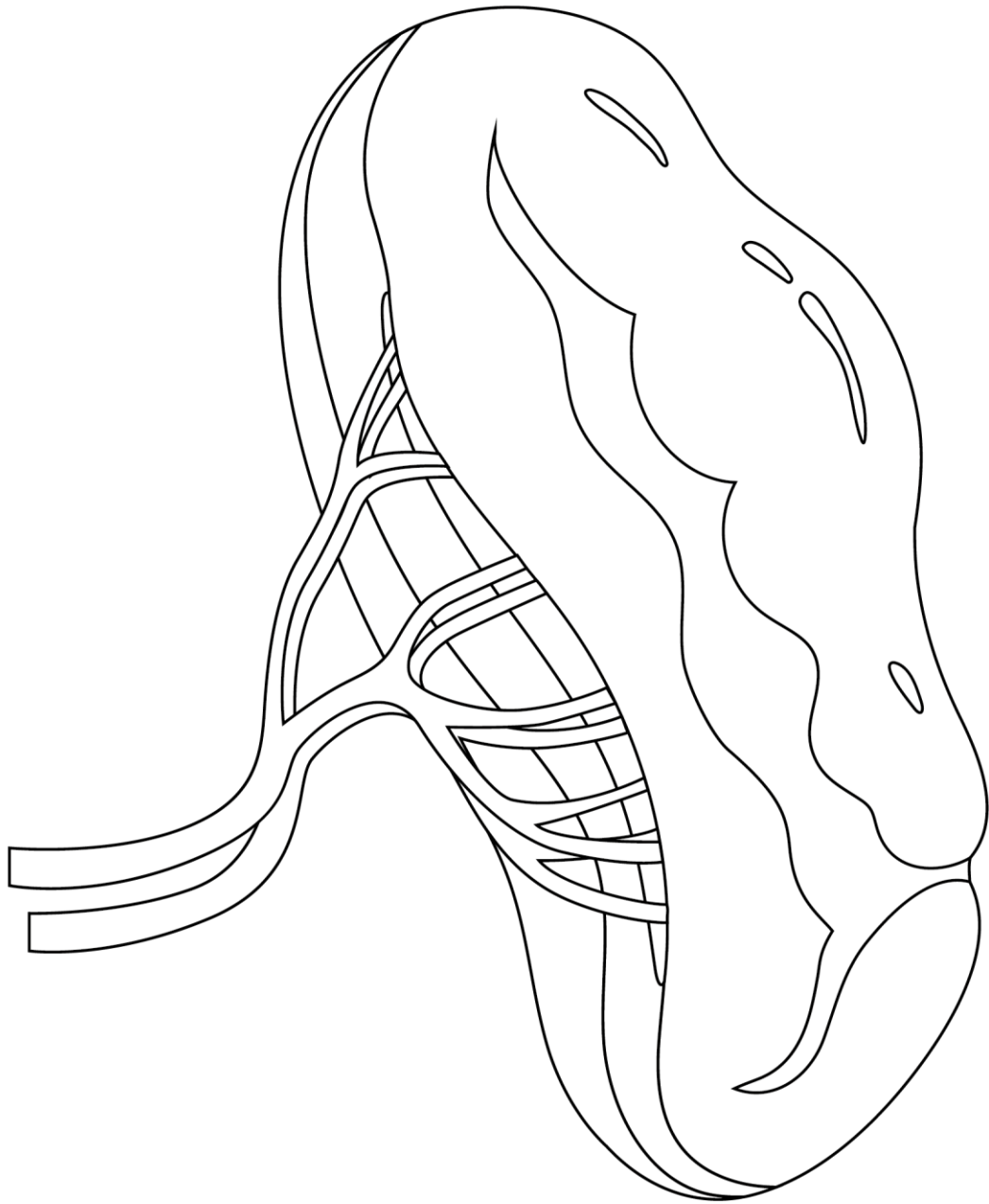
BLADDER



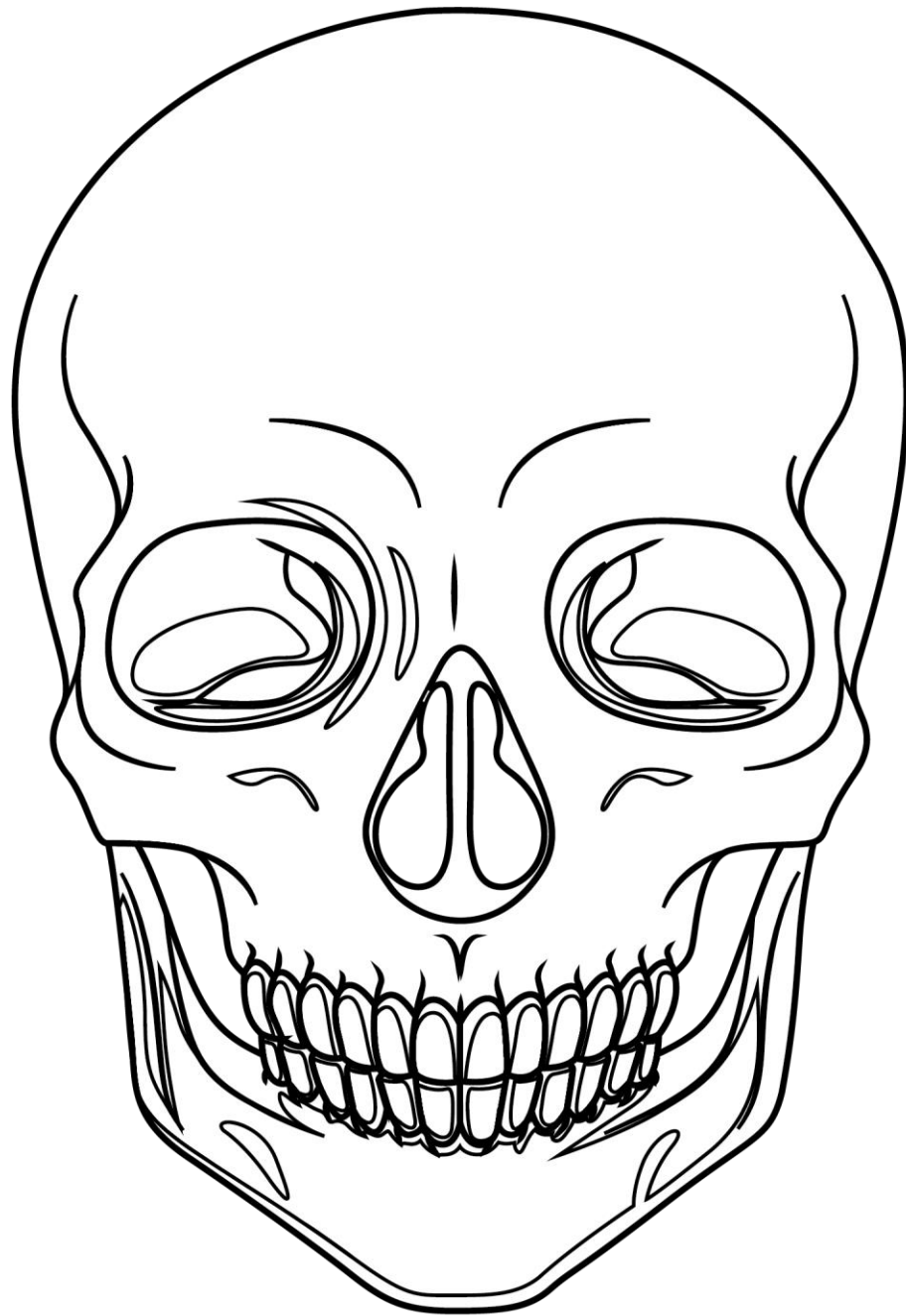
ARTERY



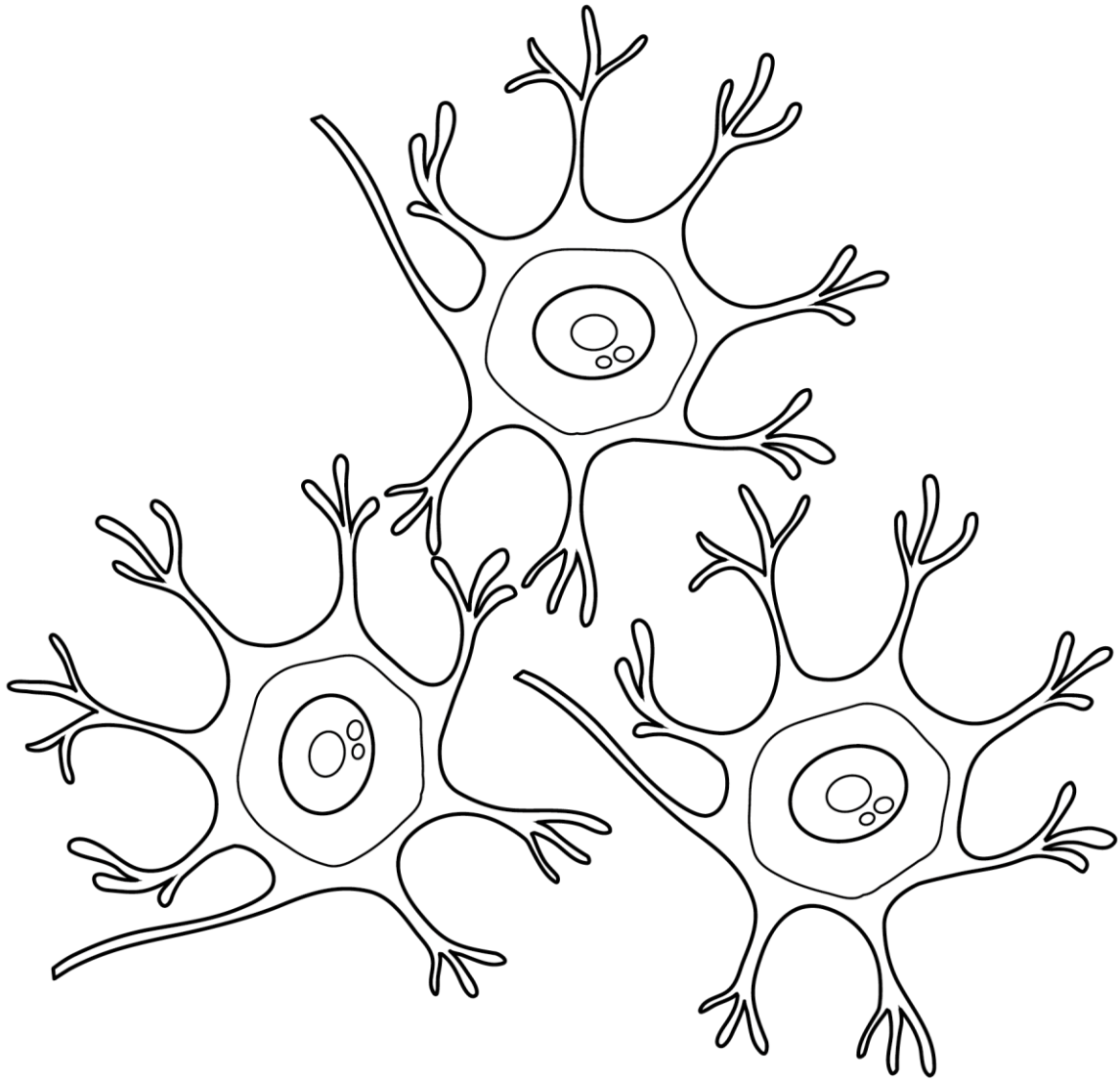
LARGE INTESTINE



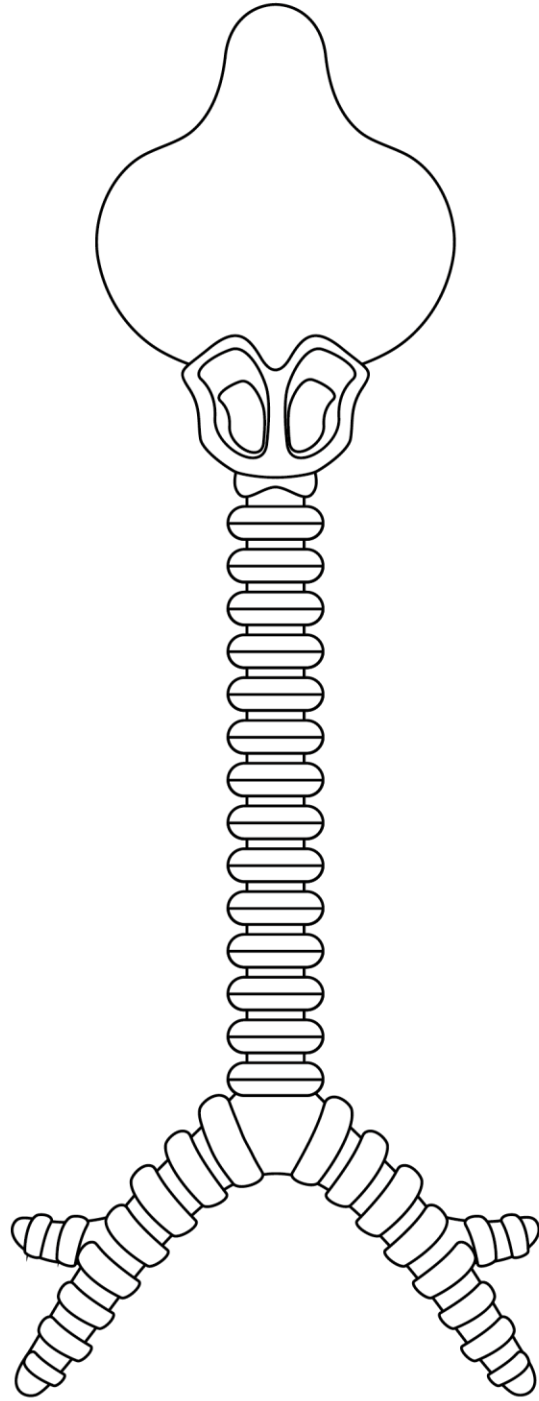
SPLEEN



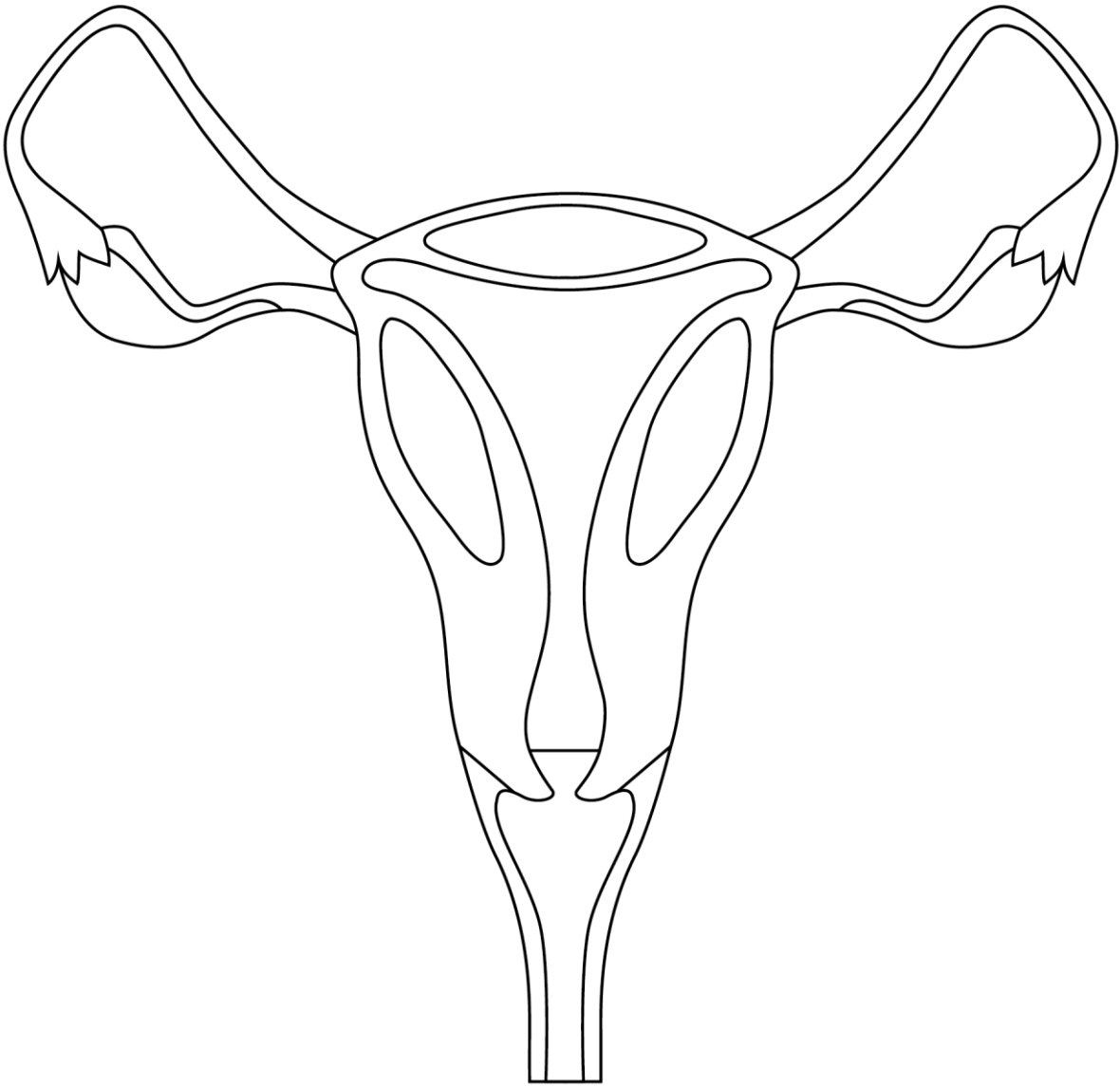
Skull



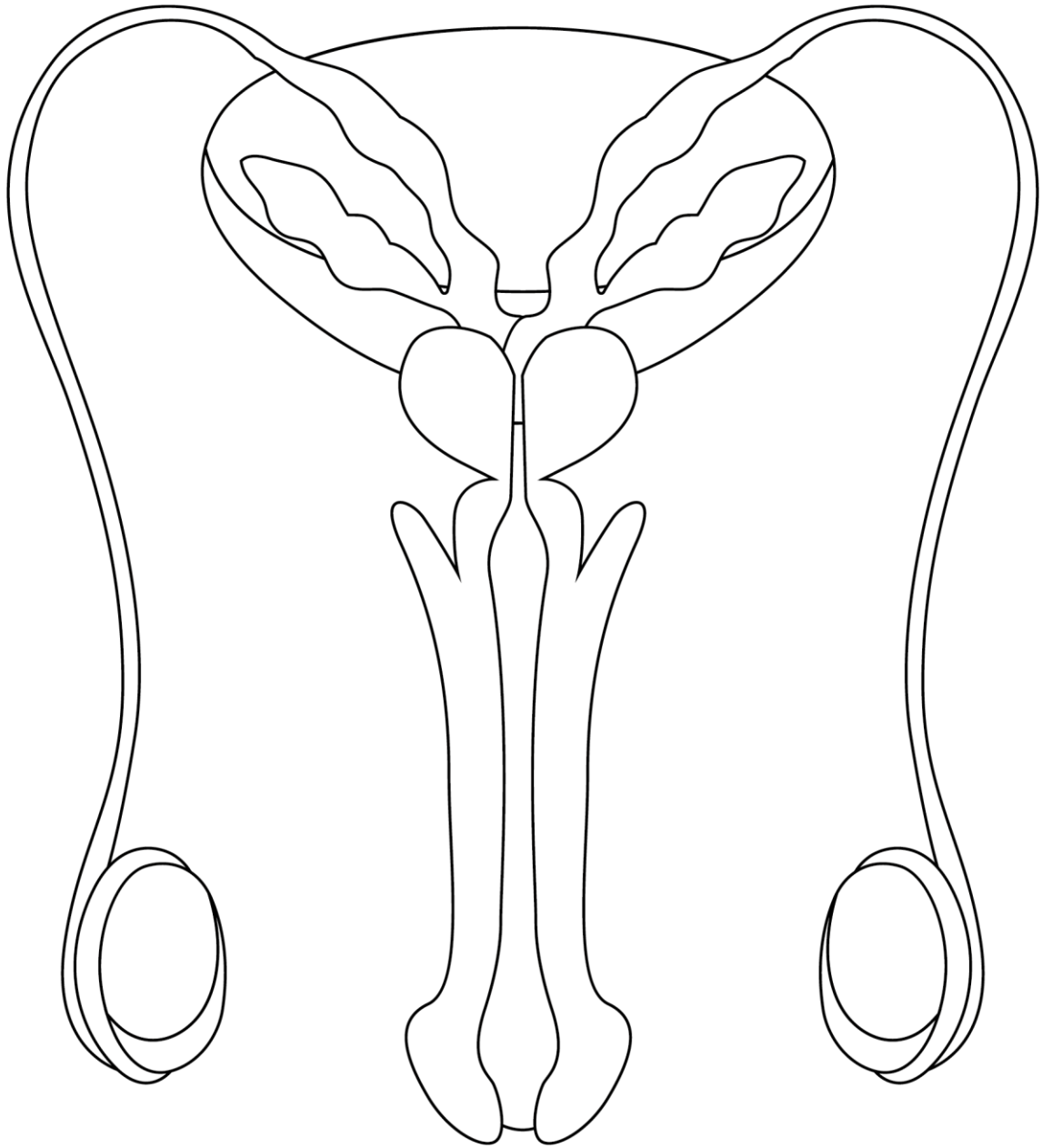
Neurons



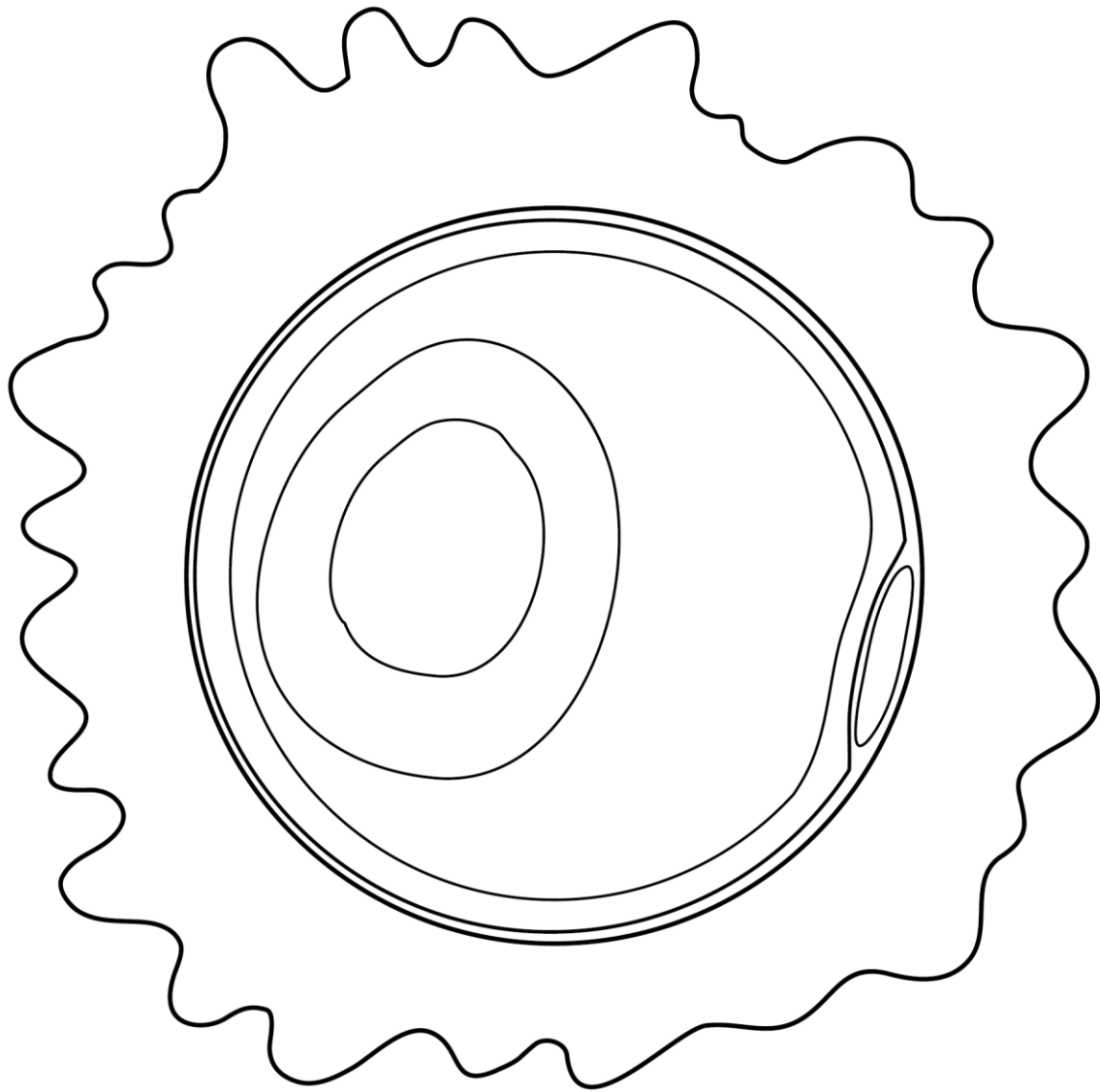
Oesophagus



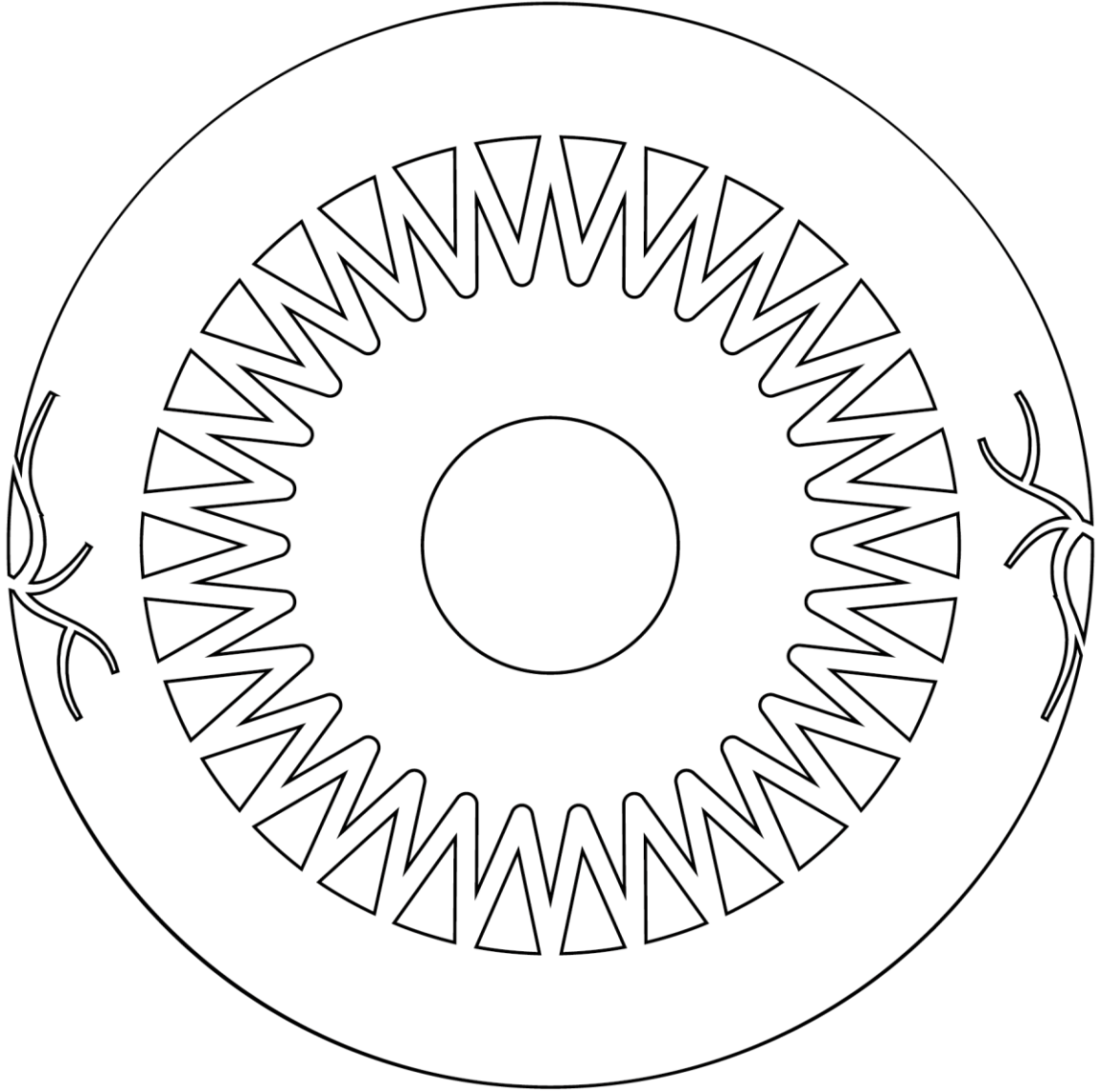
**FEMALE
REPRODUCTIVE
SYSTEM**



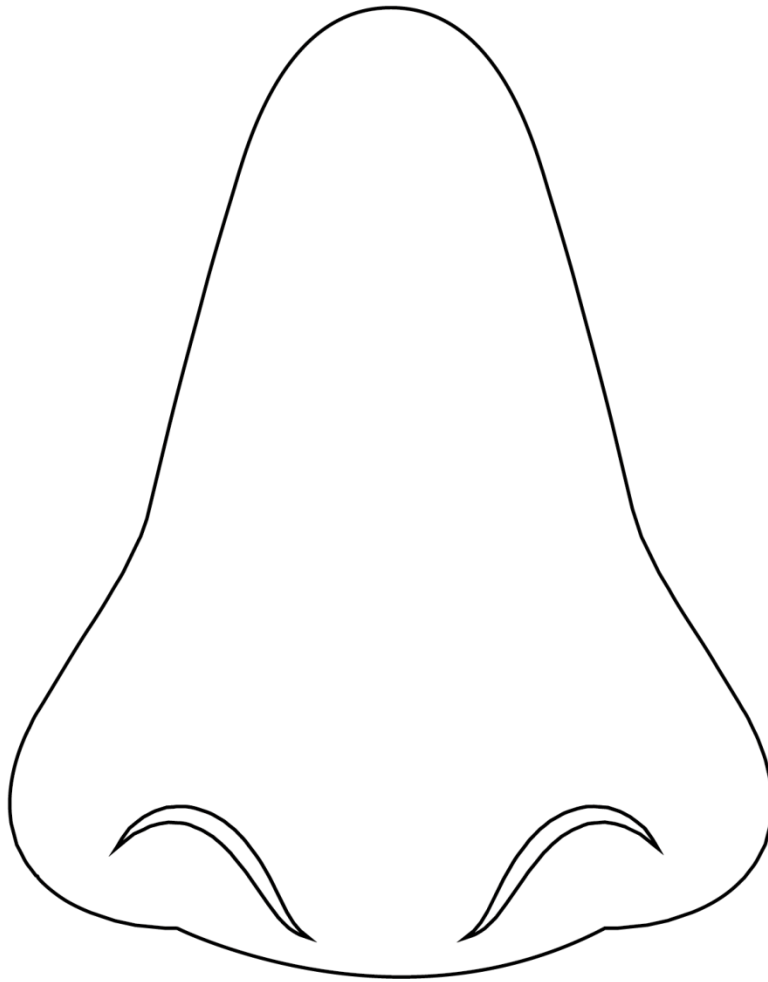
**MALE
REPRODUCTIVE
SYSTEM**



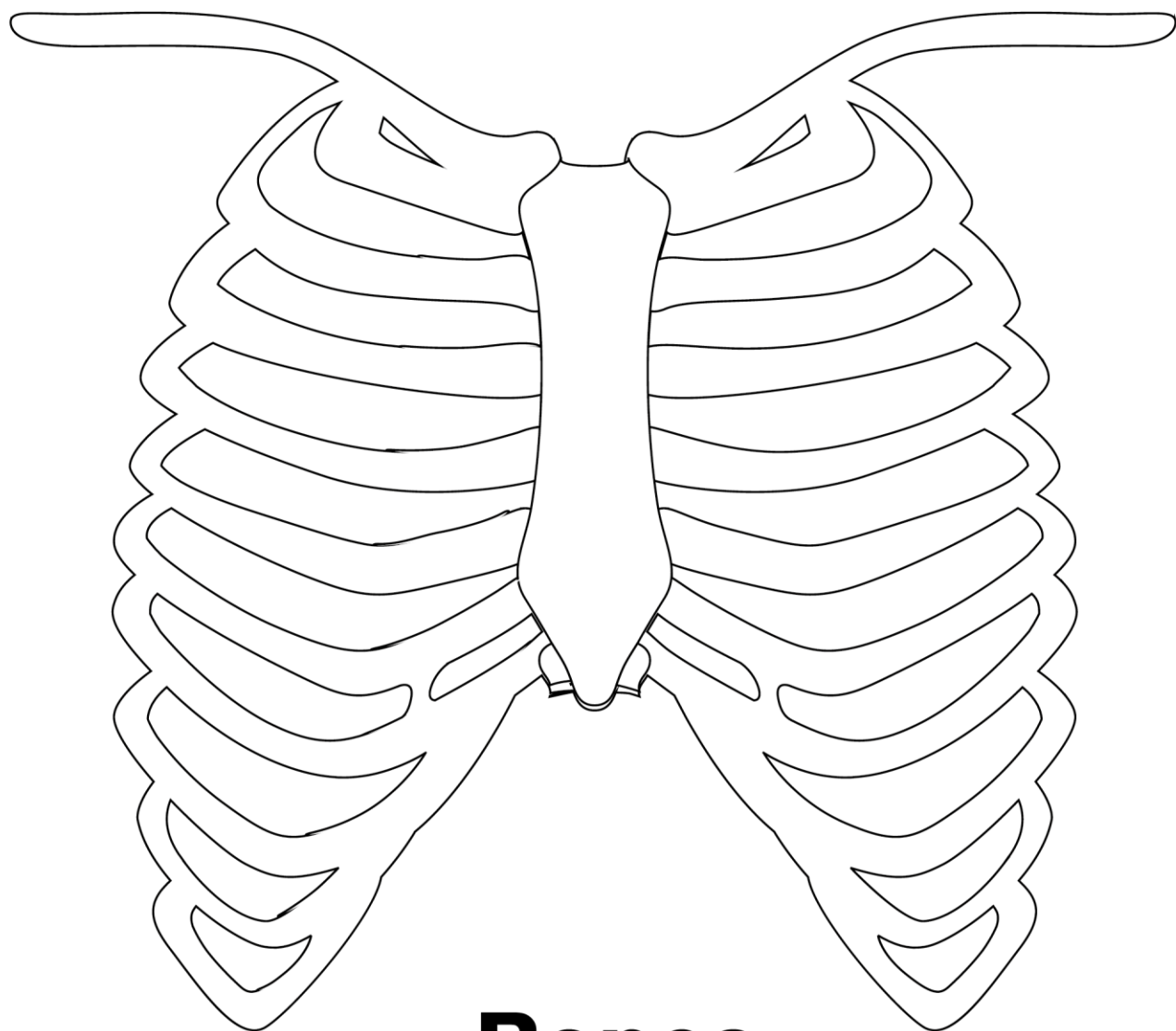
Ovum



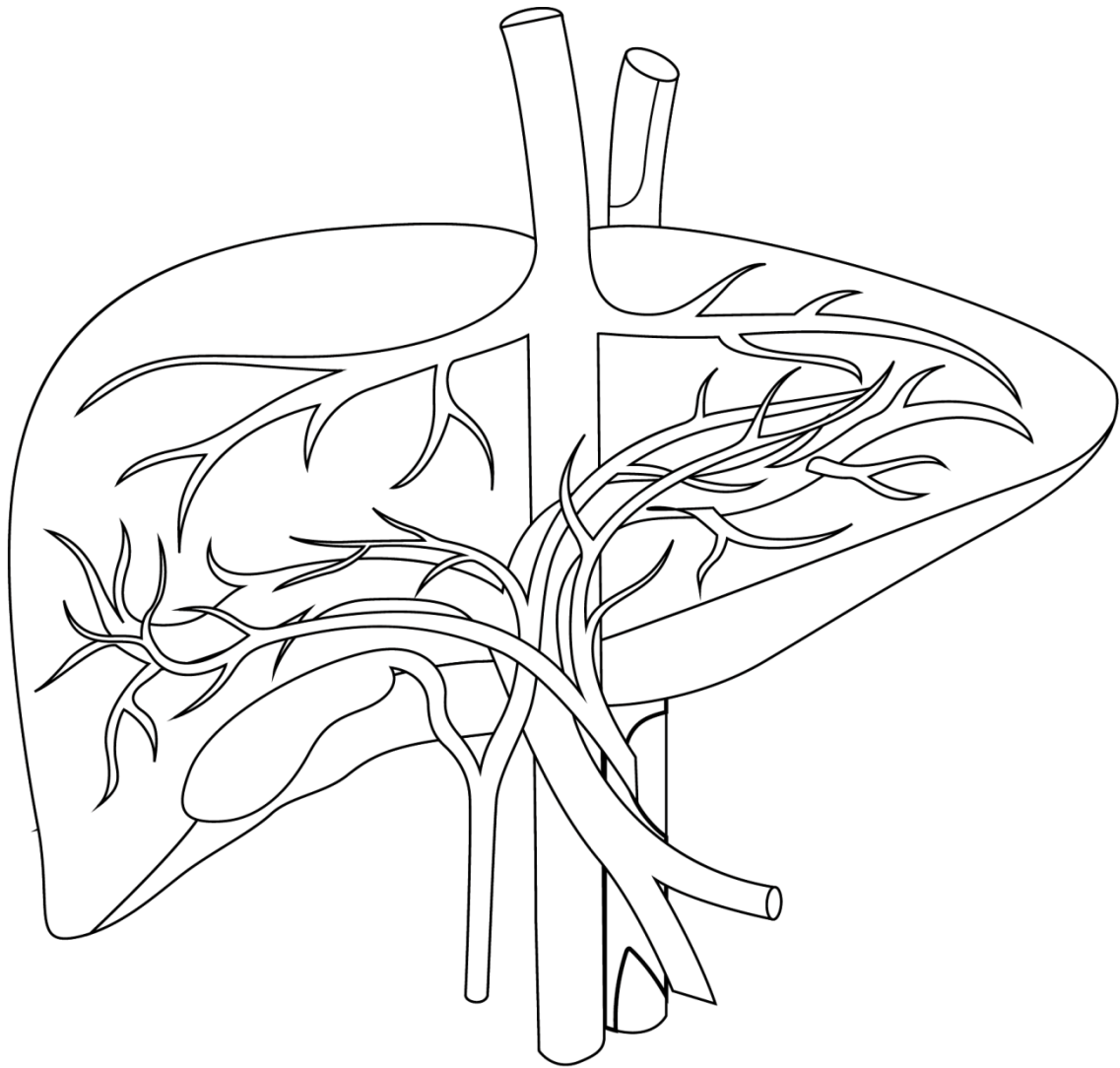
SPINE

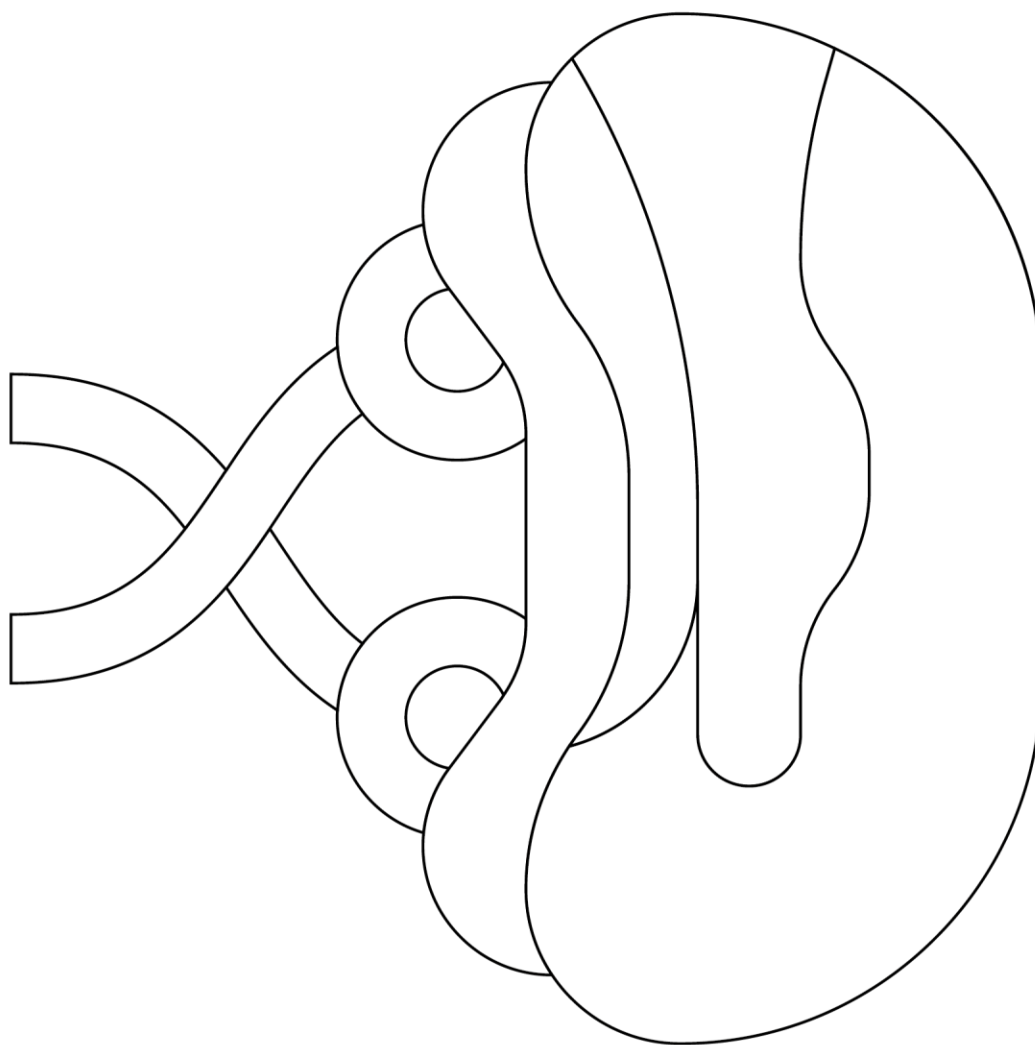


Nose

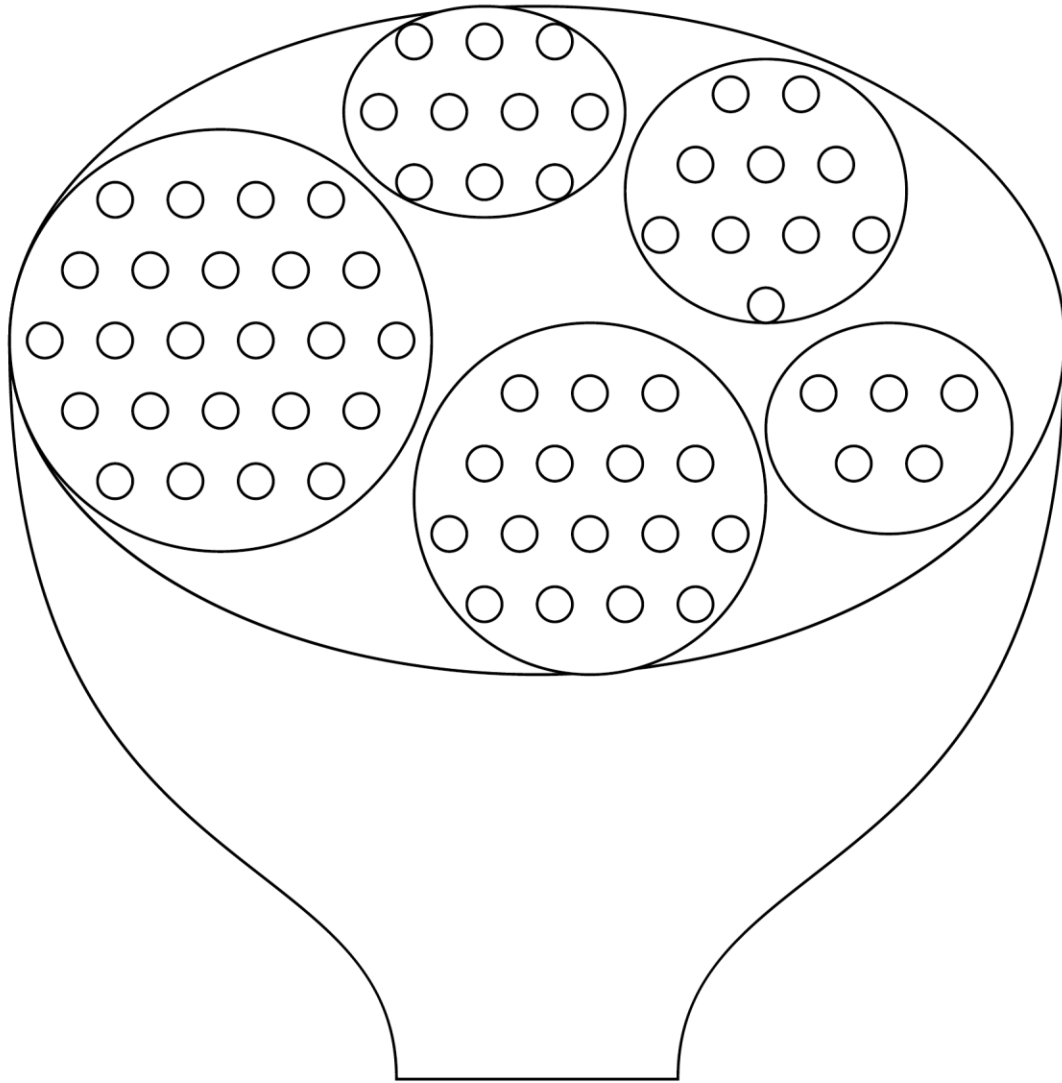


Bones

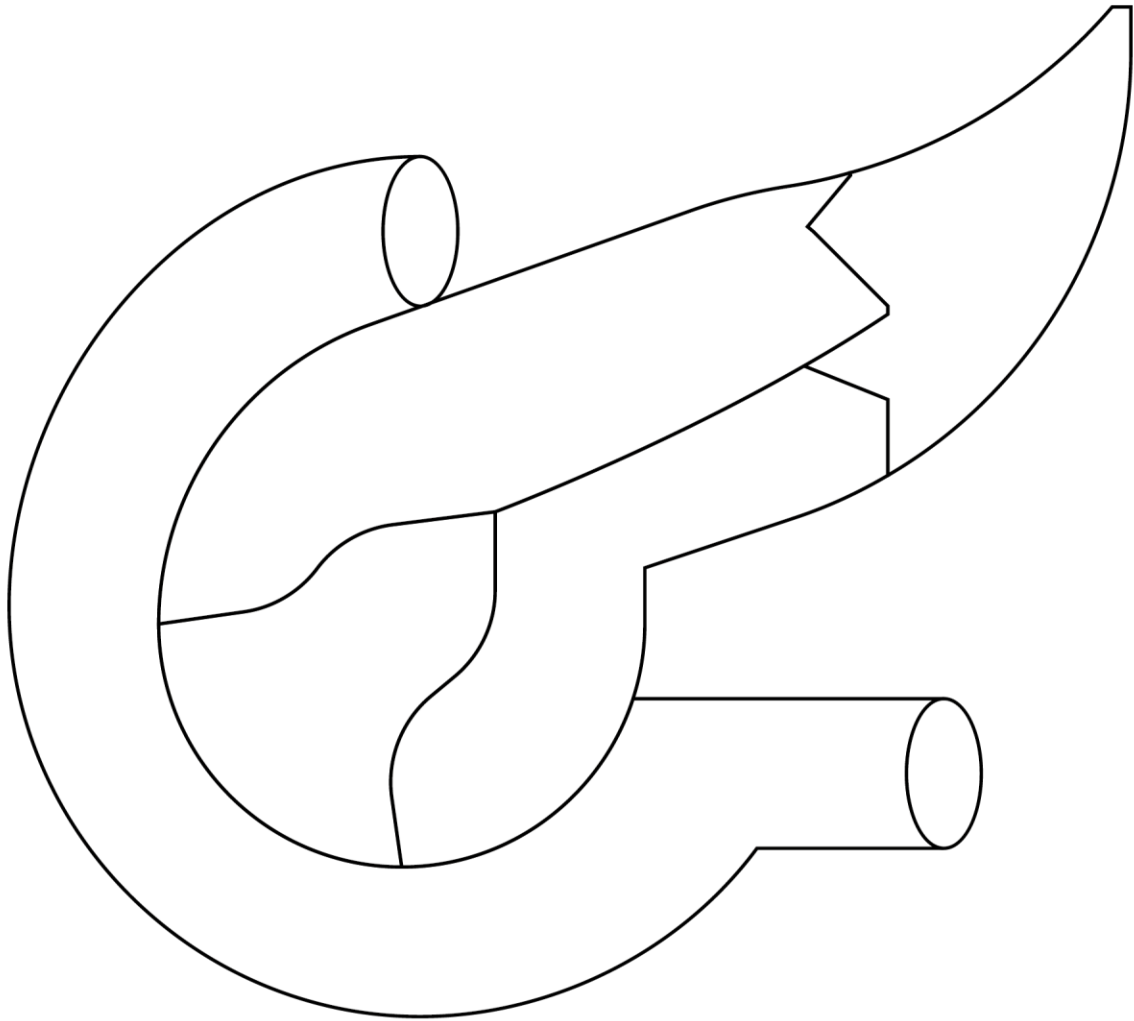




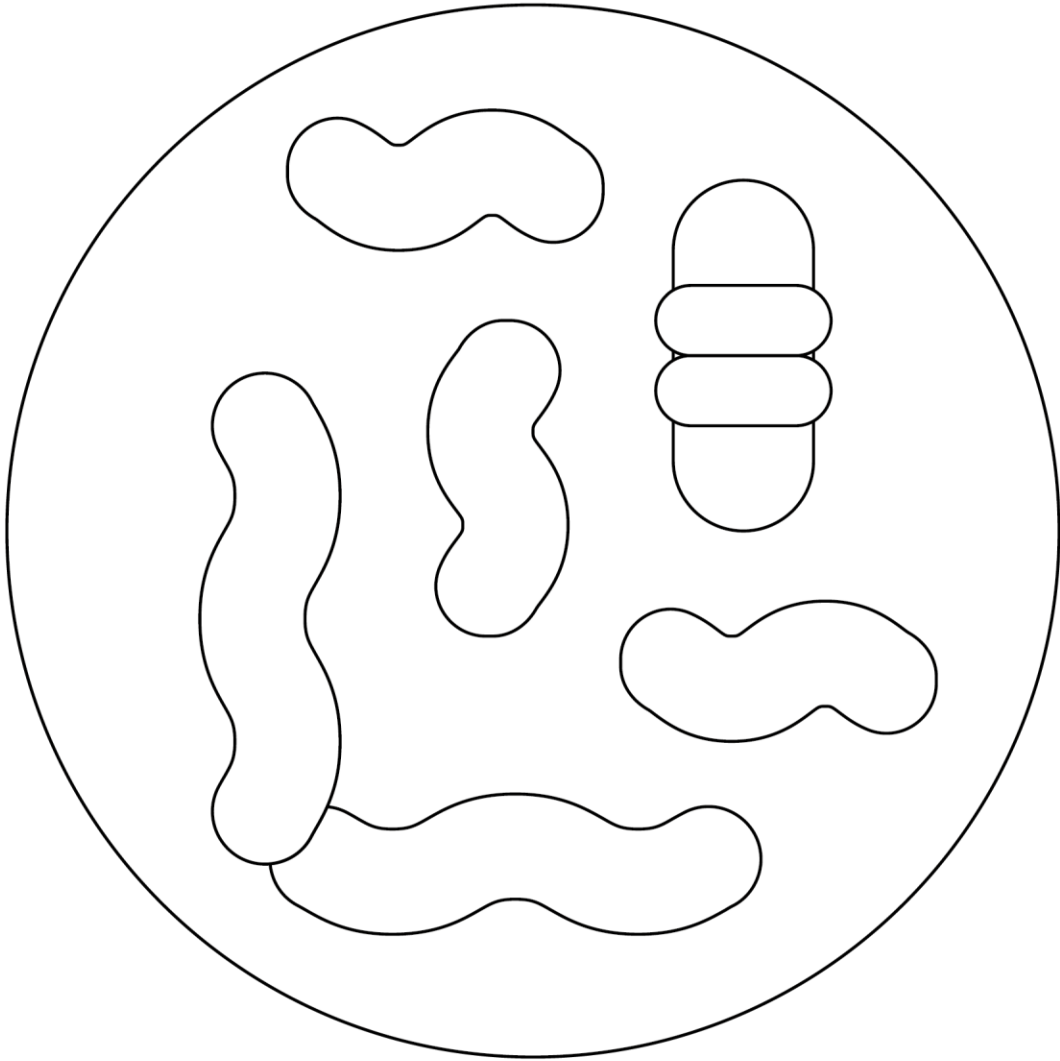
SPLEEN



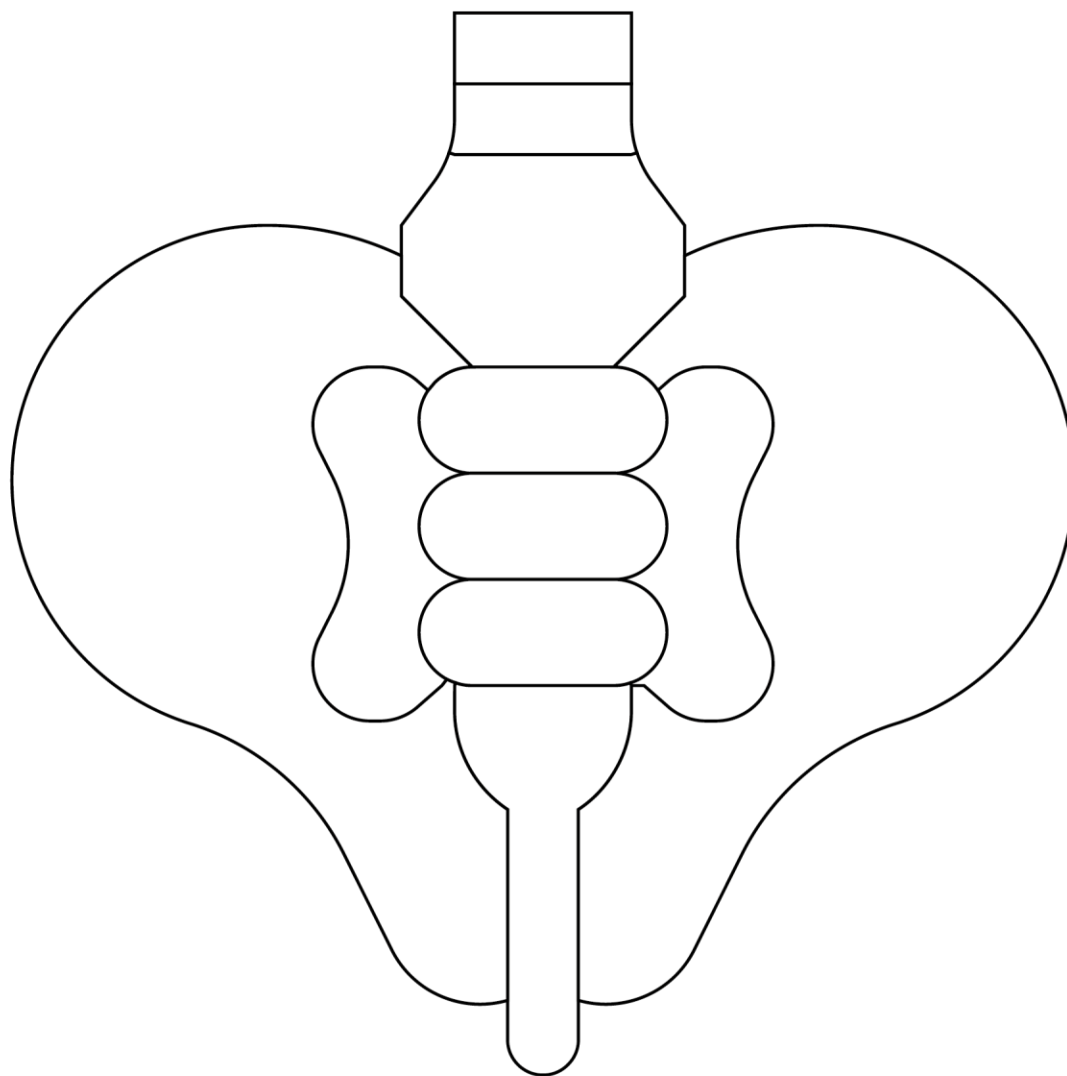
MUSCLE



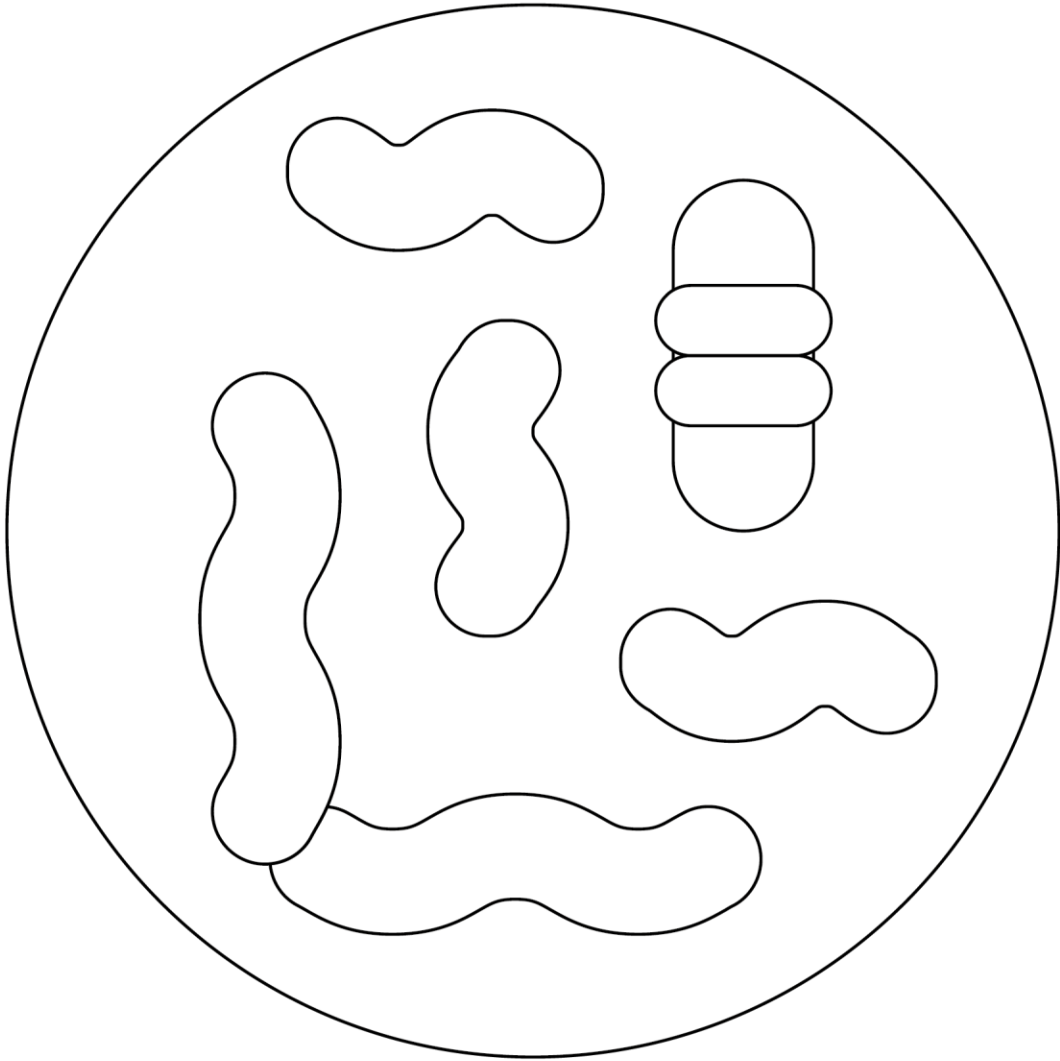
PANCREAS



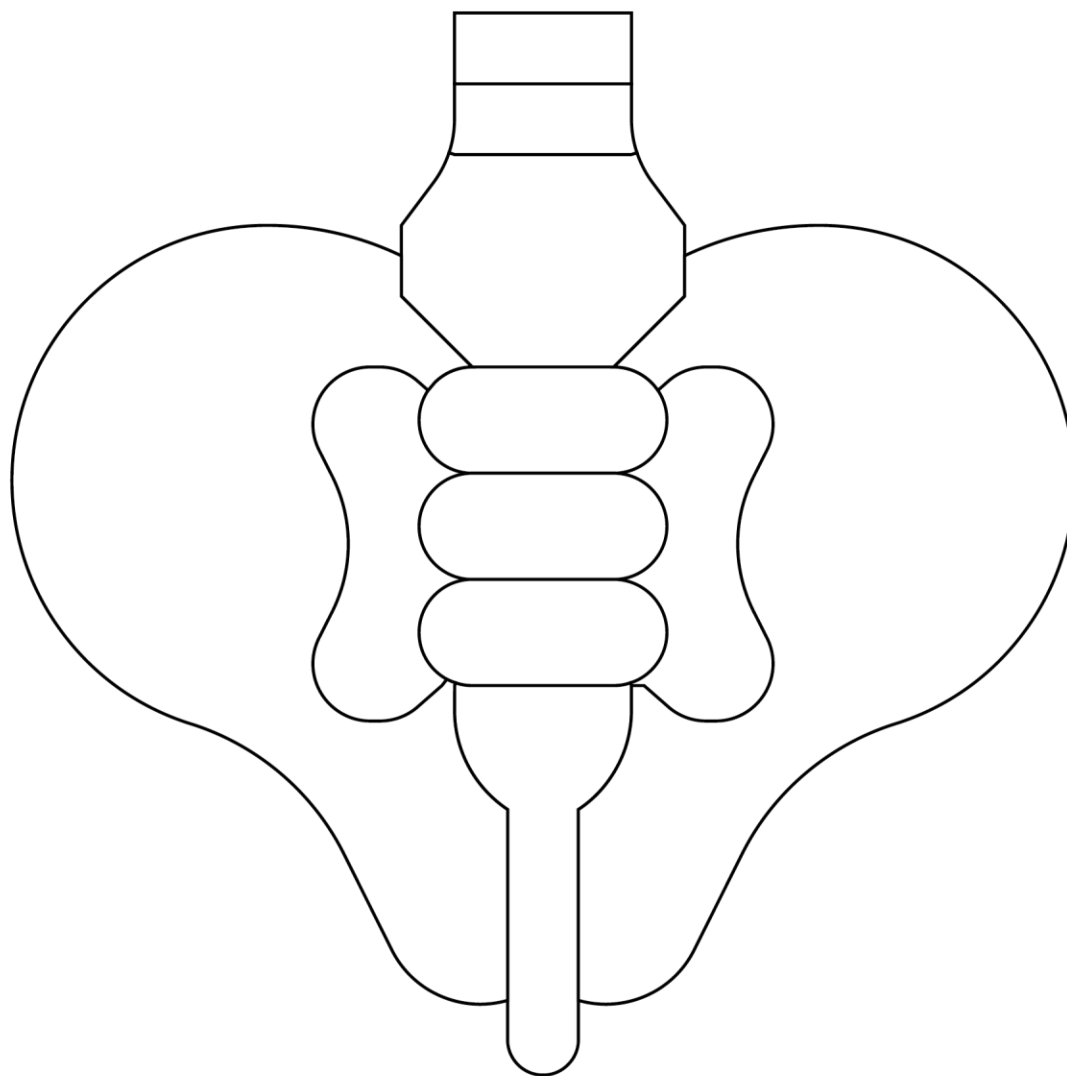
PROBIOTIC



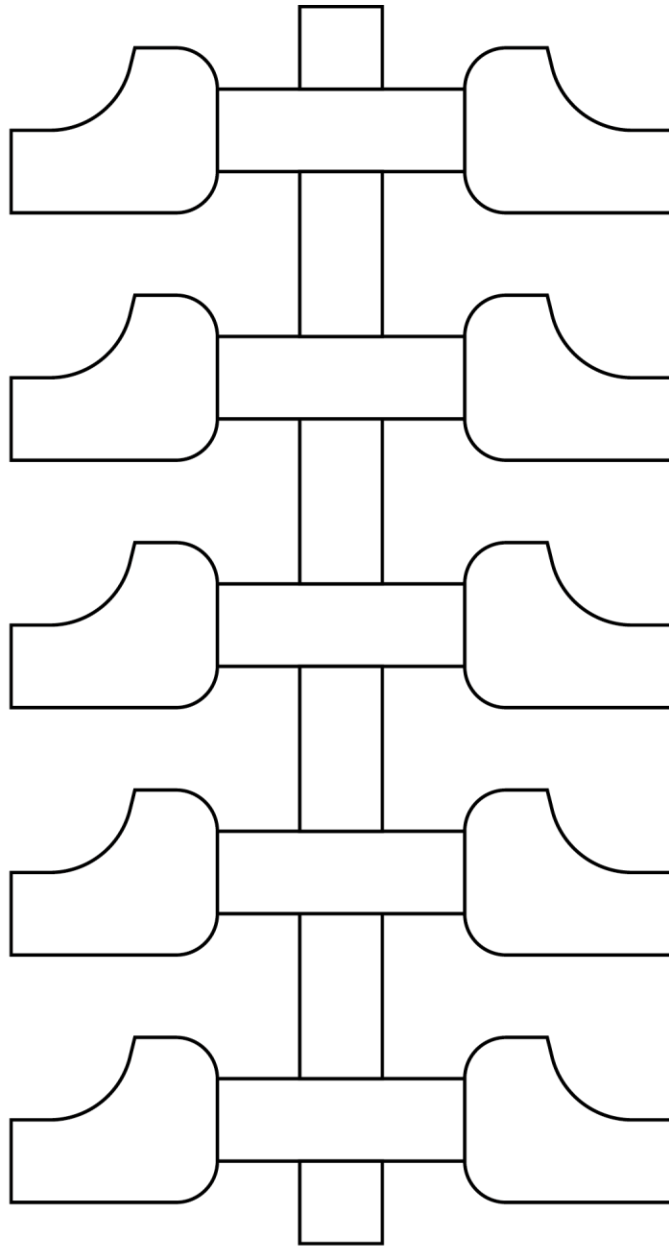
PELVIS



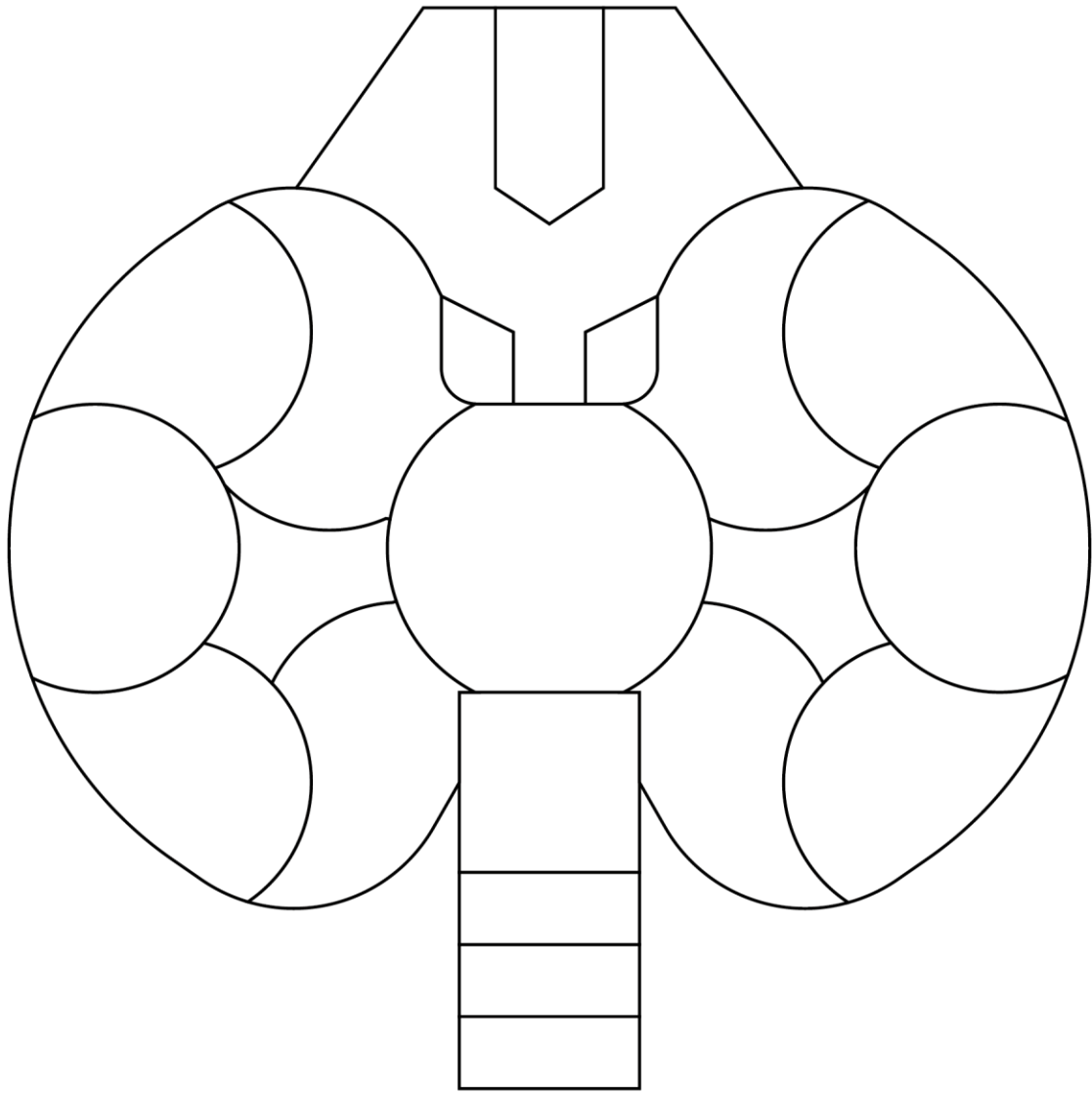
PROBIOTIC



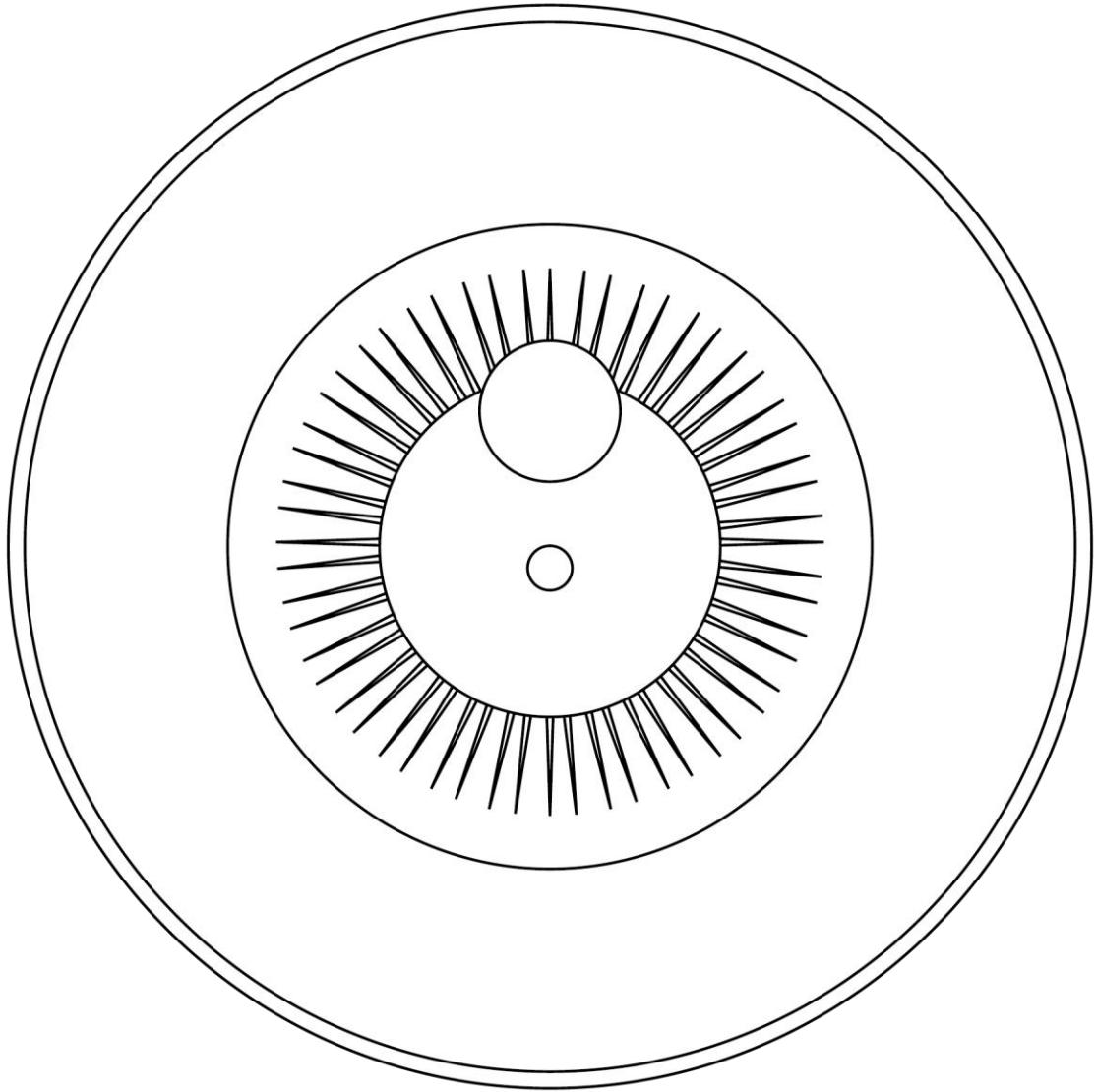
PELVIS



SPINE



THYROID



Eye

