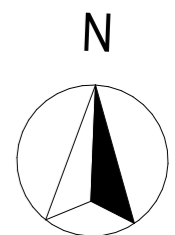
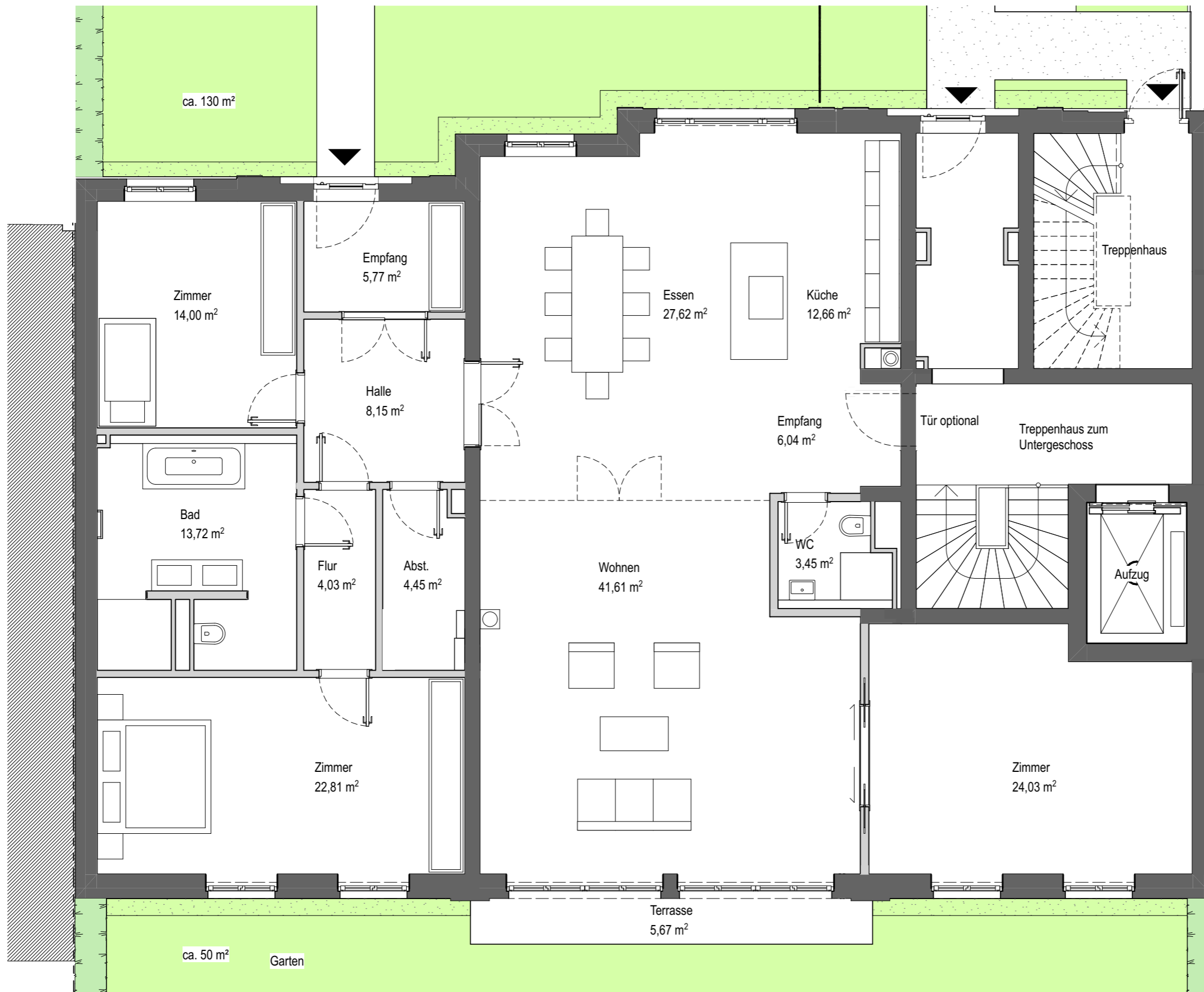


Wohnung 1

Wohnfläche gem. WoFIV
191,18 qm
(Terrasse zu 50%)



Oberstraße 138

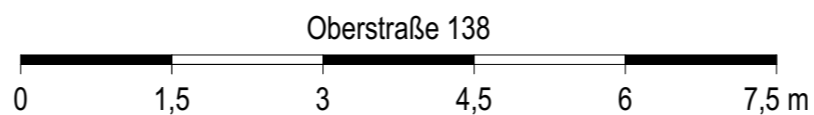
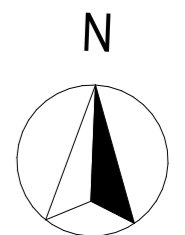


Maßstab 1:75 (1 cm x 0,75 = reale Länge in Meter)

Grundriss Erdgeschoss - Wohnung 1



Wohnung 1
 Variante 1
 Wohnfläche gem. WoFIV
 191,60 qm
 (Terrasse zu 50%)



Maßstab 1:75 (1 cm x 0,75 = reale Länge in Meter)

Variante 1
 Grundriss Erdgeschoss - Wohnung 1