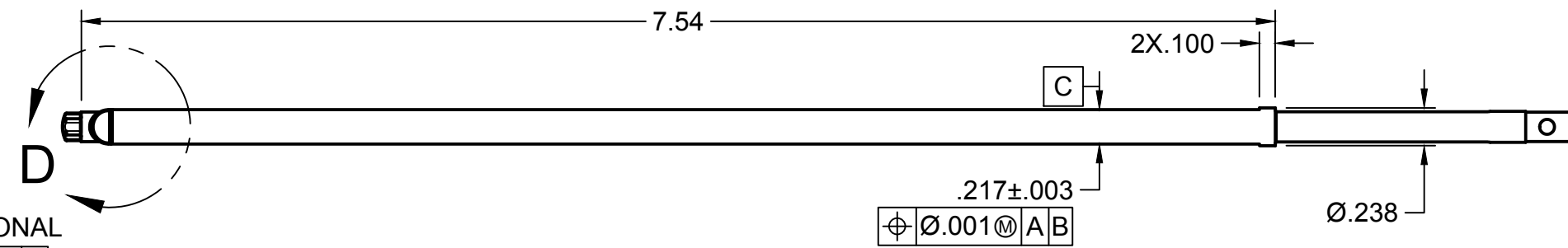
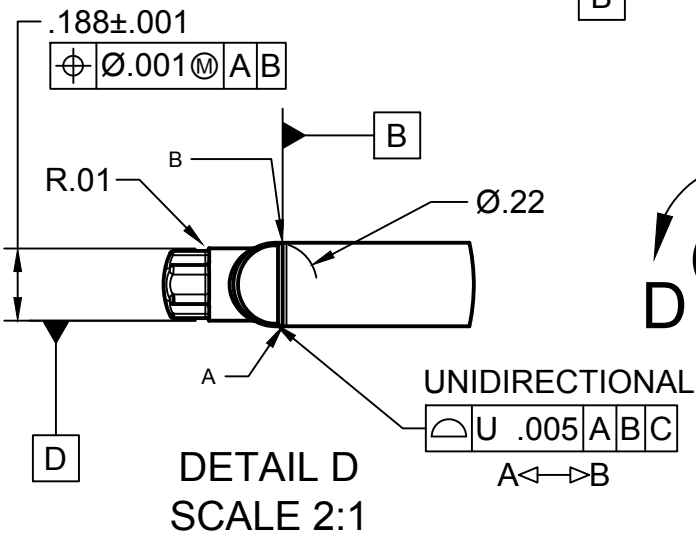
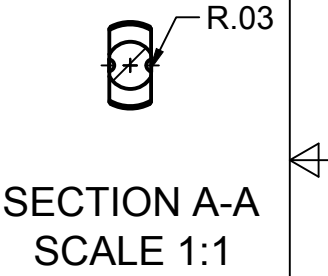
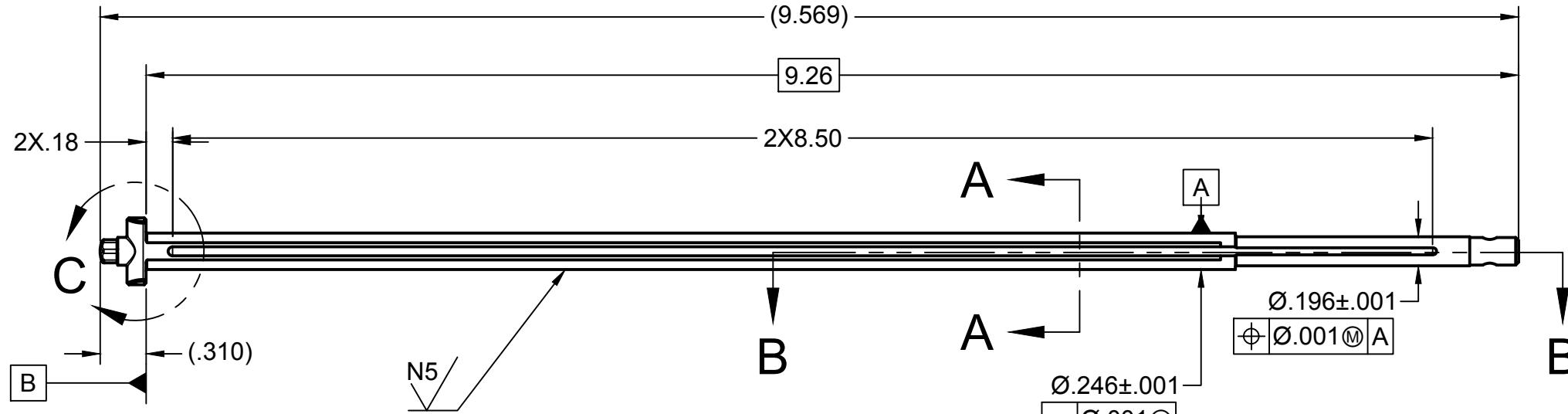
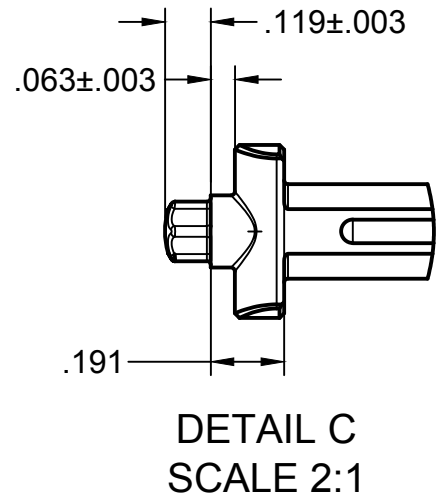
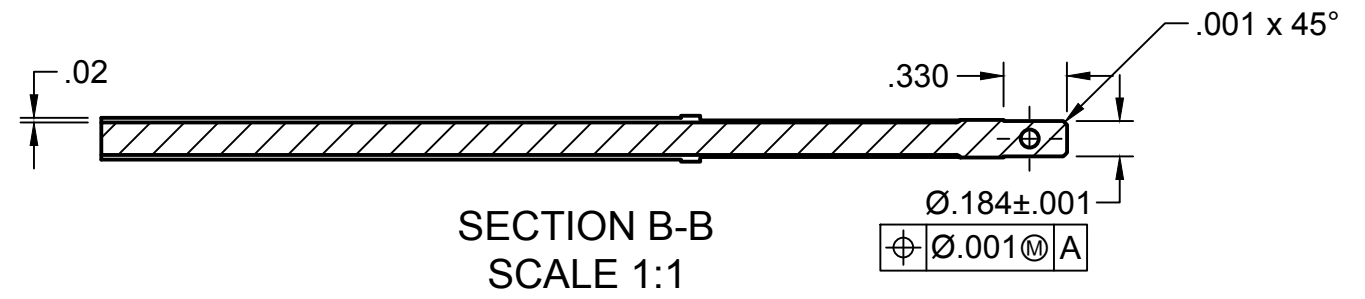
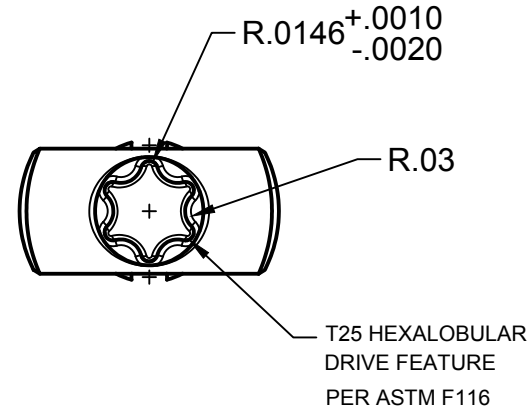


NOTE:

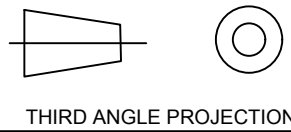
1. BREAK ALL SHARP EDGES AND CORNERS UNLESS OTHERWISE SPECIFIED
2. MATERIAL: 17-4 PER ASTM F899
3. CHROME COAT PER ASTM B650
4. PASSIVATE PER ASTM A-967 AS FINAL OPERATION



Unless otherwise state dimensions are in inches

X ± .08  
 .XX ± .01  
 .XXX ± .005  
 .XXXX ± .0005  
 ANGLES ± 2°

1. DO NOT SCALE DRAWING
2. REMOVE ALL BURRS AND SHARP EDGES .008 MAX.
3. 32/ FINISH UNLESS NOTED



paperlessPARTS

|                          |  |                    |  |                                |          |
|--------------------------|--|--------------------|--|--------------------------------|----------|
| DRAWN BY<br>Kyle May     |  | DATE<br>02/01/2025 | CUSTOMER NAME<br>Storro & Camarillo Advanced Manufacturing |                                |          |
| QUALITY<br>Riley Leonard |  | DATE<br>02/24/2025 | ITEM DESCRIPTION<br>T25 HEXALOBE DRIVER                    |                                |          |
| MFG<br>Jack Rindini      |  | DATE<br>07/07/2025 | FINISH<br>PER NOTE   | MATERIAL<br>17-4 PER ASTM F899 |          |
|                          |  | SCALE<br>2:1       | Part #<br>PP-9694174                                       | SHT<br>1/1                     | REV<br>A |