



2026 CATALOGUE

PROMOTIONAL CLOTHING

25 YEARS ON THE MARKET
PRESENCE IN 37 COUNTRIES
350+ EMPLOYEES
60+ SALES
REPRESENTATIVES
THROUGHOUT EUROPE
11 000 PRODUCT TYPES
20 MILLION PIECES
IN STOCK
24 MILLION TEXTILE ITEMS
SOLD LAST YEAR

WE ARE MALFINI

Dear customers and business partners, thank you for the trust you place in us.

For over a quarter of a century, we have been striving to do things simply but honestly. From our first T-shirts to our current portfolio containing hundreds of products, our work is based on three pillars that stand the test of time: quality, reliability and responsibility.

This catalogue is not just about products. It is at once a report on where we have moved as a company, and what innovation, customer care and sustainable development mean to us. We want it to support you – whether you are looking for a proven foundation, a way to create something unique or inspiration to take your brand further.

We believe that you will find what you need in it. And if you have any questions or ideas, we are here for you. Ready to help you, in person and with respect.

Kind regards,

Your MALFINI team

MALFINI PORTFOLIO



T-SHIRTS

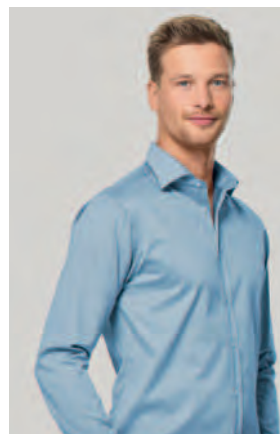
ACTION ^{150, 152}	27
ACTION V-NECK ^{700, 701}	27
BASIC ^{129, 134, 138}	9
BASIC FREE ^{F29, F34, F38}	11
BASIC RECYCLED ⁸²⁹	13
BRAVE ^{155, 156}	47
BREEZE ⁸²⁰	50
CAMO PURE ^{C22}	40
CAMOUFLAGE ^{144, 149}	41
CITY ¹²⁰	21
CLASSIC ^{101, 100}	29
CLASSIC NEW ^{132, 133, 135}	28
COLORMIX ¹⁰⁹	31
CORE ¹⁴²	41
DESTINY ^{175, 176}	51
DREAM ¹²⁸	37
ELEGANCE ¹²⁷	45
ELEMENT ¹⁴⁵	33
EXCLUSIVE ^{153, 154}	26
FANTASY ^{124, 140, 147}	49
FIT V-NECK ¹⁶²	37
FIT-T LS ^{119, 169, 121}	44
FREEDOM ¹⁷⁸	23
GLANCE ¹⁴¹	20
HEAVY ¹¹⁰	33
HEAVY NEW ¹³⁷	32
HEAVY NEW FREE ^{F37}	32
HEAVY V-NECK ¹¹¹	36
CHANCE ^{810, 811}	51
LOVE ¹²³	21
MERINO RISE ^{157, 158}	43
MERINO RISE LS ^{159, 160}	43
NATIVE ^{173, 174}	25
ORIGIN ^{171, 172}	25
PAINT ^{P73}	18
PARADE ^{P71}	19
PEAK ^{P74}	18

PELICAN ^{P72}	19
PIXEL ^{P81}	50
PROGRESS LS ^{P75}	45
PURE ¹²²	20
RESIST HEAVY ^{R03, R04}	34
RESIST LS ^{R05}	35
RESIST ^{R01, R02}	34
SAILOR ^{803, 804, 805}	38
SAILOR LS ⁸⁰⁷	39
SAILOR TOP ⁸⁰⁶	39
SLIM ¹³⁹	47
SLIM FIT V-NECK ¹⁴⁶	37
STAGE ⁸¹²	15
STREET LS ¹³⁰	31
TRIUMPH ¹³⁶	40
VIPER ^{143, 161}	17
VIPER FREE ^{F43, F61}	17
V-NECK ¹⁰²	36



POLO SHIRTS

COLLAR UP ^{256, 257}	66
COTTON ^{212, 213}	68
COTTON HEAVY ^{215, 216}	68
DIAMOND ^{273, 274}	67
DRESS UP ²⁷¹	66
GRAND ^{259, 269}	63
JOY ^{P21, P22}	71
PERFECTION PLAIN ^{251, 253}	65
PIQUE POLO ^{203, 210, 222}	59
PIQUE POLO FREE ^{F03, F10, F22}	60
PIQUE POLO LS ^{221, 231, 241}	61
PRIME ^{234, 235}	63
RESIST HEAVY POLO ^{R20, R21}	70
SINGLE J. ^{202, 223}	69
SINGLE J. LS ²¹¹	69
URBAN ^{219, 220}	65
VICTORY ²¹⁷	71



SHIRTS

DYNAMIC ^{262, 263}	79
FLASH ^{260, 261}	81
CHIC ^{207, 214}	81
JOURNEY ^{264, 265}	77
STYLE ²¹⁸	80
STYLE LS ^{209, 229}	78



SWEATSHIRTS AND SWEATPANTS

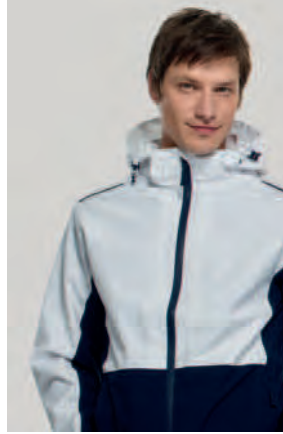
ADVENTURE, VIVA ^{407, 409}	98
BALANCE ⁶¹⁰	105
BOMBER ^{453, 454}	97
CAPE ^{413, 414}	95
CAPE FREE ^{F13, F14}	95
CLOUD ⁴²⁸	87
COMFY ⁶¹¹	107
CREW ^{426, 427}	89
ESSENTIAL ⁴⁰⁶	99
CHILL ^{422, 423}	91
LEISURE ⁶⁰³	105
MEADOW ^{609, 619}	103

MILES ^{612, 613}	106
MOON ^{420, 421}	93
REST ^{614, 615}	104
SNAP ⁴¹⁹	93
TRENDY ZIPPER ^{411, 412}	96
TWO IN ONE ⁶⁰⁴	106
VERTEX HOODIE ^{W43}	101
VERTEX ^{W42}	101
VOYAGE ^{452, 451}	97
ZERO ^{P41}	99



FLEECE

CASUAL ⁵⁵⁰	121
DIRECT ^{417, 418}	119
EFFECT ⁵³⁰	121
EXIT ⁵²⁵	117
FROSTY ^{527, 528, 529}	113
JACKET ^{501, 504}	115
JACKET HI-Q ⁵⁰⁶	115
NEXT ⁵¹⁸	117
VERTEX ^{W41}	118



OUTDOOR

BODY WARMER ⁵⁰⁹	139
CROSS ^{555, 556}	130
CROSS ^{557, 558}	131
EVEREST ^{552, 551}	132
EVEREST ^{553, 554}	132
NANO ^{531, 532}	138
PACIFIC 3 IN 1 ^{533, 534}	135
PERFORMANCE ^{522, 521}	129
PHANTOM ^{540, 541}	133
RAINBOW ^{538, 539}	137
TRAIL ^{548, 549}	127
TRAIL ^{568, 569}	127
VERTEX ^{W55}	134
WINDY ⁵²⁴	139



ACCESSORIES

5P ³⁰⁷	147
6P ³⁰⁵	147
6P KIDS ³⁰³	148
BAMBOO BATH TOWEL ⁹⁵²	157
BAMBOO TOWEL ⁹⁵¹	157
BATH TOWEL 450 ⁹⁰⁵	157
BEANIE ³¹⁵	145
CARRY ⁹⁰¹	153
CLASSIC ³⁰⁴	151
EASYGO ⁹²²	155
ENERGY ⁹¹²	155
HANDY ⁹⁰⁰	154
ORGANIC TOWEL ^{916, 917, 918}	156
RAP 5P ³⁰¹	145
SANDWICH 6P ³⁰⁶	148
SHOPPER ⁹²¹	153
SUNSHINE ^{P31}	149
TOWEL 450 ⁹⁰³	157
TWISTER ³²⁸	151



RIMECK

BODY WARMER ⁵⁰⁹	185
CASUAL ⁵⁵⁰	183
COLORMIX ¹⁰⁹	181
EFFECT ⁵³⁰	183
HV BRIGHT ^{9V3}	192
HV DROP ^{5V3}	187
HV DRY ^{1V8}	191
HV ESSENTIAL ^{4V6}	190
HV FLEECE JACKET ^{5V1}	190
HV GUARD 4 IN 1 ^{5V2}	189
HV PROTECT ^{1V9}	191
HV REFLEX ^{3V5}	193
HV RUNWAY ^{2V9}	192
JACKET ^{501, 504}	182
JACKET HI-Q ⁵⁰⁶	182
NEXT ⁵¹⁸	185
RESIST HEAVY POLO ^{R20, R21}	179
RESIST HEAVY ^{R03, R04}	178
RESIST LS ^{R05}	179
RESIST ^{R01, R02}	178
SHIELD ^{A99}	193
STREET LS ¹³⁰	181
VERTEX HOODIE ^{W43}	173
VERTEX ^{W07}	167
VERTEX ^{W41}	169
VERTEX ^{W42}	171
VERTEX ^{W55}	165
WOODY ^{W02}	175
WOODY ^{W51, W01}	176
WOODY ^{W52, W05}	177

NEW PR



MEADOW

Pants

Unisex 609

Kids 619

CHILL

Sweatshirt

Unisex 422

Kids 423

TRAIL

Softshell Jacket, Vest

Men's 548, 568

Women's 549, 569

ODUETS



CREW

Sweatshirt
Unisex 426
Kids 427

CLOUD

Sweatshirt
Unisex 428

T F A





IRTS

T-shirts are an integral part of our everyday life. They have evolved over time into an art and personal expression phenomenon from the original practical workwear purpose. A canvas for expressing creativity, opinions, or interests.

BASIC





BASIC

T-shirt men's 129 · women's 134 · kids 138
XS-5XL · XS-3XL · 4 y./110 cm-12 y./158 cm

160 g/m²

Single Jersey, 100 % cotton, silicone finish

- narrow 1:1 rib knit neckline hem with 5 % elastane
- Men's: tubular cut · Woman's: slight fit cut with side seams · Kids: cut with side seams



NEW COLOURS



Our iconic T-shirt for the whole family made of 100% cotton.
Trusted fit and soft fabric with a silicone finish. A bestseller
available in up to 46 colors.

*129: 5XL size available in colours 00, 01, 02, 05, 06, 07, 12, 67 · 134: 3XL size available in colours 00, 01, 02, 05, 07, 12, 30
* Material composition may differ: colour 03 - 97 % cotton, 3 % viscose; colour 12 - 85 % cotton, 15 % viscose
For further information about the delivery date of new arrivals, please contact the Sales department.*

BASIC FREE





BASIC FREE

T-shirt men's F29 · women's F34 · kids F38
S-3XL · XS-2XL · 4 years/110 cm - 12 y./158 cm

160 g/m²

Single Jersey, 100 % cotton, silicone finish

- label free - ready for rebranding
- narrow 1:1 rib knit neckline hem with 5 % elastane
- men's: tubular cut
- woman's: slight fit cut with side seams
- kids: cut with side seams



SILICONE



LABEL FREE



F34: XS size available in colours 00, 01

** Material composition may differ: colour 03 - 97 % cotton, 3 % viscose; colour 12 - 85 % cotton, 15 % viscose*

BASIC RECYCLED





BASIC RECYCLED

T-shirt men's 829

XS-5XL

160 g/m²

Single Jersey, 70 % cotton, 30 % recycled cotton, silicone finish

- 30 % recycled cotton
- tubular cut
- narrow 1:1 rib knit neckline hem with 5 % elastane



SILICONE



RECYCLED COTTON



LABEL FREE



Men's T-shirt containing 30% recycled cotton, produced in a GRS-certified factories. Available in black and white and in sizes from XS to 5XL.

STAGE





STAGE

T-shirt unisex 812
XS-3XL

200 g/m²
Single Jersey, 100 % cotton, enzymatic finish

- label free - ready for rebranding
- oversized cut with side seams
- 1:1 rib knit neckline hem with 5 % elastane
- low cap sleeves



NEW COLOURS



Heavyweight T-shirt with a timeless oversized cut.
Enzyme treatment ensures softness of the material.
Unisex design is ideal for universal use.

812: XS, 3XL size only in colours 00, 01

* Material composition may differ: colour 12 - 85 % cotton, 15 % viscose

For further information about the delivery date of new arrivals, please contact the Sales department.

WIDER





VIPER

T-shirt men's 143 · women's 161
S-3XL · XS-2XL

180 g/m²
Single Jersey, 100 % cotton, silicone finish

- Men's: slim fit cut with side seams, narrow 1:1 rib knit neckline hem with 5 % elastane
- Woman's: slight fit cut with side seams, narrow neckline hem from shell fabric with 5 % elastane



SILICONE

VIPER FREE

T-shirt men's F43 · women's F61
S-2XL · XS-2XL

180 g/m²
Single Jersey, 100 % cotton, silicone finish

- label free - ready for rebranding
- Men's: slim fit cut with side seams, narrow 1:1 rib knit neckline hem with 5 % elastane
- Woman's: slight fit cut with side seams, narrow neckline hem from shell fabric with 5 % elastane



SILICONE



LABEL FREE

143: 3XL size available in colours 00, 01, 02, 05, 07, 12 · 161: XS size available in colours 00, 01 · F61: XS size available in colours 00, 01
* Material composition may differ: colour 12 - 85 % cotton, 15 % viscose



PEAK

T-shirt unisex P74
XS-4XL

175 g/m²
Single Jersey, 100 % cotton

- tubular cut
- 1:1 rib knit neckline hem



TEAR OFF



PAINT

T-shirt unisex P73
XS-4XL

150 g/m²
Single Jersey, 100 % cotton

- tubular cut
- 1:1 rib knit neckline hem



TEAR OFF

P74: XS, 4XL size available in colours 00, 01

* Material composition may differ: colour 03 - 97 % cotton, 3 % viscose; colour 12 - 85 % cotton, 15 % viscose



PARADE

T-shirt unisex P71
XS-4XL

135 g/m²
Single Jersey, 100 % cotton

- tubular cut
- 1:1 rib knit neckline hem



NEW COLOURS



PELICAN

T-shirt kids P72
4 years/110 cm-12 y./158 cm

135 g/m²
Single Jersey, 100 % cotton

- cut with side seams
- 1:1 rib knit neckline hem





PURE

T-shirt women's 122
XS-3XL

150 g/m²
Single Jersey, 100 % cotton, silicone finish

- slight fit cut with side seams
- neckline trimmed with shell fabric



SILICONE

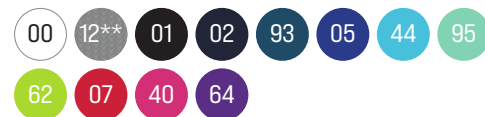


GLANCE

T-shirt women's 141
XS-2XL

180 g/m²
Single Jersey, 95 % cotton, 5 % elastane

- stretch fabric for better dimensional stability
- slim fit cut with side seams
- narrow neckline hem from shell fabric



ELASTANE

122: XS size available in colours 00, 01, 3XL size available in colours 00, 01, 02, 07, 12 • 141: XS size available in colours 00, 01
* Material composition may differ: colour 03 - 97 % cotton, 3 % viscose, colour 12 - 85 % cotton, 15 % viscose; **colour 12 - 80 % cotton, 15 % viscose, 5 % elastane



CITY

T-shirt women's 120
XS-3XL

150 g/m²
Single Jersey, 100 % cotton, silicone finish

- loose cut with side seams
- neckline trimmed with shell fabric

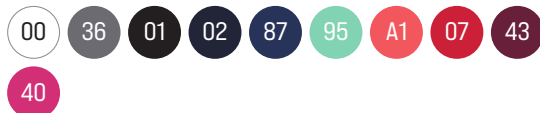


LOVE

T-shirt women's 123
S-2XL

170 g/m²
Single Jersey, 95 % viscose, 5 % elastane

- loose cut with side seams
- length below hip line
- boat neckline
- neckline trimmed with shell fabric
- kimono sleeves



120: XS, 3XL size available in colours 00, 01
 * Material composition may differ: colour 12 - 85 % cotton, 15 % viscose

FREEDOM





FREEDOM

Dress women's 178
S-2XL

180 g/m²
Single Jersey, 100 % cotton

- loose slightly shaped cut
- above knee length
- narrow neckline hem from shell fabric with 5 % elastane
- turned-up sleeves stitched in 4 points
- contrast elements



LABEL FREE



Timeless women's slightly fitted dress with rolled-up sleeves and above-knee length. The elegant silhouette makes it ideal for everyday wear and branding.

** Material composition may differ: colour 12 - 85 % cotton, 15 % viscose*

NATIVE



ORGANIC COTTON

Cotton produced from ecologically controlled agriculture and further processed under the strict inspection of all manufacturing processes. The biggest producers are Turkey, India, the USA and China. Organic Certified by Intertek GOTS-14289.



ORIGIN

T-shirt men's 171 · women's 172
S-3XL · XS-2XL

160 g/m²
Single Jersey, 100 % organic cotton GOTS

- narrow neckline hem from shell fabric with 5 % elastane
- curved bottom edge
- Men's: cut with side seams
- Woman's: slight fit cut with side seams



Organic
Certified by Intertek
GOTS-14289

NATIVE

T-shirt men's 173 · women's 174
S-3XL · XS-2XL

150 g/m²
Single Jersey Slub, 100 % organic cotton GOTS

- thick-thin structure of slub knit fabric
- narrow neckline hem from shell fabric with 5 % elastane
- Men's: cut with side seams
- Woman's: slight fit cut with side seams



Organic
Certified by Intertek
GOTS-14289

EXCLUSIVE

T-shirt men's 153 · women's 154
S-3XL · S-2XL

160 g/m²
Single Jersey, 100 % SUPIMA® cotton

- the finest SUPIMA® cotton
- slim fit cut with side seams
- narrow 1:1 rib knit neckline hem with 5 % elastane
- contrast elements

Extra soft T-shirt made of SUPIMA® cotton. The premium long-fiber material retains its shape, is smooth, soft, and stays pretty even after years of wear.



Not all cottons are created equal. Supima cotton is a superior type of cotton grown in the USA. It represents less than 1% of cotton grown in the world. What makes Supima unique to other cottons is the extra-long staple fiber that gives the cotton its premium properties: Strength, Softness and Color retention.

153: 3XL size available in colours 00, 01



ACTION

T-shirt men's 150 · women's 152
S-3XL · XS-2XL

180 g/m²
Single Jersey, 95 % cotton, 5 % elastane

- stretch fabric for better dimensional stability
- slim fit cut with side seams
- narrow 1:1 rib knit neckline hem with 5 % elastane
- decorative stitching
- contrast elements



ELASTANE

ACTION V-NECK

T-shirt men's 700 · women's 701
S-2XL · S-2XL

180 g/m²
Single Jersey, 95 % cotton, 5 % elastane

- stretch fabric for better dimensional stability
- slim fit cut with side seams
- narrow 1:1 rib knit neckline hem with 5 % elastane
- contrast elements



ELASTANE



LAST CHANCE

150: 3XL size available in colours 00, 01 · 152: XS size available in colours 00, 01

CLASSIC NEW

T-shirt men's 132 • women's 133 • kids 135
S-3XL • XS-2XL • 4 years/110 cm-12 y./158 cm

145 g/m²
Single Jersey, 100 % cotton

- narrow 1:1 rib knit neckline hem
- Men's: tubular cut
- Woman's: slight fit cut with side seams
- Kids: cut with side seams



133: XS size available in colours 00, 01

* Material composition may differ: colour 03 - 97 % cotton, 3 % viscose; colour 12 - 85 % cotton, 15 % viscose



CLASSIC

T-shirt unisex 101 • kids 100
S-4XL • 4 years/110 cm-12 y./158 cm

160 g/m²
Single Jersey, 100 % cotton

- 1:1 rib knit neckline hem
- Unisex: tubular cut
- Kids: cut with side seams



101: 4XL size available in colours 00, 01

* Material composition may differ: colour 03 - 97 % cotton, 3 % viscose; colour 12 - 85 % cotton, 15 % viscose

COLORMIX





COLORMIX

T-shirt unisex 109
S-4XL

200 g/m²
Single Jersey, 100 % cotton

- cut with side seams
- 1:1 rib knit neckline hem with 5 % elastane



01/94/01 07/01/00 14/02/00 01/44/01 01/16/01 01/62/01 01/04/01 01/11/00 01/07/00

STREET LS

T-shirt unisex 130
S-4XL

180 g/m²
Single Jersey, 100 % cotton

- cut with side seams
- narrow 1:1 rib knit neckline hem with 5 % elastane
- 1:1 rib knit cuff with 5 % elastane



00/00 94/01 01/01 02/14 05/05 06/01 11/01 23/67



HEAVY NEW

T-shirt unisex 137
XS-5XL

200 g/m²
Single Jersey, 100 % cotton, silicone finish

- tubular cut
- narrow 1:1 rib knit neckline hem with 5 % elastane



SILICONE



HEAVY NEW FREE

T-shirt unisex F37
XS-3XL

200 g/m²
Single Jersey, 100 % cotton, silicone finish

- label free - ready for rebranding
- tubular cut
- narrow 1:1 rib knit neckline hem with 5 % elastane



LABEL FREE



SILICONE

137: XS, 4XL size available in colours 00, 01, 02, 05, 07; 5XL size in 00, 01 • F37: XS size available in colours 00, 01

* Material composition may differ: colour 03 - 97 % cotton, 3 % viscose; colour 12 - 85 % cotton, 15 % viscose; colour 90 - 50% cotton, 50% polyester



HEAVY

T-shirt unisex 110
S-3XL

200 g/m²
Single Jersey, 100 % cotton

- tubular cut
- 1:1 rib knit neckline hem with 5 % elastane



ELEMENT

T-shirt unisex 145
XS-4XL

180 g/m²
Single Jersey, 100 % cotton

- tubular cut
- narrow 1:1 rib knit neckline hem with 5 % elastane
- tear-off label



LABEL FREE



145: XS, 4XL size available in colours 00, 01

* Material composition may differ: colour 03 - 97 % cotton, 3 % viscose; colour 12 - 85 % cotton, 15 % viscose



RESIST

T-shirt men's R01 · women's R02
S-4XL · S-3XL

160 g/m²
Single Jersey, 100 % pre-shrunk cotton

- pre-shrunk cotton resistant to higher temperatures
- neckline trimmed with 1:1 rib knit fabrics
- men's: cut with side seams
- women's: slight fit cut with side seams



RESIST HEAVY

T-shirt men's R03 · women's R04
S-4XL · S-3XL

200 g/m²
Single Jersey, 100 % pre-shrunk cotton

- pre-shrunk cotton resistant to higher temperatures
- neckline trimmed with 1:1 rib knit fabric
- men's – cut with side seams
- women's – slight fit cut with side seams





RESIST LS

T-shirt unisex R05
S-3XL

160 g/m²
Single Jersey, 100 % pre-shrunk cotton

- pre-shrunk cotton resistant to higher temperatures
- cut with side seams
- neckline trimmed with 1:1 rib knit fabric
- 1:1 rib knit cuff



60 95
COLOR WHITE



RESIST, RESIST HEAVY, RESIST LS

Durable T-shirt made of pre-shrunk cotton, washable up to 95 °C (white version) while keeping its shape. Available in men's and women's versions, with short or long sleeves. Perfect for heavy-duty use as well as casual wear.



V-NECK

T-shirt unisex 102
S-3XL

160 g/m²
Single Jersey, 100 % cotton

- tubular cut
- 1:1 rib knit neckline hem



HEAVY V-NECK

T-shirt unisex 111
S-4XL

200 g/m²
Single Jersey, 100 % cotton

- tubular cut
- narrow 1:1 rib knit neckline hem with 5 % elastane



111: S, 4XL size available in colours 00, 01

* Material composition may differ: colour 03 - 97 % cotton, 3 % viscose; colour 12 - 85 % cotton, 15 % viscose



SLIM FIT V-NECK • FIT V-NECK

T-shirt men's 146 • women's 162
S-3XL • XS-2XL

180 g/m²
Single Jersey, 100 % cotton, silicone finish

- Men's: slim fit cut with side seams
- narrow 1:1 rib knit neckline hem with 5 % elastane
- Woman's: slight fit cut with side seams
- narrow neckline hem from shell fabric with 5 % elastane



SILICONE

DREAM

T-shirt women's 128
XS-3XL

180 g/m²
Single Jersey, 95 % cotton, 5 % elastane

- stretch fabric for better dimensional stability
- slim fit cut with side seams
- neckline trimmed with shell fabric • short raglan sleeves



ELASTANE

162: XS size available in colours 00, 01 • 128: XS, 3XL size available in colours 00, 01

* Material composition may differ: colour 12 - 85 % cotton, 15 % viscose; **colour 12 - 80 % cotton, 15 % viscose, 5 % elastane

SAILOR

T-shirt unisex 803 · women's 804 · kids 805
XS-3XL · XS-2XL · 4 years/110 cm-12 y./158 cm

150 g/m²
Single Jersey, 100 % cotton

- narrow 1:1 rib knit neckline hem with 5 % elastane
- Unisex/Kids: cut with side seams
- Woman's: slight fit cut with side seams

02


LAST CHANCE
804





SAILOR LS

T-shirt unisex 807
S-3XL

150 g/m²
Single Jersey, 100 % cotton

- stretch fabric for better dimensional stability
- neckline trimmed with 1:1 rib knit fabric with 5 % elastane

02



LAST CHANCE



SAILOR TOP

Top women's 806
S-2XL

180 g/m²
Single Jersey, 95 % cotton, 5 % elastane

- stretch fabric for better dimensional stability
- slim fit cut with side seams
- neckline and armholes trimmed with shell fabric

02



ELASTANE



LAST CHANCE





CAMO PURE

T-shirt women's C22
S-2XL

150 g/m²
Single Jersey, 100 % cotton, silicone finish

- slight fit cut with side seams
- slim fit cut with side seams
- neckline trimmed with shell fabric



SILICONE



LAST CHANCE



TRIUMPH

Top women's 136
XS-2XL

180 g/m²
Single Jersey, 95 % cotton, 5 % elastane

- stretch fabric for better dimensional stability
- slim fit cut with side seams
- neckline and armholes trimmed with shell fabric



ELASTANE



CAMOUFLAGE

T-shirt unisex 144 · kids 149
S-3XL · 4 years/110 cm-12 y./158 cm

160 g/m²
Single Jersey, 100 % cotton

- cut with side seams
- narrow 1:1 rib knit neckline hem with 5 % elastane



LAST CHANCE



CORE

Top men's 142
S-2XL

160 g/m²
Single Jersey, 100 % cotton

- tubular cut
- neckline and armholes trimmed with shell fabric



142: S size available in colours 00, 01

Material composition may differ: *colour 12 - 85 % cotton, 15 % viscose; **colour 12 - 80 % cotton, 15 % viscose, 5 % elastane

MERINO



MERINO

Merino wool is world renowned for its soft, yet firm feel, offering advantages in every area over common wool and many other fibers. The reason for these qualities is the size of an individual fiber – and merino wool fibers are very fine, thinner than 18 microns. Lightweight functional T-shirt made of merino wool naturally responds to temperature changes, absorbs odors, and is easy to maintain. Available with short or long sleeves.



MERINO RISE

T-shirt men's 157 · women's 158
S-3XL · S-2XL

190 g/m²
Single Jersey, 100 % merino wool, 17,5 µm, machine wash

- extra-fine merino wool
- wrinkle-free and highly breathable fabric
- thermoregulating and antibacterial features
- the ability of moisture wicking and odor absorption
- slim fit cut with side seams
- narrow neckline hem from shell fabric



MERINO



REGULATION



BREATHABLE



ODOR RESISTANT

MERINO RISE LS

T-shirt men's 159 · women's 160
S-3XL · S-2XL

190 g/m²
Single Jersey, 100 % merino wool, 17,5 µm,
machine wash

- extra-fine merino wool
- wrinkle-free and highly breathable fabric
- thermoregulating and antibacterial features
- the ability of moisture wicking and odor absorption
- slim fit cut with side seams
- narrow neckline hem from shell fabric



MERINO



REGULATION



BREATHABLE



ODOR RESISTANT

FIT-T LS

T-shirt men's 119 · women's 169 · kids 121
S-3XL · XS-3XL · 4 years/110 cm-12 y./158 cm

160 g/m²
Single Jersey, 100 % cotton

- men's: slim fit cut with side seams
- neckline trimmed with 1:1 rib knit fabric
- woman's: slight fit cut with side seams
- narrow 1:1 rib knit neckline hem with 5 % elastane
- kids: cut with side seams
- neckline trimmed with 1:1 rib knit fabric



119: S, 3XL size available in colours 00, 01, 02 · 169: XS, 3XL size available in colours 00, 01
* Material composition may differ: colour 12 - 85 % cotton, 15 % viscose



PROGRESS LS

T-shirt unisex P75

XS-3XL

150 g/m²

Single Jersey, 100 % cotton

- tubular cut
- 1:1 rib knit neckline hem



TEAR OFF



ELEGANCE

T-shirt women's 127

XS-3XL

180 g/m²

Single Jersey, 95 % cotton, 5 % elastane

- stretch fabric for better dimensional stability
- slim fit cut with side seams
- long raglan sleeves
- neckline trimmed with shell fabric



ELASTANE



P75: XS only in colours 00, 01, 02; 3XL only in colours 00, 01, 02

127: XS, 3XL size available in colours 00, 01

** Material composition may differ: colour 03 - 97 % cotton, 3 % viscose; colour 12 - 85 % cotton, 15 % viscose, 5 % elastane*

SLIM





SLIM

T-shirt women's 139
XS-3XL

180 g/m²
Single Jersey, 95 % cotton, 5 % elastane

- stretch fabric for better dimensional stability
- slim fit cut with side seams
- neckline trimmed with shell fabric



BRAVE

T-shirt men's 155 · women's 156
S-3XL · XS-2XL

160 g/m²
Single Jersey, 95 % cotton, 5 % elastane

- stretch fabric for better dimensional stability
- slim fit cut with side seams
- narrow 1:1 rib knit neckline hem with 5 % elastane
- contrast elements



139: XS, 3XL size available in colours 00, 01
 155: S, 3XL only in colours 00, 01, 02 · 156: XS only in colours 00, 01
 * Material composition may differ: colour 12 - 80 % cotton, 15 % viscose, 5 % elastane

FANTASY





FANTASY

T-shirt men's 124 · women's 140 · kids 147
S-3XL · XS-2XL · 6 years/122 cm-12 y./158 cm

150 g/m²
Interlock pique, 100 % polyester

- quick-drying fabric
- ideal for sport and leisure activities
- men's/kids: cut with side seams
- unusually designed neckline
- women's: slim fit cut with side seams
- narrow neckline hem from shell fabric



EXTRA DRY



Lightweight and breathable sports T-shirt in 18 colors.
Quick-drying material. Available for men, women,
and children. An ideal choice for sports and leisure activities.

140: XS size available in colours 00, 01



PIXEL

T-shirt unisex P81
XS-3XL

130 g/m²
Double Face, 100 % polyester

- smooth quick-drying fabric
- ideal for sport and leisure activities
- cut with side seams
- 1:1 rib knit neckline hem



BREEZE

Top men's 820
S-2XL

150 g/m²
Interlock pique, 100 % polyester

- quick-drying fabric
- ideal for sport and leisure activities
- cut with side seams
- neckline hem from shell fabric
- armholes trimmed with shell fabric



P81: XS only in colour 00



CHANCE

T-shirt men's 810 · women's 811
S-3XL · XS-2XL

140 g/m²
Interlock pique, 100 % [GRS] recycled micro polyester

- quick-drying fabric
- ideal for sport and leisure activities
- flat shoulder seams
- decorative stitching
- narrow neckline hem from shell fabric
- men's: cut with side seams
- woman's: loose cut with side seams



DESTINY

T-shirt men's 175 · women's 176
S-2XL · XS-2XL

160 g/m²
Single Jersey, 95 % micro polyester, 5 % elastane

- smooth stretch quick-drying fabric
- ideal for sport and leisure activities
- slim fit cut with side parts
- decoratively stitched flat seams
- curved and slightly prolonged back part
- narrow neckline hem from shell fabric
- removable sticker label



811: XS size available in colours 00, 01

T-SHIRTS

		g/m ²	05	70	14	15	02	01	94	83	M1	36	25	12	A4	M3	03	00	87	60	M2	93	44	59	95	A7	09	67	28
150	Action	M	180	●			●	●		●								○				●							
152	Action	W	180	●			●	●		●								○				●							
700	Action V-neck	M	180				●	●		●								○											
701	Action V-neck	W	180				●	●		●								○											
129	Basic	M	160	●	●	●	●	●	●			●		●			●	○	●	●		●	●		●	●	●	●	●
134	Basic	W	160	●	●	●	●	●	●			●		●			●	○	●	●		●	●		●	●	●	●	●
138	Basic	K	160	●	●	●	●	●						●			●	○	●				●	●		●	●		
F29	Basic Free	M	160	●		●	●	●						●			●	○					●	●					●
F34	Basic Free	W	160	●		●	●	●						●			●	○					●	●					●
F38	Basic Free	K	160	●			●	●						●			●	○					●	●					●
829	Basic recycled	M	160					●										○											
155	Brave	M	160				●	●		●								○				●							
156	Brave	W	160				●	●		●								○				●							
820	Breeze	M	150	●			●	●										○											
810	Chance	M	140					●			●						●	○				●							
811	Chance	W	140					●			●						●	○				●							
120	City	W	150	●			●	●						●				○	●				●	●	●				
100	Classic	K	160	●			●	●									●	○											
101	Classic	U	160	●			●	●						●			●	○											
132	Classic New	M	145	●			●	●	●					●			●	○	●			●	●					●	●
133	Classic New	W	145	●			●	●	●					●			●	○	●			●	●						
135	Classic New	K	145	●			●	●						●			●	○					●	●					
109	Colormix	U	200			●		●	●														●						
142	Core	M	160	●			●	●						●				○											
175	Destiny	M	160	●			●	●						●				○											
176	Destiny	W	160	●			●	●						●				○											
128	Dream	W	180	●			●	●						●				○					●		●				
127	Elegance	W	180	●		●	●	●										○						●		●			
145	Element	U	180	●			●	●						●				○					●						
153	Exclusive	M	160				●	●		●						●		○				●							
154	Exclusive	W	160				●	●		●						●		○											
124	Fantasy	M	150	●	●		●	●										○					●	●		●			
140	Fantasy	W	150	●	●		●	●										○					●	●		●			
147	Fantasy	K	150	●	●		●	●										○					●	●		●			
119	Fit LS	M	160	●			●	●				●		●				○					●	●					
121	Fit LS	K	160	●			●	●				●		●				○					●	●					
169	Fit LS	W	160	●			●	●						●				○					●	●					
162	Fit V-neck	W	180	●			●	●	●					●				○		●			●	●		●			
178	Freedom	W	180	●			●	●						●				○	●				●	●		●		●	
141	Glance	W	180	●			●	●						●				○		●			●	●		●			



	29	A3	09	06	69	27	08	D1	30	40	49	89	64	43	86	23	71	07	A1	11	91	A2	M9	88	04	19	16	92	62	90	96	51	21	C5				
150																																						
152																																						
700																																						
701																																						
129	●	●	●	●	●	●	●	●	●	●	●	●	●	●	●	●	●	●	●	●	●	●	●	●	●	●	●	●	●	●	●	●	●	●				
134		●	●	●	●	●	●	●	●	●	●	●	●	●	●	●	●	●	●	●	●	●	●	●	●	●	●	●	●	●	●	●	●	●	●			
138		●	●	●	●	●	●	●	●	●	●	●	●	●	●	●	●	●	●	●	●	●	●	●	●	●	●	●	●	●	●	●	●	●	●			
F29		●	●	●	●	●	●	●	●	●	●	●	●	●	●	●	●	●	●	●	●	●	●	●	●	●	●	●	●	●	●	●	●	●	●			
F34		●	●	●	●	●	●	●	●	●	●	●	●	●	●	●	●	●	●	●	●	●	●	●	●	●	●	●	●	●	●	●	●	●	●	●		
F38			●	●	●	●	●	●	●	●	●	●	●	●	●	●	●	●	●	●	●	●	●	●	●	●	●	●	●	●	●	●	●	●	●	●		
829																																						
155																																						
156																																						
820																																						
810																																						
811																																						
120		●	●	●	●	●	●	●	●	●	●	●	●	●	●	●	●	●	●	●	●	●	●	●	●	●	●	●	●	●	●	●	●	●	●	●		
100																																						
101			●	●	●	●	●	●	●	●	●	●	●	●	●	●	●	●	●	●	●	●	●	●	●	●	●	●	●	●	●	●	●	●	●	●	●	
132	●	●	●	●	●	●	●	●	●	●	●	●	●	●	●	●	●	●	●	●	●	●	●	●	●	●	●	●	●	●	●	●	●	●	●	●	●	
133		●	●	●	●	●	●	●	●	●	●	●	●	●	●	●	●	●	●	●	●	●	●	●	●	●	●	●	●	●	●	●	●	●	●	●	●	
135			●	●	●	●	●	●	●	●	●	●	●	●	●	●	●	●	●	●	●	●	●	●	●	●	●	●	●	●	●	●	●	●	●	●	●	
109																																						
142																																						
175																																						
176																																						
128																																						
127																																						
145																																						
153		●	●	●	●	●	●	●	●	●	●	●	●	●	●	●	●	●	●	●	●	●	●	●	●	●	●	●	●	●	●	●	●	●	●	●	●	
154		●	●	●	●	●	●	●	●	●	●	●	●	●	●	●	●	●	●	●	●	●	●	●	●	●	●	●	●	●	●	●	●	●	●	●	●	
124		●	●	●	●	●	●	●	●	●	●	●	●	●	●	●	●	●	●	●	●	●	●	●	●	●	●	●	●	●	●	●	●	●	●	●	●	
140		●	●	●	●	●	●	●	●	●	●	●	●	●	●	●	●	●	●	●	●	●	●	●	●	●	●	●	●	●	●	●	●	●	●	●	●	
147																																						
119	●	●	●	●	●	●	●	●	●	●	●	●	●	●	●	●	●	●	●	●	●	●	●	●	●	●	●	●	●	●	●	●	●	●	●	●	●	
121		●	●	●	●	●	●	●	●	●	●	●	●	●	●	●	●	●	●	●	●	●	●	●	●	●	●	●	●	●	●	●	●	●	●	●	●	
169		●	●	●	●	●	●	●	●	●	●	●	●	●	●	●	●	●	●	●	●	●	●	●	●	●	●	●	●	●	●	●	●	●	●	●	●	
162																																						
178																																						
141																																						

T-SHIRTS

		g/m ²		05	70	14	15	02	01	94	83	M1	36	25	12	A4	M3	08	00	87	60	M2	93	44	59	95	A7	C9	67	28
110	Heavy	U	200	●				●	●	●								○	○											
137	Heavy New	U	200	●	●	●	●	●	●	●					●			○	○	●	●		●	●	●	●	●		●	●
F37	Heavy New Free	U	200	●				●	●						●				○	○										
111	Heavy V-neck	U	200	●				●	●						●				○	○										
123	Love	W	170					●	●				●						○	●					●					
157	Merino Rise	M	190						●						●															
158	Merino Rise	W	190						●						●															
159	Merino Rise LS	M	190						●						●															
160	Merino Rise LS	W	190						●						●															
173	Native	M	150	●				●	●					●					○				●							
174	Native	W	150	●				●	●					●					○				●							
171	Origin	M	160	●				●	●					●					○				●							
172	Origin	W	160	●				●	●					●					○				●							
P73	Paint	U	150	●			●	●							●			○	○				●	●						
P71	Parade	U	135	●				●	●										○					●						
P74	Peak	U	175	●				●	●						●			○	○											
P72	Pelican	K	135	●			●		●										○					●						
P81	Pixel	U	130						●										○					●						
P75	Progress LS	U	150	●				●	●						●			○	○											
122	Pure	W	150	●	●			●	●				●		●			○	○	●			●	●	●	●	●	●		
R01	Resist	M	160	●			●	●	●										○				●		●					
R02	Resist	W	160	●			●	●	●										○				●		●					
R03	Resist Heavy	M	200	●				●	●	●									○											
R04	Resist Heavy	W	200	●				●	●	●									○											
R05	Resist LS	U	160	●				●	●	●									○				●							
803	Sailor	U	150					●																						
804	Sailor	W	150					●																						
805	Sailor	K	150					●																						
807	Sailor LS	U	150					●																						
806	Sailor top	W	180					●																						
139	Slim	W	180	●			●	●							●				○				●	●	●					
146	Slim Fit V-neck	M	180	●				●	●	●					●				○		●			●	●	●				●
812	Stage	U	200						●						●				○	●							●			
130	Street LS	U	180	●				●	●	●									○											
136	Triumph	W	180	●	●			●	●						●				○					●		●				
143	Viper	M	180	●				●	●						●				○		●			●					●	●
161	Viper	W	180	●				●	●						●				○		●			●						
F43	Viper free	M	180	●				●	●						●				○					●						
F61	Viper free	W	180	●				●	●						●				○					●						
102	V-neck	U	160	●				●	●						●			○	○											

CAMOUFLAGE

		g/m ²		32	33	34	C1																							
C22	Camo Pure	W	150																											
144	Camouflage	U	160																											
149	Camouflage	K	160																											



	29	A3	09	06	69	27	08	D1	30	40	49	89	64	43	86	23	71	07	A1	11	91	A2	M9	88	04	19	16	92	62	90	96	51	21	C5	
110																																			
137	●		●	●	●	●	●			●					●	●		●	●	●		●			●	●	●		●			●			
F37																																			
111																																			
123										●				●				●	●																
157																																	●		
158																																	●		
159																																	●		
160																																●	●		
173			●		●									●				●															●		
174			●		●									●				●															●		
171			●		●									●				●															●		
172			●		●									●				●															●		
P73				●						●			●					●		●						●	●	●							
P71				●														●		●															
P74				●														●																	
P72										●			●					●								●	●	●							
P81																					●											●			
P75				●														●																	
122			●		●				●	●	●	●	●	●				●	●	●	●	●	●		●	●	●	●	●	●					
R01				●												●		●		●															
R02				●					●							●		●		●															
R03				●												●		●		●															
R04				●												●		●		●															
R05				●												●		●		●															
803																																			
804																																			
805																																			
807																																			
806																																			
139										●				●				●																	
146	●																	●									●								
812			●			●			●						●						●												●		
130				●												●					●														
136										●			●					●								●	●	●	●	●					
143	●		●							●								●								●	●	●	●	●					
161			●								●							●								●	●	●	●						
F43			●															●								●	●	●	●						
F61			●															●								●	●	●	●						
102				●				●										●								●	●	●	●						

POLOS



SHIRTS



Polo shirts are not just for tennis. Polo shirts have become a fundamental element in many wardrobes due to their elegant appearance and high comfort. They are suitable for both sporting activities and everyday wear.



PILOUE
PILOUE



PIQUE POLO

Polo Shirt men's 203 · women's 210 · kids 222
S-5XL · XS-3XL · 6 years/122 cm-12 y./158 cm

200 g/m²

Pique, 65 % cotton, 35 % polyester

- 1:1 rib knit collar and sleeve hems with double relief stripe
- men's/Kids: cut with side seams
- woman's: slight fit cut with side seams



NEW COLOURS

21



NEW COLOUR



Very popular polo shirt with embossed details on the collar and sleeves. The high-weight blended fabric polo shirt, available in 35 colors, comes in men's, women's, and children's versions.

203: 4XL size available in colour 00, 01, 02, 04, 05, 06, 07, 09, 11, 12, 15, 94; 5XL size available in colour 00, 01 • 210: 3XL size available in colour 00, 01, 07

* Material composition may differ: colour 03 - 97 % cotton, 3 % viscose; colour 12 - 85 % cotton, 15 % viscose

For further information about the delivery date of new arrivals, please contact the Sales department.

PIQUE POLO FREE

Polo Shirt men's F03 · women's F10 · kids F22
S-3XL · XS-2XL · 6 years/122 cm-12 y./158 cm

200 g/m²

Pique, 65 % cotton, 35 % polyester

- label free - ready for rebranding
- 1:1 rib knit collar and sleeve hems with double relief stripe
- men's/kids: cut with side seams
- woman's: slight fit cut with side seams



LABEL FREE



F10: XS size available in colours 00, 01

** Material composition may differ: colour 12 - 85 % cotton, 15 % viscose*

PIQUE POLO LS

Polo Shirt men's 221 · women's 231 · kids 241
S-3XL · XS-2XL · 6 years/122 cm-12 y./158 cm

200 g/m²

Pique, 65 % cotton, 35 % polyester

- 1:1 rib knit collar with double relief stripe
- men's/kids: cut with side seams
- women's: slight fit cut with side seams



** Material composition may differ: colour 12 - 85 % cotton, 15 % viscose
For further information about the delivery date of new arrivals, please contact the Sales department.*

PRIME



MERCERIZED COTTON

The process of mercerization consists of immersing the cotton yarn into a bath for the purpose of changing their sections and leveling uneven fibers. The fiber cross-section thus obtains an almost perfect shape. The final material becomes smoother, shinier, and softer. Mercerization results in higher strength and better color stability of the material.

PRIME

Polo Shirt men's 234 • women's 235
S-3XL • XS-2XL

200 g/m²
Pique, 100 % organic cotton GOTS

- 1:1 rib knit collar and sleeve hems
- contrast elements
- men's: cut with side seams
- woman's: slight fit cut with side seams



ORGANIC



LABEL FREE



Organic
Certified by Intertek
GOTS-14289

GRAND

Polo shirt men's 259 • women's 269
S-2XL • S-2XL

160 g/m²
Single Jersey, 100 % mercerized cotton

- 1:1 rib knit collar with a contrast stripe
- contrast elements
- cotton treated by mercerization
- men's: cut with side seam
- ladies: slight fit cut with side seams



MERCERIZATION



LAST CHANCE



PERFECTION

PLAIN



PERFECTION PLAIN

Polo shirt men's 251 · women's 253
S-3XL · S-2XL

200 g/m²
Pique, 95 % cotton, 5 % elastane

- slim fit cut with side seams
- stretch fabric for better dimensional stability
- 1:1 rib knit collar and sleeve hems with a contrast stripe
- contrast elements



URBAN

Polo Shirt men's 219 · women's 220
S-3XL · XS-2XL

200 g/m²
Pique, 65 % cotton, 35 % polyester

- 1:1 rib knit collar and sleeve hems with a contrast stripe
- men's: cut with side seams
- woman's: slight fit cut with side seams



220: XS size available in colours 00, 01

* Material composition may differ: colour 12 - 80 % cotton, 15 % viscose, 5 % elastane



DRESS UP

Dress women's 271
S-2XL

215 g/m²
Pique, 100 % cotton

- slight fit cut with side seams
- 1:1 rib knit collar and sleeve hems
- contrast elements



LAST CHANCE



COLLAR UP

Polo shirt men's 256 · women's 257
S-3XL · S-2XL

215 g/m²
Pique, 100 % cotton

- 1:1 rib knit collar and sleeve hems
- contrast elements
- men's: cut with side seams
- ladies: slight fit cut with side seams



LAST CHANCE

DIAMOND

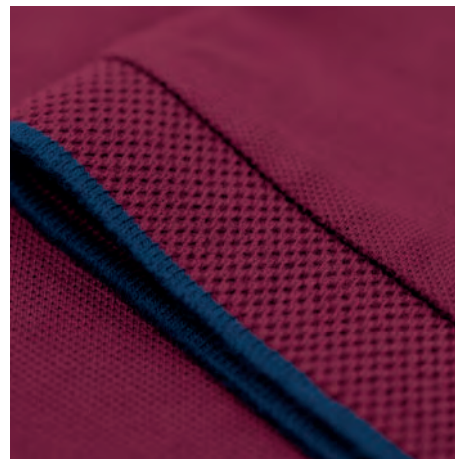
Polo shirt men's 273 · women's 274
S-3XL · S-2XL

215 g/m²
Pique, 100 % cotton

- “bomber” collar
- jacquard knit collar and sleeve hems with a contrast stripe
- contrast elements
- men's: cut with side seams
- ladies: slight fit cut with side seams



LAST CHANCE





COTTON

Polo Shirt men's 212 • women's 213
S-3XL • XS-2XL

170 g/m²
Pique, 100 % cotton

- 1:1 rib knit collar and sleeve hems
- separated pocket for easy branding
- men's: cut with slits in the side seams
- woman's: slight fit cut with slits in side seams

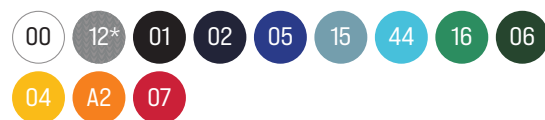


COTTON HEAVY

Polo Shirt men's 215 • women's 216
S-3XL • S-2XL

220 g/m²
Pique, 100 % cotton

- 1:1 rib knit collar and sleeve hems
- men's: cut with slits in the side seams
- woman's: slight fit cut with slits in side seams



213: XS size available in colours 00, 01

* Material composition may differ: colour 03 - 97 % cotton, 3 % viscose; colour 12 - 85 % cotton, 15 % viscose

SINGLE J.

Polo Shirt men's 202 • women's 223
S-3XL • XS-2XL

180 g/m²
Single Jersey, 100 % cotton, silicone finish

- 1:1 rib knit collar
- men's: cut with side seams
- woman's: slight fit cut with side seams



SINGLE J. LS

Polo Shirt men's 211
S-2XL

180 g/m²
Single Jersey, 100 % cotton,

- cut with side seams
- 1:1 rib knit collar and sleeve cuffs
- long sleeves ended by cuffs



202: 3XL size available in colours 00, 01, 02, 05, 07, 12 • 223: XS size available in colours 00, 01
* Material composition may differ: colour 03 - 97 % cotton, 3 % viscose; colour 12 - 85 % cotton, 15 % viscose



RESIST HEAVY POLO

Polo shirt men's R20 · women's R21
S-4XL · XS-3XL

200 g/m²
Pique, 100 % pre-shrunk cotton

- preshrunk cotton resistant to higher temperatures
- 1:1 rib knit collar and sleeve hems
- separated pocket for easy branding
- men's: cut with slits in the side seams
- women's: slight fit cut with slits in side seams



R21: XS size available in colours 00, 01

JOY

Polo shirt men's P21 · women's P22
S-3XL · S-2XL

170 g/m²
Pique, 65 % cotton, 35 % polyester

- 1:1 rib knit collar and sleeve hems
- men's: cut with side seams
- ladies: slight fit cut with side seams



TEAR OFF

VICTORY

Unisex polo shirt 217
S-3XL

150 g/m²
Interlock pique, 100 % polyester

- quick-drying fabric
- ideal for sport and leisure activities
- cut with side seams
- 1:1 rib knit collar

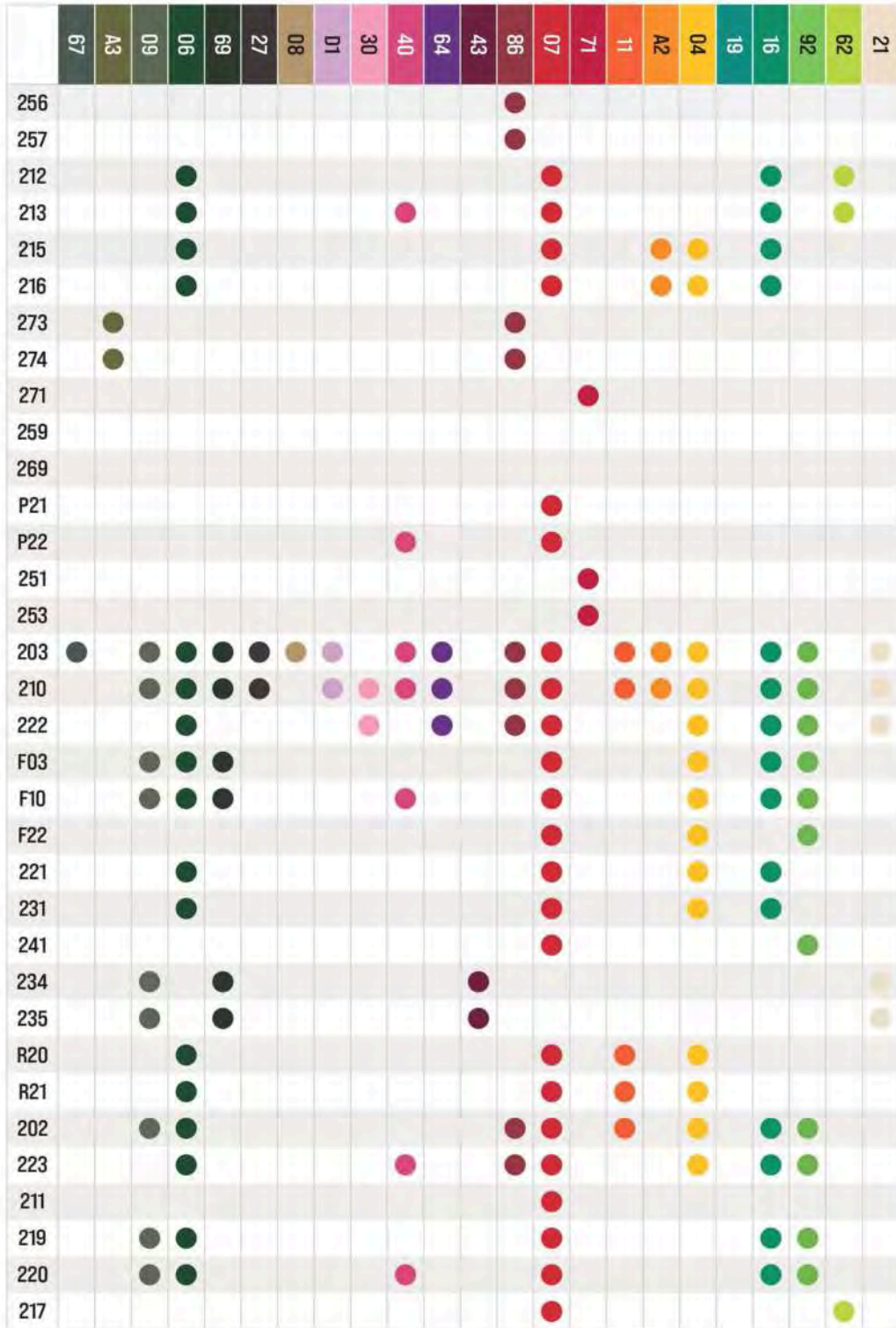


EXTRA DRY

217: 3XL size available in colours 00, 01, 02

POLO SHIRTS

				05	70	14	16	02	01	94	83	36	25	12	A4	03	00	87	77	93	44	59	95	A7	C9
				g/m ²																					
256	Collar up	M	215					●	●						●		○	●							
257	Collar up	W	215					●	●						●		○	●							
212	Cotton	M	170	●			●	●	●					●			○				●				
213	Cotton	W	170	●			●	●	●					●			○				●				
215	Cotton heavy	M	220	●			●	●	●					●			○				●				
216	Cotton heavy	W	220	●			●	●	●					●			○				●				
273	Diamond	M	215					●	●		●				●		○				●				
274	Diamond	W	215					●	●		●				●		○				●				
271	Dress up	W	215					●	●								○				●				
259	Grand	M	160					●	●								○								
269	Grand	W	160					●	●								○								
P21	Joy	M	170	●			●	●	●								○				●				
P22	Joy	W	170	●			●	●	●								○				●				
251	Perfection Plain	M	200		●			●	●					●			○				●				
253	Perfection Plain	W	200		●			●	●					●			○				●				
203	Pique Polo	M	200	●	●	●	●	●	●	●		●		●			○	●			●	●	●	●	●
210	Pique Polo	W	200	●	●	●	●	●	●	●		●		●			○	●			●	●	●	●	●
222	Pique Polo	K	200	●			●	●	●					●			○				●				
F03	Pique Polo Free	M	200	●			●	●	●					●			○				●				
F10	Pique Polo Free	W	200	●			●	●	●					●			○				●				
F22	Pique Polo Free	K	200	●			●	●	●					●			○				●				
221	Pique Polo LS	M	200	●				●	●	●				●			○								
231	Pique Polo LS	W	200	●				●	●					●			○								
241	Pique Polo LS	K	200	●			●	●									○								
234	Prime	M	200					●	●				●				○				●				
235	Prime	W	200					●	●				●				○				●				
R20	Resist Heavy Polo	M	200	●				●	●	●							○								
R21	Resist Heavy Polo	W	200	●				●	●	●							○								
202	Single J	M	180	●	●	●	●	●	●					●			○				●			●	
223	Single J	W	180	●	●	●	●	●	●					●			○				●			●	
211	Single JLS	M	180			●	●	●	●	●							○							●	
219	Urban	M	200	●		●	●	●	●			●		●			○	●			●				
220	Urban	W	200	●		●	●	●	●			●		●			○	●			●				
217	Victory	U	150					●	●								○								



S

H

L

L

L



SHIRTS



Shirts are a timeless classic that always goes in fashion. Elegant cuts and high-quality materials will give you confidence and natural charm. They are suitable not only for the office but also for social events. Choose your favourite shirt and enjoy endless possibilities for combining outfits.



JOURNEY



Premium cotton shirt with easy-care finish designed by leading Czech tailor Roman Humlíček. Features pearl buttons and refined details, available in both men's and women's versions.

JOURNEY

Shirt men's 264 · women's 265
M-3XL · S-2XL

130 g/m²

Micro twill, 100 % cotton, easy care

- designed by leading czech tailor Roman Humlíček
- yarn from extra long staple fibers
- back part with a double yoke and darts
- long sleeves with round cuffs and 2 buttons
- men's: tailored fit cut with side seams
- collar stays
- women's: tailored fit cut with side seams
- front part with waist darts



TAILORED



EASY CARE



STYLE LS

Shirt men's 209 · women's 229
S-3XL · XS-2XL

125 g/m²
Poplin, 100 % cotton

- men's: regular fit cut with side seams
- back part with a double yoke and folds
- long sleeves with round cuffs and 1 button
- patch breast pocket
- woman's: tailored fit cut with side seams
- breast and waist darts
- long sleeves with angled cuffs and 2 buttons



NEW COLOURS



NEW COLOUR



For further information about the delivery date of new arrivals, please contact the Sales department.

DYNAMIC

Shirt men's 262 · women's 263
S-2XL · S-2XL

105 g/m²

men's: Plain weave, 60 % cotton, 40 % polyester, slim fit

110 g/m²

women's: Plain weave, 68 % cotton, 29 % polyamid, 3 % elastane

- tailored fit cut with side seams
- men's: back part with a double yoke and darts
- collar stays
- long sleeves with angled cuffs and 1 button
- women's: fine stretch fabric
- back part with a double yoke
- breast and waist darts
- long sleeves with angled cuffs and 2 buttons



STYLE

Shirt women's 218
S-2XL

125 g/m²
Poplin, 100 % cotton

- tailored fit cut with side seams
- back part with darts
- breast and waist darts
- 3/4 sleeves with straight high cuffs and slits



CHIC

Shirt men's 207 · women's 214
M-3XL · S-2XL

120 g/m²
Poplin, 100 % cotton

- men's: regular fit cut with side seams
- back part with a double yoke and folds
- patch breast pocket
- woman's: back part with a single yoke and darts
- waist darts
- two-piece open-neck shirt collar



FLASH

Shirt men's 260 · women's 261
S-2XL · S-2XL

105 g/m²
men's: Plain weave, 60 % cotton, 40 % polyester, slim fit
110 g/m²
women's: Plain weave, 68 % cotton, 29 % polyamid,
3 % elastane

- tailored fit cut with side seams
- men's: back part with a double yoke and darts
- collar stays
- women's: fine stretch fabric
- back part with a double yoke
- breast and waist darts





SHIRTS

				g/m ²	07	82	06	15	02	01	00	27	07
262	Dynamic	M	105		●				●	●	○		
263	Dynamic	W	105		●				●	●	○		
260	Flash	M	105		●				●		○		
261	Flash	W	110		●				●		○		
207	Chic	M	120				●			●	○		
214	Chic	W	120				●			●	○		
264	Journey	M	130	●		●					○		
265	Journey	W	130	●		●					○		
218	Style	W	125				●			●	○		
209	Style LS	M	125				●	●	●	●	○	●	
229	Style LS	W	125				●	●	●	●	○	●	●



SWEATSHIRTS



S & BOTTOMS

Enter the world of comfort and style with our collection of sweatshirts and sweatpants. Choose from a wide range of cuts, colours and materials to suit your requirements. Whether you're heading out for sports or just strolling around town, our products give you maximum comfort with a modern look.



CLOUD



CLOUD

NEW PRODUCT

Sweatshirt unisex 428
XS-3XL

280 g/m²

French terry, inner brushed, 80 % organic cotton, 20 % recycled polyester (GOTS)

- label free - ready for rebranding
- loose cut with side seams
- low cap sleeves
- kangaroo patch pocket
- 2:2 rib knit bottom hem, cuffs and neckline with 5 % elastane
- brushed inner side



Made with 80% organic materials
Certified by Intertek
GOTS-14289

Sweatshirt made of organic cotton and recycled polyester with GOTS certification. Loose fit, hood with drawstring, and soft brushed inner side for extra comfort.

For further information about the delivery date of new arrivals, please contact the Sales department.



CREW



CREW

NEW PRODUCT

Sweatshirt unisex 426 • kids 427

S-5XL • 122 cm/6 years-158 cm/12 years

280 g/m²

French terry, inner brushed, 60 % cotton, 40 % polyester

- label free - ready for rebranding
- straight cut with side seams
- low cap sleeves
- 2:2 rib knit bottom hem, cuffs and neckline with 5 % elastane
- brushed inner side



Universal sweatshirt with a straight cut and soft fabric with a higher cotton content provides pleasant warmth. Unisex model available also in children's versions and easy to personalize.

426: 4XL, 5XL size available in colours 01, 02, 12

* Material composition may differ: colour 12 - 75 % cotton, 25 % polyester

For further information about the delivery date of new arrivals, please contact the Sales department.



CHILL



CHILL

NEW PRODUCT

Sweatshirt unisex 422 • kids 423
XS-4XL • 6 years/122 cm-12 y./158 cm

280 g/m²
French terry, inner brushed, 60 % cotton, 40 % polyester

- label free - ready for rebranding
- loose cut with side seams
- low cap sleeves
- kangaroo patch pocket
- 2:2 rib knit bottom hem and cuffs with 5 % elastane
- brushed inner side



NEW COLOURS



Trendy sweatshirt with drop shoulders, a loose cut and soft brushed inner side. Comfortable unisex style appreciated by both kids and adults in everyday urban outfits.

422: 4XL size available in colours 00, 01, 02, 05, 06, 07, 12, 69, 87
* Composition may differ - colour 12 - 75 % cotton, 25 % polyester
For further information about the delivery date of new arrivals, please contact the Sales department.



MOON



MOON

Sweatshirt men's 420 · women's 421
S-3XL · XS-2XL

280 g/m²
French terry, brushed inner side,
80 % cotton, 20 % recycled polyester

- loose cut with side seams
- low cap sleeves
- kangaroo welt pockets
- 2:2 rib knit bottom hem and cuffs with 5 % elastane



LABEL FREE



SNAP

Dress women's 419
S-2XL

320 g/m²
French terry, unbrushed inner side, 65 % cotton, 35 % polyester

- slight fit cut with side seams
- above knee length
- 1:1 rib knit bottom hem and cuffs with 5 % elastane



LABEL FREE



LAST CHANCE

*Material composition may differ: colour 12 - 75 % cotton, 25 % viscose

GAFFE



CAPE

Sweatshirt men's 413 · women's 414
S-5XL · XS-2XL

320 g/m²
French terry, inner brushed, 65 % cotton, 35 % polyester

- 2:2 rib knit bottom hem and cuffs with 5 % elastane
- men's: straight cut with side seams
- woman's: slight fit cut with side seams



NEW COLOURS



NEW COLOUR

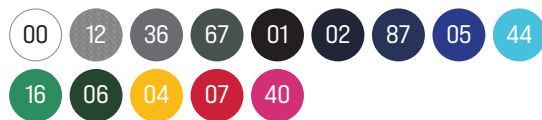


CAPE FREE

Sweatshirt men's F13 · women's F14
S-3XL · S-2XL

320 g/m²
French terry, inner brushed, 65 % cotton, 35 % polyester

- label free - ready for rebranding
- 2:2 rib knit bottom hem and cuffs with 5 % elastane
- men's: straight cut with side seams
- woman's: slight fit cut with side seams



LABEL FREE

413: 4XL size available in colours 01, 02, 04, 05, 07, 12; 5XL size available in colours 01, 02, 12 · 414: XS size available in colours 00, 01, 02, 05, 07, 12
For further information about the delivery date of new arrivals, please contact the Sales department.

TRENDY ZIPPER

Sweatshirt men's 410 · women's 411 · kids 412
S-3XL · XS-2XL · 6 years/122 cm-12 y./158 cm

300 g/m²

French terry, inner brushed, 65 % cotton, 35 % polyester

- full-length molded zipper
- 2:2 rib knit bottom hem and cuffs with 5 % elastane
- men's/Kids: straight cut with side seams
- woman's: slight fit cut with side seams



411: XS size available in colours 01, 02

VOYAGE

Sweatshirt men's 452 · women's 451
S-3XL · XS-2XL

320 g/m²
French terry, unbrushed inner side, 100 % cotton

- full-length metal zipper
- raglan sleeves with decorative stitching
- 2:2 rib knit bottom hem and cuffs with 5 % elastane
- men's: straight cut with side seams
- women's: slight fit cut with side seams



BOMBER

Sweatshirt men's 453 · women's 454
S-2XL · S-2XL

320 g/m²
French terry, unbrushed inner side, 100 % cotton

- full-length metal zipper
- 2:2 rib knit "bomber" collar with 5 % elastane
- dividing seam pockets with a hidden zipper
- 2:2 rib knit bottom hem and cuffs with 5 % elastane
- men's: straight cut with side parts
- women's: cut fitted by side parts



451: XS size available in colours 01, 02

* Material composition may differ: Colour 12 - 85 % cotton, 15 % viscose

ADVENTURE, VIVA

Sweatshirt men's 407 · women's 409

S-3XL · S-2XL

300 g/m²

Men's: French terry, inner brushed, 65 % cotton, 35 % polyester

Woman's: French terry, inner brushed, 97 % cotton, 3 % polyester

- 2:2 rib knit stand up collar and side parts with 5 % elastane
- 2:2 rib knit bottom hem, cuffs and pocket hems with 5 % elastane
men's: straight cut with side parts
- full-length metal zipper
woman's: stretch fabric for better dimensional stability
- cut fitted by side parts
- full-length silver coil zipper



ESSENTIAL

Sweatshirt men's 406
S-4XL

300 g/m²
French terry, brushed inner side,
65 % cotton, 35 % polyester

- straight cut with side seams
- 1:1 rib knit bottom hem, cuffs and neckline with 5 % elastane
- brushed inner side



ZERO

Sweatshirt unisex P41
XS-3XL

260 g/m²
French terry, unbrushed inner side,
50 % cotton, 50 % polyester

- straight cut with side seams
- 1:1 rib knit bottom hem, cuffs and neckline with 5 % elastane



TEAR OFF

406: 4XL size available in colours 01, 02, 12

VERTEX



VERTEX

Sweatshirt men's W42
S-4XL

300 g/m²
Double face interlock knit,
80 % cotton, 20 % polyester

- straight cut with side seams
- raglan sleeves with double stitching
- 2:2 rib knit bottom hem, cuffs and neckline with 5 % elastane
- cuffs with hole for thumb



VERTEX HOODIE

Sweatshirt men's W43
S-4XL

300 g/m²
Double face interlock knit,
80 % cotton, 20 % polyester

- straight cut with side seams
- raglan sleeves with double stitching
- 2 hidden zipper pockets
- 2:2 rib knit bottom hem, cuffs and neckline with 5 % elastane
- cuffs with hole for thumb



MEADOW



MEADOW

NEW PRODUCT

Pants unisex 609 · kids 619
XS-3XL · 6 years/122 cm-12 y./158 cm

280 g/m²
French terry, inner brushed, 60 % cotton, 40 % polyester

- label free - ready for rebranding
- looser leg cut
- elastic waistband, adjustable by drawcord
- side-seam welt pockets
- bottom hem with elastic band



Casual sweatpants in unisex and children's versions with brushed inside and looser fit with drawstring. Recommended to be paired with the CHILL or CREW sweatshirt.

** Material composition may differ: colour 12 - 75 % cotton, 25 % polyester
For further information about the delivery date of new arrivals, please contact the Sales department.*

REST

Sweatpants men's 614 · women's 615
S-3XL · XS-2XL

280 g/m²

French terry, unbrushed inner side, 80 % cotton, 20 % polyester

- ideal for sport and leisure activities
- slightly narrowed leg cut
- 2:2 rib knit waistband with 5 % elastane, adjustable by drawcord
- slant pockets
- 2:2 rib knit bottom hem with 5 % elastane



** Material composition may differ: colour 12 - 75 % cotton, 25 % viscose*

LEISURE

Pants women's 603
S-2XL

200 g/m²
Single Jersey, 95 % cotton, 5 % elastane

- stretch fabric for better dimensional stability
- ideal for sport and leisure activities
- wide elastic waistband
- slant pockets
- bottom hem with elastic band



BALANCE

Leggings women's 610
XS-3XL

190 g/m²
Single Jersey, 95 % cotton, 5 % elastane

- stretch fabric for better dimensional stability
- ideal for sport and leisure activities
- slim fit cut without side seams
- elastic waistband



** Material composition may differ: colour 12 - 80 % cotton, 15 % viscose, 5 % elastane*



TWO IN ONE

Skirt women's 604
XS-XL

200 g/m²
Single Jersey, 95 % cotton, 5 % elastane

- 2 in 1 - skirt with sewn-in shorts
- stretch fabric for better dimensional stability
- ideal for sport and leisure activities
- short cut in the "A" shape
- wide elastic waistband, adjustable by drawcord



MILES

Shorts men's 612 · kids 613
S-3XL · 6 years/122 cm-12 y./158 cm

150 g/m²
Interlock pique, 100 % micro polyester

- quick-drying fabric
- ideal for sport and leisure activities
- elastic waistband, adjustable with drawcord
- small inner pocket
- side-seam pockets



* Material composition may differ: colour 12 - 80 % cotton, 15 % viscose, 5 % elastane

COMFY

Shorts men's 611
M-3XL

300 g/m²

French terry, unbrushed inner side, 65 % cotton, 35 % polyester

- ideal for sport and leisure activities
- elastic waistband, adjustable by drawcord
- side-seam welt pockets



SWEATSHIRTS & BOTTOMS

			g/m ²	05	15	02	01	94	36	12	03	00	87	60	93	44	A7	09	67	09	28	51
407	Adventure	M	300	●		●	●			●										●		
610	Balance	W	190			●	●					○										
453	Bomber	M	320			●	●			●												
454	Bomber	W	320			●	●			●												
413	Cape	M	320	●		●	●		●	●	○	○	●	●		●		●	●		●	●
414	Cape	W	320	●		●	●		●	●	○	○	●	●		●		●	●		●	●
F13	Cape Free	M	320	●		●	●		●	●		○	●			●			●			
F14	Cape Free	W	320	●		●	●		●	●		○	●			●			●			
422	Chill	U	280	●		●	●			●		○	●									
423	Chill	K	280	●	●	●	●			●			●									
428	Cloud	U	280			●	●			●										●		
611	Comfy	M	300			●	●			●												
426	Crew	U	280	●		●	●			●		○	●									
427	Crew	K	280	●	●	●	●			●			●									
406	Essential	M	300	●		●	●			●	○	○	●						●			
603	Leisure	W	200			●	●			●		○										
609	Meadow	U	280			●	●			●												
619	Meadow	K	280			●	●			●												
612	Miles	M	150	●		●	●			●		○										
613	Miles	K	150	●		●	●			●		○										
420	Moon	M	280			●	●			●		○		●			●	●		●		●
421	Moon	W	280			●	●			●		○		●			●	●		●		●
614	Rest	M	280			●	●			●		○										
615	Rest	W	280			●	●			●		○										
419	Snap	W	320			●	●			●			●									
410	Trendy Zipper	M	300	●		●	●		●	●	○	○				●			●			
411	Trendy Zipper	W	300	●		●	●		●	●	○	○				●			●			
412	Trendy Zipper	K	300	●			●			●						●						
604	Two in one	W	200			●	●			●		○										
W42	Vertex	M	300				●	●		●					●							
W43	Vertex Hoodie	M	300				●	●		●					●							
409	Viva	W	300	●		●	●			●		○										
452	Voyage	M	320			●	●			●												
451	Voyage	W	320			●	●			●												
P41	Zero	U	260	●		●	●			●		○										

	06	69	27	08	D1	30	40	43	86	23	71	07	11	04	19	16	62	85	21
407	●											●							
409												●				●			
610																			
453												●							
454												●							
413	●	●	●						●			●		●		●			●
414	●	●	●		●		●		●			●		●		●			●
F13	●											●		●		●			
F14	●						●					●		●		●			
422	●	●				●			●			●				●			●
423		●				●			●			●				●			●
428								●											●
611																			
426	●	●							●			●				●			●
427		●							●			●				●			●
406	●	●							●			●	●	●		●			
603																			
609																			●
619																			●
612												●							
613												●							
420					●							●						●	●
421					●	●		●				●						●	●
614																			
615																			
419							●					●							
410	●	●										●		●		●	●		
411	●	●					●					●		●		●	●		
412		●										●				●			
604												●							
W42										●									
W43										●									
452												●							
451												●							
P41	●											●							





FLEECE



Fleece is a contemporary fabric with outstanding thermal insulation properties. It is becoming increasingly popular for sports and outdoor activities.

FROSTY



FROSTY

Fleece men's 527 · women's 528 · kids 529
S-4XL · S-3XL · 122 cm/6 years-158 cm/12 years

220 g/m²

Fleece, 100 % polyester, antipilling finish

- insulating fabric
- full-length coil zipper with chin protection
- pockets with coil zipper
- bottom hem adjustable by elastic drawstring
- contrast elements
- woman's: slight fit cut



ANTIPELLING



ANTIPELLING FINISH

Antipilling finish minimizes the release of fibers and prevents fabric's pilling. This process results in fibres fixation and stabilization. It reduces damaging of the upper part under excessive use and friction and extends the product lifetime and functionality.

527: S size available in colours 01, 02

JACKET

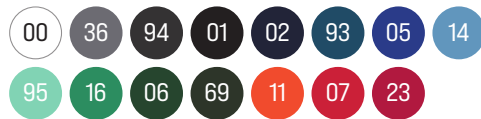


JACKET

Fleece men's 501 · women's 504
S-4XL · XS-2XL

280 g/m²
Fleece, 100 % polyester, antipilling finish

- insulating fabric
- full-length molded zipper
- pockets with molded zipper
- bottom hem adjustable by elastic drawstring
- sleeve hems with elastic band
- women's – slight fit cut



NEW COLOURS



JACKET HI-Q

Fleece unisex 506
S-3XL

360 g/m²
Fleece, 100 % polyester, antipilling finish,
Complementary material: Rip Stop, 100 % polyamide,
inner PU coating

- highly insulating fabric
- shoulders covered by a waterproof, abrasion-resistant fabric
- full-length molded zipper
- pockets with molded zipper
- bottom hem with elastic band
- sleeve hems adjustable by velcro



501: 4XL size available in colours 01, 02, 05, 23, 94
For further information about the delivery date of new arrivals, please contact the Sales department.

NEXT



EXIT

Fleece vest unisex 525
S-3XL

220 g/m²
Fleece, 100 % polyester, antipilling finish

- insulating fabric
- full-length coil zipper with chin protection
- pockets with coil zipper
- bottom hem adjustable by elastic drawstring
- contrast elements



ANTIPELLING



LAST CHANGE

NEXT

Fleece vest unisex 518
XS-4XL

280 g/m²
Fleece, 100 % polyester, antipilling finish

- insulating fabric
- full-length coil zipper
- welt pockets with coil zipper
- bottom hem adjustable by elastic drawstring



NEW COLOURS



NEW COLOUR



ANTIPELLING



WASH

518: 4XL size available in colours 00, 01, 02, 05, 23
For further information about the delivery date of new arrivals, please contact the Sales department.

VERTEX

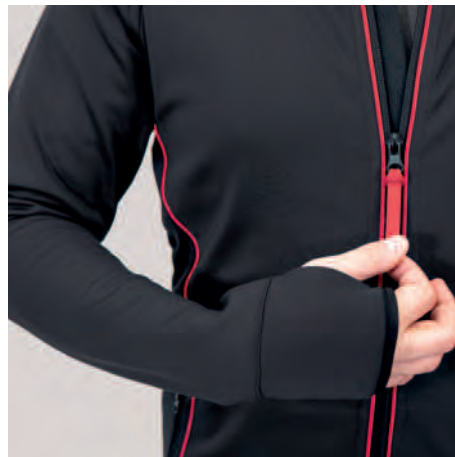
Stretch fleece men's W41
S-3XL

280 g/m²
Stretch fleece, 95 % micro polyester, 5 % elastane

- smooth stretch quick-drying fabric
- straight cut with side seams
- full-length reverse coil zipper with chin protection
- raglan sleeves
- cuffs with hole for thumb
- zip pockets

94 01 93 23

WARM ELASTANE EXTRA DRY WASH 30 LAST CHANCE



DIRECT

Stretch fleece men's 417 · women's 418
S-3XL · S-2XL

240 g/m²

Stretch fleece, 95 % micro polyester, 5 % elastane

- smooth stretch quick-drying fabric
- ideal for sport and leisure activities
- full-length reverse coil zipper
- raglan sleeves
- men's: straight cut with side parts
- women's: cut fitted by side parts



CASUAL



EFFECT

Fleece unisex 530
S-3XL

360 g/m²
Fleece, 100 % polyester, antipilling finish;
complementary material: plain weave, 100 % polyamide

- highly insulating fabric
- shoulders and elbows covered by a waterproof, abrasion-resistant fabric
- full-length molded zipper
- pockets with molded zipper
- sleeves ended by cuffs
- bottom hem adjustable by elastic drawstring



CASUAL

Softshell jacket men's 550
S-3XL

350 g/m²
Knitted softshell: 100 % polyester; micro fleece - 100 % polyester
Softshell: 96 % polyester, 4 % elastane; micro fleece - 100 % polyester,
Lining: 100 % polyester

- 2-layer softshell
- combination of knitted and plain fabric
- full-length reverse coil zipper
- sleeve hems adjustable by velcro
- pockets with reverse coil zipper
- 2 inner pockets
- contrast elements





FLEECE

			g/m ²	05	14	02	01	94	80	36	24	12	03	00	93	84	44	95	06	69	01	40	49	43	23	07	04	11	16	92
550	Casual	M	350						●				●		●											●				
417	Direct	M	240			●	●					●													●					
418	Direct	W	240			●	●					●		○											●					
530	Effect	U	360	●		●	●	●		●					●				●	●					●	●		●		
525	Exit	U	220	●		●	●				●			○			●						●		●				●	
527	Frosty	M	220	●		●	●				●						●								●				●	
528	Frosty	W	220	●		●	●				●						●						●		●				●	
529	Frosty	K	220			●	●										●								●					
501	Jacket	M	280	●	●	●	●	●		●				○	●				●	●					●	●		●	●	
504	Jacket	W	280	●	●	●	●	●		●				○	●			●	●		●				●	●		●	●	
506	Jacket Hi-Q	U	360	●		●	●	●		●									●	●					●	●				
518	Next	U	280	●	●	●	●	●		●				○	●			●	●	●	●		●		●	●		●	●	
W41	Vertex	M	280				●	●							●										●					





DOOR

The functional clothing in this category is designed for outdoor activities in variable climatic conditions. They are ideal for movement in nature, work and leisure. Selected materials provide comfort, breathability and protection from wind and rain.



TRAIL



Lightweight sports jacket made of double-layer softshell with a hood and adjustable hem. Inner fleece with anti-pilling treatment provides pleasant warmth.

TRAIL

NEW PRODUCT

Softshell Jacket men's 548 · women's 549
S-4XL · XS-3XL

280 g/m²
Softshell: 96 % polyester, 4 % elastane, 100D,
4-Way Stretch, water repellent finish
Inner side: 100 % polyester - micro fleece,
antipiling finish

- label free - ready for rebranding
- full-length reverse coil zipper with chin protection
- hood and bottom hem adjustable by elastic drawstring
- sleeve hems adjustable by velcro
- welt pockets with reverse coil zipper
- breast pocket
- men's: straight cut with side parts
- women's: slight fit cut



TRAIL

NEW PRODUCT

Softshell Vest men's 568 · women's 569
S-4XL · XS-3XL

280 g/m²
Softshell: 96 % polyester, 4 % elastane, 100D,
4-Way Stretch, water repellent finish, Inner side:
100 % polyester - micro fleece, antipiling finish

- label free - ready for rebranding
- full-length reverse coil zipper with chin protection
- bottom hem adjustable by elastic drawstring
- welt pockets with reverse coil zipper
- breast pocket
- women's: slight fit cut



For further information about the delivery date of new arrivals, please contact the Sales department.

PERFORMANCE



PERFORMANCE

Softshell jacket men's 522 · women's 521
S-4XL · XS-3XL

300 g/m²

Softshell: 94 % polyester, 6 % elastane; TPU membrane; Micro fleece,
100 % polyester, waterproof 14 000 mm, breathable 2 000 g/m²/24h

- full-length reverse coil zipper with chin protection
- removable hood
- sleeve hems adjustable by velcro
- bottom hem adjustable by elastic drawstring
- pockets with reverse coil zipper
- inner breast zip pocket with access for branding
- women's: slight fit cut



Three-layer softshell jacket with TPU membrane and 14,000 mm waterproof rating protects in adverse weather. It is breathable, practical, and comes in unisex design.

522: 4XL size available in colours 01, 02, 05, 07, 36
521: 3XL size available in colours 01, 02, 07

CROSS

hybrid Jacket men's 555 · women's 556
S-3XL · XS-2XL

Softshell: 250 g/m²

Plain weave: 100 % polyamide, water repellent finish,

Mid layer: 100 % polyester; Softshell: 90 % polyester, 10 % elastane; Lining: 100 % polyester, water repellent finish

- combination of quilted and softshell fabric
- stand up collar with snap button
- full-length coil zipper
- side pockets with coil zipper
- inner breast zip pocket
- access for branding in back lining
- men's: cut with side parts
- women's: cut fitted by side parts



Premium hybrid jacket combining padded and softshell materials with water-repellent finish.
An inner chest pocket enhances the functional design.

CROSS

hybrid Vest men's 557 • women's 558
S-3XL • XS-2XL

Softshell: 250 g/m²

Plain weave: 100 % polyamide, water repellent finish,

Mid layer: 100 % polyester; Softshell: 90 % polyester, 10 % elastane; Lining: 100 % polyester, water repellent finish

- combination of quilted and softshell fabric
- full-length coil zipper with chin protection
- side pockets with coil zipper
- inner breast zip pocket
- access for branding in back lining
- men's: cut with side parts
- women's: cut fitted by side parts





EVEREST

Jacket men's 552 · women's 551
S-3XL · XS-2XL

Plain weave, micro fiber - 100 % polyamide,
mid layer: 100 % polyester

- lightweight quilted warm fabric
- full-length reverse coil zipper with chin protection
- pockets with reverse coil zipper
- access for branding in back lining
- trimmed by elastic stripe
- contrast elements (except 01 colour)
- women's: cut fitted by side parts



EVEREST

Vest men's 553 · women's 554
S-3XL · XS-2XL

Plain weave, micro fiber - 100 % polyamide,
mid layer: 100 % polyester

- lightweight quilted warm fabric
- full-length reverse coil zipper with chin protection
- pockets with reverse coil zipper
- access for branding in back lining
- trimmed by elastic stripe
- contrast elements (except 01 colour)
- women's: cut fitted by side parts



PHANTOM

Jacket men's 540 · women's 541
S-3XL · XS-2XL

Plain weave, 100 % polyester, water repellent finish
mid layer: 100 % polyester

- foldable into the inner pocket
- lightweight quilted warm fabric
- full-length molded zipper with chin protection
- pockets with molded zipper
- inner pocket with velcro
- trimmed by elastic stripe
- access for branding in side lining
men's: cut with side parts
- women's: cut fitted by side parts



VERTEX

Winter softshell jacket men's W55
S-3XL

320 g/m²

Softshell: 94 % polyester, 6 % elastane; TPU membrane;
Micro fleece: 100 % polyester, antipilling finish;
mid layer and lining: 100 % polyester,
waterproof 10 000 mm, breathable 4 000 g/m²/24h

- 3-layer warm softshell with membrane
- full-length zipper with chin protection and flap
- removable, adjustable hood with lining
- adjustable sleeve hems with velcro
- pockets with waterproof reverse coil zipper
- patch zipper pockets
- access for branding in side lining
- curved and slightly prolonged back part
- contrast elements

94

01

23



ELASTANE



ANTIPILLING



SOFTSHELL



WINDPROOF



WATERPROOF



BREATHABLE



WASH



LAST CHANCE



PACIFIC 3 in 1

Jacket men's 533 · women's 534
S-3XL · XS-2XL

130 g/m²

Upper jacket: plain weave, 100 % polyester,
inner TPU white lamination, waterproof 8 000 mm,
breathable 5 000 g/m²/24 h.

220 g/m²

Inner fleece: 100 % polyester, antipilling finish
on both sides

- multipurpose use 3 in 1
- Upper jacket:
 - waterproof zipper with chin protection
 - removable hood with reinforced peak
 - hood and bottom hem adjustable by elastic drawstring
 - sleeve hems adjustable by velcro
 - welt pockets with reverse coil zipper
 - taped seams
 - access for branding inside lining
- Woman's: slight fit cut



- Inner fleece:
 - removable inner fleece jacket
 - full-length molded zipper
 - welt pockets
 - bottom hem adjustable by elastic drawstring



ANTIPILLING WINDPROOF WATERPROOF BREATHABLE 3 IN 1 LAST CHANCE 534



RAINBOW



Functional jacket with hood, taped seams, and reflective details withstands wind and rain. Thanks to branding access, it is also suitable as corporate outdoor gear.

RAINBOW

Jacket men's 538 · women's 539
S-3XL · XS-2XL

105 g/m²

Plain weave, 100 % polyester, TPU membrane, BIONIC FINISH® ECO hydrophobic finish, waterproof 5 000 mm, breathable 3 000 g/m²/24h

Lining: mesh, 100 % polyester

- waterproof zipper with chin protection · removable drawstring hood · side pockets with reverse coil zipper
- inner chest pocket with velcro · taped seams · access for branding in side lining
- the lower side hem with elastic band · ventilation at the back part · reflective elements
- men's: cut with side parts · women's: cut fitted by side parts



NEW COLOURS



02/00

01/01

05/02

02/19

36/90

02/07

09/09

83/83



 **BIONIC
FINISH® ECO**
WATER REPELLENCY



For further information about the delivery date of new arrivals, please contact the Sales department.

NANO

Softshell jacket men's 531 · women's 532
S-3XL · XS-2XL

280 g/m²

Softshell: 96 % polyester, 4 % elastane, Nanotex® aquapel finish; TPU membrane;
perforated micro fleece, 100 % polyester, waterproof 5 000 mm, breathable 600 g/m²/24h

- impressive softshell texture
- full-length coil zipper with flap
- drawstring hood
- hood and sleeve hems adjustable by velcro
- pockets with reverse coil zipper
- contrast elements
- Woman's: slight fit cut




NANOTEX®
AQUAPEL™

Certified material that has been modified with the environmentally friendly Nanotex Aquapel PFAS free treatment. The result fabric repels liquids, extends the lifetime, retains natural softness and breathability. When a liquid comes into contact with the fabric, rather than sinking into the fibers, the fluid beads roll right off the surface without leaving a mark.

WINDY

Coat unisex 524
S-2XL

Plain weave, 100 % polyester, PA finish

- lightweight windproof fabric
- full-length coil zipper
- hidden hood in the collar
- hood and bottom hem adjustable by elastic drawstring
- welt pockets
- folds into separate small bag for easy carry



BODY WARMER

Men's vest 509
S-3XL

300 g/m²

Rip Stop, 100 % polyamide, inner silver coating;
lining: Fleece, 100 % polyester, antipilling finish

- full-length molded zipper with chin protection
- bottom hem adjustable by elastic drawstring
- inner pocket with velcro
- access for branding in side lining
- contrast elements





OUTDOOR

				05	02	01	94	83	36	25	12	A4	00	87	19	A3	09	06	69	23	71	07	05	90
			g/m ²																					
509	Body Warmer	U	300	●	●	●	●											●	●			●		
555	Cross	M	250		●	●		●				●				●								
556	Cross	W	250		●	●		●				●				●								●
557	Cross	M	250		●	●		●																
558	Cross	W	250		●	●		●																●
552	Everest	M	/		●	●						●				●						●		
551	Everest	W	/		●	●						●				●						●		
553	Everest	M	/		●	●						●				●						●		
554	Everest	W	/		●	●						●				●						●		
531	Nano	M	280		●	●			●														●	
532	Nano	W	280		●	●			●														●	
533	Pacific 3 in 1	M	130/220			●			●														●	
534	Pacific 3 in 1	W	130/220			●			●														●	
522	Performance	M	300	●	●	●			●		●								●				●	
521	Performance	W	300	●	●	●			●		●								●				●	
540	Phantom	M	/		●	●								●					●				●	
541	Phantom	W	/		●	●								●					●				●	
538	Rainbow	M	105		●	●		●					○		●		●						●	●
539	Rainbow	W	105		●	●		●					○		●		●						●	●
548	Trail	M	280	●	●	●	●												●				●	
549	Trail	W	280	●	●	●	●												●				●	
568	Trail	M	280	●	●	●	●												●				●	
569	Trail	W	280	●	●	●	●												●				●	
W55	Vertex	M	320			●	●														●			
524	Windy	U	/	●	●	●																		



A C S



SORIES

Our range includes clothing and high-quality and practical accessories to make your everyday life easier.



BEANIE



BEANIE

Cap unisex 315

66 g

Rib knit, 100 % polyacrylic

- double-layered 1:1 rib knit
- insulating fabric
- shaped by stitching
- folded bottom edge 7 cm wide



LABEL FREE



RAP 5P

Cap unisex 301
adjustable

340 g/m²

Twill, 100 % cotton

- stitched flat peak
- embroidered air holes
- sweatband
- size adjustable by plastic pressbuttons
- bonded front panel



For further information about the delivery date of new arrivals, please contact the Sales department.

5P



5P

Cap unisex 307
adjustable

340 g/m²
Brushed twill, 100 % cotton

- bonded front panel
- stitched, slightly curved peak
- embroidered air holes
- sweatband
- size adjustable by brass clip



NEW COLOURS



6P

Cap unisex 305
adjustable

340 g/m²
Brushed twill, 100 % cotton

- bonded 2 front panels
- stitched, slightly curved peak
- embroidered air holes
- sweatband
- size adjustable by brass clip



NEW COLOURS





SANDWICH 6P

Cap unisex 306
adjustable

340 g/m²
Brushed twill, 100 % cotton

- bonded 2 front panels
- stitched, slightly curved peak with a contrast stripe
- embroidered air holes
- sweatband
- size adjustable by brass clip



6P KIDS

Cap kids 303
adjustable

340 g/m²
Brushed twill, 100 % cotton

- bonded 2 front panels
- stitched, slightly curved peak
- embroidered air holes
- sweatband
- size adjustable by velcro




NEW COLOUR

NEW COLOURS



For further information about the delivery date of new arrivals, please contact the Sales department.

SUNSHINE

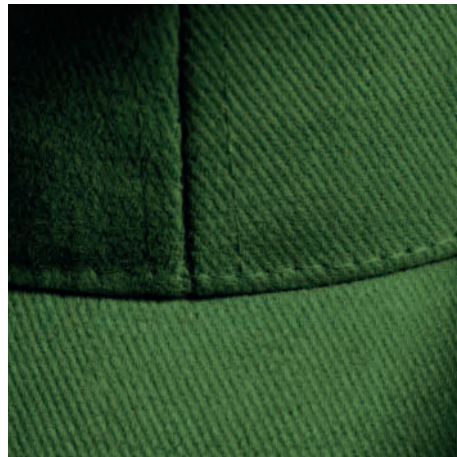
Cap unisex P31
adjustable

155 g/m²
Twill, 100 % cotton

- bonded 2 front panels
- stitched, slightly curved peak
- embroidered air holes
- sweatband
- size adjustable by velcro



TEAR OFF



CLASSIC



CLASSIC

Hat unisex 304
uni · circumference 61 cm

260 g/m²
Brushed twill, 100 % cotton

- embroidered air holes
- sweatband
- trimmed inner seams



TWISTER

Scarf unisex/kids 328
uni · 50 × 26 cm

135 g/m²
Single Jersey, 100 % polyester

- tubular cut
- quick-drying fabric



CARRY



CARRY

Shopping bag 901

uni · bag dimension 42 x 38 cm

280 g/m²

Plain weave, 100 % cotton

- cut with side parts
- cross stitching on straps for higher durability
- straps 70 x 2,5 cm



SHOPPER

Shopping bag 921

uni · bag dimension 45 x 40 cm

195 g/m²

Plain weave, 100 % cotton

- cross stitching on straps for higher durability
- straps 70 x 2,5 cm





HANDY

Shopping bag 900
uni • bag dimension 42 x 38 cm

90 g/m²
Plain weave, 100 % cotton

- cross stitching on straps for higher durability
- straps 60 x 2,5 cm



ENERGY

Gymsack unisex/kids 912
uni · gymsack dimension 45 x 34 cm

70 - 80 g/m²
Oxford, 100 % polyester

- 2 polyester drawstrings in 01 colour
- reflective elements in lower corners
- interior zip pocket 20 x 23 cm



EASYGO

Gymsack unisex/kids 922
uni · gymsack dimension 47 x 37 cm

195 g/m²
Plain weave, 100 % cotton

- 2 drawstrings from polyester in shell colour
- reinforcement of corners with double material and metal rings
- interior zip pocket 20 x 23 cm



ORGANIC TOWEL

Hand towel 916 · towel 917 · bath towel 918

30 × 50 cm, bordure: 3,5 cm, 1,5 cm · 50 × 100 cm, bordure: 3,5 cm, 1,5 cm · 70 × 140 cm, bordure: 3,5 cm, 1,5 cm

450 g/m²

Terry, 100 % organic cotton GOTS

- certified organic cotton
- heavy weight woven terry
- decorative double bordure
- soft and highly absorbent fabric
- label useful as a hanging loop
- gift suitable for embroidery



Organic
Certified by Intertek
GOTS-14289

Towels made of organic cotton with GOTS certification stand out for their softness and absorbency. The border adds a decent look, while the hanging loop provides practicality. Suitable for home use as well as embroidery.

BAMBOO TOWEL • BAMBOO BATH TOWEL

Towel 951 • Bath Towel 952

50 x 100 cm • 70 x 140 cm • bordure: 7,5 cm

450 g/m²

Terry, 70 % viscose (bamboo), 30 % cotton

- heavy weight bamboo woven terry
- decorative bordure with satin yarns
- soft and highly absorbent fabric
- label useful as a hanging loop
- luxury gift suitable for embroidery



LAST CHANCE

TOWEL 450 • BATH TOWEL 450

Towel 903 • bath towel 905

50 x 100 cm, bordure 3,5 cm • 70 x 140 cm, bordure 3,5 cm

450 g/m²

Terry, 100 % cotton

- heavy weight cotton woven terry
- decorative bordure on both sides
- soft and absorbent fabric
- label useful as a hanging loop
- gift suitable for embroidery



NEW COLOURS



NEW COLOUR

For further information about the delivery date of new arrivals, please contact the Sales department.



ACCESSORIES

			g/m ²	05	70	14	19	02	01	94	83	25	12	00	87	44	67	09	06	69
307	5P	U	340	●	●	●	●	●	●			●		○		●	●	●	●	●
305	6P	U	340	●	●	●	●	●	●			●		○		●	●	●	●	●
303	6P KIDS	K	340	●			●	●	●					○						●
952	Bamboo bath towel	U	450									●		○						
951	Bamboo towel	U	450									●		○						
905	Bath towel 450	U	450	●				●	●		●	●		○		●				
315	Beanie*	U	66	●					●	●			●	○	●			●	●	
901	Carry	U	280	●					●					○						
304	Classic	U	260	●			●	●	●					○					●	
922	Easygo	U	195	●					●					○						
912	Energy	U	70 - 80			●			●					○		●				
900	Handy	U	90	●					●					○						
916	Organic	U	450					●				●		○						
917	Organic	U	450					●				●		○						
918	Organic	U	450					●				●		○						
301	Rap 5P	U	340	●				●	●			●		○						
306	Sandwich 6P	U	340	●				●	●			●		○			●		●	
921	Shopper	U	195	●					●					○						
P31	Sunshine	U	155	●				●	●					○					●	
903	Towel 450	U	450	●				●	●		●	●		○		●				
328	Twister	U	135	●					●					○		●				

*Beanie - g/pc

	27	26	08	30	40	89	43	86	07	11	A2	04	16	92	62	90	10	21
307			●	●				●	●			●	●	●	●			
305			●	●			●	●	●		●	●	●	●	●			
303				●					●	●		●		●	●			
952	●	●																●
951	●	●																●
905								●	●									●
315								●	●			●						●
901																	●	
304								●	●			●						
922								●	●								●	
912								●	●					●		●		
900								●	●								●	
916																		●
917																		●
918																		●
301					●			●	●									
306	●		●					●	●			●	●					
921								●	●								●	
P31								●	●	●						●		
903								●	●									●
328						●		●	●							●		







RIMECK®

WORKWEAR MADE REAL

The RIMECK® brand effectively melds the rigorous demands of workwear with the latest fashion trends. Our products not only look great but also withstand the rigours of everyday wear. Each piece must satisfy four essential criteria - striking design, meticulous craftsmanship, top-quality materials, and a primary focus on your safety. Rest assured, we are committed to this principle.



LUXURY COLLECTION BY RIMECK®

The VERTEX collection combines technologically advanced fibers, comfort and an outdoor look. Workwear can thus be highly durable, flexible and stylish at the same time!

CERTIFICATION - W07

EN ISO 13688:2013/A1:2021 – Protective Plaining - this international standard specifies the general requirements for the implementation of protective workwear in terms of ergonomics, safety, size designation, wearout, marking of protective Plaining and the information which is supplied by the protective Plaining manufacturer.

EN 14404:2004+A1:2010 – Personal protective equipment - Knee pads for kneeling work - The standard specifies requirements for knee protection for kneeling work where there is a risk of injury due to surface mechanical effects. The protectors must be harmless to health and safe for the users.



WATER RESISTANT TREATMENT (W55)

The waterproof TPU membrane resists moisture penetration very well while maintaining the flexibility of the entire material. Water column 10 000 mm.



BREATHABLE MATERIAL (W55)

The 3-layer material helps to regulate water vapour, reliably moving it away from the body and creating a feeling of comfort. Breathability of 4,000 g/m²/24 hours.



THERMAL REFLECTIVE ZONE (W55)

Thermo reflective zone on the back.



ANTI-SOILING FINISH (W07)

The ability of the top material to repel liquid, dirt and greasy dirt.



VERTEX

Winter softshell jacket men's W55
S-3XL

320 g/m²

Softshell: 94 % polyester, 6 % elastane; TPU membrane;

Micro fleece: 100 % polyester, antipilling finish;

mid layer and lining: 100 % polyester, waterproof 10 000 mm, breathable 4 000 g/m²/24h

94 01 23





VERTEX

Work trousers men's W07
44-62; prolonged - 48-58

100 % polyamid 310 g/m², 210 g/m²
Oxford, 66 % polyamide, 34 % cotton, anti-soiling finish,

94 01

ANTI-SOILING WASH 40 LAST CHANCE



 **EN ISO 13688/A1**
EN 14404 + A1
1 (type 2, only with A99)



VERTEX

Stretch fleece men's W41
S-3XL

280 g/m²

Stretch fleece, 95 % micro polyester, 5 % elastane

94 01 93 23



WARM



ELASTANE



EXTRA DRY



WASH 30



LAST CHANCE





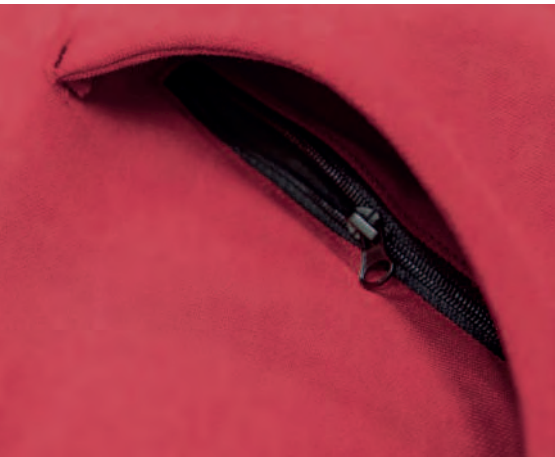
VERTEX

Sweatshirt men's W42
S-4XL

300 g/m²

Double face interlock knit, 80 % cotton, 20 % polyester





VERTEX HOODIE

Sweatshirt men's W43
S-4XL

300 g/m²
Double face interlock knit, 80 % cotton, 20 % polyester





WOODY

Work bib trousers men's W02
44/46, 48/50, 52/54, 56/58, 60/62

270 g/m²
Twill, 100 % cotton

- waistband with elastic back • 8 multifunctional pockets
- double stitching for extra durability • retroreflective elements

94 02

60
WASH

LAST CHANCE

*adjustable elastic
braces*

*side with button
fastener*

*multifunctional
pockets - for a phone,
pens, personal items*

loop for a hammer

*double-layer material
around the knees
and buttocks*



WOODY W51, W01

Jacket men's W51 • Work trousers W01
44/46, 48/50, 52/54, 56/58, 60/62

270 g/m²
Twill, 100 % cotton

- jacket: full-length molded zipper with flap • folds on the back part
- 8 multifunctional pockets • rib knit sleeve cuffs with 3 % elastane
 - the lower side hem with elastic band • double stitching for extra durability • retroreflective elements

- work trousers: waistband with elastic sides • 7 multifunctional pockets
- plastic D-ring and carabiner for keys and ID cards • double stitching for extra durability
 - retroreflective elements

94 02

60
WASH

LAST CHANCE

hanging loop

collar and flap
with snap fasteners

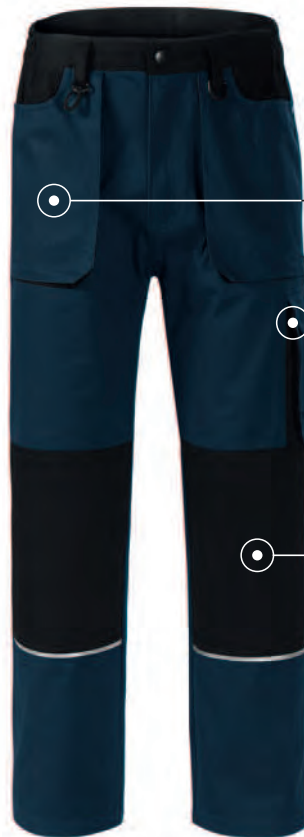
enclosable
multifunctional pockets
- for a phone, pens,
personal items



multifunctional pockets
- for a phone, pens,
personal items

loop for a hammer

double-layer
material around
the knees and buttocks



WOODY W52, W05

Work vest men's W52 · Shorts W05

44/46, 48/50, 52/54, 56/58, 60/62

270 g/m²

Twill, 100 % cotton

- work vest: full-length molded zipper with flap · folds on the back part · 8 multifunctional pockets
- the lower side hem with elastic band · double stitching for extra durability · retroreflective elements

- shorts: waistband with elastic sides · 7 multifunctional pockets
- double stitching for extra durability · retroreflective elements

94 02

60
WASH

LAST CHANCE

hanging loop

*collar and flap
with snap fasteners*

*enclosable multifunctional
pockets –
for a phone, pens,
personal items*



*multifunctional pockets
– for a phone,
pens, personal items*

loop for a hammer

*double-layer
material around
the buttocks*





RESIST

T-shirt men's R01 · women's R02
S-4XL · S-3XL

160 g/m²
Single Jersey, 100 % pre-shrunk cotton

- pre-shrunk cotton resistant to higher temperatures
- neckline trimmed with 1:1 rib knit fabrics
- men's: cut with side seams
- women's: slight fit cut with side seams



60 95
COLOR WHITE



RESIST HEAVY

T-shirt men's R03 · women's R04
S-4XL · S-3XL

200 g/m²
Single Jersey, 100 % pre-shrunk cotton

- pre-shrunk cotton resistant to higher temperatures
- neckline trimmed with 1:1 rib knit fabric
- men's – cut with side seams
- women's – slight fit cut with side seams



60 95
COLOR WHITE

RESIST HEAVY POLO

Polo shirt men's R20 · women's R21
S-4XL · XS-3XL

200 g/m²
Pique, 100 % pre-shrunk cotton

- preshrunk cotton resistant to higher temperatures
- 1:1 rib knit collar and sleeve hems
- separated pocket for easy branding
- men's: cut with slits in the side seams
- women's: slight fit cut with slits in side seams



60 95
COLOR WHITE

RESIST LS

T-shirt unisex R05
S-3XL

160 g/m²
Single Jersey, 100 % pre-shrunk cotton

- pre-shrunk cotton resistant to higher temperatures
- cut with side seams
- neckline trimmed with 1:1 rib knit fabric
- 1:1 rib knit cuff



60 95
COLOR WHITE

R21: XS size available in colours 01, 02



COLORMIX

T-shirt unisex 109
S-4XL

200 g/m²
Single Jersey, 100 % cotton

- cut with side seams
- 1:1 rib knit neckline hem with 5 % elastane



01/94/01 07/01/00 14/02/00 01/44/01 01/16/01 01/62/01 01/04/01 01/11/00 01/07/00

STREET LS

T-shirt unisex 130
S-4XL

180 g/m²
Single Jersey, 100 % cotton

- cut with side seams
- narrow 1:1 rib knit neckline hem with 5 % elastane
- 1:1 rib knit cuff with 5 % elastane



00/00 94/01 01/01 02/14 05/05 06/01 11/01 23/67



 **NEW COLOUR**
 **ANTIPELLING**

JACKET

Fleece men's 501 · women's 504
S-4XL · XS-2XL

280 g/m²
Fleece, 100 % polyester, antipilling finish

- insulating fabric
- full-length molded zipper
- pockets with molded zipper
- bottom hem adjustable by elastic drawstring
- sleeve hems with elastic band
- women's – slight fit cut



NEW COLOURS



 **ANTIPELLING**
 **WASH 40**

JACKET HI-Q

Fleece unisex 506
S-3XL

360 g/m²
Fleece, 100 % polyester, antipilling finish,
Complementary material: Rip Stop, 100 % polyamide,
inner PU coating

- highly insulating fabric
- shoulders covered by a waterproof, abrasion-resistant fabric
- full-length molded zipper
- pockets with molded zipper
- bottom hem with elastic band
- sleeve hems adjustable by velcro



501: 4XL size available in colours 01, 02, 05, 23, 94

For further information about the delivery date of new arrivals, please contact the Sales department.

EFFECT

Fleece unisex 530
S-3XL

360 g/m²
Fleece, 100 % polyester, antipilling finish;
complementary material: plain weave, 100 % polyamide

- highly insulating fabric
- shoulders and elbows covered by a waterproof, abrasion-resistant fabric
- full-length molded zipper
- pockets with molded zipper
- sleeves ended by cuffs
- bottom hem adjustable by elastic drawstring



ANTIPILLING

WASH

CASUAL

Softshell jacket men's 550
S-3XL

350 g/m²
Knitted softshell: 100 % polyester; micro fleece - 100 % polyester
Softshell: 96 % polyester, 4 % elastane; micro fleece - 100 % polyester,
Lining: 100 % polyester

- 2-layer softshell
- combination of knitted and plain fabric
- full-length reverse coil zipper
- sleeve hems adjustable by velcro
- pockets with reverse coil zipper
- 2 inner pockets
- contrast elements



SOFTSHELL

ANTIPILLING

WASH

LAST CHANCE



NEXT

Fleece vest unisex 518
XS-4XL

280 g/m²
Fleece, 100 % polyester, antipilling finish

- insulating fabric
- full-length coil zipper
- welt pockets with coil zipper
- bottom hem adjustable by elastic drawstring



NEW COLOURS



BODY WARMER

Vest unisex 509
S-4XL

300 g/m²
Rip Stop, 100 % polyamide, inner silver coating;
lining: Fleece, 100 % polyester, antipilling finish

- full-length molded zipper with chin protection
- bottom hem adjustable by elastic drawstring
- inner pocket with velcro
- access for branding in side lining
- contrast elements



518: 4XL size available in colours 01, 02, 05, 23, 94
For further information about the delivery date of new arrivals, please contact the Sales department.



HV DROP

Softshell jacket unisex 5V3
M-4XL

300 g/m²

Softshell: 100 % polyester; breathable membrane; micro fleece, 100 % polyester
waterproof 14 000 mm, breathable 2 000 g/m²/24h

- high visibility clothing in two-colour design • waterproof, breathable, fluorescent fabric
 - back part with a yoke • welt pockets with reverse coil zipper
 - inner breast zip pocket with access for branding

SEGMENTED STRIPES

Retroreflective stripes are used to improve visibility during night and bad optical conditions. They are designed for use on safety clothes, with flexibility in mind, preserving full range of motion. These stripes are thermally applied, and can handle washing very well.

97 98



ANTIPELLING



BREATHABLE



WATERPROOF



WINDPROOF



LAST CHANCE



^{2,3} EN ISO 20471
EN ISO 13688

hanging loop

*full-length reverse coil zipper
with chin protection*

*segmented
retroreflective bands*

*sleeve hems adjustable
by velcro*

*bottom hem adjustable
by elastic drawstring*

*curved and slightly
prolonged back part*





HV GUARD 4 IN 1

Jacket unisex 5V2

M-4XL

210 g/m²

Upper jacket: Oxford, 100 % polyester with PU finish, retroreflective bands 3M

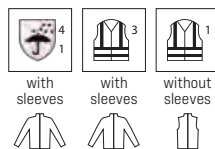
280 g/m²

Inner fleece: Polar fleece, 100 % polyester, retroreflective bands 3M, antipilling finish on both sides

- high visibility clothing • multipurpose use 4 in 1 in two-colour design

Upper jacket:

- waterproof, breathable, fluorescent fabric • full-length molded zipper with flap
 - removable hood with reinforced peak, hidden in the collar
 - hood and bottom hem adjustable by elastic drawstring
- removable sleeves • sleeve hems with elastic band, adjustable with velcro
- multifunctional pockets • taped seams • access for branding in back lining



EN 343:2019
EN ISO 20471
EN ISO 13688

Innerfleece:

- removable inner fleece jacket • insulating fluorescent fabric
- full-length molded zipper • pockets with molded zipper
 - trimmed by elastic stripe



EN ISO 20471
EN ISO 13688

97 98



4 IN 1



ANTIPELLING



TAPED



BREATHABLE



WATERPROOF



WINDPROOF



WASH 40



LAST CHANCE

1



2



3



4in1





40
WASH

LAST CHANCE

HV ESSENTIAL

Sweatshirt unisex 4V6
M-3XL

300 g/m²
French terry, brushed inner side,
100 % polyester, retroreflective bands 3M

- high visibility clothing
- straight cut with side seams
- 1:1 rib knit bottom hem, cuffs and neckline

97 98

 **EN ISO 20471**
EN ISO 13688



40
WASH

ANTIPILLING

HV FLEECE JACKET

Fleece unisex 5V1
M-3XL

280 g/m²
Fleece, 100 % polyester,
antipilling finish, retroreflective bands 3M

- high visibility clothing
- insulating fluorescent fabric
- full-length molded zipper in 01 colour
- welt pockets with molded zipper
- bottom hem adjustable by elastic drawstring
- sleeve hems with elastic band

97 98

 **EN ISO 20471**
EN ISO 13688

HV DRY

T-shirt unisex 1V8
S-3XL

150 g/m²
Grid knit, 100 % polyester,
segmented retroreflective bands

- quick-drying fluorescent fabric
- segmented retroreflective bands
- cut with side seams
- 1:1 rib knit neckline hem



HV PROTECT

T-shirt unisex 1V9
S-3XL

175 g/m²
Interlock pique, 55 % cotton, 45 % polyester,
retroreflective bands 3M

- fluorescent polyester on the outer side
- cotton on the inner side
- cut with side seams
- 1:1 rib knit neckline hem





40
WASH

LAST CHANGE

HV RUNWAY

Polo unisex 2V9
S-3XL

175 g/m²
Interlock pique, 55 % cotton, 45 % polyester,
retroreflective bands 3M

- high visibility clothing
- fluorescent polyester on the outer side
- cotton on the inner side
- cut with side seams
- 1:1 rib knit collar with a contrast stripe

97 98

 **EN ISO 20471**
EN ISO 13688



40
WASH

HV BRIGHT

Safety vest unisex 9V3
M (FH 160 - 176 cm), 2XL (FH 184 - 192 cm)

120 g/m²
Warp knit, 100 % polyester,
retroreflective bands

- high visibility clothing
- velcro fastening
- trimming in 01 colour
- retroreflective bands

97 98

 **EN ISO 20471**
EN ISO 13688

HV REFLEX

Cap unisex 3V5
adjustable

240 g/m²
Twill, 50 % cotton, 50 % polyester

- quick-drying fluorescent fabric
- bonded 2 front panels
- stitched, slightly curved peak
- embroidered air holes
- sweatband
- size adjustable by velcro

97



EXTRA DRY



LAST CHANCE

SHIELD

Knee pads unisex A99
uni · 170 x 240 mm (can be shortened) · 1 pcs. = 1 pair

100 % polyethylene

- light, ergonomically shaped
- usable into the knee pockets
- suitable for work when kneeling
- anti-penetration protection

01



EN 14404 + A1
(type 2 only with W07)

1



LAST CHANCE

RIMECK

			g/m ²	05	14	15	02	01	94	80	36	12	03	00	93	84
509	Body warmer	U	300	●			●	●	●							
550	Casual	M	350							●			●			●
109	Colormix	U	200		●			●	●							
530	Effect	U	360	●			●	●	●		●					●
9V3	HV Bright	U	120													
5V3	HV Drop	U	300													
1V8	HV Dry	U	150													
4V6	HV Essential	U	300													
5V1	HV Fleece Jacket	U	280													
5V2	HV Guard 4 in 1	U	210/280													
1V9	HV Protect	U	175													
3V5	HV Reflex	U	240													
2V9	HV Runway	U	175													
501	Jacket	M	280	●	●		●	●	●		●			○		●
504	Jacket	W	280	●	●		●	●	●		●			○		●
506	Jacket Hi-Q	U	360	●			●	●	●		●					
518	Next	U	280	●	●		●	●	●		●			○		●
R01	Resist	M	160	●		●	●	●	●					○		●
R02	Resist	W	160	●		●	●	●	●					○		●
R03	Resist Heavy	M	200	●			●	●	●					○		
R04	Resist Heavy	W	200	●			●	●	●					○		
R20	Resist Heavy Polo	M	200	●			●	●	●					○		
R21	Resist Heavy Polo	W	200	●			●	●	●					○		
R05	Resist LS	U	160	●			●	●	●					○		●
A99	Shield	U	/					●								
130	Street LS	U	180	●			●	●	●					○		
W55	Vertex	M	320					●	●							
W07	Vertex	M	310					●	●							
W41	Vertex	M	280					●	●							●
W42	Vertex	M	300					●	●		●					●
W43	Vertex Hoodie	M	300					●	●		●					●
W02	Woody	M	270				●		●							
W51	Woody	M	270				●		●							
W01	Woody	M	270				●		●							
W52	Woody	M	270				●		●							
W05	Woody	M	270				●		●							

	44	95	06	69	01	49	23	04	07	11	98	04	16	62	97
509			●	●					●						
550								●							
109	●								●	●		●	●	●	
530			●	●			●		●	●					
9V3											●				●
5V3											●				●
1V8											●				●
4V6											●				●
5V1											●				●
5V2											●				●
1V9											●				●
3V5															●
2V9											●				●
501			●	●			●		●	●			●		
504		●	●		●		●		●	●			●		
506			●	●			●		●						
518		●	●	●	●	●	●		●	●			●		
R01		●	●				●		●	●					
R02		●	●		●		●		●	●					
R03			●						●	●					
R04			●						●	●					
R20			●						●	●		●			
R21			●						●	●		●			
R05			●				●		●	●					
A99															
130			●				●			●					
W55							●								
W07															
W41							●								
W42							●								
W43							●								
W02															
W51															
W01															
W52															
W05															

CERTIFICATION

of RIMECK work clothes

Selected garments from the collection HIGH VISIBILITY (HV) Rimeck correspond to the international standards, which determine the optimal form of protective Plaining with high visibility. Certified garments from the HV collection are supplied with a leaflet providing information on proper storage, treatment and purpose.

EN ISO 20471:2013/A1:2016 – High visibility Plaining – this international standard specifies requirements for Plaining with high visibility, which is able to visually indicate the presence of a user for vehicles or other mechanized means of transport under any light conditions, both in daylight and when illuminated by headlights of vehicles at night.

High visibility Plaining are made of fluorescent material, and in combination with reflective stripes are divided into three categories:



Category 3 – the highest level of protection – the minimum required substrate surface is 0.80 m² and 0.20 m² of retroreflective material.



Category 2 – the medium level of protection – the minimum required substrate surface is 0.50 m² and 0.13 m² of retroreflective material.



Category 1 – the minimum level of protection – the minimum required substrate surface 0.14 m² and 0.10 m² of retroreflective material.

EN 1150:1999 – Protective Plaining – caution Plaining with high visibility for non-professional use – standard specifies requirements for optical properties of caution high visibility Plaining suitable for adults or teenagers, not for professionals. The garments are designed for visual indication of the presence of users in all light conditions, both in daylight in urban lighting and when illuminated by headlights of vehicles at night.

EN 343:2019 – Protective clothes – Rain protection – European standard determining the properties of fabrics and seams of a protective garment. The characteristics of these are measured for the outside of the clothes. After achieving the specific permeability requirements and reaching the appropriate certification, it provides protection against water penetration and resistance against steam penetration for the wearer.

EN ISO EN ISO 13688:2013/A1:2021 – Protective Plaining – this international standard specifies the general requirements for the implementation of protective workwear in terms of ergonomics, safety, size designation, aging, marking of protective Plaining and the information which is supplied by the protective Plaining manufacturer.

EN 14404:2004+A1:2010 – Personal protective equipment – Knee pads for kneeling work – The standard specifies requirements for knee protection for kneeling work where there is a risk of injury due to surface mechanical effects. The protectors must be harmless to health and safe for the users.

TYPE 2 – foam plastic or other filling material in trouser pockets, or permanently attached to trousers.



LEVEL 0 – only suitable for use on a flat surface – does not protect against punctures



LEVEL 1 – suitable for use on flat or uneven surfaces – protection against puncture with a force of at least 100 ± 5 N



LEVEL 2 – suitable for use on flat or uneven surfaces in demanding conditions – protection against puncture with a force of at least 250 ± 10 N

MATERIALS

fabric and finishes

NATURAL MATERIALS



COTTON

The most popular natural material in the fashion industry. Cotton is characterized by properties such as softness, pliability, strength, absorbency and breathability. It is pleasant to the touch and resists higher temperatures. It is often used in combination with synthetic materials or elastane.



ORGANIC COTTON

Cotton produced from ecologically controlled agriculture and further processed under the strict inspection of all manufacturing processes. The biggest producers are Turkey, India, the USA and China.



BAMBOO FIBER

Fiber made of bamboo based on regenerated cellulose. It has thermoregulatory, antibacterial, antimycotic and antistatic properties. Bamboo fiber is stronger along with three times higher absorbency than cotton, resistant to frequent washing and keeps its properties for a long time. We do not recommend using fabric softener in order not to reduce absorbency of the material.



MERINO WOOL

Active fiber that regulates body temperature changes and is one of the most breathable natural fibers. The fiber can absorb large amounts of moisture – along with odour molecules in the sweat. Natural elasticity maintains dimensional stability, and the fabric is easy to maintain.



VISCOSE

Fiber made based on regenerated cellulose. The input raw material for the production is wood or cotton pulp. Viscose is breathable and it has great absorption features. Compared to cotton, it is softer, shinier and finer.

SYNTHETIC MATERIALS



ELASTANE

Very fine, strong, elastic polyurethane fiber. The key feature is its high elasticity. Elastane can be stretched out from three up to seven times of its original length without breaking. It is always used in combination with other materials, ensures dimensional stability, increases elasticity and reduces material wrinkling. Elastane is prone to high temperatures.



POLYESTER

Synthetic fiber made by modification of the input material. The fiber is very strong so it can be made thick or very fine (micro polyester). Material is durable, quick-drying and easy-care. It is suitable for sports and physical activities. Through chemical and mechanical processes various modifications of the material properties can be achieved depending on the purpose of use (insulation, impregnation).



POLYAMIDE

The process of polyamide production is similar to the one of polyester. The material is durable, easy-care and has a good shape stability. It dries quickly thanks to low moisture absorption. It has twice the greater abrasion resistance than polyester. The fiber can be made thick or very fine as well as polyester. Mechanical and chemical treatment influences the final product's properties.



POLYETHYLEN

Currently the most widely used polymer in the world, characterized by high strength, friction resistance, zero moisture content and chemical resistance. Thanks to its properties it is ideal for the production of safety protective equipment protecting against mechanical influences and wear.



RECYCLED POLYESTER

The fibers are made by recycling consumer plastics (PET bottles, plastic packages and other waste material). The advantage is the consumption of less energy during production, they leave a lower carbon footprint and reduce environmental pollution. By recycling we achieve the same quality and properties as with ordinary polyester.



POLYACRYL

Acrylic/polyacrylic is a wool-like synthetic fiber produced by polymerizing acrylonitrile. Final products are durable, soft, flexible and warm, but unlike wool, they are hypoallergenic, light, quick drying, easier to maintain and wrinkle-resistant.

BRANDED MATERIALS



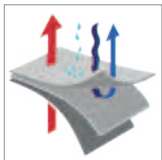
SUPIMA®

Not all cottons are created equal. Supima cotton is a superior type of cotton grown in the USA. It represents less than 1% of cotton grown in the world. What makes Supima unique to other cottons is the extra-long staple fiber that gives the cotton its premium properties: Strength, Softness and Color retention.



NANOTEX® AQUAPEL®

Certified material that has been modified with the environmentally friendly Nanotex Aquapel PFAS free treatment. The result fabric repels liquids, extends the lifetime, retains natural softness and breathability. When a liquid comes into contact with the fabric, rather than sinking into the fibers, the fluid beads roll right off the surface without leaving a mark.



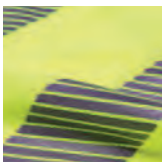
SOFTSHELL

Softshell is a laminated textile for modern and sports plain weave and plain weave for outdoor activities. It is divided into membrane and nonmembrane. Plain weave made from this material is light, warm, elastic and has high mechanical resistance. Softshell with a membrane can be waterproof and simultaneously air permeable.



3M™ STRIPES

3M retroreflective stripes increase visibility of the person who wears the garment, thereby reduce possibility of accidents. 3M™ technology of reflective materials is based on a layer of microscopic glass spheres mounted on the substrate fabric layer with a mirror surface. On 1 cm² of the fabric there are up to 30,000 glass beads.



SEGMENTED STRIPES

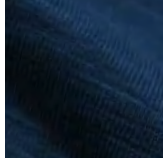
Retroreflective stripes are used to improve visibility during night and bad optical conditions. They are designed for use on safety clothes, with flexibility in mind, preserving full range of motion. These stripes are thermally applied, and can handle washing very well.



BIONIC-FINISH® ECO

Environmentally friendly and highly durable hydrophobic textile finish based on proprietary technology that improves the functional properties of the fabric: repels impurities, it is breathable and better resists adverse weather conditions.

FABRICS



SINGLE JERSEY SLUB

Fine weft knitted fabric with characteristic structure of slub fabric. To achieve this final effect, a yarn with thicker and thinner sections is used throughout the length which are created by varying the tightness of the twist. This fabric is also characterized by its elasticity.



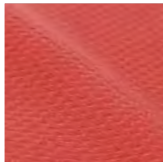
SINGLE JERSEY

Fine weft knitted fabric with characteristic dendritic columns on the outside and arches on the reverse side. The weave features ductility, softness and easy unstitching. The quality of the final product depends on the thread used for making the fabric. Products are manufactured from high quality ring spun thread.



PIQUE

Weft knitted fabric patterned with geometrical relief on outside. On the reverse side it is enhanced with supplementary thread. This type of knitting is popular for production of polo shirts and plain weave ideal for sports and leisure activities. The products made from it are breathable and easy to maintain.



INTERLOCK PIQUE

Warp knitted fabric with a pattern in which two fully interlocking rows alternate with a one-face row. One side of the knitted fabric has twilled separate stitches while the other side is plain. This type of knitting is popular for production of polo shirts and plain weave ideal for sports and leisure activities. The products made from it are breathable and easy to maintain.



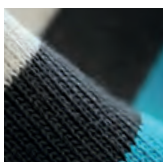
DOUBLE FACE INTERLOCK KNIT

Double face knitting also called double-sided. The weave is densely alternating front and back uprights on the outside and reverse material sides. In the unstretched position only front stitches are visible, reverse stitches are visible only while stretched. This knitted fabric looks identically from the back and it is highly elastic in the transverse direction.



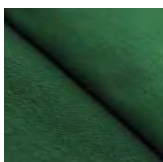
GRID KNIT

Quick-drying, breathable knit for the production of modern, functional clothing. The special grid structure perfectly moves moisture away from the body and expands it onto the fabric surface for fast drying, making it feel fresh, dry but also cooling the body. High elasticity ensures maximum comfort during wear.



RIB KNIT

Double-sided knitted fabric consisting of rib pattern indicated by 1:1 or 2:2. This information determines the ratio of regularly alternating vertical stripes of stockinette stitch with vertical stripes of reverse stockinette stitch. Rib knit fabric is elastic and it is mostly used for collars, cuffs, plackets and hem of poloshirts and sweatshirts.



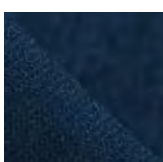
FRENCH TERRY – NOT BRUSHED

Weft knitted fabric with characteristic dendritic columns on the outside and arches on the reverse side. The weave is enhanced with supplementary thread that leads along the reverse side of the fabric. The supplementary thread increases strength, absorption as well as the volume of the fabric.



FRENCH TERRY – BRUSHED

Weft knitted fabric with characteristic dendritic columns on the outside and brushed soft on the reverse side. Reverse side of the material enhanced with supplementary thread is fluffed by mechanical process. Such way treated surface has a larger volume and shows warmer properties.



STRETCH FLEECE

Smooth outside, brushed inside functional stretch knit fabric with great thermo isolating properties. It is soft, lightweight, breathable and quick-drying material. It is suitable for sports and physical activities. Inner part of the material has anti-pilling finish.



FLEECE

Weft-knitted fabric characterized by a dense, brushed, and teased soft surface on both sides. It has outstanding insulating attributes, long lifetime and easy-care. Material can be treated with anti-pilling finish. Products are suitable for embroidery and laser engraving.



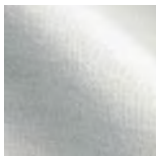
PLAIN WEAVE

Plain weave fabric is made of strong, regularly repeating weave that has the same appearance on the outside and reverse side. With its simple and dense interlacing, it creates a steady and smooth surface suitable for printing and embroidery. Plain weave fabrics are manufactured from high quality combed cotton or polyester.



POPLIN

Mostly used type of material for shirts production. It is extremely soft, pleasant to the touch, though stiff enough. It is made by a plain weave which has a higher amount of warp than weft threads.



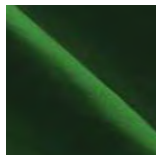
MICRO TWILL

The use of two-fold yarn with a high density of 100/2 results in a very fine threading. This creates a thin, but effective diagonal lines that gives the twill weave an elegant and modern look. It is a popular non-wrinkling fabric with high breathability and soft feeling.



OXFORD

Weave derived from canvas. The difference is that there are at least doubled yarns alternating when fabricating the fabric. Oxford is shinier than canvas. It has a wide range of use. It can be made from natural or synthetic yarns.



RIP STOP

Very strong regularly repeating weave. In this smooth fabric are interwoven thick warp and weft threads in the intervals of 5 - 8 mm. The surface gets an effect of a grided structure. This imaginary grid significantly increases the fabric rip and tear resistancy.



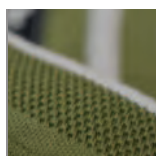
TWILL

Weave characteristic by diagonal spacing that is regularly repeated. It consists of alternating the system of warp and weft yarns. The fabric is very robust, tear-resistant and easy-care. The most common use of twill weave is in denim or workwear. The material is also popular for caps production. It can be smooth or brushed. The brush finishing makes the surface softer with matte appearance.



TERRY

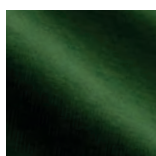
Loop fabric consists of solid loops on both sides of the material. It is a three-dimensional fabric with very soft touch and excellent absorbent properties. It is ideal for towels and bath towels production in the material composition of 100% cotton or blend of bamboo fiber and cotton.



JACQUARD KNIT

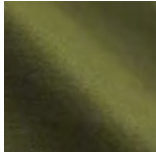
Very interesting plastic patterns can be achieved using the jacquard technique in a combination of two colors. We call regular patterning, which has a different reverse side and the obverse side is made up of visible eyelets, "birdseye". Due to its strength and stability in shape, this pattern is suitable for use on cuffs or collars and at the same time underlines the high quality and luxury of the product.

FINISHES



PRESHRUNK COTTON

During the production process of cotton products the space between the fiber gets reduced which eliminates the risk of shrinkage of the fabric during the washing and drying cycle. This process allows the final product to be washed at high temperatures for the purpose of removing any impurities and bacteria.



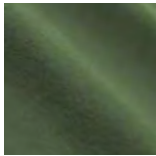
MERCERIZED COTTON

The process of mercerization consists of immersing the cotton yarn into a bath for the purpose of changing their sections and leveling uneven fibers. The fiber cross-section thus obtains an almost perfect shape. The final material becomes smoother, shinier, and softer. Mercerization results in higher strength and better color stability of the material.



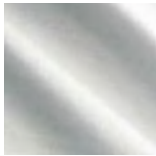
SILICONE FINISH

The silicone finish is similar to the effect of fabric softener, however longer lasting. It makes the product soft to the touch, more dirt-proof and the prints stick much better.



ENZYME WASH

The purpose of an enzyme wash is to reduce loose fibers on the surface of the fabric and improve its touch and appearance. For this type of treatment, an organic-based compound is used which is added directly to the dye bath. This procedure significantly reduces the amount of energy required during the process.



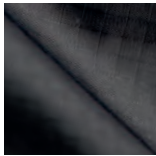
EASY CARE

The surface finish based on modification of the cotton fiber cellulose, which increases the flexibility of the material. It prevents the creases while wearing and washing cycles, thereby reducing wrinkling, easier ironing, shape stability and dimension stability.



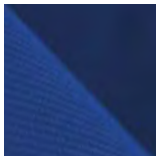
ANTIPELLING FINISH

Antipilling finish minimizes the release of fibers and prevents fabric's pilling. This process results in fibres fixation and stabilization. It reduces damaging of the upper part under excessive use and friction and extends the product lifetime and functionality.



PU FINISH

A long-lasting polyurethane layer that is applied from one side of the base fabric. It provides water, moisture resistance, abrasion and dirt resistance. Due to the special composition, the layer is very flexible, lightweight and does not negatively affect the other properties of the product.



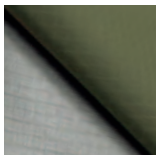
PA FINISH

Acrylic treatment is used to improve the mechanical and practical properties of the fabric. It is mainly used in outdoor clothing and is characterized by wind resistance and tensile strength.



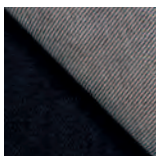
TPU LAMINACE

Durable top layer made of thermoplastic polyurethane ensures stability of material properties in a wider range of conditions. The combination of the TPU membrane and the top material maintains the flexibility of the product and provides waterproof and abrasion resistant surface with excellent bend and tensile strength.



SILVER COATING

A special matte silver coating applied from the inside of the fabric improves the functional properties of the material. It increases water resistance, prevents transparency of the top material and increases resistance to damage potentially caused by washing.



ANTI-SOILING FINISH

The ability of the top material to repel liquid, dirt and greasy dirt, which you will appreciate especially in the work environment. Dirt or grease forms droplets on the treated fabric, which can be easily wiped off, thereby extending the product's lifespan.



WATER REPELLENT FINISH

Special surface finish preventing the penetration of moisture and fabric absorbency, which improves its functional properties - water simply runs off the surface in the form of small drops.

LEGEND



NEW PRODUCT

For information about stock availability please contact our sales department.



NEW COLOUR

For information about stock availability please contact our sales department.



ELASTANE

A synthetic fiber that contains polyurethane bonds of high elasticity.



ORGANIC

Cotton produced from ecologically controlled agriculture and further processed under the strict inspection of all manufacturing processes.



MERINO

Merino wool is world renowned for its soft, yet firm feel, offering advantages in every area over common wool and many other fibers.



THREE-LAYER SOFTSHELL

Three-layer softshell with membrane



DOUBLE-LAYER SOFTSHELL

Double-layer softshell



RECYCLED POLYESTER

The fibers are made by recycling consumer plastics.



TEAR OFF

Tear off label.



STICKER LABEL

Label in a form of a sticker. Can be easily taken off.



LABEL FREE

The products have only a small size label behind the neck for easy rebranding



FLAT SEAMS

Double-sided cover stitch which is flat ensures maximum wearing comfort.



TAPED SEAMS

Technology supporting the waterproofness of material at seams. The waterproof tape is applied thermally under pressure over the inside seams.



4-WAY STRETCH

Material flexible in all directions for maximum freedom of movement and long-lasting shape stability.



WINDPROOF

Windproof material prevents wind and chills from penetration.



WATERPROOF

Rating in millimetres to indicate material's resistance to water pressure. The higher the water column is, the longer the fabric will remain waterproof.



EXTRA DRY

Extra dry material.



BREATHABLE

Rating in g/m² per 24hours. The ability of a fabric to allow moisture vapor in grams in square meter per day. The higher the value is, the better fabric breathes.



COOL/WARM

Soft, easy care, quick-drying and conductive fabric.



THERMOREGULATION

Keeps you warm when it's cold and reversed.



ODOR RESISTENCE

Thanks to moist absorption it keeps sweat out of your skin and therefore it's antibacterial. The clothing stays fresh longer.



SILICONE FINISH

The silicone finish is similar to the effect of fabric softener, however more lasting. It makes the product soft to the touch, more dirt-proof and the prints hold much better.



ENZYME WASH

This treatment results in a shiny and soft surface that is also resistant to pilling.



ANTIPELLING FINISH

The antipilling finish lowers the pilling tendency of the fabric.



ANTI-SOILING FINISH

The ability of the top material to repel liquid, dirt and greasy dirt.



WATER REPELLENT FINISH

Special finish against the penetration of moisture and fabric absorbency.



EASY CARE

Surface finish eliminates fabric wrinkling to provide product easy care.



3 IN 1

Multi use jacket can be worn as one whole winter jacket, or separately as a windbreaker and a fleece.



4 IN 1

Multi use Hi-Vis workwear jacket can be worn as one whole, upper and inner part separately, or just the upper jacket without sleeves as a vest

SIZE CHARTS





MEN / UNISEX

Size	XS		S		M		L		XL		2XL		3XL		4XL		5XL		6XL	
	40	42	44	46	48	50	52	54	56	58	60	62	64	66	68	70	72	74	76	78
height	168		172		176		180		184		188		192		196		196		196	
chest size	80	84	88	92	96	100	104	108	112	116	120	124	130	136	142	148	154	160	166	172
waist size	68	72	76	80	84	88	92	96	100	104	108	112	118	124	130	136	142	148	154	160
neck size	35	36	37	38	39	40	41	42	43	44	45	46	47	48	49	50	51	52	53	54

WOMEN

Size	XS		S		M		L		XL		2XL		3XL		4XL		5XL	
	32	34	36	38	40	42	44	46	48	50	52	54	56	58	60	62	64	66
height	160		164		168		172		176		180		184		184		184	
chest size	76	80	84	88	92	96	100	104	108	112	118	124	130	136	142	148	154	160
waist size	62	66	70	74	78	82	86	90	94	98	105	112	119	126	133	140	147	154
hip girth	84	88	92	96	100	104	108	112	116	120	126	132	138	144	150	156	162	168

KIDS

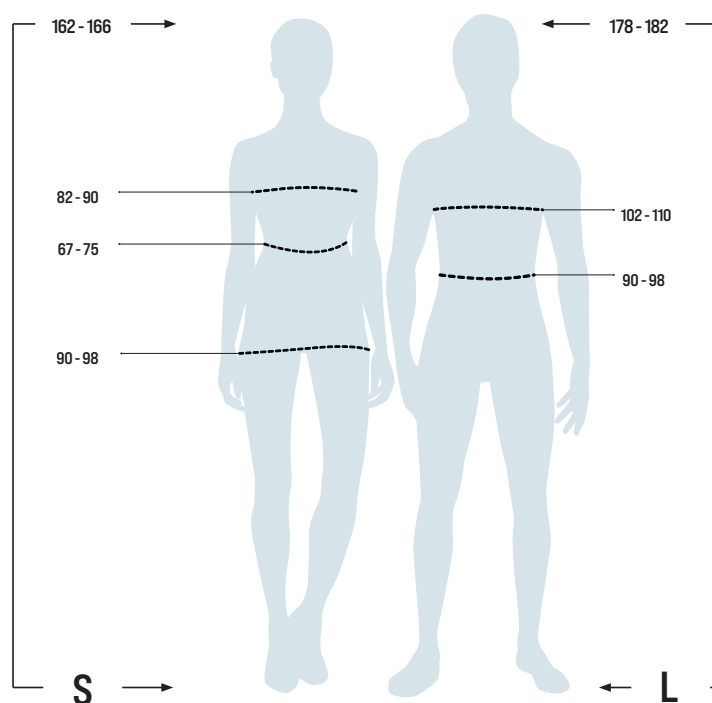
Age [years]	4	6	8	10	12
height	110-116	122-128	134-140	146-152	158-162
chest size  / 	57 / 57	61 / 61	67 / 66	73 / 72	79 / 78
waist size  / 	55 / 55	57 / 57	59,5 / 58	63 / 60	67 / 64
back size	25	29	31	34	38

SIZE CODES

Size	Codes
4 years/110 cm	08
6 years/122 cm	09
8 years/134 cm	10
10 years/146 cm	11
12 years/158 cm	07
XS	12
S	13
M	14
L	15
XL	16
2XL	17
3XL	18
4XL	19
5XL	20
6XL	21

Size	R	Codes
4-6 years/104-128 cm		31
6-8 years/116-140 cm		32
44/46		R3
48/50		R4
52/54		R5
56/58		R6
60/62		R7
44		44
46		46
48		48
50		50
52		52
54		54
56		56
58		58
60		60
62		62
48 long		L3
50 long		L4
52 long		L5
54 long		L6
56 long		L7
58 long		L8

EXAMPLE OF THE MAXIMUM SPAN OF THE FIGURE MEASURES



The data in the tables represents figure measurements not plain weaving.

Please state the order number of the product in the following format: product code-colour code-size code. Example: T-shirt BASIC in black colour, size M = 129-01-14.



101, 100 CLASSIC	29	256, 257 COLLAR UP	66	610 BALANCE	105	RIMECK®	
102 V-NECK	36	259, 269 GRAND	63	611 COMFY	107		
109 COLORMIX	31	260, 261 FLASH	81	612, 613 MILES	106	109 COLORMIX	181
110 HEAVY	33	262, 263 DYNAMIC	79	614, 615 REST	104	130 STREET LS	181
111 HEAVY V-NECK	36	264, 265 JOURNEY	77	700, 701 ACTION V-NECK	27	1V8 HV DRY	191
119, 169, 121 FIT-T LS	44	271 DRESS UP	66	803, 804, 805 SAILOR	38	1V9 HV PROTECT	191
120 CITY	21	273, 274 DIAMOND	67	806 SAILOR TOP	39	2V9 HV RUNWAY	192
122 PURE	20	301 RAP 5P	145	807 SAILOR LS	39	3V5 HV REFLEX	193
123 LOVE	21	303 6P KIDS	148	810, 811 CHANCE	51	4V6 HV ESSENTIAL	190
124, 140, 147 FANTASY	49	304 CLASSIC	151	812 STAGE	15	501, 504 JACKET	182
127 ELEGANCE	45	306 SANDWICH 6P	148	820 BREEZE	50	506 JACKET HI-Q	182
128 DREAM	37	307 5P	147	829 BASIC RECYCLED	13	509 BODY WARMER	185
129, 134, 138 BASIC	9	305 6P	147	900 HANDY	154	518 NEXT	185
130 STREET LS	31	315 BEANIE	145	901 CARRY	153	530 EFFECT	183
132, 133, 135 CLASSIC NEW	28	328 TWISTER	151	903 TOWEL 450	157	550 CASUAL	183
136 TRIUMPH	40	406 ESSENTIAL	99	905 BATH TOWEL 450	157	5V1 HV FLEECE JACKET	190
137 HEAVY NEW	32	407, ADVENTURE, 409 VIVA	98	912 ENERGY	155	5V2 HV GUARD 4 IN 1	189
139 SLIM	47	410, 411, 412 TRENDY ZIPPER	96	916, 917, 918 ORGANIC TOWEL	156	5V3 HV DROP	187
141 GLANCE	20	413, 414 CAPE	95	921 SHOPPER	153	9V3 HV BRIGHT	192
142 CORE	41	417, 418 DIRECT	119	922 EASYGO	155	A99 SHIELD	193
143, 161 VIPER	17	419 SNAP	93	951 BAMBOO TOWEL	157	R01, R02 RESIST	178
144, 149 CAMOUFLAGE	41	420, 421 MOON	93	952 BAMBOO BATH TOWEL	157	R03, R04 RESIST HEAVY	178
145 ELEMENT	33	422, 423 CHILL	91	C22 CAMO PURE	40	R05 RESIST LS	179
146, 162 FIT V-NECK	37	426, 427 CREW	89	F03, F10, F22 PIQUE POLO FREE	60	R20, R21 RESIST HEAVY POLO	179
150, 152 ACTION	27	428 CLOUD	87	F13, F14 CAPE FREE	95	W02 WOODY	175
153, 154 EXCLUSIVE	26	452, 451 VOYAGE	97	F29, F34, F38 BASIC FREE	11	W07 VERTEX	167
155, 156 BRAVE	47	453, 454 BOMBER	97	F37 HEAVY NEW FREE	32	W41 VERTEX	169
157, 158 MERINO RISE	43	501, 504 JACKET	115	F43, F61 VIPER FREE	17	W42 VERTEX	171
159, 160 MERINO RISE LS	43	506 JACKET HI-Q	115	P21, P22 JOY	71	W43 VERTEX HOODIE	173
171, 172 ORIGIN	25	509 BODY WARMER	139	P31 SUNSHINE	149	W51, W01 WOODY	176
173, 174 NATIVE	25	518 NEXT	117	P41 ZERO	99	W52, W05 WOODY	177
175, 176 DESTINY	51	522, 521 PERFORMANCE	129	P71 PARADE	19	W55 VERTEX	165
178 FREEDOM	23	524 WINDY	139	P72 PELICAN	19		
202, 223 SINGLE J.	69	525 EXIT	117	P73 PAINT	18		
203, 210, 222 PIQUE POLO	59	527, 528, 529 FROSTY	113	P74 PEAK	18		
207, 214 CHIC	81	530 EFFECT	121	P75 PROGRESS LS	45		
209, 229 STYLE LS	78	531, 532 NANO	138	P81 PIXEL	50		
211 SINGLE J. LS	69	533, 534 PACIFIC 3 IN 1	135	R01, R02 RESIST	34		
212, 213 COTTON	68	538, 539 RAINBOW	137	R03, R04 RESIST HEAVY	34		
215, 216 COTTON HEAVY	68	540, 541 PHANTOM	133	R05 RESIST LS	35		
217 VICTORY	71	548, 549 TRAIL	127	R20, R21 RESIST HEAVY POLO	70		
218 STYLE	80	550 CASUAL	121	W41 VERTEX	118		
219, 220 URBAN	65	552, 551 EVEREST	132	W42 VERTEX	101		
221, 231, 241 PIQUE POLO LS	61	553, 554 EVEREST	132	W43 VERTEX HOODIE	101		
234, 235 PRIME	63	555, 556 CROSS	130	W55 VERTEX	134		
251, 253 PERFECTION PLAIN	65	557, 558 CROSS	131				
		568, 569 TRAIL	127				
		603 LEISURE	105				
		604 TWO IN ONE	106				
		609, 619 MEADOW	103				



5P ³⁰⁷	147	EASYGO ⁹²²	155	PIQUE POLO ^{203, 210, 222}	59	RIMECK [®]	
RAP 5P ³⁰¹	145	EFFECT ⁵³⁰	121	PIQUE POLO FREE ^{F03, F10, F22}	60		
6P ³⁰⁵	147	ELEGANCE ¹²⁷	45	PIQUE POLO LS ^{221, 231, 241}	61	BODY WARMER ⁵⁰⁹	185
6P KIDS ³⁰³	148	ELEMENT ¹⁴⁵	33	PIXEL ^{P81}	50	CASUAL ⁵⁵⁰	183
SANDWICH 6P ³⁰⁶	148	ENERGY ⁹¹²	155	PRIME ^{234, 235}	63	COLORMIX ¹⁰⁹	181
ACTION ^{150, 152}	27	ESSENTIAL ⁴⁰⁶	99	PROGRESS LS ^{P75}	45	EFFECT ⁵³⁰	183
ACTION V-NECK ^{700, 701}	27	EVEREST ^{552, 551}	132	PURE ¹²²	20	HV BRIGHT ^{9V3}	192
ADVENTURE ⁴⁰⁷	98	EVEREST ^{553, 554}	132	RAINBOW ^{538, 539}	137	HV DROP ^{5V3}	187
BALANCE ⁶¹⁰	105	EXCLUSIVE ^{153, 154}	26	RESIST HEAVY POLO ^{R20, R21}	70	HV DRY ^{1V8}	191
BAMBOO BATH TOWEL ⁹⁵²	157	EXIT ⁵²⁵	117	RESIST HEAVY ^{R03, R04}	34	HV ESSENTIAL ^{4V6}	190
BAMBOO TOWEL ⁹⁵¹	157	FANTASY ^{124, 140, 147}	49	RESIST LS ^{R05}	35	HV FLEECE JACKET ^{5V1}	190
BASIC ^{129, 134, 138}	9	FIT V-NECK ^{146, 162}	37	RESIST ^{R01, R02}	34	HV GUARD 4 IN 1 ^{5V2}	189
BASIC FREE ^{F29, F34, F38}	11	FIT-LS ^{119, 169, 121}	44	REST ^{614, 615}	104	HV PROTECT ^{1V9}	191
BASIC RECYCLED ⁸²⁹	13	FLASH ^{260, 261}	81	SAILOR ^{803, 804, 805}	38	HV REFLEX ^{3V5}	193
BATH TOWEL 450 ⁹⁰⁵	157	FREEDOM ¹⁷⁸	23	SAILOR LS ⁸⁰⁷	39	HV RUNWAY ^{2V9}	192
BEANIE ³¹⁵	145	FROSTY ^{527, 528, 529}	113	SAILOR TOP ⁸⁰⁶	39	JACKET ^{501, 504}	182
BODY WARMER ⁵⁰⁹	139	GLANCE ¹⁴¹	20	SHOPPER ⁹²¹	153	JACKET HI-Q ⁵⁰⁶	182
BOMBER ^{453, 454}	97	GRAND ^{259, 269}	63	SINGLE J. ^{202, 223}	69	NEXT ⁵¹⁸	185
BRAVE ^{155, 156}	47	HANDY ⁹⁰⁰	154	SINGLE J. LS ²¹¹	69	RESIST HEAVY POLO ^{R20, R21}	179
BREEZE ⁸²⁰	50	HEAVY NEW ¹³⁷	32	SLIM ¹³⁹	47	RESIST HEAVY ^{R03, R04}	178
CAMO PURE ^{C22}	40	HEAVY NEW FREE ^{F37}	32	SNAP ⁴¹⁹	93	RESIST LS ^{R05}	179
CAMOUFLAGE ^{144, 149}	41	HEAVY V-NECK ¹¹¹	36	STAGE ⁸¹²	15	RESIST ^{R01, R02}	178
CAPE ^{413, 414}	95	HEAVY ¹¹⁰	33	STREET LS ¹³⁰	31	SHIELD ^{A99}	193
CAPE FREE ^{F13, F14}	95	CHANCE ^{810, 811}	51	STYLE ²¹⁸	80	STREET LS ¹³⁰	181
CARRY ⁹⁰¹	153	CHIC ^{207, 214}	81	STYLE LS ^{209, 229}	78	VERTEX HOODIE ^{W43}	173
CASUAL ⁵⁵⁰	121	CHILL ^{422, 423}	91	SUNSHINE ^{P31}	149	VERTEX ^{W07}	167
CITY ¹²⁰	21	JACKET HI-Q ⁵⁰⁶	115	TOWEL 450 ⁹⁰³	157	VERTEX ^{W41}	169
CLASSIC ^{101, 100}	29	JACKET ^{501, 504}	115	TRAIL ^{548, 549}	127	VERTEX ^{W42}	171
CLASSIC ³⁰⁴	151	JOURNEY ^{264, 265}	77	TRAIL ^{568, 569}	127	VERTEX ^{W55}	165
CLASSIC NEW ^{132, 133, 135}	28	JOY ^{P21, P22}	71	TRENDY ZIPPER ^{410, 411, 412}	96	WOODY ^{W02}	175
CLOUD ⁴²⁸	87	LEISURE ⁶⁰³	105	TRIUMPH ¹³⁶	40	WOODY ^{W51, W01}	176
COLLAR UP ^{256, 257}	66	LOVE ¹²³	21	TWISTER ³²⁸	151	WOODY ^{W52, W05}	177
COLORMIX ¹⁰⁹	31	MEADOW ^{609, 619}	103	TWO IN ONE ⁶⁰⁴	106		
COMFY ⁶¹¹	107	MERINO RISE LS ^{159, 160}	43	URBAN ^{219, 220}	65		
CORE ¹⁴²	41	MERINO RISE ^{157, 158}	43	VERTEX HOODIE ^{W43}	101		
COTTON ^{212, 213}	68	MILES ^{612, 613}	106	VERTEX ^{W41}	118		
COTTON HEAVY ^{215, 216}	68	MOON ^{420, 421}	93	VERTEX ^{W42}	101		
CREW ^{426, 427}	89	NANO ^{531, 532}	138	VERTEX ^{W55}	134		
CROSS ^{555, 556}	130	NATIVE ^{173, 174}	25	VICTORY ²¹⁷	71		
CROSS ^{557, 558}	131	NEXT ⁵¹⁸	117	VIPER FREE ^{F43, F61}	17		
DESTINY ^{175, 176}	51	ORGANIC TOWEL ^{916, 917, 918}	156	VIPER ^{143, 161}	17		
DIAMOND ^{273, 274}	67	ORIGIN ^{171, 172}	25	VIVA ⁴⁰⁹	98		
DIRECT ^{417, 418}	119	PACIFIC 3 IN 1 ^{533, 534}	135	V-NECK ¹⁰²	36		
DREAM ¹²⁸	37	PAINT ^{P73}	18	VOYAGE ^{452, 451}	97		
DRESS UP ²⁷¹	66	PARADE ^{P71}	19	WINDY ⁵²⁴	139		
DYNAMIC ^{262, 263}	79	PEAK ^{P74}	18	ZERO ^{P41}	99		
		PERFECT PLAIN ^{251, 253}	65				
		PERFORMANCE ^{522, 521}	129				
		PHANTOM ^{540, 541}	133				

OVERVIEW OF COLOURS

CAMOUFLAGE



32 CAMOUFLAGE GRAY



33 CAMOUFLAGE BROWN



34 CAMOUFLAGE GREEN



C1 CAMOUFLAGE PETROL

FLUORESCENT COLOURS



97 FLUORESCENT YELLOW



98 FLUORESCENT ORANGE

NEON COLOURS



90 NEON YELLOW
809 C



88 NEON MANDARINE
804 C

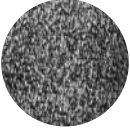


91 NEON ORANGE
811 C



89 NEON PINK
806 C

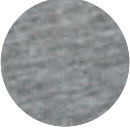
MELANGE COLOURS



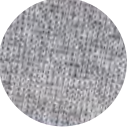
80 KNIT GRAY



M1 BLACK MELANGE



12 DARK GRAY MELANGE



C3 KNIT LIGHT GRAY



O3 ASH MELANGE



M3 SILVER MELANGE



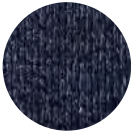
M2 DARK DENIM MELANGE



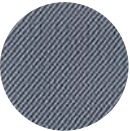
M9 SUNSET MELANGE



C4 KNIT MARLBORO RED



84 KNIT BLUE



C7 - STORM GRAY MELANGE

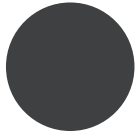


C6 - SLANT BLUE/WHITE

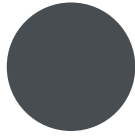
The colour squares and Pantone® references are guides only, and may not accurately reflect the true colour of the fabric. Misprints and changes in the product portfolio reserved.



01 BLACK
19-0303 TCX



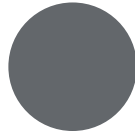
94 EBONY GRAY
19-0000 TCX



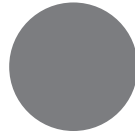
83 LIGHT ANTHRACITE
19-3906 TCX



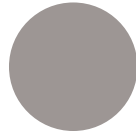
67 CASTOR GRAY
18-0510 TCX



36 STEEL GRAY
18-4005 TCX



25 ANTIQUE SILVER
17-0000 TCX



24 LIGHT GRAY
16-3802 TCX



51 ICE GRAY
14-0000 TCX



A4 SILVER GRAY
14-4203 TCX



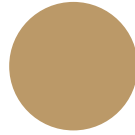
00 WHITE
11-4800 TCX



21 ALMOND
11-0105 TCX



10 NATURAL
12-0605 TCX



08 SAND
16-1324 TCX



27 COFFEE
19-1314 TCX



29 ARMY
19-0618 TCX



A3 AVOCADO GREEN
18-0430 TCX



28 LIGHT KHAKI
16-0518 TCX



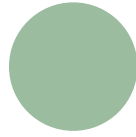
09 KHAKI
18-0316 TCX



69 MILITARY
19-0419 TCX



06 BOTTLE GREEN
19-6311 TCX



C9 SAGE
14-6312 TCX



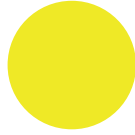
16 KELLY GREEN
17-6030 TCX



92 APPLE GREEN
15-0545 TCX



62 LIME PUNCH
13-0550 TCX



96 LEMON
12-0643 TCX



85 BOURBON VANILLA
12-0727 TCX



04 YELLOW
13-0859 TCX



A2 TANGERINE ORANGE
15-1164 TCX



11 ORANGE
17-1464 TCX



07 RED
18-1763 TCX



71 FORMULA RED
19-1763 TCX



23 MARLBORO RED
19-1764 TCX



43 RHODODENDRON
19-2024 TCX



86 GARNET
19-1655 TCX



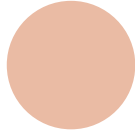
49 FUCHSIA RED
18-2336 TCX



40 MAGENTA
17-2036 TCX



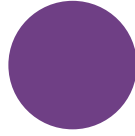
A1 CORAL
16-1546 TCX



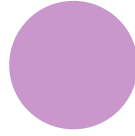
C5 CAMEO
14-1310 TCX



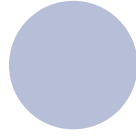
30 PINK
14-2311 TCX



64 PURPLE
19-3536 TCX



D1 ORCHID
15-3412 TCX



82 LIGHT BLUE
14-4110 TCX



15 SKY BLUE
14-4121 TCX



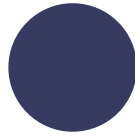
14 AZURE BLUE
18-4039 TCX



70 SNORKEL BLUE
19-4049 TCX



05 ROYAL BLUE
19-3952 TCX



87 MIDNIGHT BLUE
19-3940 TCX



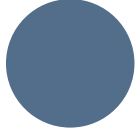
77 DARK NAVY
19-4013 TCX



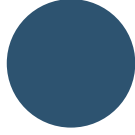
02 NAVY BLUE
19-4023 TCX



72 OMBRE BLUE
19-4014 TCX



60 DENIM
18-4025 TCX



93 PETROL BLUE
19-4241 TCX



44 BLUE ATOLL
16-4535 TCX



59 TURQUOISE
18-4733 TCX



19 EMERALD
17-5029 TCX



95 MINT
13-5414 TCX



A7 FROST
12-5204 TCX



www.malfini.com

K26ENXX