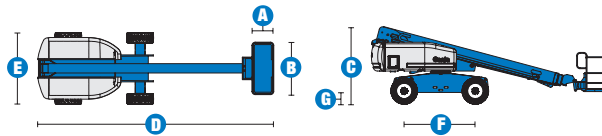


SELF-PROPELLED TELESCOPIC BOOMS S™-60HC “HIGH CAPACITY”

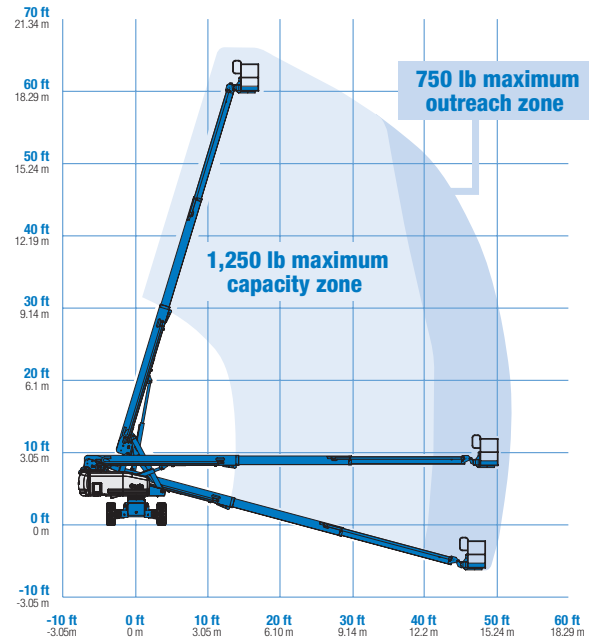


Specifications



MODELS	S™-60HC	
MEASUREMENTS	US	Metric
Working height maximum*	66 ft	20.30 m
Platform height maximum	60 ft	18.30 m
Horizontal reach maximum in 750 lb (340 kg) maximum outreach zone	50 ft 10 in	15.48 m
Horizontal reach maximum in 1,250 lb (567 kg) maximum capacity zone	40 ft 8 in	12.39 m
Below ground reach	5 ft 7 in	1.70 m
A Platform length - 8 ft model	3 ft	.91 m
Platform length - 6 ft model	2 ft 6 in	.76 m
B Platform width - 8 ft model	8 ft	2.44 m
Platform width - 6 ft model	6 ft	1.83 m
C Height - stowed	8 ft 11 in	2.72 m
D Length - stowed	27 ft 11 in	8.51 m
E Width	8 ft 2 in	2.49 m
F Wheelbase	8 ft 2.5 in	2.50 m
G Ground clearance - center	1 ft 2.5 in	.37 m
PRODUCTIVITY		
Lift capacity - maximum outreach zone	750 lbs	340 kg
Lift capacity - maximum capacity zone	1,250 lbs	567 kg
Platform rotation	160°	
Turntable rotation	360° continuous	
Turntable tailswing	4 ft	1.22 m
Drive speed - 2WD stowed	4.0 mph	6.4 km/h
Drive speed - 4WD stowed	3.0 mph	4.8 km/h
Drive speed - raised or extended	0.68 mph	1.1 km/h
Gradeability - 2WD stowed**	30%	
Gradeability - 4WD stowed**	45%	
Turning radius - inside	7 ft 9 in	2.36 m
Turning radius - outside	18 ft 2 in	5.54 m
Controls	12 V DC proportional	
Tires - RT Lug	355/55D 625	
POWER		
Power source	Ford DSG-423 4 cylinder gas/LPG 75 hp (56 kW) Deutz D2011L031 3 cylinder diesel 48 hp (35.8 kW) Perkins 404C-22 4 cylinder diesel 51 hp (38 kW)	
Auxiliary power unit	12 V DC	
Hydraulic tank capacity	45 gal	170 L
Fuel tank capacity	35 gal	132 L
WEIGHT***		
2WD	22,038 lbs	9,996 kg
4WD	22,208 lbs	10,073 kg

RANGE OF MOTION S™-60HC



Features

EASILY CONFIGURED TO MEET YOUR NEEDS

PLATFORM OPTIONS

- Steel 8 ft (2.44 m) (standard)
- Steel 6 ft (1.83 m)
- Steel 6 or 8 ft (1.83 or 2.44 m) tri-entry

POWER OPTIONS

- Ford gas/LPG 75 hp (56 kW)
- Deutz diesel 48 hp (35.8 kW)
- Perkins diesel 51 hp (38 kW)

DRIVE OPTIONS

- 2WD
- 4WD

AXLE OPTIONS

- Active oscillation
- Non-oscillating

TIRE OPTIONS

- Rough terrain air-filled (standard)
- Rough terrain foam-filled
- Rough terrain non-marking (air or foam-filled)
- Sealant treated air-filled

STANDARD FEATURES

MEASUREMENTS

- 66 ft (20.30 m) working height
- 50 ft 10 in (15.48 m) horizontal reach with 750 lb (340 kg) load
- 40 ft 8 in (12.39 m) horizontal reach with 1,250 lb (567 kg) load
- 750 lb (340 kg) platform load in maximum outreach zone
- 1,250 lb (567 kg) platform load in maximum capacity zone

PRODUCTIVITY

- Dual capacity with automatic envelope control
- Electronic platform load and position monitoring
- 3 person capacity deck
- Self-leveling platform
- Hydraulic platform rotation
- Fully proportional Hall effect joystick controls
- Fuel select switch on platform and ground control panels (Gas/LPG models)
- Drive enable
- AC power cord to platform
- Tilt alarm
- Hour meter
- Horn
- 360° continuous turntable rotation
- Positive traction drive
- Two speed wheel motors
- Lockable platform control box cover

POWER

- All engines are emissions compliant
- 12 V DC auxiliary power
- Anti-restart engine protection
- Auto engine fault shutdown
- Swing out engine tray
- Intake air heater (Deutz engine)



OPTIONS & ACCESSORIES

PRODUCTIVITY

- Platform swing gate
- Half-mesh platform inserts with swing gate
- Platform top auxiliary rail
- Arc Pro 275™ Heavy-Duty Welder package
- Welder ready package
- Weld leads to platform
- Air line to platform
- Hydraulic oil cooler
- Arctic hydraulic oil
- Arctic hose package
- Basic hostile environment kit
- Deluxe hostile environment kit
- Deluxe aircraft protection package (6 ft platform only)
- Thumb rocker steer
- Tool tray
- Fluorescent tube caddy
- Pipe cradle (pair)
- Alarm package
- Panel cradle package
- Platform work lights
- Front driving lights
- Second battery
- Tow package

POWER

- Engine gauge package
- AC Generator Packages (3000 or 3500 watts)
- Cold Start Packages
- Diesel scrubber/spark arrestor muffler
- Diesel spark arrestor muffler
- LPG tank 33.5 lb (15.19 kg) capacity
- Additional LPG tank with carrier
- Retained key selector switch

Genie United States

18340 NE 76th Street
P.O. Box 97030
Redmond, Washington 98073-9730

Telephone **(425) 881-1800**
Toll Free in USA/Canada **800-536-1800**
Fax (425) 883-3475

Genie Europe

The Maltings,
Wharf Road
Grantham NG31 6BH
U.K.

Telephone **+44 (0)1476 584333**
Fax +44 (0)1476 584334

Email: infoeurope@genieind.com

Distributed By:

Bigge Equipment Co.

10700 Bigge Avenue
San Leandro, CA 94577
Phone: (877) 244-4380 or (510) 639-4041
Fax: (510) 877-3004
Email: cranesales@bigge.com
Web site: www.bigge.com/crane-sales

Effective Date: July, 2007. Product specifications and prices are subject to change without notice or obligation. The photographs and/or drawings in this document are for illustrative purposes only. Refer to the appropriate Operator's Manual for instructions on the proper use of this equipment. Failure to follow the appropriate Operator's Manual when using our equipment or to otherwise act irresponsibly may result in serious injury or death. The only warranty applicable to our equipment is the standard written warranty applicable to the particular product and sale and we make no other warranty, express or implied. Products and services listed may be trademarks, service marks or trade-names of Terex Corporation, Genie Industries, Inc. and/or their subsidiaries in the U.S.A. and many other countries and all rights are reserved. Terex® is a Registered Trademark of Terex Corporation in the U.S.A. and many other countries. Genie® is a Registered Trademark of Genie Industries, Inc. in the U.S.A. and many other countries. Genie is a Terex Company. Copyright © 2007 Terex Corporation.

S60HC 3.5K 0707E. Part No. 109415

www.genieindustries.com

