

# LOOKING FOR MEDI-CAL PEER SUPPORT TRAINING?

## HERE IS WHAT YOU WILL LEARN:

- Core Competencies required to become a Medi-Cal Peer Support Specialist.
- How to Harness Your Lived Experience to empower others through peer support.
- Collaborative Approaches to effectively navigate healthcare systems and resources.
- Peer Support Principles and Practices to help you support those facing mental health challenges.

## BY THE END OF THE PROGRAM, YOU WILL HAVE:

- Training Certification for completing 80+ hours of Medi-Cal Peer Support Specialist Training.
- Support from an Employment Specialist to guide you through the state certification exam and help you find the best job with your new certification.

## CONTACT

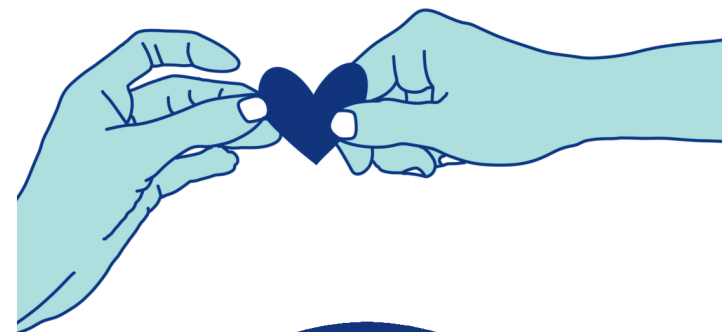
415-421-2926  
APPT@MENTALHEALTHSF.ORG  
MENTALHEALTHSF.ORG

870 MARKET STREET, SUITE 658  
SAN FRANCISCO, CA 94102



## ADVANCED PEER PROFESSIONAL TRAINING

WANT TO JOIN THE PEER MOVEMENT?



**MHAOSF**  
MENTAL HEALTH ASSOCIATION OF SAN FRANCISCO

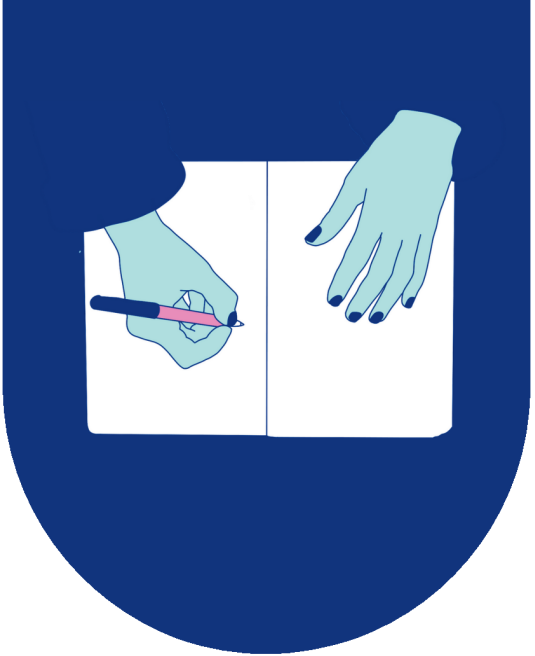
MENTALHEALTHSF.ORG

# WHAT IS APPT?

As an industry leader, MHASF is proud to offer the Advanced Peer Professional Training (APPT), an online, 80-hour course approved by CalMHSA and DHCS. This training gives you the knowledge and skills to become a Peer Support Specialist, whether you're starting a new career in mental health or growing in your current role.

**APPT is designed for caring individuals. Make a lasting, positive difference.**

Become a certified peer support specialist through our CalMHSA-approved program!



# YOUR JOURNEY BEGINS HERE

No one should walk alone on their journey to wellness. This is your opportunity to turn your lived experience into a beacon of hope for others, offering them the strength to overcome, the courage to embrace their own potential, and the knowledge that they are never alone in their struggles.

**95% of APPT trainees receive a certificate of completion**

# READY TO MAKE A DIFFERENCE?

Your journey can make all the difference in someone else's story of recovery. APPT is your gateway to making a lasting, positive change in the lives of others.



*"After the training I feel better equipped to practice peer supportive work and to supervise other peers as a manager. I am excited to take the exam and become certified!"*

—APPT Participant