



Jandraline

A new thinking, a new  
humanity, new objectives,  
*a New City*

# The Objectives

- ❖ A new societal mode including:
  - A new approach to the global economy
  - A new systemic mode induced by new thoughts
  - A reform of the management of aspects of life in its daily life
  - Harmony with nature and the living, where humans regain their rightful place
  - Collaboration
  
- ❖ Coverage of basic needs: meeting the first two levels of the Pyramid of Maslow, free of charge, allowing everyone to be more fulfilled, calmer and able to evolve without having to devote time and energy to survive
- ❖ Building a new living environment in accordance with our ideas
- ❖ Fulfillment and accomplishment for everyone
- ❖ A city that represents an inspiring and innovative mode
- ❖ Inclusivity
- ❖ Common sense
- ❖ Joy
- ❖ Means
- ❖ Happiness
- ❖ Innovative projects





# Urban Planning, Architecture, and Developments

- A harmonious city in symbiosis with nature and generating well-being
- Biogenic buildings designed and thought specifically for their location and purpose
- A more organic architecture, curved forms, the re-emergence of radionics
- Optimization of bioclimatic inputs
- A life organization that stimulates autonomy and Joy
- Spaces adapted to the different needs, places to gather and meet
- Smooth traffic axes preserving peace and serenity

# *"Human at the heart of Nature, and Nature at the heart of the city of Jandraline."*

- A city Inspired by nature and seamlessly integrating with it.
- A fractal-based organization: what the city has to offer can be found at neighborhood level.
- A rejuvenating city center: flower gardens, fountains, nature, parks, trails, relaxation and meeting areas.
- High autonomy, cohesion, dynamics, and happiness.
- Energy-independent buildings, built in an optimized way for sustainability and integration with nature.
- An urban plan enhancing reconciliation and cohesion, preserving privacy and individual needs, arousing wonder especially due to the use of natural materials designed to have a radionically biogenic influence
- Facilities for animals, domestic and wild, enabling safe reconciliation with humans and side-by-side evolution

- Shops, health and safety centers, learning places, discovery, and progress.
- Neighborhoods specialized in creation and respectful industry
- Simple, smooth, fast, and quiet traffic with fleet vehicle available at the entrance of the city and under the dwellings.
- Underground networks for rapid or voluminous transportation, specifically for waste and recycling management.
- Discreet and efficient public transportation.
- An extensive network of cycling and pedestrian paths.
- An underground train station and a heliport..



# A Place For Everyone

- Humans
- Animals
- Plants
- Minerals

In a harmonious, balanced, and adapted way to our degree of evolution, we are utopians and inclusive (in line with nature once again), but certainly not naive. Our projects are concrete, reliable and consistent, designed to be solid and sustainable.



# Nature at the heart of Jandriline

We are inspired by the way nature works, including it in an appropriate and respectful manner, we are aware of our place within it and of the place it occupies in our lives.

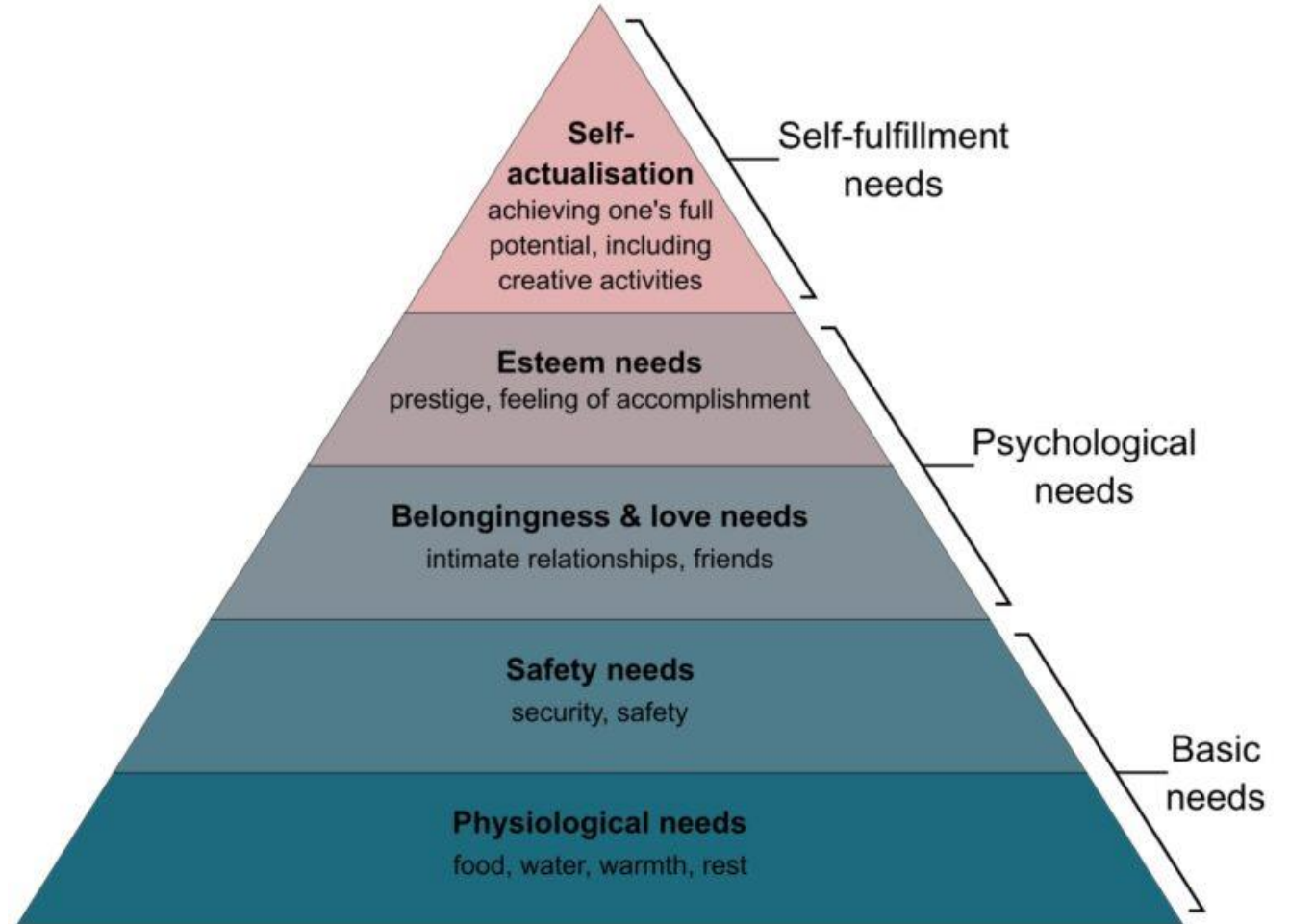
We highlight technology, being aware that our collaboration with nature will allow us to go much further in a natural and harmonious way.



# In daily life

- Reform of education and learning
- Innovative security
- Harmonization of life stages and intergenerational collaboration
- New economic system
- Flawless security
- Cutting-edge medical system
- Respectful agriculture
- Respecting natural cycles in all areas of existence, from work to family life, from open-mindedness to access to technology
- Basic necessities free of charge

## The Maslow's Hierarchy of Needs





# Health and structures

*Unconditional free access to all forms of healthcare, both for curative and preventive care.*

## **Emergencies:**

- Unconditional 24/7 reception with efficiency, dignity, and privacy.
- Cutting-edge equipment accessible and available to all.
- Frequent rotation of caregivers on duty to maintain good working and reception conditions.
- Simple and efficient information management.

## **Structures and management:**

- A hospital center supported by health houses fairly distributed throughout areas. Architecturally biogenic and conducive to regeneration.
- A holistic approach.
- Available, attentive, serene professionals, who listen and are systematically trained with a global approach, in constant quest for interdisciplinary synergy.
- Balanced and respectful internal organization.
- Personalized care and adapted protocols for different sensitivities and needs.
- Quantum therapies and bioresonance.
- Natural pharmacopeia, without synthetic products, without deleterious effects, and perfectly integrated to Life, both in its conception and use.



# Birth and early childhood

- Birth: personalized preparation and support, respecting the natural rhythm, in body-temperature water, and within an intimate, calm, and preserved setting, free from a medicalized atmosphere. Follow-up and support for the first steps if necessary.
- Early childhood: establishment of temporary care structures, for the children's interaction with animals in a natural environment and within the framework of an educational farm.
- From early childhood to adulthood and throughout life, the human being is at the heart of the educational system, their development and learning being the results of their efforts, empowerment, and natural need for evolution.



# Giving and sharing

Learning, education, and training

Free and *unconditional* for all

- 
- ✓ All educational needs are covered from early childhood to adulthood, making lifelong learning, deepening, and career changes possible, integrating the developmental rhythms of each age. Physiologically adapted school schedules.
  - ✓ All fields are covered by comprehensive, precise, and enriching training programs within adapted and inspiring surrounding. Experienced and engaging instructors approaching each discipline holistically, facilitating a holistic exploration and learning. This is made possible, among other factors, through inclusively designed programs reconciling all aspects of learning, knowledge, and understanding.



# School System

## Learning environment:

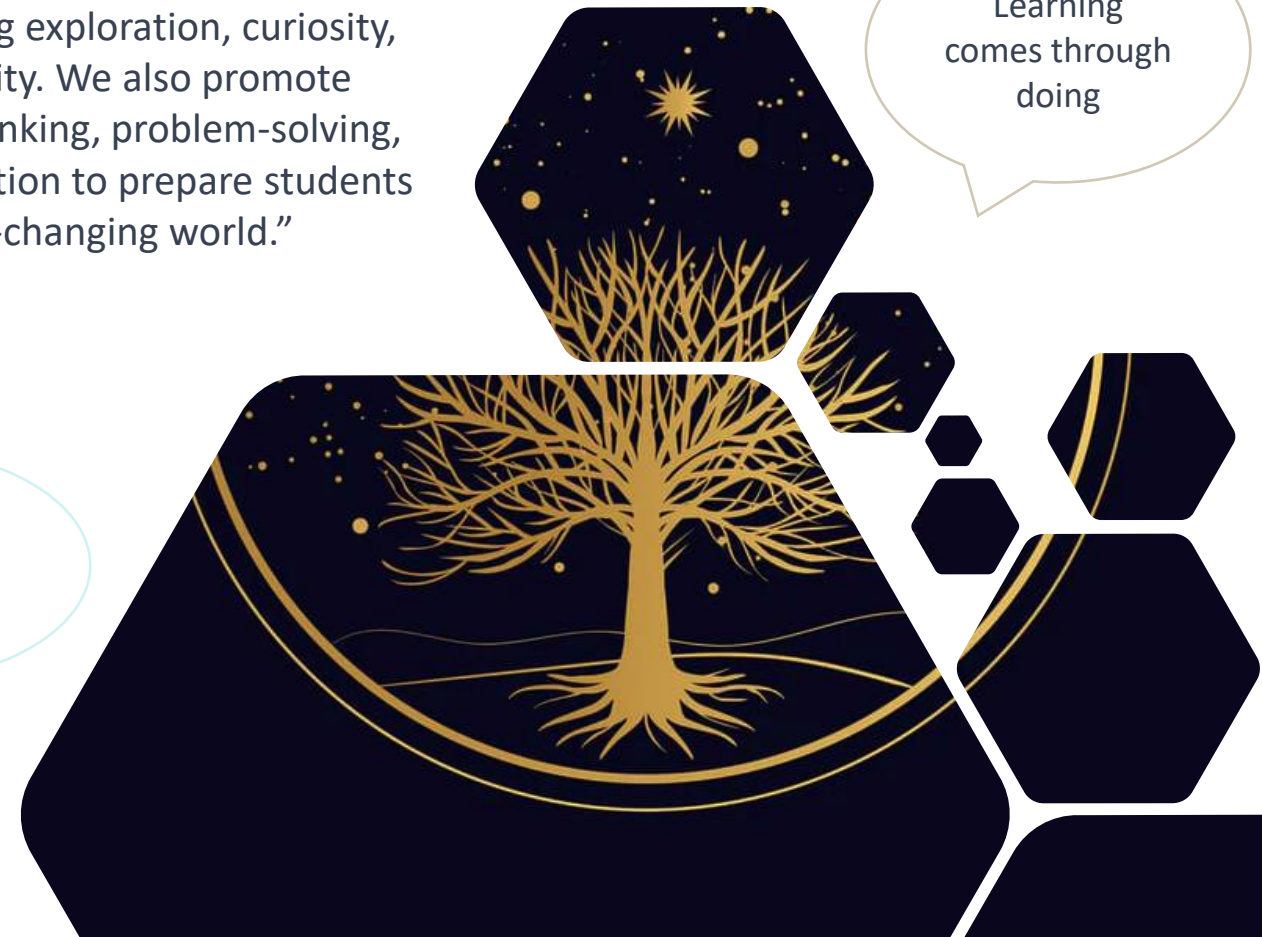
- A safe, caring, inclusive, and joyful surrounding
- An effective, coherent, evolved, and guided learning approach
- Valued and respected students
- Playful and interactive methods
- Individual and collective goals
- Access to everything that fosters progress and learning, without restraint or conservatism
- Ongoing support and guidance to effort
- Development according to rhythm and talent
- Observation, experimentation, and transmission
- A solid foundation
- Adapted structures that favour concentration, curiosity, learning, and autonomy

"We establish a secure, caring, and inclusive learning environment that promotes exploration, curiosity, and creativity. Each student is supported to reach their full potential with appreciation and respect. Our approach is stimulating and diverse, encouraging exploration, curiosity, and creativity. We also promote creative thinking, problem-solving, and innovation to prepare students for an ever-changing world."

"I am happy when I have the sensation of tapping into my full potential. My efforts have made me become the person I want to be."

Learning comes through doing

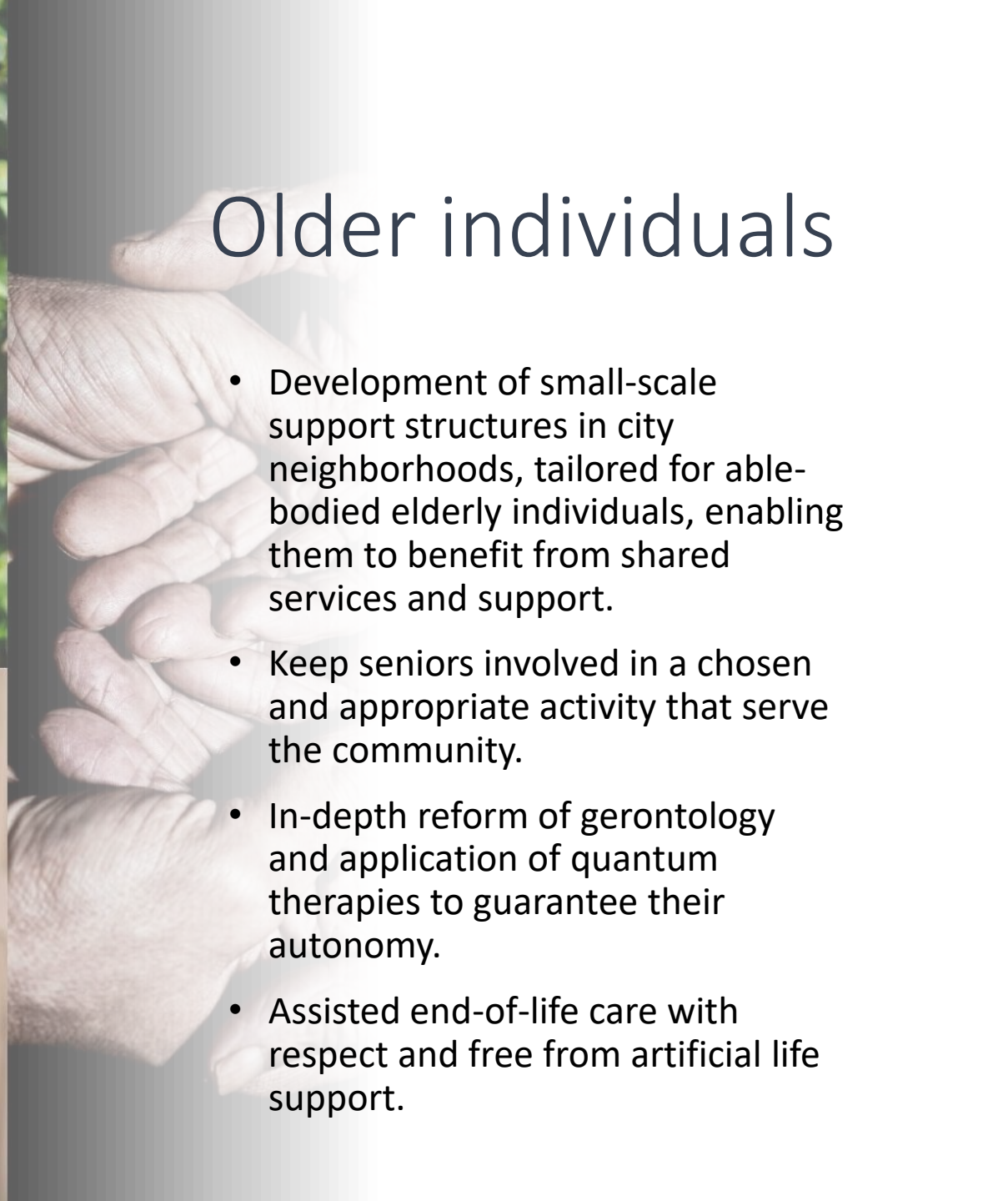
The student must surpass the master

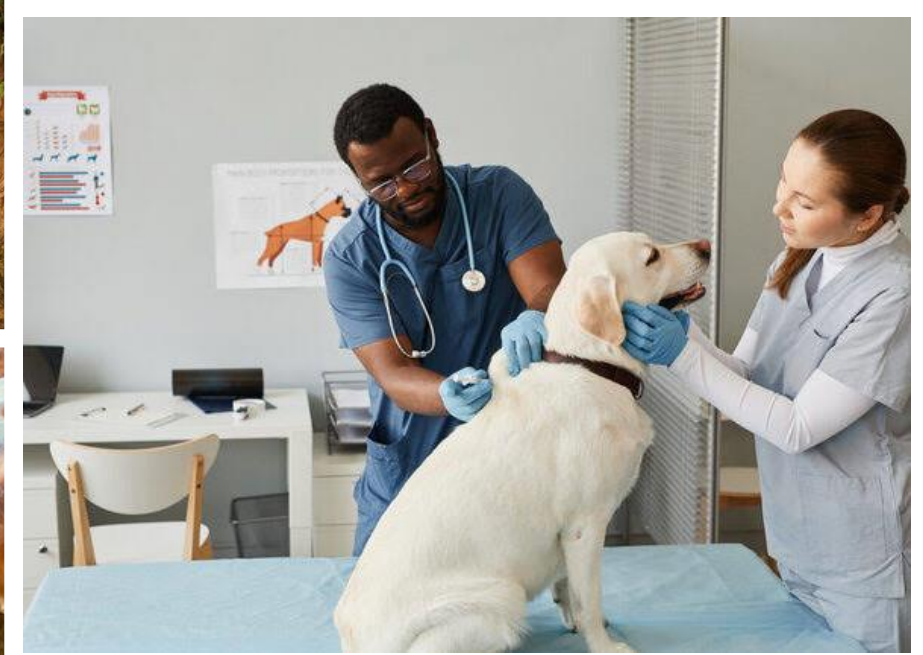




# Older individuals

- Development of small-scale support structures in city neighborhoods, tailored for able-bodied elderly individuals, enabling them to benefit from shared services and support.
- Keep seniors involved in a chosen and appropriate activity that serve the community.
- In-depth reform of gerontology and application of quantum therapies to guarantee their autonomy.
- Assisted end-of-life care with respect and free from artificial life support.





## Veterinary care and emergency areas

- Unconditional free access to all forms of healthcare for both curative and preventive treatment.
- Equitably distributed veterinary medical facilities.
- 24/7 emergency services.

## Inclusion of the Kingdoms of Nature

Automatic right granted to the animal, plant, and mineral kingdoms to live and thrive in peace, dignity, and serenity, free from the fear of humans. Human being is acknowledged as being obligated to serve as a source of protection and evolution for them.

Living beings - animals, plants, and minerals - are collectively perceived as conscious beings endowed with intelligence and sensitivity. They are granted, as such, rights to ensure their safety, protection when necessary, as well as their integrity.

New regulations are put in place to promote collaboration with the animal realm, taking into account their physical integrity and natural cycles. Similarly, these regulations aim to preserve the plant realm, especially trees and shrubs, and to limit excavation, extraction, and earthmoving practices in the mineral realm, considering its sensitivity.

# Food: production, management, and distribution



*Respect,  
moderation,  
consideration,  
consciousness*

## Responsible production:

- Agroforestry, vertical greenhouses (radiogenically biogenic, built from telluric energy conducting materials), permaculture, aquaponics (...)
- Production of fruits, vegetables, cereals, aromatic and medicinal plants, spices, and any form of vegetation we might need, in coherence, respect, and cooperation with nature, based on quality rather than quantity
- Use of natural fertilizers and prohibition of biocidal products
- Local production and export of surpluses. Distribution cooperatives for surplus production from private gardens
- Laboratory-grown meat production, derived from respectful DNA sampling of healthy animals
- Seafood products and their importation will be rigorously controlled.

## Smart management

- Seasonal production, including for milk, honey, and eggs
- Deindustrialization of Life
- Processed food in a respectful manner without the use of chemical additives or preservatives

## Free distribution

- Unconditional free distribution of essential food products. Only processed or cooked products by artisans or restaurants will remain paid for.
- Architecturally biogenic distribution facilities and adapted facilities to maintain nutritional quality of foods.
- Farmers, beekeepers, scientists, distributors, and anyone who contributes to make food accessible to all will be compensated through the governance system.
- Our food paradigm is also set to undergo a drastic evolution, aiming for something more dignified.



# Security, protection, and assistance

- Preemptive solutions provided
- Reliable, competent teams fostering harmony in relationships
- Stability
- Immediate actions
- Simple, logical, and flawless laws leading to immediate consequences
- Conscious, serene, and respectful residents





# Unfiltered and accessible knowledge

- Easy access to all free information for everyone.
- Selfless, respectful, unbiased, and integral journalism, without personal business or political or financial interests, without information trusts, breach of trust, or blackmail; completely transparent and independent.
- Privileged spaces for learning, innovation, and intelligent and seamless access to all technology; in inspiring, harmonious settings conducive to innovation, architecturally designed to inspire and naturally foster progress.
- Emergence of professions combining animation and knowledge transmission, fostering emulation and bringing back curiosity, knowledge, personal growth, and the co-evolutionary co-creation of our world, TOGETHER.



# A new economic model

An economy based on the concept of free energy.

No taxation, universal basic income provided to every adult regardless of salary, and free access to everything that constitutes the first two levels of Maslow's Hierarchy of Needs.

A numerical decimation. Money disperses if not used, and a ceiling naturally prevents accounts from exceeding 1 million monetary units, so that life is no longer based on the economy of debt or business, but on the natural foundations of Life, just as nature does.



# Fulfillment

In order to live in Jandraline, and subsequently in cities that follow a similar societal model, it's important to recognize that no one will be exempt from making efforts.

Our model works when people are involved, able to channel their passions into collaborative efforts for the benefit of all, and when the consciousness of humanity has evolved enough to shift from "me first" to "I'm aware that I'm contributing to

something greater, in which I'm included." We're not seeking to standardize anything. Our aim is to forge paths of fulfillment, highlight natural talents, and harness vocations where others might have harnessed individuals.

Natural talents and personal aspirations are placed at the forefront of everyone's career decisions.

Work becomes a creation, a piece of art.

Work should reflect a *raison d'être*.

"Ikigai" is a Japanese term that represents the intersection of four elements: what you love, what you are good at, what the world needs, and what you can be paid for. It's often described as the "reason for being" or "joy of living." » Finding your ikigai involves discovering the harmony and balance between these four aspects, leading to a sense of fulfillment and contentment.



# *Our motto: Consciousness*



Developing one's consciousness is essential, creating an invisible link between everything. As consciousness expands, the perception of the world changes, influencing life and thought. Being self-aware, understanding one's own impact and the world, requires attention and observation. Recognizing the diverse consciousnesses that constitute the reality of our world leads to evolution in our interactions. Consciousness enables a different life with a new mode of thinking, promoting constructive action and autonomy, creating an intelligent collective.

Currently, six types of consciousness are distinguished:

1. Individual Consciousness
2. Social Consciousness
3. Emotional Consciousness
4. Temporal Consciousness
5. Psychological Consciousness
6. Moral Consciousness

Being truly conscious means living in the moment, paying attention to details and thoughts, enhancing understanding and discernment. This ongoing evolution through consciousness brings a better self-awareness and awareness of our impact on others. For instance, building consciously involves respecting nature and others, creating evolutionary methods that safeguard all forms of life from the consequences of selfish thinking, thus non-holistic.

# *Jandraline* in a nutshell:

- A societal reform to place Life and evolution at the core of our lives
- A healthy, biogenic, and inspiring environment designed as a living organism
- Free access to everything included in the first two levels of Maslow's Hierarchy of Needs
- Complete cooperation with nature
- A secure and reassuring framework
- Access to all knowledge, technology, and know-how through sharing and collaboration
- Learning by example, enabling each generation to inspire the next, introducing human nature's evolution as a principle.
- Consciousness, joy, respect, consideration, and an evolving framework
- Efforts
- Accomplishment as the primary goal



*Welcome to the world of tomorrow,  
that we are building today.*

