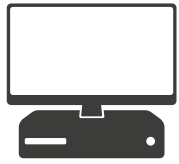


ENF

**Product
Catalogue**

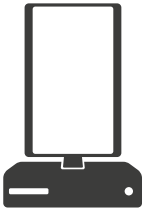
2024

Index



ENF Studio

2



ENF Studio Spine

9



ENF Pro

11



ENF Physio

16



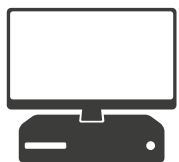
ENF Sport

16



ENF X

16



ENF Studio Beauty

17



ENF Pro Beauty

19



ENF Accessories

21

ENF Studio

The most important ENF Medical Device

ENF Studio can be used in two modes:

Custom Therapy in which it is possible to search for the treatment point and then choose the desired therapeutic effect among the 15 predefined ones.

3D Protocols in which it is possible to browse the pathology library of the selected module and choose the associated protocol.

The protocols have been designed to simplify the execution of the treatment by graphically representing on the human body in 3D where to perform the chosen treatment, using probes that are not dependent on the operator, and offer a pre-set sequence of therapeutic effects.

Furthermore, the touch screen display has a great effect on the patient who perceives the added value of the application of ENF therapy.

Complete Anatomy **3D**

ENF Studio hosts 3D Human Male and Female Anatomy made up of over 8000 selectable elements organized into 17 levels. At any time and with a few simple taps you can navigate and explore the human body and know the name of each anatomical element.



Technical Maps **3D**

In the historical evolution of medicine, various diagnostic methods and applications of therapies have been developed. The human body treatment techniques designed with 3D graphics are highly understandable and spectacular. Complete touchscreen interaction and correlations between systems and elements of the human body facilitate clinical understanding and reasoning. Thanks to ENF Studio you can now have the best-known technical maps and use them with all the advantages that three-dimensionality can offer you.








- Dermatomes**
- Myofascial Chains**
- Neuromotor Points**
- Kinesiology Taping**
- Trigger Points**
- Osteopathy**
- TCM Meridians**
- Reflex Zones**
- Lymphatics Drainage**

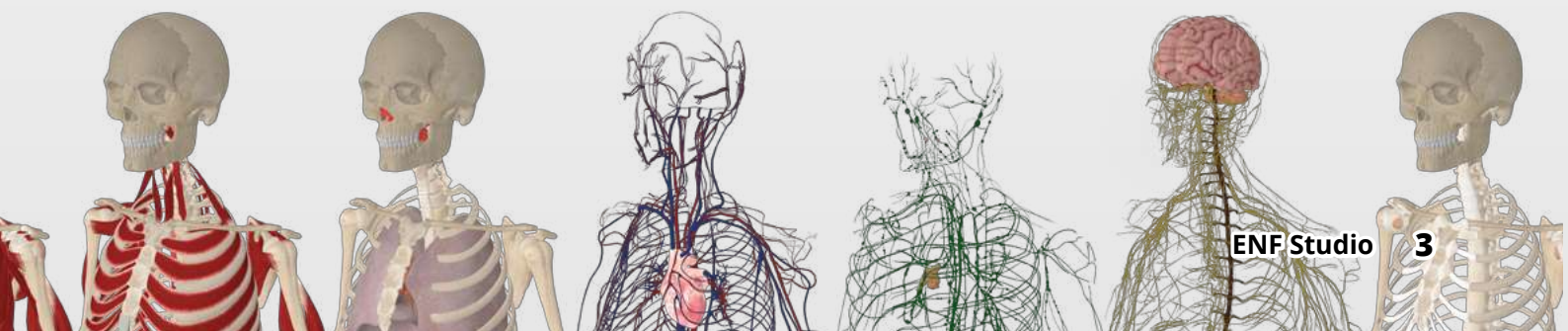


Software Modules

ENF Studio is a ideal device for the Physiotherapeutic Studio, multi-specialist clinic and hospital department thanks to the fully configurable software up to 9 modules that can be installed according to the medical specialty.

-  **Physiotherapy**
-  **Sport Physiotherapy**
-  **Post-Surgery Orthopedics**
-  **Osteopathy**

-  **Pelvic Floor Man**
-  **Pelvic Floor Woman**
-  **Dental Care**
-  **Neurology**
-  **Urology**
-  **Gynecology**
-  **Physioaesthetics**





ACUTE - Upper Limbs

- Bursitis (Shoulder)
- Partial Injury of Supraspinatus Tendon (Shoulder)
- Luxation (Shoulder)
- Contracture Brachial Biceps (Arm)
- Muscular Injury Brachial Biceps (Arm)
- Sprain (Elbow)
- Luxation (Elbow)
- Ligament Strain (Elbow)
- Bruise (Forearm)
- Hematoma (Forearm)
- Muscular Strain (Forearm)
- Sprain (Wrist)
- Luxation (Wrist)
- Sprain Finger (Hand)
- Luxation Finger (Hand)
- Microfracture (Hand)

ACUTE - Lower Limbs

- Sprain (Hip)
- Luxation (Hip)
- Muscular Strain Superior Gemellus (Hip)
- Contracture Quadriceps (Thigh)
- Bruise (Thigh)
- Hematoma (Thigh)
- Muscular Injury Quadriceps (Thigh)
- Bursitis (Knee)
- Sprain (Knee)
- Partial Injury of Patellar Tendon (Knee)
- Luxation (Knee)
- Ligament Strain (Knee)
- Sprain (Ankle)
- Luxation (Ankle)
- Sprain Finger (Foot)
- Luxation Finger (Foot)
- Microfracture (Foot)

ACUTE - Trunk

- Torticollis (Neck)
- Whiplash (Neck)
- Contracture Trapezius (Back)
- Bruise Lumbar (Back)
- Hematoma (Back)
- Low Back Pain (Back)
- Microfracture Vertebra (Back)
- Ligament Strain Vertebra (Back)

- Muscular Strain Lumbar (Back)
- Muscular Injury Back Lumbar (Back)

CHRONIC - Upper Limbs

- Post-Operative Adhesions (Shoulder)
- Arthrosis (Shoulder)
- Inflammatory Bursitis (Shoulder)
- Capsulitis (Shoulder)
- Luxation (Shoulder)
- Frozen Shoulder (Shoulder)
- Rotator Cuff Syndrome (Shoulder)
- Tendonitis Long Head of Biceps Brachii (Shoulder)
- Difficult Consolidation of Humerus Fracture (Arm)
- Edema (Arm)
- Hematoma (Arm)
- Organized Hematoma (Arm)
- Humerus Fracture Outcomes (Arm)
- Muscle Hypotonia Biceps (Arm)
- Muscle Hypotrophy Biceps (Arm)
- Lymphoedema (Arm)
- Microfracture Humerus (Arm)
- Arthrosis (Elbow)
- Sprain (Elbow)
- Epicondylitis (Elbow)
- Epicondylitis (Elbow)
- Luxation (Elbow)
- Arthrosis (Wrist)
- Sprain (Wrist)
- Luxation (Wrist)
- Carpal Tunnel Syndrome (Wrist)
- Algodystrophy Thumb (Hand)
- De Quervain Syndrome Thumb (Hand)
- Arthrosis Finger (Hand)
- Baseball Finger (Hand)
- Sprain Finger (Hand)
- Trigger Finger (Hand)
- Luxation Finger (Hand)
- Dupuytren's Contracture (Hand)

CHRONIC - Lower Limbs

- Edema (Leg)
- Lymphoedema (Leg)
- Coxarthrosis (Hip)
- Sprain (Hip)
- Luxation (Hip)
- Necrosis (Hip)
- Contracture Quadriceps (Thigh)
- Bruise (Thigh)
- Difficult Consolidation of Femur Fracture (Thigh)
- Hematoma (Thigh)

- Organized Hematoma (Thigh)
- Femur Fracture Outcomes (Thigh)
- Muscle Hypotonia Quadriceps (Thigh)
- Muscle Hypotrophy Quadriceps (Thigh)
- Muscular Injury Biceps Femoris (Thigh)
- Post Operative Adhesions (Knee)
- Bursitis (Knee)
- Sprain (Knee)
- Gonarthrosis (Knee)
- Cartilage Injury (Knee)
- Partial Injury of Patellar Tendon (Knee)
- Luxation (Knee)
- Ligament Strain (Knee)
- Patellar Tendonitis (Knee)
- Pes Anserinus Tendonitis (Knee)
- Muscular Strain Superior Gemellus (Calf)
- Arthrosis (Ankle)
- Sprain (Ankle)
- Luxation (Ankle)
- Achilles Tendon Tendinitis (Ankle)
- Hallux Valgus
- Arthrosis Finger (Foot)
- Sprain Finger (Foot)
- Baseball Finger (Foot)
- Plantar Fasciitis (Foot)
- Luxation Finger (Foot)
- Metatarsalgia (Foot)
- Microfracture (Foot)
- Sudeck Syndrome (Foot)

CHRONIC - Trunk

- Tension Headache (Neck)
- Neck Pain due to Muscle Tension (Neck)
- Neck Pain due to Cervical Hernia (Neck)
- Whiplash (Neck)
- Cervical Ligament Strain (Neck)
- Torticollis (Neck)
- Cervicobrachialgie due to Cervical Hernia (Back)
- Cervicobrachialgie due to Muscle Tension (Back)
- Trapezius Muscular Contracture (Back)
- Lumbar Post Operative Adhesions (Back)
- Lumbar Bruise (Back)
- Hematoma (Back)
- Organized Hematoma (Back)
- Muscle Hypotonia (Back)
- Muscle Hypotrophy (Back)
- Recurrent Chronic Low Back Pain (Back)
- Lumbosciatic Pain due to Lumbar Hernia (Back)
- Lumbosciatic Pain due to Muscle Tension (Back)
- Microfracture Vertebra (Back)

- Muscle Strain (Back)
- Lumbar Muscular Injury (Back)
- Lumbosacral Pressure Ulcer (Back)
- Osteitis Pubis (Pelvic)

GENERAL

- Rheumatoid Arthritis
- Lupus
- Widespread Arthritis
- Widespread Arthrosis
- Fibromyalgia Syndrome
- Osteoporotic Syndrome



Sport Physiotherapy

LOCAL - Upper Limbs

- Muscle Relaxing (Upper Limbs)
- Muscle Strengthening (Biceps Right)
- Muscle Strengthening (Deltoid Right)
- Neuromuscular Stimulation (Biceps Right)
- Neuromuscular Stimulation (Deltoid Right)
- Passive Stretching (Upper Limbs)

LOCAL - Lower Limbs

- Muscle Relaxing (Lower Limbs)
- Muscle Strengthening (Biceps Femoris Right)
- Muscle Strengthening (Gastrocnemius Right)
- Muscle Strengthening (Gluteus Right)
- Muscle Strengthening (Quadriceps Right)
- Acute Osteitis Pubis (Right Side)
- Neuromuscular Stimulation (Biceps Femoris Right)
- Neuromuscular Stimulation (Gastrocnemius Right)
- Neuromuscular Stimulation (Gluteus Right)
- Neuromuscular Stimulation (Quadriceps Right)
- Passive Stretching (Lower Limbs)

LOCAL - Trunk

- Muscle Strengthening (Rectus Adbominis)
- Muscle Strengthening (Transversus Abdominis)
- Muscle Strengthening (Pectoralis Left)
- Neuromuscular Stimulation (Rectus Adbominis)
- Neuromuscular Stimulation (Transversus Abdominis)
- Neuromuscular Stimulation (Pectoralis Left)

GENERAL

- Passive Stretching (Total)



Post-Surgery Orthopedics

IMMEDIATE RECOVERY OR ARTICULAR AND FUNCTIONAL RECOVERY - Upper Limbs

- P.S. Bursitis (Shoulder)
- P.S. Rotator Cuff (Shoulder)
- P.S. Bone Fracture - Reduction (Shoulder)
- P.S. Joint Dislocation (Shoulder)
- P.S. Prosthesis (Shoulder)
- P.S. Calcific Tendinitis (Shoulder)
- P.S. Bursitis (Elbow)
- P.S. Epicondylitis (Elbow)
- P.S. Epicondylitis (Elbow)
- P.S. Bone Fracture - Reduction (Elbow)
- P.S. Ligament - Reduction (Elbow)
- P.S. Nerve - Compression (Elbow)
- P.S. Prosthesis (Elbow)
- P.S. Calcific Tendinitis (Elbow)
- P.S. Cyst - Removal (Wrist)
- P.S. Bone Fracture - Reduction (Wrist)
- P.S. Prosthesis (Wrist)
- P.S. De Quervain Syndrome (Wrist)
- P.S. Calcific Tendinitis (Wrist)
- P.S. Carpal Tunnel (Wrist)
- P.S. Cyst - Removal (Hand)
- P.S. Trigger Finger (Hand)
- P.S. Bone Fracture - Reduction (Hand)
- P.S. Dupuytren's Contracture (Hand)
- P.S. Prosthesis (Hand)

IMMEDIATE RECOVERY OR ARTICULAR AND FUNCTIONAL RECOVERY - Lower Limbs

- P.S. Prosthesis (Hip)
- P.S. Bone Fracture - Reduction (Thigh)
- P.S. Bursitis (Knee)
- P.S. Baker's Cyst (Knee)
- P.S. Varum-Valgum Knee - Correction (Knee)
- P.S. Collateral Ligament - Reconstruction (Knee)
- P.S. Cruciate Ligament - Reconstruction (Knee)
- P.S. Osteocartilaginous Lesion (Knee)
- P.S. Meniscus (Knee)
- P.S. Prosthesis (Knee)
- P.S. Kneecap - Instability (Knee)
- P.S. Calcific Tendinitis (Knee)
- P.S. Bone Fracture - Reduction Tibia-Fibula (Leg)

- P.S. Bone Fracture - Reduction (Ankle)
- P.S. Ligament - Reconstruction (Ankle)
- P.S. Prosthesis (Ankle)
- P.S. Calcaneal Spur (Ankle)
- P.S. Tendon - Reconstruction (Ankle)
- P.S. Calcific Tendinitis (Ankle)
- P.S. Bunion (Foot)
- P.S. Mallet Finger (Foot)
- P.S. Metatarsalgia (Foot)
- P.S. Morton's Neuroma (Foot)
- P.S. Flat Feet-Pes Cavus (Foot)



Osteopathy

STRUCTURAL TECHNIQUES

- Neck Pain + TRUST
- Cervicobrachialgie + TRUST
- Torticollis + TRUST
- Bursitis (ex: Shoulder) + TRUST
- Capsulitis + TRUST
- Epicondylitis + TRUST
- Carpal Tunnel + TRUST
- Muscular Contracture (ex: Paravertebrals) + TRUST
- Back Pain + TRUST
- Low Back Pain + TRUST
- Sciatica + TRUST
- Osteitis Pubis + TRUST

SKULL SACRAL TECHNIQUES

- Membranous Balance - PHASE 1
- Membranous Balance - PHASE 2

VISCERAL FASCIAL TECHNIQUES

- Neck Pain
- Cervicobrachialgie
- Back Pain
- Low Back Pain
- Chronic Bronchitis
- Asthma

NEUROLYMPHATIC TECHNIQUES

- Upper Limbs Lymphedema
- Lower Limbs Lymphedema
- Joint Effusion (ex: Knee)
- Entrapment Neuropathy (ex: Ulnar Nerve)
- CNerve Compression (ex: Sciatic Nerve)



Pelvic Floor Man

GENERAL

- Testicular Pain (Pudendal Neuralgia)
- Male Urinary Incontinence
- Post-Surgery
- Prostatitis



Pelvic Floor Woman

GENERAL

- Pelvic Pain (Pudendal Neuralgia)
- Female Urinary Incontinence
- Postnatal Hypotonia
- Post-Surgery
- Pelvic Organ Prolapse



Neurology

LOCAL - Face

- No Audiology Tinnitus (Face)
- Reversible Neurological Lesions Post-Local Anesthesia (Face)
- Reversible Neurological Lesions Post-Surgery (Face)
- Reversible Neurological Lesions Post-Trauma (Face)
- Bell's Palsy (Face)

LOCAL - Upper Body

- Spasmodic Torticollis 1st Session (Neck)
- Spasmodic Torticollis 2nd+ Session (Neck)
- Cervicobrachialgie due to Cervical Hernia (Trunk)
- Phantom Limb (Upper Limb)
- Post-Stroke Conditions (Upper Limb)
- Muscle Hypotonia Biceps (Upper Limb)
- Muscle Hypotrophy (Upper Limb)
- Reversible Neurological Lesions due to Compression (Upper Limb)
- Reversible Neurological Lesions due to Stretching (Upper Limb)
- Reversible Neurological Lesions Post-Local Anesthesia (Upper Limb)

- Reversible Neurological Lesions Post-Surgery (Upper Limb)
- Reversible Neurological Lesions Post-Trauma (Upper Limb)

LOCAL - Lower Body

- Pudendal Neuralgia (Pelvis)
- Neurogenic Bladder Dysfunction (Pelvis)
- Phantom Limb (Lower Limb)
- Post-Stroke Conditions (Lower Limb)
- Muscle Hypotonia Quadriceps (Lower Limb)
- Muscle Hypotrophy Quadriceps (Lower Limb)
- Reversible Neurological Lesions due to Compression (Lower Limb)
- Reversible Neurological Lesions due to Stretching (Lower Limb)
- Reversible Neurological Lesions Post-Local Anesthesia (Lower Limb)
- Reversible Neurological Lesions Post-Surgery (Lower Limb)
- Reversible Neurological Lesions Post-Trauma (Lower Limb)
- Lumbosciatic Pain due to Lumbar Hernia (Lower Limb)
- Morton's Neuroma (Lower Limb)
- Diabetic neuropathy (Lower Limb)

GENERAL

- Post-Stroke Conditions
- Parkinson Disease
- Paraplegia
- Tetraplegia Session 2+



Dental Care

GENERAL

- Gingival Abscess
- Cyst
- Post-Surgery Results
- Reversible Lesion Nervous Termination
- Bisphosphonate Necrosis
- Osseointegration
- Periodontitis
- Youth Periodontitis
- Pericoronitis
- Peri-implantitis Prevention and Care
- Bone Resorption



Urology

GENERAL

- Male Kidney Stone Disease
- Male Chronic Cystitis
- Male Renal Colic
- Peyronie's Disease
- Male Pudendal Nerve - Inflammation
- Pelvic Floor - Male Urinary Incontinence
- Urological Post-Surgery
Reversible Neurological Lesions
- Prostate - Prostatic Hyperplasia
- Prostatitis



Gynecology

GENERAL

- Female Kidney Stone Disease
- Female Chronic Cystitis
- Colica Renale Femminile
- Dysmenorrhea
- Endometriosis - Symptoms
- Female Pudendal Nerve - Inflammation
- Ovaries - Adnexitis
- Ovaries - Ovarian Cyst
- Ovaries - Ovarian Inflammation
- Pelvic Floor - Female Urinary Incontinence
- Pelvic Floor - Pelvic Inflammation
- Pelvic Floor - Hypotonia
- Gynecological Post-Surgery
Reversible Neurological Lesion
- Salpingitis



Physioaesthetics

LOCAL - Face

- Face - Anti-Wrinkle
- Face - Moisturizer
- Face - Lifting
- Face - Eye Contour

LOCAL - Upper Body

- Upper Limbs - Lymphatic Drainage

LOCAL - Lower Body

- Lower Limbs - P.E.F.S. First Phase
- Lower Limbs - P.E.F.S. Second Phase
- Lower Limbs - Lymphatic Drainage
- Buttocks - Toning

GENERAL

- Postural Relaxation
- Total Body Relaxation

ENF Studio

S P I N E

Specific treatments for the spinal column

The ENF Studio Spine is specifically dedicated to the treatment of the spine, whose main functions are: stability, mobility, containment. Irregularities or structural changes to the spinal column not only compromise its three main functions but favor a multitude of postural pathologies and organ malfunctions.

The **3D Protocols** of ENF Studio Spine proposes a method of using ENF technology to treat spinal deformities in an innovative and effective way.

Software Modules

The Modules of ENF Studio Spine allow you to carry out guided treatments to correct spinal deformities, improving posture, relieving pain and helping to regain psycho-physical well-being.



Paramorphisms



Dymorphisms



Spine Syndromes

Patient Card



For each patient the software keeps track of the therapeutic project and all the sessions performed, visualizing the achievement of the objectives.



Paramorphisms

GENERAL

- Scoliotic Attitude
- Cervical Hyperlordosis
- Lumbar Hyperlordosis
- Dorsal Kyphosis
- Cervical Straightening
- Lumbar Straightening
- Total Straightening
- Cervical Curve Reversal
- Dorsal Curve Reversal
- Lumbar Curve Reversal



Dysmorphisms

GENERAL

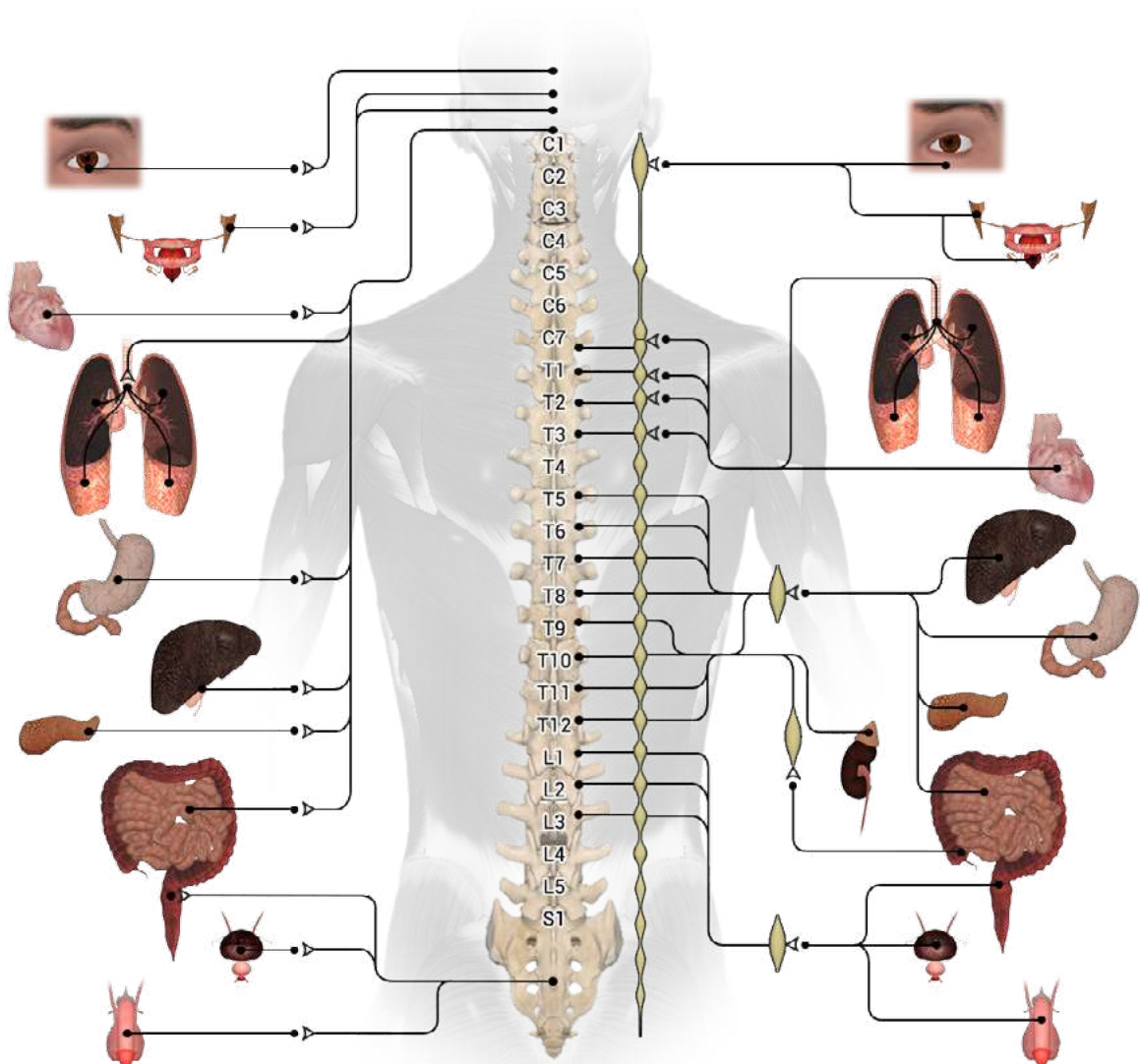
- S Italic Scoliosis
- Cervical Scoliosis
- Dorsal Scoliosis
- Lumbar Scoliosis



Spine Syndromes

GENERAL

- Muscle-tension Cervicobrachialgia
- Cervicobrachialgia from Hernia
- Muscle-tension Lumbosciatica
- Lumbosciatica from Hernia



ENF Pro



The new arrival in the ENF family

ENF Pro can be used in two modes:

Custom Therapy in which you can search for the treatment point and then choose the desired therapeutic effect among the 15 predefined ones.

Protocols in which you can browse the library of pathologies of the selected module and choose the associated protocol, graphically displaying where to perform the treatment using probes not dependent on the operator.

Software Modules

ENF Pro is the ideal device for professionals thanks to the fully configurable software:



Physiotherapy



Sport Physiotherapy



Osteopathy



**Pelvic Floor
Man and Woman**



Dental Care



Podiatry



Physioaesthetics



Aesthetic Massage

ENF Pro Vet

ENF Pro is available with the module dedicated to animal health.



Veterinary



Physiotherapy

LOCAL - Upper Limbs

- Bursitis (ex: Shoulder)
- Edema (ex: Arm)
- Lymphedema (ex: Arm)
- Acute Tendinitis (ex: Elbow)
- Epicondylitis (ex: Elbow)
- Acute Sprain (ex: Wrist)
- Chronic Distortion (ex: Wrist)
- Carpal Tunnel Syndrome (ex: Wrist)
- Dupuytren's Disease
- Algodystrophy (ex: Thumb)
- De Quervain Syndrome
- Snap Finger (ex: Middle Finger)

LOCAL - Lower Limbs

- Edema (ex: Leg)
- Lymphedema (ex: Leg)
- Pubalgia (ex: Right Side)
- Bursitis (ex: Knee)
- Sprain (ex: Ankle)
- Acute Tendonitis (ex: Patellar Tendon)
- Chronic Tendonitis (ex: Patellar Tendon)
- Sudeck's disease (ex: Foot)

LOCAL - Trunk

- Muscle-Tension Pain
- Whiplash
- Cervicobrachialgia due to Hernia
- Cervicobrachialgia due to Muscle-Tensive
- Acute Low Back Pain
- Chronic Low Back Pain
- Lumbosciatalgia due to Hernia
- Lumbosciatalgia due to Muscle-Tensive

GENERAL

- Post-operative Adhesions (ex: Shoulder)
- Arthrosis (ex: Knee)
- Calcification (ex: Shoulder)
- Contracture (ex: Trapezius)
- Contusion (ex: Forearm)
- Hematoma (ex: Posterior Thigh)
- Organized Hematoma (ex: Posterior Thigh)
- Fracture Results (ex: Homer)
- Acute Muscle Strain (ex: Quadriceps)
- Chronic Muscle Strain (ex: Biceps Femoris)
- Post-Surgery Tendon Injury (ex: Patellar Tendon)
- Tendon Injury (ex: Patellar Tendon)

- Dislocation (ex: Shoulder)
- Osteoporotic Syndrome
- Fibromyalgia Syndrome



Sport Physiotherapy

LOCAL - Upper Limbs

- Muscular Relaxing (Upper Limbs)
- Passive Stretching (Upper Limbs)
- Bursitis (ex: Shoulder)
- Capsulitis (ex: Shoulder)
- Partial Injury of Supraspinatus Tendon (ex: Shoulder)
- Luxation (ex: Shoulder)
- Muscular Strengthening (ex: Deltoid)
- Neuromuscular Stimulation (ex: Deltoid)
- Muscular Contracture (ex: Biceps Brachii)
- Muscular Strengthening (ex: Biceps Brachii)
- Neuromuscular Stimulation (ex: Biceps Brachii)
- Muscular Injury (ex: Biceps Brachii)
- Ligamentous Articular Strain (ex: Elbow)
- Bruise (ex: Forearm)
- Hematoma (ex: Forearm)
- Muscular Strain (ex: Forearm)
- Sprain (ex: Wrist)
- Microfracture (ex: Hand)

LOCAL - Lower Limbs

- Muscular Relaxing (Lower Limbs)
- Passive Stretching (Lower Limbs)
- Acute Osteitis Pubis
- Muscular Strengthening (ex: Gluteus)
- Neuromuscular Stimulation (ex: Gluteus)
- Muscular Strengthening (ex: Quadriceps)
- Neuromuscular Stimulation (ex: Quadriceps)
- Muscular Injury (ex: Quadriceps)
- Bruise (ex: Thigh)
- Hematoma (ex: Thigh)
- Muscular Strengthening (ex: Femoral Biceps)
- Neuromuscular Stimulation (ex: Femoral Biceps)
- Bursitis (ex: Knee)
- Ligament Strain (ex: Knee)
- Muscular Contracture (ex: Gastrocnemius)
- Muscular Strengthening (ex: Gastrocnemius)
- Neuromuscular Stimulation (ex: Gastrocnemius)
- Muscular Strain (ex: Gastrocnemius)
- Sprain (ex: Ankle)
- Microfracture (ex: Foot)

LOCAL - Trunk

- Whiplash
- Muscular Strengthening (ex: Pectoral)
- Neuromuscular Stimulation (ex: Pectoral)
- Muscular Injury (ex: Pectoral)
- Muscular Strengthening (ex: Rectus Adbominis)
- Neuromuscular Stimulation (ex: Rectus Adbominis)
- Muscular Strengthening (ex: Transversus Abdominis)
- Neuromuscular Stimulation (ex: Transversus Abdominis)
- Muscular Injury (ex: Great Dorsal)
- Hematoma (ex: Back)
- Bruise (ex: Lumbar)
- Low Back Pain
- Microfracture (ex: Vertebra)

GENERAL

- Passive Stretching (Total)
- Muscular Relaxing (Total)



Osteopathy

STRUCTURAL TECHNIQUES - Combined Treatment

- Neck Pain + TRUST
- Cervicobrachialgie + TRUST
- Torticollis + TRUST
- Bursitis (ex: Shoulder) + TRUST
- Capsulitis + TRUST
- Epicondylitis + TRUST
- Carpal Tunnel + TRUST
- Muscular Contracture (ex: Paravertebrals) + TRUST
- Back Pain + TRUST
- Low Back Pain + TRUST
- Sciatica + TRUST
- Osteitis Pubis + TRUST

STRUCTURAL TECHNIQUES - ENF Treatment

- Post Surgery (ex: Shoulder)
- Rotator Cuff Tear
- Partial Tendon Injury (ex: Supraspinatus)
- Tendonitis (ex: Long Head Biceps)
- Hypotonia (ex: Biceps)
- Hypotrophy (ex: Biceps)
- Edema (ex: Arm)
- Lymphedema (ex: Arm)

- Bruise (ex: Forearm)
- Sprain (ex: Wrist)
- Contracture (ex: Trapezius)
- Acute Disc Herniation (Lumbar)
- Chronic Disc Herniation (Lumbar)
- Muscular Tear (ex: Back-Lumbar)
- Edema (ex: Leg)
- Lymphedema (ex: Leg)
- Contracture (ex: Quadriceps)
- Bruise (ex: Thigh)
- Hematoma (ex: Thigh)
- Hypotonia (ex: Quadriceps)
- Hypotrophy (ex: Quadriceps)
- Muscle Tear (ex: Biceps Femoris)
- Scar (ex: Knee)
- Partial Tendon Injury (ex: Patellar)
- Post Surgery (ex: Knee)
- Tendonitis (ex: Patellar Tendon)
- Sprain (ex: Ankle)
- Plantar Fasciitis
- Hallux Valgus

SKULL SACRAL TECHNIQUES

- Membranous Balance - PHASE 1
- Membranous Balance - PHASE 2

VISCERAL FASCIAL TECHNIQUES

- Neck Pain
- Cervicobrachialgie
- Back Pain
- Low Back Pain
- Chronic Bronchitis
- Asthma

NEUROLYMPHATIC TECHNIQUES

- Upper Limbs Lymphedema
- Lower Limbs Lymphedema
- Joint Effusion (ex: Knee)
- Entrapment Neuropathy (ex: Ulnar Nerve)
- CNerve Compression (ex: Sciatic Nerve)



Pelvic Floor Man and Woman

MAN

- Testicular Pain (Pudendal Neuralgia)
- Male Kidney Stone Disease
- Prostatitis
- Urological Post-Surgery

WOMAN

- Pelvic Pain (Pudendal Neuralgia)
- Female Kidney Stone Disease
- Postpartum Uterine Hypotonia
- Gynecology Post-Surgery



Dental Care

DENTISTRY

- Post-Surgery Edema
- TMJ Instability (Not Postural)
- Reversible Lesion Nervous Termination
- Trigeminal Neuralgia
- Osseointegration
- Periodontitis
- Pericoronitis
- Bone Resorption

FACE AESTHETICS

- Anti-Age
- Anti-Wrinkle
- Lifting
- Lymphatic Drainage



Podiatry

GENERAL

- Foot Arthrosis
- Foot Rheumatoid Arthritis
- Bursitis Bunion
- Bursitis Fifth Varus Finger
- Retrocalcaneal Bursitis
- Ankle Sprain
- Enthesopathy
- Plantar Fasciitis
- Metatarsalgia
- Morton's Neuroma
- Diabetic Foot
- Post Surgery - Bunion
- Post Surgery - Baseball Finger
- Post Surgery - Morton's Neuroma
- Post Surgery - Flat Foot
- Post Surgery - Hollow Foot

- Post Surgery - Achilles Tendon Rupture
- Post Surgery - Tarsal Tunnel
- Heel Spur
- Achilles Tendon - Calcification
- Achilles Tendon - Partial Injury
- Achilles Tendon - Tendonitis



Physioaesthetics

LOCAL - Face

- Face - Anti-Wrinkle
- Face - Moisturizer
- Face - Lifting
- Face - Eye Contour

LOCAL - Upper Body

- Upper Limbs - Lymphatic Drainage

LOCAL - Lower Body

- Lower Limbs - P.E.F.S. First Phase
- Lower Limbs - P.E.F.S. Second Phase
- Lower Limbs - Lymphatic Drainage
- Buttocks - Toning

GENERAL

- Postural Relaxation
- Total Body Relaxation



Aesthetic Massage

LOCAL - Face

- Face Myorelaxant Massage
- Neck Myorelaxant Massage

LOCAL - Upper Body

- Upper Limbs Lymphatic Drainage Massage
- Back Myorelaxant Massage
- Slimming Massage

LOCAL - Lower Body

- Lower Limbs Lymphatic Drainage Massage
- P.E.F.S. First Phase Massage
- P.E.F.S. Second Phase Massage

GENERAL

- Full Body Relaxing Massage



Veterinary

DOG

- Muscular Contracture
- Arthritis Pain
- Hematoma
- Organized Hematoma
- Fracture
- Post Surgery Inflammation
- Post Traumatic Skin Injury
- Post Traumatic Ligament Injury
- Tendinitis

CAT

- Muscular Contracture
- Arthritis Pain
- Hematoma
- Organized Hematoma
- Fracture
- Post Surgery Inflammation
- Post Traumatic Skin Injury
- Post Traumatic Ligament Injury
- Tendinitis

HORSE

- Muscular Contracture
- Arthritis Pain
- Hematoma
- Organized Hematoma
- Post Surgery Inflammation
- Post Traumatic Skin Injury
- Post Traumatic Ligament Injury
- Tendinitis



ENF Physio

Portable and ideal for Physiotherapy

ENF Physio is the professional Medical Device designed for all diseases in Physiotherapy.

15 Treatments

Acute Pain, Acute and Chronic Anti-inflammatory, Superficial, Deep and Lymphatic Drainage, Tissue Regeneration, Muscle Tone and Trophism, Decontracting, Anti-spasticity, P.S. Adhesions.



ENF Sport

Portable and ideal for Sports Rehabilitation

ENF Sport is the professional Medical Device designed to treat Sports diseases.

10 Treatments

Acute Pain, Acute and Chronic Anti-inflammatory, Drainage, Regeneration, Muscle Tone and Trophism, Decontracting, P.S. Adhesions.



ENF X

Portable and ideal for rental to patients

ENF X is the simple and effective professional Medical Device for rental to patients.

5 Treatments

Chronic Anti-inflammatory, Superficial Drainage, Osteo-tendinous Regeneration, Decontracting, P. S. Adhesions.



ENF

STUDIO BEAUTY



Dynamic balance between appearing and being

Through dynamic rebalancing and relaxation of the body, ENF Studio Beauty creates the favorable condition to improve the result of the face and body treatment. The effects on the skin are immediate.

The **3D Protocols** of ENF Studio Beauty are designed to simplify execution by graphically showing on the 3D body where to perform the chosen treatment and offering a pre-set sequence of effects.

Software Modules

ENF Studio Beauty is the ideal beauty and wellness device thanks to the fully configurable software:



Face and Body Aesthetics



Dermatofunctional Aesthetics



Holistic Protocols

Anatomy and Maps **3D**

ENF Studio Beauty hosts the 3D female anatomy made up of 8000 elements organized into 17 levels and maps for the treatment of the face and body.



Face and Body Aesthetics

LOCAL - Face

- Face - Anti-Wrinkle
- Face - Moisturizer
- Face - Lifting
- Face - Eye Contour
- Face - Nourishing
- Face - Rebalancing

LOCAL - Upper Body

- Upper Limbs - Lymphatic Drainage
- Décolleté - Moisturizer
- Décolleté - Toning
- Breast - Toning
- Abdomen - Modeling

LOCAL - Lower Body

- Lower Limbs - Anti Cellulite Grade 1/2
- Lower Limbs - Anti Cellulite Grade 3/4
- Lower Limbs - Lymphatic Drainage
- Buttock - Toning
- Inner Thigh - Toning

GENERAL

- Postural Relaxation
- Total Body Relaxation



Dermatofunctional Aesthetics

GENERAL

- Immature Scar
- Atrophic Scar
- Hypertrophic Scar
- Keloid
- First Degree Burn



Holistic Protocols

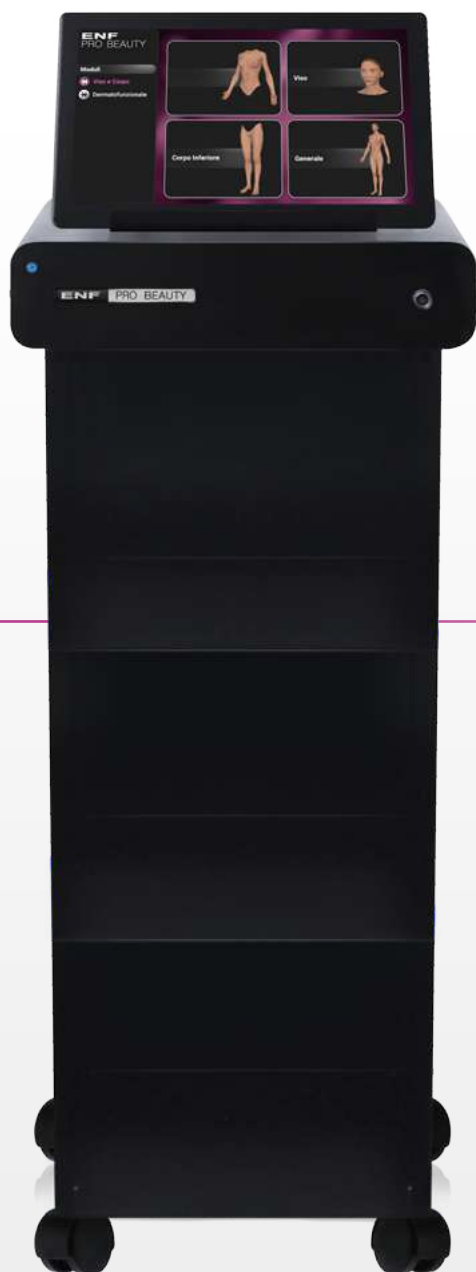
QI GONG MASSAGE

- Temples and Forehead
- Eye Contour and Ears
- Lip Contour and Cheeks
- Head and Neck
- Décolleté
- Arms and Hands
- Belly and Inner Thigh
- Buttocks and Legs

ENERGY POINTS TREATMENT

- Temples and Forehead
- Eye Contour and Ears
- Lip Contour and Cheeks
- Head and Neck
- Décolleté
- Arms and Hands
- Belly and Inner Thigh
- Buttocks and Legs

ENF PRO BEAUTY



Advanced face and body aesthetics

ENF Pro Beauty is the ideal device for the esthetician who wants to improve both the skin condition and the subcutaneous tissues, promoting the client's general well-being.

The **Protocols** of ENF Pro Beauty are designed to simplify the execution of the aesthetic treatment by graphically showing where to perform the chosen treatment and offering a pre-set sequence of effects.

Software Modules

ENF Pro Beauty is the ideal device for the beauty center specialized in the treatment of the signs of aging on the face and localized fat deposits on the body.



Face and Body Aesthetics



Aesthetic Massage





Face and Body Aesthetics

LOCAL - Face

- Face - Anti-Wrinkle
- Face - Moisturizer
- Face - Lifting
- Face - Eye Contour
- Face - Nourishing
- Face - Rebalancing

LOCAL - Upper Body

- Upper Limbs - Lymphatic Drainage
- Décolleté - Moisturizer
- Décolleté - Toning
- Breast - Toning
- Abdomen - Modeling

LOCAL - Lower Body

- Lower Limbs - Anti Cellulite Grade 1/2
- Lower Limbs - Anti Cellulite Grade 3/4
- Lower Limbs - Lymphatic Drainage
- Buttock - Toning
- Inner Thigh - Toning

GENERAL

- Postural Relaxation
- Total Body Relaxation



Aesthetic Massage

LOCAL - Face

- Face Myorelaxant Massage
- Neck Myorelaxant Massage

LOCAL - Upper Body

- Upper Limbs Lymphatic Drainage Massage
- Back Myorelaxant Massage
- Slimming Massage

LOCAL - Lower Body

- Lower Limbs Lymphatic Drainage Massage
- P.E.F.S. First Phase Massage
- P.E.F.S. Second Phase Massage

GENERAL

- Full Body Relaxing Massage

ENF Accessories

Probe
2 Sphere Maxi
Suitable for body delicate treatments.



Probe
2 Sphere Mini
Suitable for face delicate treatments.



Probe
Mini
Suitable for any use.



Probe
2 Maxi
Suitable for joints treatment. Automatic use.



Probe
2 Magic Hand
Suitable to put together manual massage with ENF therapy. Glove worn by the operator.



Probe
Total Body
Suitable for systemic diseases and for the reinforced of the osteopathic therapy. Automatic use.



Probe
4 Gel
Suitable for any use. Automatic use.

Probe
2 Gel
Suitable for any use. Automatic use.





SUHARD BIOMEDICAL

FLORIN SANGEORZAN

Mobil: +40 755 020 259

office@suhard-biomedical.ro