

# MOREHOUSE SCHOOL OF RELIGION



## PROJECT OVERVIEW

The Morehouse Project is an adaptive reuse intervention that transforms a pre-existing structure into a multi-use residential complex, carefully balancing cost constraints with architectural intention. Retaining much of the original framework, the design strategy focused on elevating everyday functionality through spatial clarity and subtle but deliberate material and formal decisions.

# MN+A

MORSHOUSE  
SCHOOL

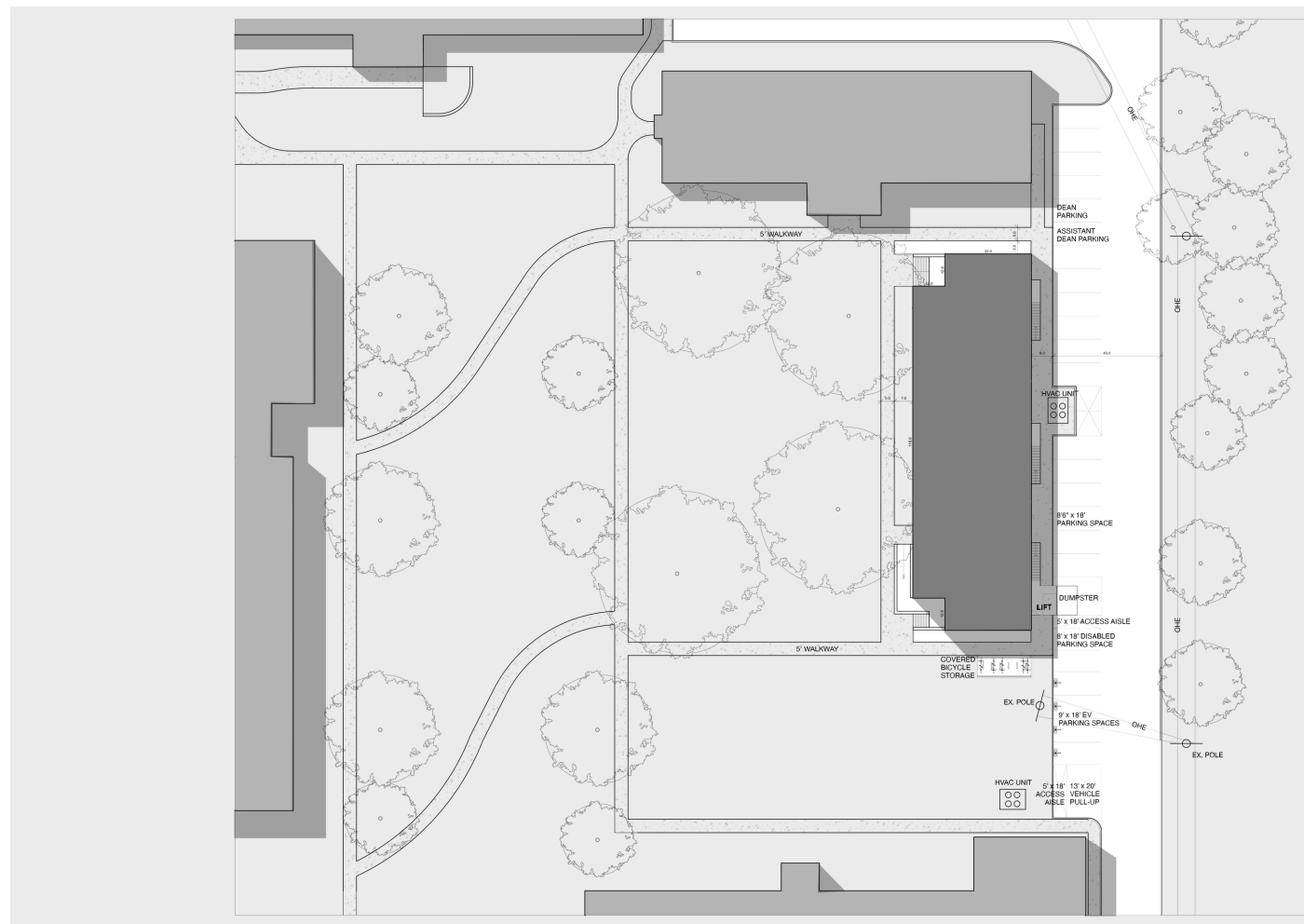
## SITE AND CIRCULATION



Situated adjacent to university buildings, the project's site plan introduces logistical upgrades such as reconfigured parking with EV charging, designated drop-off areas, and a covered bicycle storage unit, enhancing mobility and sustainability across the site.

### SOLID-VOID DRAWING

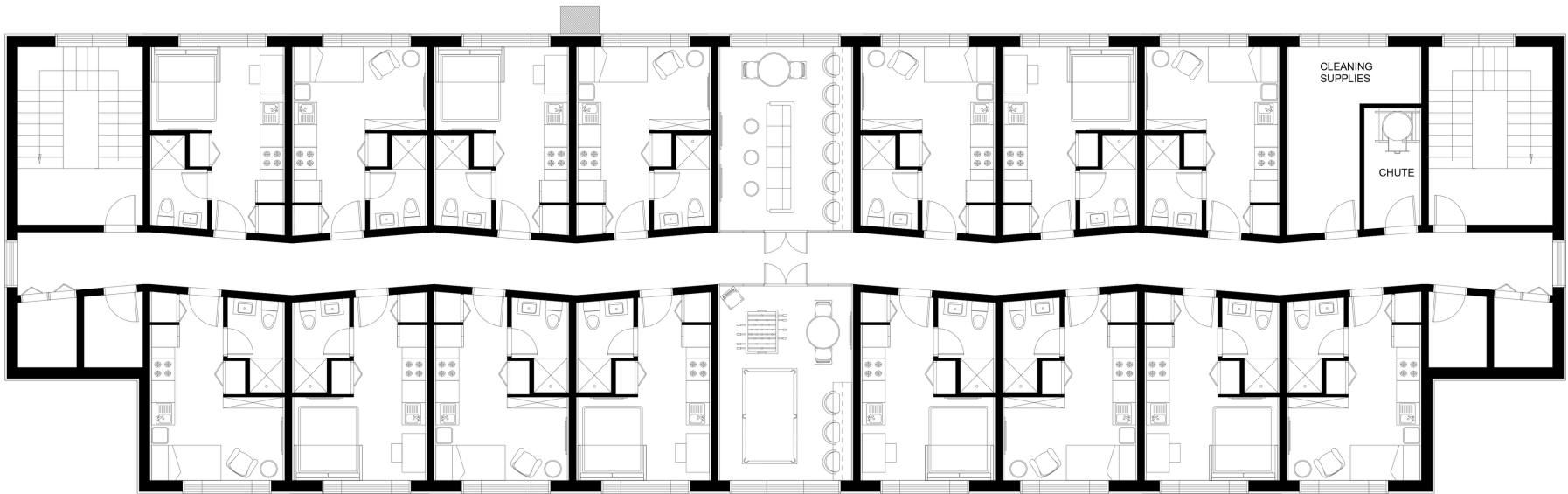
This solid-void drawing examines the building types and their distribution, offering insights into the surrounding context and architectural typologies.



### EXISTING SITE PLAN

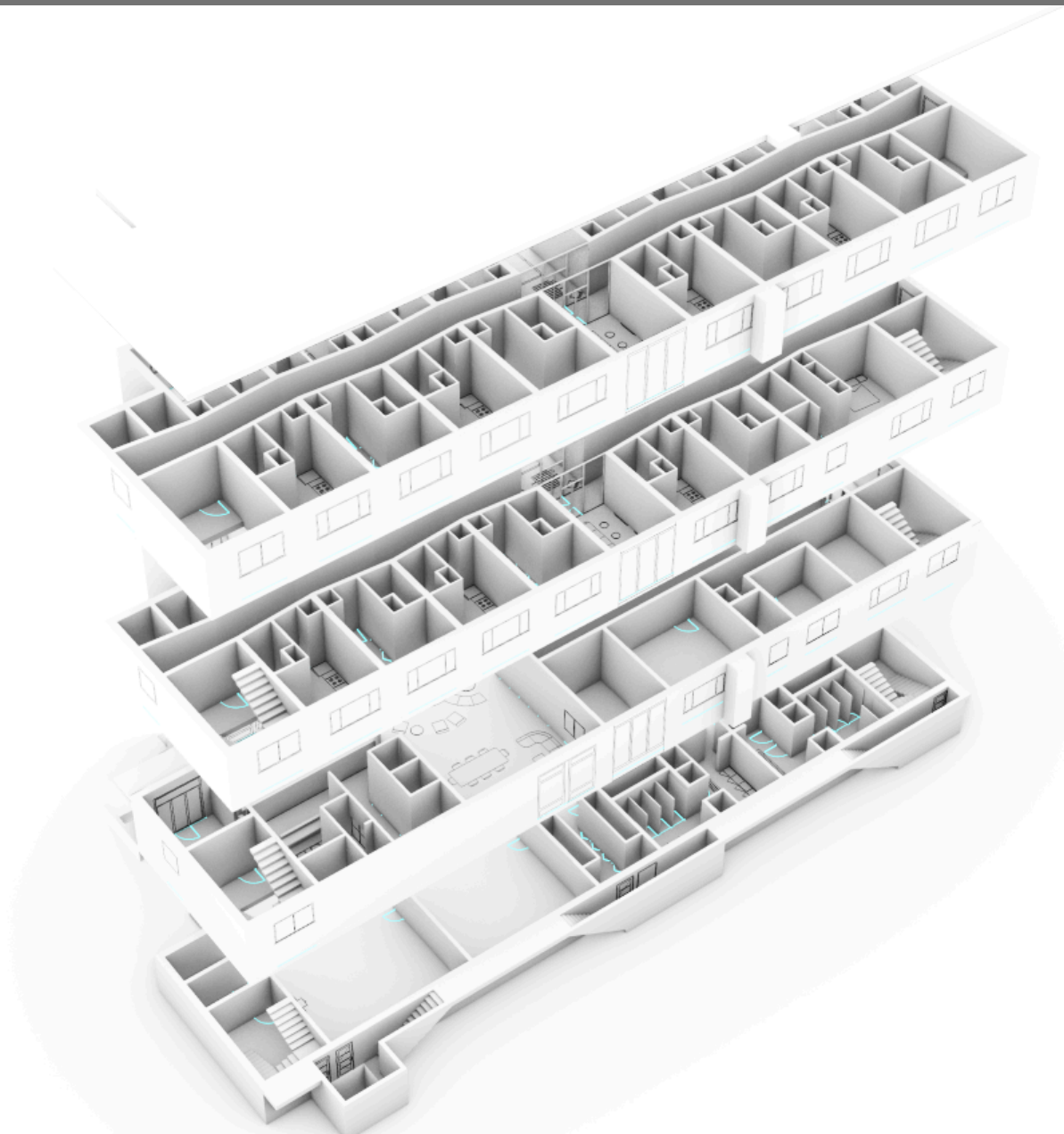
The site plan below illustrates the project building in relation to the surrounding university structures, highlighting the exterior landscape connections between them.

## UPPER FLOOR STRATEGY

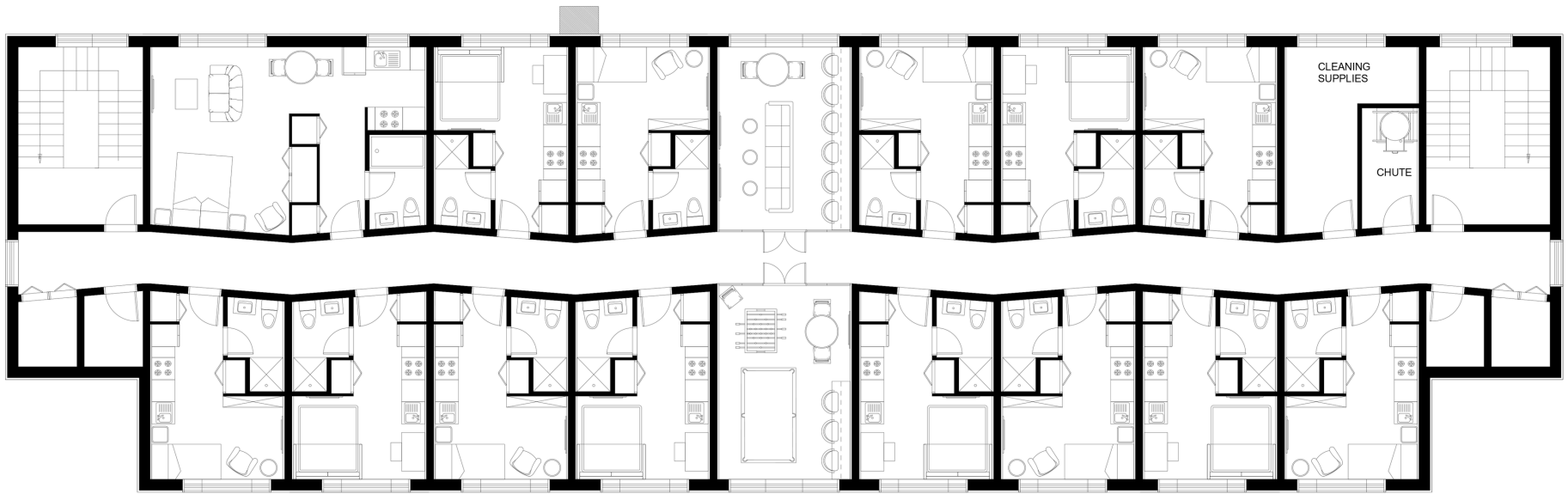


On the top two floors, a new typology of shared living is established. Eight compact residential units flank central communal areas, each demarcated by glazed partitions that offer visual continuity and acoustic buffering. One lounge is furnished with bar seating, couches, and televisions; the other hosts gaming amenities like a pool and foosball table. These shared zones foster a horizontal community model, encouraging interaction while maintaining personal boundaries.

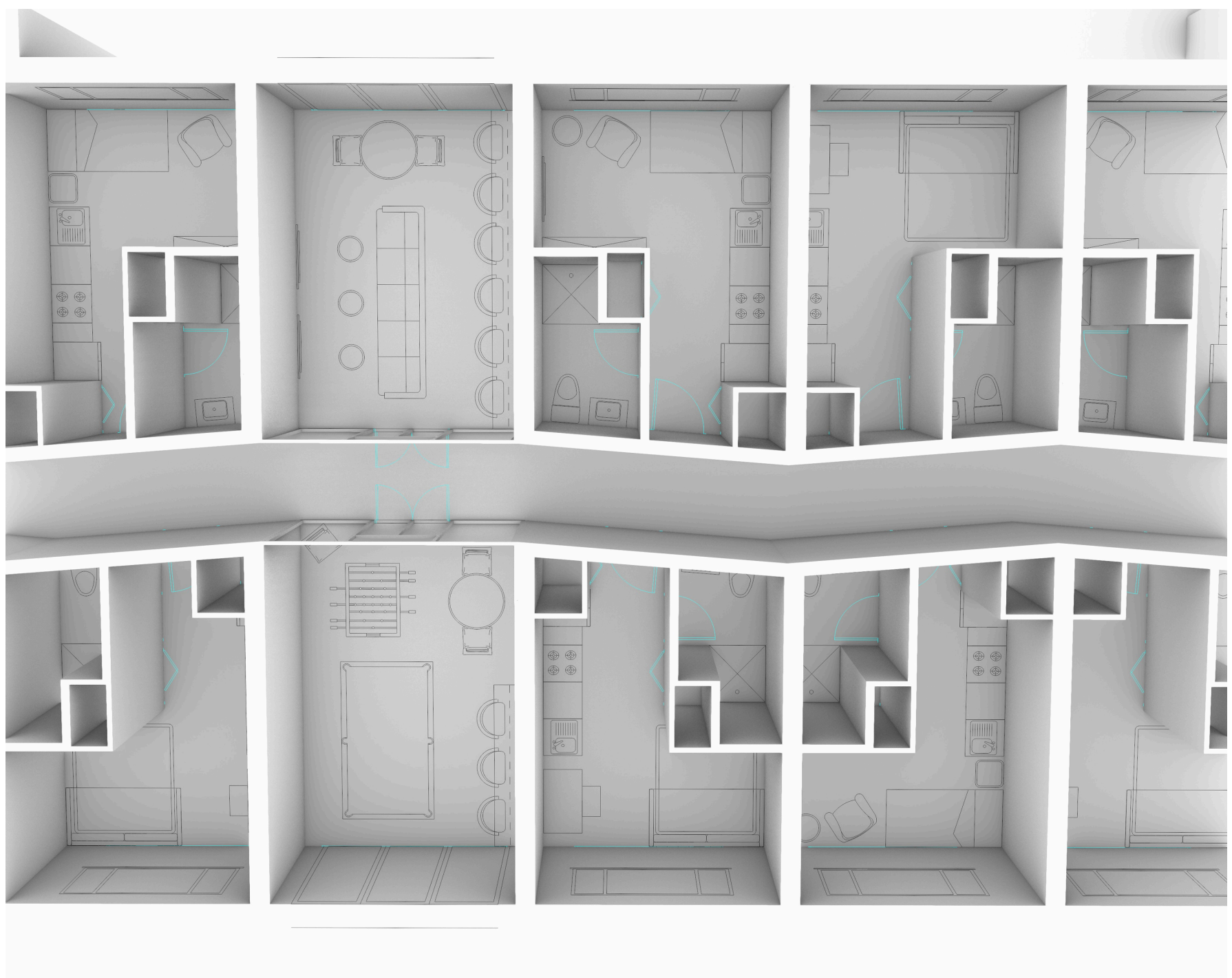
A key spatial intervention is the revitalized hallway. Previously anonymous and flat, it now features a rhythm of angled partitions. This design introduces both motion and privacy, reducing direct sightlines between opposing units and providing alcoves where residents can personalize their space, offering both spatial dignity and communal identity.



## UNIT DESIGN

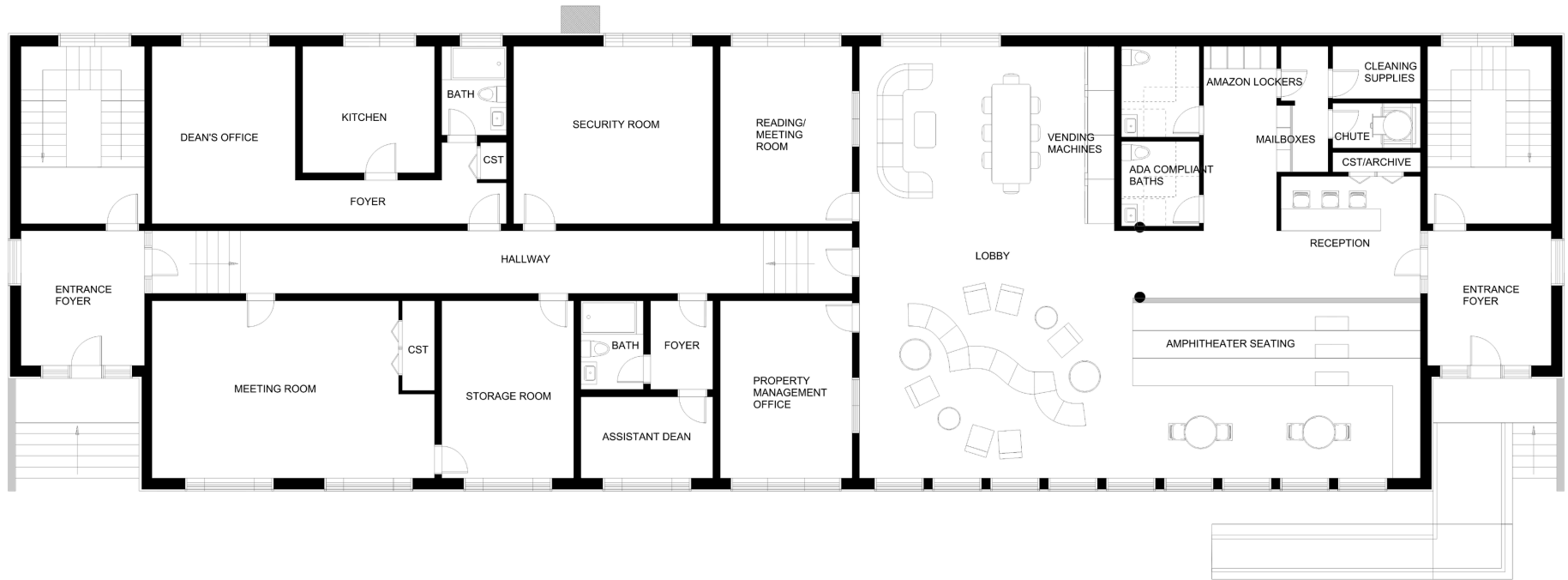


Each residential unit is compact, with integrated kitchenettes (24" appliances and optimized storage) and two flexible layouts. One includes a full bed and lounge chair; the other swaps the bed for a sofa-bed and small dining or worktable. This variation allows for personalization while preserving a uniform spatial footprint.

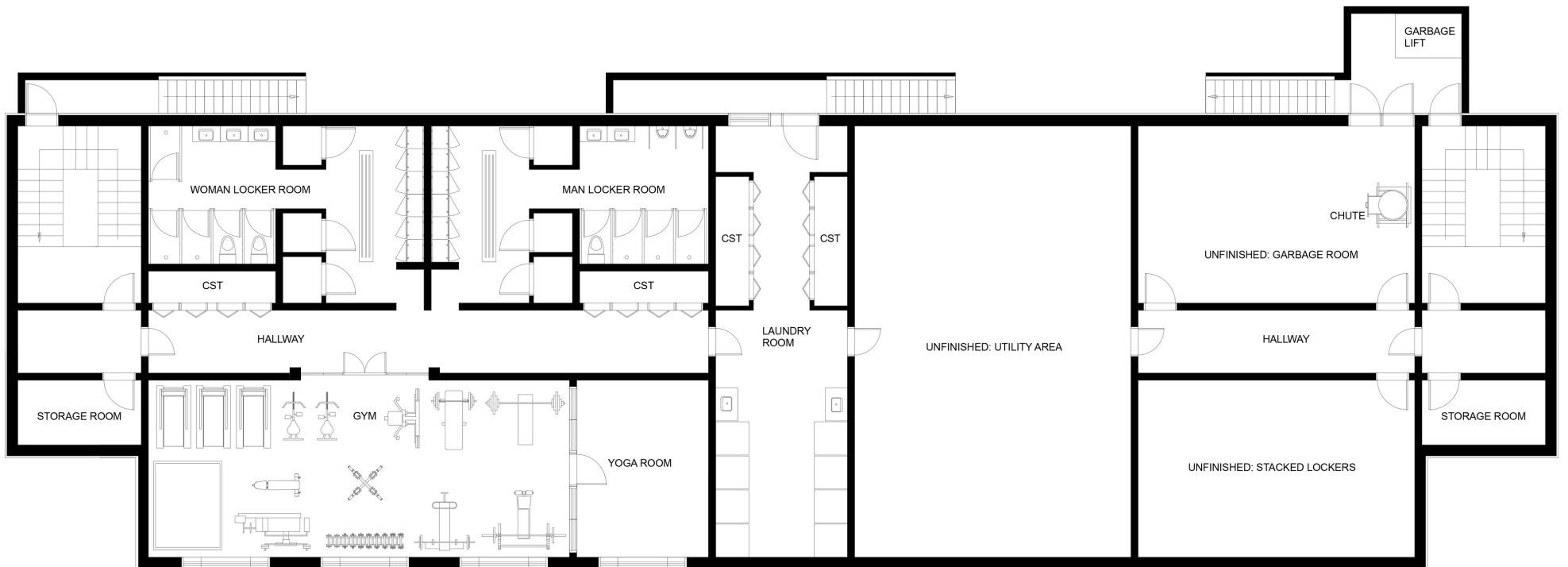


## GROUND FLOOR PROGRAMMING

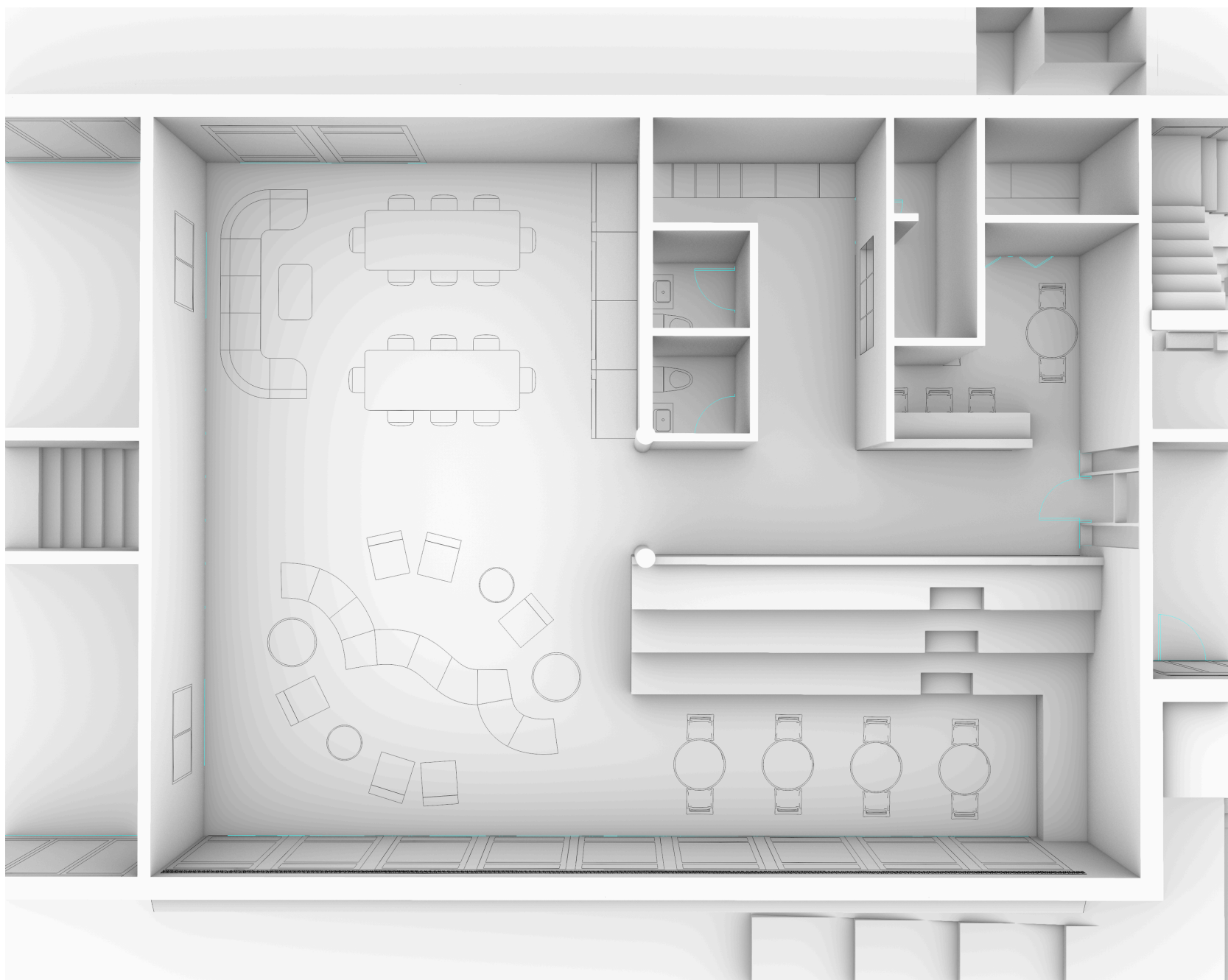
Each residential unit is compact, with integrated kitchenettes (24" appliances and optimized storage) and two flexible layouts. One includes a full bed and lounge chair; the other swaps the bed for a sofa-bed and small dining or worktable. This variation allows for personalization while preserving a uniform spatial footprint.



## BASEMENT AMENITIES



Programmed for wellness and utility, the basement includes a full gym, yoga studio, locker rooms, showers, and an industrial-grade laundry facility. A rear lift and central waste chute system streamline service access and vertical circulation for maintenance functions.



## FACADE STRATEGY

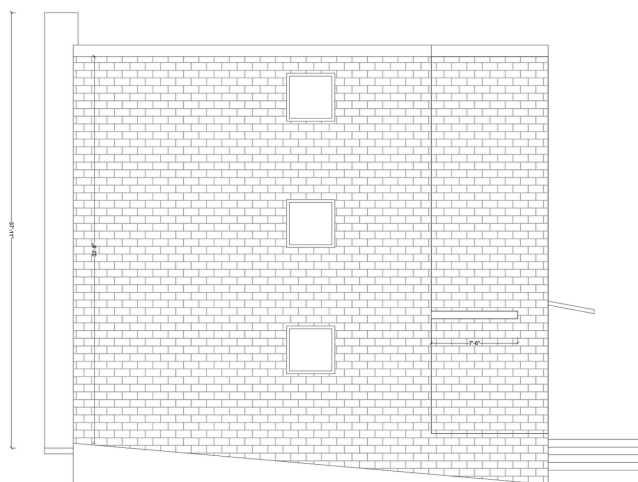
The exterior was updated with vertical bands of floor-to-ceiling glazing that punctuate the front and rear elevations. These glazed openings illuminate the most public internal spaces: common lounges, meeting rooms, and administrative offices, adding transparency and visual rhythm to an otherwise restrained envelope.



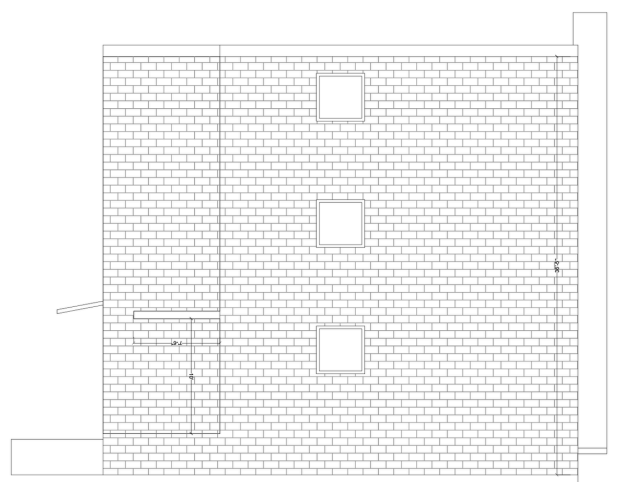
FRONT ELEVATION



REAR ELEVATION



LEFT ELEVATION




RIGHT ELEVATION

# LANDSCAPING



## CONCLUSION

An architectural rendering of a courtyard space. In the foreground, there is a large, octagonal wooden deck with a central circular area. To the left, there are raised garden beds with various plants. In the background, a brick building with a red roof is visible. The sky is blue with some clouds and a bright sun. Several white human figures are scattered throughout the scene to provide scale and context.

The Morehouse Project is a case study in value-driven transformation. With minimal demolition and strategic enhancements, it repositions an underutilized structure into a vibrant residential model. Through redefined shared spaces, efficient unit planning, and understated but effective spatial gestures, the project fosters community, privacy, and livability in balance.