

ARCHITEX



CAPABILITY STATEMENT

2024

CONTENTS

Section	Chapter	Page
01	+ INTRODUCTION	03
02	+ MEET THE TEAM	06
03	+ PROJECT SHOWCASE	10
04	+ THE MIJASU FAMILY	23

01 + INTRODUCTION

+ We are architects, drafters and documenters with over 45 years of experience in large scale multi-residential, retail, industrial and commercial projects.

+ **Using the latest in BIM technology, our work is respected for its precision in coordinating all consultants and disciplines to deliver documentation focused on constructibility.**



Handwritten notes on a yellow sticky note, including the words "THINKING", "DESIGN", "CONCEPT", "IDEAS", "AND", "SOLUTIONS".

Handwritten notes on a yellow sticky note, including the words "THINKING", "DESIGN", "CONCEPT", "IDEAS", "AND", "SOLUTIONS".

02 + MEET THE TEAM

+ Our leadership represents over 100+ years of built environment excellence.





+ VICTOR ALCAMI

DIRECTOR

NSW Nominated Architects: Reg 9785
NSW Design Practitioner Registration:
DEP0002300

Victor, an award-winning architect from Barcelona, leads Architex with a strong global perspective and a passion for design. Inspired by Gaudi's legacy, he merges modernist principles with practical functionality.

With over a decade at award-winning Sydney studios, Victor emphasizes meticulous detail, balancing design intent with construction realities while prioritizing efficiency and collaboration amidst evolving regulations.



+ CLAYTON EDWARDS

DIRECTOR

ARBV Reg: 5205
NSW Nominated Architect: Reg 11632

Clayton has over 12 years of architectural and interior design experience, including award-winning residential, heritage, and commercial projects.

As a Director of Architex, he oversees design direction and quality assurance throughout the design process. Agile and collaborative, Clayton ensures that informed and thoughtful design solutions are created and developed.



+ PETER DEL PIZZO

STUDIO DIRECTOR

Peter brings over 25 years of residential, commercial and industrial design experience with expertise across planning proposals, BIM collaborations, heritage work and project management.

As Studio Director, Peter embraces complex challenges that encourage collaborative and innovative thinking.

He believes in working closely with clients and other stakeholders to deliver the best potential solutions for every project and space.



+ ROBERT DEL PIZZO

ADVISOR

NSW Nominated Architects: Reg 3972
NSW Design Practitioner Registration:
DEP0001254

Robert, a seasoned architect with over 47 years of experience, leads with a focus on blending creative design and constructability.

As Principal Architect and founder of Architex, he values collaboration, respects client needs, and upholds high industry standards to ensure optimal project outcomes while fostering an environment for exceptional team performance.



+ ROSELY RINCON

SENIOR DESIGN LEAD

Joining the Architex team from DesignInc in September 2024, Rosely's addition to our Senior Team reflects our commitment to increasing the depth of experienced talent to continually drive successful, quality outcomes for our clients.

With over 15 years of experience, including 9 years in local projects, Rosely specialises in architectural documentation and project coordination for large scale projects across multiple sectors and typologies through all stages including construction. She has extensive experience with working collaboratively with Tier 1 contractors.



+ JAMES DACEY

SENIOR DRAFTSMAN

James is a forward-thinking Draftsman with a comprehensive background in architectural documentation and software advancements.

With a focus on managing and documenting high-rise developments, plus his proficiency in emerging industry technologies, James brings continuous improvement for sustained motivation to every project.



+ DENNIS WIMMER

SENIOR ARCHITECT / MANAGER

Dennis is a dedicated and detail-oriented architect with over 38 years of experience in projects ranging from adds and alts, and bespoke houses to medium-density housing and childcare facilities.

He champions collaboration, leveraging the strengths of each team member to enhance project outcomes.



+ DENNIS BUSLIJETA

SENIOR DRAFTSMAN

Dennis is a highly experienced Draftsman with over 27 years at Architex. He leads the charge in developing new requirements and procedures for projects, as well as improving documentation presentation.

His proficiency in Revit and AutoCAD, along with his hands-on approach with external stakeholders, ensures timely and thorough project completion.

03 + PROJECT SHOWCASE

+ LAROOL CRESCENT MULTI-RESIDENTIAL



LOCATION: Castle Hill, NSW

CLIENT: CDPM

STATUS: Current

DETAILS:

+ 111 Luxury Apartments

+ 4 Buildings

+ 6 Townhouses

+ 21 Skyhomes

+ PALM MULTI-RESIDENTIAL



LOCATION: Cronulla, NSW
CLIENT: Sammut Group
STATUS: Current

DETAILS:
+ 9 Levels
+ 21 Apartments

+ WARRIEWOOD ROAD MULTI-RESIDENTIAL



LOCATION: Warriewood, NSW
CLIENT: Private Developer
STATUS: Current

DETAILS:
+ 3 Levels
+ 34 Apartments
+ 11 Townhouses



+ LAKESIDE PARADE MULTI-RESIDENTIAL



LOCATION: Jordan Springs, NSW
CLIENT: Coplex
STATUS: Under Construction

DETAILS:
+ 5 Levels
+ 80 Apartments



+ AYL A STREET MULTI-RESIDENTIAL



LOCATION: Tallawong, NSW
CLIENT: Kanebridge
STATUS: Current

DETAILS:
+ 6 Levels
+ 50 Apartments



+ PRINCESS HIGHWAY MULTI-RESIDENTIAL



LOCATION: Rockdale, NSW
CLIENT: Coplex
STATUS: Under Construction

DETAILS:
+ 8 Levels
+ 58 Apartments

+ HUNTER + O'CONNEL STREET

MIXED USE DEVELOPMENT

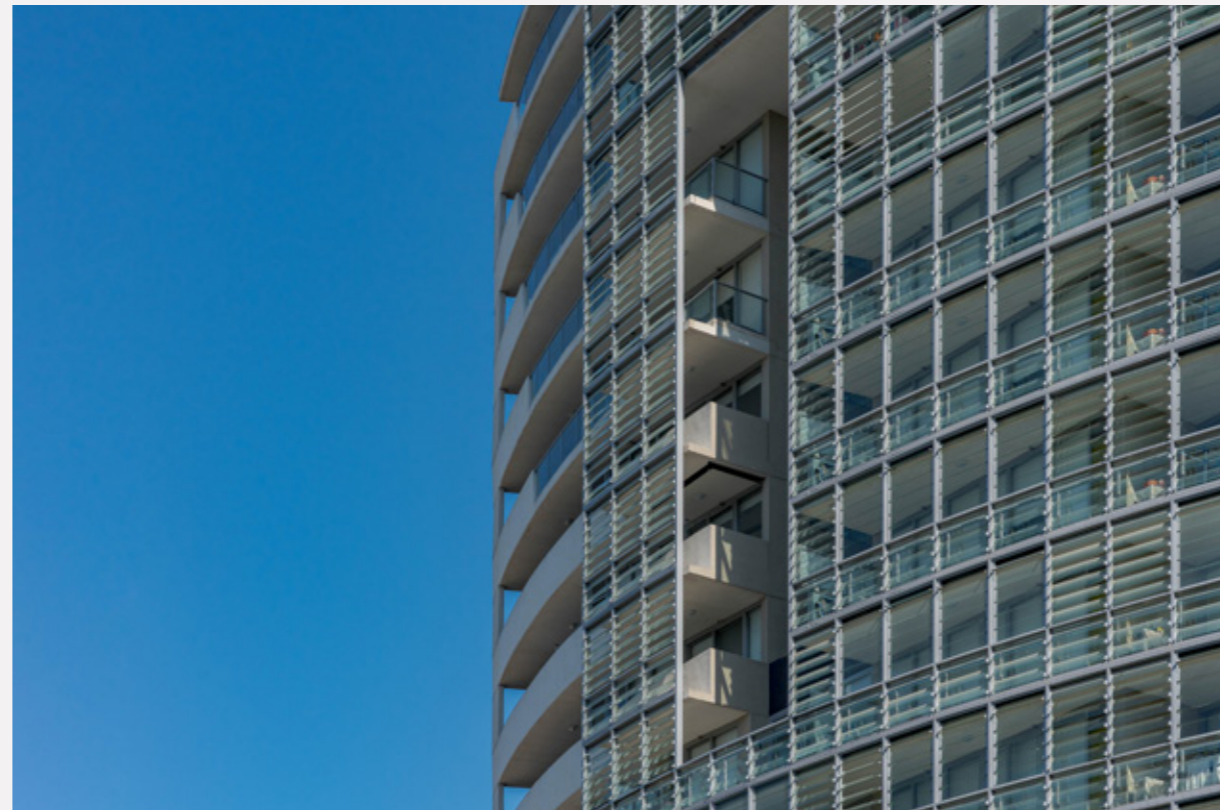
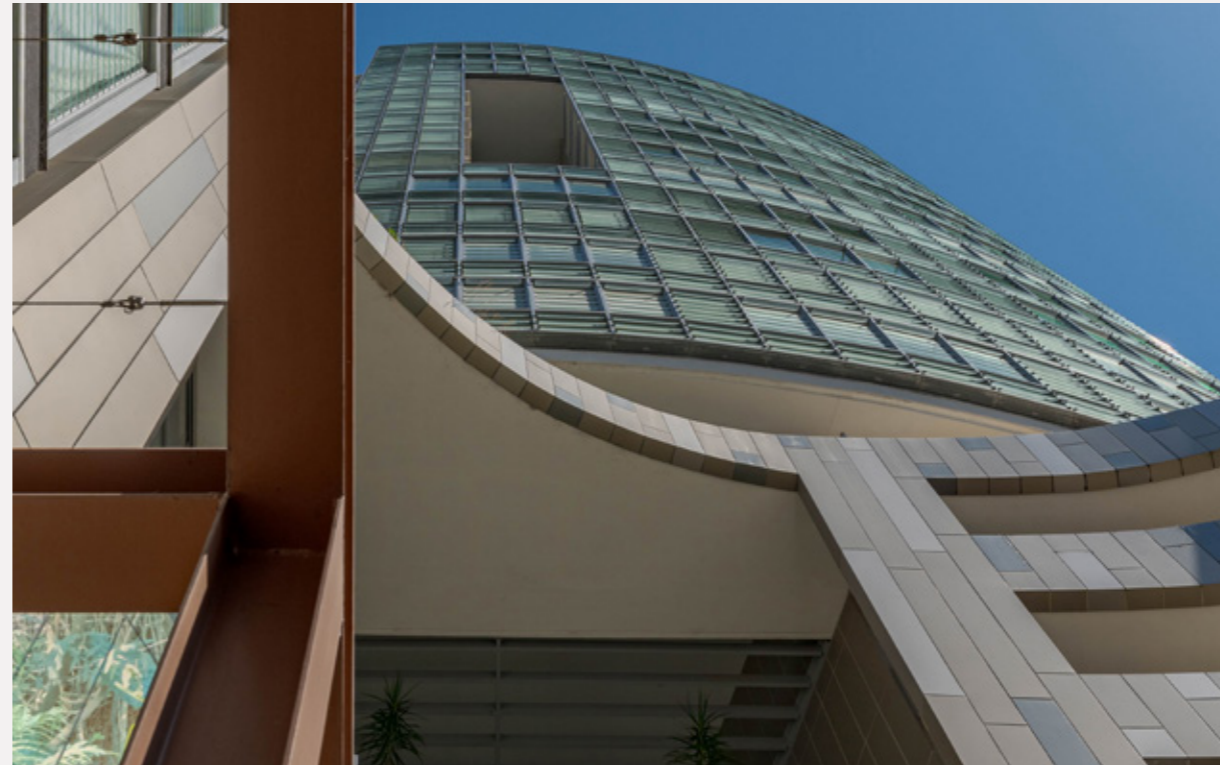


LOCATION: Parramatta, NSW
CLIENT: Private Developer
STATUS: Complete

DETAILS:
+ 20 Level Tower
+ 108 Apartments
+ Incl Retail and Commerical

+ WIGRAM + HASSEL STREET

MIXED USE DEVELOPMENT



LOCATION: Parramatta, NSW
CLIENT: Maroun Constructions
STATUS: Complete

DETAILS:
+ 17 Levels
+ 156 Apartments
+ 5 Commerical / Tenancies

+ VAUGHAN STREET MULTI-RESIDENTIAL



LOCATION: Blakehurst, NSW
CLIENT: Princeton
STATUS: Under Construction

DETAILS:
+ 4 Levels
+ 32 Apartments



+ ZOE PLACE MULTI-RESIDENTIAL



LOCATION: Mount Druitt, NSW
CLIENT: GLP Developments
STATUS: Under Construction

DETAILS:
+ 3 Buildings
+ 12 Levels
+ 358 Apartments



+ CHURCH STREET

MULTI-RESIDENTIAL / MIXED USE



LOCATION: Parramatta, NSW
CLIENT: Holdmark Developments
STATUS: Complete

DETAILS:
+ 12 Levels
+ 98 Apartments
+ Ground Plane Retail

+ FACTORY STREET

COMMERICAL INDUSTRIAL



LOCATION: Granville, NSW
CLIENT: Knorr-Bremse Group

DETAILS:
+ 12,500 Sqm
+ Purpose Built office and warehouse complex



+ EAST STREET

MULTI-RESIDENTIAL / MIXED USE



LOCATION: Granville, NSW
CLIENT: Private Developer
STATUS: Complete

DETAILS:
+ 3 Towers
+ 8 Levels
+ 486 Apartments

+ WAYMAN PLACE RESIDENTIAL



LOCATION: Merrylands, NSW
CLIENT: Coplex

DETAILS:
+ 8 Levels
+ 62 Apartments

+ SWEET STREET

CHILDCARE CENTRE



LOCATION: Rouse Hill, NSW
CLIENT: Private Developer
STATUS: Development
Application

+ WINDSOR ROAD

MULTI-RESIDENTIAL / MIXED USE



LOCATION: Rouse Hill, NSW
CLIENT: Mintus Group
STATUS: Complete

DETAILS:
+ 4 Levels
+ 48 Apartments
+ Retail and Childcare



+ MARLBOROUGH ROAD MULTI-RESIDENTIAL



LOCATION: Homebush, NSW
CLIENT: Skyton Developments
STATUS: Under Construction

DETAILS:
+ 5 Levels
+ 48 Apartments



+ WITHERS ROAD INDUSTRIAL



LOCATION: Rouse Hill, NSW
CLIENT: Private Developer
STATUS: Under Construction

DETAILS:
+ 4 Levels
+ 10 Industrial Lots

+ ANNANGROVE ROAD COMMERCIAL / INDUSTRIAL



LOCATION: Rouse Hill, NSW
CLIENT: Regal Corp
STATUS: Development Application

DETAILS:
+ 9,899m²
+ 35 Industrial Lots
+ 28 Commercial Suites



We're a proud member of

MIJASU

People led places, spaces and experiences

WORKING WITH US
GIVES YOU ACCESS
TO THE FULL FAMILY.
A BIGGER TEAM MEANS
WE ALWAYS DREAM
BIGGER; TOGETHER.



Best

PLACEMAKING + WAYFINDING

We are placemakers, wayfinders, experience designers and signage experts enhancing the livability of communities.

Our work is built from contextual and purposeful human insights, rich in environmental sensibility and based upon real-life experiences.

[CLICK TO VISIT WEBSITE](#)



ARCHITEX

ARCHITECTURAL DOCUMENTATION

We are architects, drafters and documenters with over 45 years of experience in large scale multi-residential, retail, industrial and commercial projects.

Using the latest in aBIM technology, our work is respected for its precision in coordinating all consultants and disciplines to deliver documentation focused on constructability.

Registered Design Practitioner for Class 2 Building

[CLICK TO VISIT WEBSITE](#)



CLEY

STUDIO

ARCHITECTURE + INTERIORS

We are architects, makers and dreamers inspired by so much more than just bricks and mortar.

Exploring form, place, materiality, light and sustainability, we work to craft spaces that ignite an emotional connection.

[CLICK TO VISIT WEBSITE](#)





WE BRING RESPECT
TO EVERYONE WE TALK
TO AND WE COMMIT
TO OUR ESTABLISHED
VALUES IN EVERYTHING
WE DO AND SAY.

PEOPLE-LED DESIGN

People are at the centre of everything we do. We connect with our communities by directly engaging with their needs, wants and reactions. While our services are diverse, their intent is universal: to create highly-connected places, spaces and experiences that contribute to productivity, health and happiness.

CHALLENGE US

We welcome challenges and challengers throughout every part of the process. Whether it's a risk, obstacle or opportunity, we thrive on troubleshooting projects—especially where opportunities exist in sustainability and technology. By aiming beyond the horizon, we're able to make our communities more engaging, inclusive and diverse.

EFFECTIVE COLLABORATION

The old one-size-fits-all approach doesn't apply to our clients. And with our family of businesses, we're able to offer an interdisciplinary response to any project. We lean on each other and are transparent with our work so that no opportunity is left unexplored, and the best outcomes are achieved.

PURPOSEFUL PROGRESSION

We seize every opportunity to celebrate and learn from our unique differences. By actively championing gender, ethnic and cultural diversity across our collective everyday, our work becomes truly progressive. From the local bar to the boardroom, every person has a seat at our table.

ARCHITEX



MELBOURNE +61 3 7003 5279
SYDNEY +61 2 9633 5888

MELBOURNE 435 SWAN STREET,
RICHMOND VIC 3121

SYDNEY LEVEL 4, 17-19 ALBERTA
STREET, NSW 2000

WWW.ARCHITEX.COM.AU