

SIERRA





BRDG⁺

A home can be another address,
or it can be another rhythm.
SIERRA is shaped for the second kind.

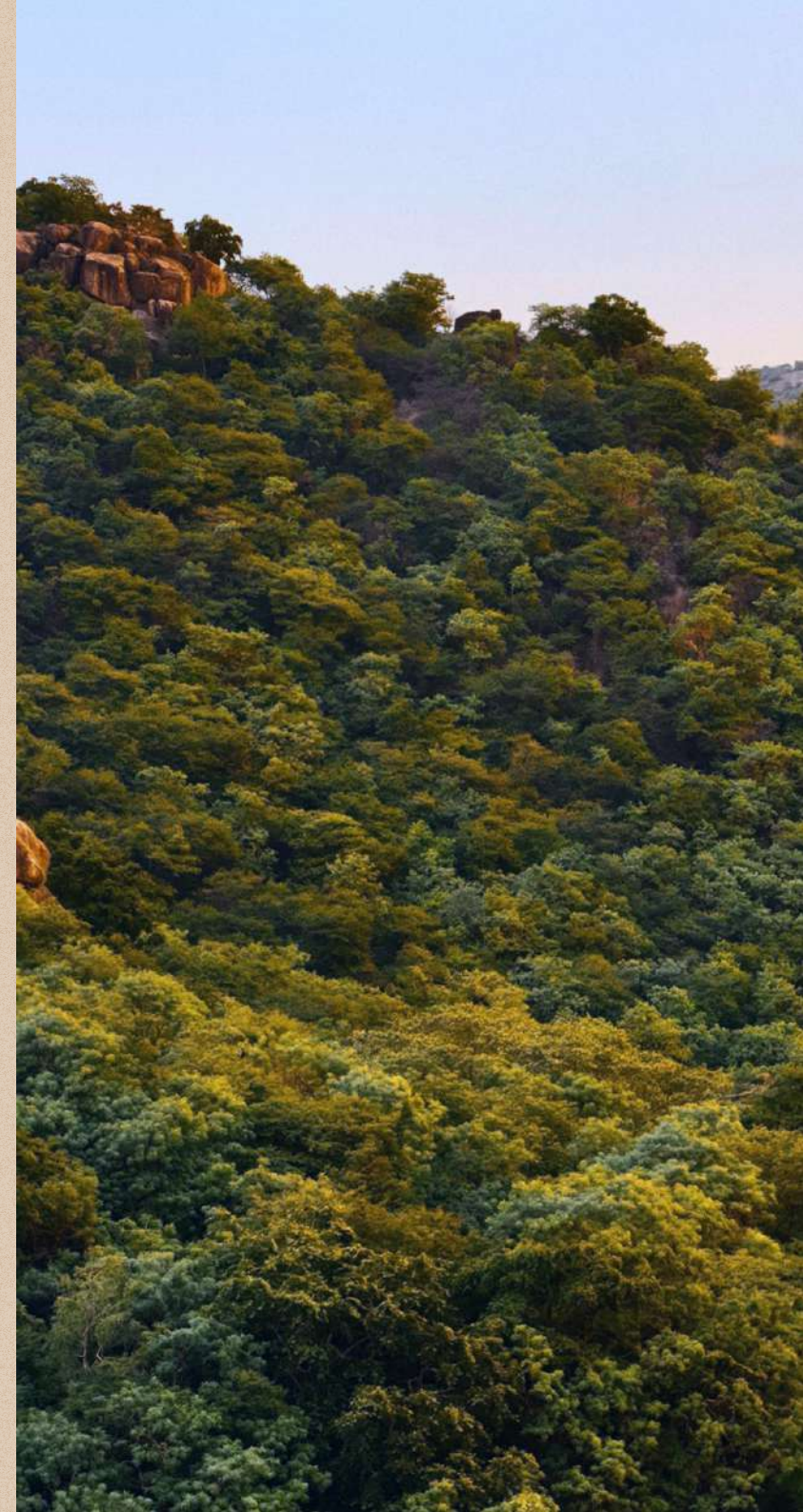
SWITCH TO
SIERRA

SIERRA

BEGINS BY LISTENING

The journey to Sierra is a part of the experience.
The road to Sierra slows the body.
The city begins to loosen its hold.
The sky opens wider.
The horizon stretches longer.

By the time one arrives,
the first switch has already begun.









THE RURAL MEMORY

THE SITE AT CHAKRAPUR CARRIES
TRACES OF USE, WEATHER AND TIME.

Raised field margins, stone boundaries, seasonal
agriculture, working cattle, tree clusters
and flooded fields after rain
give the land a memory of its own.

SIERRA allows the rural character of the place to
become part of the life being imagined here.

The hills, rocks, tree lines and the long horizon become a part of the daily home experience.



SIERRA borrows the landscape with care, framing distant views so that depth, silence and scale are always present.







A COMMUNITY SHAPED BY CONTEXT

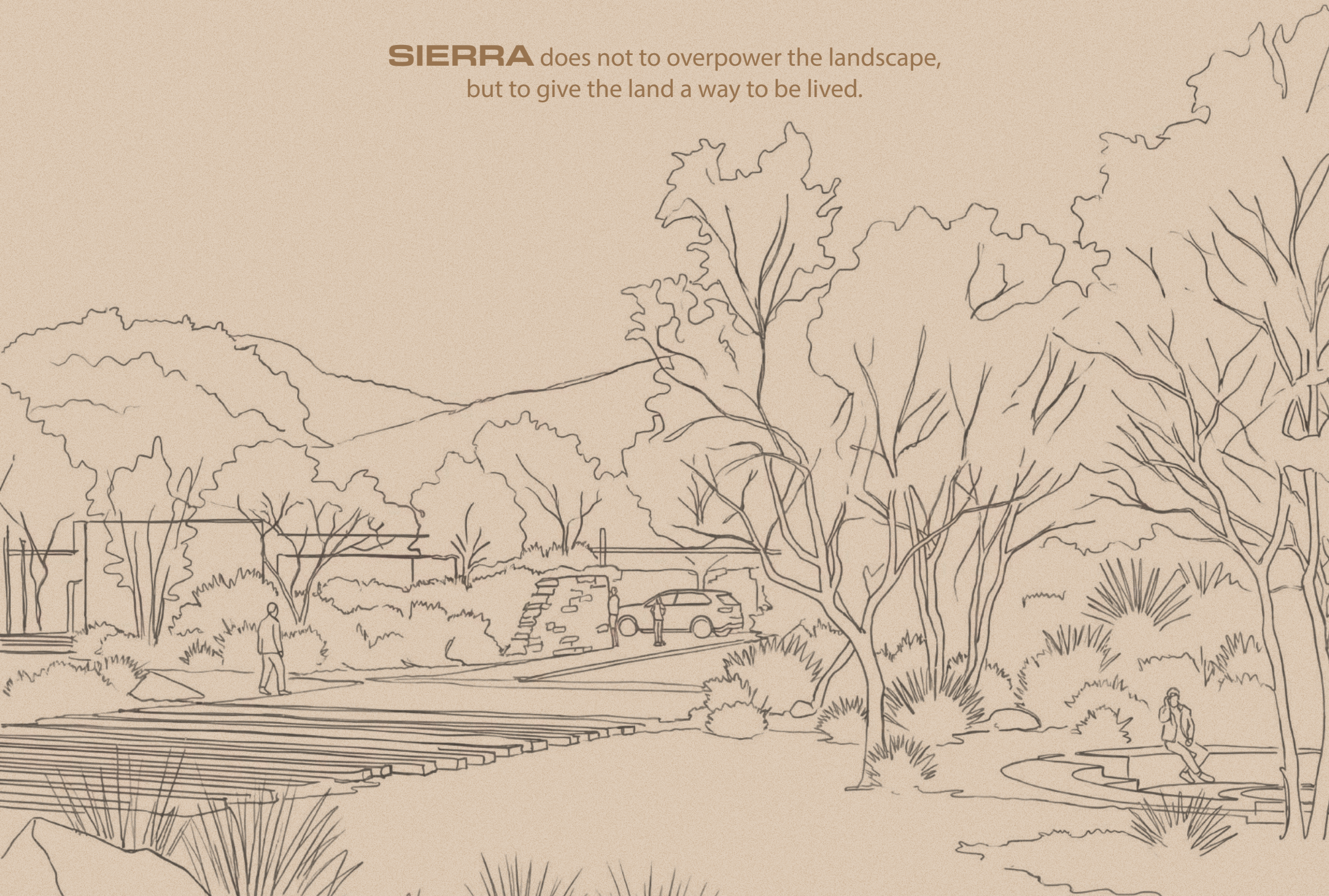
THE PLAN FOLLOWS ACCESS, ECOLOGY,
PRIVACY AND SHARED OPENNESS.

Plot sizes ranging from
750 to 1750 Sq.yards.

Built-up area starting from
2500 to 5000 Sq.feet.



SIERRA does not to overpower the landscape,
but to give the land a way to be lived.



A photograph of a stone wall in a natural setting. The wall is constructed from large, irregular stones and is topped with a layer of green ivy. In the foreground, a paved path runs along the wall, with a woman in a grey shirt and blue shorts walking away from the camera on the left, and a man in a white tank top and black shorts walking towards the camera on the right. The background is filled with lush green trees and a modern building with a dark roof. The sky is a soft, warm color, suggesting late afternoon or early morning. The overall atmosphere is serene and natural.

ARCHITECTURE THAT ALLOWS

Architecture at **SIERRA** is designed with restraint. It frames the land, creates shade, guides movement, protects privacy and opens the home to air and light.

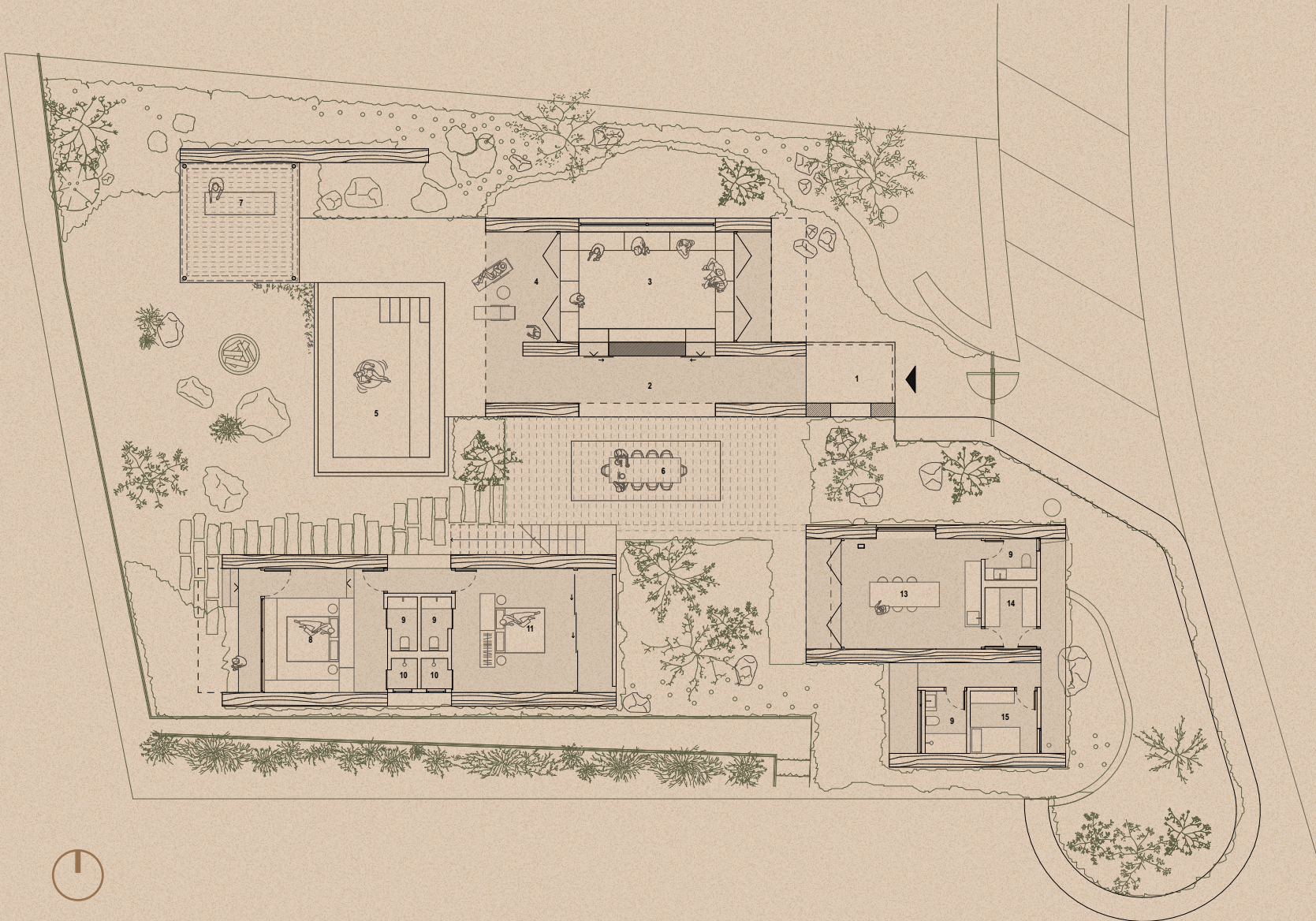






Ground Floor Plan

- 1 Entrance
- 2 Corridor
- 3 Living Room
- 4 Sit - out
- 5 Pool
- 6 Dining
- 7 Bar
- 8 Bedroom
- 9 Toilet
- 10 Shower
- 11 Bedroom 2
- 12 Sit-out
- 13 Kitchen / Dining
- 14 Pantry
- 15 Staff quarter



First Floor Plan

- 1 Dorm style bedroom
- 2 Balcony
- 3 Shower
- 4 Toilet
- 5 Sit - out







DECONSTRUCTED LIVING

ROOMS THAT OPEN
INTO THE LAND

The **SIERRA** home is not planned as one closed volume.

It opens into a sequence of rooms, courtyards, thresholds and outdoor pauses.









THE PAUSE BETWEEN INSIDE & OUTSIDE

THE MOST
IMPORTANT SPACES
AT **SIERRA** ARE
OFTEN THE SPACES
BETWEEN SPACES.

Shaded edges
before a room.

Courtyard with a view.

These pauses make the home
feel slower, softer and more
connected
to the land around it.

PRIVACY

WITHOUT CLOSING THE WORLD OUT

Privacy at **SIERRA** is designed gently. It uses internal landscape pockets, buffer planting, berms, guided walls, courtyards and careful orientation to protect the life inside.

The home can open itself to land and sky, while still allowing its owners to feel completely at ease.

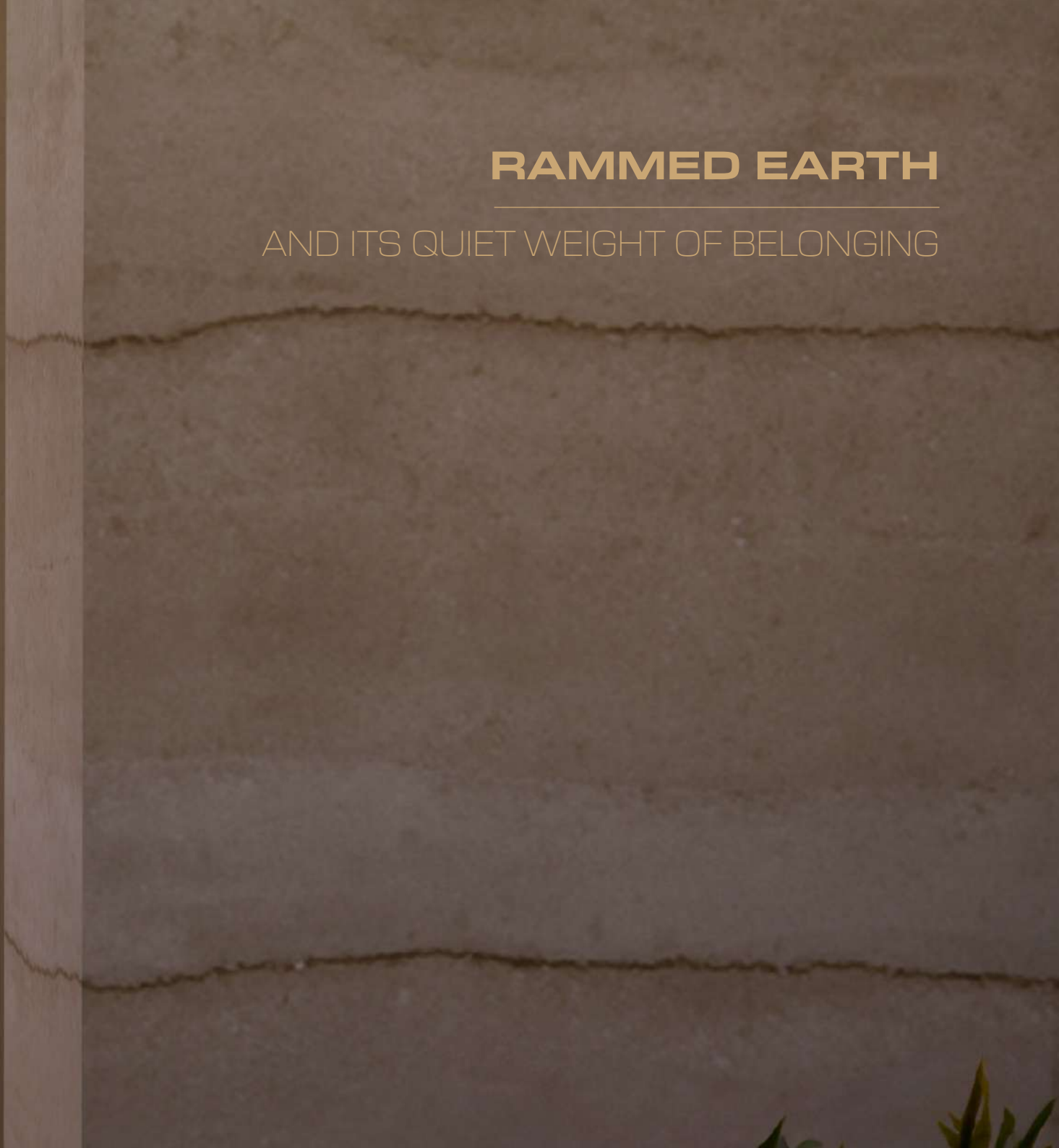






RAMMED EARTH

AND ITS QUIET WEIGHT OF BELONGING





LANDSCAPE AS LIVING INFRASTRUCTURE

The landscape is not ornamental.

It is living infrastructure.

Native planting, wetlands, swales, seasonal water,
grasses, scrub, shade and habitat thinking
come together to let the site age with dignity.



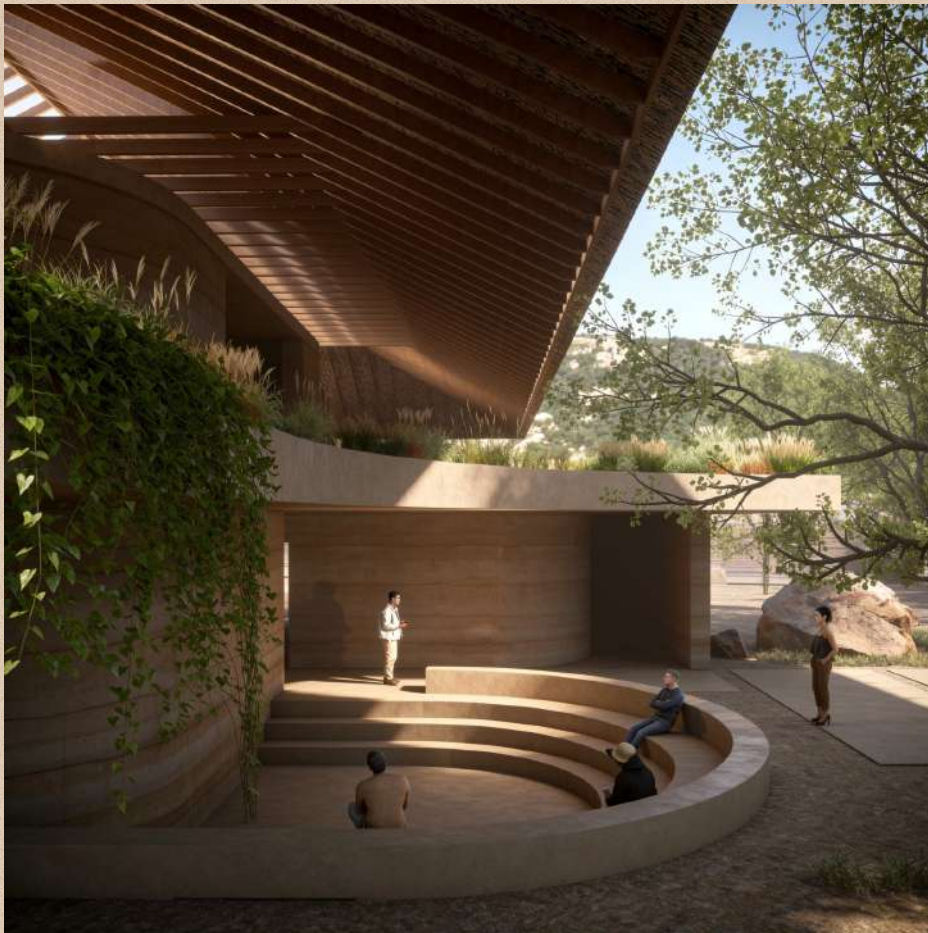






SHARED SPACES

WITHOUT AMENITY NOISE



A meal, a walk, a conversation,
a quiet evening, a small gathering
under shade-imagined for presence,
not performance.

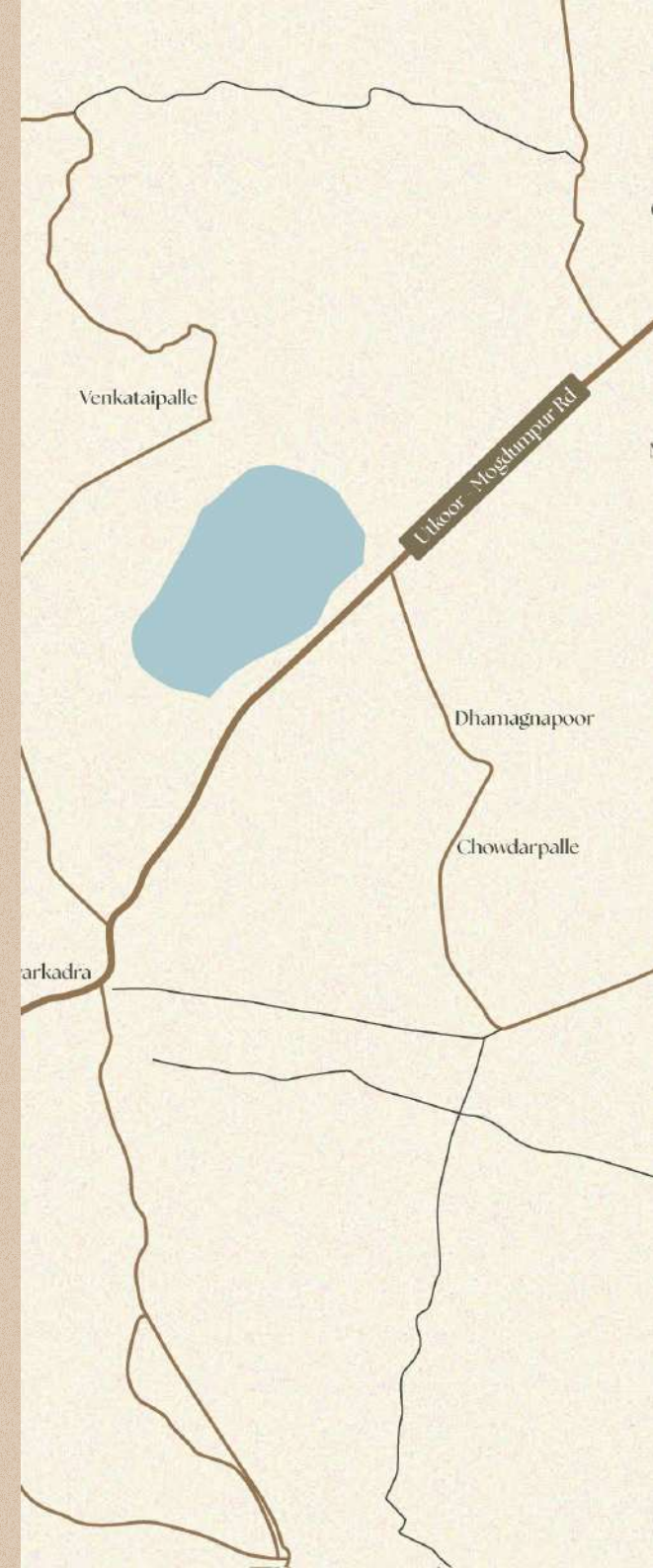
The clubhouse and community hall are
shared rooms for people who
value privacy, design and silence.

LOCATION

Nestled in the heart of scenic rolling hills, **SIERRA** is a peaceful sanctuary tucked just five minutes away from the Bangalore–Hyderabad highway.

Located less than 100 kilometers from the airport, this tranquil getaway is a smooth and scenic 1.5 hour drive from the terminal.

Enjoy effortless accessibility via one of the region's most beautiful highway corridors.





Oblaipalle

Manyamkonda waterfalls

Appaipalle

Gajulapet

SIERRA

Chakrapur

Hajilapur

Kankapur

Janampeta

Baswaipalle

Vemula

Moosapet

Sankalamaddi

Dasaripalle

Hyderabad Bangalore Hwy

PROMOTER

BRDGG⁺

PEOPLE WHO CHANGED THE BRIEF



Architect

Jungly

Landscape Architect

Niranjan
Shreekanth

Rammed Earth Consultant

CATALYST
MEDIAWORKS

Media House

LANTAU
LANTRU

Marketing Consultant

CORE MEMORY
VISUALS

Creative Consultant

