

ASHWOOD

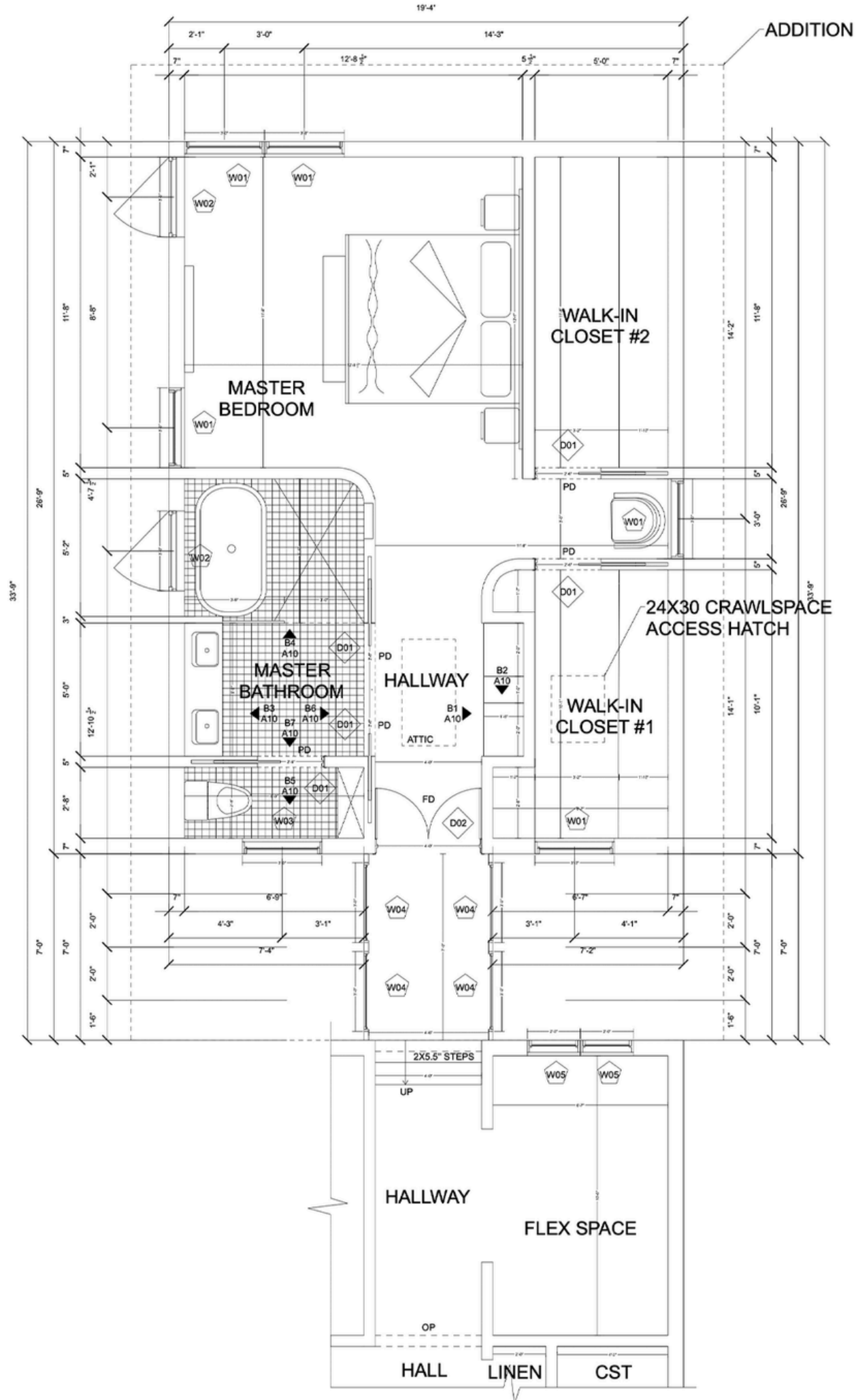


PROJECT OVERVIEW

The Ashwood Residence addition rethinks the relationship between house and landscape through a sequence of carefully composed spaces that expand the home with light, calm, and contemporary precision. Rather than functioning as a standalone volume, the new master suite is approached through a transitional gallery that establishes both atmospheric and architectural continuity between the existing structure and the addition.

LUMINOUS TRANSITIONAL GALLERY

The design begins with a slender, glass-lined gallery that acts as a connector and threshold. Floor-to-ceiling glazing on both sides immerses the corridor in natural light, creating a luminous pause between old and new. Soft cove lighting extends the gallery's length and emphasizes its linear geometry, turning what could have been a simple passageway into a deliberate architectural gesture. The alignment of the gallery also draws views outward, inviting daylight deep into the plan and setting the tone for the suite's serene interior.



1 PROPOSED FLOOR PLAN

SITE PLAN



MASTER BEDROOM

Inside the addition, the master bedroom is shaped by expressive decorative wood beams that animate the ceiling and bring natural warmth into the room. A half-height veneer accent wall behind the bed introduces a tailored, horizontal detail that echoes material rhythms found in the gallery and adjacent spaces. Generous windows frame views to the landscape, reinforcing the room's connection to the exterior. The palette—muted, earthy, and softly textured—supports the bedroom's role as a restorative retreat.



MASTER BATHROOM

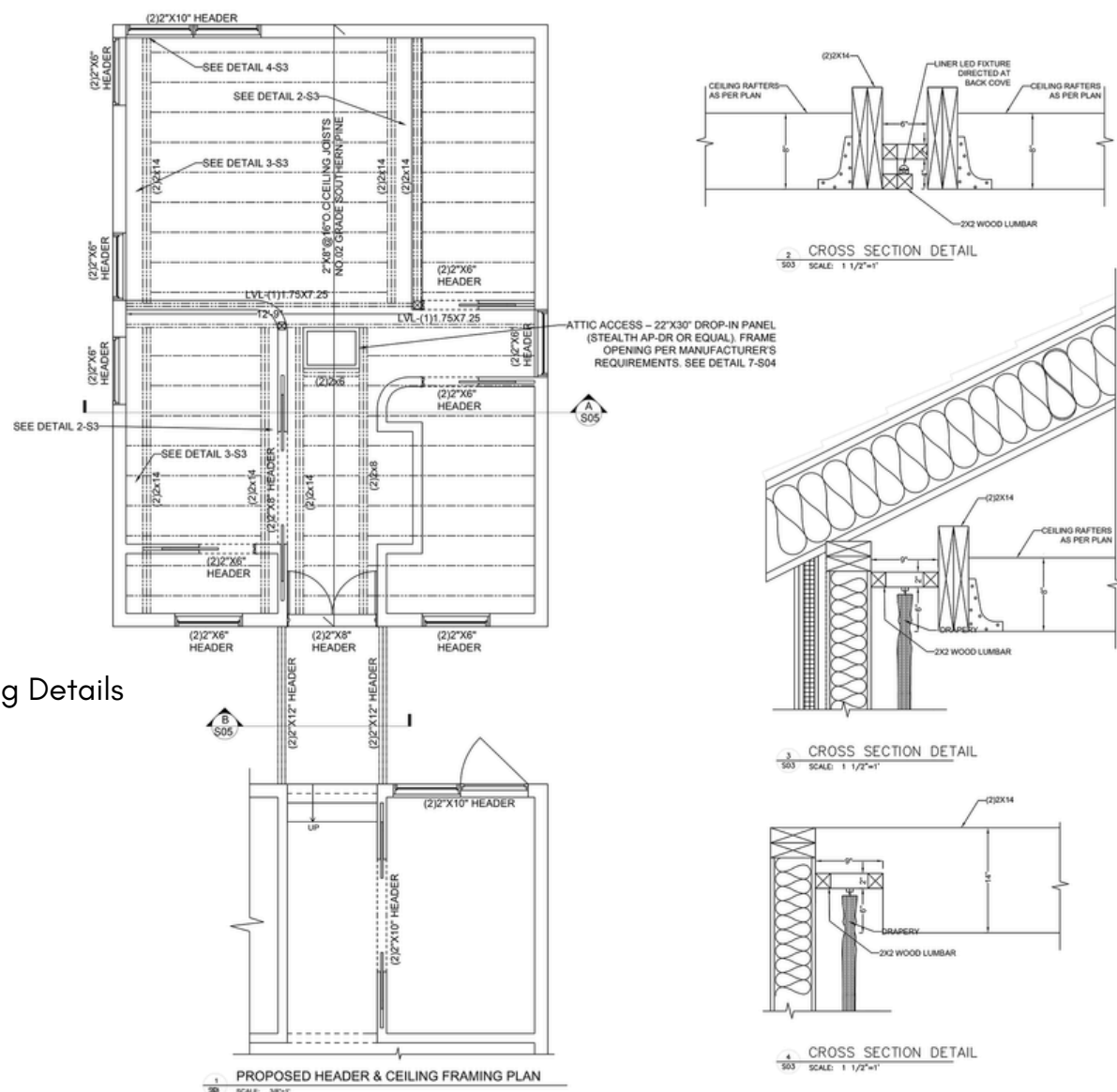


REFINED MOMENTS OF CRAFT



A dry kitchen, tucked within an elegant arched niche, provides a compact moment of utility within the suite while reinforcing the project's emphasis on crafted forms and subtle curvature. Throughout the addition, millwork, lighting, and surface transitions are handled with restraint, supporting a quiet spatial clarity.

Cove Framing Details

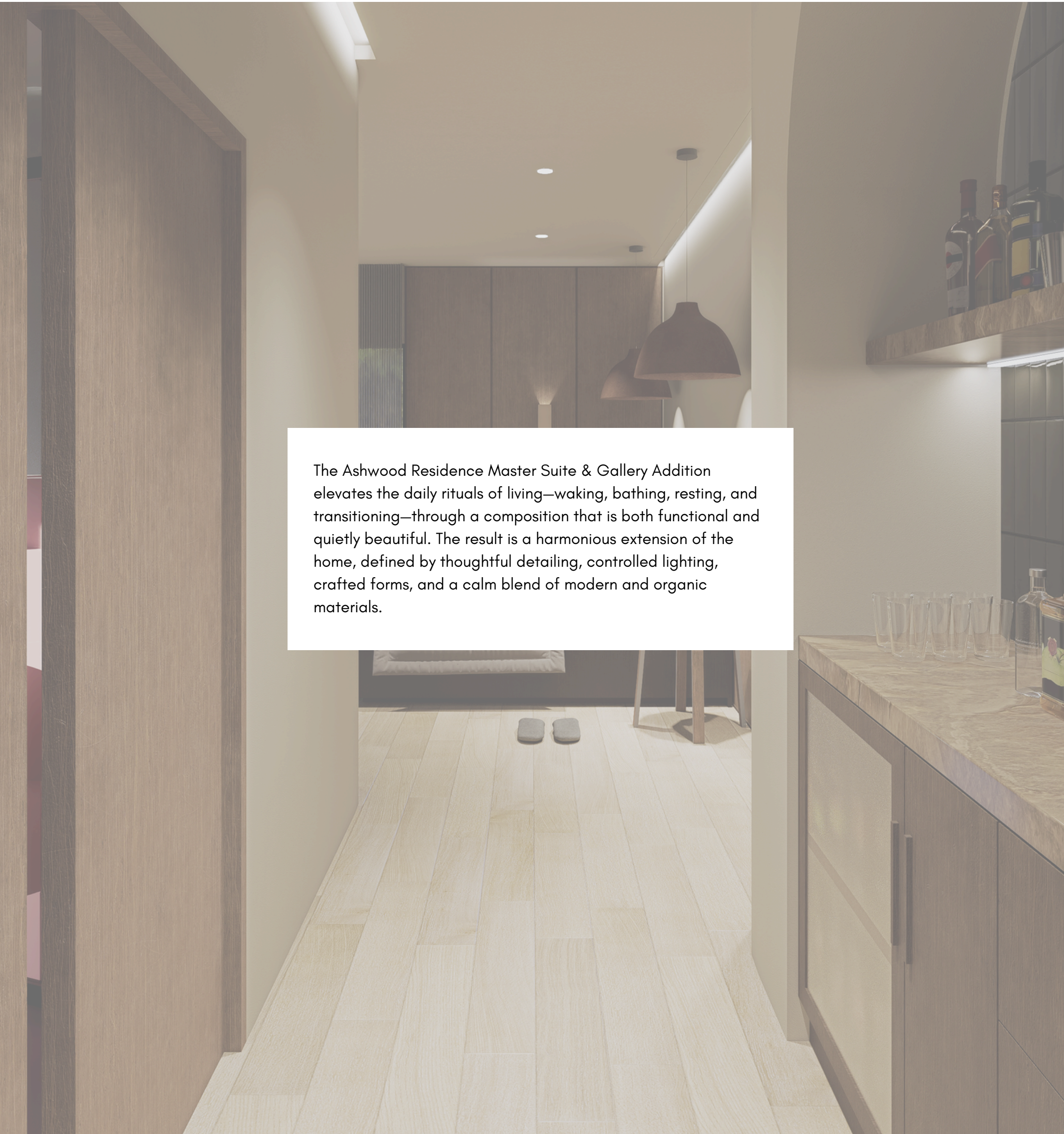


EXTERIOR EXPRESSION

Externally, the addition engages the existing home through proportional alignment and material balance. Vertical cladding, warm wood accents, and simple window openings keep the massing understated while introducing a modern sensibility. A planted bed runs along the façade, grounding the structure within the landscape, while a living green wall subtly bridges the junction between the old and new volumes. The muted exterior palette allows the addition to recede into its surroundings, emphasizing texture, light, and planted elements rather than overt architectural display.



CONCLUSION



The Ashwood Residence Master Suite & Gallery Addition elevates the daily rituals of living—waking, bathing, resting, and transitioning—through a composition that is both functional and quietly beautiful. The result is a harmonious extension of the home, defined by thoughtful detailing, controlled lighting, crafted forms, and a calm blend of modern and organic materials.