



Capability Statement 2024

🌐 www.bitpool.com



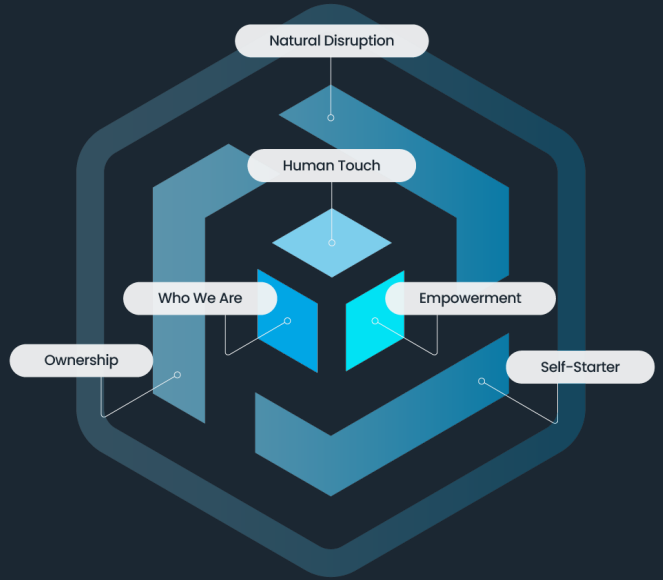
Our Mission

Bitpool's mission is to revolutionise building management by fostering connections between **people, places and planet.**

Small Team, Big Impact

At Bitpool, we merge cutting-edge technology with a dedicated and reliable team, and a culmination of over 100 years of industry experience to deliver exceptional results. Our track record of successful deployments across Australia

and Europe speaks volumes about our effectiveness and efficiency. We take pride in our commitment to understanding and meeting our customers' needs, ensuring that every project is executed seamlessly.



Guided by our values, we strive to make an impact.

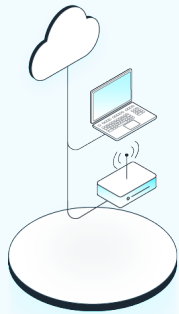
Our team is not just about completing tasks; we are driven by a genuine passion for our work. Each member of the Bitpool team recognises the significance of their work, knowing that it contributes meaningfully and carries substantial impact.

Core Competencies

At Bitpools core, we are all about having a seamless integration from start to end. We work with you, to provide a solution that gives you open access to your data cost-effectively.

Bitpool's competitive edge

- Faster data integration
- Integration of more systems
- Access to all of your data in real-time
- Instant access to AI-driven insights



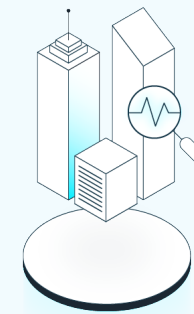
Connect

- Seamless connection to your building
- On the day data extraction from multiple sources (IoT sensors, smart meters, BMS & more)



Translate

- Instantly cleanse and interpret data



Predict

- Access to your data
- 24/7 monitoring on all building equipment & system behaviours

Bitpool Cloud

Bitpool Cloud is a powerful real-time data management & visualisation platform that can ingest unstructured or structured data from any system. It provides a number of widgets, charts and tables that enable users to easily create personalised drag & drop dashboards and views with.

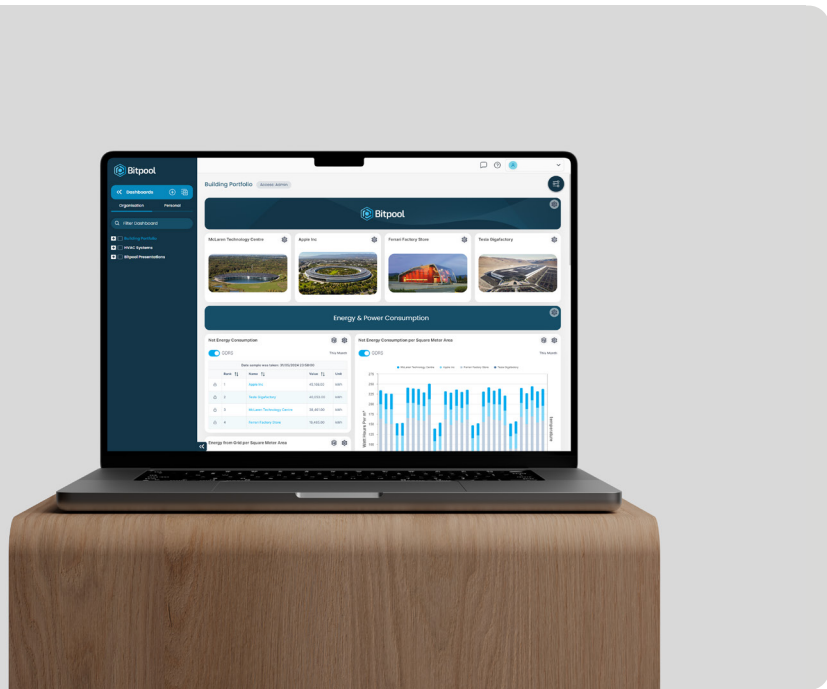
Users can choose a number of methods to upload data into Bitpool Cloud, and then structure their data using industry standard or user defined schemas. Bitpool can also assist customers with data uploads using several gateway options available.



Utilising modern technologies while leveraging existing protocols

We can integrate data from a wide array of systems, including email and CSV imports.

From edge to user interface, we provide a full suite of products that are seamless. We also support simple data extraction to provide choice & control back to the customer. We utilise modern technologies and leverage existing protocols such as BACnet, MQTT, and Restful APIs. This allows us to streamline our programming and data-modelling flows and reach solutions that can easily be integrated onto customer premises or into the cloud.



Cyber Security

Our primary goal is to protect our organisation, employees, customers and assets against any potential for cyber threats and attacks. At Bitpool, we enlist the Zero Tier Model. This model assumes

that no entities can be trusted and must be authenticated. To date, Bitpool effectively implements 2FA (Two Factor Authentication), SSO (Single Sign-On) and 2FA Code.

2FA (Two Factor Authentication)

- Two forms of identification are required for access

SSO (Single Sign-On)

- Signing on with one set of credentials reduces risk of poor user management

2FA Code

- Further protection layer for 2FA authentication



ISO 27001 Focused

- Resilience to cyber-attacks
- Preparedness for new threats
- Data integrity, confidentiality and availability
- Security across all supports
- Organisation-wide protection

About Bitpool

Bitpool, co-founded in 2020 by Ben Carter and David Blanch, was established around solving a critical problem in the market overlooked by competitors. As a leading innovator in building technology, Bitpool provides unparalleled access to AI-driven actionable building insights,

empowering clients with the tools they need for efficient and effective building management. Bitpool is proudly a Viessman Co-creator since 2022. Together we co-create living spaces for generations to come.



Smart buildings start with smart data management. Together with Bitpool we help get buildings ready for a net-zero future – from Australia to the whole world.

Achim Berg

Operating Partner & Senior Advisor
Viessmann Group



Get in touch with us

Bitpool Pty Ltd

ABN 80 646 766 592

Bitpool Office

📍 **Suite 2**, 37 Brandl St
Eight Mile Plains, QLD, 4113

☎ 1300 4248 7665

