



NORDIC SIGNATURE

 LUXURY RESORTS AND TAILOR-MADE EXPERIENCES

Discover a handpicked collection of the Nordics' most exquisite resorts, where nature and landscapes are the true luxury.

Our team will craft personalised itineraries for your clients with these properties, featuring unforgettable dining and exceptional experiences set against the Nordic's natural backdrop.



**THE SIGNATURE
EXPERIENCE**

At Haman Travel, we specialise in bespoke journeys through the Nordics, where nature and tranquillity are the ultimate luxuries. Our expert consultants craft fully personalised itineraries, designed around your clients' unique desires—seamlessly combining refined comfort with extraordinary natural experiences.

THE SIGNATURE EXPERIENCE

HANDPICKED RESORTS

In this brochure you will find a curated selection of the Nordics' most exclusive hotels and resorts, all located in outstanding natural surroundings—from the Arctic wilderness to scenic fjords and peaceful forests.

Each property has been carefully chosen by our travel specialists for its high standards of comfort, excellent service, and close connection to nature.

[View resorts →](#)

TAILORED EXPERIENCES

In addition to these carefully selected properties, our travel experts can arrange a wide range of personalised experiences to enhance your clients' stay. This includes private outdoor activities, spa and wellness programmes, and unique dining options such as underwater restaurants, chef's table experiences, and Michelin-starred meals.

Every element can be tailored to suit your clients' interests, ensuring a truly memorable and seamless journey through the Nordics.

MEET YOUR TRAVEL SPECIALISTS

Get to know the dedicated experts behind Nordic Signature. Michelle, Jana, and Marta have been part of the Haman Travel team for many years. With their deep-rooted knowledge of the region and a true passion for creating exceptional journeys, they know the Nordics like the back of their hands.

They've poured their expertise and love for the region into this brochure—and together with our team, they'll craft personalised itineraries tailored to you and your clients' individual needs.



MICHELLE SMITH
Director of Sales & Operations
email@email.com



JANA BOHN
Manager FIT
email@email.com



MARTA AIZPURUA
Manager Sales & Operations
email@email.com

THE NORDICS - WHERE NATURE DEFINES LUXURY



UNPLUG IN NATURE

The ultimate luxury in today's fast-paced world is not found in things—but in space, stillness, and silence. In the Nordics, vast open landscapes and untouched wilderness offer rare breathing room, both physically and mentally. This is where travellers can disconnect from the noise and reconnect with themselves—surrounded by nature in its purest form.

EXPERIENCE THE SEASONS

From the endless daylight of the midnight sun to the shimmering beauty of the Northern Lights, each season in the Nordics brings its own magic. Spring bursts to life with waterfalls and wildflowers; autumn cloaks the forests in gold. Every season transforms not just the scenery, but the entire mood and rhythm of the journey.

CONNECT WITH THE WILD

In the Nordics, nature is not just seen—it's lived. Whether husky sledding across Arctic tundra, kayaking through mirror-like fjords, hiking dramatic coastal trails, or unwinding in a forest sauna by a secluded lake, every experience brings your clients closer to the land. It's luxury through connection: invigorating, grounding, and unforgettable.

FROM NATURE TO TABLE

Dining in the Nordics is deeply rooted in nature. The restaurants we feature are handpicked for their use of local, seasonal, and sustainable ingredients—many sourced directly from nearby forests, farms, and fjords. Whether it's a multi-course foraged tasting menu in Lapland or freshly caught seafood by the coast, every meal is a celebration of place, tradition, and purity of flavour.

INDEX

NORWAY

Amerikalinjen
Wangen Apartments
Elva Hotel
Storfjord Hotel
Holmen Husky
Union Øye
Wood Hotel Bodø
Nusfjord Arctic Resort
Aurora Fjord Cabins
Havila Kystruten

SWEDEN

Trakt Forest Hotel
Yasuragi
Copperhill Mountain Resort
ICEHOTEL
Arctic Retreat
Loggers Lodge
Arctic Bath
Treehotel
Hôtel Reisen

DENMARK

Dragsholm Slot
Falsled Kro
Ruth's Hotel
71 Nyhavn

FINLAND

The Hotel Maria
Kotona Manor
Kuru Resort
Star Arctic
Levi Spirit
Invisible Forest Lodge
Jänkä Resort
Wilderness Hotel Saariselkä
Santas Chalet Rakka

ICELAND

Silica Hotel
Sand Hotel
Siglo Hotel
Torfhus Retreat

GREENLAND

Iliamanaq Lodge

FAROE ISLANDS

Hotel Føroyar

THE BALTICS

Hotel Telegraaf
Grand Poet Hotel
Hotel Pacai



THIS INDEX IS INTERACTIVE

Simply click on the property or destination you'd like to explore, and you'll be directed instantly to the relevant page

SIGNATURE RESORTS IN NORWAY





AMERIKALINJEN

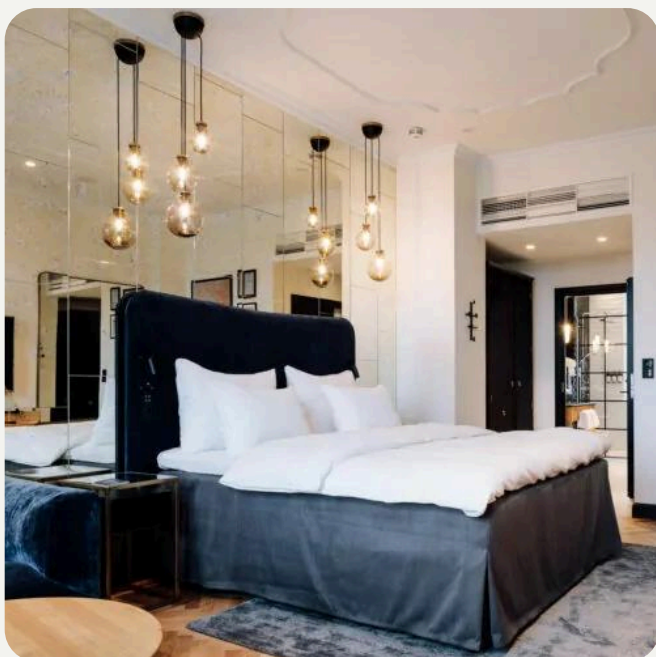
📍 OSLO, NORWAY

Amerikalinjen is a high-standard hotel in central Oslo, ideal for clients seeking comfort, style, and history. Located in the restored 1919 headquarters of the Norwegian America Line, it offers 122 beautiful rooms and suites with modern amenities, high ceilings, and soundproof windows.

All stays include à la carte breakfast served in the Atlas Brasserie, complimentary access to the fitness centre and sauna, and free Wi-Fi. The hotel also features Pier 42 cocktail bar and Gustav, an intimate jazz club.

In Oslo, nature is always close. Forests like Nordmarka and Østmarka are easily reached by public transport and offer a wide range of outdoor activities, from hiking and biking to skiing in winter.

The Oslofjord is just as accessible, with ferries connecting the city to nearby islands where visitors can enjoy walking trails, beaches, and peaceful views. Whether in the forest or by the sea, it's easy to connect with nature in Oslo.



[← Back to index](#)

Image Credit: Amerikalinjen



WANGEN APARTMENTS

📍 AURLAND, NORWAY

Wangen Apartments offer a high-standard stay in the heart of Aurland, combining privacy, comfort, and striking fjord views. Opened in 2023, the property features a range of spacious, thoughtfully designed apartments—many with private balconies overlooking the Aurlandsfjord. Interiors are modern and minimalist, with high-quality furnishings, fully equipped kitchens, and generous living areas. Keyless check-in, free Wi-Fi, and private parking add to the seamless guest experience. With its premium location on the waterfront and a focus on space and design it provides a refined alternative to traditional hotel stays in the fjord region.

Surrounded by steep mountains, cascading waterfalls, and the serene Aurlandsfjord, Aurland offers direct access to some of Norway's most striking natural landscapes. Visitors can enjoy hiking trails such as the Aurlandsdalen Valley, known as one of the country's most beautiful hikes, or take in panoramic views from the Stegastein viewpoint. The fjord itself invites peaceful boat trips and kayaking, while the surrounding countryside offers opportunities for biking, fishing, and spotting wildlife. In Aurland, nature is not just nearby—it is all around.



[← Back to index](#)

Image Credit: Wangen Apartments by Fjordresort



ELVA HOTEL

📍 VOSS, NORWAY

Elva Hotel is a boutique design hotel located in Voss, Norway, offering a harmonious blend of modern architecture and natural surroundings. The property consists of a main building and five unique mini-houses, each named after local rivers and providing panoramic views of Lake Lundarvatnet and the surrounding mountains. The main building houses four guest rooms, a conference room, and a fine dining restaurant that emphasizes local produce from the Voss and Westland regions. The mini-houses feature two to three suites with floor-to-ceiling windows, custom-built furnishings from Styve Møbelsnikkeri, and Norwegian-designed furniture.

Guests can enjoy amenities such as outdoor hot tubs, a wood-fired sauna, and access to various outdoor activities, including white-water rafting and kayaking.

Voss is a haven for outdoor enthusiasts and nature lovers alike. The picturesque Lake Vangsvatnet is perfect for kayaking and fishing, while the nearby Hardangerfjord offers scenic boat tours. For thrill-seekers, Voss is renowned for its adventure sports, including paragliding and white-water rafting.



[← Back to index](#)

Image Credit: Elva Hotel Voss



STORFJORD HOTEL

📍 SKODJE, NORWAY

Nestled on a hillside overlooking the majestic Storfjord and the Sunnmøre Alps, Storfjord Hotel offers an immersive experience in Norway's natural beauty. Constructed in traditional log cabin style with grass roofs, the property harmoniously blends with its natural surroundings.

The hotel features only 30 rooms, including four suites, each thoughtfully designed with rustic elegance, offering panoramic views of the fjord and mountains. Guests can indulge in a four-course dinner at the on-site restaurant, which emphasizes locally sourced ingredients and Norwegian culinary traditions.

Additional amenities include a spa with an outdoor hot tub, a sauna, and various activities such as hiking, skiing, and kayaking.

During winter months, the area transforms into a cross-country skiing haven, with trails winding through snow-blanketed forests and sparkling landscapes, providing a peaceful retreat from everyday life.



[← Back to index](#)

Image Credit: Storfjord Hotel



HOLMEN HUSKY

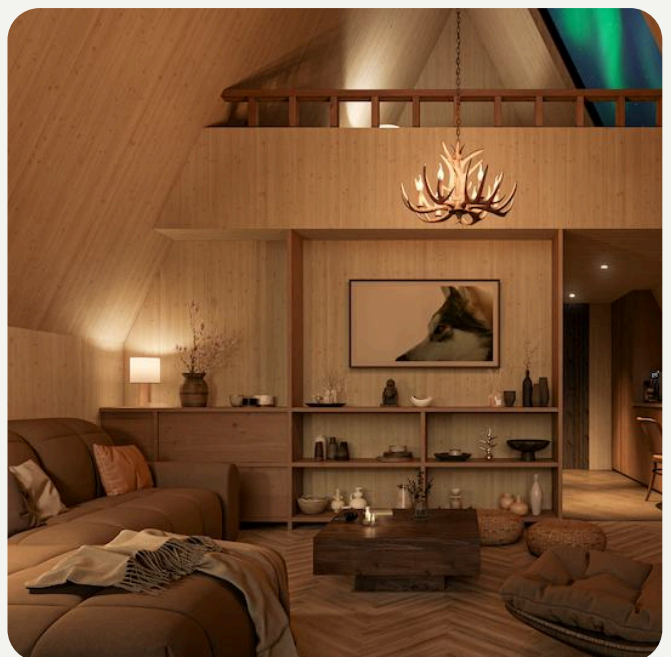
📍 ALTA, NORWAY

The Forest Suite at Holmen Husky offers an immersive Arctic experience with its Forest Suites, combining rustic charm with modern luxury. Each 62-square-meter A-frame cabin features a spacious living area with a 5-meter-tall panoramic window overlooking the untouched forest, allowing natural light to flood the space.

The upstairs bedroom, equipped with a king-size bed, includes a large window perfect for stargazing or observing the Northern Lights from the comfort of your bed. The bathroom showcases natural materials, including Alta slate rock and sustainable wooden fixtures.

Holmen Husky offers guests the unique opportunity to engage with a team of friendly Alaskan huskies. Visitors can participate in dog sledding tours, experiencing the thrill of mushing through the pristine Arctic landscape.

Beyond the lodge, Alta provides a wealth of nature-based activities. During the winter months, guests can enjoy various winter activities across the Finnmarksvidda plateau, exploring the vast, snow-covered tundra.



[← Back to index](#)

Image Credit: Holmen Husky Forest Suite

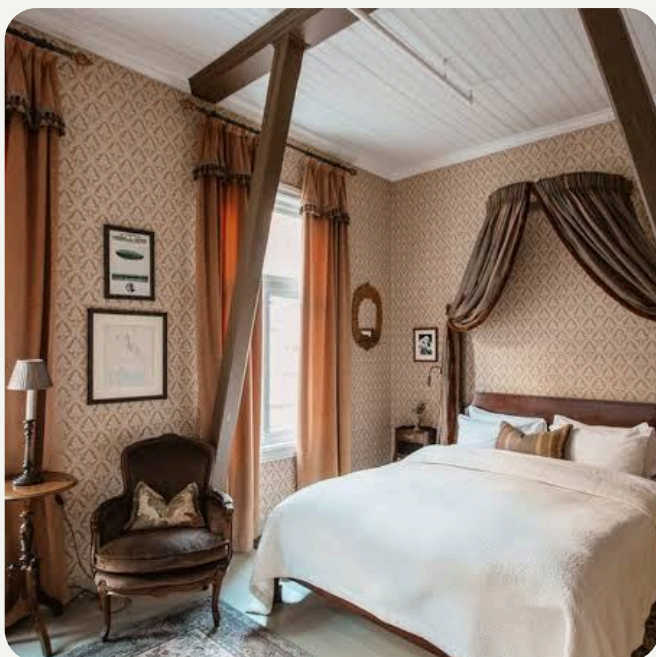


UNION ØYE

📍 NORANGSFJORDEN, NORWAY

Tucked away at the end of the Norangsfjord, Hotel Union Øye is one of Norway's most enchanting retreats. This historic hotel, dating back to 1891, sits in the heart of the Sunnmøre Alps, where dramatic peaks rise sharply from the deep blue fjords, and waterfalls cascade down steep rock faces. Surrounded by lush forests and mirror-like waters, the setting is nothing short of magical—an untouched landscape that seems frozen in time. The hotel itself feels like a fairytale manor, steeped in stories of royalty, explorers, and artists who once sought inspiration in its quiet grandeur.

Guests can explore the mystical Norangsdalen valley, paddle through the fjord's still waters, or simply sit in the garden with a glass of wine, wrapped in silence and the sound of nature. Whether cloaked in summer greens or dusted with snow, the surroundings of Union Øye offer a profound sense of peace and connection to the raw, majestic beauty of Norway.



[← Back to index](#)

Image Credit: Hotel Union Øye



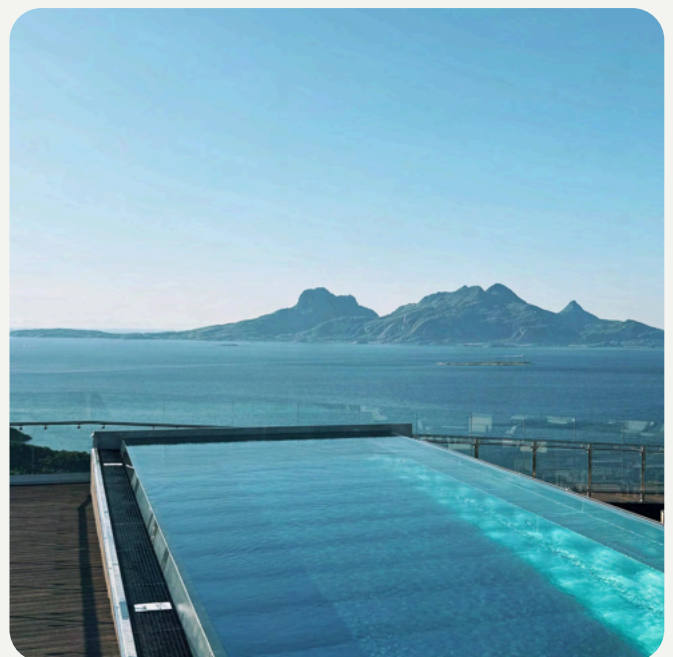
WOOD HOTEL BODØ

📍 BODØ, NORWAY

Wood Hotel Bodø is a striking resort located atop Rønvikfjellet mountain, offering breathtaking panoramic views of Bodø, Vestfjorden, and the surrounding Børvasstindene mountain range. The hotel is designed with natural materials, seamlessly blending modern architecture with its stunning natural surroundings. It offers 177 rooms and 32 apartments, each equipped with comfortable furnishings and large windows to take in the magnificent views.

For relaxation and wellness, the hotel features a heated outdoor pool, steam sauna, and a wellness area designed to help guests unwind after a day of outdoor adventure.

Bodø is renowned for its vibrant natural landscapes, providing a plethora of outdoor activities. Visitors can embark on hiking adventures in the Børvasstindan mountain range, explore the scenic trails of Rønvikfjellet, and experience the world's strongest tidal current at Saltstraumen through RIB-rafting excursions. The region also offers opportunities for kayaking, mountain biking, and wildlife experiences, including sea eagle tours and moose safaris. Additionally, the proximity to the Arctic Circle allows for unique natural phenomena, such as the midnight sun during summer and the northern lights in winter.



[← Back to index](#)

Image Credit: Wood Hotel Bodø



NUSFJORD ARCTIC RESORT

📍 LOFOTEN, NORWAY

Nusfjord Arctic Resort is located in one of Norway's oldest fishing villages, in the heart of the Lofoten Islands. The resort offers a peaceful setting surrounded by mountains and the sea. Guests stay in restored fishermen's cabins, known as rorbuer, which combine traditional design with modern comfort. The harbour is calm and quiet, and the village has been carefully maintained to reflect its history.

Visitors can take part in a range of outdoor activities, such as kayaking, fishing, and hiking. There are also options for guided experiences that give insight into the area's nature and culture. After a day outside, guests can relax in the wood-fired sauna or hot tub, both with views of the fjord. Whether visiting in summer or winter, Nusfjord offers a calm and authentic base for exploring the Arctic landscape.



[← Back to index](#)

Image Credit: Nusfjord Arctic Resort



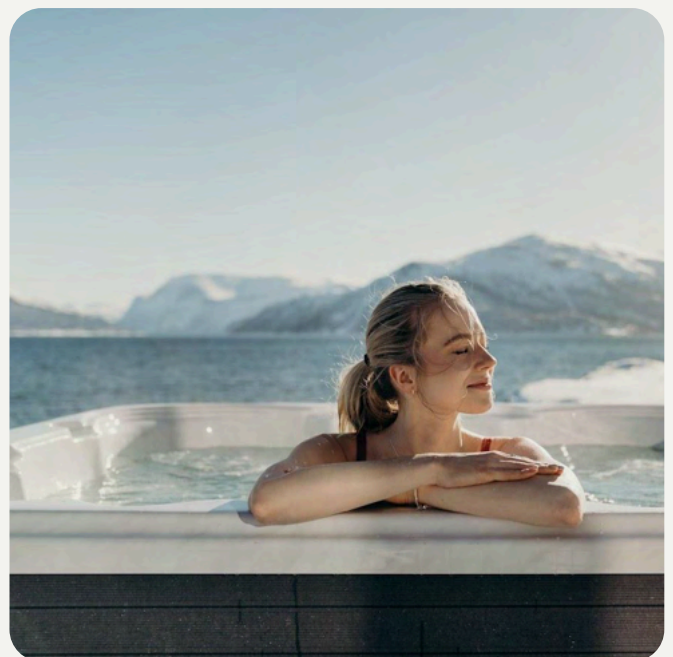
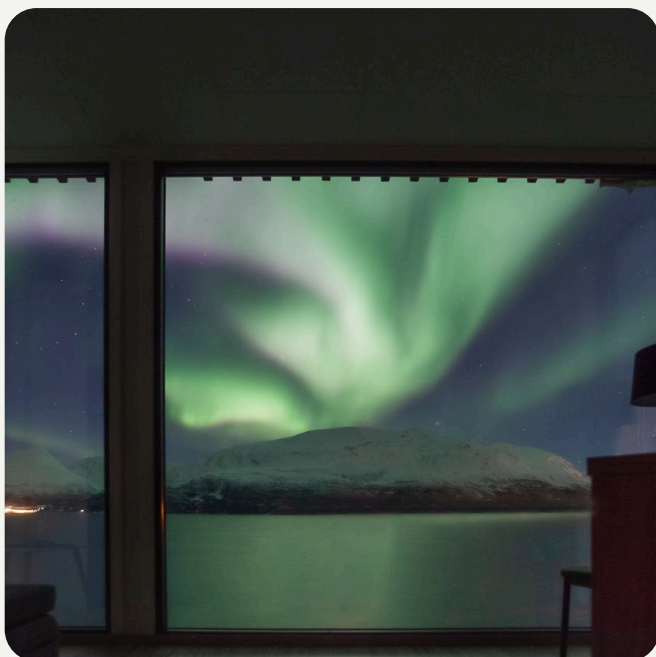
AURORA FJORD CABINS

📍 LYGSEIDET, NORWAY

Aurora Fjord Cabins, situated in Lyngseidet, Norway, offer a serene retreat with panoramic views of the fjord and surrounding mountains. Each of the 10 mini cabins is designed for two guests and features floor-to-ceiling windows, providing an immersive experience of the natural beauty.

The cabins are equipped with modern amenities, including a kitchenette with essential appliances, a private bathroom, and a cozy bedroom. Guests can also opt for deluxe cabins that include private jacuzzis, enhancing the relaxation experience.

Lyngseidet itself is nestled under the majestic Lyngen Alps, offering a variety of outdoor activities such as skiing, fishing, and kayaking. The region's unique position within the Aurora Belt provides excellent opportunities to witness the Northern Lights during the winter months, making it an ideal destination for nature enthusiasts and those seeking tranquility.



[← Back to index](#)

Image Credit: Aurora Fjord Cabins



HAVILA KYSTRUTEN

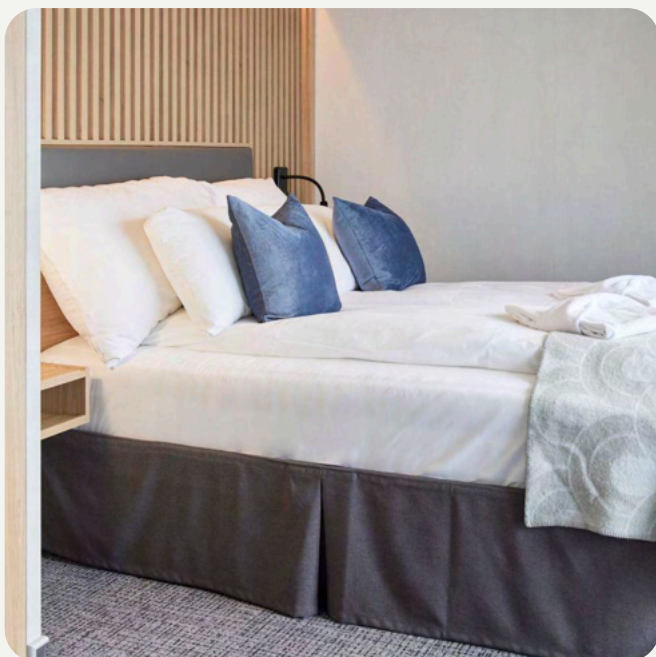
📍 NORWAY

Havila Kystruten, operated by Havila Voyages, offers sustainable and eco-friendly cruise experiences along Norway's stunning Bergen–Kirkenes–Bergen coastal route. The fleet consists of four modern ships that are environmentally consciously designed and this allows the ships to operate in Norway's fjords and coastal regions with minimal environmental impact.

Onboard, passengers can enjoy a range of modern amenities, including comfortable cabins, multiple dining options, lounges, and wellness facilities, all while taking in the breathtaking views of Norway's natural beauty.

In the south, the journey showcases the stunning Geirangerfjord, a UNESCO World Heritage site, known for its steep cliffs, cascading waterfalls, and vibrant greenery. Further north, the ship crosses the Arctic Circle, offering the chance to witness the striking contrasts of the midnight sun in summer and the Northern Lights in winter.

The route also passes through the beautiful Lofoten Islands, with their distinctive peaks and sandy beaches, and the remote, wild landscapes of Tromsø and North Cape.



SIGNATURE RESORTS IN SWEDEN





TRAKT FOREST HOTEL

📍 HOLSBYBRUNN, SWEDEN

Trakt Forest Hotel is situated in the peaceful pine forests of Sällenhägnad, Sweden, offering a luxurious and sustainable retreat. The property features five exclusive suites, designed by architect Gert Wingård, which are elevated on stilts to reduce environmental impact and provide stunning views of the forest canopy.

Each suite is thoughtfully designed with locally sourced materials and includes amenities such as wood-burning fireplaces and outdoor hot tubs for a comfortable and relaxing stay.

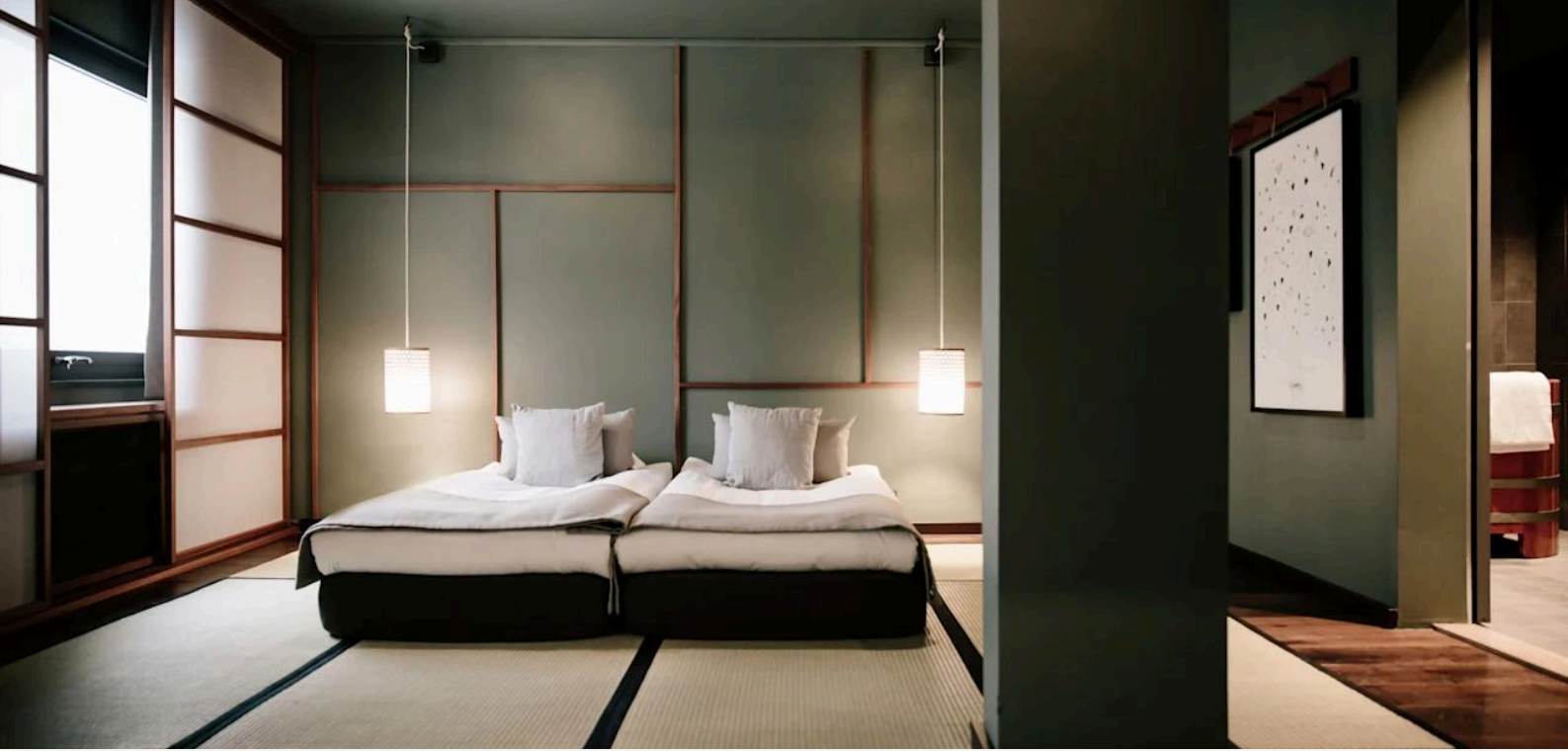
The hotel emphasizes sustainability, with its farm-to-table dining concept, serving meals made from locally sourced ingredients. Guests can immerse themselves in nature with activities like hiking along tranquil forest paths, boating on nearby Lake Vrången, or unwinding in a lakeside sauna.

This setting ensures a perfect balance of luxury and nature, making it an ideal getaway for those looking to escape into the beauty of the Swedish wilderness.



[← Back to index](#)

Image Credit: Trakt Forest Hotel



YASURAGI

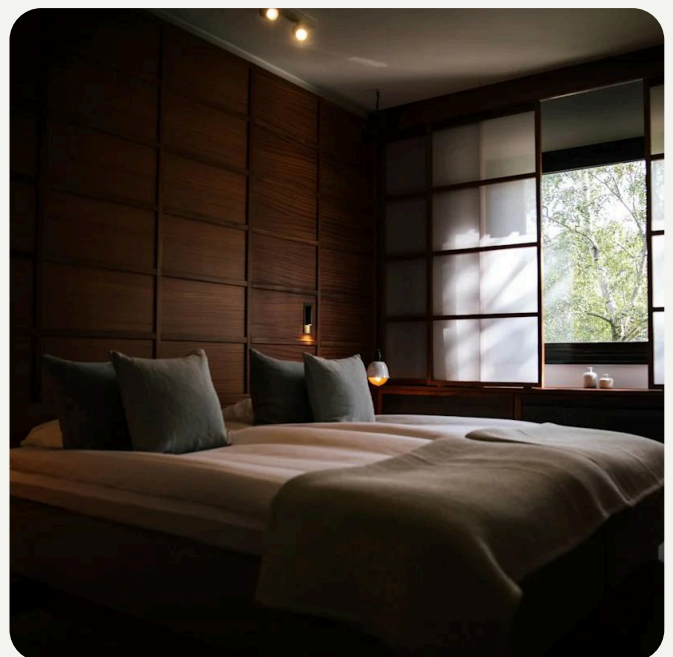
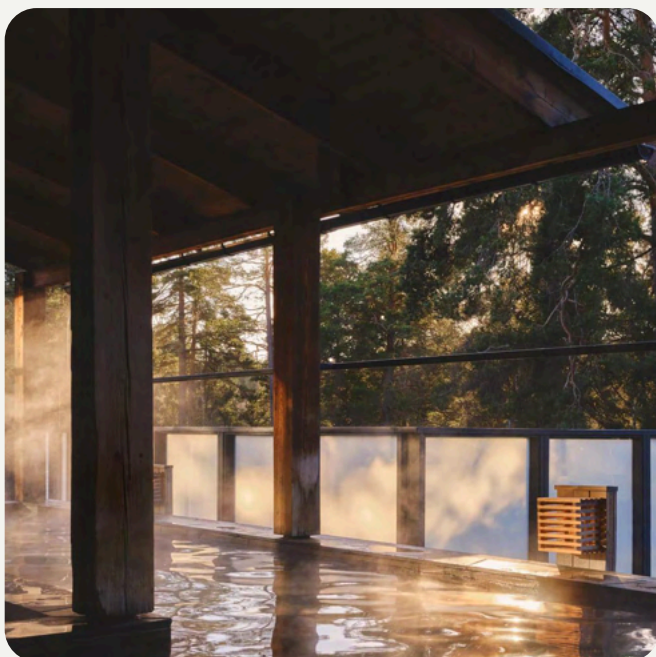
📍 STOCKHOLM, SWEDEN

Yasuragi is a spa hotel located just outside Stockholm, Sweden, known for its focus on relaxation and Japanese-inspired wellness. Surrounded by forest and overlooking the Stockholm archipelago, the hotel offers a quiet escape from the city. Its design and atmosphere are influenced by Japanese culture, with traditional elements such as tatami mats, hot spring baths (onsen), and minimalist interiors.

Guests at Yasuragi can take part in activities like meditation, yoga, and tea ceremonies, or simply unwind in the large indoor and outdoor baths.

The hotel provides guests with cotton robes (yukata) and encourages a digital detox to create a calm, focused environment.

The restaurants serve mainly plant-based and seasonal dishes, in line with the hotel's focus on balance and health. Yasuragi is designed as a place to slow down, rest, and reconnect, whether visiting for a day or a longer stay.



[← Back to index](#)

Image Credit: Yasuragi

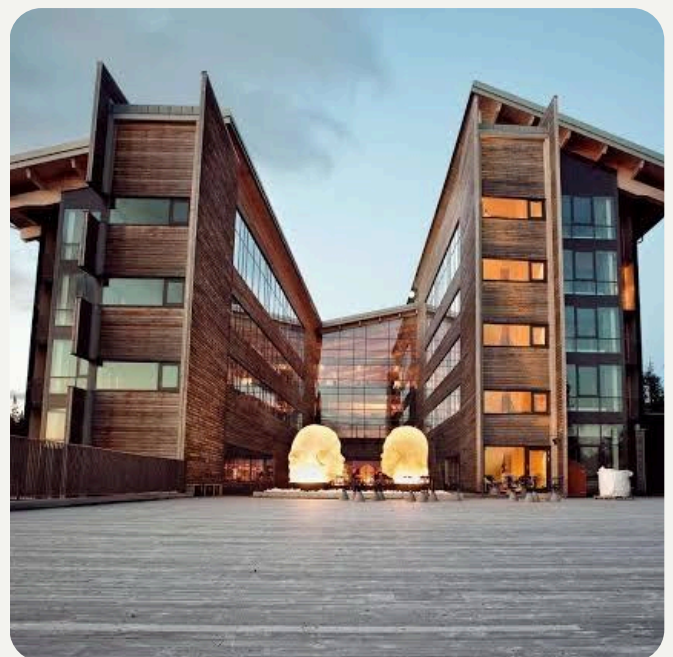


COPPERHILL MOUNTAIN LODGE

📍 ÅRE, SWEDEN

Copperhill Mountain Lodge is a modern design hotel set high on Förberget Mountain in Åre, one of Sweden's most popular ski and outdoor destinations. Surrounded by forest and with panoramic views over the mountains and valley below, the hotel offers a comfortable and stylish base for both winter and summer stays. Designed by American architect Peter Bohlin, the building combines natural materials like stone, wood, and glass to create a warm and open atmosphere that blends with its surroundings.

The hotel has direct access to the ski slopes through its own lift, making it convenient for guests to hit the slopes in winter. In summer, the area is popular for hiking, mountain biking, and exploring Åre's alpine scenery. Inside, the hotel features a full-service spa with saunas, pools, and treatments, as well as a restaurant and bar serving seasonal Nordic cuisine. Large windows throughout the hotel let in natural light and offer wide views of the landscape.



[← Back to index](#)

Image Credit: Copperhill Mountain Lodge



ICEHOTEL

📍 JUKKASJÄRVI, SWEDEN

ICEHOTEL is a one-of-a-kind property located in the village of Jukkasjärvi in Swedish Lapland, around 200 km north of the Arctic Circle. First built in 1989, it was the world's first hotel made entirely of ice and snow. Rebuilt each winter with new designs by international artists, it offers guests the chance to sleep in hand-carved ice rooms, as well as enjoy seasonal ice art exhibitions.

In addition to the seasonal hotel, ICEHOTEL 365 is a permanent structure that allows guests to stay in ice rooms all year round.

The facility is powered by solar energy during the summer months and features a mix of warm and cold accommodation.

The surrounding nature is a strong draw for visitors. In winter, guests can experience the Northern Lights, dog sledding, and snowmobiling. During the summer, the Midnight Sun offers 24-hour daylight, ideal for hiking, canoeing, and exploring the unspoiled Arctic landscape.



[← Back to index](#)

Image Credit: ICEHOTEL



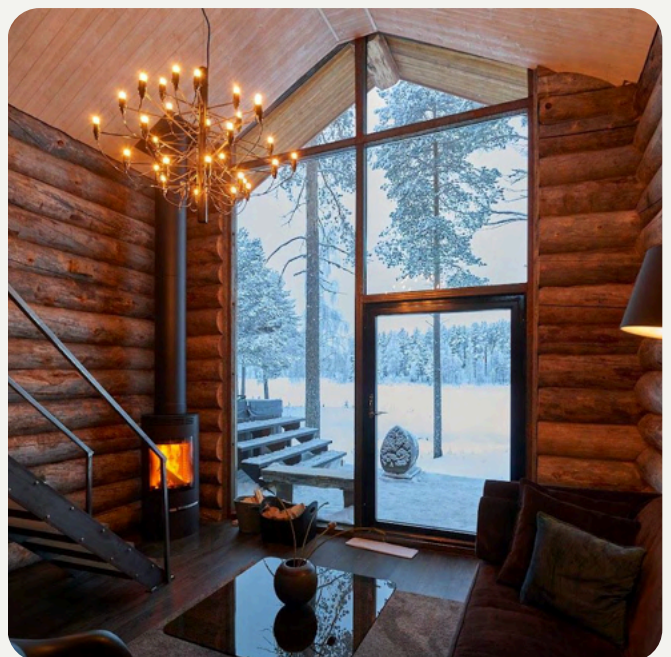
ARCTIC RETREAT

📍 GUNNARSBY, SWEDEN

Arctic Retreat is an exclusive eco-lodge located in the serene forests of Gunnarsbyn, Swedish Lapland. The retreat features three traditional log cabins, each thoughtfully designed with modern comforts, including private outdoor hot tubs, en-suite bathrooms, and wood-burning stoves. Large north-facing windows in each cabin provide unobstructed views of the surrounding wilderness, ideal for observing the Northern Lights during winter months.

Dining at Arctic Retreat emphasizes locally sourced ingredients, with meals served in a cozy on-site restaurant.

The retreat offers a range of private, guided activities tailored to the season. In winter, guests can enjoy dog sledding, snowmobiling, and ice fishing, while summer activities include canoeing, hiking, and foraging. The surrounding forest and proximity to the Råne River enhance the immersive nature experience.



[← Back to index](#)

Image Credit: Arctic Retreat



LOGGERS LODGE

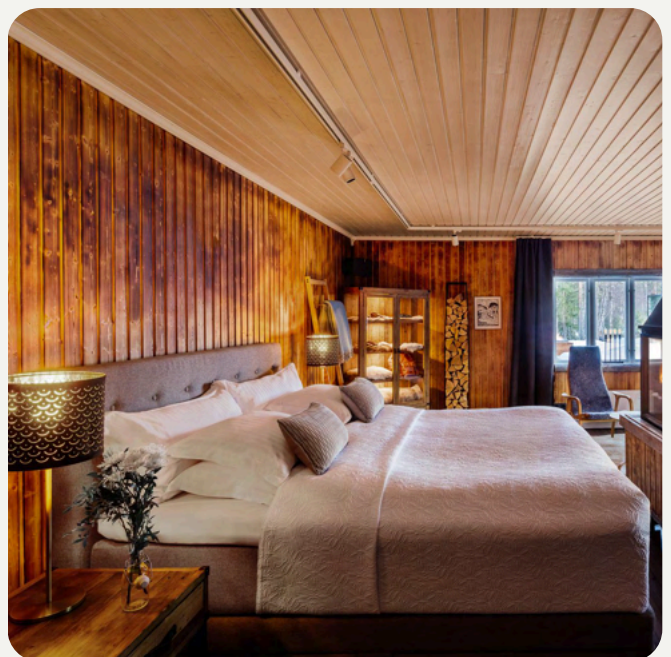
📍 HARADS, SWEDEN

Loggers Lodge, located near Harads in Swedish Lapland, offers an exclusive retreat for couples seeking privacy and a connection with nature. This secluded timber cabin, originally built in the late 1800s, has been thoughtfully renovated to blend traditional charm with modern comforts.

The lodge features a central open fireplace, creating a cozy atmosphere, and includes amenities such as a wood-fired sauna and an outdoor hot tub, both providing forest views. Guests can indulge in traditional Lappish cuisine, prepared by a private chef using local, organic ingredients.

The surrounding nature invites guests to explore with activities such as snowshoeing, ice fishing, and rowing under the midnight sun. The area is rich in wildlife, with the opportunity to spot moose and other animals as they roam the landscape.

With its combination of luxury and natural beauty, Loggers Lodge is an ideal destination for those seeking a unique and immersive experience in the heart of Swedish Lapland.



[← Back to index](#)

Image Credit: Loggers Lodge



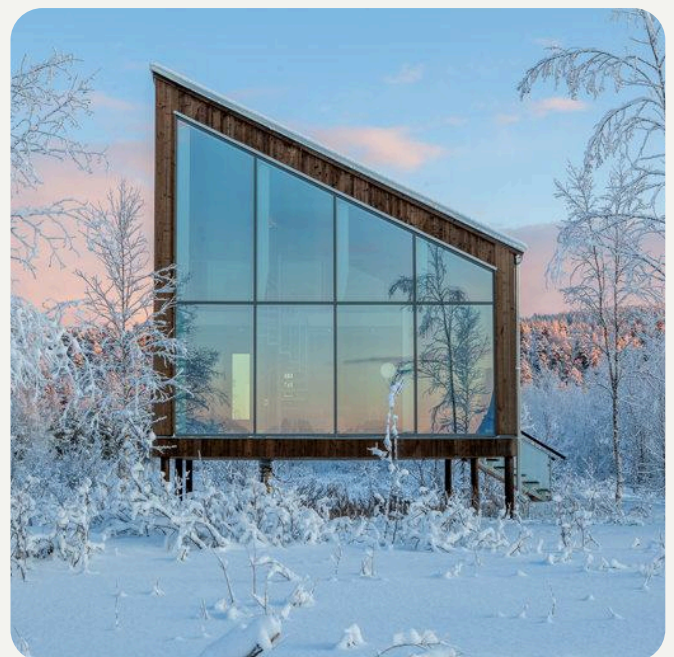
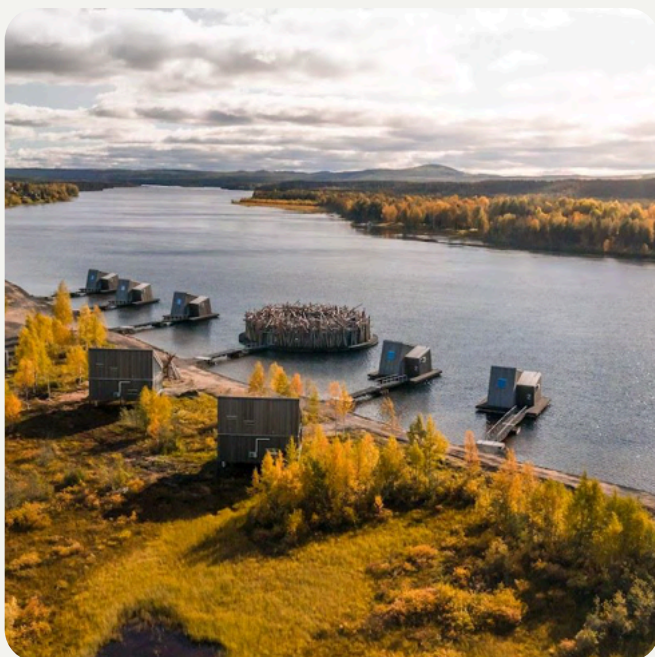
ARCTIC BATH

📍 HARADS, SWEDEN

Arctic Bath is a unique floating hotel and spa located on the Lule River in Swedish Lapland, near the village of Harads. Designed to blend seamlessly with the surrounding natural landscape, the hotel takes inspiration from the region's timber-floating heritage. The central circular building, resembling a bird's nest, houses the spa facilities, while six floating cabins and six land cabins offer serene accommodations with panoramic views of the river and forest. The hotel's wellness facilities include a variety of saunas, a cold bath sourced from the river, and a hot bath, all designed to connect guests with the natural elements.

The on-site restaurant serves locally inspired cuisine, with dishes made from ingredients sourced from the surrounding forests and farms. Guests can enjoy outdoor activities such as snowshoeing, dog-sledding, and river paddling, as well as wildlife spotting opportunities, including moose and reindeer.

Arctic Bath combines luxury, sustainability, and a deep connection to nature, making it an ideal destination for relaxation and adventure in the heart of Swedish Lapland.



[← Back to index](#)

Image Credit: Arctic Bath



TREEHOTEL

📍 HARADS, SWEDEN

Treehotel, located in the village of Harads in Swedish Lapland, offers a one-of-a-kind lodging experience, combining innovative architecture with a deep connection to nature. Situated just south of the Arctic Circle, the hotel features a collection of unique tree rooms, each designed by different Scandinavian architects.

These rooms are suspended 4 to 6 meters above the ground, offering panoramic views of the surrounding forest and the Lule River. Guests can relax in the hotel's sauna or enjoy a hot tub by the river, both providing tranquil views of the surrounding nature.

The area offers a wide range of activities such as hiking, skiing, fishing, and cycling, allowing guests to fully immerse themselves in the pristine wilderness.

The on-site restaurant serves inventive, locally inspired cuisine, showcasing the rich flavours of Swedish Lapland.



[← Back to index](#)

Image Credit: Treehotel



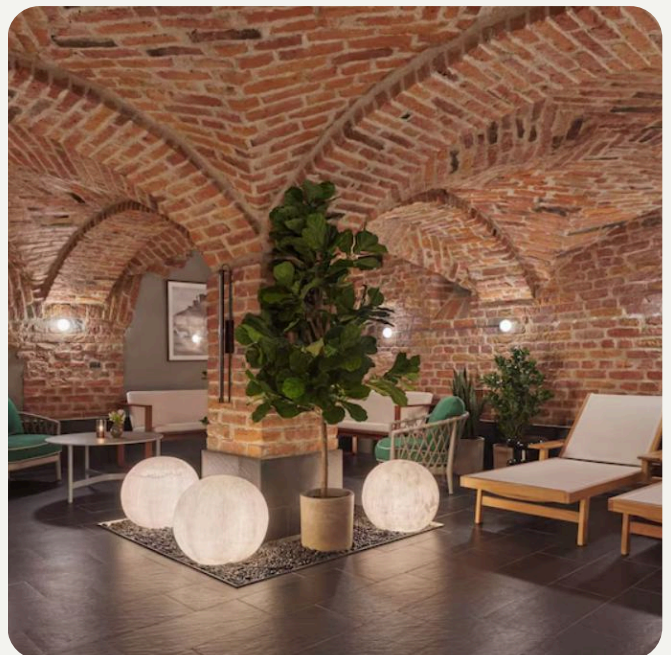
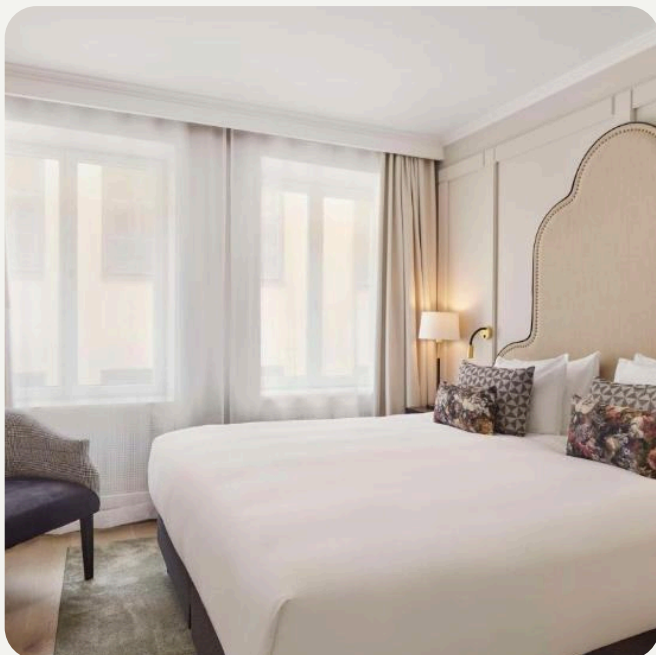
HÔTEL REISEN

📍 STOCKHOLM, SWEDEN

Hotel Reisen is a distinguished property located in Stockholm's historic Old Town (Gamla Stan), offering an exceptional blend of timeless elegance and modern comfort. Situated just a short walk from the Royal Palace, the hotel is housed in five meticulously restored 17th-century buildings, providing guests with a unique opportunity to experience the charm of Stockholm's history while enjoying contemporary amenities.

Many rooms feature stunning views of the water, enhancing the atmosphere of this central location.

The hotel's restaurant offers a refined dining experience, with a menu that combines Swedish and French-inspired cuisine, crafted from fresh, locally sourced ingredients. In addition, Hotel Reisen boasts a comprehensive wellness area, including a spa, cold pool, sauna, and fitness center, allowing guests to relax and rejuvenate during their stay.



[← Back to index](#)

Image Credit: Hôtel Reisen

SIGNATURE RESORTS IN DENMARK





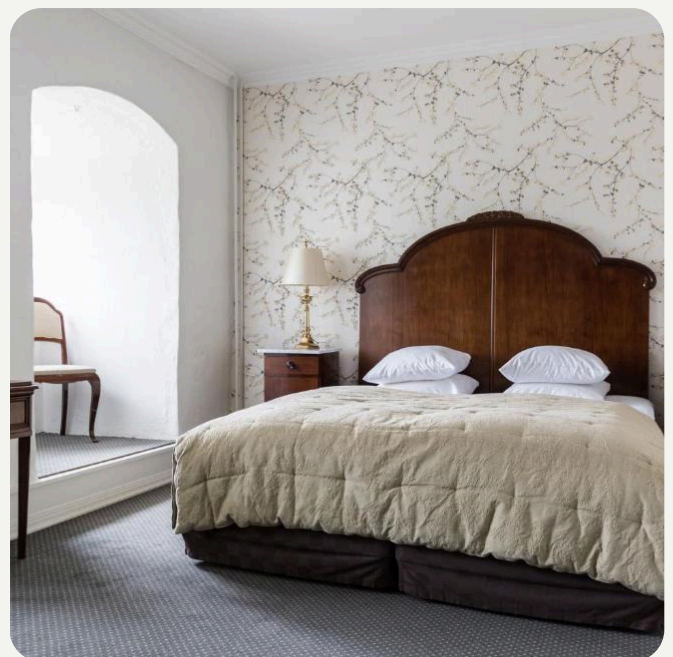
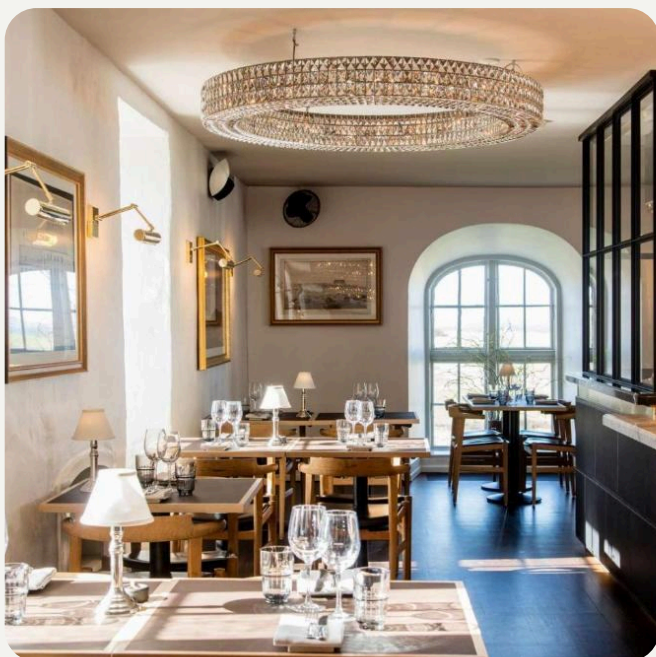
DRAGSHOLM SLOT

📍 HØRVE, DENMARK

Dragsholm Slot, located in Hørve on the Odsherred Peninsula, is one of Denmark's oldest castles, with origins dating back to around 1215.

Today, Dragsholm Slot operates as a luxury hotel featuring 41 rooms that blend historical authenticity with modern comforts. The castle is renowned for its culinary offerings, housing two main restaurants: the Michelin-starred Dragsholm Slot Gourmet and the more casual Dragsholm Slot Bistro, both emphasizing locally sourced ingredients.

The castle is situated within the UNESCO-listed Geopark Odsherred, providing guests with opportunities to explore scenic landscapes, including nearby beaches and forests. Activities such as historical tours, hiking, and cycling are available, allowing visitors to immerse themselves in the area's natural beauty.



[← Back to index](#)

Image Credit: Dragsholm Slot



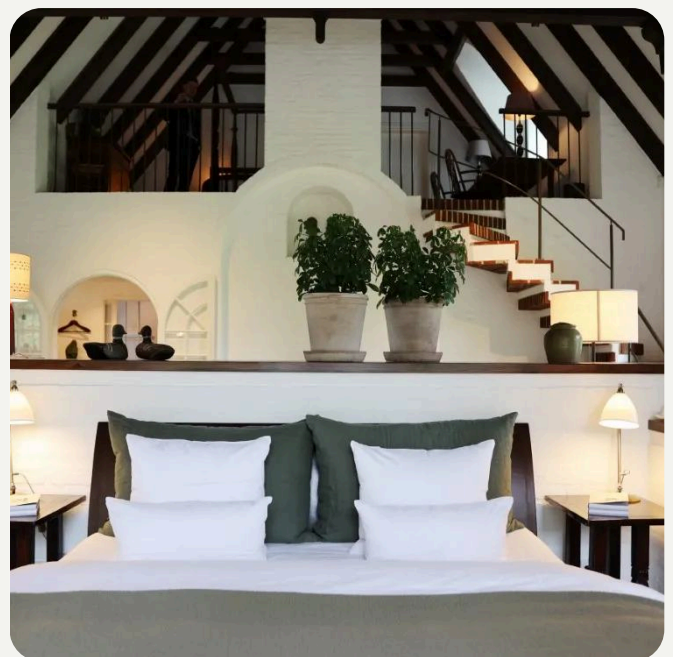
FALSLED KRO

📍 MILLINGE, DENMARK

Falsled Kro is a charming inn located on the southern coast of the island of Fyn, overlooking Helnæs Bay. Housed in a thatched 16th-century building, it is one of Denmark's most renowned countryside hotels, known for its peaceful setting, historic atmosphere, and exceptional gastronomy.

The inn features individually decorated rooms and suites, many with fireplaces, wooden beams, and views of the gardens or coastline. The property combines classic Danish design with warm, personalised service.

Falsled Kro is set on Funen, often called "Denmark's garden island." Known for its rolling farmland, fruit orchards, and coastal scenery, the island has a slower pace of life and a rich cultural heritage. Visitors can explore fairy-tale castles, including the impressive Egeskov Castle, visit the birthplace of Hans Christian Andersen in nearby Odense, or enjoy cycling and hiking through the countryside. The island is also dotted with artisan shops, farm-to-table producers, and small harbours.



[← Back to index](#)

Image Credit: Falsled Kro



RUTH'S HOTEL

📍 SKAGEN, DENMARK

Ruths Hotel is a historic seaside establishment located in the picturesque village of Gammel Skagen (Old Skagen) on Denmark's northern coast. The hotel comprises multiple buildings, each with its own unique character.

Accommodations include rooms, suites, and apartments, all designed with a focus on comfort and Scandinavian elegance. Guests enjoy complimentary breakfast and access to wellness facilities, which feature a heated therapy pool, sauna, steam room, and a range of spa treatments.

Ruths Hotel is ideally situated for exploring Skagen, one of Denmark's most beloved holiday destinations. The town is famous for its unique light, dramatic coastal landscape, and artistic heritage.

In the late 19th century, it became a hub for a group of artists known as the Skagen Painters, who were drawn to the area's natural beauty and special atmosphere. Their work is now celebrated at the nearby Skagens Museum.



[← Back to index](#)

Image Credit: Ruth's Hotel



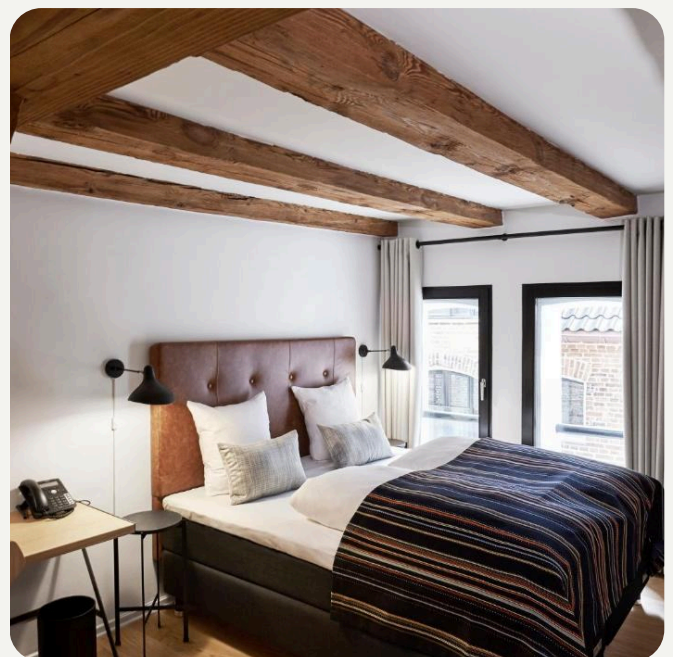
71 NYHAVN

📍 COPENHAGEN, DENMARK

71 Nyhavn Hotel is a refined four-star hotel located directly on the iconic Nyhavn waterfront in central Copenhagen. Exposed wooden beams, original brickwork, and harbour-facing windows give the property a warm, authentic character that reflects Copenhagen's maritime past.

The hotel offers 130 rooms and suites across two buildings – the Red Warehouse and the Yellow Warehouse – each with its own character. While the Red Warehouse features a more contemporary Scandinavian design, the Yellow Warehouse retains more historical features and atmosphere.

The location is one of the hotel's strongest assets. Set at the quiet end of the Nyhavn Canal, 71 Nyhavn Hotel offers both a sense of tranquillity and immediate access to Copenhagen's cultural and historic sights. Landmarks like Amalienborg Palace, The Royal Danish Opera House, Christianshavn, and Strøget shopping street are all within walking distance. Canal boat tours depart just outside the hotel, offering a unique way to experience the city.



[← Back to index](#)

Image Credit: 71 Nyhavn

SIGNATURE RESORTS IN FINLAND





HOTEL MARIA

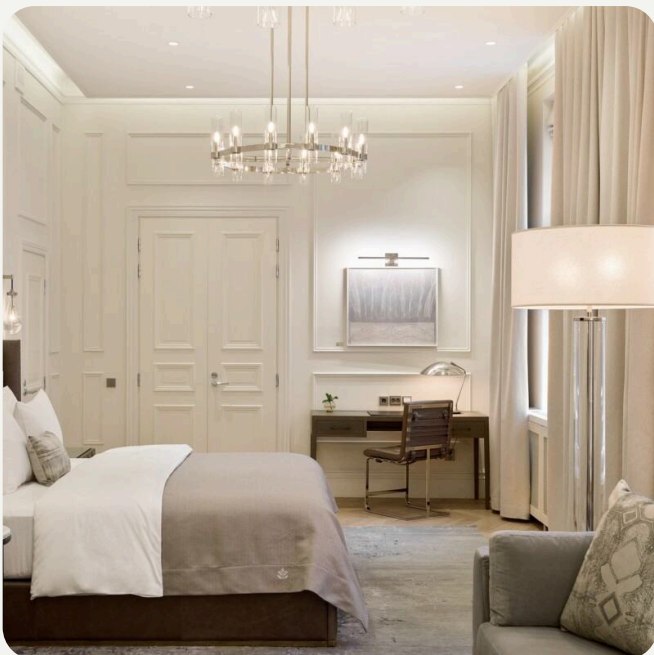
📍 HELSINKI, FINLAND

Opened in late 2023, the hotel occupies four historic buildings from the 19th century, now fully restored to offer a refined blend of Nordic design and modern comfort. The hotel features 117 spacious rooms, including 38 suites—the highest number of suites in Helsinki. Many suites include private saunas or steam rooms, making it a strong choice for guests looking for a high-end wellness experience rooted in Finnish tradition.

A key feature of the hotel is The Maria Spa, which includes Finnish saunas, plunge pools, and a full menu of treatments.

Just outside the city centre, Nuuksio National Park offers forest trails, lakes, and traditional Finnish wilderness—ideal for day trips involving hiking, canoeing, or wildlife spotting. In summer, swimming, berry picking, and picnicking are popular, while winter brings opportunities for snowshoeing or cross-country skiing.

Even within the city, green spaces are abundant. Helsinki boasts an extensive network of parks, forests, and waterfront trails, making it easy to escape into nature without leaving the city.



[← Back to index](#)

Image Credit: Hotel Maria

OPENING IN 2025



KOTONA MANOR

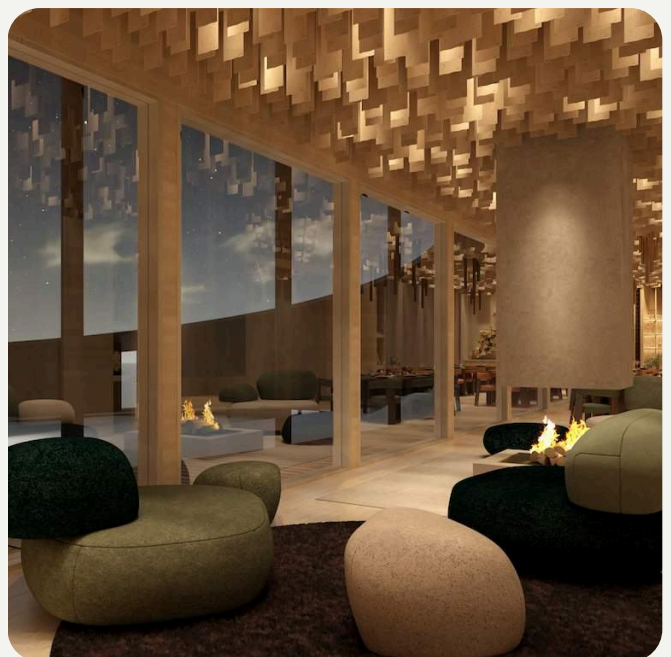
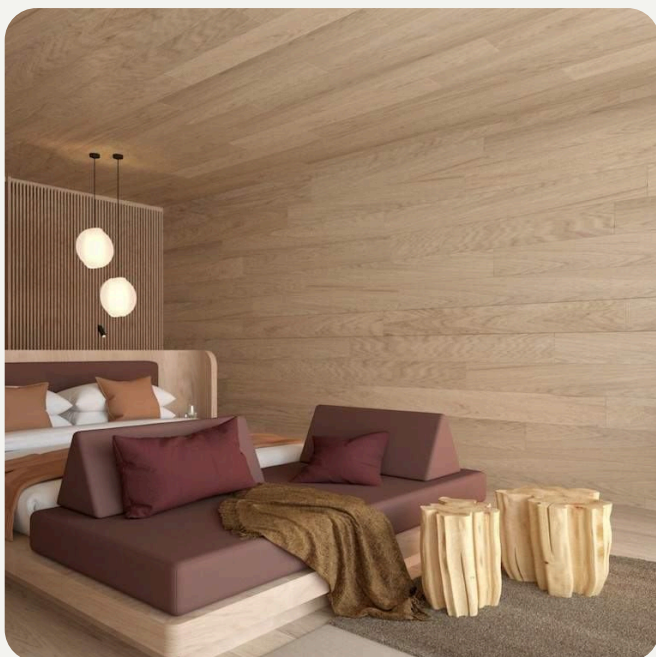
📍 LAKELAND, FINLAND

Kotona Manor is an intimate luxury retreat set to open in summer 2025 in Finland's Lakeland region, near Rantasalmi. Designed for a maximum of 22 guests across 11 suites, the manor offers a peaceful escape surrounded by forests, lakes, and pristine wilderness.

Guests will enjoy full-board dining with ingredients sourced from the region, as well as wellness experiences and guided activities tailored to the seasons—such as canoeing and foraging in summer and autumn, and cross-country skiing or northern lights viewing in winter.

The architecture and interiors reflect Nordic simplicity and elegance, with panoramic views and a strong focus on comfort, privacy, and local design.

The surrounding landscape is characterized by an intricate network of lakes, dense forests, and diverse wildlife, offering guests an immersive experience in the Finnish wilderness. A notable natural attraction nearby is Linnansaari National Park, located within Lake Haukivesi. The park encompasses over 130 islands and is home to the endangered Saimaa ringed seal and majestic ospreys.



← [Back to index](#)

Image Credit: Kotona Manor



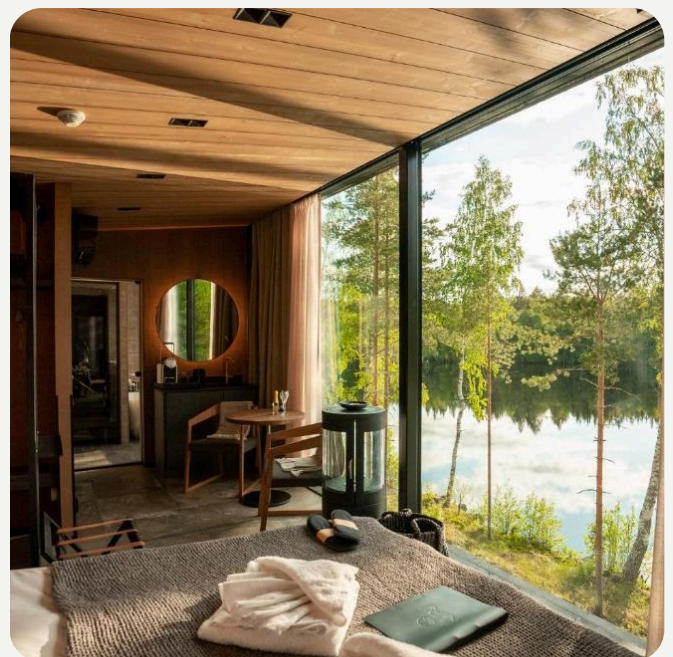
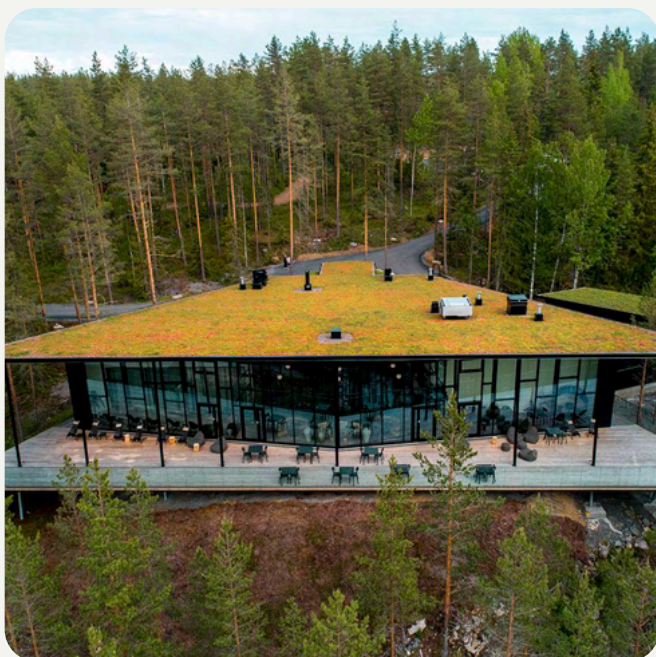
KURU RESORT

📍 RANTASALMI, FINLAND

Kuru Resort is an adults-only luxury retreat located in Rantasalmi, in the heart of Finland's Lakeland region. Surrounded by peaceful pine forests and overlooking the vast Lake Saimaa, the resort offers private villas designed with natural materials, large panoramic windows, and in-room spas with private saunas—creating a calming space for rest and reconnection.

Throughout the year, guests can enjoy a wide range of nature-based activities, including hiking, kayaking, and boat trips in the summer, or snowshoeing and cross-country skiing in winter.

The resort's proximity to Linnansaari National Park offers guests unparalleled access to Finland's pristine natural beauty. The park encompasses over 130 islands scattered across Lake Haukivesi, part of the expansive Saimaa lake system.



[← Back to index](#)

Image Credit: Kuru Resort



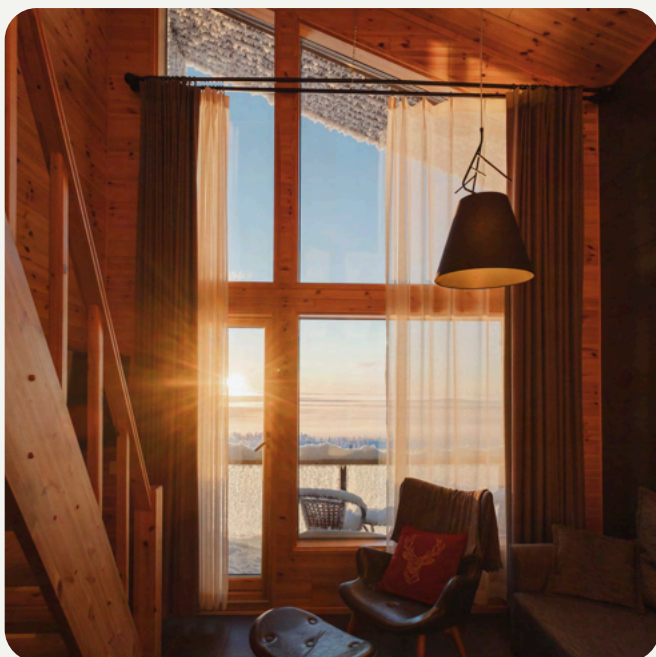
STAR ARCTIC

📍 SAARISELKÄ, FINLAND

Star Arctic Hotel combines modern comfort with direct access to the wild nature of Finnish Lapland. Situated high on the Kaunispää fell, the hotel offers panoramic views over the surrounding forest and tundra landscape.

The hotel features stylish suites and glass cabins designed to bring the outdoors in. Large windows allow guests to enjoy the Arctic sky from the comfort of their beds—whether it's the northern lights in winter or the midnight sun in summer. The interiors are built using natural materials like wood and stone, creating a warm and understated luxury that blends with the environment.

Star Arctic Hotel also offers a restaurant serving local ingredients and a panoramic sauna with wide views of the fells. The outdoor spaces are easily accessible, allowing guests to step straight into nature for a morning hike or an evening snowshoe walk. Guided excursions such as husky safaris, aurora hunts, and visits to Sámi cultural sites are available directly from the hotel.



[← Back to index](#)

Image Credit: Star Arctic



LEVI SPIRIT

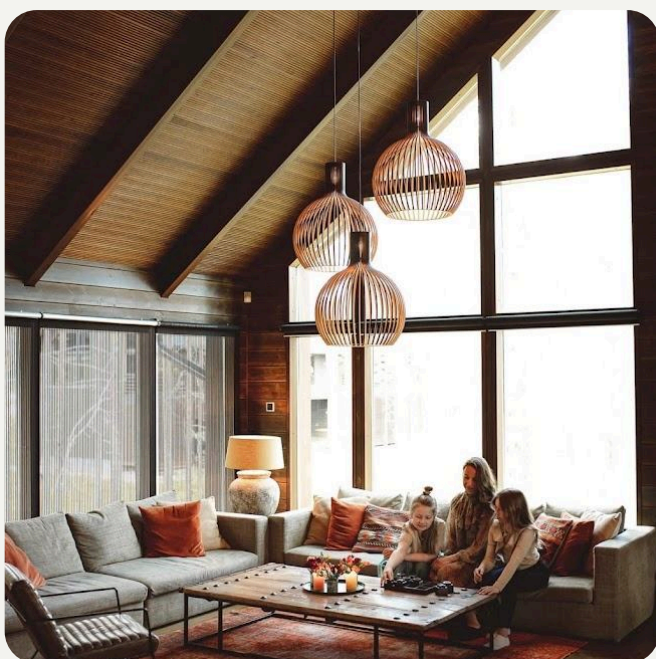
📍 LEVI, FINLAND

Levi Spirit is a collection of premium villas located just outside the Levi resort in Finnish Lapland. Each villa is spacious and built with natural materials, offering a high standard of comfort in a peaceful setting. Large windows provide direct views of the surrounding forest and river, creating a close connection to nature.

Inside, guests have access to private saunas, fireplaces, jacuzzis, and fully equipped kitchens, making the villas suitable for families, small groups, or travellers seeking privacy. Despite the quiet location, the ski slopes, restaurants, and services of Levi are only a short drive away.

The location provides guests with direct access to diverse natural landscapes. The area features dense forests, open fells, and the flowing Ounasjoki River.

In winter, the surroundings are covered in snow, offering opportunities for cross-country skiing and snowmobiling. The proximity to the river allows for activities like fishing and stand-up paddling during warmer months. The region is also known for its clear skies, making it suitable for observing the Northern Lights.



[← Back to index](#)

Image Credit: Levi Spirit



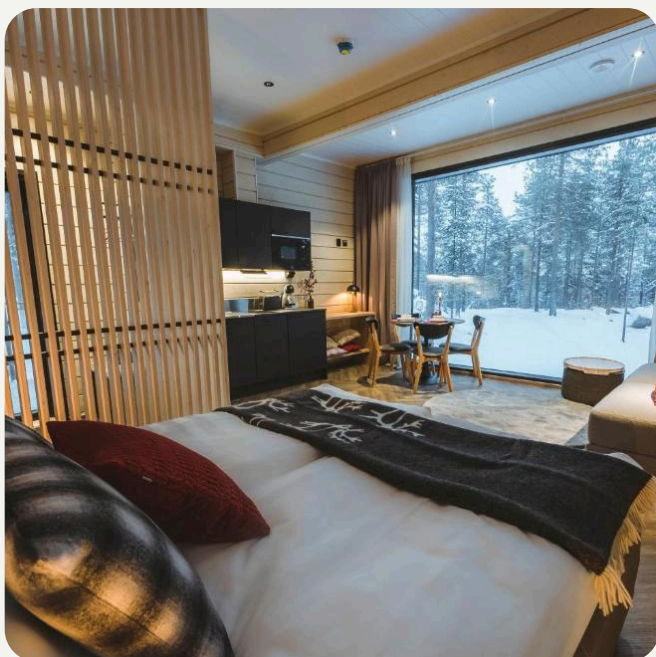
INVISIBLE FOREST LODGE

📍 ROVANIEMI, FINLAND

Invisible Forest Lodge is a boutique accommodation located less than a 10-minute drive from Rovaniemi town center in Finnish Lapland. The lodge offers 13 boutique suite cabins, each measuring 40 square meters and equipped with a private sauna, hot tub, and kitchen.

For guests seeking a unique experience, the lodge provides seven Aurora Hut igloos situated under the northern lights. Additionally, there is a Luxury Log Villa and a cozy Log Cabin available for those desiring a traditional Lappish stay.

North of Rovaniemi, the Arctic Circle Hiking Area encompasses sites like Vikaköngäs and Vaattunkiköngäs, offering well-maintained trails that traverse pristine forests and cross suspension bridges over flowing rapids, providing opportunities for both short walks and extended hikes. Additionally, the region's clear skies and minimal light pollution make it a favorable location for observing the Northern Lights during the darker months.



[← Back to index](#)

Image Credit: Invisible Forest Lodge



OPENING IN 2025

JÄNKÄ RESORT

📍 YLLÄS, FINLAND

Jänkä Resort Ylläs is a luxury retreat set to open in late 2025 in the heart of Finnish Lapland, near Ylläs Fell. Surrounded by forest, lakes, and open fells, the resort will feature 13 premium villas, each with floor-to-ceiling windows, private saunas, and outdoor hot tubs.

The villas are positioned to offer views of the lake, forest, ranch, or fell, with the chance to see the Northern Lights in winter.

An on-site ranch with horses, reindeer, and sled dogs will offer guided activities rooted in local tradition. Designed with sustainability in mind, the resort uses Finnish materials and geothermal heating, creating a peaceful, low-impact base for exploring Lapland's nature year-round.



[← Back to index](#)

Image Credit: Jänkä Resort

OPENING IN 2025



WILDERNESS HOTEL SAARISELKÄ

📍 SAARISELKÄ, FINLAND

Wilderness Hotel Saariselkä is a new resort opening in December 2025, located just outside the village of Saariselkä in Finnish Lapland. Surrounded by the untouched wilderness of the Urho Kekkonen National Park, the area offers a unique Arctic landscape of snow-covered fells, dense pine forests, frozen lakes, and open tundra. This peaceful environment changes dramatically with the seasons—from the soft colours of the polar night and dancing Northern Lights in winter to the midnight sun and vibrant greenery in summer.

The location is ideal for outdoor activities like cross-country skiing, snowshoeing, and hiking, with direct access to marked trails that begin just outside the door. Reindeer are often seen wandering through the forest, and the silence of the landscape offers a deep sense of stillness and space. The resort's design and setting are meant to help guests connect with nature while enjoying the comfort of spacious log villas complete with saunas, fireplaces, and outdoor jacuzzis.



← [Back to index](#)

Image Credit: Wilderness Hotel Saariselkä



SANTAS CHALET RAKKA

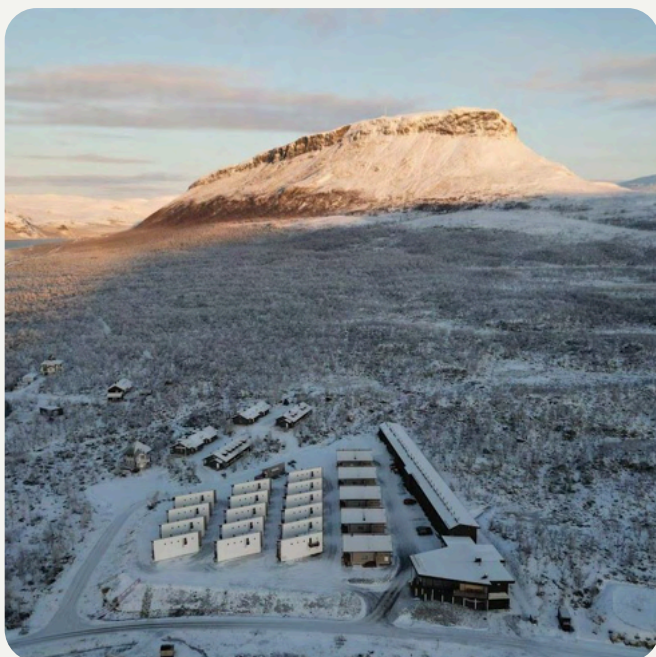
📍 KILPISJÄRVI, FINLAND

Santa's Chalet Rakka is located in the peaceful wilderness of Kilpisjärvi in Finnish Lapland, offering guests direct views of surrounding fells and untouched Arctic nature. The chalet features spacious apartments and cabins, built from natural materials and equipped with comfortable furnishings, fireplaces, and private saunas.

Each unit provides privacy and comfort, ideal for families, couples, or small groups seeking a secluded getaway. The accommodation blends effortlessly into its natural surroundings, providing easy access to outdoor experiences.

The hotel is surrounded by dramatic Arctic scenery, the chalet offers views towards snow-covered fells, expansive tundra landscapes, and the peaceful shores of Lake Kilpisjärvi.

Guests can discover the unique wilderness through guided hiking trails, snowshoe adventures, and snowmobile excursions, or try traditional activities such as ice fishing. Due to its northern location, Kilpisjärvi offers exceptional opportunities for viewing the Northern Lights, particularly from autumn through spring.



[← Back to index](#)

Image Credit: Santas Chalet Rakka



SIGNATURE RESORTS IN ICELAND



SILICA HOTEL

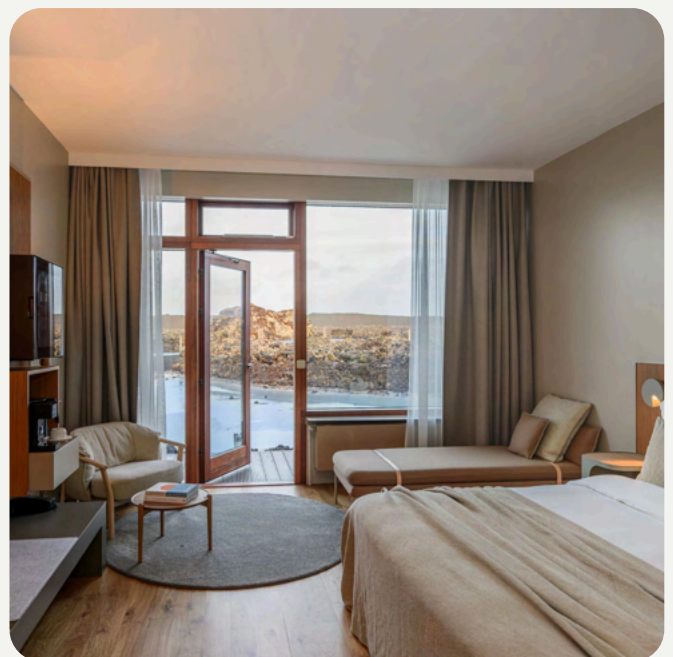
📍 GRINDAVIK, FINLAND

Silica Hotel is located near Iceland's iconic Blue Lagoon, set amidst volcanic landscapes and geothermal waters on the Reykjanes Peninsula. The hotel features minimalist architecture that integrates smoothly with the surrounding lava fields. Guest rooms at Silica Hotel have floor-to-ceiling windows, providing uninterrupted views of moss-covered lava rock and steaming geothermal pools. The interiors emphasise calm and simplicity, designed specifically for relaxation.

A private lagoon, accessible exclusively to hotel guests, offers mineral-rich geothermal waters, allowing visitors to enjoy bathing in peaceful surroundings away from crowds.

Additional hotel facilities include a wellness centre, sauna, and quiet spaces dedicated to relaxation.

Guests at Silica Hotel can explore Iceland's extraordinary volcanic nature, with easy access to nearby geothermal areas, hiking trails, and the rugged coastline of the Reykjanes Peninsula. Hotel staff provide personalised guidance and recommendations, helping guests to discover authentic Icelandic landscapes and experiences.



[← Back to index](#)

Image Credit: Silica Hotel



SAND HOTEL

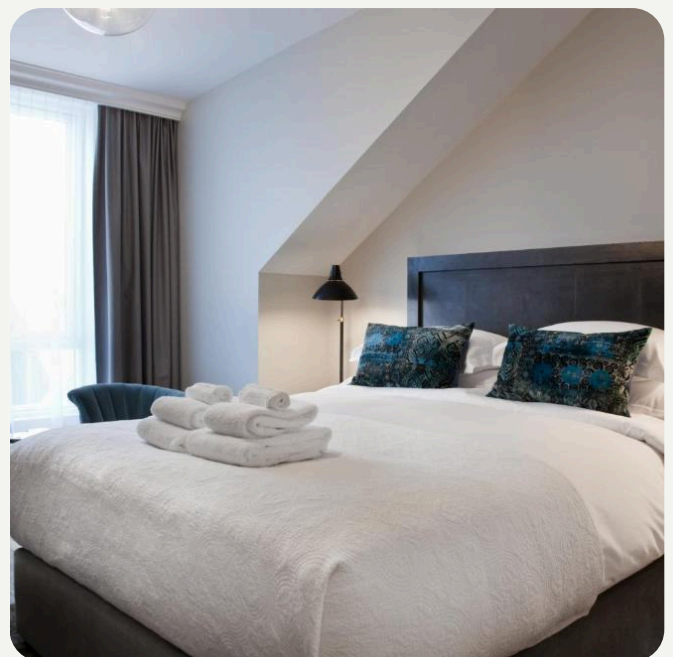
📍 REYKJAVIK, FINLAND

Sand Hotel is located in the heart of Reykjavik, directly on Laugavegur, the city's main shopping and cultural street. Set within walking distance of key attractions such as Hallgrímskirkja Church, Harpa Concert Hall, and Reykjavik's lively cafés and restaurants, the hotel provides easy access to city life and culture.

Guest rooms and suites at Sand Hotel are thoughtfully designed, combining contemporary Icelandic artwork with stylish furnishings.

A highlight of the hotel is the renowned Sandholt Bakery, established in 1920 and located next door. Guests can enjoy breakfast featuring freshly baked breads, pastries, and local ingredients sourced from the bakery itself.

Sand Hotel's central location offers opportunities to easily explore Reykjavik's cityscape as well as its nearby natural surroundings. Staff at the hotel provide attentive service, offering local insights and recommendations to help guests make the most of their stay.



← [Back to index](#)

Image Credit: Sand Hotel



SIGLÓ HÓTEL

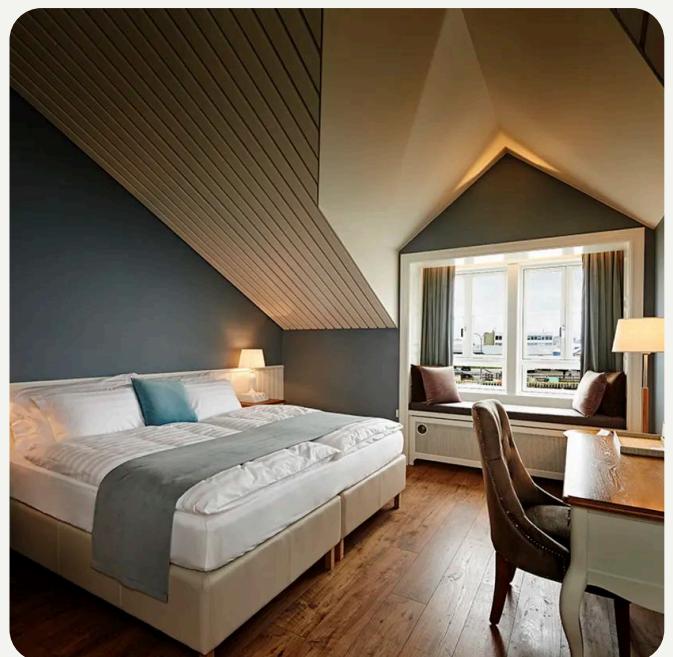
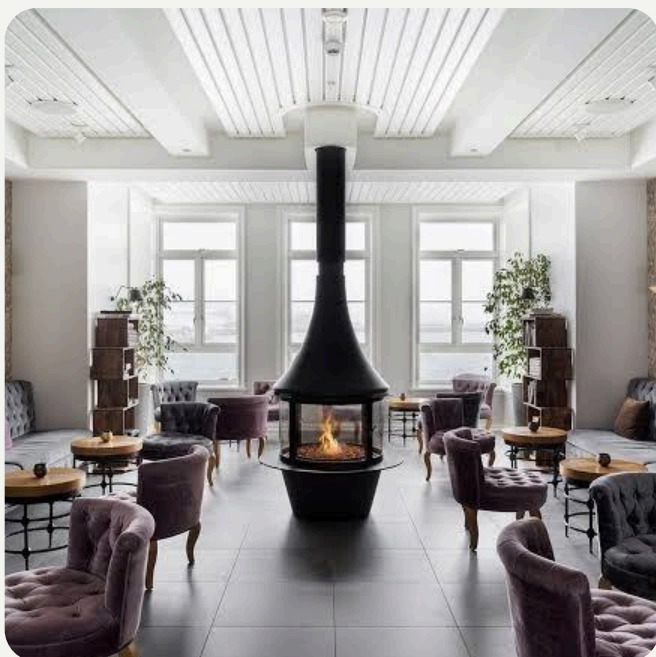
📍 SIGLUFJÖRÐUR, ICELAND

Sigló Hotel is located in the picturesque fishing village of Siglufjörður, on the north coast of Iceland. The hotel sits directly by the village's charming marina, surrounded by mountains, fjord views, and traditional Icelandic architecture.

Guest rooms and suites at Sigló Hotel combine comfortable minimalistic design with modern amenities. Each room offers views towards either the harbour or mountains, with features such as cosy window seats, coffee machines, and contemporary bathrooms.

Sigló Hotel's location is ideal for exploring Iceland's untouched northern nature. Nearby, guests can hike mountain trails, visit scenic viewpoints, or experience the coastline by boat.

Seasonal activities such as whale watching, bird spotting, and skiing in winter further immerse guests in the natural environment.



[← Back to index](#)

Image Credit: Sigló Hótel



TORFHÚS RETREAT

📍 SELFOSS, ICELAND

Torfhús Retreat is a luxury eco-resort located in the heart of Iceland's Golden Circle, surrounded by dramatic natural landscapes including volcanic plains, glaciers, waterfalls, and geothermal springs. Inspired by traditional Icelandic turf houses, the retreat blends into its surroundings with low-profile buildings made from natural materials.

Each guesthouse features a private basalt hot pool fed by geothermal water, offering a relaxing way to take in the views of the wide open sky and raw countryside.

The area is ideal for outdoor activities such as hiking, horseback riding, and visiting nearby sites like Gullfoss waterfall, Geysir hot spring, and Pingvellir National Park. With its remote setting and close connection to nature, Torfhús Retreat offers a peaceful and immersive experience of Iceland's wild beauty.



[← Back to index](#)

Image Credit: Torfhús Retreat

SIGNATURE RESORTS IN GREENLAND





ILIMANAQ LODGE

📍 ILIMANAQ, GREENLAND

Ilimanaq Lodge is situated in the remote village of Ilimanaq, just south of Greenland's UNESCO-listed Ilulissat Icefjord.

The lodge features 15 private cabins, each designed to blend with the surrounding landscape. These two-story cabins offer panoramic views of Disko Bay and passing icebergs through floor-to-ceiling windows. Each cabin includes a private bathroom with modern amenities, and solar panels provide electricity and heating, emphasizing the lodge's commitment to sustainability.

Guests can explore Greenland's unique environment through guided hikes, boat trips to glaciers, or cultural walks in the local community.

Dining at Restaurant Egede, located in one of Greenland's oldest buildings, provides an authentic experience of local cuisine. Ilimanaq Lodge invites travellers to connect with Greenland's remarkable natural beauty and rich cultural heritage in an intimate, eco-friendly setting.



[← Back to index](#)

Image Credit: Ilimanaq Lodge

SIGNATURE RESORTS IN THE FAROE ISLANDS





HOTEL FØROYAR

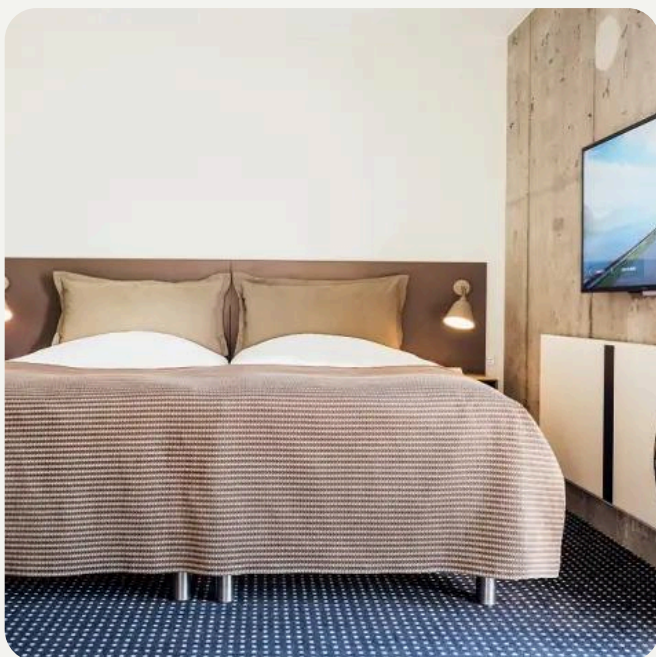
📍 TÓRSHAVN, FAROE ISLANDS

Hotel Føroyar is set on a hillside just outside Tórshavn, offering sweeping views of the city, surrounding mountains, and the North Atlantic Ocean. Designed to blend naturally into the landscape with its traditional grass roof, the hotel provides a quiet retreat within easy reach of the capital.

Rooms and suites are bright and spacious, featuring large windows that frame the dramatic Faroese scenery. Guests can enjoy locally inspired dishes at the hotel's restaurant, relax in the spa with treatments and sauna facilities, or unwind in the café and bar.

The surrounding nature is a defining part of the experience, with easy access to walking trails that lead through open moorland, along the coastline, and into the rugged interior of the islands.

The Faroe Islands are home to thousands of seabirds, including puffins and fulmars, and the ever-changing weather adds a sense of drama to the already striking scenery.



[← Back to index](#)

Image Credit: Hotel Føroyar

SIGNATURE RESORTS IN THE BALTICS





HOTEL TELEGRAAF

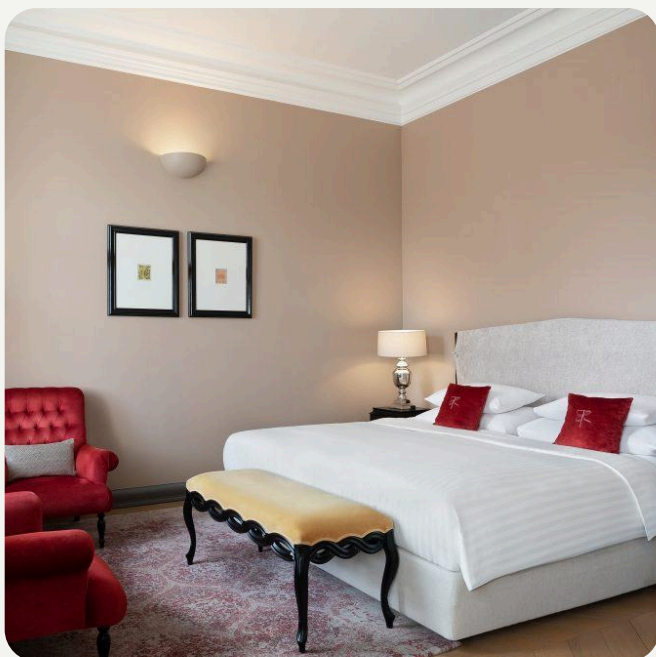
📍 TALLINN, ESTONIA

Hotel Telegraaf is situated in the heart of Tallinn's Old Town, housed in a historic building dating back to 1878 that once served as the city's Central Telegraph Office. This five-star hotel seamlessly blends its rich history with modern luxury, offering 83 elegantly appointed rooms and suites designed in a contemporary style with Art Deco touches.

Guests can enjoy the on-site Telegraaf Spa, featuring an indoor swimming pool, jacuzzi, sauna, and steam bath. While Tallinn is best known for its medieval Old Town the city is also surrounded by an amazing amount of natural beauty.

Just beyond the city centre, pine forests, lakes, and coastal landscapes offer opportunities for peaceful outdoor experiences.

To the east lies Kadriorg Park, a vast green space with landscaped gardens, woodlands, and walking paths leading to the seafront. Along the Gulf of Finland, the coastline features quiet beaches, rocky shores, and scenic viewpoints, ideal for leisurely walks or cycling.



[← Back to index](#)

Image Credit: Hotel Telegraaf



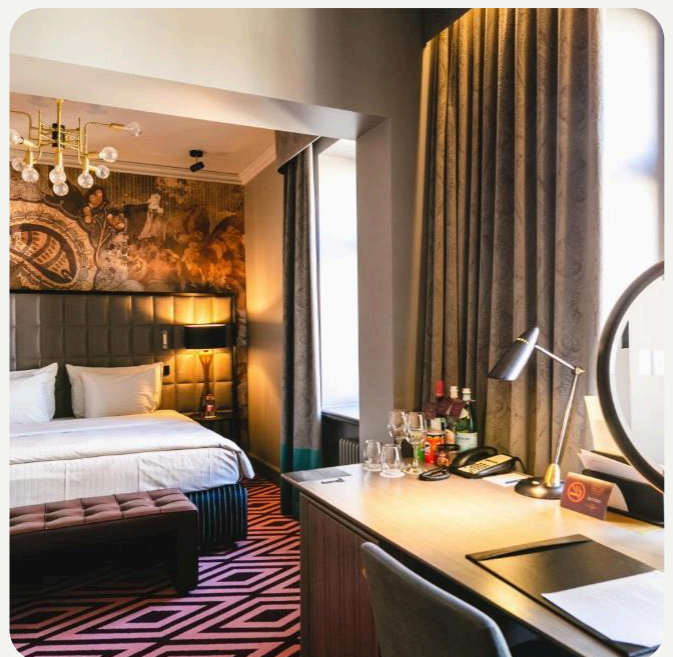
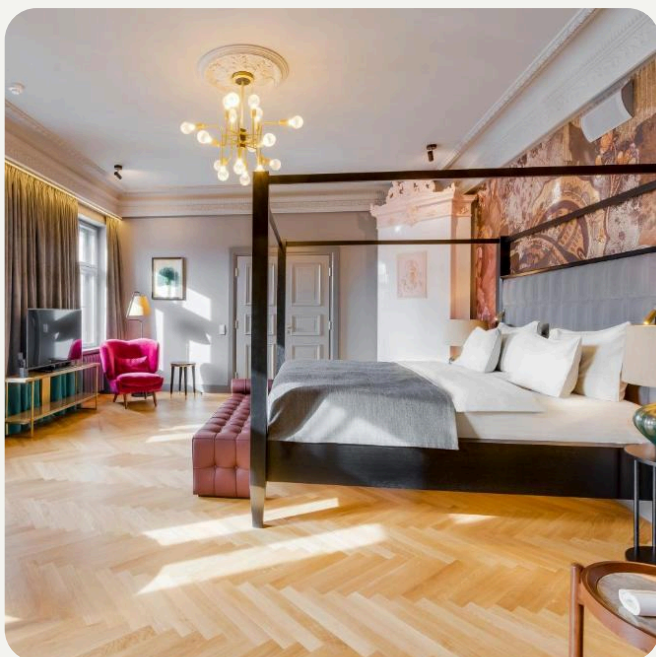
GRAND POET HOTEL

📍 RIGA, LATVIA

Grand Poet Hotel by Semarah is a five-star design hotel located in the centre of Riga, directly across from Bastion Hill Park and just a short walk from the Freedom Monument and the historic Old Town. The hotel features stylish rooms and suites, many offering views of the park or the city, and is thoughtfully designed with artistic details and modern comforts.

Guests can enjoy a full-service spa with an indoor pool, sauna, and steam bath, as well as dine at the hotel's Snob restaurant, which offers contemporary cuisine in an inviting atmosphere.

Riga itself is surrounded by nature, with tree-lined boulevards, green parks, and the Daugava River flowing through the city. Bastion Hill Park, right outside the hotel, offers quiet walking paths, landscaped gardens, and canal-side benches ideal for a peaceful break. Just beyond the city centre, visitors can explore pine forests, beaches along the Gulf of Riga, and nature reserves with walking and cycling trails.



[← Back to index](#)

Image Credit: Grand Poet Hotel



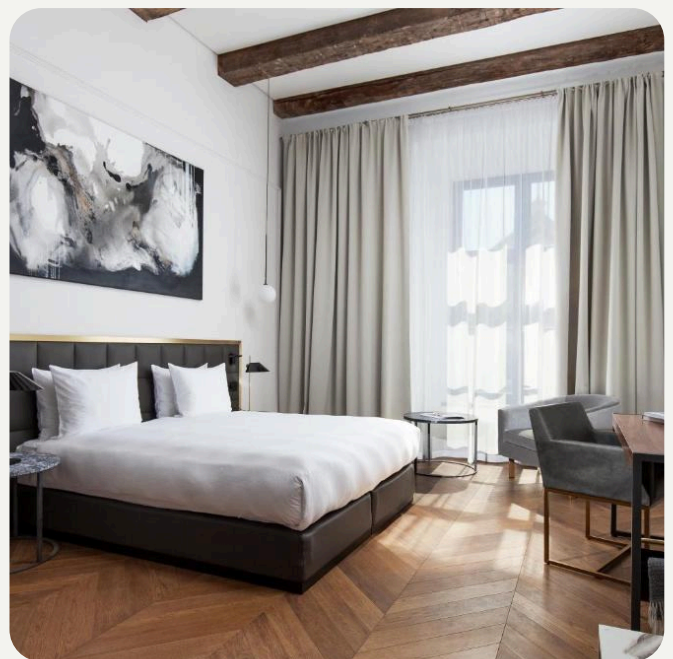
HOTEL PACAI

📍 VILNIUS, LITHUANIA

Hotel Pacai is a five-star boutique hotel situated in the heart of Vilnius' Old Town, housed within a meticulously restored 17th-century Baroque mansion. The hotel offers 104 elegantly designed rooms and suites that seamlessly combine historical charm with modern luxury.

Guests can dine at the on-site restaurant, which emphasizes local ingredients and culinary traditions, or relax in the spa featuring a range of wellness treatments.

The hotel's central location provides easy access to Vilnius' cultural landmarks, including museums, churches, and the Presidential Palace. Nature enthusiasts will appreciate the proximity to several green spaces; Bernardine Garden, located nearby, offers botanical displays and walking paths along the Vilnia River, while Kalnai Park provides panoramic views of the city from its various hills.



[← Back to index](#)

Image Credit: Hotel Pacai