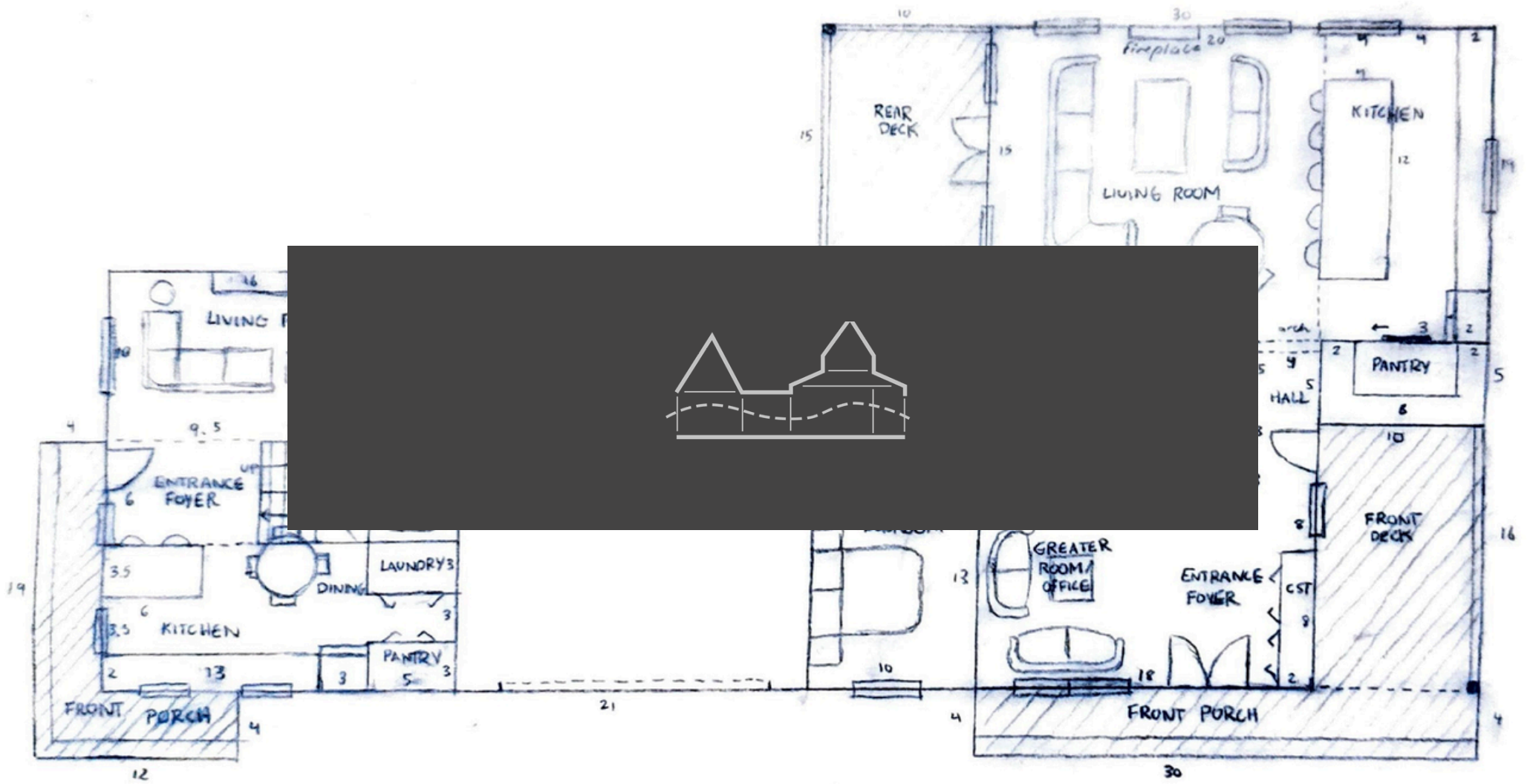
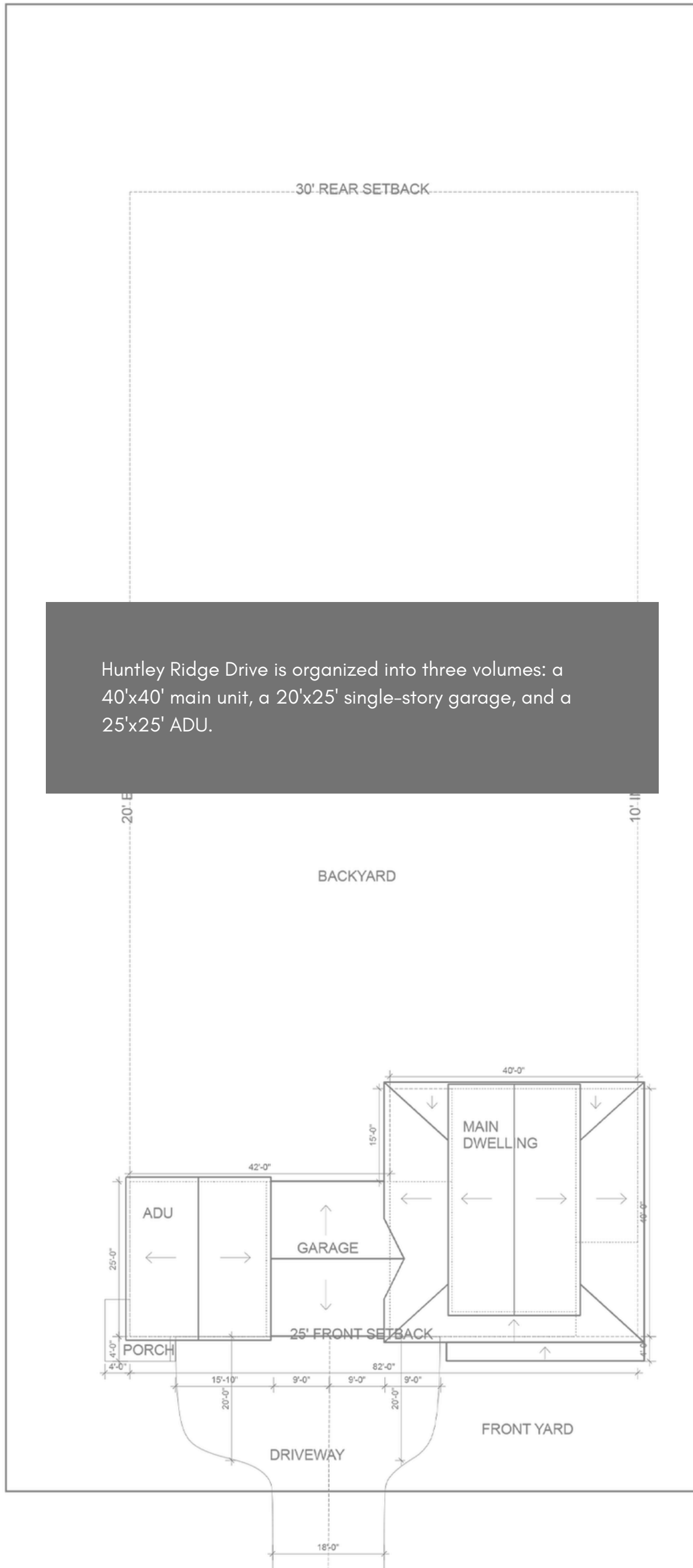


HUNTLEY RIDGE DRIVE





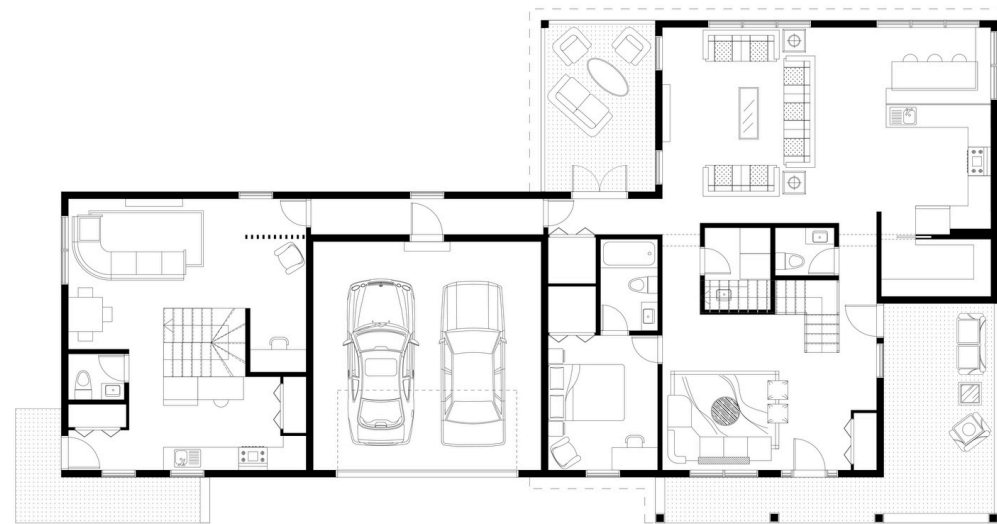
Huntley Ridge Drive is organized into three volumes: a 40'x40' main unit, a 20'x25' single-story garage, and a 25'x25' ADU.

FLOOR PLANS



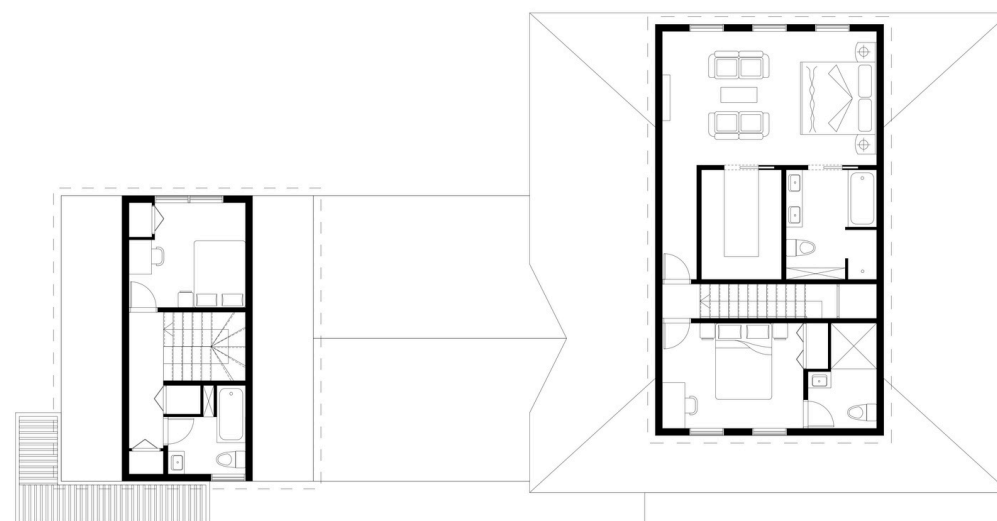
The ADU is accessed through a dedicated wraparound porch and features a U-shaped stair with a spiral landing, a central den, and a vaulted second-story bedroom. The main unit contains layered indoor-outdoor thresholds with front, side, and rear porches. A large glazed breakfast nook and arched transitions lead to living areas filled with light. The upper floor includes a master suite with a walk-in closet and vaulted ceiling.

GROUND FLOOR

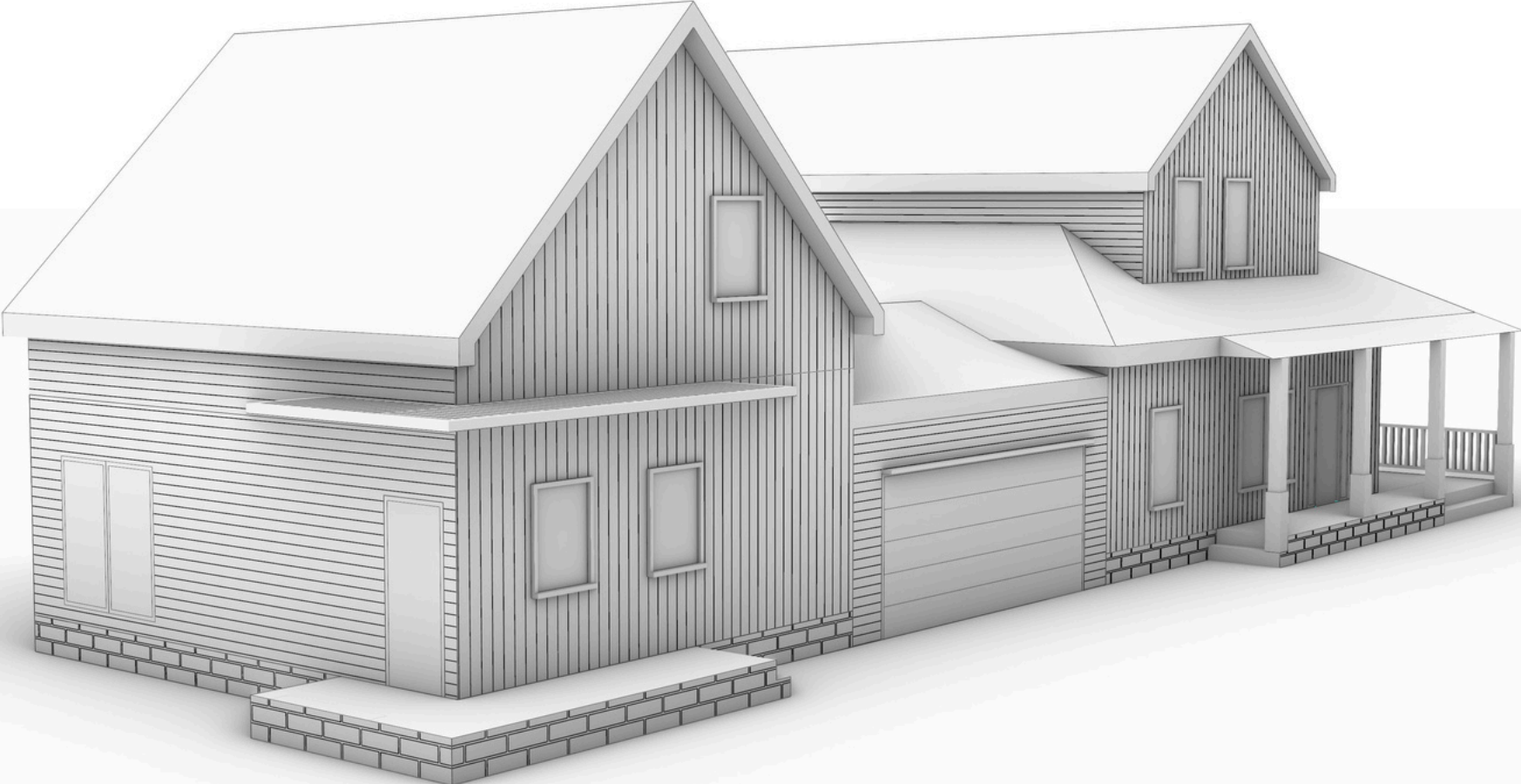
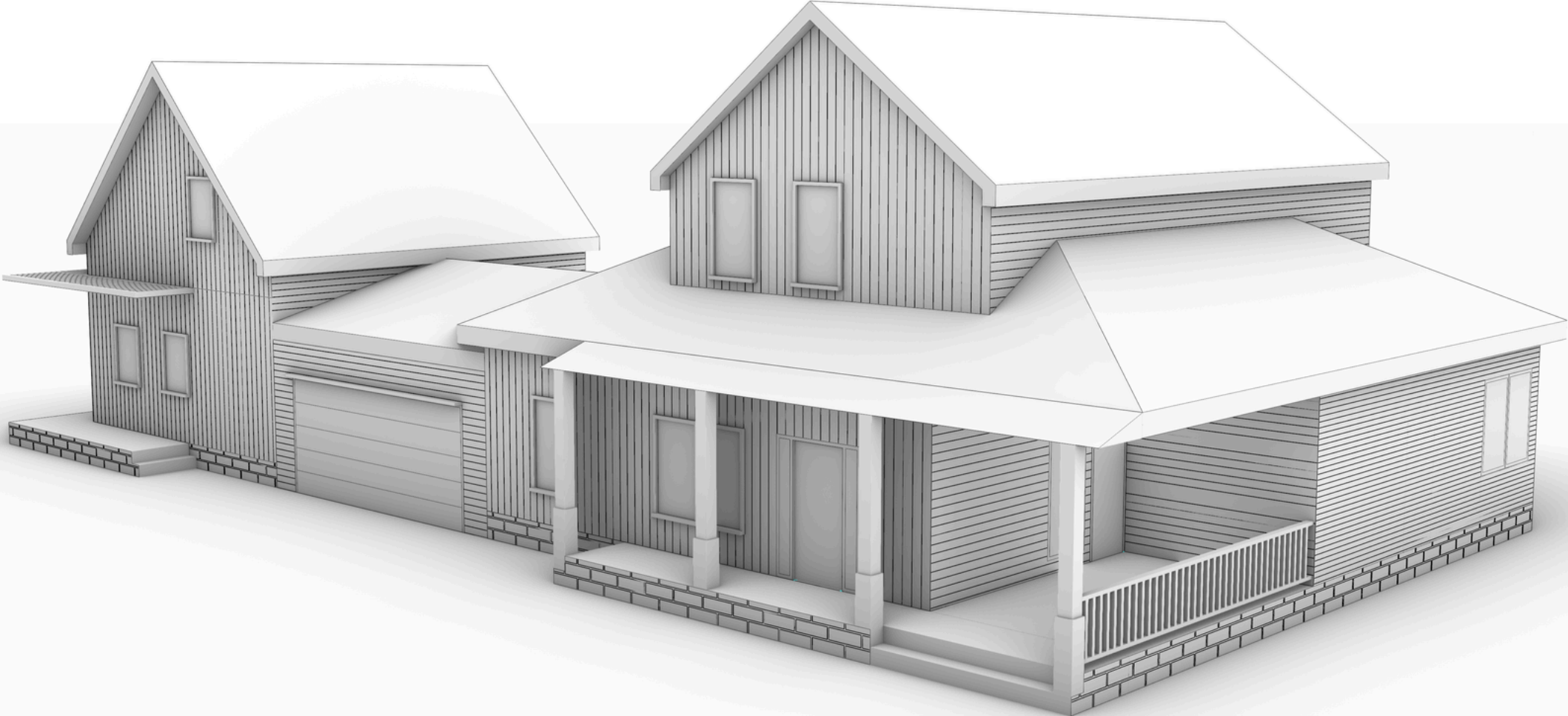


DESIGN with FURNITURE

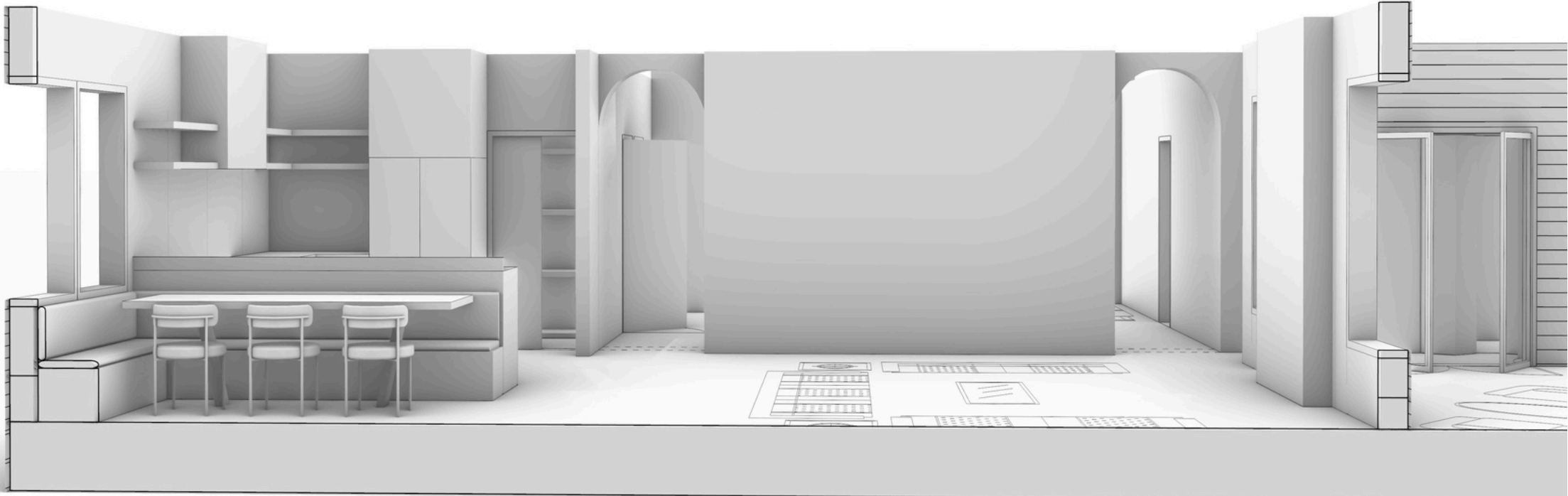
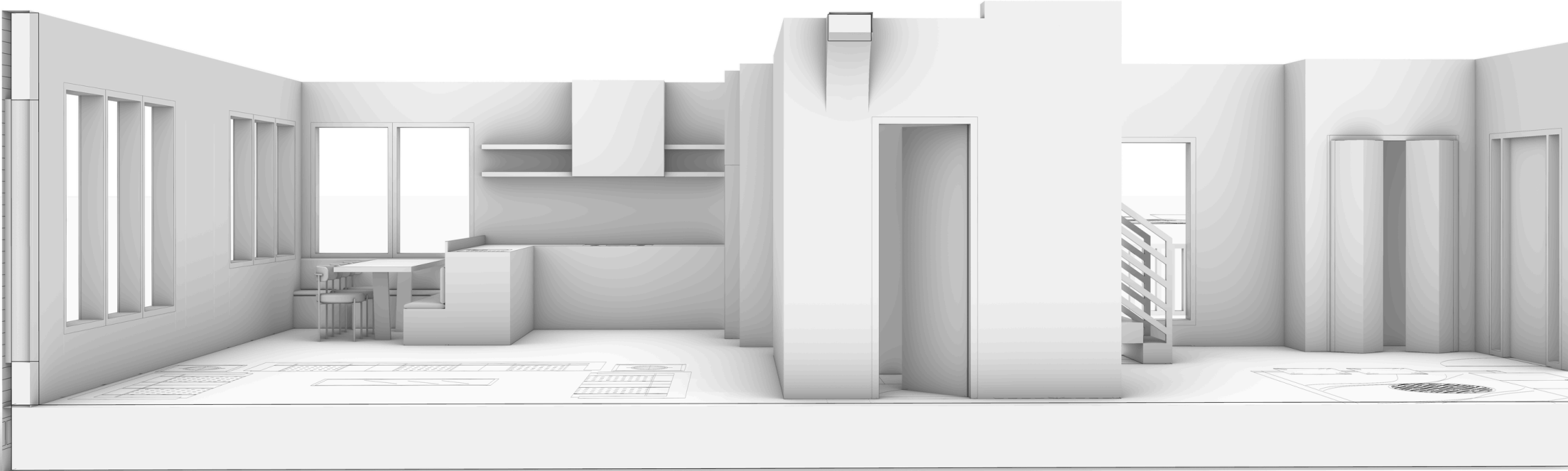
FIRST FLOOR



FACADES

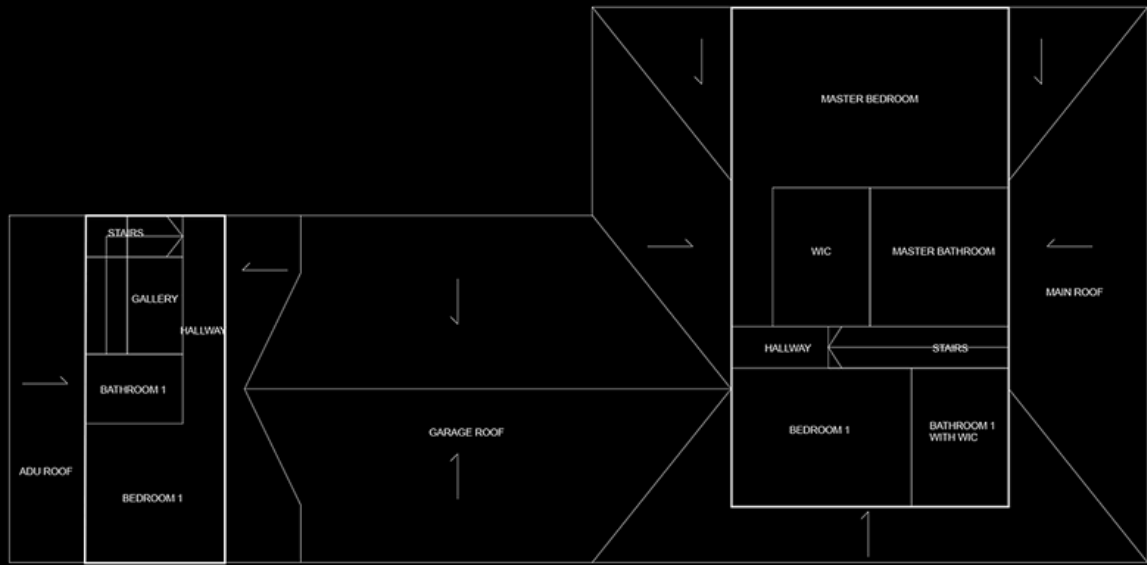
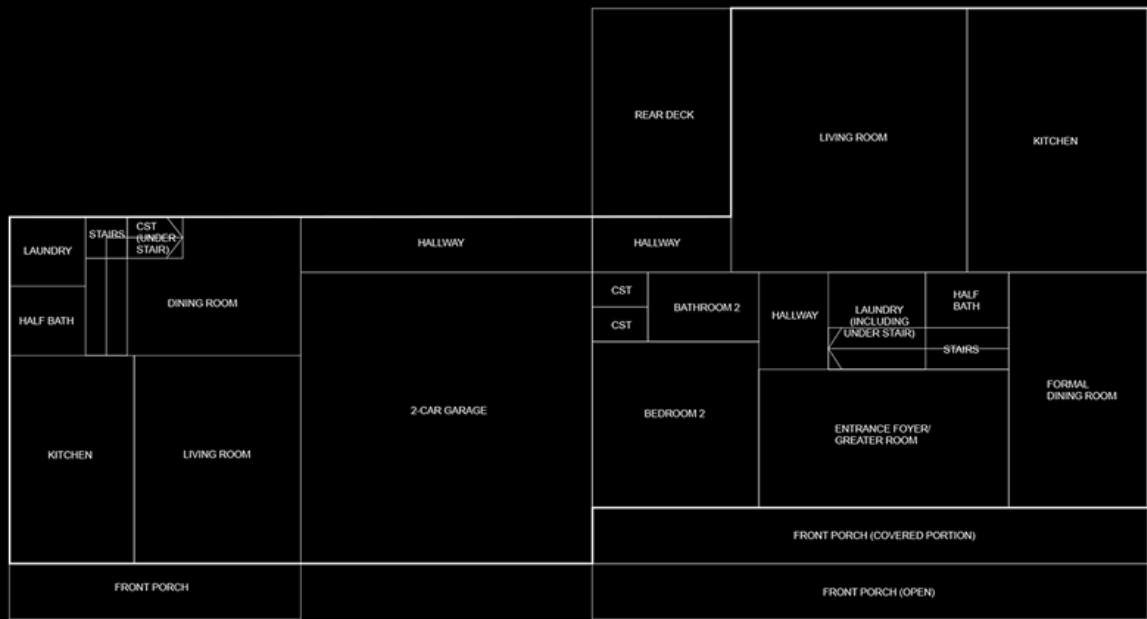
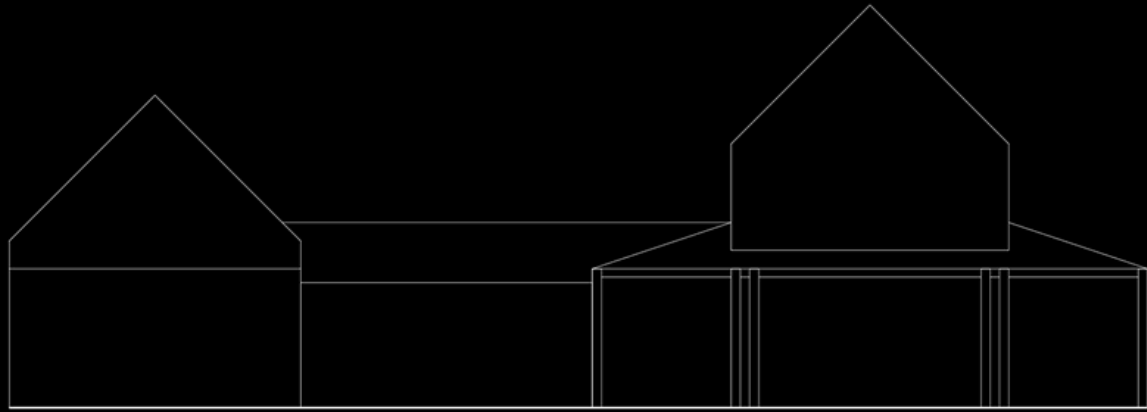


INTERIOR MODEL




DESIGN

The garage links both units and enhances the compound's legibility. Designed for flexibility, the layout accommodates multiple living scenarios: family, rental, or guest use, all while maintaining architectural integrity across the whole site.



CONCLUSION



This design brings everything together as a flexible home that feels connected and balanced. Each volume works on its own and as part of the whole, creating spaces that are bright, practical, and ready for different ways of living.