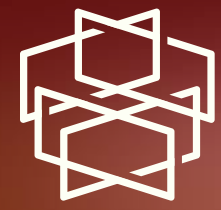


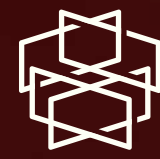


**INFINITE**  
STRUCTURES



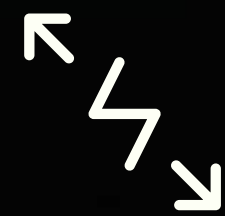
# 2024 UBER ACTIVATION





IS-1 // iCUBE

# INFINITE CUBE



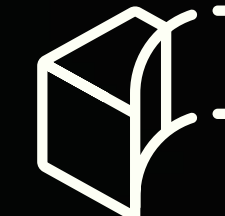
## REVOLUTIONIZES SPACES

We are transforming event and commercial spaces with **INFINITE CUBE**, our innovative, sustainable, and modular building solution.



## DELIVERS QUALITY

We are committed to providing high-quality, customizable units that blend precision engineering with architectural elegance.



## ENHANCES EFFICIENCY

Our mission is to offer flexible, efficient, and environmentally responsible infrastructure that elevates any environment.



## LESS TRUCKING

Able to fit up to 8 units on a single flatbed truck.



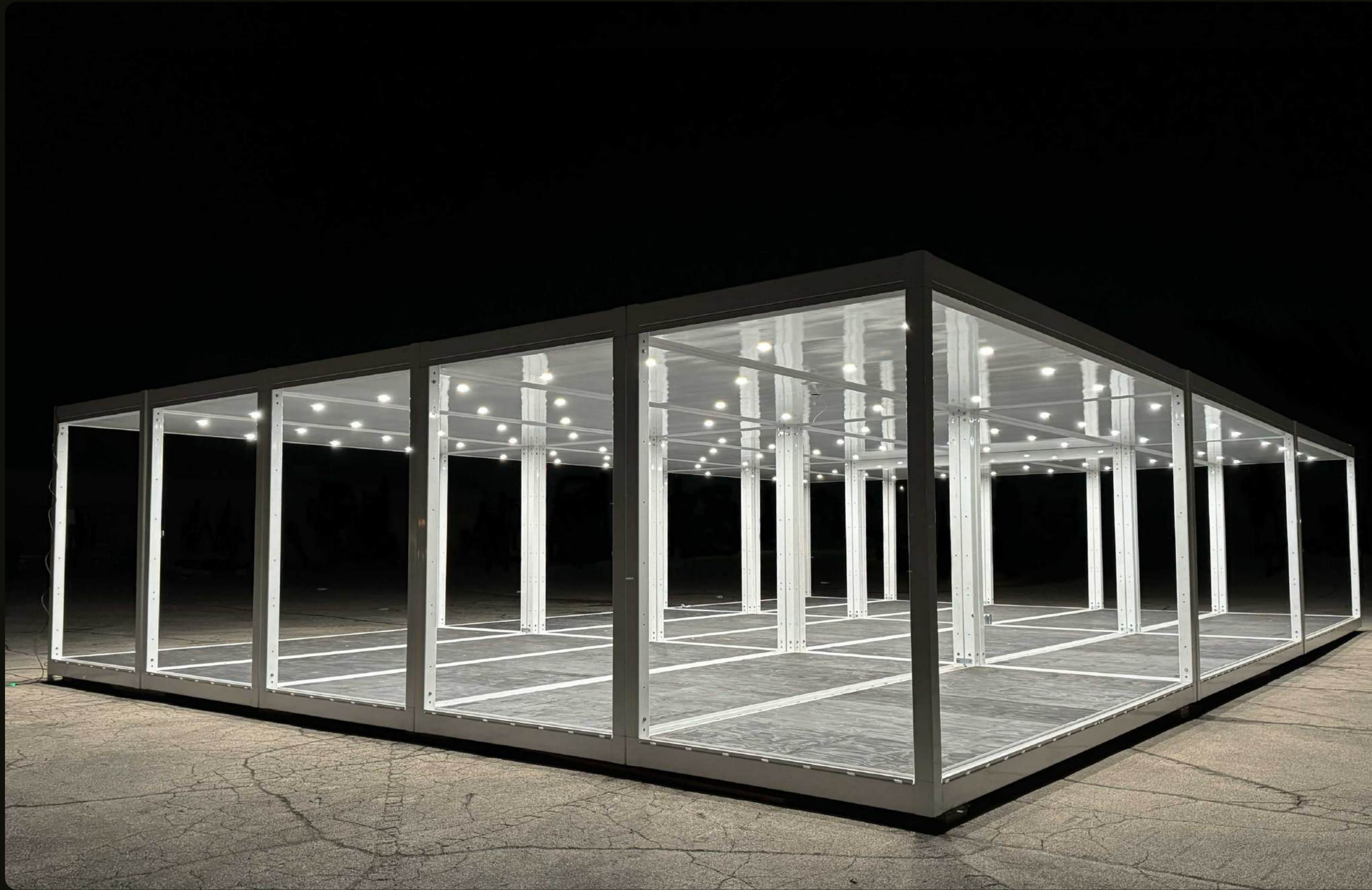
## LESS LABOR

Requires reduced onsite labor, equipped with only a telehandler or small crane.



## FLAT PACK DESIGN

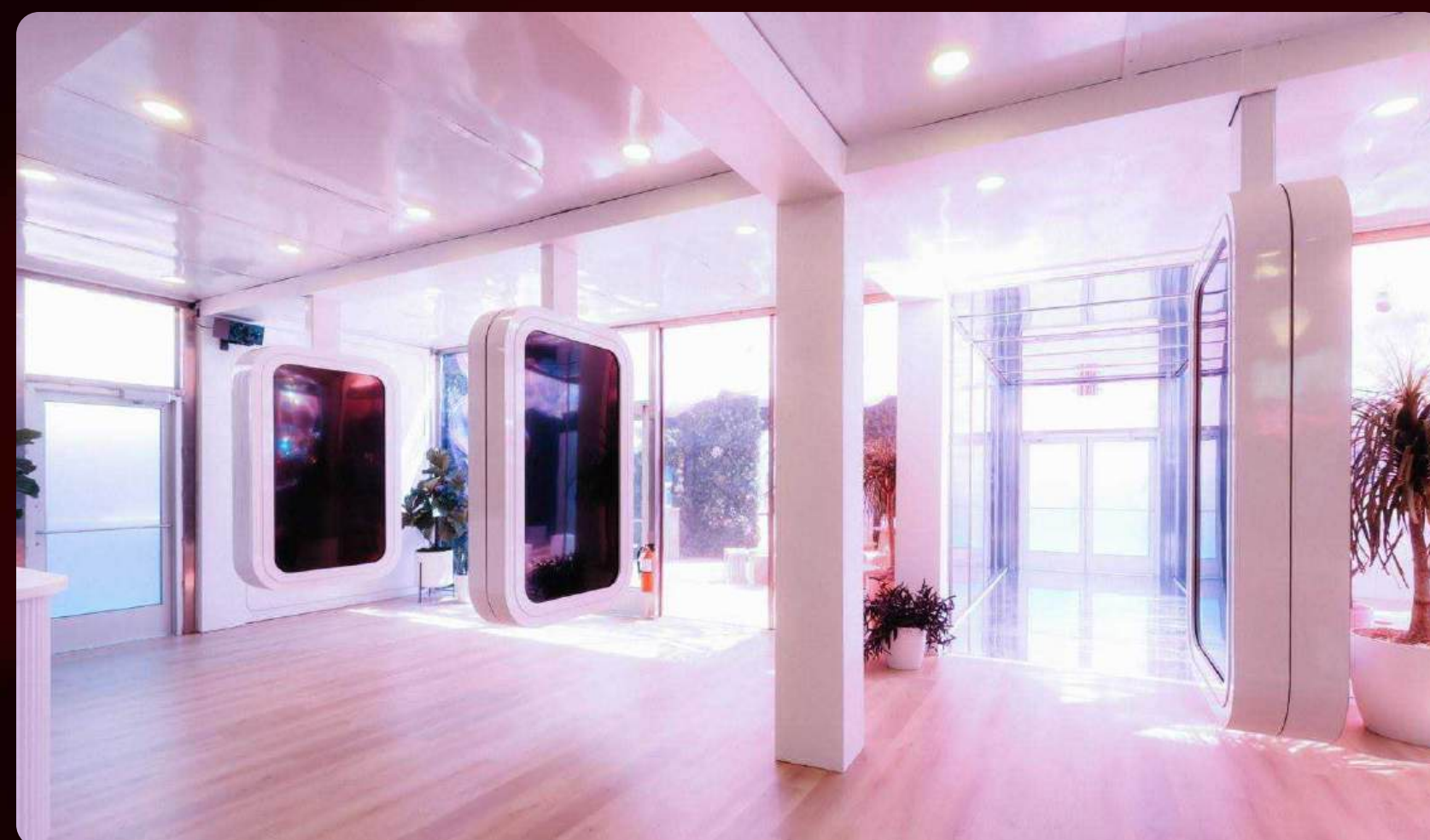
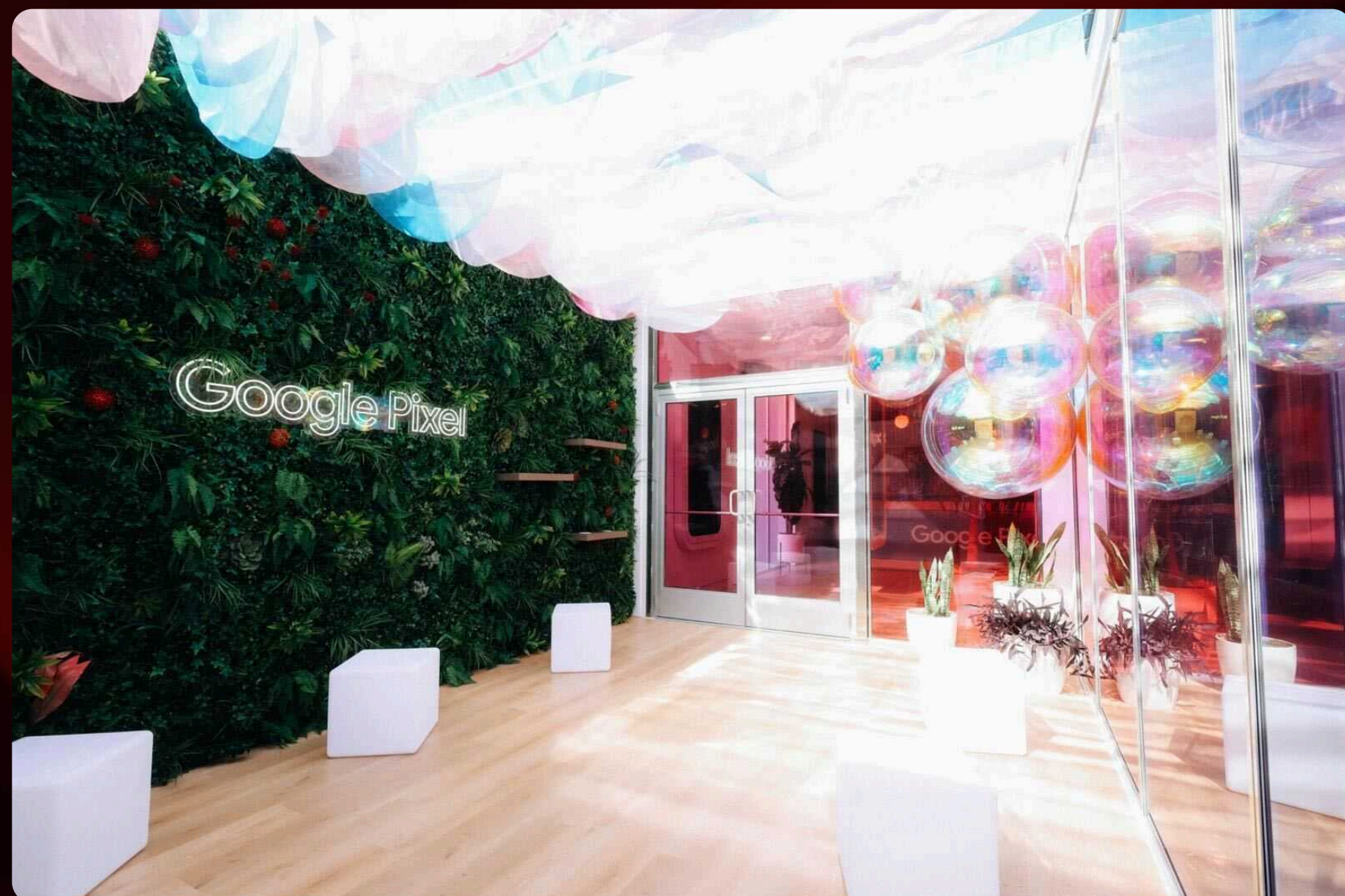
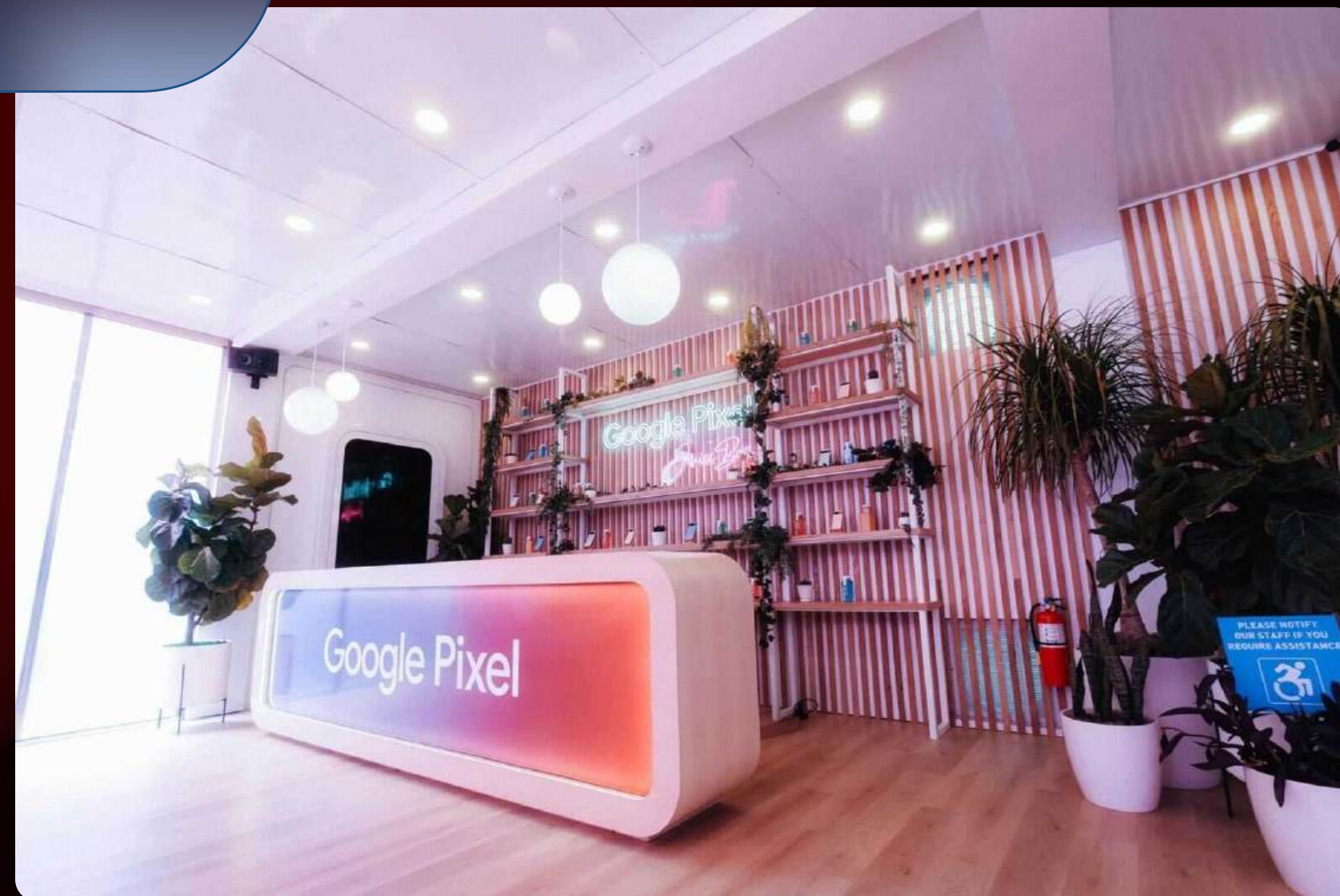
Patented lay-flat system enables fast, flexible delivery.



**INFINITE**  
STRUCTURES

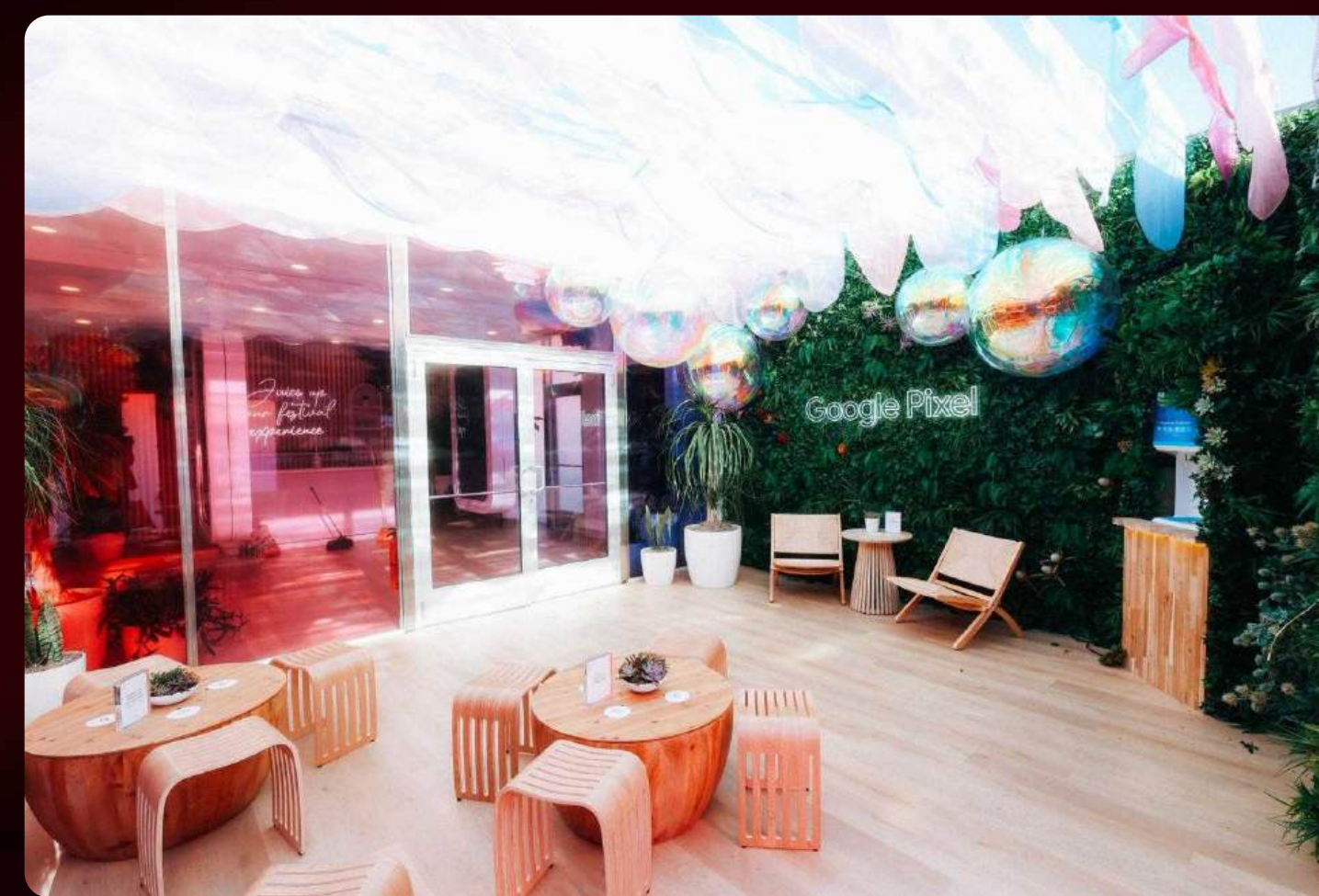


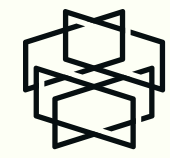
# 2024 GOOGLE PIXEL ACTIVATION





# 2024 GOOGLE PIXEL ACTIVATION





IS-1 // iCUBE

# INFINITE CUBE FOR EVERYTHING

Pop-up Shops, Restaurants, Merchandise

Production Offices

Brand Activations

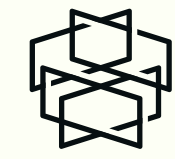
VIP Spaces

Multi-level structures

Rooftop Terraces

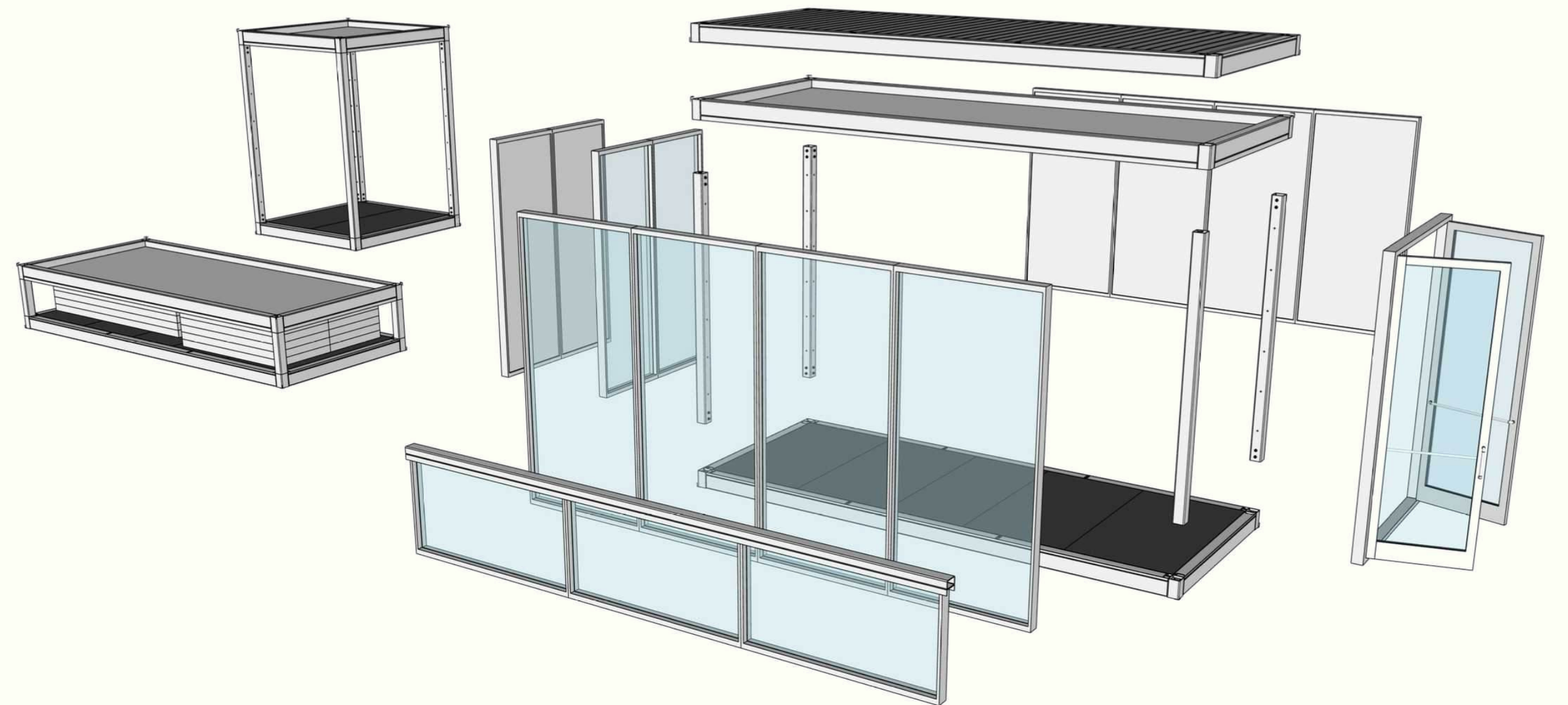
Temporary Dwellings



 IS-1 // iCUBE

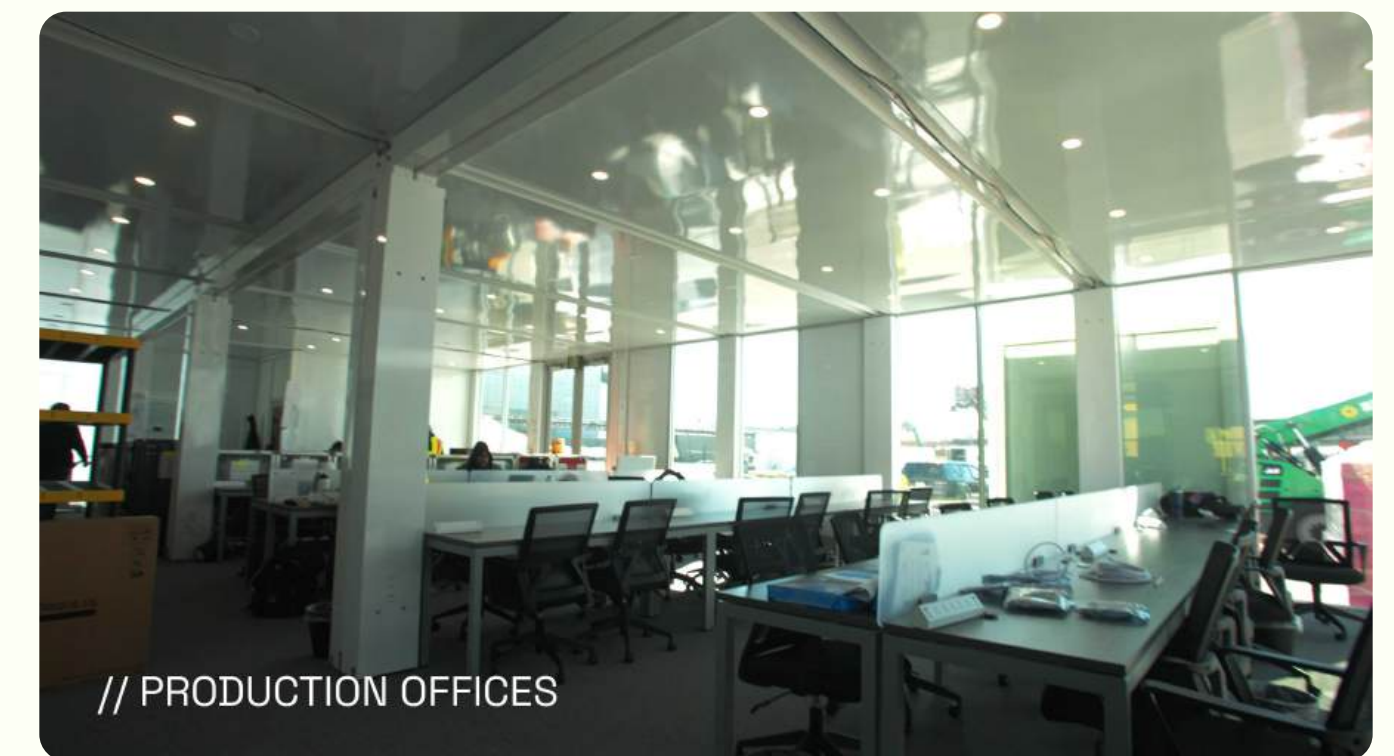
# A PRECISION ENGINEERED MODULAR SYSTEM

MODULAR, SUSTAINABLE, & VERSATILE





# FOX SPORTS PRODUCTION COMPOUND SBLIX

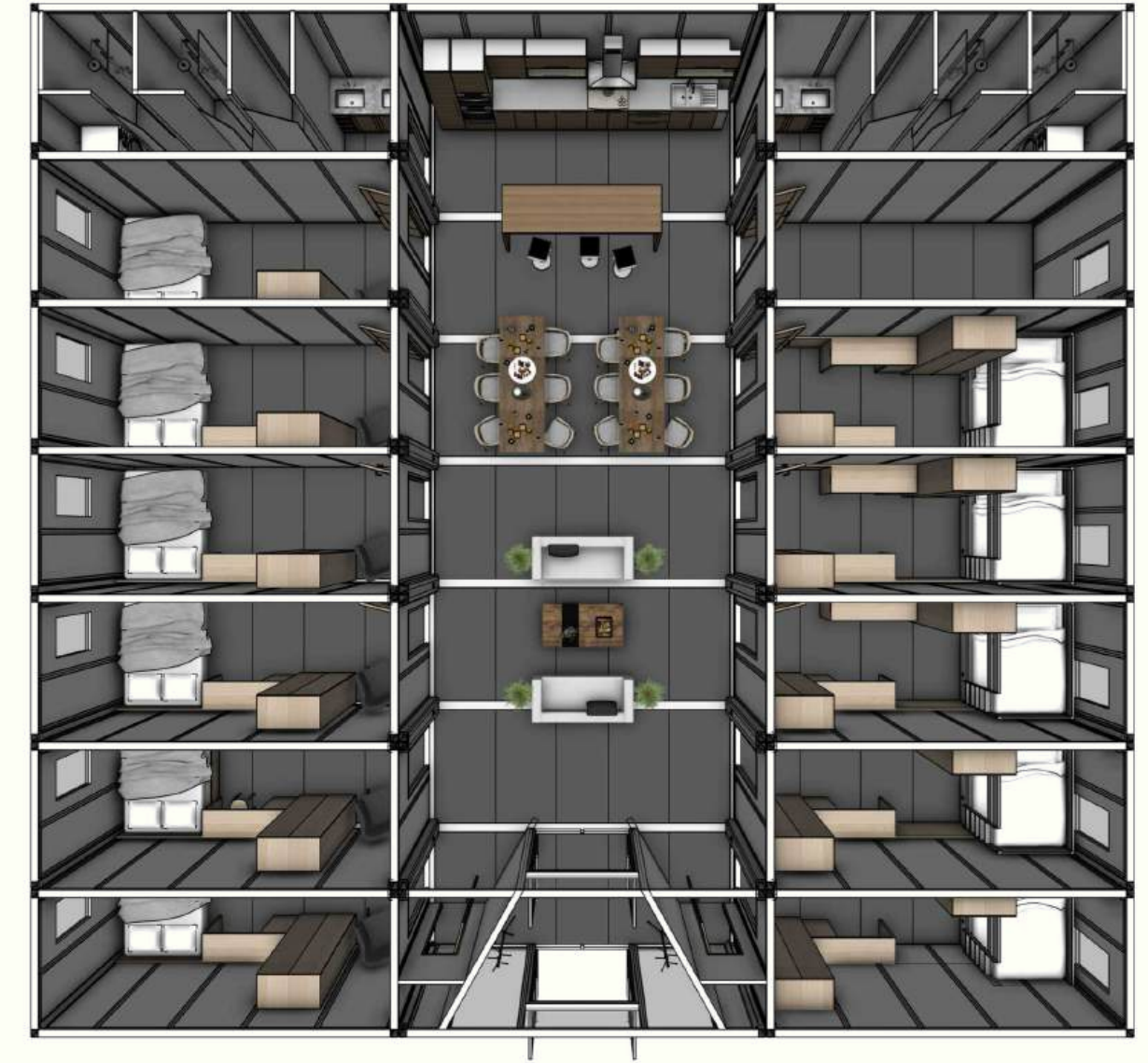


## PRODUCTION OFFICE SPACE

- On-site, mobile workspaces tailored for film, TV, or event production teams.
- Fully equipped with power, climate control, and customizable interiors.
- Efficient setup and teardown, saving time and reducing costs.
- Adaptable layouts to suit executive offices, meeting rooms, or collaborative workspaces.
- Durable, secure structures that ensure comfort and productivity in any environment.

## TEMPORARY HOUSING

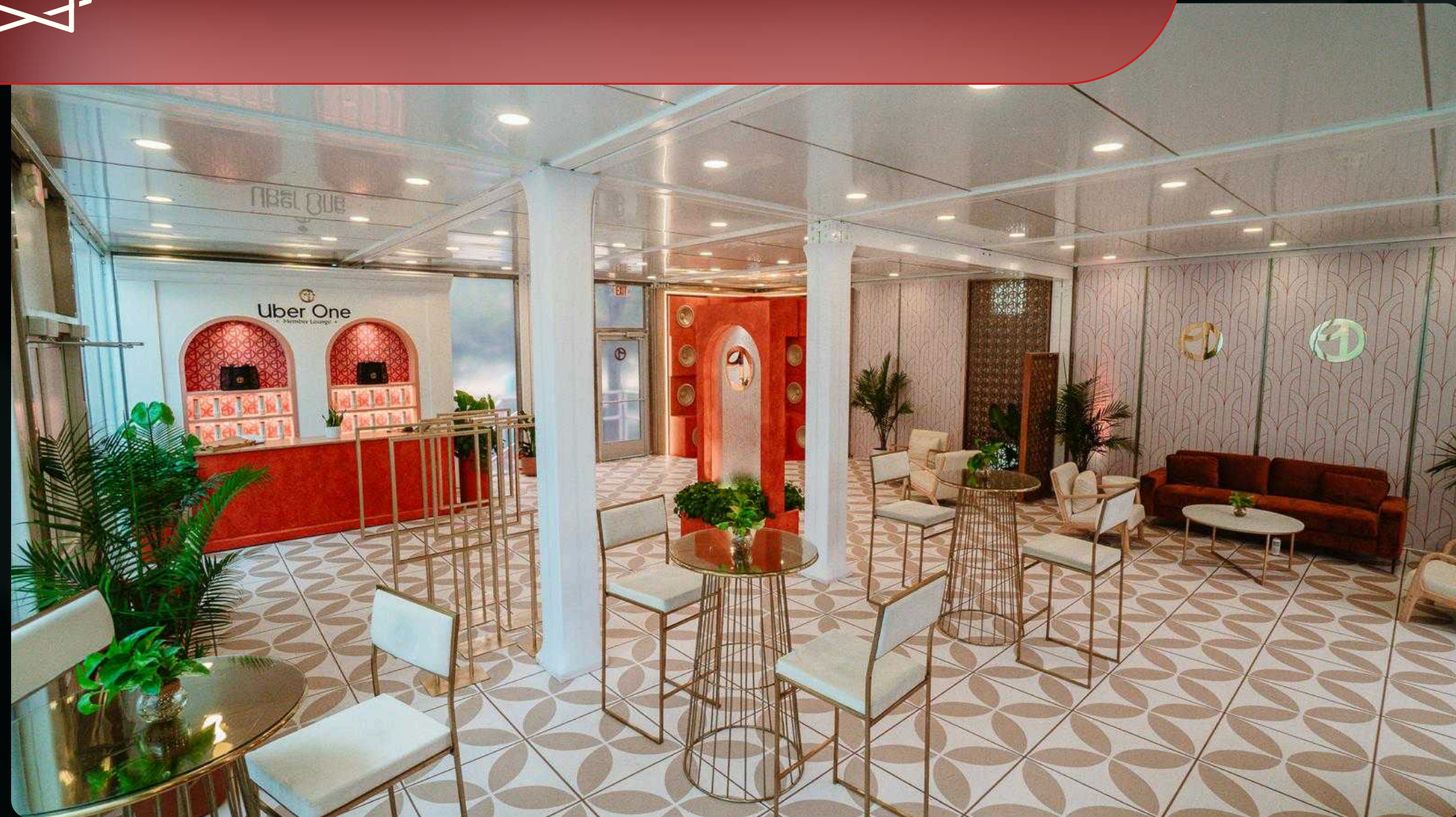
- Modular, weatherproof units designed for rapid deployment.
- Flexible configurations for emergency shelters, event lodging, or short-term accommodations.
- Energy-efficient, sustainable, and customizable interiors.
- Quick assembly with minimal labor required.
- Scalable to meet the needs of any project, from small setups to large operations.







# 2024 UBER ACTIVATION



# INFINITE CUBE IMPROVES PROJECTS

## **ELEGANT DESIGN**

- Sleek, minimalist design offers a polished and sophisticated look.
- High-quality materials and finishes ensure a premium aesthetic.
- Clean lines and contemporary style enhance any event or commercial space.

## **RAPID DEPLOYMENT**

- Innovative modular system ensures quick and efficient on-site installation.
- Reduced lead times and fast-deploy infrastructure enables tight deadline adherence.
- Flat-pack design allows for easy and cost-effective transportation and storage.

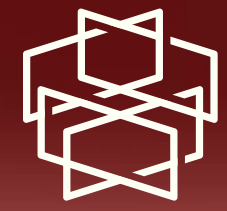
## **FLEXIBLE CONFIGURATION**

- Adaptable design allows for multi-story and diverse layout options.
- Interchangeable components enable easy customization to meet specific needs.
- Modular units can be reconfigured and repurposed for various applications.

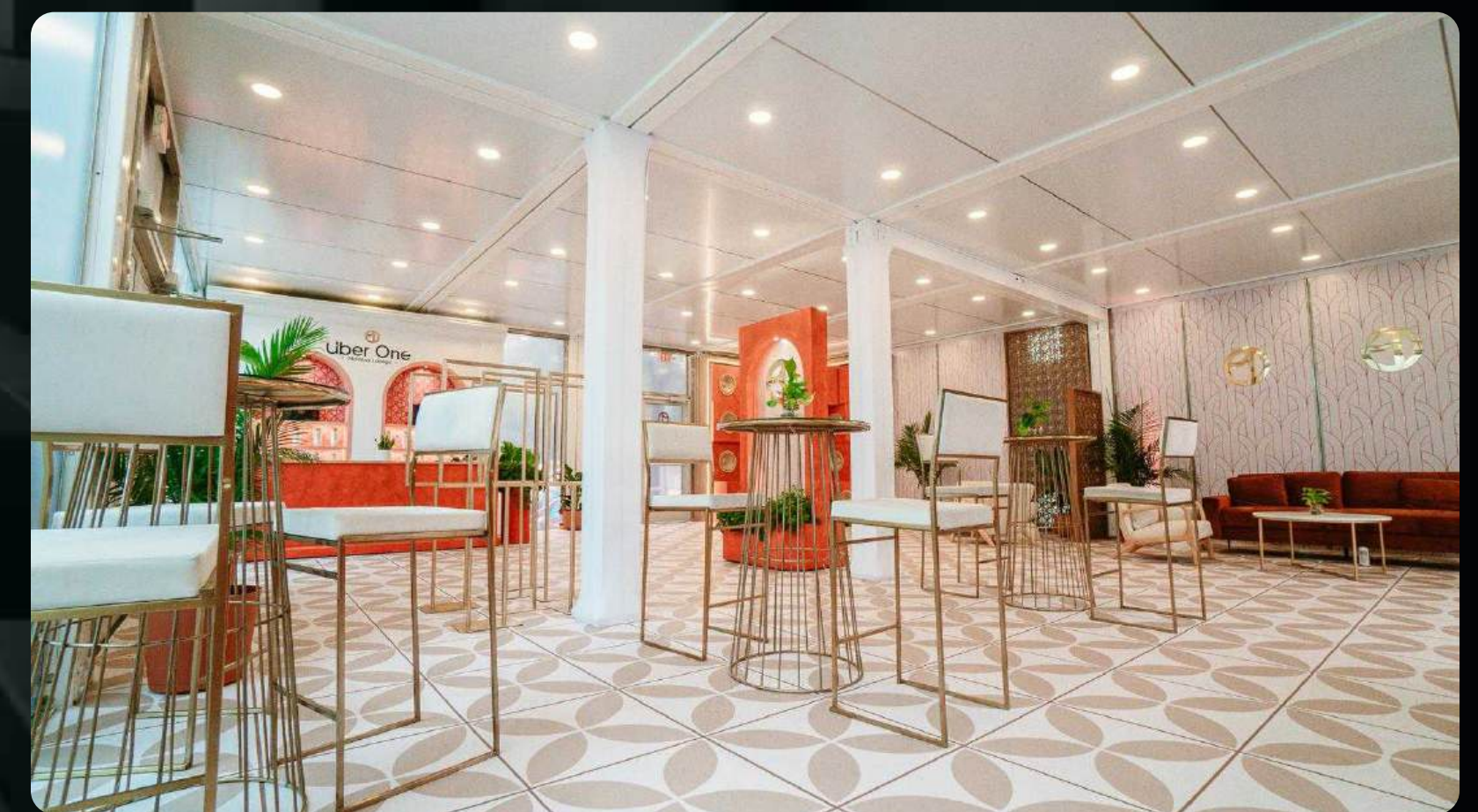
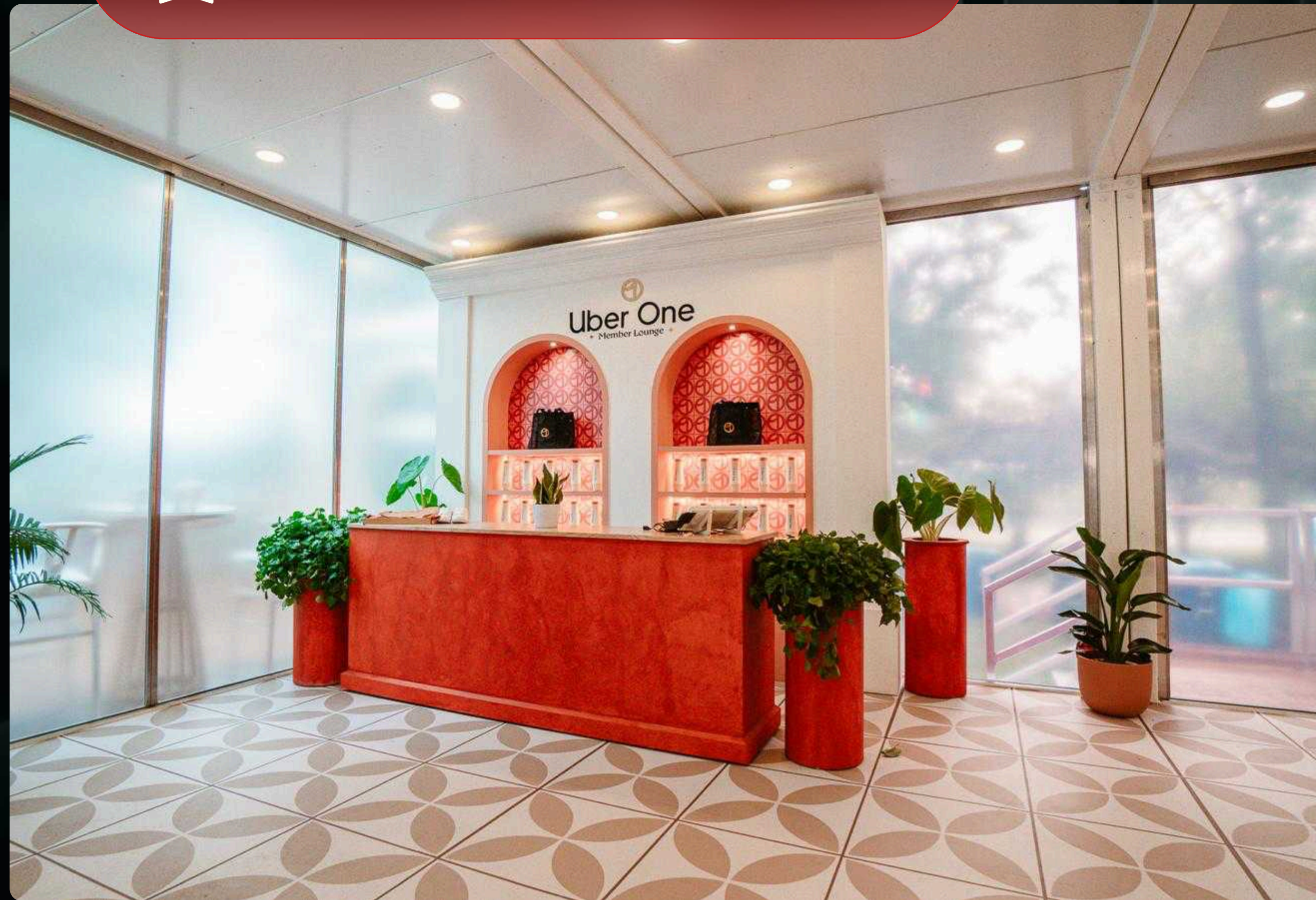
## **PROFESSIONAL PROJECT MANAGERS**

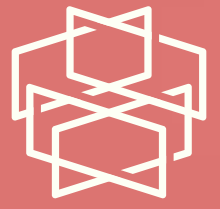
- Experienced team ensures efficient and timely project delivery.
- Streamlined processes provide smooth coordination from start to finish.





# 2024 UBER ACTIVATION

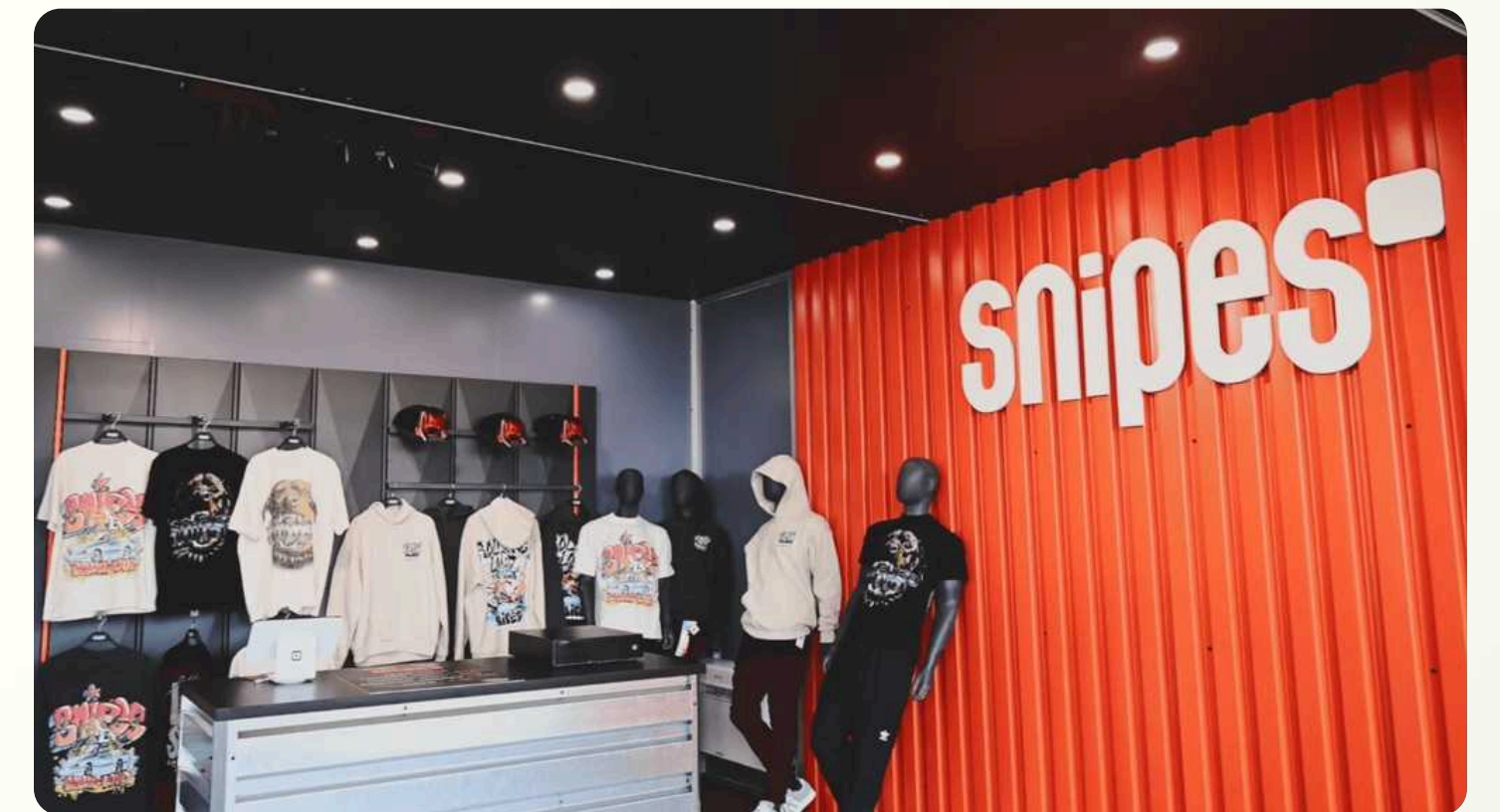


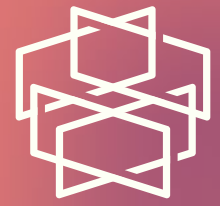


## SNIPES MERCH AT ROLLING LOUD 2024

### BRINGING YOUR BRAND TO THE PEOPLE

- Eye-catching designs for maximum impact.
- Customizable spaces to fit any brand or business.
- Quick setup and teardown for seamless execution.





# DRAFTKINGS NETWORK NFL KICKOFF



## IMPROVING OPERATIONAL CONTROL

- Multi-functional units for diverse applications.
- Configurable interiors for optimal workflow.
- Durable construction for reliable performance.





# INFINITE CUBE

## **DIMENSIONS**

8' x 20' boxes with 10' interior height, stackable up to three levels, plus rooftop terrace

## **LED LIGHTING**

Recessed LED lighting, dimmable & Bluetooth zone controlled

## **DURABILITY**

Waterproof, rated for high winds

## **SAFETY**

Handrail systems with internal & external stairs

## **FINISH**

Standard gloss white, fully customizable color finish

## **CLIMATE CONTROL**

HVAC

## **CONNECTIVITY**

Cable access, interior column covers with Edison plugs

## **PORTABILITY**

Collapsible to 18" height for travel

## **WALL OPTIONS**

Solid white insulated, full height glass, single & double glass doors

# INFINITE CUBE SOLVES PROBLEMS

## **MODULAR & CUSTOMIZABLE**

Infinite Cube's modularity makes any design goal achievable with ease, offering unparalleled flexibility and customization options for every project.

## **SUSTAINABLE EXCELLENCE**

Infinite-Cube delivers high-quality, durable, and visually appealing modular units without compromising environmental responsibility.

## **ENHANCES EFFICIENCY**

Infinite Cube's adaptable design provides multifunctional spaces that can be easily reconfigured and repurposed to meet diverse and evolving needs.





# SHAPE YOUR WORLD

INFINITESTRUCTURES.COM



U.S. PATENT PENDING