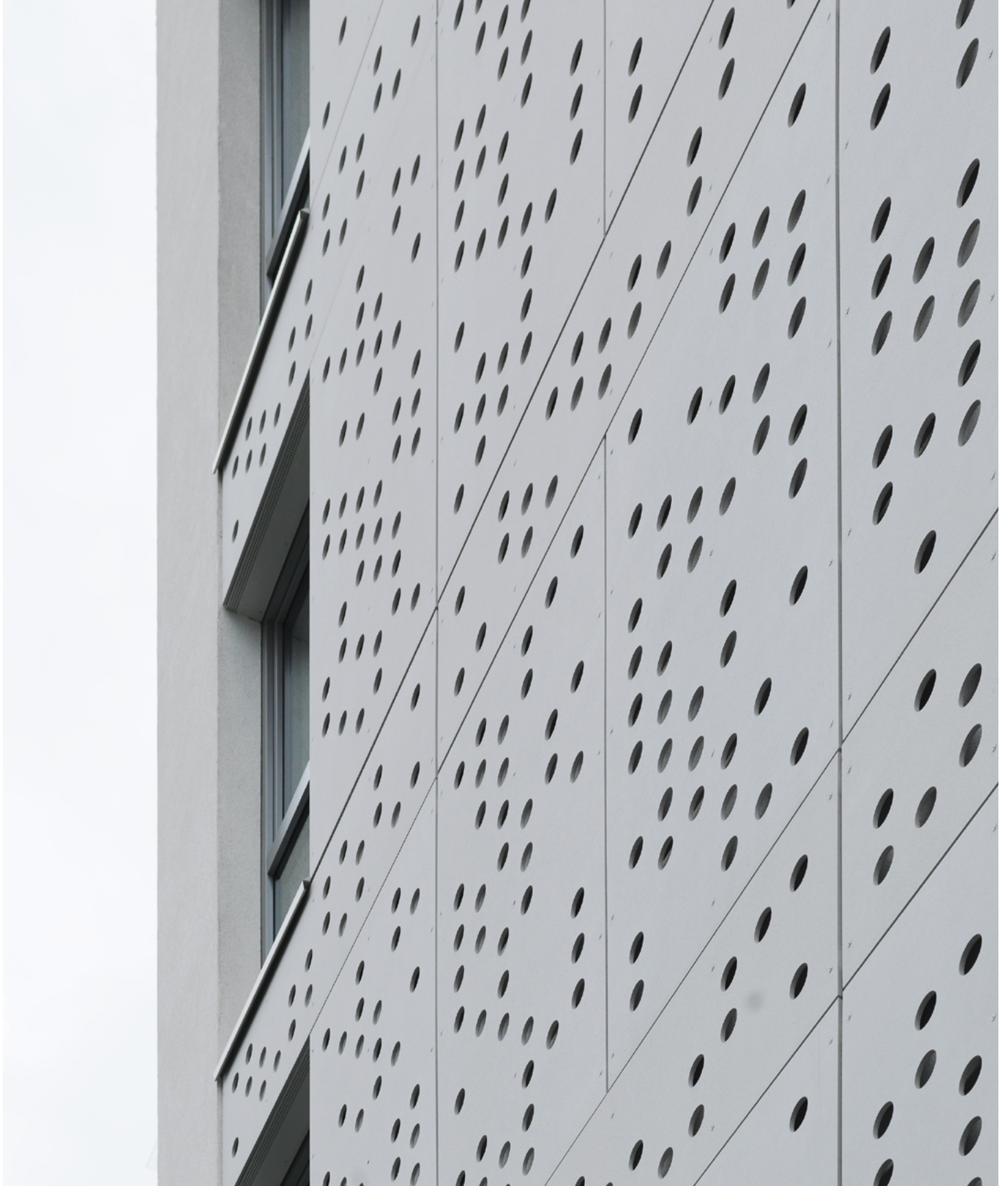


Rieder

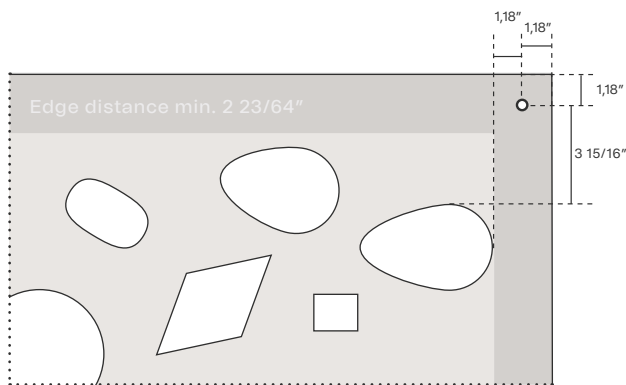
Perforation

Data sheet

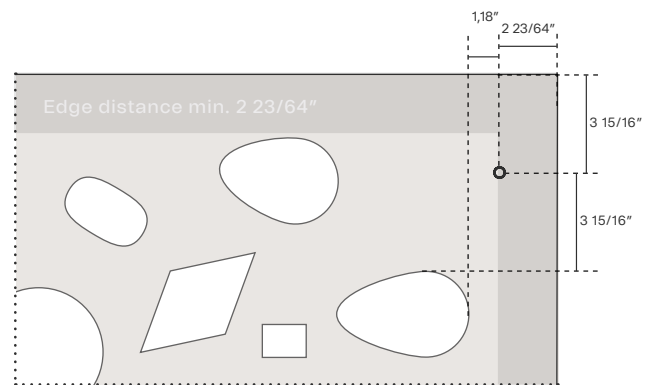


Product characteristics

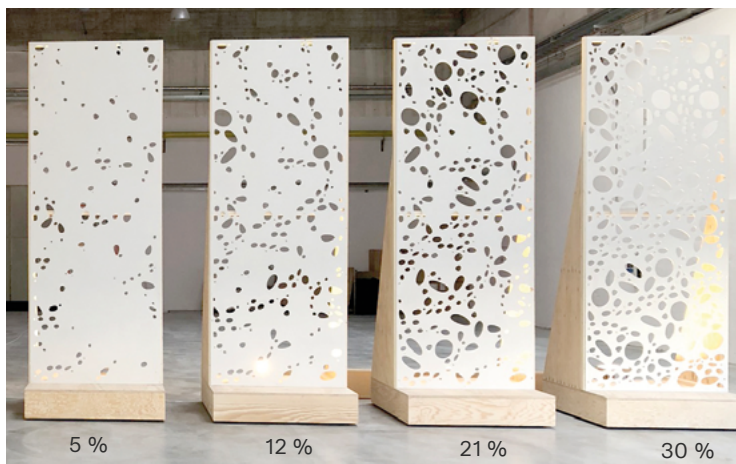
SPECIFICATIONS	Size	max. 59 29/64" x 196 27/32"
	Thickness	33/64"
	Surface	matt, ferro light, ferro; solo (interior only)
	Back (invisible side)	untreated ferro
	Colour collections	greyscale, timber, bricky, pietra
	Textures	available on request
PERFORATION	Perforation type	any type and pattern
	Hole percentage	max. 30% (review of statics is required)
	Hole diameter	min. 15/64"
	Perforation angle	45° to 90°
	Cutting width	min. 1/16"
	Edge distance perforation	min. 2 23/64"
	Distance between perforations	must be checked individually (depending on perforation size, shape and hole percentage)
FIXING	Mounting	manually or with vacuum suction; handling of the panel with special care; depending on the hole percentage, a transport frame may be required
	Visible	rivet, screw (on wooden supporting structure) ¹ : distance to slat edge at least 1,18"
	Concealed	undercut anchor: vertical distance to the edge of the panel min. 2 23/64", additional supporting structure or bracing may be necessary, depending on structural calculation



Visible fixing



Concealed fixing



Example elliptical perforation, varying hole percentage

Important!

- Check for each specific project:
- Structural system calculation
 - Technical feasibility
 - Hole percentage or hole distribution
 - Climbing protection
 - Fall protection
 - Burglary protection
 - Installation options
 - Handling

¹ For visible attachment using screws on a wooden supporting structure, no approval is available. The relevant country-specific regulations must be adhered to. Additionally, ¹ the technical foundations for the attachment must be followed.