

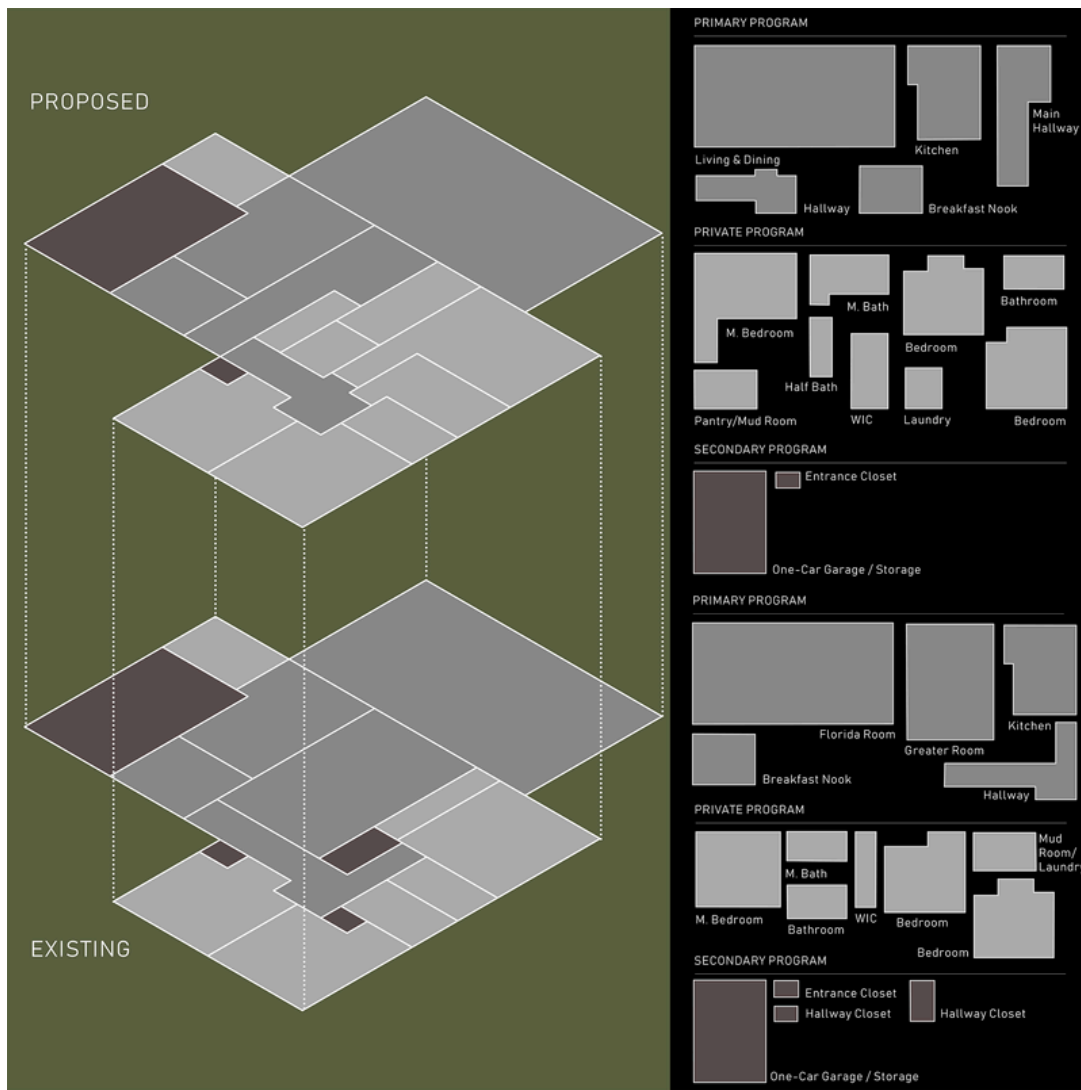
# MEADOWBROOK



## PROJECT OVERVIEW

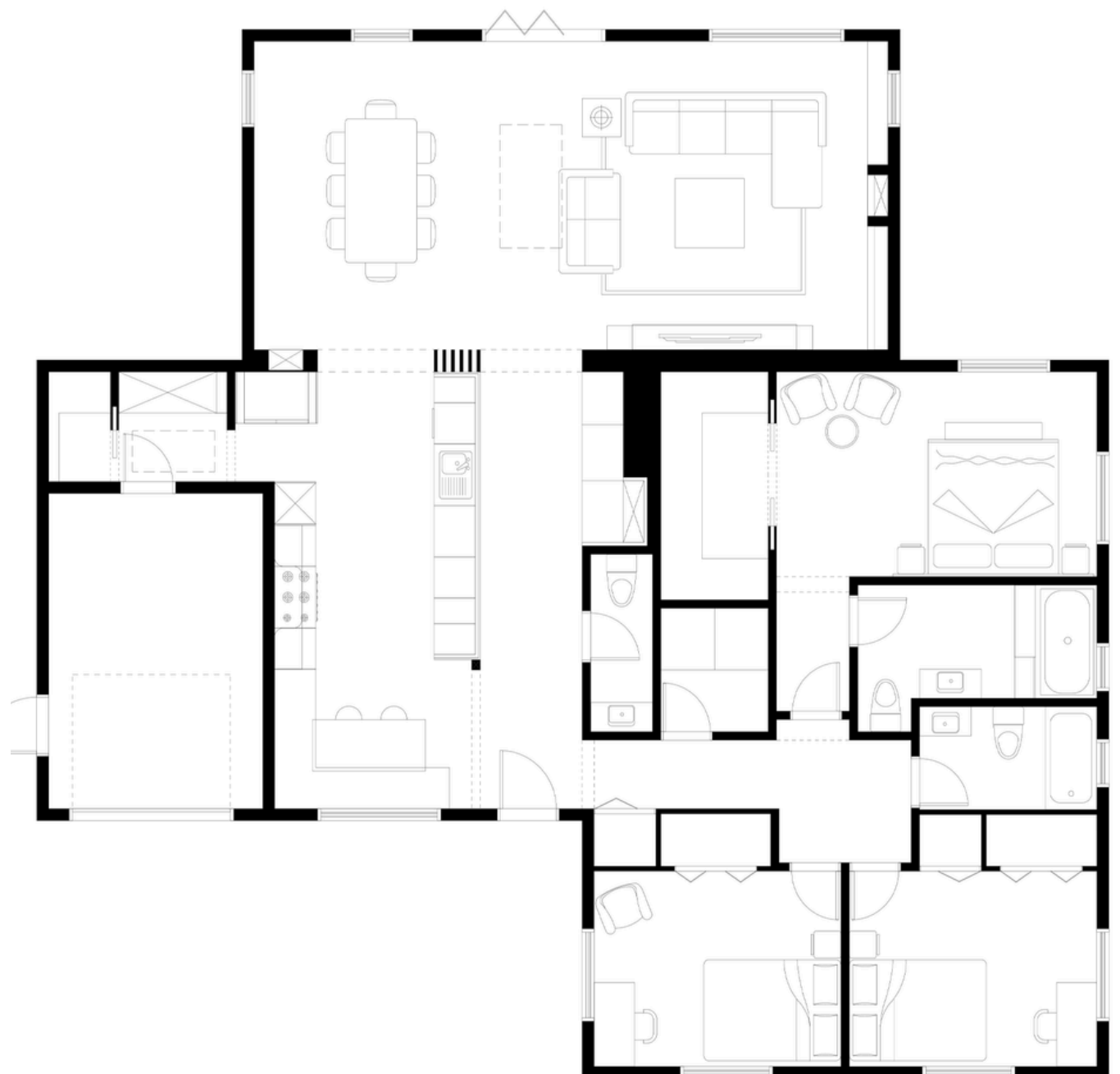
The Meadowbrook project represents a comprehensive interior transformation focused on restoring spatial balance and redefining circulation.

## PROGRAM PLANS



The original layout heavily favored public zones, leaving bedrooms, bathrooms, and storage undersized. The remodel reclaims this imbalance, redistributing space to enhance livability and coherence.

Strategic interventions included relocating the laundry zone from the mudroom to a more central position adjacent to all bedrooms. This opened space for a generous pantry and a new entry foyer, giving the home a proper architectural threshold.



## MASTER BATHROOM



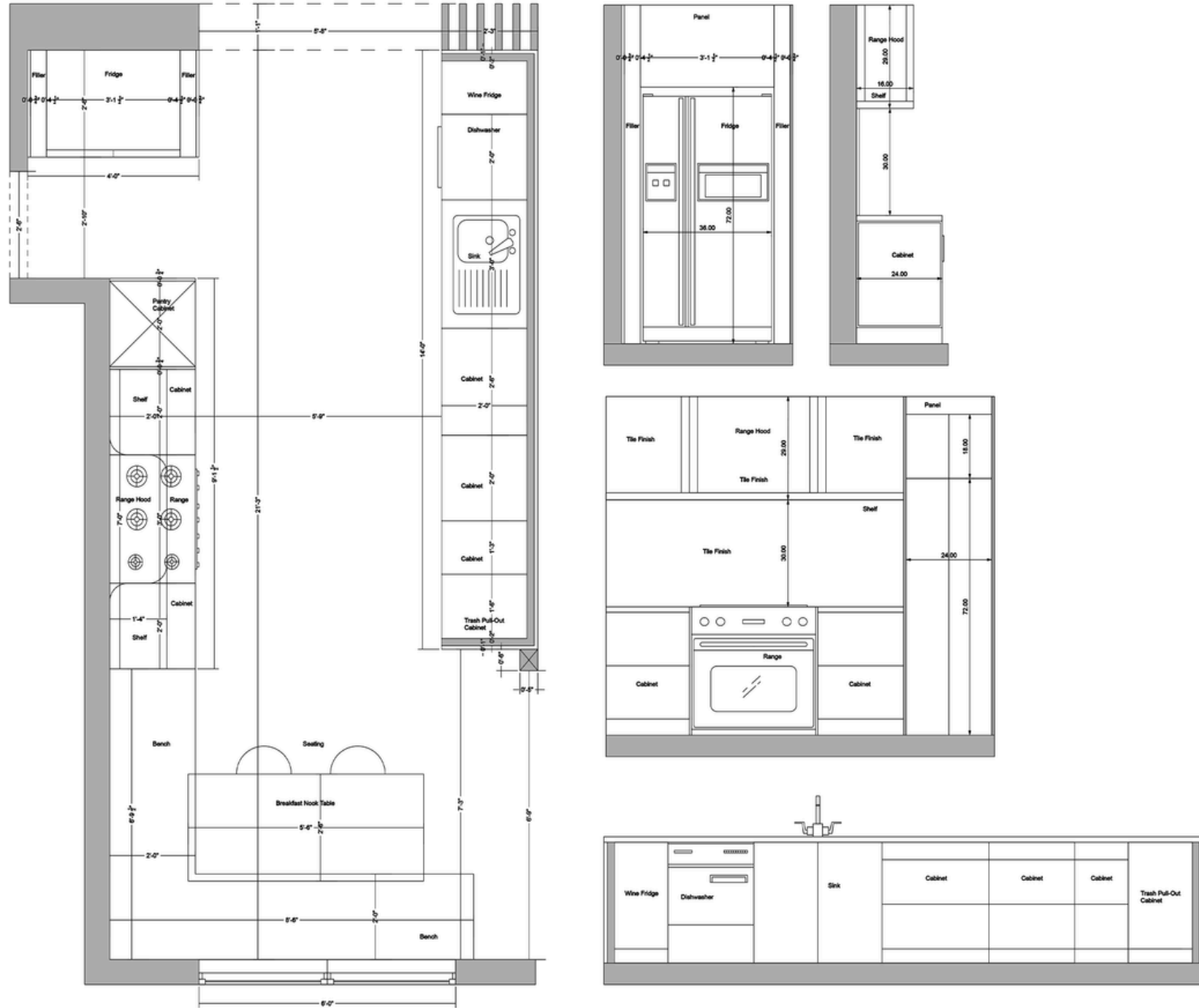
The secondary bedrooms remain unchanged in layout, while the master suite was substantially expanded by reclaiming footage from an oversized great room. The new suite includes a spacious bedroom, walk-in closet, and a fully appointed bathroom with a wet room.



# KITCHEN

A new six-foot-wide central hallway runs the length of the home, creating spatial order and establishing visual axis. Across from this hall, a built-in library and powder room activate previously underutilized space. The kitchen was also reconfigured: its primary work area now faces the garage, with a peninsula island anchoring the boundary between kitchen and corridor.

## PROPOSED KITCHEN CONSTRUCTION Plans & Elevations



## DINING AREA

The adjacent dining zone was moved to a more defined position beside the kitchen and reoriented for better flow.



# MOODBOARD

Veneer Under Shelves



Medium Wood Stain- Shelves & Niche



Fireplace and Hallway Bench





LVP Flooring  
Runs through entire space

ALABASTER  
-----  
S W 7 0 0 8  
MAIN WALL  
COLOR



FOSSIL  
-----  
LIMEWASH  
FIREPLACE  
FINISH



IVORY  
-----  
MICROCEMENT  
BENCH FINISH



GREEK VILLA  
-----  
S W 7 5 5 1  
HALF BATH  
WALL



SAGE MARBLE  
-----  
HALF BATH  
VANITY



Taj Mahal Quartz



Performance Linen or Faux Leather for Kitchen Bench



Off white Kitchen Cabinets



Range Hood Tile (Plaster Texture)



Bath Vanity





Alabaster - Matte Finish  
Fossil - Flat Finish  
Ivory Microcement - Smooth Finish  
Greek Villa - Satin Finish

## LIVING SPACE

The Florida room (once underused) is now the core of the living space, enhanced with exposed ceiling beams, a defined fireplace wall, and TV zone. Transitional moments are marked with signature archways: a half arch links the foyer to the kitchen; another frames the bedroom corridor; a full arch anchors the threshold into the new master suite. Skylights and enlarged rear windows bring daylight deep into the plan, supporting the home's new organizational clarity.




## FACADES



Materially, the front façade was updated with stone veneer, a modern paver path, and a planted entry sequence. Window modifications reinforce the rhythm of the interior layout.



## CONCLUSION



In total, Meadowbrook is a holistic rethinking of domestic proportion: one that balances privacy, function, and character through spatial planning and precise architectural detail.