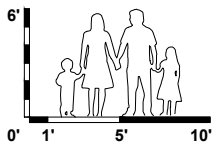
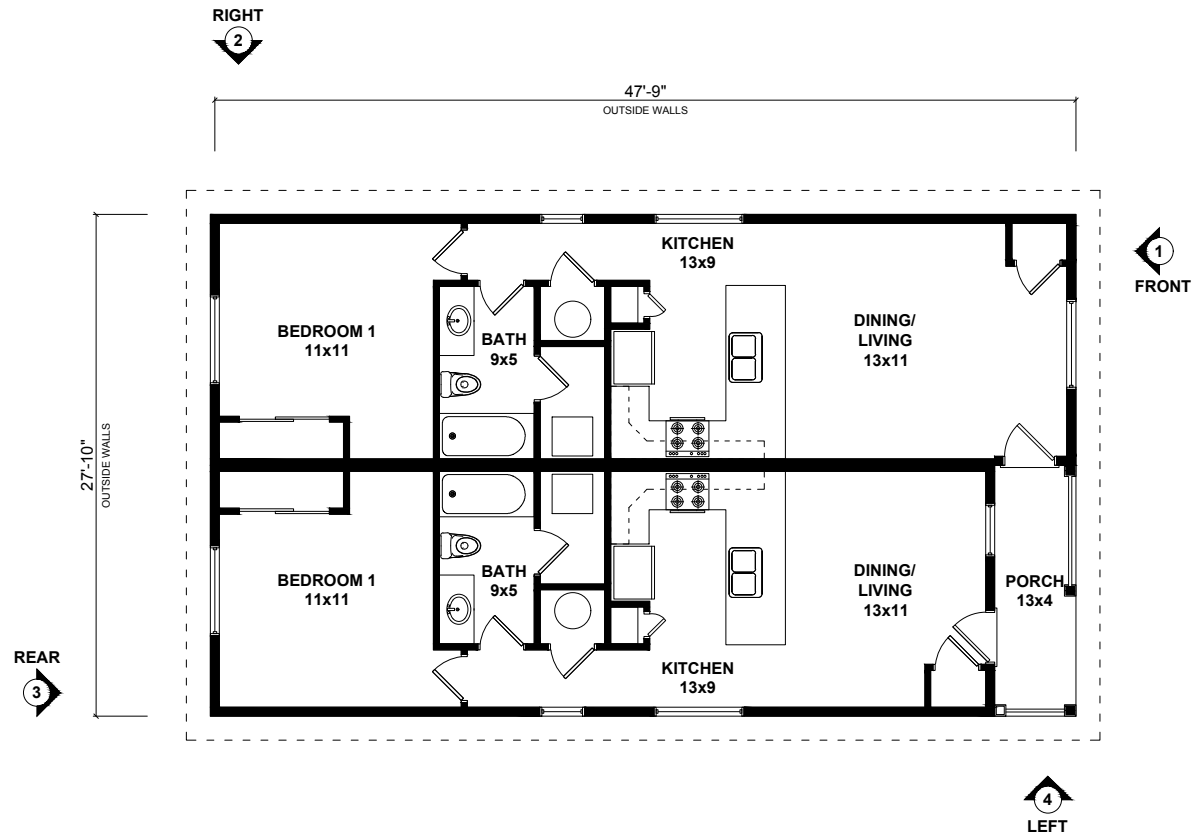


the  
**BOONE**  
Model presented by  
Aboda Design, Inc.



**IMPORTANT DISCLAIMERS & INFORMATION:**

© COPYRIGHT 2024, BY ABODA DESIGN, INC. - ALL RIGHTS RESERVED. THIS PLAN SET, DESIGNS, SYSTEMS & CONCEPTS ARE COPYRIGHT PROTECTED, & MAY NOT BE RECREATED OR ANY ITERATIONS MADE WITHOUT EXPRESS WRITTEN PERMISSION.

This plan set is a conceptual representation of the model and its available iterations, and does not constitute a contract in any manner. This model may be built in its presented orientation, or as a reverse of this plan set. Finished product may deviate slightly from this plan set as required materials are sourced and substituted. Finished product is factory certified by a nationally authorized 3rd party inspection organization and engineered according to its intended delivery state to the approved International Residential Code and other local requirements. Other requirements for completion of unit on site may include but are not limited to delivery, setting, civil engineering, foundation plans, MEP hookups, HVAC installation, other site work requirements, and final inspections for certificate of occupancy.

|                  |         |                |                 |
|------------------|---------|----------------|-----------------|
| <b>FLOORPLAN</b> | 1273 SF | <b>MODEL</b>   | BOONE           |
| <b>PORCH</b>     | 62 SF   | <b>STYLE</b>   | 1111-DUPLEX     |
| <b>2ND STORY</b> | 0 SF    | <b>VERSION</b> | 2024.11.12      |
| <b>TOTAL</b>     | 1325 SF | <b>WEB</b>     | AbodaDesign.com |

the  
**BOONE**  
Model presented by  
Aboda Design, Inc.

NOTES:

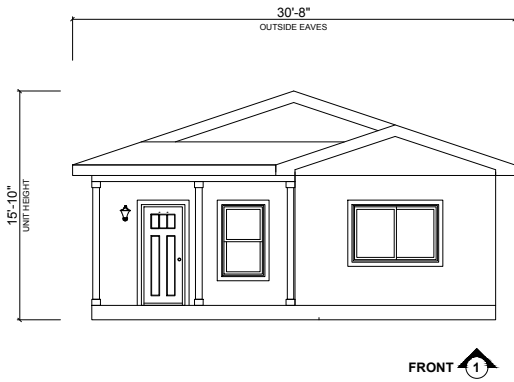


**IMPORTANT DISCLAIMERS & INFORMATION:**

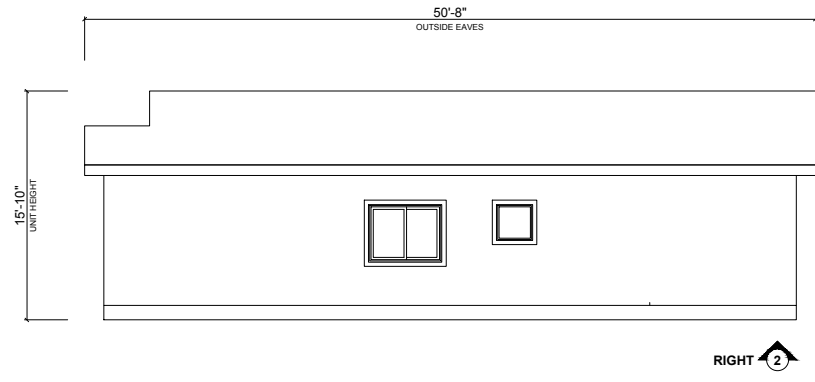
© COPYRIGHT 2024, BY ABODA DESIGN, INC. - ALL RIGHTS RESERVED. THIS PLAN SET, DESIGNS, SYSTEMS & CONCEPTS ARE COPYRIGHT PROTECTED, & MAY NOT BE RECREATED OR ANY ITERATIONS MADE WITHOUT EXPRESS WRITTEN PERMISSION.

This plan set is a conceptual representation of the model and its available iterations, and does not constitute a contract in any manner. This model may be built in its presented orientation, or as a reverse of this plan set. Finished product may deviate slightly from this plan set as required materials are sourced and substituted. Finished product is factory certified by a nationally authorized 3rd party inspection organization and engineered according to its intended delivery state to the approved International Residential Code and other local requirements. Other requirements for completion of unit on site may include but are not limited to delivery, setting, civil engineering, foundation plans, MEP hookups, HVAC installation, other site work requirements, and final inspections for certificate of occupancy.

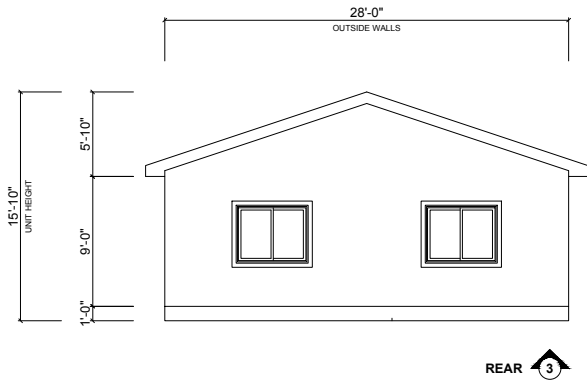
|                  |         |                |                 |
|------------------|---------|----------------|-----------------|
| <b>FLOORPLAN</b> | 1273 SF | <b>MODEL</b>   | BOONE           |
| <b>PORCH</b>     | 62 SF   | <b>STYLE</b>   | COTTAGE 1       |
| <b>2ND STORY</b> | 0 SF    | <b>VERSION</b> | 2024.11.12      |
| <b>TOTAL</b>     | 1325 SF | <b>WEB</b>     | AbodaDesign.com |



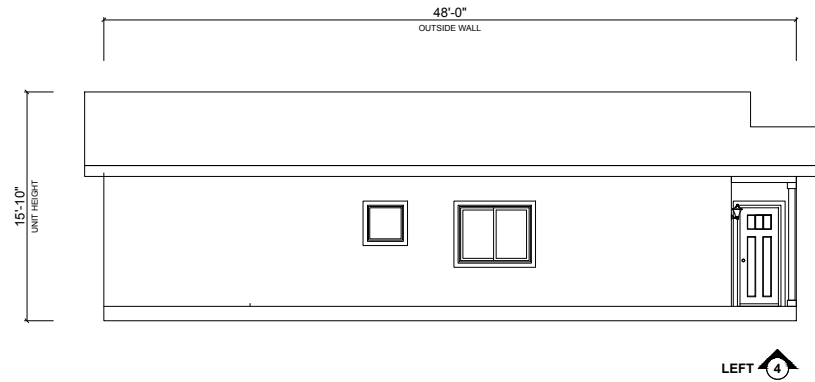
FRONT 1



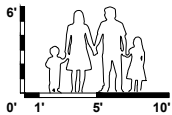
RIGHT 2



REAR 3



LEFT 4



**IMPORTANT DISCLAIMERS & INFORMATION:**

© COPYRIGHT 2024, BY ABODA DESIGN, INC. - ALL RIGHTS RESERVED. THIS PLAN SET, DESIGNS, SYSTEMS & CONCEPTS ARE COPYRIGHT PROTECTED, & MAY NOT BE RECREATED OR ANY ITERATIONS MADE WITHOUT EXPRESS WRITTEN PERMISSION.

This plan set is a conceptual representation of the model and its available iterations, and does not constitute a contract in any manner. This model may be built in its presented orientation, or as a reverse of this plan set. Finished product may deviate slightly from this plan set as required materials are sourced and substituted. Finished product is factory certified by a nationally authorized 3rd party inspection organization and engineered according to its intended delivery state to the approved International Residential Code and other local requirements. Other requirements for completion of unit on site may include but are not limited to delivery, setting, civil engineering, foundation plans, MEP hookups, HVAC installation, other site work requirements, and final inspections for certificate of occupancy.



|                  |         |                |                     |
|------------------|---------|----------------|---------------------|
| <b>FLOORPLAN</b> | 1273 SF | <b>MODEL</b>   | BOONE               |
| <b>PORCH</b>     | 62 SF   | <b>STYLE</b>   | COTTAGE 1 / OUTLINE |
| <b>2ND STORY</b> | 0 SF    | <b>VERSION</b> | 2024.11.12          |
| <b>TOTAL</b>     | 1325 SF | <b>WEB</b>     | AbodaDesign.com     |

the  
**BOONE**  
Model presented by  
Aboda Design, Inc.

NOTES:

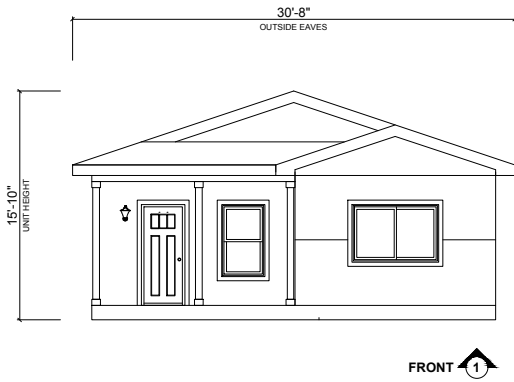


**IMPORTANT DISCLAIMERS & INFORMATION:**

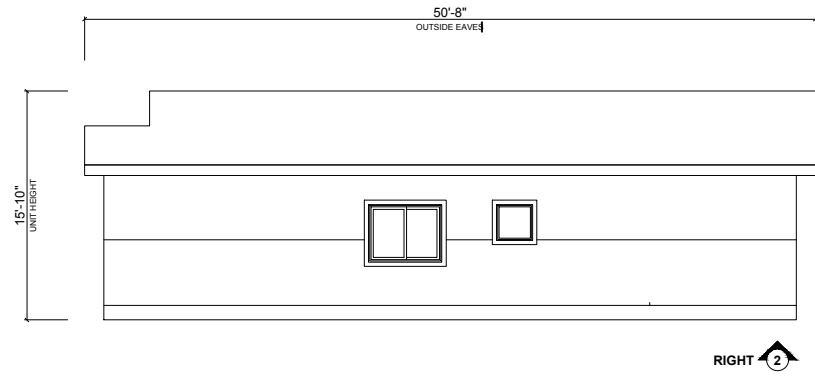
© COPYRIGHT 2024, BY ABODA DESIGN, INC. - ALL RIGHTS RESERVED. THIS PLAN SET, DESIGNS, SYSTEMS & CONCEPTS ARE COPYRIGHT PROTECTED, & MAY NOT BE RECREATED OR ANY ITERATIONS MADE WITHOUT EXPRESS WRITTEN PERMISSION.

This plan set is a conceptual representation of the model and its available iterations, and does not constitute a contract in any manner. This model may be built in its presented orientation, or as a reverse of this plan set. Finished product may deviate slightly from this plan set as required materials are sourced and substituted. Finished product is factory certified by a nationally authorized 3rd party inspection organization and engineered according to its intended delivery state to the approved International Residential Code and other local requirements. Other requirements for completion of unit on site may include but are not limited to delivery, setting, civil engineering, foundation plans, MEP hookups, HVAC installation, other site work requirements, and final inspections for certificate of occupancy.

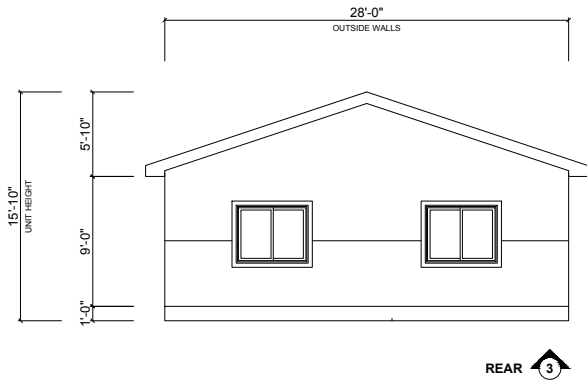
|                  |         |                |                 |
|------------------|---------|----------------|-----------------|
| <b>FLOORPLAN</b> | 1273 SF | <b>MODEL</b>   | BOONE           |
| <b>PORCH</b>     | 62 SF   | <b>STYLE</b>   | COTTAGE 2       |
| <b>2ND STORY</b> | 0 SF    | <b>VERSION</b> | 2024.11.12      |
| <b>TOTAL</b>     | 1325 SF | <b>WEB</b>     | AbodaDesign.com |



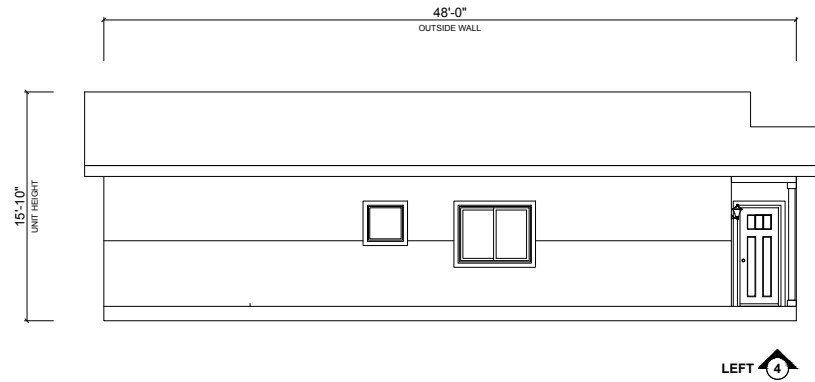
FRONT 1



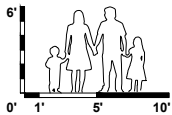
RIGHT 2



REAR 3



LEFT 4



**IMPORTANT DISCLAIMERS & INFORMATION:**

© COPYRIGHT 2024, BY ABODA DESIGN, INC. - ALL RIGHTS RESERVED. THIS PLAN SET, DESIGNS, SYSTEMS & CONCEPTS ARE COPYRIGHT PROTECTED, & MAY NOT BE RECREATED OR ANY ITERATIONS MADE WITHOUT EXPRESS WRITTEN PERMISSION.

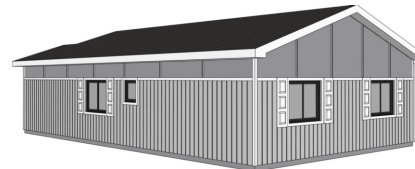
This plan set is a conceptual representation of the model and its available iterations, and does not constitute a contract in any manner. This model may be built in its presented orientation, or as a reverse of this plan set. Finished product may deviate slightly from this plan set as required materials are sourced and substituted. Finished product is factory certified by a nationally authorized 3rd party inspection organization and engineered according to its intended delivery state to the approved International Residential Code and other local requirements. Other requirements for completion of unit on site may include but are not limited to delivery, setting, civil engineering, foundation plans, MEP hookups, HVAC installation, other site work requirements, and final inspections for certificate of occupancy.



|                  |         |                |                     |
|------------------|---------|----------------|---------------------|
| <b>FLOORPLAN</b> | 1273 SF | <b>MODEL</b>   | BOONE               |
| <b>PORCH</b>     | 62 SF   | <b>STYLE</b>   | COTTAGE 2 / OUTLINE |
| <b>2ND STORY</b> | 0 SF    | <b>VERSION</b> | 2024.11.12          |
| <b>TOTAL</b>     | 1325 SF | <b>WEB</b>     | AbodaDesign.com     |

the  
**BOONE**  
Model presented by  
Aboda Design, Inc.

NOTES:

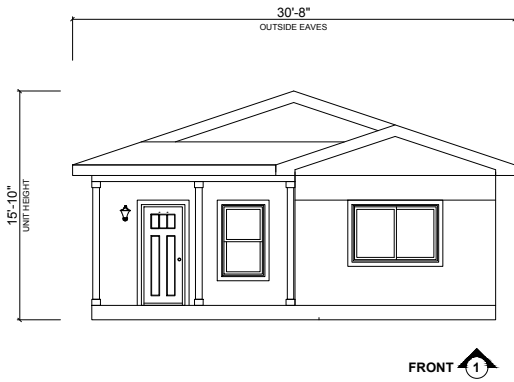


**IMPORTANT DISCLAIMERS & INFORMATION:**

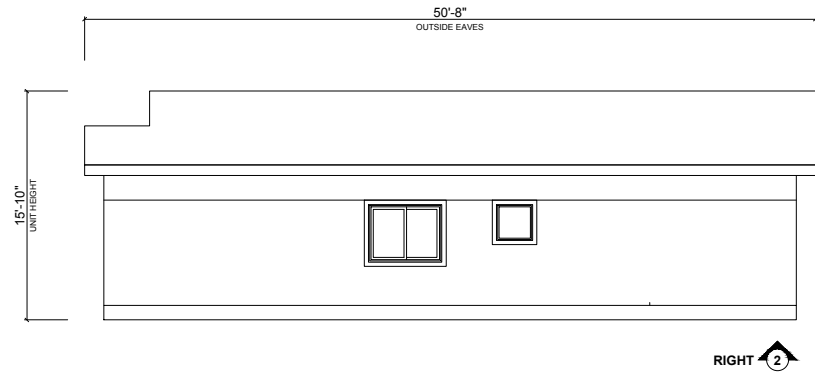
© COPYRIGHT 2024, BY ABODA DESIGN, INC. - ALL RIGHTS RESERVED. THIS PLAN SET, DESIGNS, SYSTEMS & CONCEPTS ARE COPYRIGHT PROTECTED, & MAY NOT BE RECREATED OR ANY ITERATIONS MADE WITHOUT EXPRESS WRITTEN PERMISSION.

This plan set is a conceptual representation of the model and its available iterations, and does not constitute a contract in any manner. This model may be built in its presented orientation, or as a reverse of this plan set. Finished product may deviate slightly from this plan set as required materials are sourced and substituted. Finished product is factory certified by a nationally authorized 3rd party inspection organization and engineered according to its intended delivery state to the approved International Residential Code and other local requirements. Other requirements for completion of unit on site may include but are not limited to delivery, setting, civil engineering, foundation plans, MEP hookups, HVAC installation, other site work requirements, and final inspections for certificate of occupancy.

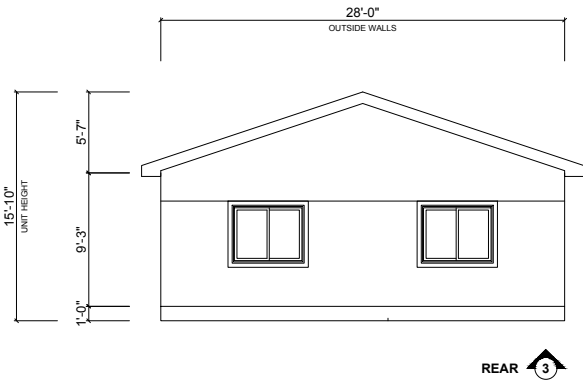
|                  |         |                |                 |
|------------------|---------|----------------|-----------------|
| <b>FLOORPLAN</b> | 1273 SF | <b>MODEL</b>   | BOONE           |
| <b>PORCH</b>     | 62 SF   | <b>STYLE</b>   | COTTAGE 3       |
| <b>2ND STORY</b> | 0 SF    | <b>VERSION</b> | 2024.11.12      |
| <b>TOTAL</b>     | 1325 SF | <b>WEB</b>     | AbodaDesign.com |



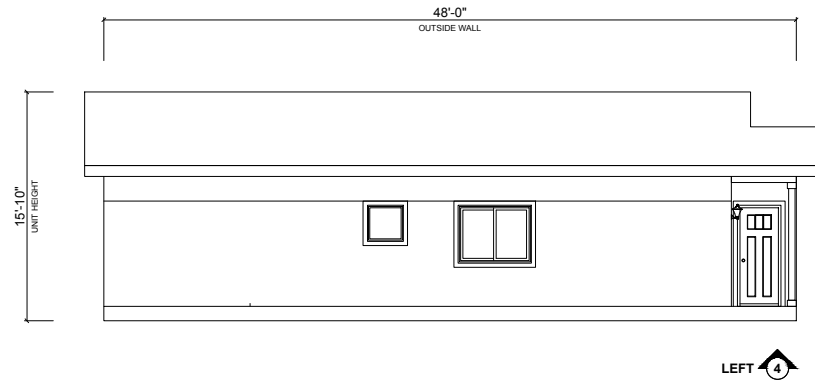
FRONT 1



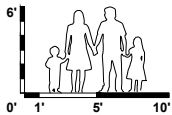
RIGHT 2



REAR 3



LEFT 4



**IMPORTANT DISCLAIMERS & INFORMATION:**

© COPYRIGHT 2024, BY ABODA DESIGN, INC. - ALL RIGHTS RESERVED. THIS PLAN SET, DESIGNS, SYSTEMS & CONCEPTS ARE COPYRIGHT PROTECTED, & MAY NOT BE RECREATED OR ANY ITERATIONS MADE WITHOUT EXPRESS WRITTEN PERMISSION.

This plan set is a conceptual representation of the model and its available iterations, and does not constitute a contract in any manner. This model may be built in its presented orientation, or as a reverse of this plan set. Finished product may deviate slightly from this plan set as required materials are sourced and substituted. Finished product is factory certified by a nationally authorized 3rd party inspection organization and engineered according to its intended delivery state to the approved International Residential Code and other local requirements. Other requirements for completion of unit on site may include but are not limited to delivery, setting, civil engineering, foundation plans, MEP hookups, HVAC installation, other site work requirements, and final inspections for certificate of occupancy.



|                  |         |                |                     |
|------------------|---------|----------------|---------------------|
| <b>FLOORPLAN</b> | 1273 SF | <b>MODEL</b>   | BOONE               |
| <b>PORCH</b>     | 62 SF   | <b>STYLE</b>   | COTTAGE 3 / OUTLINE |
| <b>2ND STORY</b> | 0 SF    | <b>VERSION</b> | 2024.11.12          |
| <b>TOTAL</b>     | 1325 SF | <b>WEB</b>     | AbodaDesign.com     |