



## Aromatic Plant Research Center

We provide uncompromising  
quality control for your products.

**Customer** : doTERRA International  
**Lot Number** : 231783  
**Date Filled** : 06/27/2023

**Column** : ZB5 (60 m length × 0.25 mm inner diameter × 0.25 µm film thickness)  
**Instrument** : Shimadzu GCMS-QP2010 Ultra  
**Carrier gas** : Helium 80 psi  
**Temperature ramp** : 2 degrees celsius per minute up to 260-degrees celsius  
**Split ratio** : 30:1  
**Sample preparation** : 5%w/v solution with Dichloromethane.



### Comments:

The analysis of this Clary Sage lot revealed no contaminants or adulteration.  
The sample meets the expected chemical profile for authentic essential oils of *Salvia sclarea*.

**Analysied by** : Ambika Poudel  
**Reviewed by** : Dr. Prabodh Satyal



© Copyright 2023 Aromatic Plant Research Center. All rights reserved. Any publishing, copying, use, dissemination, or distribution of this report, including online, without the express written permission of Aromatic Plant Research Center is strictly prohibited.

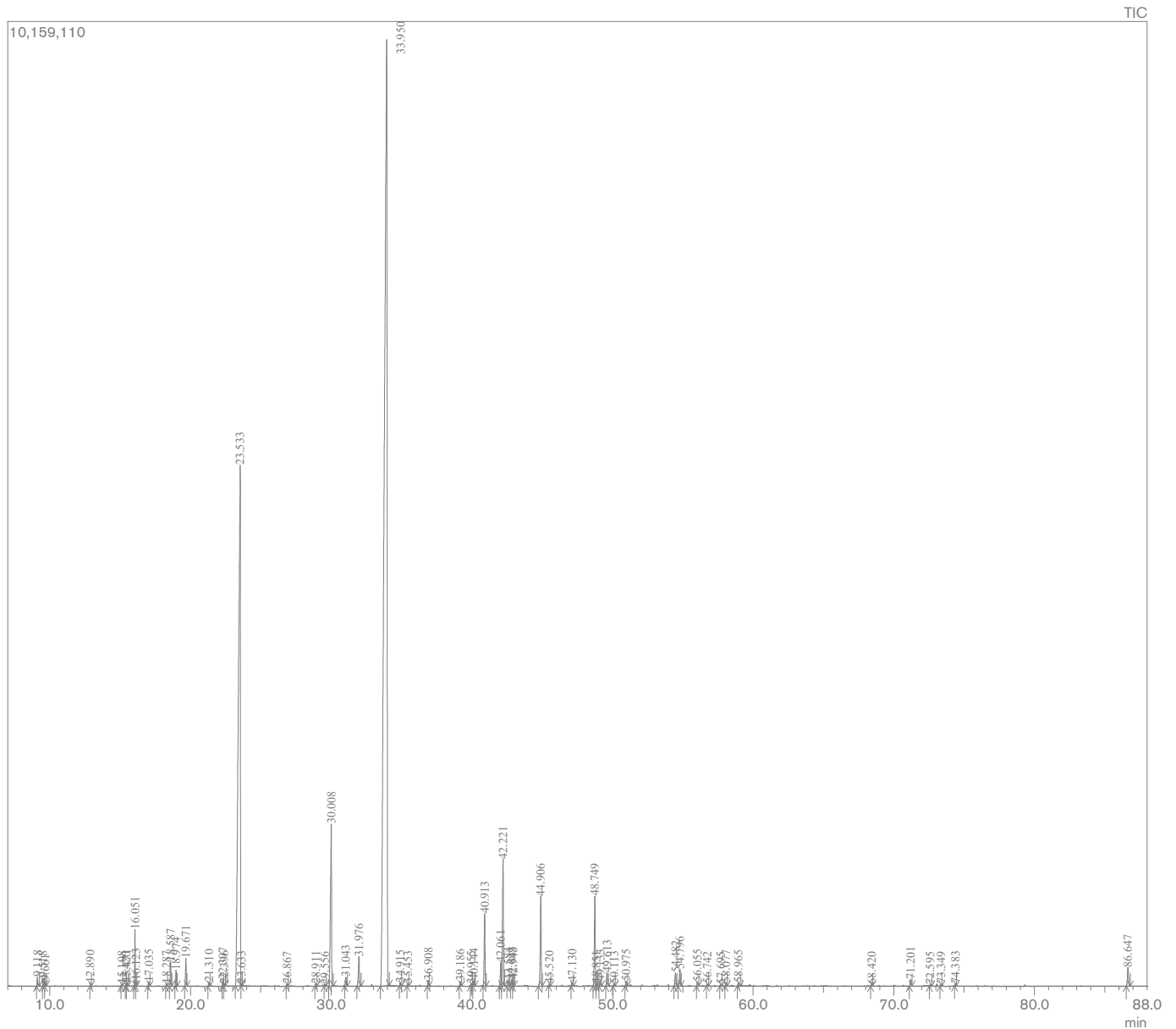
# Clary Sage Essential Oil

Customer : doTERRA International

Lot Number : 231783

Date Filled : 06/27/2023

## Chromatogram



© Copyright 2023 Aromatic Plant Research Center. All rights reserved. Any publishing, copying, use, dissemination, or distribution of this report, including online, without the express written permission of Aromatic Plant Research Center is strictly prohibited.

## Peak Report

Peak#	R.Time	Name	Area%
1	9.118	3-cis-Hexenol	0.12
2	9.518	2-trans-Hexenol	0.10
3	9.661	n-Hexanol	0.06
4	12.890	alpha-Pinene	0.04
5	15.108	Sabinene	0.03
6	15.420	beta-Pinene	0.02
7	15.471	1-Octen-3-ol	0.06
8	16.051	Myrcene	0.84
9	16.123	trans-Dehydroxy linalool oxide	0.06
10	17.035	cis-Dehydroxy linalool oxide	0.06
11	18.287	para-Cymene	0.04
12	18.587	Limonene	0.38
13	18.974	cis-beta-Ocimene	0.24
14	19.671	trans-beta-Ocimene	0.43
15	21.310	cis-Linalool oxide (furanoid)	0.07
16	22.307	Terpinolene	0.11
17	22.396	trans-Linalool oxide (furanoid)	0.04
18	23.533	Linalool	23.15
19	23.633	Hotrienol	0.04
20	26.867	Nerol oxide	0.03
21	28.911	Terpinen-4-ol	0.04
22	29.556	3-cis-Hexenyl butyrate	0.03
23	30.008	alpha-Terpineol	3.96
24	31.043	Linalyl formate	0.15
25	31.976	Nerol	0.69
26	33.950	Linalyl acetate	57.96
27	34.915	Geranial	0.06
28	35.453	Neryl formate	0.05
29	36.908	Geranyl formate	0.10
30	39.186	iso-Dihydro carveol acetate	0.09
31	39.955	Peroxy linalyl acetate A	0.04
32	40.144	alpha-Terpinyl acetate	0.11
33	40.913	Neryl acetate	1.35
34	42.061	alpha-Copaene	0.47
35	42.221	Geranyl acetate	2.56
36	42.584	beta-Bourbonene	0.12
37	42.843	beta-Cubebene	0.13
38	42.948	beta-Elemene	0.12
39	44.906	beta-Caryophyllene	1.82
40	45.520	beta-Copaene	0.03
41	47.130	alpha-Humulene	0.08
42	48.749	Germacrene D	1.88
43	48.851	Clary Sage Sesquiterpenoid 1	0.04
44	49.133	Hydroxy linalyl acetate	0.10
45	49.613	Bicyclogermacrene	0.27
46	50.113	trans-trans-alpha-Farnesene	0.04
47	50.975	delta-Cadinene	0.10
48	54.482	Spathulenol	0.26
49	54.796	Caryophyllene oxide	0.38
50	56.055	Clary Sage Sesquiterpenoid 2	0.08
51	56.742	Clary Sage Sesquiterpenoid 3	0.04
52	57.695	iso-Spathulenol	0.03
53	58.077	Caryophylla-4(12),8(13)-dien-5-beta-ol	0.06
54	58.965	beta-Eudesmol	0.08
55	68.420	cis-Thujopsenic acid	0.03
56	71.201	Sclareol oxide	0.14
57	72.595	Clary Sage Sesquiterpenoid 4	0.03
58	73.349	Pimar-15-ene-6,8-diol	0.03
59	74.383	Geranyl-para-cymene	0.03
60	86.647	Sclareol	0.49
			100.00

