

WET DRY WET DRY



# + TERRA MARINA

Barceloneta, Barcelona, Spain

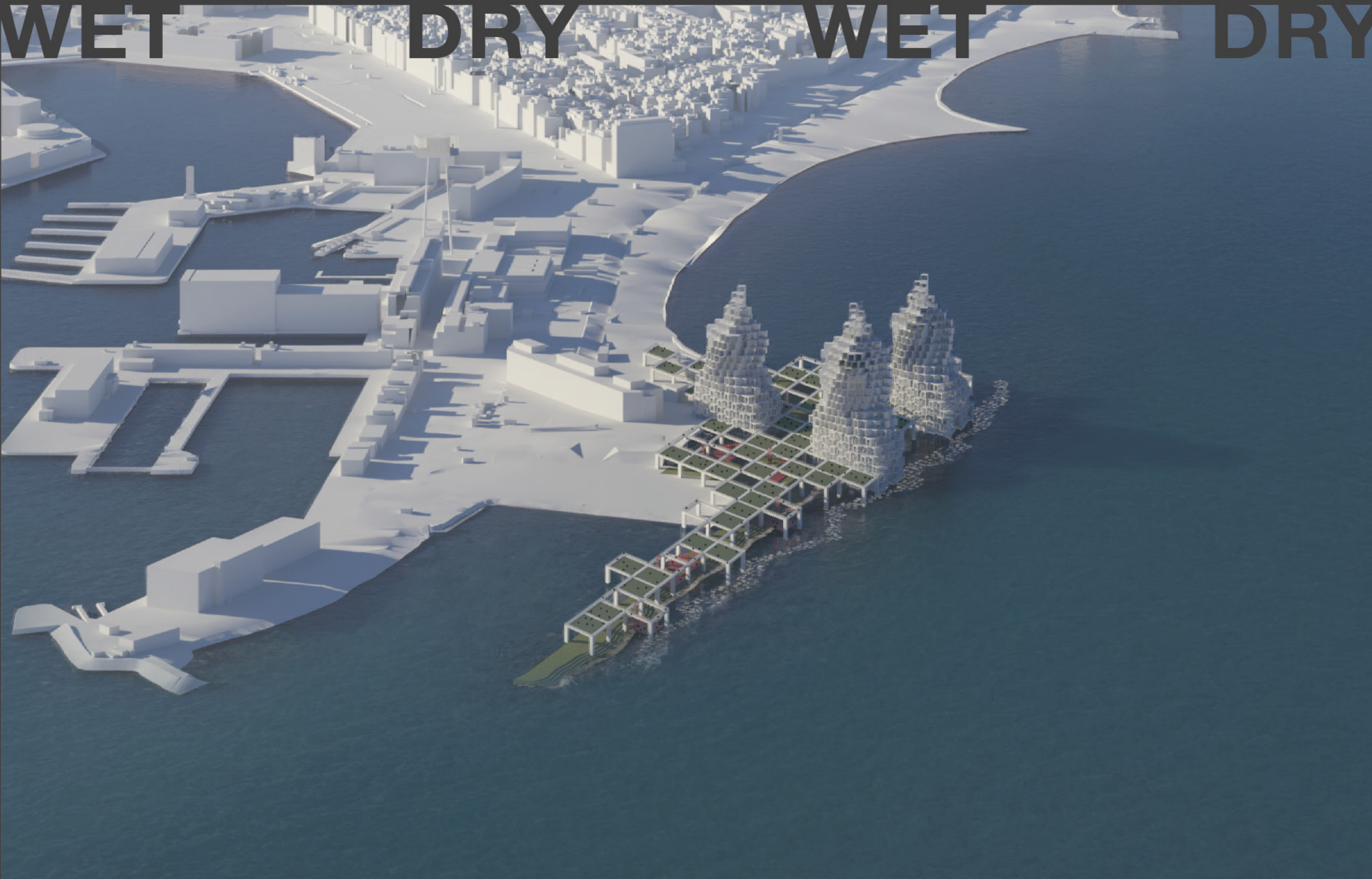
ARCH 3540 | Profs. Miguel Roldán, Mercè Berengué & David Espuña | Fall 2024

Partnered with Markeim Smith

After visiting the current W Hotel Barcelona and Plaça in Barceloneta Beach, we observed that there was a tremendous amount of concrete, whether that be hardscape pavement, the nearby buildings or the breakwater protecting the coastline. The extreme amount

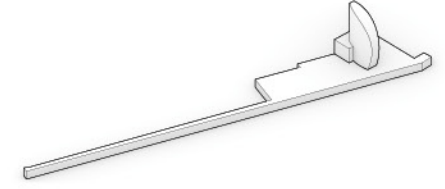
of concrete creates a harsh site and a distant interaction with the Mediterranean Sea's coastline. The aim of this project is to foster a closer interaction between the visitors Mediterranean Sea. This was done by recycling the entire site, from the concrete used in the Plaça, W Hotel, and

the landscape. Built as a hub for the America's Cup sailing races, Terra Marina also hopes to serve citizens of Barcelona during and after the races as an interactive and provocative connection between visitors, our landscape, and the Mediterranean Sea.



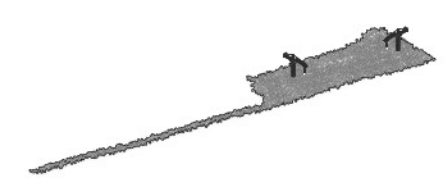
## + Recycling Turned Design Process

### + Existing W Hotel & Praça.



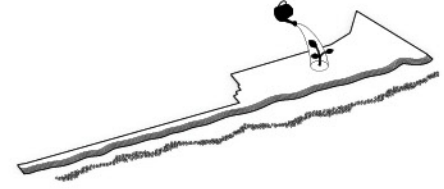
The existing W Hotel & Praça contains *harsh concrete* site and *distant interaction* with the coastline.

### + Demolish Site.



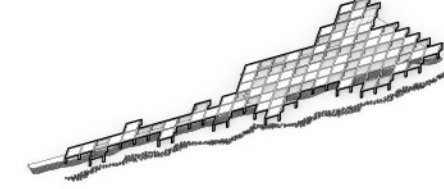
The existing W Hotel & Praça is *demolished* and the remaining concrete is *recycled* for the following steps.

### + Ecological Revitalization.



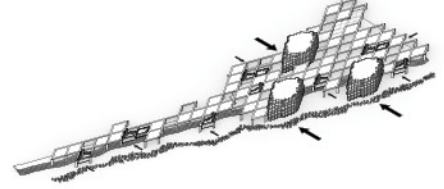
The demolished site is then *revitalized* into a *wetland landscape* that resists tidal waves and prevents erosion.

### + Introduce the Net & Dry Grasses.



The *recycled concrete* Net is then lightly set to *protect the nature* of the wetlands and create a *new landscape*.

### + Insert Public Program.



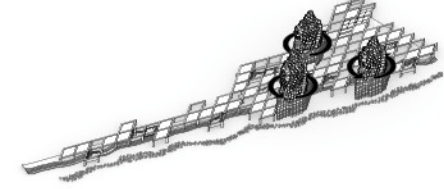
Public program is inserted between the Net and the wetland landscape to *foster connection* between the two worlds.

### + Place Private Program.



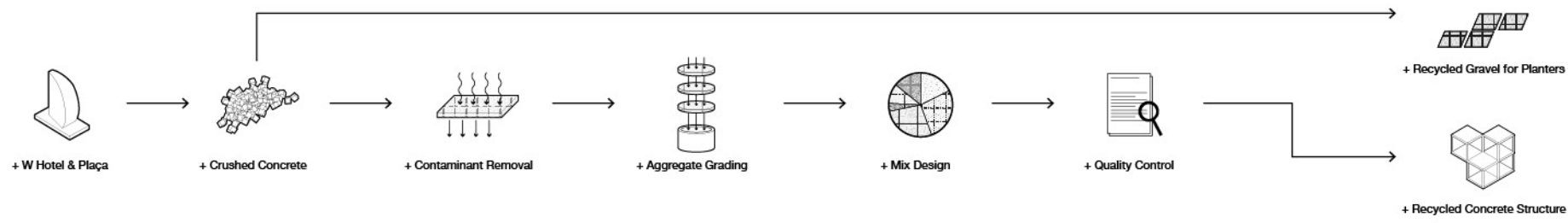
Private program is placed on top of the public in order to *maximize views* towards the *city, marina, and beach*.

### + Twist Private Program.

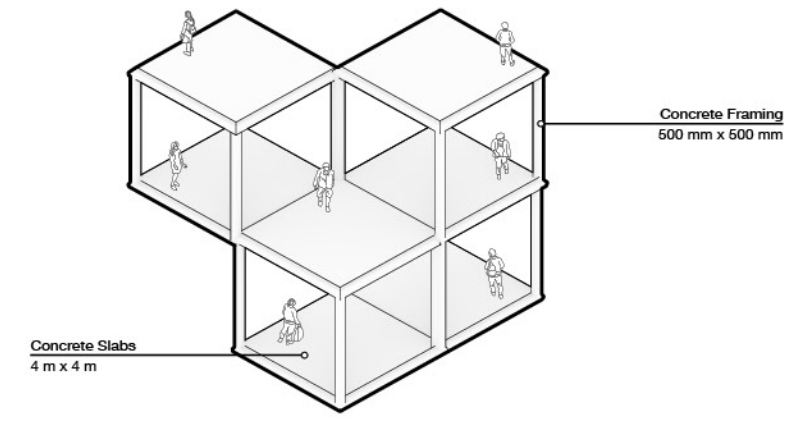


Private program is then twisted in order to *respond to the coastline* allow every room to have views along it.

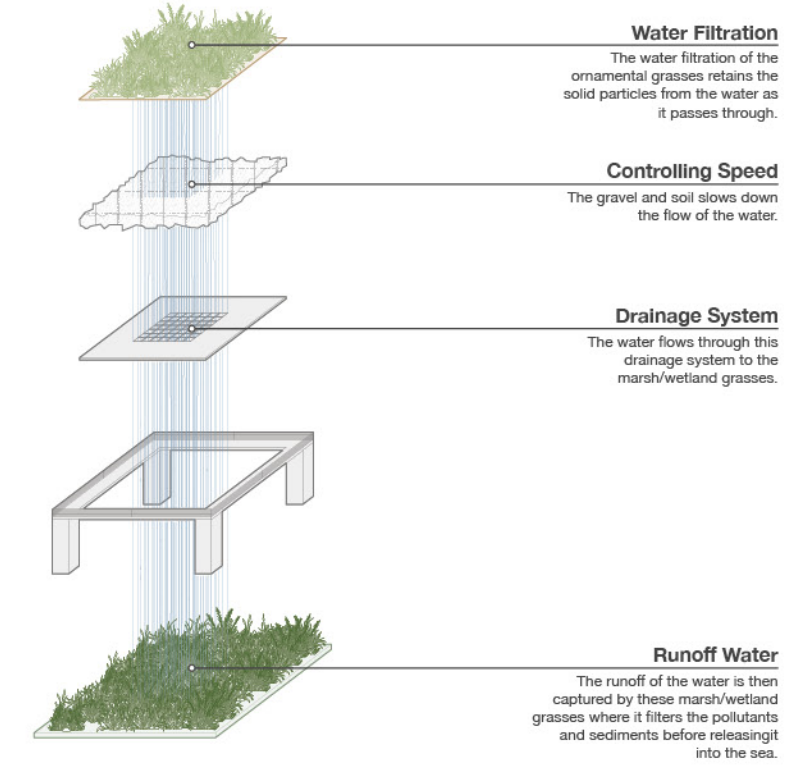
## + Concrete Recycling Process



## + Recycled Concrete Structure



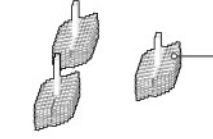
## + Net Watering Cycle



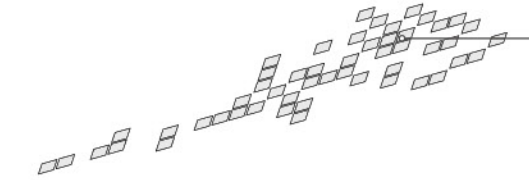
### Twisting Cup Residences



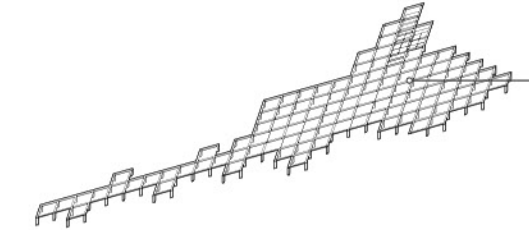
### Public Program



### Dry Grasses in Planters



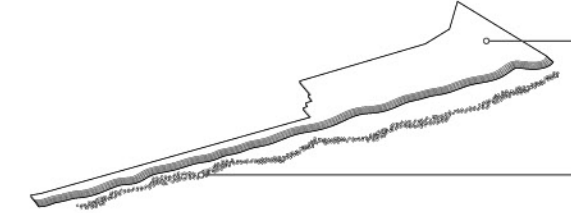
### Concrete Net



### Submerged Viewing Decks



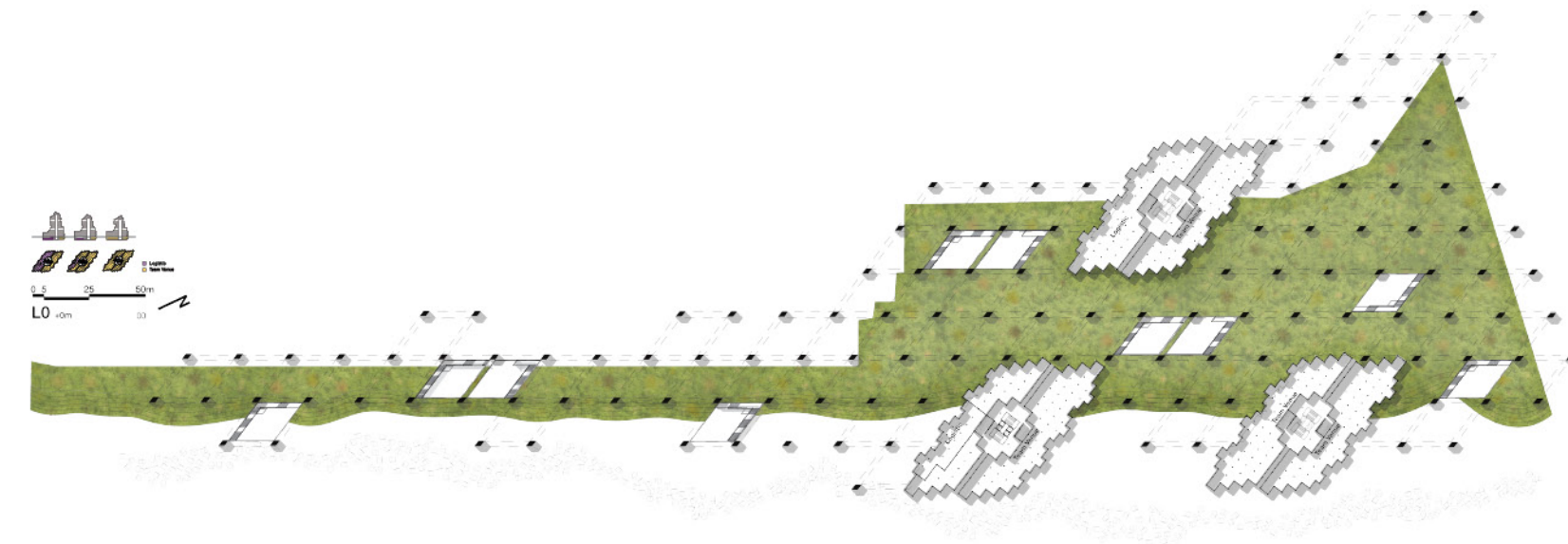
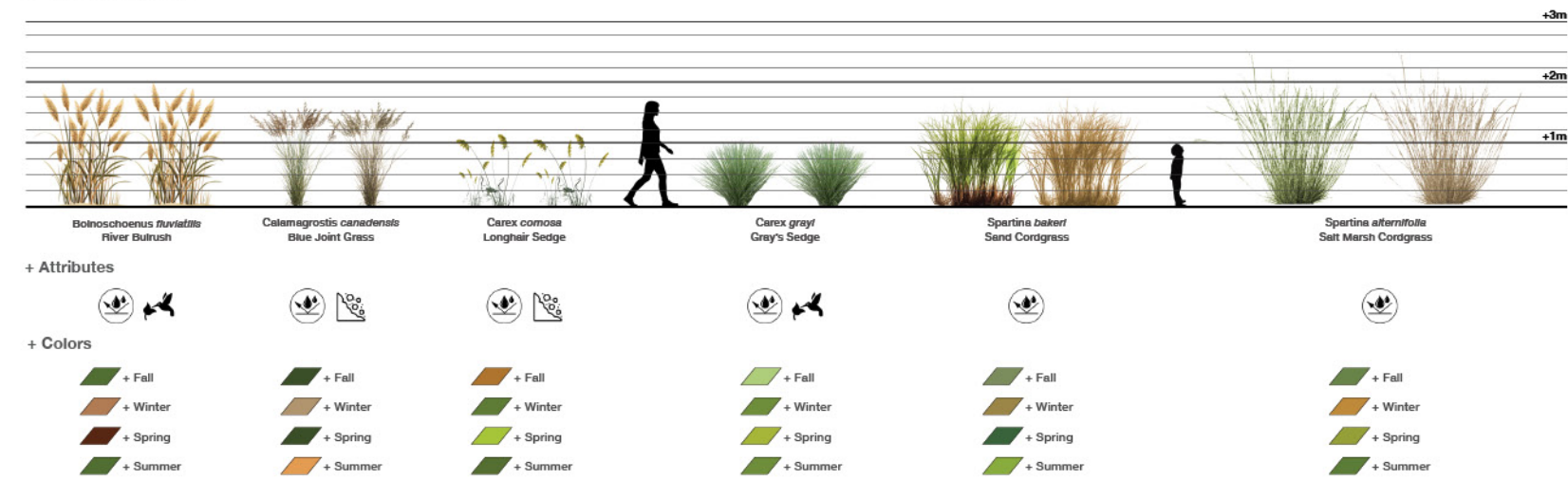
### Revitalized Wetland Landscape



### Reduced Breakwater Infill

# + Level 0 (+0m)

## + Wet Grasses



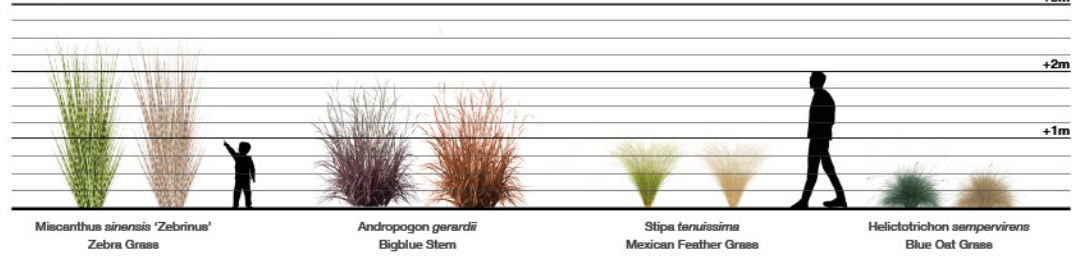
+ Perspective underneath the net on a viewing deck where visitors can experience the wetland landscape.



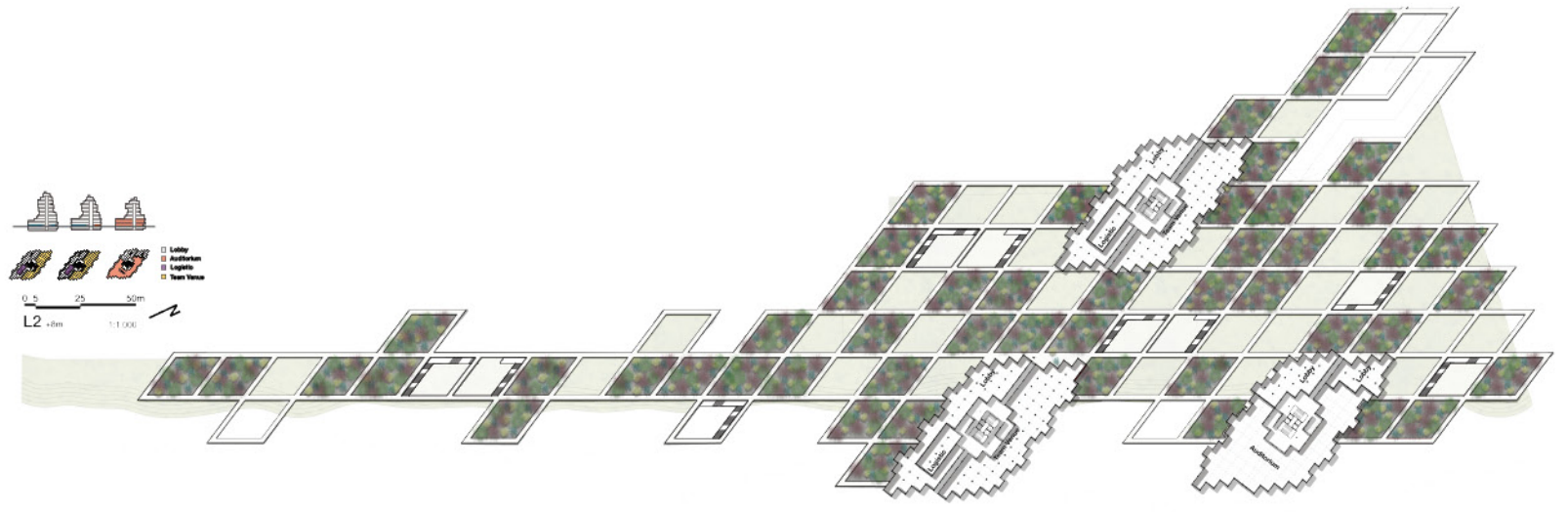
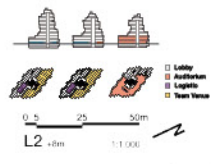
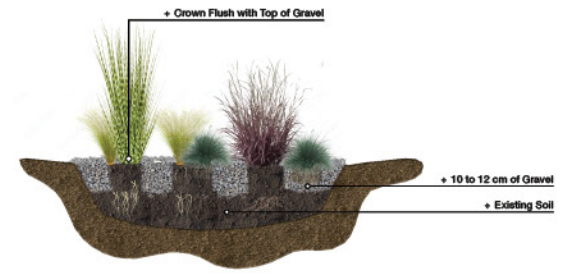


## + Level 2 (+8m)

### + Dry Grasses

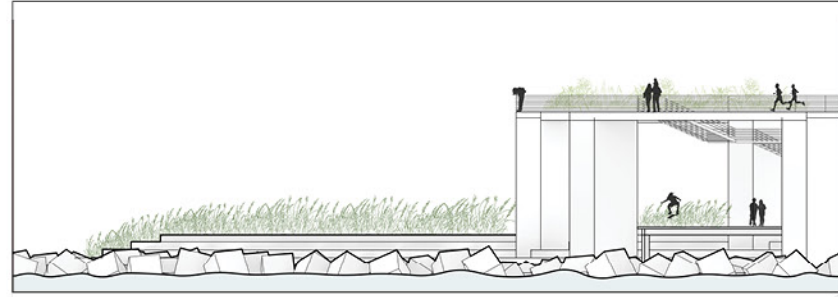


Attributes	Colors
<ul style="list-style-type: none"> <li>☀️</li> <li>🌿</li> </ul>	<ul style="list-style-type: none"> <li>+ Fall</li> <li>+ Winter</li> <li>+ Spring</li> <li>+ Summer</li> </ul>
<ul style="list-style-type: none"> <li>🌿</li> <li>🌿</li> </ul>	<ul style="list-style-type: none"> <li>+ Fall</li> <li>+ Winter</li> <li>+ Spring</li> <li>+ Summer</li> </ul>
<ul style="list-style-type: none"> <li>☀️</li> <li>🌿</li> </ul>	<ul style="list-style-type: none"> <li>+ Fall</li> <li>+ Winter</li> <li>+ Spring</li> <li>+ Summer</li> </ul>
<ul style="list-style-type: none"> <li>🌿</li> <li>🌿</li> </ul>	<ul style="list-style-type: none"> <li>+ Fall</li> <li>+ Winter</li> <li>+ Spring</li> <li>+ Summer</li> </ul>

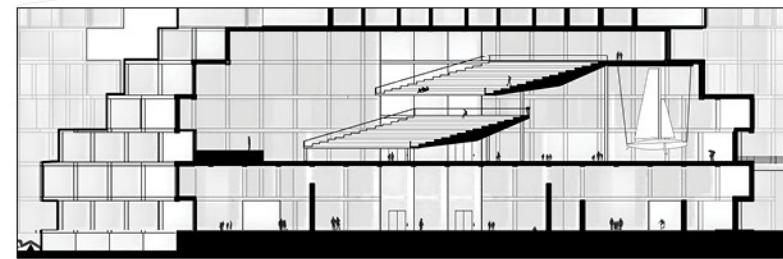
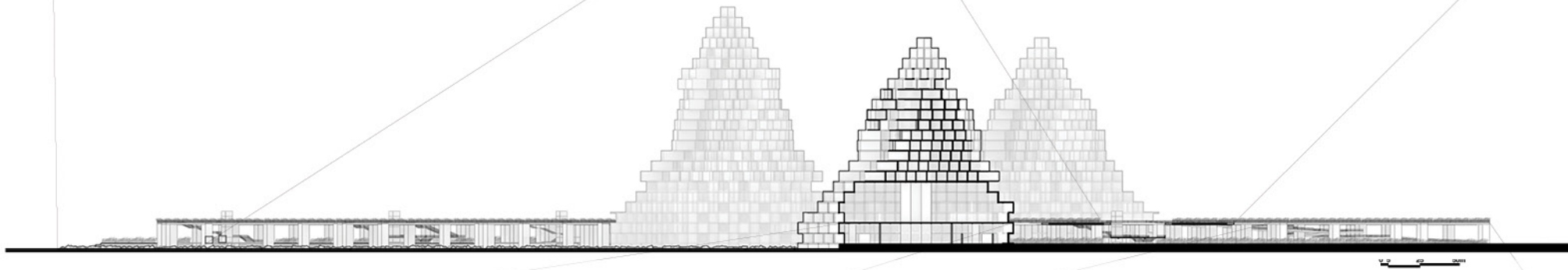


+ Perspective above the net where visitors can meander around and explore the dry grass landscape.

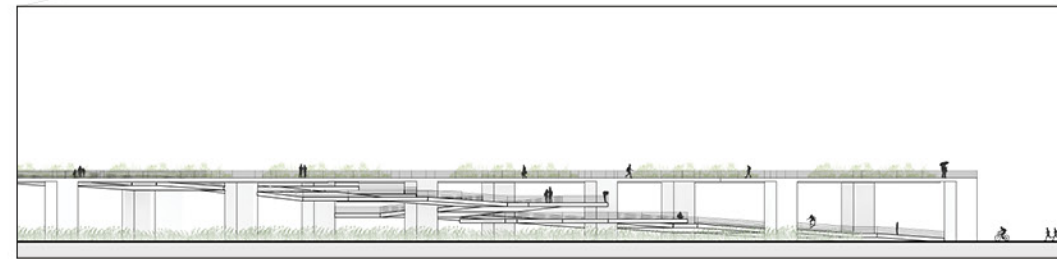
+ Reduced Breakwater Infill & Shore Condition



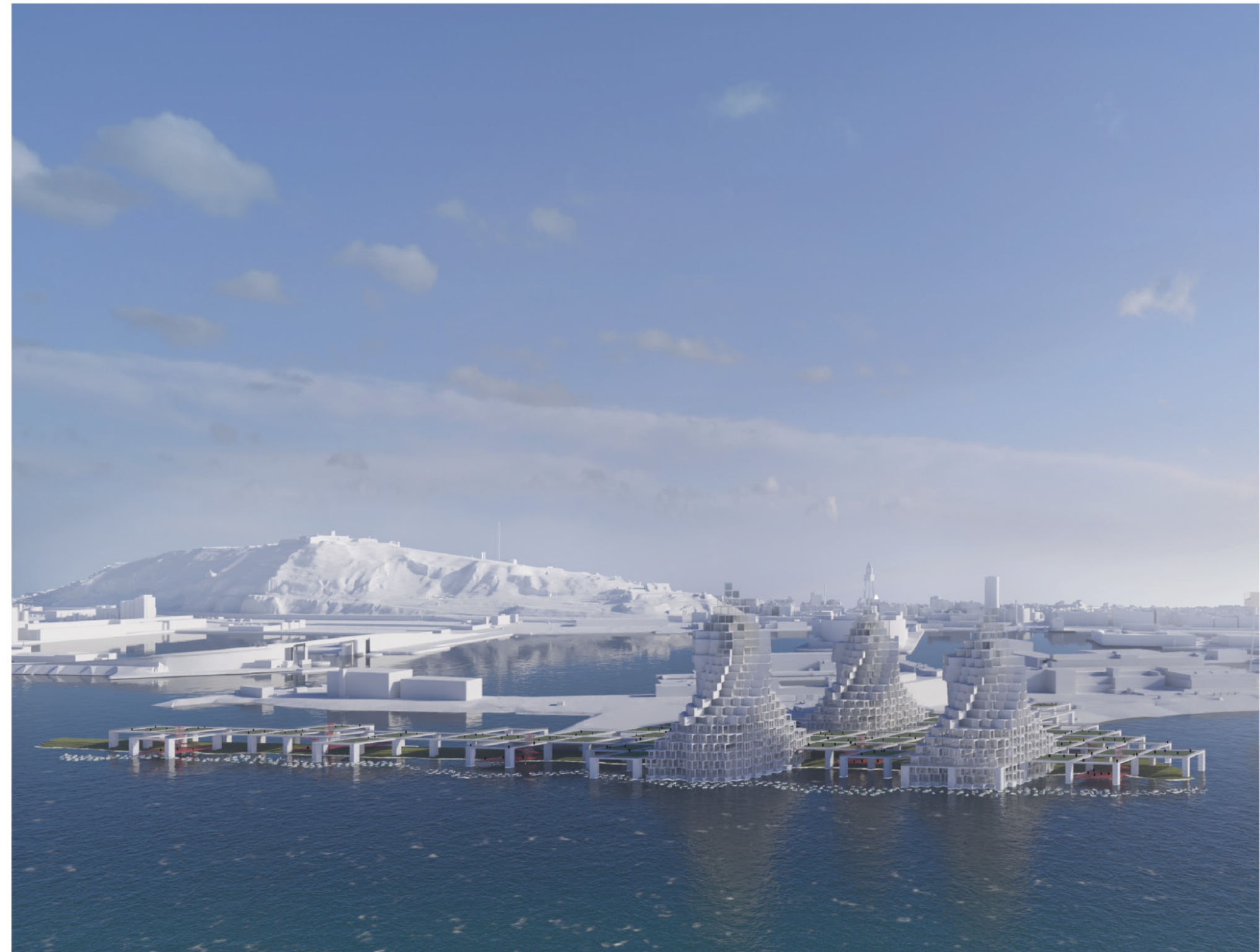
+ Interaction Between Landscapes



+ Auditorium & Team Venue



+ Ramping Up To The Net

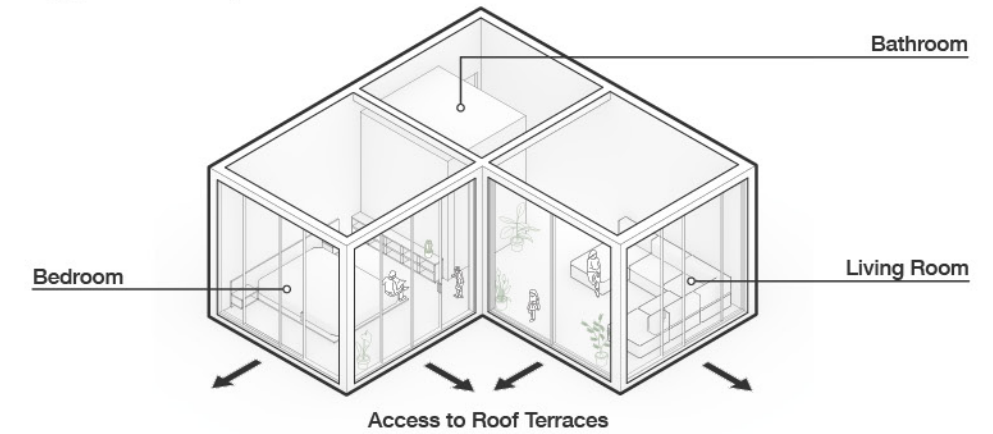




**+ Typical Cup Residence Floor**



**+ Typical Cup Residence**



+ Perspective inside a typical America's Cup Residence overlooking the other two towers & Montjuïc Hill.