

Shed

photography & creative direction
by Nguyen Ton Nu Sao Khue
styling by Ariana Crispin
talent Tallisen Soong Smith



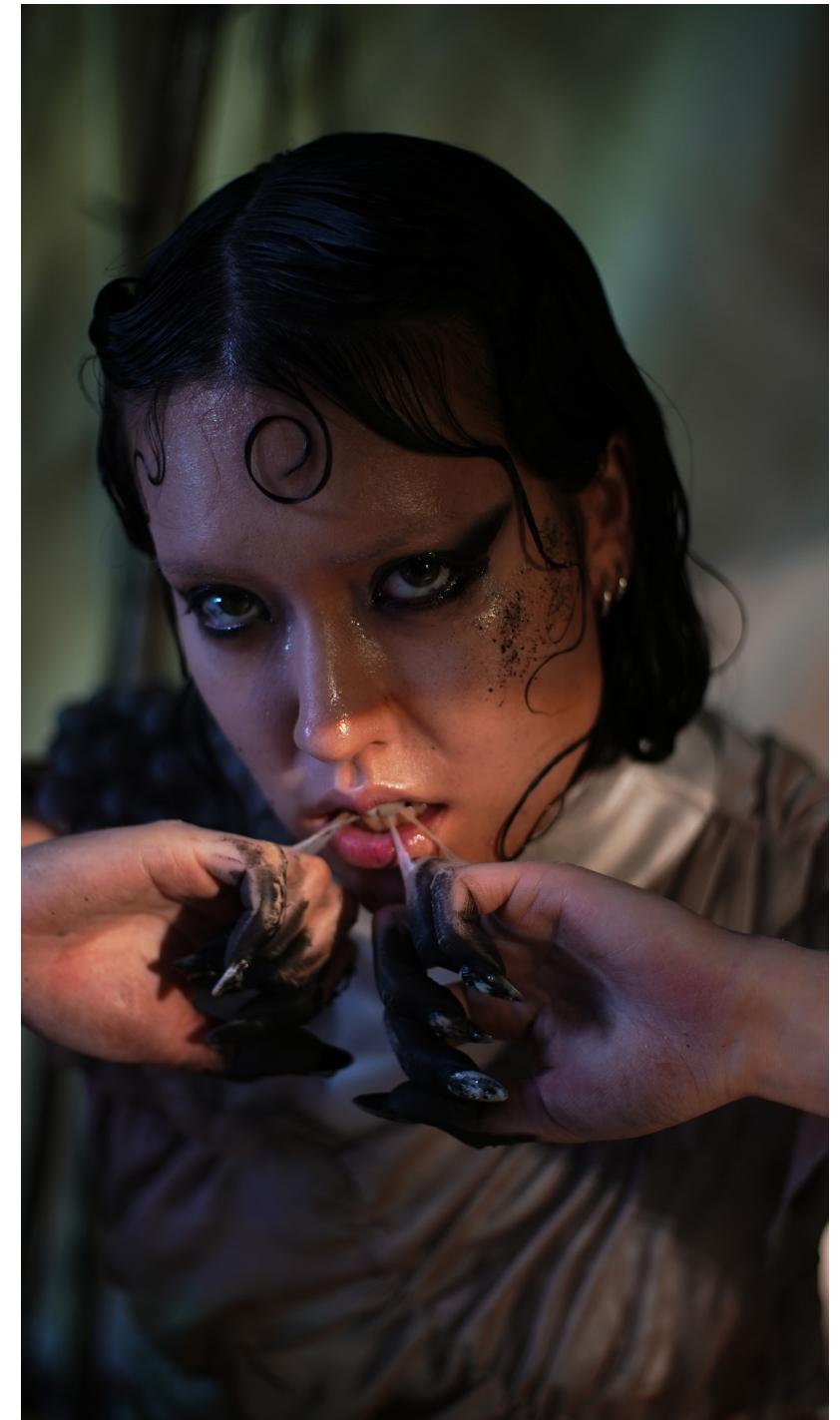


set styling by Leigh Phan





lighting by Genki Goto & Taitania Higuchi



hair & makeup by Kayla Moffatt

the p r o c e s s
set prep day

The entire process involved some light problem-solving, some heavy lifting, and a lot of improvising with whatever was free or could be carried by two people.



We found dried branches about our height by Gilmore Station and carried them into the SkyTrain. With branches secured, a 25kg bag of sand was hauled from Home Depot via transit, rolled in a suitcase, then hand-carried ten minutes under the sun to campus. The set was assembled the day before as a dry run, allowing for spatial and material adjustments.

A decision was made to stain the muslin backdrop using coffee for tonal depth, while the ceramic studio offered free reclaimed clay to anchor the branches. This process was an exercise in creative logistics, piecing together an environment from raw, found, and repurposed materials that reflect the underlying theme of shedding and re-formation.



Lighting was handled by a separate team. One used faux foliage on a fence; the other with iridescent cellophane.

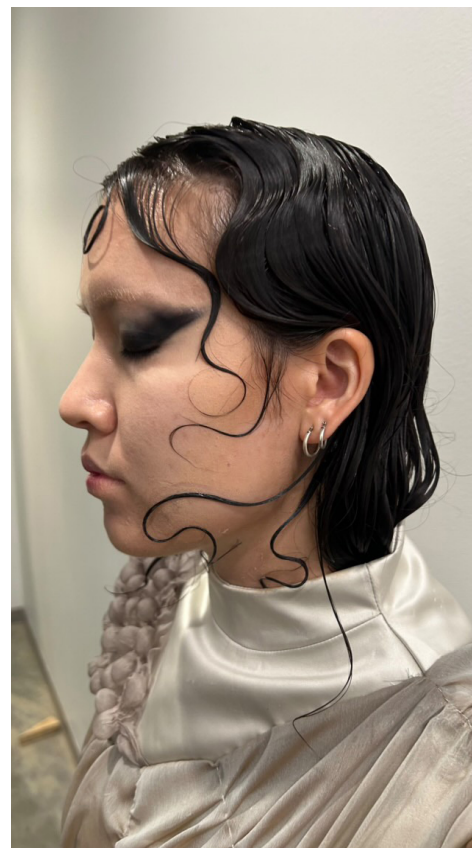
lighting



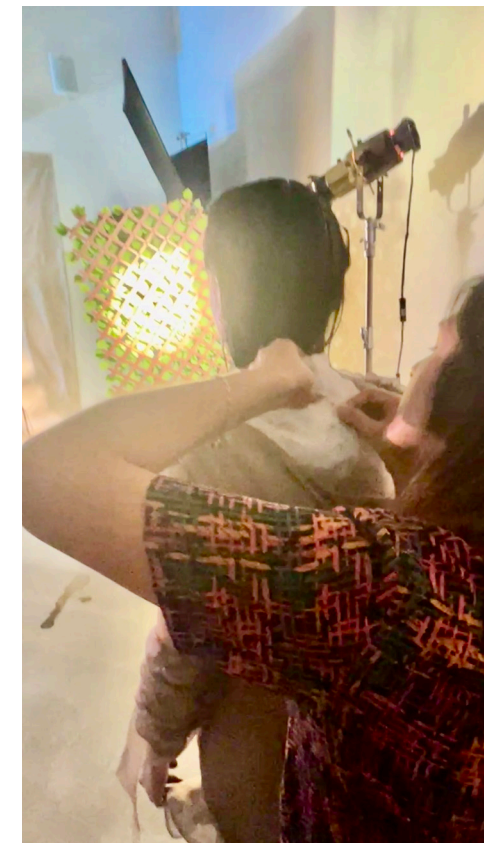
fitting

The garment was completed in just a week, unusually fast for the designer. Gray chiffon was gathered, ruffled, and with a shibori like technique, manipulated to mimic dry, shedding skin. A contrasting satin neckpiece in a brighter tone represented the emergence of new skin.

For the makeup, a bold, centered smoky eye with lip tones to match complement the sleek swirl hair and translucent look.



the p r o c e s s



*&
makeup*



the photoshoot



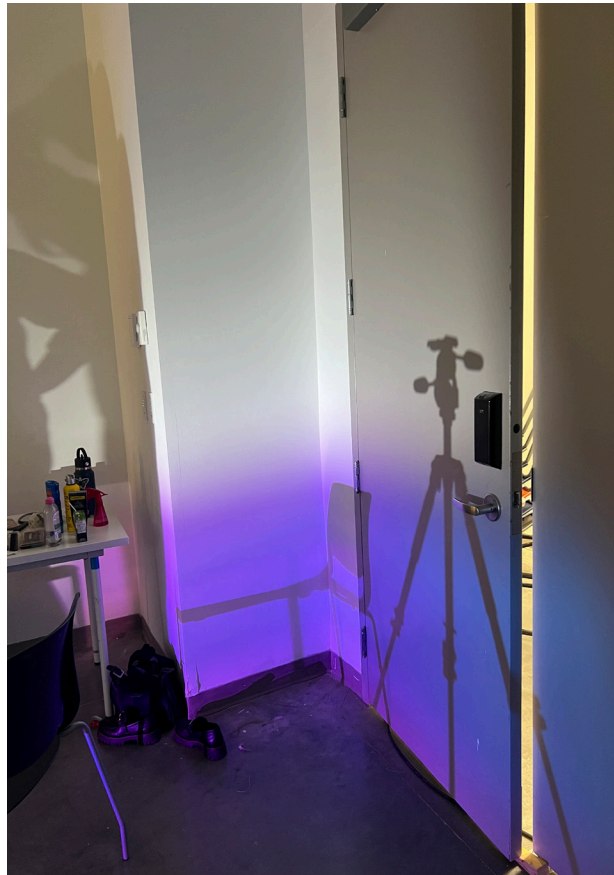




...dding occurs
...s stages of a
... life cycle, with
...shedding process
...g place multiple
...s throughout its
...ime. As a creature
...remarkable natural
...auty, even the skin
...sheds is artistically
...tricate, showcasing
...tunning details that
...eflect a high level of
...rtistry. In many cultural
...ariations, the image
...f a snake shedding its
...kin symbolizes concepts
...transformation, rebirth,
...d renewal—emblematic
...a fresh start and
...ning to the origin.
...purpose of this
...shoot is to visually tell
...story of human beings
...ntly reinventing
...elves, starting
...after every cycle—
...er it's the end of
...ation, an emotion,
...experience. This
...t is a fusion
...several artistic
...ents, including
...ography, lighting,
...ng, makeup, special
...ffects, and set styling.
...remember from a
...ocumentary that
...nakes often seek
...out areas with dense
...layers of branches to
...expedite the shedding
...process. The sharp tips
...of the branches help

end.

publication design by Leigh Phan
on unceded Musqueam, Squamish,
and Tsleil-Waututh territories.





Shed was created as part of a midterm publication project at Emily Carr University, July 2025. This edition consists of two hand-assembled copies. Printed in-house on laser and inkjet printers, using thread and found textures.

