

Connect, Analyze, Transform – with IIoT Excellence

For more information, visit: www.supOS.ai



supOS

Data Collector

Unified Namespace

Frontline App Builder

AI Toolkit

01 Data Collector

02 Data Lake

03 Unified Namespace

04 Industrial App Space

05 AI Toolkit

06 Frontline App Builder

07 All in One Platform

08 SaaS & On-Premise

X-Collector

Experience seamless data collection across diverse protocols with supOS.

No.	Driver Name	Driver Description	Author	Version	Release time
1	OPC DA	All devices which support OPC DA protocol	Bluetron	2.0	2020-11-07
2	OPC UA	All devices which support OPC UA protocol	Bluetron	3.0	2020-11-10
3	MODBUS ...	All devices which support MODBUS RTU protocol	Bluetron	2.0	2020-11-23
4	MODBUS ...	Deprecated, not recommended, please use MODBUS TCP2 in...	Bluetron	2.0	2020-11-23
5	MODBUS ...	All devices which support MODBUS TCP/IP protocol	Bluetron	2.0	2023-08-09
6	DDE	Dynamic data exchange mechanism DDE protocol	Bluetron	2.0	2021-06-18
7	BACnet TC...	All devices which support BACnet TCP/IP protocol	Bluetron	1.0	2022-04-13
8	HJ212 2017	HJ212-2017 protocol	Bluetron	2.0	2021-09-01
9	HJ212 2005	HJ212-2005 protocol	Bluetron	1.0	2022-02-10
10	DLT645	DL/T 645-2007 protocol	Bluetron	1.0	2021-11-02
11	DLT698	DL/T 698-2017 protocol	Bluetron	1.0	2022-05-09
12	SQL2DB	Oracle, SQL Server, MySQL databases	Bluetron	1.0	2020-12-01
13	SQL2DB2	Oracle, SQL Server, MySQL databases,same function with S...	Bluetron	1.0	2022-03-17
14	ODBC	Access databases with ODBC	Bluetron	2.0	2021-10-20

- **No-code Data Flow Canvas: Drag-and-drop to connect and process data. Built-in ChatGPT to address code issues through conversation.**

Current temperature in Singapore

It is currently 30.78 degrees Celsius in Singapore.

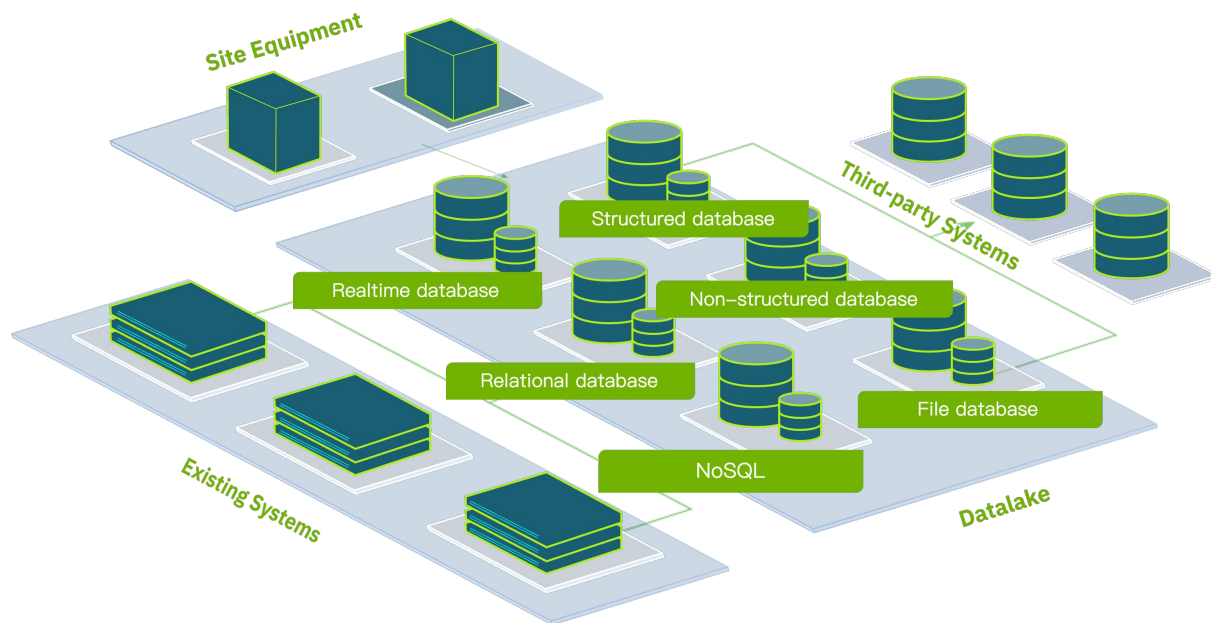
Sender:
<458744713@qq.com>

Time:
Tue, May 21, 2024, 4:49 PM

Share to Chat

supLake

Built-in high-performance, modern time-series database, supporting MQTT, Websocket, API integration methods, and various aggregation queries.

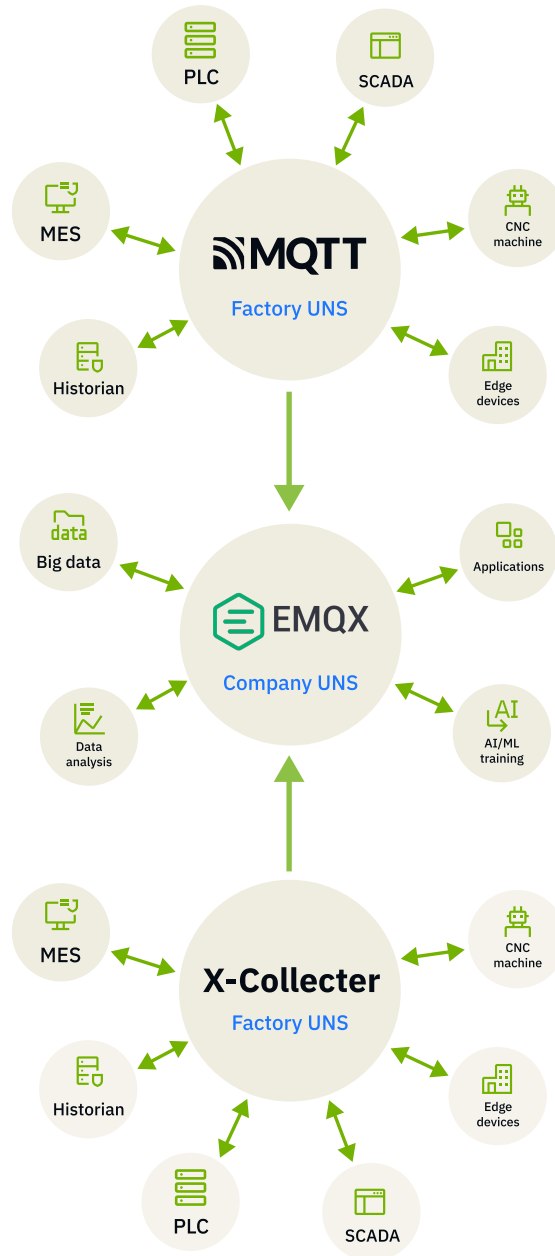


Single Node Performance

- Max. 50,000 objects
- Up to 1,000,000 tags
- Up to 200,000 millisecond data points
- Max. 20 collectors or 20 third-party gateways

Unified Namespace

Plantwide data publishing and subscription through MQTT, realize single source of truth.



MQTT's Pub-Sub mechanism broadcasts any changes to all subscribers

Lightweight

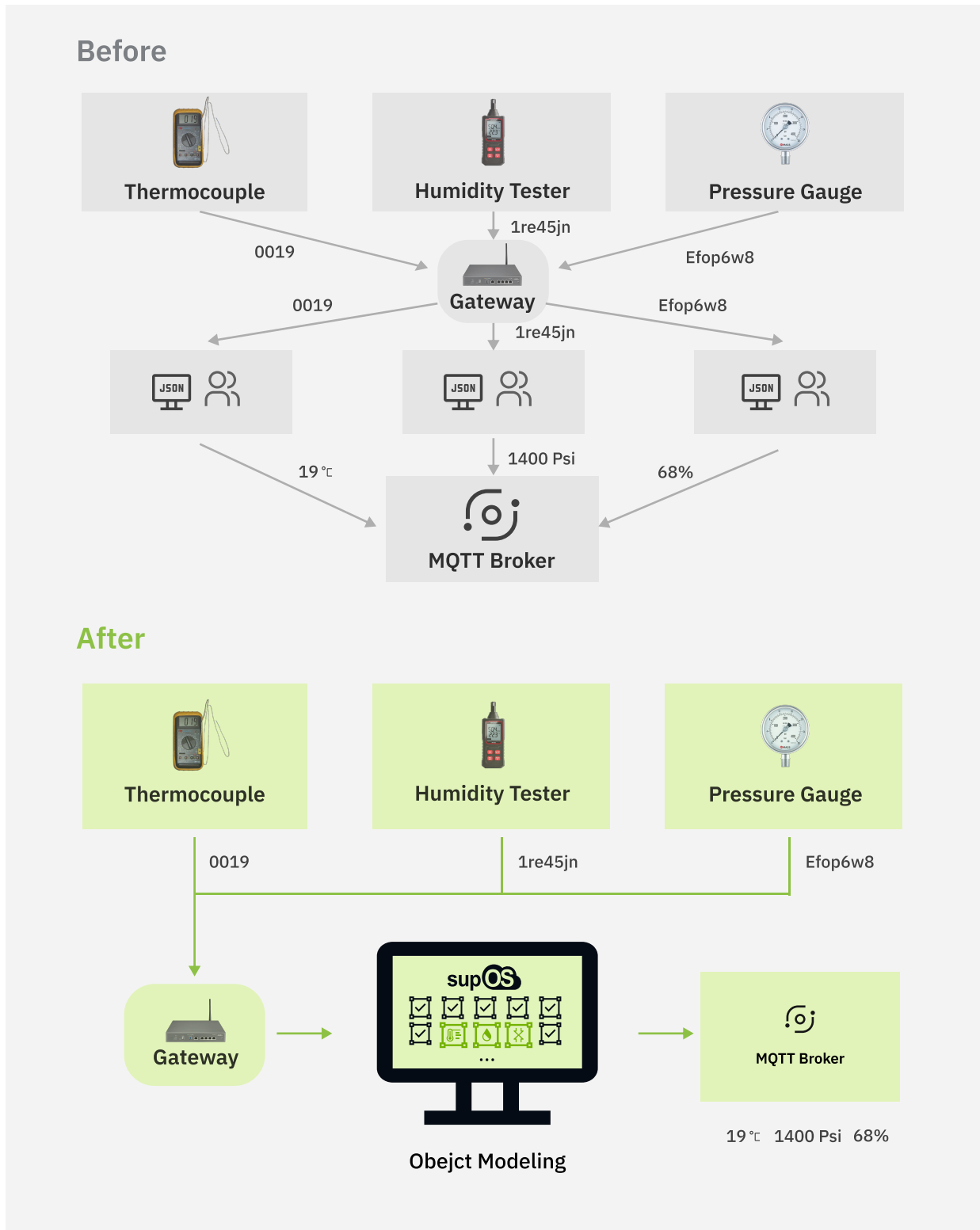
Fast

Low Latency

Data Contextualization

Support ISA95 and Sparkplug B based data contextualization. Get your data into topic in seconds.

- One-click object modeling for industrial dynamic and static equipment, along with other built-in templates.



Industrial App Space

Revolutionize your industry with our digital solutions, blending **Unified Namespace**, **AI**, and **Simulation** for unmatched operational efficiency and innovation.

Generative UI	Dashboard	LEAN
AI Agent: Chat with Database	UNS	GxP

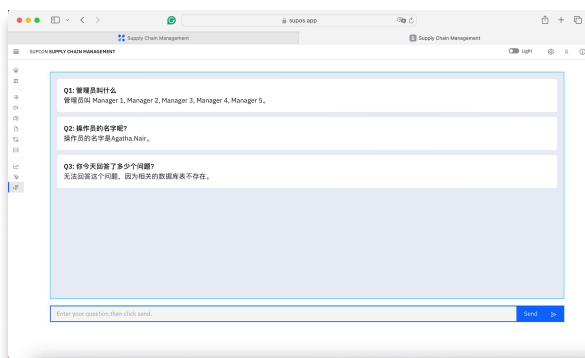
Innovation

In addition to standard features, our apps stand out with exceptional uniqueness.

- **SCM(Supply Chain Management)**

Discrete Event Simulation

Analyzes historical data to predict future trends and dynamically updates the 3D model to reflect insights.



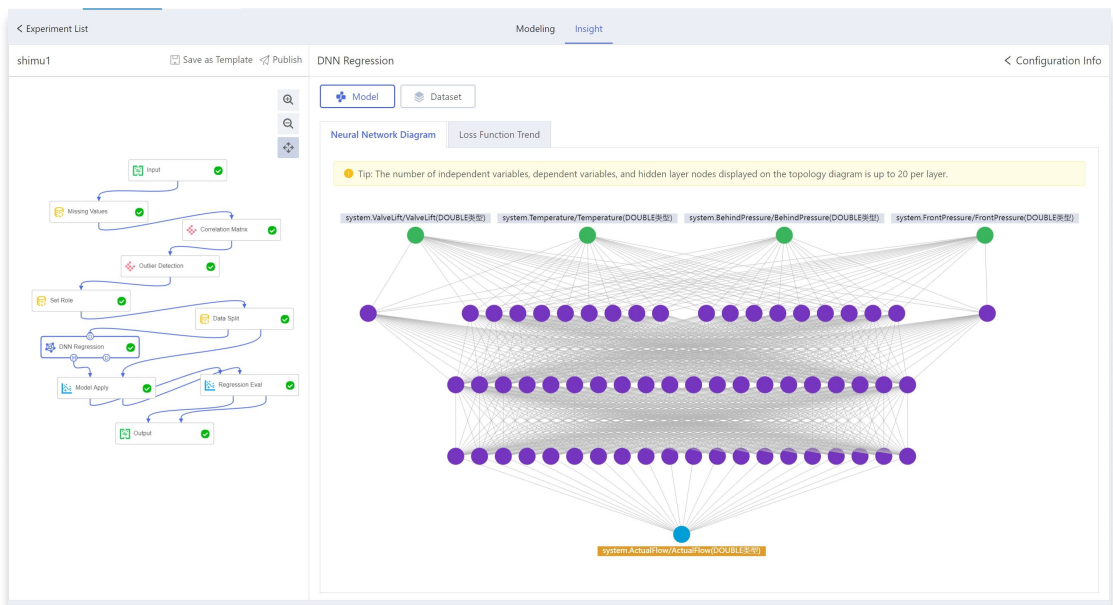
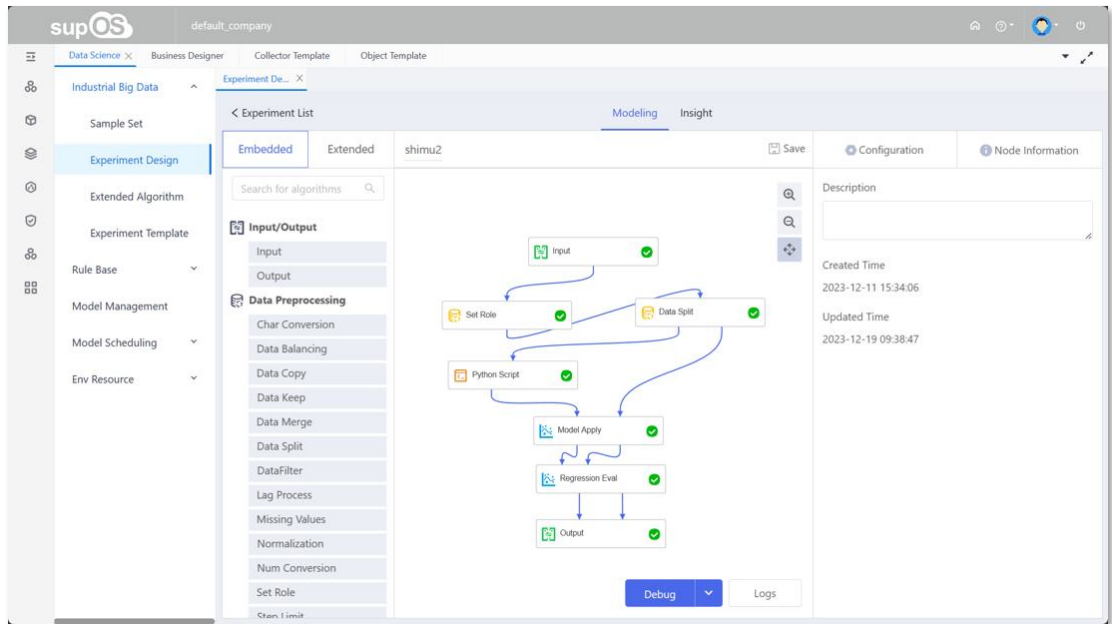
AI Chat to Database

Integrates large language models (LLM) for real-time, natural language querying of warehouse data.

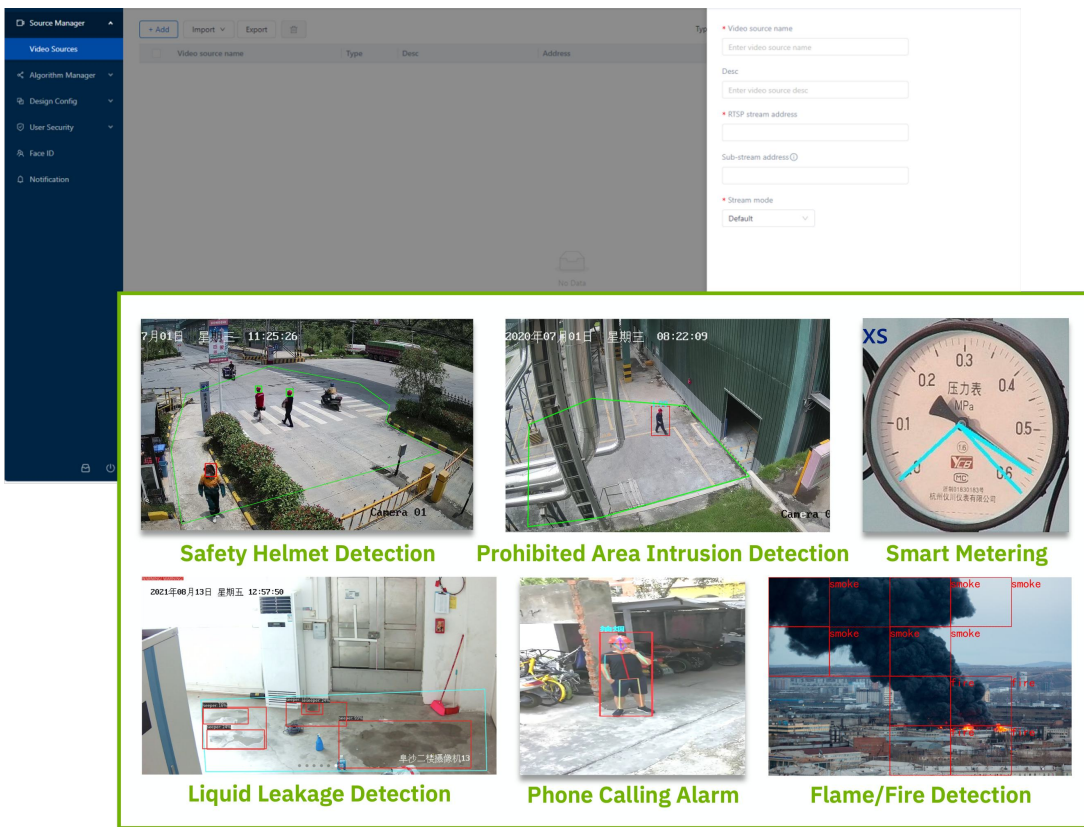
AI Toolkit

Harnessing the full potential of data analysis through Machine Learning.

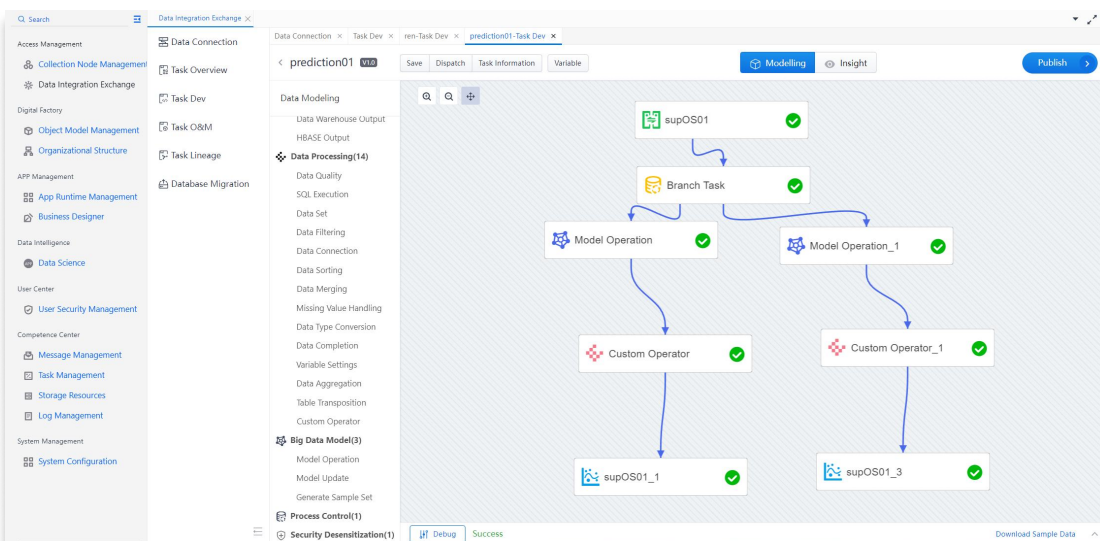
- **X-BD: Support various algorithms with drag-and-drop interfaces and built-in calculator models.**



- **X-Edge: Access edge device video streams, configure presets, and apply algorithms for machine vision analysis.**



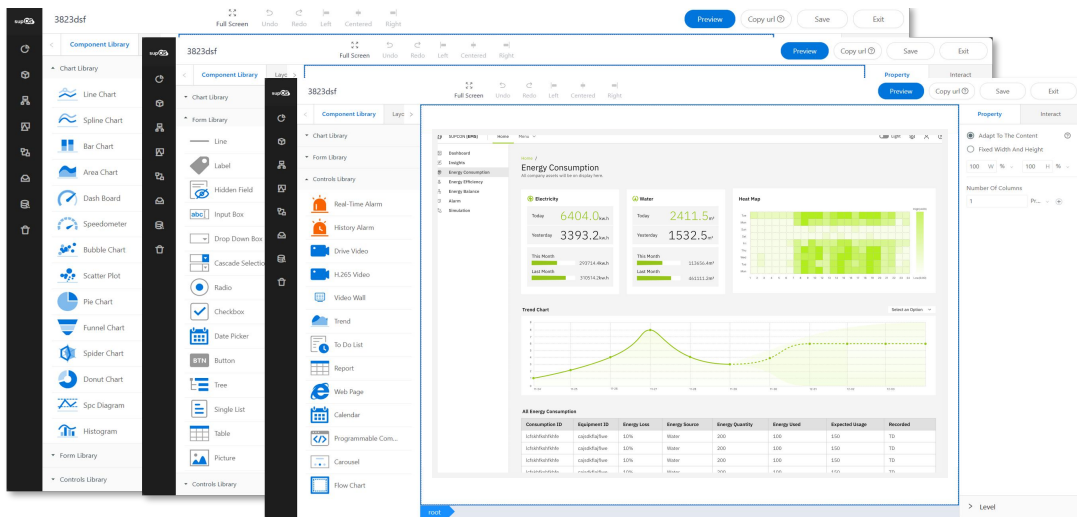
- **X-ETL: Auto-update algorithm models through real-time data connectivity.**



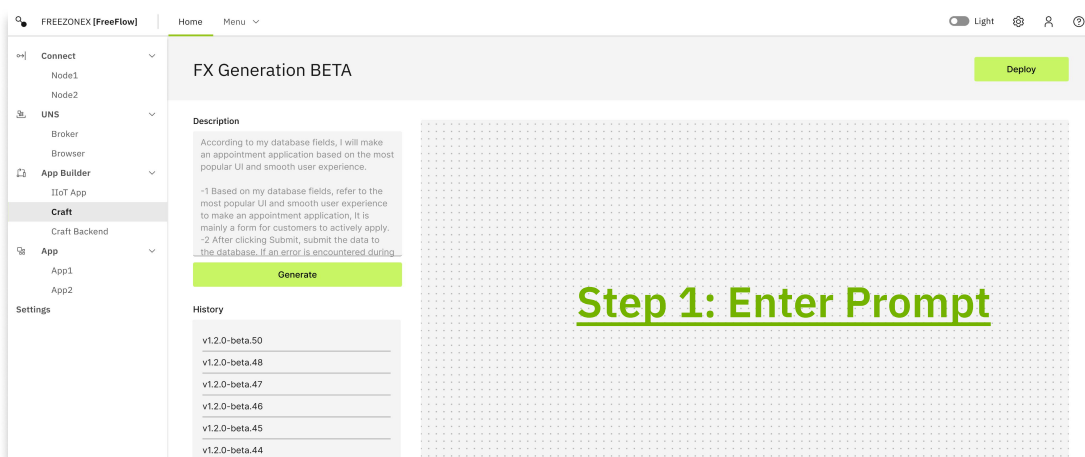
Frontline APP Builder

Utilizing the low-code development method and generative UI to develop a myriad of applications, everyone could be a programmer. Especially designed for SCADA, HMI, mobile interfaces.

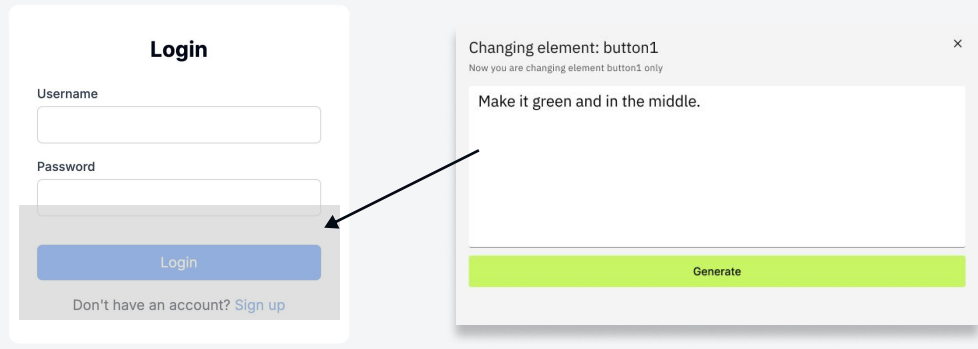
- **X-IDE: Provides extensive element libraries for charts and equipment units, streamlining the creation of dashboards, flow charts, production tickets, and workflow.**



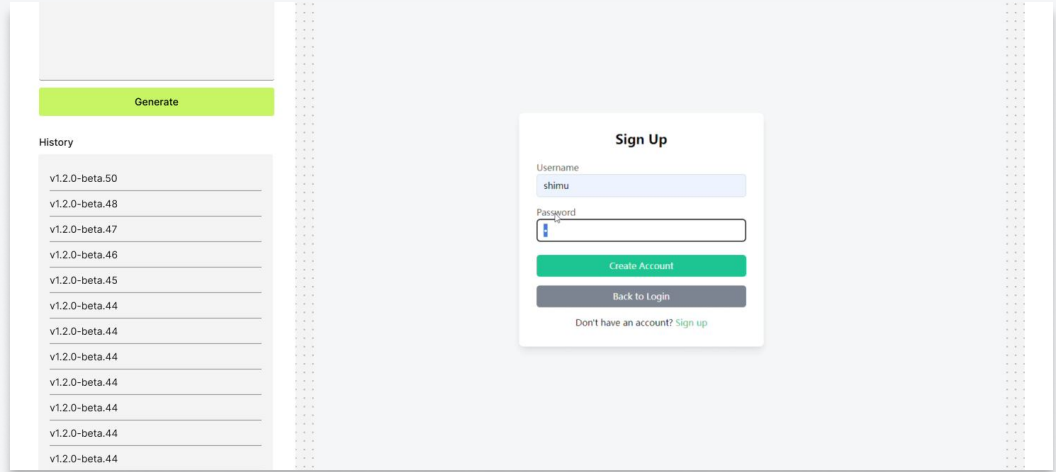
- **Generative UI: Natural language-driven interface design seamlessly bridge the front and back ends.**



Step 2: Fine-tuning



Step 3: Generate the final page



You Can Also

Equipment Information

Name	Type	Status	Energy Type	Volume	Electric	Pressure	Temperature	Actual Size	Standard Size	URL	Create Time
CMC1	Hardware	Active	electricity	12	5	1	34	65	65	http://192.168.31.70:8080/EquipmentDetail	2024-07-09 10:00:00.000000000
CMC2	Hardware	Pending	gas	12	5	1	59	60	60	http://192.168.31.70:8080/EquipmentDetail	2024-07-09 10:00:00.000000000
CMC3	Hardware	Active	electricity	120	5	1	68	12	12	http://192.168.31.70:8080/EquipmentDetail	2024-07-09 10:00:00.000000000
CMC4	Hardware	Active	electricity	12	5	1	60	65	65	http://192.168.31.70:8080/EquipmentDetail	2024-07-09 10:00:00.000000000

Table Editor

Table Name	Table ID	Table Type	Table Status	Table Description	Table Columns	Table Actions
Equipment	Equipment	Table	Active	Equipment Information Table	Name, Type, Status, Energy Type, Volume, Electric, Pressure, Temperature, Actual Size, Standard Size, URL, Create Time	View, Edit, Add, Delete
Users	Users	Table	Active	Users Table	Username, Password, Email, Phone, Role	View, Edit, Add, Delete
Products	Products	Table	Active	Products Table	Product Name, Price, Stock, Category	View, Edit, Add, Delete

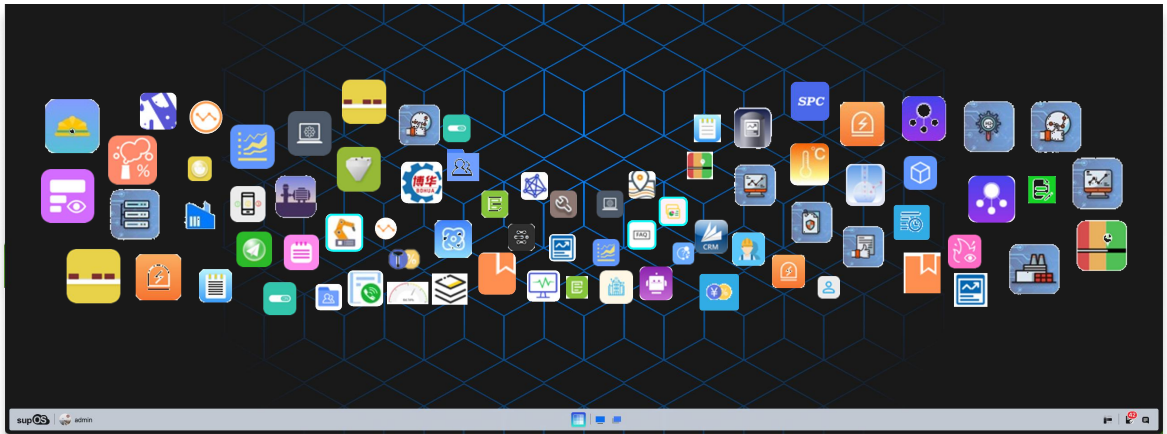
Generate redirects to other links

Generate connection with the database

All in One Platform

Secure and simple access to the connected industry.

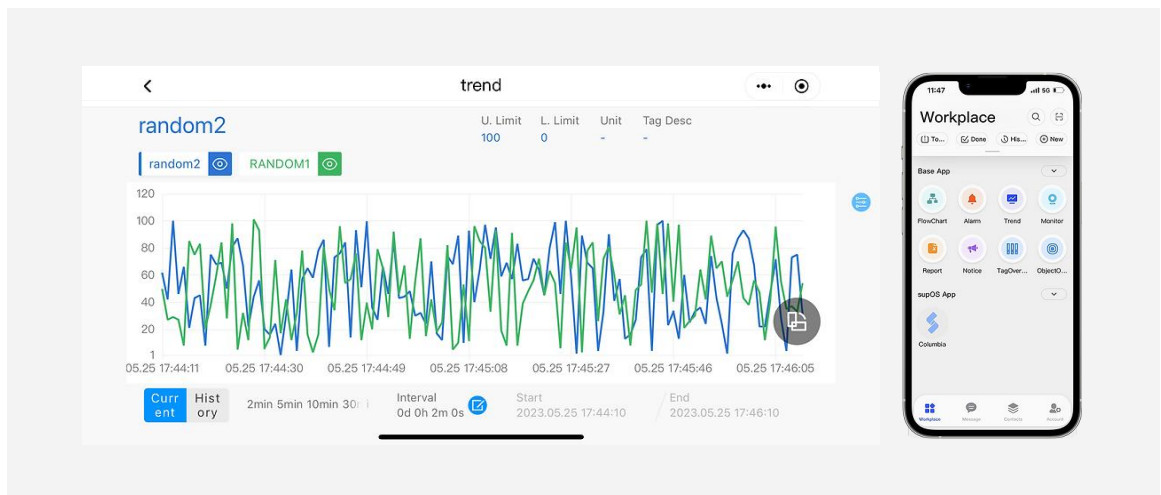
- **Unified Workbench:** Seamlessly integrate, utilize, and manage all applications and software from a centralized platform. Customize your desktop workspace to suit your needs and preferences.



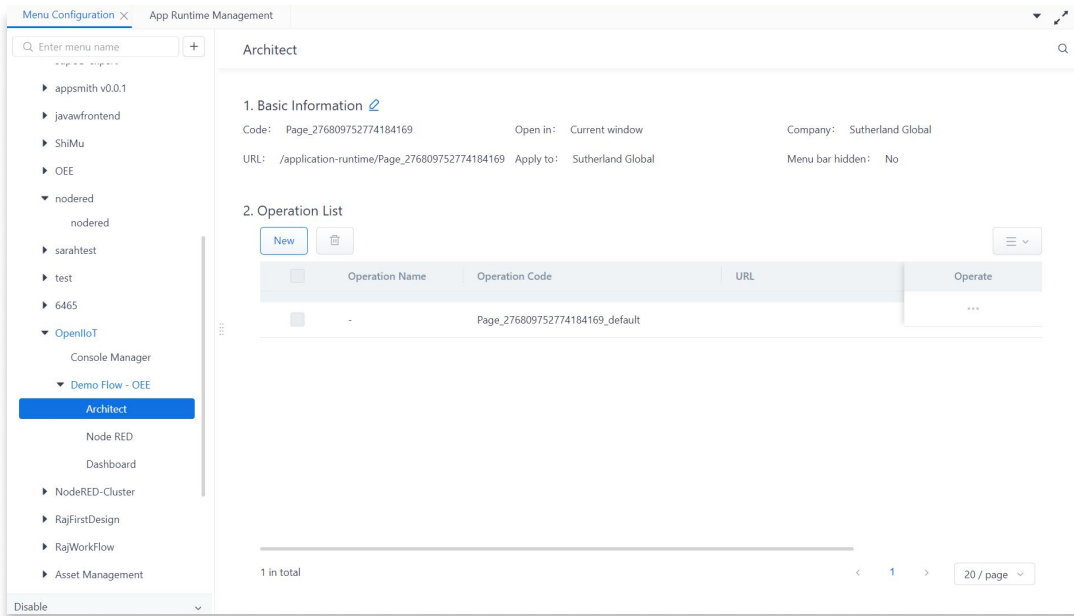
- **Integration with various mainstream applications, including AWS, Google sheets, SAP, Slack, Discord, and MS365.**



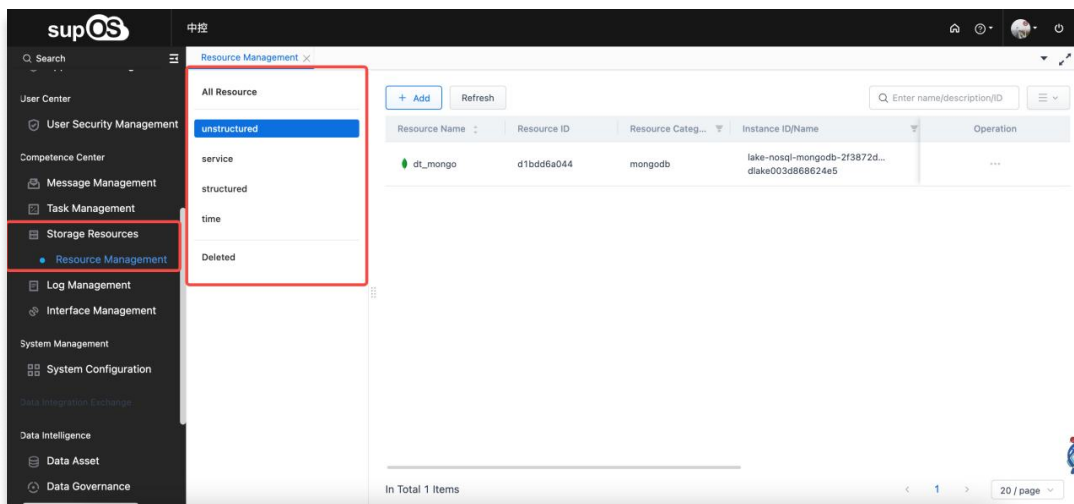
- **Access all applications on mobile.**



- **Unified Access Authentication: No need to build application access control modules from scratch.**



- **Unified Resource Management: Full lifecycle resource scheduling includes development resources, login control, task management, interface management, system configuration, and more.**

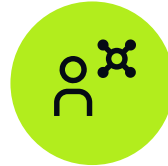


SaaS & On-Premise

We provide both SaaS and subscription-based private deployment options.



SaaS



Private Deployment

Packages

		Dev	Data Centeric	Advanced
Sizing	supLake Tags	20000	50000	50000
	Concurrent License	50	200	200
	X-Collector	2	3	3
Feature	supLink	✓	✓	✓
	X-IDE	✓	✓	✓
	X-BD			✓
	X-Edge			✓
	X-ETL		✓	✓
	X-DAM		✓	✓
	FreeFlow	✓	✓	✓
	API Gateway	✓	✓	✓
Service	Online Resources	✓	✓	✓
	On call technical support and ticket response within 4hrs			✓

The package list showcases the On-Premise deployment option.
For more information, please contact sales@freezonex.io.