



Fact Sheet

Find your candidate, whatever the target demands

PHAGE DISPLAY | MAMMALIAN DISPLAY | SINGLE B-CELL | BI-/MULTI-SPECIFICS



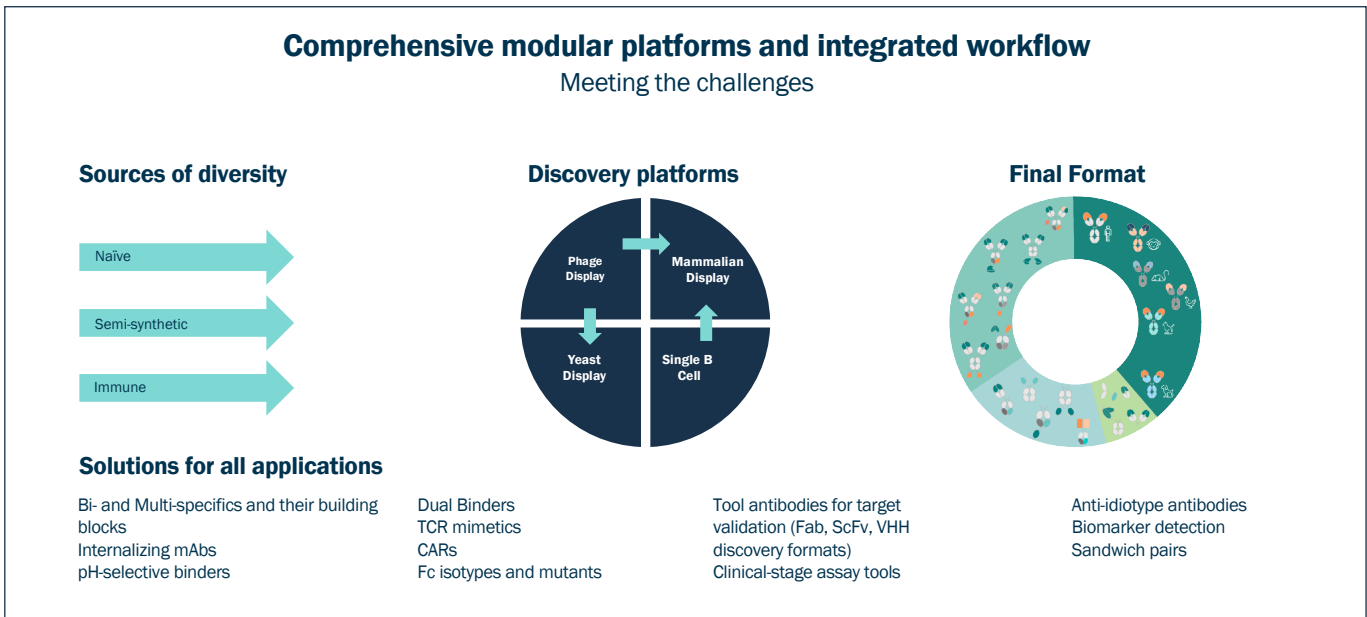
MultiPath Discovery is FairJourney Bio's integrated antibody discovery suite – engineered to deliver developable leads, not just hits

As an antibody discovery expert with more than 1,400 completed projects and 19 partner assets in clinical trials or on market, FJBio combines naive, semi-synthetic and immune libraries with phage, mammalian, yeast and single B-cell platforms in a single integrated and customisable workflow. The result: The most optimal path to candidates for your programme, with developability built in from the start– not addressed after a failed lead. Any target, any format.

BACKGROUND

Why partner with FJBio for MultiPath Discovery

<p>Format-optimised from day one</p> <p>ScFv, Fab, VHH, VHH-Fc, biparatopic and IgG formats – your biology is leading, no platform constraints.</p>	<p>>5,000 libraries generated</p> <p>Track record across naive, semi-synthetic, immune and bespoke library strategies, spanning multiple species and donor pools.</p>	<p>>5,000 libraries generated</p> <p>Patent-protected mammalian display selects for developability, CMC- and functional properties simultaneously during discovery, not after.</p>
<p>Integrated single B-cell</p> <p>Natively paired VH–VL recovery from 10⁶–10⁷ B-cells per run, including human patient samples.</p>	<p>Tough-target ready</p> <p>Internalising mAbs, pH-selective binders, dual binders, TCR mimetics, CARs, Fc isotypes and mutants.</p>	<p>Under one roof</p> <p>Discovery, characterisation, engineering and production handled by one team in one workflow.</p>



1,400+

COMPLETED PROJECTS

5,000+

LIBRARIES GENERATED

19

 PARTNER ASSETS IN CLINIC
/ ON MARKET

460,000+

 REAL-WORLD SEQUENCES
SOLVED

MultiPath Discovery – Capability Detail

Library types & diversity

- **Naive libraries:** $>10^{10}$ diversity; ScFv, Fab and VHH formats; kappa & lambda repertoires; common light chain option
- **Semi-synthetic libraries:** up to 10^{11} diversity; ScFv format; common light chain option
- **Immune libraries:** 10^6 – 10^9 diversity; phage display and single B-cell antibody recovery; multiple species including human patients
- **Named libraries:** SuperHuman 2.0 ($>76B$ clones, hard-wired for developability), Cosmic (100B clones, optimised for low immunogenicity), Full-framework libraries (up to 50B clones), Explorer (rapid affinity maturation)

Display technologies

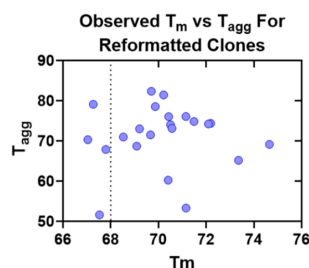
- **Phage display:** multiple binder formats; solid-phase, in-solution, cell panning and pH panning
- **Mammalian display:** 10^6 – 10^7 variants per library; display level correlates with CMC properties; patent protected worldwide
- **Yeast display:** 10^7 – 10^8 variants per library; multi-parametric selections in a single workflow (affinity, dual-binding, pH, cross-reactivity)
- **Named libraries:** natively paired VH–VL recovery from the full B-cell immune repertoire; surface Ig and secretory Ig populations

Application breadth

- Bi- and multi-specifics and their building blocks
- Internalising mAbs, pH-selective binders, dual binders, TCR mimetics, CARs
- Fc isotypes and mutants for tailored effector function
- Tool antibodies for target validation, clinical-stage assay tools, anti-idiotypic antibodies, biomarker detection, sandwich pairs

Examples of how FJBio addresses antibody discovery challenges

Against SIRP α , a high-homology target (80% cyno; 87% SIRP β ; 81% SIRP γ), the Cosmic Library delivered broadly-binding, developable leads: 132 of 190 clones were blockers, 22 functional IgGs at low nM, 82%/86% passing T_m / T_{agg} thresholds across 21 epitope bins.



	V1	V2	V8	Cyno-SIRP α	SIRP-Beta	SIRP-Gamma	Ab Count
Bin1							154
Bin2							79
Bin3							21
Bin4							18
Bin5							18
Bin6							15
Bin7							11
Bin8							8
Bin9							5
Bin10							4
Bin11							3
Bin12							2
Bin13							1
Bin14							1
Bin15							1
Bin16							1
Bin17							1
Bin18							1
Bin19							1
Bin20							1
Bin21							1

**One platform, every modality.
Discovery that starts with the clinic in mind, not in retrospect.**

Let's talk about your programme

Bring your target, your timeline and your tough questions to a scoping conversation.

info@fjbio.com | fjbio.com

Porto · Cambridge · San Diego



www.fjbio.com
info@fjbio.com