

# STORMTECH®

nurtured by nature



Spring and Summer  
Collection 2024







**STORMTECH®**

nurtured by nature

## Fashion for Every Forecast

---

Crafted from lightweight technical fabrics, our Spring & Summer 2024 Collection provides a seamless transition across all seasons. These styles are designed to enhance your experience in warmer months, while offering ample protection against cooler weather. Incorporating smart features such as moisture-wicking H2X-DRY® fabrics and ultralight thermal insulation, our garments allow you to adjust to variable climate conditions.

Inspired by the rugged landscapes of the Pacific Northwest and refined in Vancouver's cool, urban cityscape, STORMTECH Performance Apparel has outfitted explorers and seekers for extreme, unpredictable weather and conditions since 1977. Fueled by our passion for the outdoors, we build durable, functional, contemporary clothing and deliver quality and innovation year after year.

At STORMTECH, we believe in environmental stewardship, with technologies that lessen our impact on our natural environment. STORMTECH creates timeless, high-quality products designed to extend product life and minimize environmental impact. We back up our commitment to quality workmanship with a 5-year warranty, and have built out a sustainable product care program to extend product life and performance.

Sustainable practices are ever-evolving, and we are committed to minimizing our environmental impact and enhancing sustainable practices through responsible design, sourcing, and daily business operations. We also support youth through our 1:1 initiative, and support worker health and safety at all of our factories and office locations.

STORMTECH is a one-stop, full-service partner uniquely structured for the corporate marketplace, offering a comprehensive array of in-house decoration services, a robust e-commerce website and a highly-skilled customer service team to support and fulfill your orders.

Visit us online or connect on social media.

STORMTECH® Performance Apparel





## TABLE OF CONTENTS



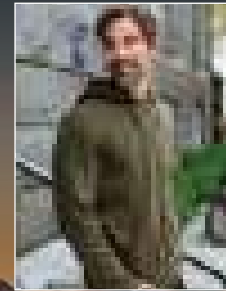
**2**  
PREMIUM POLOS



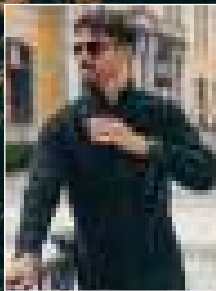
**20**  
PREMIUM TEES



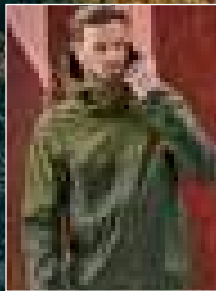
**38**  
PERFORMANCE  
SHIRTS



**42**  
PERFORMANCE  
HOODIES



**58**  
PERFORMANCE  
LAYERING



**70**  
TECHNICAL SHELLS



**86**  
TECHNICAL  
SOFTSHELLS



**91**  
LIGHTWEIGHT  
THERMAL SHELLS



M'S MISTRAL HEATHERED POLO SPL-1

# STORMTECH Premium Polos

Polos that work as hard as you do. As one of the most in-demand and versatile wardrobe items, they are that essential addition you just can't live without.

Whether you require high-tech performance with moisture management technology, industrial strength fabrics, or casual day-to-day attire, our on-trend range of Polos and Tees exude quality, style and a keen eye for fashion.



W'S FERRERA S/S POLO PSX-2W



ECLIPSE H2X-DRY® PIQUE POLO PG-1 | PG-1W



# Polos that work as hard as you do.

## SIENNA S/S POLO DXP-2 | DXP-2W

### Engineered Anti-Curl Collar

Non-roll construction prevents collar points from turning up or rolling

### STORMTECH H2X-DRY®

#### Moisture Management

Draws moisture away from the skin, helping to maintain optimal body comfort

### Classic 3-Button

#### Placket

For classic polo styling

### Open-V

#### 2-Button

#### Placket (W's)

For classic polo styling

### Pure Earth by STORMTECH™

Made from Recycled Polyester for a reduced environmental footprint

**100% RECYCLED POLYESTER**

### Contoured

#### Seaming (W's)

Provides a closer to body fit and sleek silhouette

### UPF Rating 50+

Technology that protects the skin from the sun's rays

### Mechanical Stretch

Provides added comfort, flexibility and shape retention

### Dropped Back with

#### Hem Side Slits

At the bottom of side seams add fashion detail, comfort and ease of movement



# GALAPAGOS S/S POLO

DXP-3 | DXP-3W

Bringing our passion for design to a polo collection. The Galapagos Polo is built with an articulated action shoulder for superior comfort and unrestricted movement, coupled with a monochromatic print, H2X-DRY® Moisture Wicking technology, and UPF sun protection. Made from Recycled Polyester for a reduced environmental footprint.

## Engineered Anti-Curl Collar

Non-roll construction prevents collar points from turning up or rolling

## Classic 3-Button Placket (M's)

For classic polo styling

## STORMTECH H2X-DRY® Moisture Management

Draws moisture away from the skin, helping to maintain optimal body comfort

## Snag Resistant Fabric

Improves the snag resistance of the fabric, and leaves the garment looking new wear after wear

## Dropped Back with Hem Side Slits

At the bottom of side seams add fashion detail, comfort and ease of movement

## Pure Earth by STORMTECH™

Made from Recycled Polyester for a reduced environmental footprint  
**100% RECYCLED POLYESTER**

## Articulated Action Shoulders

Provide optimal range of motion

## Open-V 2-Button Placket (W's)

For classic polo styling

## Contoured Seaming (W's)

Provides a closer to body fit and sleek silhouette

## UPF Rating 50+

Technology that protects the skin from the sun's rays

## Mechanical Stretch

Provides added comfort, flexibility and shape retention

## Fabric Technology



## Fabrication

100% Recycled Polyester Double Pique, 5.13 oz/yd<sup>2</sup> (USA) / 174gsm (CDN)

## Men's Sizes

S-3XL (Dolphin S-5XL)

## Women's Sizes

XS-2XL

## Decoration Options



## PRICE

**\$55.00** CAD MSRP | **£33.00** GBP RRP | **€33.00** EURO RRP



M's & W's: Dolphin



M's & W's: Classic Blue



M's & W's: Bright Red

# SIENNA S/S POLO

DXP-2 | DXP-2W

Sublimated horizontal gradient stripe design with H2X-DRY® moisture management technology, and UPF sun protection. This performance polo delivers style and technicality for long-lasting comfort and performance. Made from Recycled Polyester for a reduced environmental footprint.

## Engineered Anti-Curl Collar

Non-roll construction prevents collar points from turning up or rolling

## Classic 3-Button Placket (M's)

For classic polo styling

## Pure Earth by STORMTECH™

Made from Recycled Polyester for a reduced environmental footprint  
**100% RECYCLED POLYESTER**

## Snag Resistant Fabric

Improves the snag resistance of the fabric, and leaves the garment looking new wear after wear

## UPF Rating 50+

Technology that protects the skin from the sun's rays

## STORMTECH H2X-DRY® Moisture Management

Draws moisture away from the skin, helping to maintain optimal body comfort

## Open-V 2-Button Placket (W's)

For classic polo styling

## Contoured Seaming (W's)

Provides a closer to body fit and sleek silhouette

## Mechanical Stretch

Provides added comfort, flexibility and shape retention

## Dropped Back with Hem Side Slits

At the bottom of side seams add fashion detail, comfort and ease of movement



## Fabric Technology



## Fabrication

100% Recycled Polyester Double Pique, 513 oz/yd<sup>2</sup> (USA) / 174gsm (CDN)

## Men's Sizes

S-3XL (Dolphin S-5XL)

## Women's Sizes

XS-2XL

## Decoration Options



## PRICE

**\$55.00** CAD MSRP | **£33.00** GBP RRP | **€33.00** EURO RRP



M's & W's: Dolphin



M's & W's: Classic Blue



M's & W's: Bright Red





## **TORRENTE S/S POLO**

STW-1 | STW-1W

This textured H2X-DRY® Moisture Management polo combines performance with top-caliber design. Artfully crafted features with set-in sleeves, a self-fabric collar and a classic button placket take looking great to new heights. Made from 50% Recycled Polyester for a reduced environmental footprint.



# TORRENTE S/S POLO

STW-1 | STW-1W

**3-Button Placket (M's)**  
Classic polo styling which can be fully buttoned up or down

**STORMTECH H2X-DRY® Moisture Management**  
Draws moisture away from the skin, helping to maintain optimal body comfort

**Pure Earth by STORMTECH™**  
Made from Recycled Polyester for a reduced environmental footprint  
**50% RECYCLED POLYESTER**

**UPF Rating 50+**  
Technology that protects the skin from the sun's rays

**Engineered Anti-Curl Collar**  
Non-roll construction prevents collar points from turning up or rolling

**Classic 4-Button Placket (W's)**  
For classic polo styling

**Snag Resistant Fabric**  
Improves the snag resistance of the fabric, and leaves the garment looking new wear after wear

**Mechanical Stretch**  
Provides added comfort, flexibility and shape retention

**Dropped Back with Hem Side Slits**  
Adds fashion detail, comfort, and ease of movement

**Fabric Technology**



**Fabrication** 50% Recycled Polyester/50% Polyester, 4.72 oz/yd<sup>2</sup> (USA) / 160gsm (CDN)

**Men's Sizes** S-5XL

**Women's Sizes** XS-3XL

**Decoration Options**



**PRICE**

**\$55.00** CAD MSRP | **£32.00** GBP RRP | **€35.00** EURO RRP



M's & W's: Charcoal Mix



M's & W's: Grey Mix

## **CAMINO PERFORMANCE S/S POLO**

TFX-1 | TFX-1W

The Camino Performance Polo is built with ultra-soft touch single jersey fabric made with environmentally sustainable 87% Recycled Polyester. Articulated action shoulders allow you to move freely without binding at the shoulder.

H2X-DRY® moisture management technology draws moisture away from the skin, helping you to maintain optimal body comfort.



## **TREELINE PERFORMANCE S/S POLO**

PTS-1 | PTS-1W

The Treeline Performance Polo is built from hardwearing and environmentally sustainable 100% Recycled Polyester double pique fabric with moisture-wicking H2X-DRY® technology designed to transport moisture away from the skin, keeping you dry and regulating your core temperature. Snag-resistant fabric improves durability and leaves the garment looking new wear after wear.

## CAMINO PERFORMANCE S/S POLO

TFX-1 | TFX-1W

### Additional Features

- Snag Resistant Fabric
- 3-Button Placket (M's)
- Open-V 2-Button Placket (W's)
- Partial Collar Stand (W's)
- Contoured Seaming (W's)
- Hem Side Slits
- Self-Fabric Collar
- Mechanical Stretch

### Fabrication

87% Recycled Polyester/13% Spandex Single Jersey, 5.43 oz/yd<sup>2</sup> (USA) / 184gsm (CDN)

### Men's Sizes

S-5XL

### Women's Sizes

XS-3XL

### Decoration Options



### Fabric Technology



### PRICE

**\$40.00** CAD MSRP | **£33.00** GBP RRP | **€30.00** EURO RRP



M's & W's: Black

**Pure Earth by STORMTECH™**  
Made from Recycled Polyester for a reduced environmental footprint  
**87% RECYCLED POLYESTER**

**STORMTECH H2X-DRY® Moisture Management**  
Draws moisture away from the skin, helping to maintain optimal body comfort

**Collar Stand (M's)**  
Maintains collar shape and structure, even after washing



W's: Graphite  
(Available in M's)

M's: Navy  
(Available in W's)

**UPF Rating 50+**  
Technology that protects the skin from the sun's rays

## TREELINE PERFORMANCE S/S POLO

PTS-1 | PTS-1W

### Additional Features

- Snag Resistant Fabric
- 3-Button Placket (M's)
- Open-V 3-Button Placket (W's)
- Partial Collar Stand (W's)
- Hem Side Slits
- Mechanical Stretch

### Fabrication

100% Recycled Polyester Double Pique, 4.28 oz/yd<sup>2</sup> (USA) / 145gsm (CDN)

### Men's Sizes

S-5XL (Back, Navy S-6XL)

### Women's Sizes

XS-3XL

### Decoration Options



### Fabric Technology



### PRICE

**\$35.00** CAD MSRP | **£27.00** GBP RRP | **€27.00** EURO RRP



M's & W's: Black

**Pure Earth by STORMTECH™**  
Made from Recycled Polyester for a reduced environmental footprint  
**100% RECYCLED POLYESTER**

**STORMTECH H2X-DRY® Moisture Management**  
Draws moisture away from the skin, helping to maintain optimal body comfort

**Anti-Curl Collar with Collar Stand (M's)**  
Maintains collar shape and structure, even after washing



W's: Navy  
(Available in M's)

M's: Graphite  
(Available in W's)

**UPF Rating 50+**  
Technology that protects the skin from the sun's rays





## **SIROCCO SPORTS POLO**

PRX-1 | PRX-1W

The Sirocco Sports Polo is built from hardwearing 100% Polyester pique fabric in a rib knit collar and cuff construction to provide enhanced durability and comfort. H2X-DRY® moisture management technology draws moisture away from the skin, helping you to maintain optimal body comfort.

# SIROCCO SPORTS POLO

PRX-1 | PRX-1W

**STORMTECH H2X-DRY® Moisture Management**  
Draws moisture away from the skin, helping to maintain optimal body comfort

**1x1 Rib Neck Collar**  
Rib knit construction provides enhanced durability and comfort

**3-Button Placket**  
Classic polo styling which can be fully buttoned up or down

**UPF Rating 40+**  
Technology that protects the skin from the sun's rays

**Mechanical Stretch**  
Provides added comfort, flexibility and shape retention

**Snag Resistant Fabric**  
Improves the snag resistance of the fabric, and leaves the garment looking new wear after wear

**Hem Side Slits**  
Add fashion detail, comfort and ease of movement



**Fabrication** 100% Polyester Pique,  
4.13 oz/yd<sup>2</sup> (USA) / 140gsm (CDN)

**Men's Sizes** S-5XL (Back, Navy S-6XL)

**Women's Sizes** XS-3XL

**Decoration Options**



**PRICE**  
\$32.00 CAD MSRP | £20.00 GBP RRP | €22.00 EURO RRP

**Fabric Technology**



M's & W's: Black

M's & W's: Dolphin

M's & W's: Navy

M's & W's: Azure Blue



## **FERRERA S/S POLO**

PSX-2M | PSX-2W

The Ferrera Polo is made from 94% sustainably sourced BCI Cotton pique for superior softness and comfort with 6% spandex to provide stretch and shape retention. UPF 50+ rated. Snag-resistant fabric improves durability and leaves the garment looking new wear after wear.



# FERRERA S/S POLO

PSX-2M | PSX-2W



**Pure Earth by STORMTECH™**  
Made from BCI Sourced Cotton for a reduced environmental footprint  
**94% BCI COTTON**

**Classic 3-Button Placket (M's)**  
For classic polo styling

**STORMTECH H2X-DRY® Moisture Management**  
Draws moisture away from the skin, helping to maintain optimal body comfort

**UPF Rating 50+**  
Protects the skin from the sun's rays

**Hem Side Slits**  
Adds styling detail, comfort and ease of movement at hem

**Structured Anti-Curl Collar**  
Non-roll construction prevents collar points from turning up or rolling

**Taped Neck Seam**  
For long-lasting shape retention

**Classic 4-Button Placket (W's)**  
For classic polo styling

**Rib Knit Collar and Sleeve Cuff**  
Engineered rib knit construction provides enhanced durability and comfort

**Snag Resistant Fabric**  
Improves the snag resistance of the fabric, and leaves the garment looking new wear after wear

**4-Way Stretch HD Fabric**  
Provides extreme durability with snag and pill resistance

**Fabric Technology**



**Fabrication**

94% BCI Cotton/6% Spandex Pique, 6.78 oz./yd<sup>2</sup> (USA) / 230gsm (CDN)

**Men's Sizes**

S-3XL (Black, Dolphin S-5XL)

**Women's Sizes**

XS-2XL (Black, Dolphin XS-3XL)

**Decoration Options**



**PRICE**

**\$58.00** CAD MSRP | **£40.00** GBP RRP | **€45.00** EURO RRP



M's & W's: Black



M's & W's: Dolphin



M's & W's: Navy



M's & W's: White

# OASIS S/S POLO

PSX-3M | PSX-3W



The Oasis H2X-DRY® Moisture Management polo combines maximum performance with high-style design. Artfully crafted features with articulated action shoulders, a self-fabric collar and a classic button down placket take looking great to new heights. Made from sustainably sourced BCI Cotton for superior softness with durable Recycled Polyester to help maintain shape and transport moisture away from the skin. UPF rating of 50+ protects the skin from the sun's rays.

### Pure Earth by STORMTECH™

Made from BCI Sourced Cotton for a reduced environmental footprint  
**55% BCI COTTON/  
 40% RECYCLED POLYESTER**

### Classic 3-Button Placket (M's)

For classic polo styling

### STORMTECH H2X-DRY® Moisture Management

Draws moisture away from the skin, helping to maintain optimal body comfort

### Polygiene® Freshness Technology

Prevents the growth of odor causing bacteria. Wear more, wash less.

### UPF Rating 50+

Protects the skin from the sun's rays

### Anti-Curl Collar with Collar Stays (M's)

Helps maintain collar shape and structure, even after washing

### Anti-Curl Combination Collar with Collar Stays (W's)

Contoured collar helps maintain shape and structure, even after washing

### Open-V 2-Button Placket (W's)

For classic yet casual polo styling

### Snag Resistant Fabric

Improves the snag resistance of the fabric, and leaves the garment looking new wear after wear

### Contoured Seaming (W's)

Provides a closer to body fit and sleek silhouette

### Mechanical Stretch

Provides added comfort, flexibility and shape retention

### Hem Side Slits

Adds styling detail, comfort and ease of movement at hem

### Additional Features

- Articulated Action Shoulders

### Fabric Technology



### Fabrication

55% BCI Cotton/40% Recycled Polyester/  
 5% Spandex Single Jersey,  
 4.72 oz/yd<sup>2</sup> (USA) / 160 gsm (CDN)

### Men's Sizes

S-3XL (Black, Dolphin, Ice Blue S-5XL)

### Women's Sizes

XS-2XL (Black, Dolphin, Ice Blue XS-3XL)

### Decoration Options



### PRICE

**\$48.00** CAD MSRP | **£36.00** GBP RRP | **€40.00** EURO RRP



M's & W's: Black

M's & W's: Dolphin

M's & W's: Navy

M's & W's: White

M's & W's: Sage Green

M's & W's: Rust

M's & W's: Ice Blue

# SETTEBELLO S/S POLO

PSX-4M | PSX-4W



The Settebello H2X-DRY® Moisture Management polo combines high-performance features with a high style design. Artfully crafted features include set-in sleeves, a self-fabric collar and a classic button placket take looking great to new heights. Made from sustainably sourced BCI Cotton for superior softness with durable Recycled Polyester to help maintain shape and transport moisture away from the skin. UPF rating of 30+ protects the skin from the sun's rays.

**Pure Earth by STORMTECH™**  
Made from BCI Sourced Cotton for a reduced environmental footprint  
**60% BCI COTTON/  
40% RECYCLED POLYESTER**

**Classic 3-Button Placket (M's)**  
For classic polo styling

**UPF Rating 30+**  
Protects the skin from the sun's rays

**STORMTECH H2X-DRY® Moisture Management**  
Draws moisture away from the skin, helping to maintain optimal body comfort

**Snag Resistant Fabric**  
Improves the snag resistance of the fabric, and leaves the garment looking new wear after wear

**Anti-Curl Collar with Collar Stays (M's)**  
Helps maintain collar shape and structure, even after washing

**Anti-Curl Combination Collar with Collar Stays (W's)**  
Contoured collar helps maintain shape and structure, even after washing

**Classic 5-Button Placket (W's)**  
For classic yet casual polo styling

**Contoured Seaming (W's)**  
Provides a closer to body fit and sleek silhouette

**Mechanical Stretch**  
Provides added comfort, flexibility and shape retention

**Hem Side Slits**  
Adds styling detail, comfort and ease of movement at hem

**Fabrication** 60% BCI Cotton/40% Recycled Polyester Single Jersey, 4.57 oz/yd<sup>2</sup> (USA) / 155gsm (CDN)

**Men's Sizes** S-3XL (Black, Dolphin, Ice Blue S-5XL)

**Women's Sizes** XS-2XL (Black, Dolphin, Ice Blue XS-3XL)

**Fabric Technology**



**Decoration Options**



**PRICE**

**\$30.00** CAD MSRP | **£24.00** GBP RRP | **€25.00** EURO RRP



M's & W's: Black

M's & W's: Dolphin

M's & W's: Classic Blue

M's & W's: White

M's & W's: Sage Green

M's & W's: Rust

M's & W's: Ice Blue



## **MISTRAL HEATHERED POLO**

SPL-1 | SPL-1W

Ultra-soft double pique with a heathered finish, the Mistral Heathered Polo is hard-wearing, yet stylish and lightweight. The color-blocked H2X-DRY® performance polo features a 3-button placket, durable rib knit tailored collar and combination shoulder that allows unrestricted motion.



## **NANTUCKET STRETCH PIQUE POLO**

CTP-2 | CTP-2W

Hardwearing stretch pique construction 95% Cotton/5% Spandex, button placket polo. Side slits at the hem provide a regular fit, while the pill resistant fabric leaves the garment looking newer for longer.

## MISTRAL HEATHERED POLO

SPL-1 | SPL-1W

### Additional Features

- Snag Resistant Fabric
- UPF Rating 50+
- Combination Shoulder
- Collar Stand
- Front Back Princess Style Seams (W's)

### Fabrication

100% Polyester Double Pique, 5.13oz/yd<sup>2</sup> (USA)/174gsm (CDN)

### Men's Sizes

S-3XL (Charcoal Heather, Dolphin S-5XL)

### Women's Sizes

XS-2XL

### Decoration Options



### Fabric Technology



**Classic 3-Button Placket (M's)**  
For classic polo styling

**Open-V Buttonless Placket (W's)**  
Provides modern, premium styling, flexibility, and comfort

**STORMTECH H2X-DRY® Moisture Management**  
Draws moisture away from the skin, helping to maintain optimal body comfort



W's: Violet

Ms: Titanium  
(Available in W's)

### PRICE

\$50.00 CAD MSRP | £28.00 GBP RRP | €30.00 EURO RRP



M's & W's: Charcoal Heather

M's & W's: Dolphin

M's & W's: Ocean

## NANTUCKET STRETCH PIQUE POLO

CTP-2 | CTP-2W

### Additional Features

- Pique Fabrication
- Classic 5-Button Placket (W's)
- Hem Side Slits

### Fabrication

(Solid) 95% Cotton/ 5% Spandex, 6.19oz/yd<sup>2</sup> (USA)/ 210gsm (CDN) (Charcoal Heather)  
57% Cotton/ 38% Polyester/ 5% Spandex, 6.19oz/yd<sup>2</sup> (USA)/ 210gsm (CDN)

### Men's Sizes

S-3XL (Black S-5XL)

### Women's Sizes

XS-2XL (Black XS-3XL)

### Decoration Options



### PRICE

\$40.00 CAD MSRP | £25.00 GBP RRP | €27.00 EURO RRP

**3-Button Placket (M's)**  
For classic polo styling

**Rib Knit Collar and Cuff Hem**  
Rib knit construction provides enhanced durability and comfort



W's: Indigo  
(Available in M's)

Ms: Charcoal Heather  
(Available in W's)



M's & W's: Black

M's & W's: White



## **ECLIPSE H2X-DRY® PIQUE POLO**

PG-1 | PG-1W

Hard-wearing, snag-resistant micro-pique fabric combined with H2X-DRY® moisture-wicking technology to keep you cool and dry in any environment. The Eclipse Pique Polo features a 3-button placket, durable rib-knit tailored collar and side hem slits for maneuverability at work or play.

# ECLIPSE H2X-DRY® PIQUE POLO

PG-1 | PG-1W



**3-Button Placket (M's)**  
For classic polo styling

**Open-V 3-Button Placket (W's)**  
For classic polo styling

**STORMTECH H2X-DRY® Moisture Management**  
Draws moisture away from the skin, helping to maintain optimal body comfort

**Snag Resistant Fabric**  
Improves the snag resistance of the fabric, and leaves the garment looking new wear after wear

**UPF Rating 40+**  
Technology that protects the skin from the sun's rays

**Additional Features**

- 1x1 Rib Knit Collar
- Mechanical Stretch

**Fabrication** 100% Polyester Pique, 4.13 oz/yd<sup>2</sup> (USA) / 140gsm (CDN)

**Men's Sizes** S-3XL (Black, Navy, Carbon S-6XL)  
(Azure Blue, Cool Silver, Ice Blue S-5XL)

**Women's Sizes** XS-2XL (Black, Navy, Carbon, Cool Silver, Ice Blue XS-3XL)

**Fabric Technology**



**Decoration Options**



**PRICE**  
\$27.00 CAD MSRP | £20.00 GBP RRP | €20.00 EURO RRP



M's & W's: Black

M's & W's: Carbon

M's & W's: Navy

M's & W's: Azure Blue

M's & W's: Kiwi

M's & W's: Bright Red

M's & W's: Cool Silver

M's & W's: White

M's & W's: Ice Blue  
**NEW**



M'S ASHBURN CREW NECK WK-1

# STORMTECH Premium Tees

Tees that work as hard as you do. As one of the most in-demand and versatile wardrobe items, they are that essential addition you just can't live without. Whether you require high-tech performance with moisture management technology, industrial strength fabrics, or casual day-to-day attire, our on-trend range of Tees exudes quality, style and a keen eye for fashion.



W'S VOLANTE H2X-DRY® L/S TEE TLX-2W



M'S MONTEBELLO PERFORMANCE S/S TEE CPF-1





# Anything But Conventional

**H2X DRY**  
MOISTURE MANAGEMENT



**POLYGIENE**  
FRESHNESS

**UVX**  
SUN PROTECTION



Recycled Polyester



Sustainably Sourced

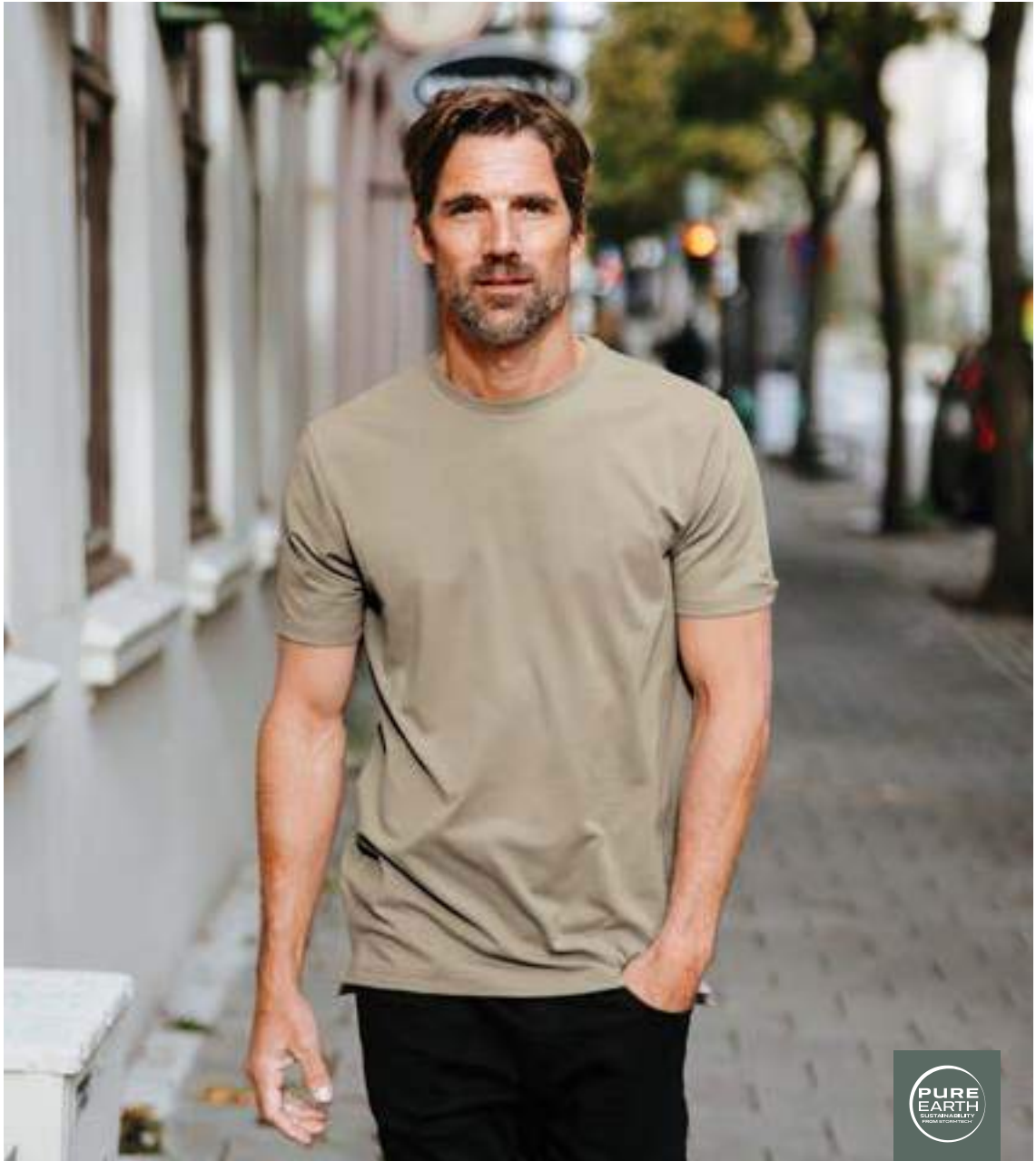


4-way stretch



anti-snap  
CONSTRUCTION





## **MONTEBELLO PERFORMANCE S/S TEE**

CPF-1 | CPF-1W

The Montebello Performance Short Sleeve Tee combines sustainably sourced BCI Cotton for superior softness with durable Recycled Polyester to help maintain shape and transport moisture away from the skin. UPF Rating 50+ protects the skin from the sun's rays.

## MONTEBELLO PERFORMANCE S/S TEE

CPF-1 | CPF-1W

### Additional Features

- 1x1 Rib Knit Crew Neck (M's)
- 1x1 Rib Knit Scoop Neck (W's)
- Hem Side Slits

### Fabrication

58% BCI Cotton/38% Recycled Polyester/  
4% Spandex Single Jersey,  
6.19 oz/yd2 (USA) / 210gsm (CDN)

### Men's Sizes

2XS-3XL (Black & Charcoal Heather 2XS-5XL)

### Women's Sizes

XS-2XL (Black & Charcoal Heather XS-3XL)

### Decoration Options



### Fabric Technology



### PRICE

**\$45.00** CAD MSRP | **£32.00** GBP RRP | **€33.00** EURO RRP

#### Pure Earth by STORMTECH™

Made from Recycled Polyester and BCI Sourced Cotton for a reduced environmental footprint

**58% BCI COTTON/ 38% RECYCLED POLYESTER**



M's & W's: Black

M's & W's: Charcoal Heather

M's & W's: Indigo

M's & W's: White

### STORMTECH H2X-DRY® Moisture Management

Draws moisture away from the skin, helping to maintain optimal body comfort

**Taped Neck Seam**  
For long-lasting shape retention



W's: Taupe  
(Available in M's)

M's: Ash Heather  
(Available in W's)

**UPF Rating 50+**  
Technology that protects the skin from the sun's rays

## MONTEBELLO PERFORMANCE L/S TEE

CPF-2 | CPF-2W

### Additional Features

- UPF Rating 50+
- 1x1 Rib Knit Crew Neck (M's)
- 1x1 Rib Knit Scoop Neck (W's)
- Hem Side Slits

### Fabrication

58% BCI Cotton/38% Recycled Polyester/  
4% Spandex Single Jersey,  
6.19 oz/yd2 (USA) / 210gsm (CDN)

### Men's Sizes

2XS-3XL (Black, Charcoal Heather 2XS-5XL)

### Women's Sizes

XS-2XL (Black, Charcoal Heather XS-3XL)

### Decoration Options



### Fabric Technology



### PRICE

**\$55.00** CAD MSRP | **£36.00** GBP RRP | **€37.00** EURO RRP

#### STORMTECH H2X-DRY® Moisture Management

Draws moisture away from the skin, helping to maintain optimal body comfort

**Taped Neck Seam**  
For long-lasting shape retention

### Pure Earth by STORMTECH™

Made from Recycled Polyester and BCI Sourced Cotton for a reduced environmental footprint

**58% BCI COTTON/ 38% RECYCLED POLYESTER**



M's & W's: Black

M's & W's: White



W's: Indigo  
(Available in M's)

M's: Charcoal Heather  
(Available in W's)

## EQUINOX S/S TEE

CPM-1 | CPM-1W

The sustainably sourced Equinox S/S Tee is constructed with BCI Cotton blended with polyester single jersey fabric to create an ultra-soft tee that keeps its shape - no matter what. H2X-DRY® moisture management technology draws moisture away from the skin, helping you to maintain optimal body comfort. UPF Rating 30+ protects the skin from the sun's rays.



## EQUINOX L/S TEE

CPM-2 | CPM-2W

The Sustainably sourced Equinox Long Sleeve Tee is constructed with BCI Cotton blended with Polyester single jersey fabric to create an ultra-soft tee that keeps its shape - no matter what. H2X-DRY® moisture management technology draws moisture away from the skin, helping you to maintain optimal body comfort. UPF Rating 30+ protects the skin from the sun's rays.



## EQUINOX S/S TEE

CPM-1 | CPM-1W

### Additional Features

- UPF Rating 30+
- 1x1 Rib Knit Crew Neck (M's)
- 1x1 Rib Knit Scoop Neck (W's)
- Hem Side Slits
- Taped Neck Seam

### Fabrication

60% BCI Cotton/40% Polyester Single Jersey, 5.46 oz/yd<sup>2</sup> (USA) / 185gsm (CDN)

### Men's Sizes

2XS-3XL (Black, Dolphin 2XS-5XL)

### Women's Sizes

XS-2XL (Black, Dolphin XS-3XL)

### Decoration Options



### Fabric Technology



Sustainably Sourced



### PRICE

\$32.00 CAD MSRP | £22.00 GBP RRP | €22.00 EURO RRP



M's & W's: Black

M's & W's: Dolphin

M's & W's: Mineral

M's & W's: Steel Blue

M's & W's: Rust Heather

M's & W's: Blue Heather

NEW

NEW

### STORMTECH H2X-DRY® Moisture Management

Draws moisture away from the skin, helping to maintain optimal body comfort

Pure Earth by STORMTECH™  
Made from BCI Sourced Cotton for a reduced environmental footprint

60% BCI COTTON



W's: White  
(Available in M's)

M's: Sage Green Heather  
(Available in W's)

NEW

## EQUINOX L/S TEE

CPM-2 | CPM-2W

### Additional Features

- UPF Rating 30+
- 1x1 Rib Knit Crew Neck (M's)
- 1x1 Rib Knit Scoop Neck (W's)
- Hem Side Slits

### Fabrication

60% BCI Cotton/40% Polyester Single Jersey, 5.46 oz/yd<sup>2</sup> (USA) / 185gsm (CDN)

### Men's Sizes

2XS-3XL (Black, Dolphin 2XS-5XL)

### Women's Sizes

XS-2XL (Black, Dolphin XS-3XL)

### Decoration Options



### Fabric Technology



Sustainably Sourced



### PRICE

\$40.00 CAD MSRP | £28.00 GBP RRP | €29.00 EURO RRP



M's & W's: Black

M's & W's: White

### STORMTECH H2X-DRY® Moisture Management

Draws moisture away from the skin, helping to maintain optimal body comfort

Pure Earth by STORMTECH™  
Made from BCI Sourced Cotton for a reduced environmental footprint

60% BCI COTTON

### Taped Neck Seam

For long-lasting shape retention



W's: Steel Blue  
(Available in M's)

M's: Dolphin  
(Available in W's)



## **VOLANTE H2X-DRY® S/S TEE**

TSX-5M | TSX-5W

The Volante Short Sleeve Tee features an ultra-soft touch 5-ounce single jersey fabric made with equal blend of environmentally sustainable Recycled and virgin Polyester. Articulated action shoulders allow you to move freely without binding at the shoulder.

H2X-DRY® moisture management technology draws moisture away from the skin, helping you to maintain optimal body comfort. Self-fabric collar for maximum comfort. UPF Rating of 30+ protects the skin from the sun's rays.



## **VOLANTE H2X-DRY® L/S TEE**

TLX-2M | TLX-2W

The Volante Long Sleeve Tee features an ultra-soft touch 5-ounce single jersey fabric made with equal blend of environmentally sustainable Recycled and virgin Polyester. Articulated action shoulders allow you to move freely without binding at the shoulder.

H2X-DRY® moisture management technology draws moisture away from the skin, helping you to maintain optimal body comfort. Self-fabric collar for maximum comfort. UPF Rating 30+ protects the skin from the sun's rays.

## VOLANTE H2X-DRY® S/S TEE

TSX-5M | TSX-5W

### Additional Features

- Polygiene® Freshness Technology
- UPF Rating 30+
- Snag Resistant Fabric
- Self-Fabric Crew Neck Collar
- Articulated Action Shoulders
- Contoured Side Panels
- 4-Way Stretch Fabric
- Flatlock Seams

### Fabrication

47% Recycled Polyester/47% Polyester/  
6% Spandex Single Jersey,  
5.01 oz/yd<sup>2</sup> (USA) / 170gsm (CDN)

### Men's Sizes

S-3XL (Charcoal Heather S-5XL)

### Women's Sizes

XS-2XL (Charcoal Heather XS-3XL)

### Decoration Options



### Fabric Technology



### PRICE

**\$38.00** CAD MSRP | **£25.00** GBP RRP | **€28.00** EURO RRP



M's & W's: Granite Heather

M's & W's: Ash Heather

M's: Rust Heather

W's: Ice Blue Heather

### STORMTECH H2X-DRY® Moisture Management

Draws moisture away from the skin, helping to maintain optimal body comfort

Pure Earth by STORMTECH™  
Made from Recycled Polyester for a reduced environmental footprint  
**47% RECYCLED POLYESTER**



W's: Sage  
(Available in M's)

M's: Charcoal Heather  
(Available in W's)



## VOLANTE H2X-DRY® L/S TEE

TLX-2M | TLX-2W

### Additional Features

- Polygiene® Freshness Technology
- UPF Rating 30+
- Snag Resistant Fabric
- Self-Fabric Crew Neck Collar
- Articulated Action Shoulders
- Contoured Side Panels
- 4-Way Stretch Fabric
- Flatlock Seams

### Fabrication

47% Recycled Polyester/47% Polyester/  
6% Spandex Single Jersey,  
5.01 oz/yd<sup>2</sup> (USA) / 170gsm (CDN)

### Men's Sizes

S-3XL (Charcoal Heather S-5XL)

### Women's Sizes

XS-2XL (Charcoal Heather XS-3XL)

### Decoration Options



### Fabric Technology



### PRICE

**\$45.00** CAD MSRP | **£30.00** GBP RRP | **€32.00** EURO RRP



M's & W's: Ash Heather

### STORMTECH H2X-DRY® Moisture Management

Draws moisture away from the skin, helping to maintain optimal body comfort

Pure Earth by STORMTECH™  
Made from Recycled Polyester for a reduced environmental footprint  
**47% RECYCLED POLYESTER**



W's: Charcoal Heather  
(Available in M's)

M's: Granite Heather  
(Available in W's)



## ASHBURN CREW NECK

WK-1 | WK-1W

The Ashburn Crew Neck Tee combines sustainably sourced BCI Cotton for superior softness with durable Recycled Polyester to help maintain shape and transport moisture away from the skin. The taped neck seam provides extra comfort and durability while UPF Rating 50+ protects the skin from the sun's rays.



## ASHBURN HENLEY

WK-2 | WK-2W

The Ashburn Henley combines sustainably sourced BCI Cotton for superior softness with durable Recycled Polyester to help maintain shape and transport moisture away from the skin. The taped neck seam provides extra comfort and durability while UPF Rating 50+ protects the skin from the sun's rays.

## ASHBURN CREW NECK

WK-1 | WK-1W

### Additional Features

- UPF Rating 50+
- 1x1 Rib Knit Collar and Cuffs
- Anti-Pill Waffle Fabric

### Fabrication

58% BCI Cotton/42% Recycled Polyester Waffle, 5.54 oz/yd<sup>2</sup> (USA) / 188gsm (CDN)

### Men's Sizes

S-5XL

### Women's Sizes

XS-2XL

### Decoration Options



### Fabric Technology



### PRICE

\$55.00 CAD MSRP | £35.00 GBP RRP | €36.00 EURO RRP

Pure Earth by STORMTECH™  
Made from Recycled Polyester and BCI Sourced Cotton for a reduced environmental footprint  
**58% BCI COTTON/  
42% RECYCLED POLYESTER**

**STORMTECH H2X-DRY® Moisture Management**  
Draws moisture away from the skin, helping to maintain optimal body comfort



W's: Black  
(Available in M's)

M's: Graphite  
(Available in W's)

## ASHBURN HENLEY

WK-2 | WK-2W

### Additional Features

- UPF Rating 50+
- 1x1 Rib Knit Collar and Cuffs
- 3-Button Henley Placket (M's)
- 5-Button Henley Placket (W's)
- Anti-Pill Waffle Fabric

### Fabrication

58% BCI Cotton/42% Recycled Polyester Waffle, 5.54 oz/yd<sup>2</sup> (USA) / 188gsm (CDN)

### Men's Sizes

S-5XL

### Women's Sizes

XS-2XL

### Decoration Options



### Fabric Technology



### PRICE

\$55.00 CAD MSRP | £36.00 GBP RRP | €37.00 EURO RRP

Pure Earth by STORMTECH™  
Made from Recycled Polyester and BCI Sourced Cotton for a reduced environmental footprint  
**58% BCI COTTON/  
42% RECYCLED POLYESTER**

**STORMTECH H2X-DRY® Moisture Management**  
Draws moisture away from the skin, helping to maintain optimal body comfort



W's: Graphite  
(Available in M's)

M's: Black  
(Available in W's)



## **OASIS S/S TEE**

TSX-3M | TSX-3W

The Oasis Performance Tee features an ultra-soft touch single jersey fabric made with environmentally sustainable 55% BCI Cotton and 40% Recycled Polyester with 5% Spandex. Set in sleeves allow you to move freely without binding at the shoulder. H2X-DRY® moisture management technology draws moisture away from the skin, helping you to maintain optimal body comfort. Rib knit collar for maximum comfort. UPF Rating 50+ protects the skin from the sun's rays.



# OASIS S/S TEE

TSX-3M | TSX-3W



## Pure Earth by STORMTECH™

Made from Recycled Polyester and BCI Sourced Cotton for a reduced environmental footprint

**55% BCI COTTON/  
40% RECYCLED  
POLYESTER**

## STORMTECH

### H2X-DRY®

**Moisture Management**  
Draws moisture away from the skin, helping to maintain optimal body comfort

## Polygiene® Freshness

**Technology**  
Prevents the growth of odor causing bacteria. Wear more, wash less.

## Snag Resistant Fabric

Improves the snag resistance of the fabric, and leaves the garment looking new wear after wear



## 1x1 Rib Knit Crew Neck

Provides enhanced durability and comfort at the neck opening

## UPF Rating 50+

Technology that protects the skin from the sun's rays

## Mechanical Stretch

Provides added comfort, flexibility and shape retention

## Hem Side Slits (W's)

Adds styling detail, comfort and ease of movement at hem

## Fabrication

55% BCI Cotton/40% Recycled Polyester/  
5% Spandex Single Jersey,  
4.72 oz/yd<sup>2</sup> (USA) / 160 gsm (CDN)

## Men's Sizes

S-3XL (Black, Dolphin, Ice Blue S-5XL)

## Women's Sizes

XS-2XL (Black, Dolphin, Ice Blue XS-3XL)

## Decoration Options



## Fabric Technology



## PRICE

**\$38.00** CAD MSRP | **£28.00** GBP RRP | **€30.00** EURO RRP



M's & W's: Black

M's & W's: Dolphin

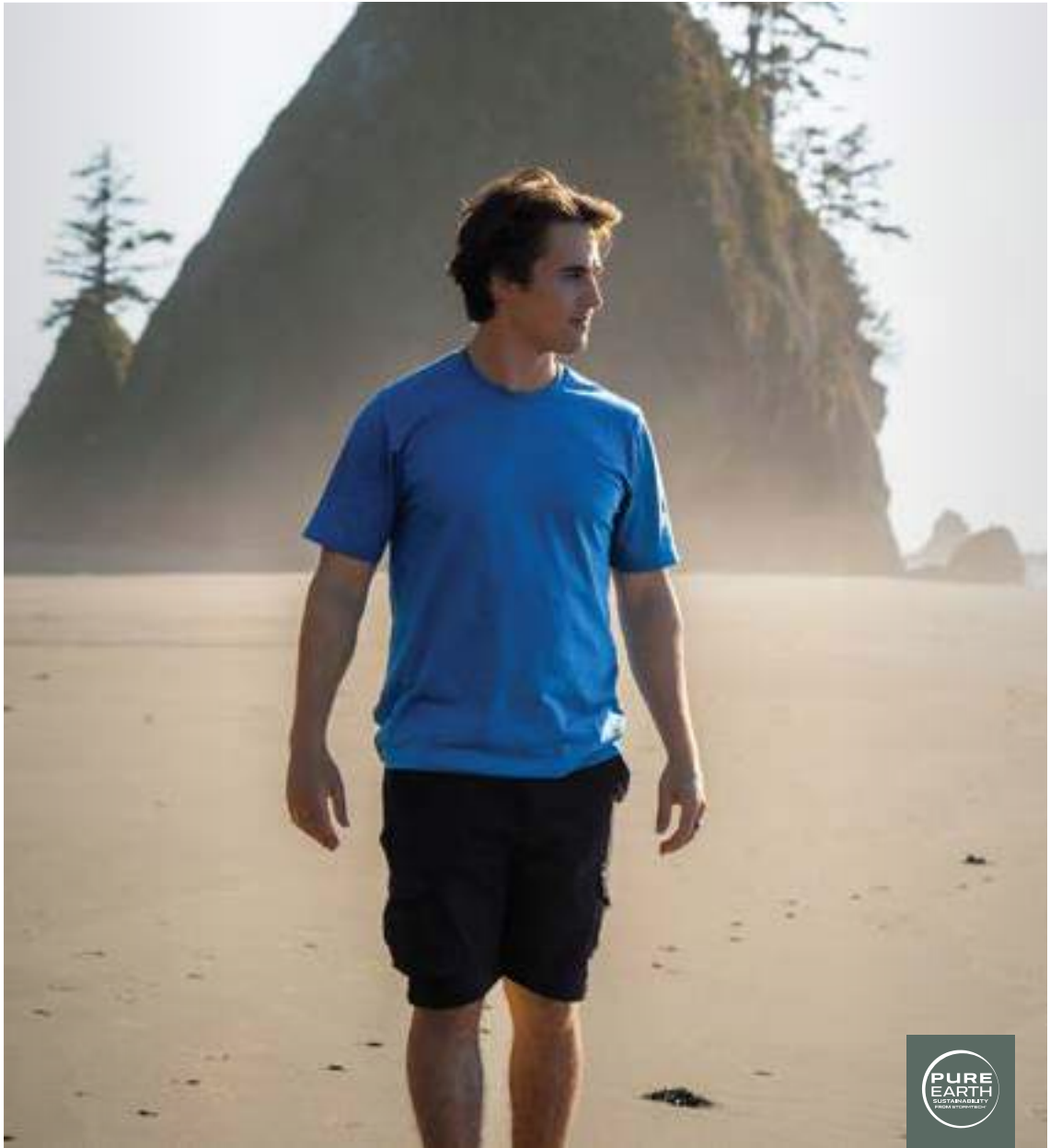
M's & W's: Navy

M's & W's: White

M's & W's: Sage Green

M's & W's: Rust

M's & W's: Ice Blue



## **SETTEBELLO S/S TEE**

TSX-4M | TSX-4W

The Settebello Tee combines sustainably sourced 60% BCI Cotton for superior softness with durable Recycled Polyester to help maintain shape and transport moisture away from the skin. The taped neck seam provides extra comfort and durability. Mechanical stretch fabric provides an optional range of movement. UPF Rating 30+ protects the skin from the sun's rays.

# SETTEBELLO S/S TEE

TSX-4M | TSX-4W



**Pure Earth by STORMTECH™**  
 Made from Recycled Polyester and BCI Sourced Cotton for a reduced environmental footprint  
**60% BCI COTTON/  
 40% RECYCLED POLYESTER**



**1x1 Rib Knit Crew Neck**  
 Provides enhanced durability and comfort at the neck opening

**UPF Rating 30+**  
 Technology that protects the skin from the sun's rays



**STORMTECH H2X-DRY® Moisture Management**  
 Draws moisture away from the skin, helping to maintain optimal body comfort

**Snag Resistant Fabric**  
 Improves the snag resistance of the fabric, and leaves the garment looking new wear after wear

**Mechanical Stretch**  
 Provides added comfort, flexibility and shape retention

**Hem Side Slits (W's)**  
 Adds styling detail, comfort and ease of movement at hem

**Fabrication** 60% BCI Cotton/40% Recycled Polyester  
 Single Jersey, 4.57 oz/yd<sup>2</sup> (USA) / 155gsm (CDN)

**Men's Sizes** S-3XL (Black, Dolphin, Ice Blue S-5XL)

**Women's Sizes** XS-2XL (Black, Dolphin, Ice Blue XS-3XL)

**Decoration Options**



**Fabric Technology**



**PRICE**

**\$28.00** CAD MSRP | **£18.00** GBP RRP | **€20.00** EURO RRP



M's & W's: Black

M's & W's: Dolphin

M's & W's: Classic Blue

M's & W's: White

M's & W's: Sage Green

M's & W's: Rust

M's & W's: Ice Blue

## TUNDRA PERFORMANCE S/S TEE

TFX-2 | TFX-2W

The Tundra Performance Tee features an ultra-soft touch single jersey fabric made with environmentally sustainable 87% Recycled Polyester. Articulated action shoulders allow you to move freely without binding at the shoulder. H2X-DRY® moisture management technology draws moisture away from the skin, helping you to maintain optimal body comfort. Self-fabric collar for maximum comfort.



## DOCKYARD PERFORMANCE S/S TEE

VRX-1 | VRX-1W

The Dockyard Performance Tee is built with durable 100% polyester double pique fabric and treated with Polygiene® Freshness technology to control odor; wear more, wash less. STORMTECH H2X-DRY® Moisture Management draws moisture away from the skin, helping to maintain optimal body comfort. UPF Rating 50+ protects the skin from the sun's rays.

## TUNDRA PERFORMANCE S/S TEE

TFX-2 | TFX-2W

- Additional Features**
- UPF Rating 50+
  - Crew Neck Self-Fabric Collar (M's)
  - Self-Fabric Scoop Neck (W's)
  - Contoured Seaming

**Fabrication** 87% Recycled Polyester/13% Spandex Single Jersey, 5.43 oz/yd<sup>2</sup> (USA) / 184gsm (CDN)

**Men's Sizes** S-5XL

**Women's Sizes** XS-3XL

**Decoration Options** 

**Fabric Technology**   

**PRICE**  
**\$36.00** CAD MSRP | **£24.00** GBP RRP | **€24.00** EURO RRP



M's & W's: Black

**Pure Earth by STORMTECH™**  
 Made from Recycled Polyester for a reduced environmental footprint  
**87% RECYCLED POLYESTER**



W's: Navy  
(Available in M's)

M's: Graphite  
(Available in W's)

**STORMTECH H2X-DRY® Moisture Management**  
 Draws moisture away from the skin, helping to maintain optimal body comfort

## DOCKYARD PERFORMANCE S/S TEE

VRX-1 | VRX-1W

- Additional Features**
- UPF Rating 50+
  - Double Needle Topstitching
  - Self-Fabric Scoop Neck (W's)
  - Crew Neck Self-Fabric Collar (M's)
  - Single Chest Pocket (M's)
  - Contoured Seaming (W's)
  - Dropped Back with Hem Side Slits

**Fabrication** 100% Polyester Double Pique, 5.13 oz/yd<sup>2</sup> (USA) / 174gsm (CDN)

**Men's Sizes** S-5XL

**Women's Sizes** XS-3XL

**Decoration Options** 

**Fabric Technology**   

**PRICE**  
**\$35.00** CAD MSRP | **£22.00** GBP RRP | **€22.00** EURO RRP



M's & W's: Black

**STORMTECH H2X-DRY® Moisture Management**  
 Draws moisture away from the skin, helping to maintain optimal body comfort

**Polygiene® Freshness Technology**  
 Prevents the growth of odor causing bacteria. Wear more, wash less



W's: Navy Heather  
(Available in M's)

M's: Dolphin Heather  
(Available in W's)



## **TORCELLO CREW NECK TEE**

TG-1 | TG-1W

The Torcello Crew Neck Tee is constructed from 60% cotton and 40% polyester single jersey with a rib crew neck and taped neck seams for ultra-soft comfort. Ergonomic design gives range and tailored fit, while side slits bring comfort and ease of movement.



## **TORCELLO L/S TEE**

TGL-1 | TGL-1W

The Torcello L/S Tee is constructed from 60% cotton and 40% polyester single jersey with a rib crew neck and taped neck seams for ultra-soft comfort.

Ergonomic design gives range and tailored fit, while side slits bring comfort and ease of movement.

## TORCELLO CREW NECK TEE

TG-1 | TG-1W

### Additional Features

- 1x1 Rib Knit Scoop Neck (W's)
- Taped Neck and Shoulder Seams
- Hem Side Slits (M's)

### Fabrication

60% Cotton/40% Polyester Single Jersey,  
4.42 oz/yd<sup>2</sup> (USA) / 150gsm (CDN)

### Men's Sizes

S-3XL

### Women's Sizes

XS-2XL (White XS-3XL)

### Decoration Options



### Fabric Technology



### PRICE

**\$20.00** CAD MSRP | **£14.00** GBP RRP | **€15.00** EURO RRP



M's & W's: Black

W's: White

**Contour Shaped Hem with Side Slits (W's)**  
Ergonomic design gives range and tailored fit, while side slits bring comfort and ease of movement

**1x1 Rib Knit Crew Neck (M's)**  
Rib knit construction provides enhanced durability and comfort



W's: Denim Heather

M's: Graphite Heather  
(Available in W's)

**UPF Rating 50+**  
Technology that protects the skin from the sun's rays

## TORCELLO L/S TEE

TGL-1 | TGL-1W

### Additional Features

- 1x1 Rib Knit Crew Neck Collar and Cuff (M's)
- 1x1 Rib Knit Scoop Neck (W's)
- UPF Rating 40+
- Set-in Sleeves

### Fabrication

60% Cotton/40% Polyester Single Jersey,  
4.42 oz/yd<sup>2</sup> (USA) / 150gsm (CDN)

### Men's Sizes

S-3XL (Black S-5XL)

### Women's Sizes

XS-2XL (Black XS-3XL)

### Decoration Options



### Fabric Technology



### PRICE

**\$30.00** CAD MSRP | **£20.00** GBP RRP | **€20.00** EURO RRP



M's & W's: White

**Contour Shaped Hem with Side Slits (W's)**  
Ergonomic design gives range and tailored fit, while side slits bring comfort and ease of movement

**Taped Neck and Shoulder Seams**  
Self-fabric tape sewn to the inside seam adds shape and long-lasting form



W's: Graphite Heather  
(Available in M's)

M's: Black  
(Available in W's)

# Stormtech Performance Shirts



Our Urban Casual range makes looking good so natural, you're bound to have a few lingering stares. By combining the tranquility of the outdoors with just the right amount of city tempo, STORMTECH brings a style to the streets that is the perfect morphing of casual and edgy. Always at the forefront of fashion, our range of sweaters, knits, and jackets will take your style journey to the next level.

## AZORES QUICK DRY L/S SHIRT

QRT-2 | QRT-2W

Long sleeve shirt built for work or play with ultra-lightweight, quick-to-dry, stretch-woven dobby fabric. Featuring a tailored collar and contoured seaming for maximum comfort. The contoured hem allows you to wear this shirt un-tucked for casual applications or tucked in to wear under a jacket.

### Additional Features

- Button Down Collar (M's)
- Flapped Chest Pockets with Button Closure (M's)
- Coconut Button Closure
- Cuff Plackets with Button Closure
- Collar Stand
- Single Chest Pocket (W's)
- Flat Felled Side Seams
- Contoured Hem

### Fabrication

100% Polyester Stretch Woven Dobby, 2.86 oz/yd<sup>2</sup> (USA) / 97gsm (CDN)

### Men's Sizes

S-3XL (Black S-5XL)

### Women's Sizes

XS-2XL (Black XS-3XL)

### Decoration Options



### Technology



### PRICE

\$65.00 CAD MSRP | £45.00 GBP RRP | €50.00 EURO RRP



M's & W's: Dark Denim Heather

M's & W's: Retro Blue

M's & W's: Taupe

M's & W's: White

## AZORES QUICK DRY SHIRT

QRT-1 | QRT-1W

Short sleeve shirt built for work or play with ultra-lightweight, quick-to-dry, stretch-woven dobby fabric. Featuring a tailored collar and contoured seaming for maximum comfort.

### Additional Features

- Full Front Button Closure
- Single Chest Pocket (M's)
- Flat Felled Side Seams
- Contoured Hem

### Fabrication

100% Polyester Stretch Woven Dobby, 2.86 oz/yd<sup>2</sup> (USA) / 97gsm (CDN)

### Men's Sizes

S-5XL

### Women's Sizes

XS-2XL

### Decoration Options



### Technology



### PRICE

\$55.00 CAD MSRP | £33.00 GBP RRP | €35.00 EURO RRP

### STORMTECH H2X-DRY®

#### Moisture Management

Draws moisture away from the skin, helping to maintain optimal body comfort



W's: Heather Grey (Available in M's)

M's: Black (Available in W's)

### Contoured Seaming (W's)

Provides a closer to body fit and sleek silhouette

### STORMTECH H2X-DRY®

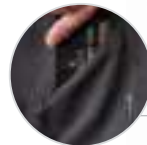
#### Moisture Management

Draws moisture away from the skin, helping to maintain optimal body comfort



W's: Heather Grey (Available in M's)

M's: Black (Available in W's)



**Side Pocket with Invisible Zipper (W's)**  
Provide secure storage for valuables

## MOLOKAI S/S SHIRT

SBR-1 | SBR-1W

Anything but conventional. The Molokai short sleeve shirt delivers a refreshing take on the traditional warm weather shirt with a clean finish that casually creates an eye-catching, cultured look.

Finished with a single chest pocket, button closures and a contoured hem to finish off this urban essential. Made from Recycled Polyester and BCI sourced Cotton for a reduced environmental footprint.



## SKEENA S/S SHIRT

SBR-2 | SBR-2W

A heathered slub fabric with a sleek design delivers a refreshing take on the traditional short sleeve shirt. This urban outdoor staple has a clean design that casually creates an eye-catching, cultured look with coconut button closures and a contoured hem to finish off this urban essential. The collar stand maintains collar shape and structure, wash after wash. Made from Recycled Polyester and BCI sourced Cotton for a reduced environmental footprint.



## MOLOKAI S/S SHIRT

SBR-1 | SBR-1W

- Additional Features**
- Collar Stand
  - Easy Care Finish
  - Contoured Hem

**Fabrication** 60% BCI Cotton/40% Recycled Polyester,  
4.13 oz/yd<sup>2</sup> (USA) / 140gsm (CDN)

**Men's Sizes** S-3XL (Carbon/Black S-5XL)

**Women's Sizes** XS-2XL

**Decoration Options**

**E** **HT** **LP**

**Technology**

**PURE EARTH** Sustainably Sourced

**Pure Earth by STORMTECH™**  
Made from Recycled Polyester and BCI Sourced Cotton for a reduced environmental footprint  
**60% BCI COTTON/  
40% RECYCLED  
POLYESTER**

**Full Front Button Closure**  
Easy to wear casually or to work

**Single Chest Pocket**  
Conveniently stow and access personal items

**Flat Felled Side Seams**  
Side seam construction designed to lay comfortably flat and reduce chafing

**PRICE**  
**\$60.00** CAD MSRP | **£45.00** GBP RRP | **€48.00** EURO RRP



M's & W's: Carbon/Black



M's: Navy/Classic Blue  
(Available in W's)

W's: Mineral/Black  
(Available in M's)

## SKEENA S/S SHIRT

SBR-2 | SBR-2W

- Additional Features**
- Coconut Button Closure
  - Contoured Seaming (W's)
  - Easy Care Finish
  - Contoured Hem

**Fabrication** 60% BCI Cotton/40% Recycled Polyester,  
4.13 oz/yd<sup>2</sup> (USA) / 140gsm (CDN)

**Men's Sizes** S-3XL (Black/Carbon S-5XL)

**Women's Sizes** XS-2XL

**Decoration Options**

**E** **HT** **LP**

**Technology**

**PURE EARTH** Sustainably Sourced

**Collar Stand**  
Maintains collar shape and structure, even after washing

**Pure Earth by STORMTECH™**  
Made from Recycled Polyester and BCI Sourced Cotton for a reduced environmental footprint  
**60% BCI COTTON/ 40%  
RECYCLED POLYESTER**

**Single Chest Pocket**  
Conveniently stow and access personal items

**Flat Felled Side Seams**  
Side seam construction designed to lay comfortably flat and reduce chafing

**PRICE**  
**\$60.00** CAD MSRP | **£45.00** GBP RRP | **€48.00** EURO RRP



M's & W's: Black/Carbon



M's: Earth/White  
(Available in W's)

W's: Zinc/White  
(Available in M's)



# Performance Hoodies

Whether it's a trip to the gym, a night on the town, or a hike to your favorite waterfall; a hoody is that good-natured companion that makes everything better. Effortlessly stylish, this staple has become a wardrobe essential. STORMTECH offers one of the finest collections of highly technical, form-fitting performance and comfy cotton hoodies, so you're sure to have a friend for every walk of life.





# Effortless Style. Technical Performance.

**H2X DRY**  
MOISTURE MANAGEMENT



**POLYGIENE**  
FRESHNESS

**UVX**  
SUN PROTECTION



**anti-snag**  
CONSTRUCTION







## **MONTEBELLO PULLOVER HOODY**

CPF-3 | CPF-3W

The Montebello Pullover Hoody is the perfect blend of comfort and sustainability. Made from sustainably sourced BCI Cotton for superior softness with durable Recycled Polyester to help maintain shape and transport moisture away from the skin. Hem side slits and taped neck seam provide extra comfort and durability. UPF Rating 50+ protects the skin from the sun's rays.

# MONTEBELLO PULLOVER HOODY

CPF-3 | CPF-3W



**Pure Earth by STORMTECH™**  
Made from BCI Sourced Cotton and Recycled Polyester for a reduced environmental footprint  
**58% BCI COTTON/  
38% RECYCLED  
POLYESTER**

**3-Piece Cross-Over Hood with Adjustable Drawcord**  
Adjust the fit for added warmth in cool weather

**Taped Neck Seam**  
For long-lasting shape retention

**STORMTECH H2X-DRY® Moisture Management**  
Draws moisture away from the skin, helping to maintain optimal body comfort

**UPF Rating 50+**  
Protects the skin from the sun's rays

**1x1 Rib Knit Cuffs**  
Rib knit construction provides enhanced durability and comfort

**Hem Side Slits**  
Adds styling detail, comfort and ease of movement at hem



**Fabrication** 58% BCI Cotton/38% Recycled Polyester/  
4% Spandex Single Jersey,  
6.19 oz/yd<sup>2</sup> (USA) / 210gsm (CDN)

**Men's Sizes** S-3XL (Black, Charcoal Heather, Ice Blue S-5XL)

**Women's Sizes** XS-2XL (Black, Charcoal Heather, Ice Blue XS-3XL)

**Decoration Options**



**Technology**



**PRICE**

**\$75.00** CAD MSRP | **£60.00** GBP RRP | **€65.00** EURO RRP



M's & W's: Black



M's & W's: Charcoal Heather



M's & W's: Rust



M's & W's: Ice Blue



M's & W's: Ash Heather





## **ASHBURN PULLOVER HOODY**

WK-3 | WK-3W

The Ashburn Pullover Hoody features a 3-piece crossover hood and combines sustainably sourced BCI Cotton for superior softness with durable Recycled Polyester to help maintain shape and transport moisture away from the skin. Reinforced hem and taped neck seam provide extra comfort and durability. Kangaroo pockets keep your hands warm and UPF Rating 50+ protects the skin from the sun's rays.

# ASHBURN PULLOVER HOODY

WK-3 | WK-3W



**Pure Earth by STORMTECH™**  
Made from BCI Sourced Cotton and Recycled Polyester for a reduced environmental footprint  
**58% BCI COTTON/  
42% RECYCLED  
POLYESTER**

**STORMTECH H2X-DRY® Moisture Management**  
Draws moisture away from the skin, helping to maintain optimal body comfort

**1x1 Rib Knit Hood Trim, Cuffs and Hem**  
Rib knit construction provides enhanced durability and comfort

**3-Piece Cross-Over Hood with Adjustable Drawcord**  
Adjust the fit for added warmth in cool weather

**Taped Neck Seam**  
For long-lasting shape retention

**UPF Rating 50+**  
Protects the skin from the sun's rays

**Kanga Pockets with 1x1 Rib Knit Trim**  
For casual comfort and keeping your hands warm



**Fabrication** 58% BCI Cotton/42% Recycled Polyester Waffle, 5.54 oz/yd<sup>2</sup> (USA) / 188gsm (CDN)

**Men's Sizes** S-3XL (Black, Graphite S-5XL)

**Women's Sizes** XS-2XL (Black, Graphite XS-3XL)

**Decoration Options** **(E)** **(HT)** **(LP)**

**Technology**



**PRICE**  
**\$78.00** CAD MSRP | **£55.00** GBP RRP | **€60.00** EURO RRP



M's & W's: Black



M's & W's: Graphite



M's & W's: Granite

# MONTEBELLO THERMAL 1/4 ZIP PULLOVER

KXP-1 | KXP-1W

Regardless of the season, layering works. It's simple; add a layer for warmth and peel one off to cool down. The Montebello Zip Pullover with a full coverage collar maintains a dry, comfortable environment, while the contoured style lines add aesthetic charm to its functionality. This is layering dexterity at its best.



## Fabrication

(Shell - Solid) 100% Polyester,  
8.85 oz/yd<sup>2</sup> (USA) / 300 gsm (CDN);  
(Shell - Heather) 60% Cotton/40% Polyester,  
8.85 oz/yd<sup>2</sup> (USA) / 300 gsm (CDN)

## Men's Sizes

S-3XL (Dark Charcoal Heather S-5XL)

## Women's Sizes

XS-2XL (Dark Charcoal Heather XS-3XL)

## Decoration Options



## PRICE

**\$90.00** CAD MSRP | **£60.00** GBP RRP | **€65.00** EURO RRP



## MONASHEE 1/4 ZIP PULLOVER TWX-5

## MONASHEE COWL NECK PULLOVER TWX-5W

Adjust on the go. Layering styles adapt to the season; the Monashee 1/4 Zip Pullover with full coverage collar maintains a comfortable environment and adds aesthetic charm to its functionality. This is layering dexterity at its best. Made from Recycled Polyester and sustainably sourced BCI Cotton for a reduced environmental footprint.

### Additional Features

- UPF Rating 50+
- Set-in Sleeves (M's)
- Oversized Mock Neck Collar (W's)
- Contoured Seaming (W's)
- On-Seam Hand Warmer Pockets (W's)
- Raglan Sleeves (W's)
- 1x1 Rib Knit Cuffs and Hem

### Fabrication

59% BCI Cotton/41% Recycled Polyester Fleece, 7.28 oz/yd<sup>2</sup> (USA) / 247gsm (CDN)

### Men's Sizes

S-5XL

### Women's Sizes

XS-2XL

### Decoration Options



### Technology



### PRICE

**\$80.00** CAD MSRP | **£56.00** GBP RRP | **€60.00** EURO RRP

### Pure Earth by STORMTECH™

Made from Recycled Polyester and BCI Sourced Cotton for a reduced environmental footprint

**59% BCI COTTON/  
41% RECYCLED  
POLYESTER**

**1/4 Zip Front (M's)**  
Adjust to shut out the cold or allow heat to escape



W's: Black  
(Available in M's)

M's: Granite Heather  
(Available in W's)

## MONASHEE HENLEY TWX-4 | TWX-4W

A fundamental style staple. This Monashee Henley is eternal for a good reason: versatile, comfortable, and eager to help you tick off your casual spring go-to list. Rib-knit cuff, collar, and hem give you a secure fit and maximize core warmth. Made from sustainably sourced BCI Cotton for superior softness with durable Recycled Polyester fleece to help maintain shape. UPF rating of 50+ protects the skin from the sun's rays.

### Additional Features

- UPF Rating 50+
- 3-Button Henley Placket (M's)
- 5-Button Henley Placket (W's)
- Raglan Sleeves
- Double Topstitching
- Color Matched Trim
- 1x1 Rib Knit Crew Neck Collar, Cuffs, and Hem

### Fabrication

59% BCI Cotton/41% Recycled Polyester Fleece, 7.28 oz/yd<sup>2</sup> (USA) / 247gsm (CDN)

### Men's Sizes

2XS-5XL

### Women's Sizes

XS-2XL (Black, Granite Heather XS-3XL)

### Decoration Options



### Technology



M's & W's: Black

### Pure Earth by STORMTECH™

Made from Recycled Polyester and BCI Sourced Cotton for a reduced environmental footprint

**59% BCI COTTON/  
41% RECYCLED  
POLYESTER**



W's: Granite Heather  
(Available in M's)

M's: Navy  
(Available in W's)

### PRICE

**\$75.00** CAD MSRP | **£50.00** GBP RRP | **€55.00** EURO RRP

# MONASHEE FLEECE SHACKET

TWX-6



The effortlessly stylish Monashee Fleece Shacket charms in all settings. Its on-trend detailing elevates its practical design features. Chest pocket flaps close with a snap, ensuring your items are secure and within easy reach. Adjustable cuffs and a center front snap closure add to the functionality and comfort of this in-demand Jacket. Made from sustainably sourced BCI Cotton for superior softness with durable Recycled Polyester fleece to help maintain shape. UPF rating of 50+ protects the skin from the sun's rays.



**Pure Earth by STORMTECH™**  
Made from BCI Sourced Cotton and Recycled Polyester for a reduced environmental footprint  
**59% BCI COTTON/  
41% RECYCLED POLYESTER**

**Ultra-Soft Sweatshirt Fleece**  
Ultra-soft and lightweight fabric provides ample warmth and comfort when you need it most

**UPF Rating 50+**  
Protects the skin from the sun's rays

**Cuff Placket with Snaps**  
Provide a more secure fit at the wrist and added style

**Shirt Collar with Collar Stand**  
A classic style that provides structure and wears casually

**Flapped Chest Pockets with Snap Closure**  
Allow you to conveniently stow and quickly access personal items

**Durable and Hard-Wearing Center Front Snap Closure**  
Easy to wear casually or to work

**Extended Sizing (Black only)**  
Designed to accommodate an expanded size range from 2XS-5XL

**Fabrication** 59% BCI Cotton/41% Recycled Polyester Fleece, 7.28 oz/yd<sup>2</sup> (USA) / 247gsm (CDN)

**Unisex Sizes** 2XS-3XL (Black 2XS-5XL)

**Decoration Options** **E** **HT** **LP**

**Technology**



Sustainably Sourced



**PRICE**

**\$100.00** CAD MSRP | **£75.00** GBP RRP | **€80.00** EURO RRP



Black



Charcoal Heather



Granite Heather





# MONASHEE FLEECE CREW NECK

TWX-1 | TWX-1W

- Additional Features**
- Raglan Sleeves
  - UPF Rating 50+
  - 1x1 Rib Knit Cuffs and Hem
  - Double Topstitching

**Fabrication**

59% BCI Cotton/  
41% Recycled Polyester Fleece,  
7.28 oz/yd<sup>2</sup> (USA) / 247gsm (CDN)

**Men's Sizes**

XS-3XL (Black, Navy, Charcoal Heather,  
Granite Heather XS-5XL)

**Women's Sizes**

XS-2XL  
(Black, Charcoal Heather XS-3XL)

**Decoration Options**

**E** **HT** **LP**

**Technology**

**PRICE**  
\$72.00 CAD MSRP | £50.00 GBP RRP | €55.00 EURO RRP

**1x1 Rib Crew New Collar**  
Rib knit construction provides enhanced durability and comfort

**Pure Earth by STORMTECH™**  
Made from Recycled Polyester and BCI Sourced Cotton for a reduced environmental footprint  
**59% BCI COTTON/  
41% RECYCLED POLYESTER**



W's: Charcoal Heather (Available in M's)

M's: Oatmeal Heather (Available in W's)



M's & W's: Black

M's & W's: Navy

M's & W's: Taupe

M's: Denim Heather

M's: Mineral

M's: Granite Heather

# YUKON CREW PULLOVER

CFW-1 | CFW-1W

- Additional Features**
- Set-In Sleeves
  - 2x2 Rib Knit Crew Neck Collar
  - Tonal Cover Stitching

**Fabrication**

70% Cotton/ 30% Polyester,  
11.80 oz/yd<sup>2</sup> (USA)/ 400gsm (CDN)

**Men's Sizes**

S-3XL (Black, Carbon Heather S-5XL)

**Women's Sizes**

XS-2XL

**Decoration Options**

**E** **HT** **LP**

**PRICE**  
\$70.00 CAD MSRP | £50.00 GBP RRP | €55.00 EURO RRP

**Ribbed V-Stitch Styling**  
Creates texture and functional classic fashion styling

**2x2 Rib Knit Cuff and Hem**  
Rib knit construction provides enhanced durability and comfort



W's: Carbon Heather (Available in M's)

M's: Black (Available in W's)



M's & W's: Peat



## **MONASHEE FLEECE PULLOVER HOODY**

TWX-3 | TWX-3W

The Monashee Pullover Hoodie is a basic wardrobe favorite. Hand pockets and a drawcord adjustable hood provides practical protection from wind and crisp weather conditions. The rib knit construction at the hem and cuffs delivers enhanced durability while providing lounging comfort that exudes an effortlessly trendy edge. Made from sustainably sourced BCI Cotton for superior softness with durable Recycled Polyester fleece to help maintain shape. UPF rating of 50+ protects the skin from the sun's rays.

# MONASHEE FLEECE PULLOVER HOODY

TWX-3 | TWX-3W



**3-Piece Hood with Adjustable Drawcord**  
Provides maximum weather protection

**Pure Earth by STORMTECH™**  
Made from Recycled Polyester and BCI Sourced Cotton for a reduced environmental footprint  
**59% BCI COTTON/ 41% RECYCLED POLYESTER**

**Kanga Pockets (M's)**  
For casual comfort and keeping your hands warm

**1x1 Rib Knit Cuffs and Hem**  
Rib knit construction provides enhanced durability and comfort



**Double Topstitching**  
For added strength and visual appeal

**Color Matched Trim**  
Subtle tone on tone color palette

**On-Seam Hand Pockets (W's)**  
For stowing personal items and keeping hands warm

**UPF Rating 50+**  
Technology that protects the skin from the sun's rays

**Fabrication** 59% BCI Cotton/41% Recycled Polyester Fleece, 7.28 oz/yd<sup>2</sup> (USA) / 247gsm (CDN)

**Men's Sizes** XS-3XL (Black, Navy, Charcoal Heather, Granite Heather XS-5XL)

**Women's Sizes** XS-2XL (Black, Charcoal Heather XS-3XL)

**Technology**



**Decoration Options**



**PRICE**  
\$90.00 CAD MSRP | £65.00 GBP RRP | €70.00 EURO RRP



M's & W's: Black

M's & W's: Charcoal Heather

M's & W's: Taupe

M's & W's: Oatmeal Heather

M's & W's: Navy

M's: Granite Heather

M's: Denim Heather

M's: Moss Heather

M's: Mineral



## **DOLOMITE FLEECE HOODY**

CNX-1 | CNX-1W

The Dolomite Fleece Hoody is a Fall essential. It's your easy-to-carry, on-hand warmth for unexpected cold snaps. Cut out the chill by adjusting the attached hood drawcord. Hand warmer pockets keep hands toasty and the sleek look is completed with 2x2 rib knit cuffs and hem for enhanced durability.

# DOLOMITE FLEECE HOODY

CNX-1 | CNX-1W

**Reinforced Drawcord Grommets**  
For long-lasting durability

**Zippered Chest Pocket (M's)**  
Protects your valuables safely and securely with easy access

**Heavy Duty 11.8 oz Brushed Cotton Polyester Fleece**

**Heavy Duty 2x2 Rib Knit Cuffs and Hem**  
Rib knit construction provides enhanced durability and comfort

**Adjustable 3-Piece Hood with Rib Knit Trim**  
Adjust the fit of the hood for maximum warmth in cool weather

**Chin Saver**  
Provides next to skin and wind protection

**Heavy Gauge Zipper with Metal Finish**  
For a top to bottom secure fit

**Articulated Elbows**  
Provide optimal range of motion

**Hand Warmer Pockets**  
Keeps your hands warm and dry

**Fabrication** 76% Cotton/24% Polyester Fleece,  
11.80 oz/yd<sup>2</sup> (USA) / 400gsm (CDN)

**Men's Sizes** S-3XL (Black, Dolphin S-5XL)

**Women's Sizes** XS-2XL (Black, Dolphin XS-3XL)

**Decoration Options**



**PRICE**

**\$130.00** CAD MSRP | **£90.00** GBP RRP | **€100.00** EURO RRP



M's & W's: Black



M's & W's: Dolphin



M's & W's: Navy



# HALIFAX HOODY

SFZ-3 | SFZ-3W

Technical, water-repellent urban athletic design with technical features. Featuring PFC-Free water-repellent finish to repel water. The Halifax Hoody doubles as a lightweight outer garment for a run in cool weather, or as an urban casual layering piece.

**PFC-Free Water Repellent Finish**  
Provides ample water resistance in wet weather

**Articulated Action Elbows**  
Provide optimal range of motion

**Kanga Pockets (M's)**  
For stowing personal items and keeping hands warm

**On-Seam Hand Pockets (W's)**  
For stowing personal items and keeping hands warm



**Fabrication** 100% Polyester, 5.46oz/yd<sup>2</sup> (USA) / 185gsm (CDN)

**Men's Sizes** S-5XL

**Women's Sizes** XS-2XL

**Decoration Options**



**Technology**



**PRICE**  
\$90.00 CAD MSRP | £60.00 GBP RRP | €65.00 EURO RRP



M's & W's: Black



M's & W's: Grey Melange

## DOCKYARD PERFORMANCE FULL ZIP HOODY

CFZ-6 | CFZ-6W

Enjoy all day confidence with this classic, athletic-inspired performance hoody that features an ultra-soft cotton-poly blend treated with Polygiene Stays Fresh® Technology to control odor; wear more, wash less. A full-zip front with zippered welt pockets for keeping your hands warm, and ribbed cuffs and hem for premium design detailing. Adjustable hood with drawcord provides weather protection.

- Additional Features**
- Articulated Elbows
  - Underarm Gusset
  - Contoured Hem
  - 1x1 Rib Knit Cuffs and Hem
  - Center Front Zipper
  - On Seam Zippered Hand Pockets

**Fabrication** (Shell) 47% Polyester/47% Cotton/6% Spandex, 8.85 oz/yd<sup>2</sup> (USA) / 300gsm (CDN); (Lining) 60% Cotton/40% Polyester

**Men's Sizes** S-5XL

**Women's Sizes** XS-3XL

**Decoration Options** 

**Technology**  

**PRICE**  
**\$100.00** CAD MSRP | **£75.00** GBP RRP | **€77.00** EURO RRP



## DOCKYARD PERFORMANCE HOODY

CFH-3 | CFH-3W

Built with cotton-rich performance fabric treated with Polygiene® Freshness Technology to control odor; wear more, wash less. The Dockyard Performance Hoody allows for easy movement and maintains a smooth silhouette in any position. A perfect fit for work or play, the ribbed cuffs and hem provide ultimate comfort. Adjustable hood with drawcord provides weather protection.

- Additional Features**
- Articulated Action Elbows
  - On-Seam Hand Pockets
  - 1x1 Rib Knit Cuffs and Hem

**Fabrication** (Shell) 47% Polyester/47% Cotton/6% Spandex, 8.85 oz/yd<sup>2</sup> (USA) / 300gsm (CDN); (Lining) 60% Cotton/40% Polyester

**Men's Sizes** S-5XL

**Women's Sizes** XS-2XL

**Decoration Options**  

**Technology** 

**PRICE**  
**\$95.00** CAD MSRP | **£65.00** GBP RRP | **€70.00** EURO RRP





# Performance Layering

It's fair to say that spirited feelings are an unavoidable side effect of being surrounded by clear lakes and majestic snowcapped peaks. STORMTECH has drawn inspiration from those feelings and created tactile equivalents by using only the finest soft, synthetic materials and cotton in the manufacturing of all our fleece and layering styles. This has earned us 'best in fleece' status. Our collection consists of an array of base and mid layers that are lightweight, functional and perfect for a warm layer or light sweater. So layer up and feel the joy.





# Comfort that Moves with You

**H2X DRY**  
MOISTURE MANAGEMENT



**POLYGIENE**  
FRESHNESS

**UVX**  
SUN PROTECTION



Recycled Polyester



Sustainably Sourced



4-way stretch



anti-snap  
CONSTRUCTION



# ANDORRA JACKET

EQX-1 | EQX-1W

Classically styled, this double knit engineered quilted ottoman jacket is a versatile adventurer that is as content on the city streets as it is on a mountain top. The extra high collar allows for core temperature regulation and provides a warm, comfortable fit. The Andorra Jacket features include warm, brushed tricot kanga pockets and hardwearing taslan trim on pocket welts and collar.

- Additional Features**
- Full Internal Storm Flap
  - Internal Audio Sleeve

**Fabrication** 100% Polyester, 8.85 oz/yd<sup>2</sup> (USA) / 300 gsm (CDN)

**Men's Sizes** S-3XL (Black S-5XL)

**Women's Sizes** XS-2XL

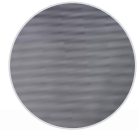
**Decoration Options** **E** **HT** **LP**

**PRICE**  
**\$80.00** CAD MSRP | **£50.00** GBP RRP | **€55.00** EURO RRP



M's & W's: Black

**Protective Trim**  
 Trim on pocket welts and collar for extended durability



**Quilted Ottoman Fabric**



W's: Navy  
 (Available in M's)

M's: Graphite  
 (Available in W's)

**Hand Pockets with Brushed Tricot**  
 Perform a dual task of warming hands and stowing personal items

# MISTRAL FLEECE JACKET

TMX-2 | TMX-2W

The Mistral Fleece Jacket features lightweight, single-face fleece and H2X-DRY® fabric that wicks moisture away from the skin, helping regulate optimum body comfort during high-exertion activities. Versatile and functional features mean this piece, with its bold contrast design, will become your 'goto' lightweight jacket.

- Additional Features**
- Articulated Shoulders

**Fabrication** 97% Polyester / 3% Spandex Interlock, 7.82oz/yd<sup>2</sup> (USA)/265gsm (CDN)

**Men's Sizes** S-3XL (Black S-5XL)

**Women's Sizes** XS-2XL

**Decoration Options** **E** **HT** **LP**

**Technology** **H2XDRY**  
 MOISTURE MANAGEMENT

**PRICE**  
**\$95.00** CAD MSRP | **£70.00** GBP RRP | **€75.00** EURO RRP



M's & W's: Black

**STORMTECH H2X-DRY® Moisture Management**  
 Draws moisture away from the skin, helping to maintain optimal body comfort

**Contoured Collar**  
 Provides added comfort and flexibility



W's: Bright Red  
 (Available in M's)

M's: Dolphin  
 (Available in W's)

**Contoured Hem**  
 Ergonomic design that provides freedom of movement with a fashionably tailored fit



## MONTAUK FLEECE JACKET

SX-5 | SX-5W

### Additional Features

- Anti-Pill Recycled Polyester Polar Fleece
- Brushed Tricot Lined Collar, Cuff and Hem
- Contoured Side Panels
- Flatlock Seams
- Internal Pockets
- Low-Profile Chin Saver

### Fabrication

75% Recycled Polyester/ 25% Polyester Fleece,  
6.93 oz/yd<sup>2</sup> (USA) / 235gsm (CDN)

### Men's Sizes

S-3XL (Black, Midnight, Granite S-5XL)

### Women's Sizes

XS-2XL (Black XS-3XL)

### Decoration Options



### Technology



**Zippered Hand Warmer Pockets**  
Perform a dual task of warming hands and stowing personal items

**Pure Earth by STORMTECH™**  
Made from Recycled Polyester for a reduced environmental footprint  
**75% RECYCLED POLYESTER**



W's: Ice Blue  
**NEW**

M's: Granite  
(Available in W's)

### PRICE

**\$65.00** CAD MSRP | **£45.00** GBP RRP | **€45.00** EURO RRP



M's & W's: Black

M's & W's: Midnight

M's & W's: Sage Green  
**NEW**

M's: Rust  
**NEW**

## MONTAUK FLEECE VEST

VX-5 | VX-5W

### Additional Features

- Anti-Pill Recycled Polyester Polar Fleece
- Brushed Tricot Lined Collar and Hem
- Contoured Side Panels
- Flatlock Seams
- Internal Pockets
- Low-Profile Chin Saver

### Fabrication

75% Recycled Polyester/ 25% Polyester Fleece,  
6.93 oz/yd<sup>2</sup> (USA) / 235gsm (CDN)

### Men's Sizes

S-3XL (Black S-5XL)

### Women's Sizes

XS-2XL (Black XS-3XL)

### Decoration Options



### Technology



**Zippered Hand Warmer Pockets**  
Perform a dual task of warming hands and stowing personal items

**Pure Earth by STORMTECH™**  
Made from Recycled Polyester for a reduced environmental footprint  
**75% RECYCLED POLYESTER**



W's: Granite  
(Available in M's)

M's: Midnight  
(Available in W's)

### PRICE

**\$55.00** CAD MSRP | **£40.00** GBP RRP | **€45.00** EURO RRP



M's & W's: Black

M's & W's: Sage Green

M's: Rust

W's: Ice Blue



## **TREELINE PERFORMANCE JACKET**

HTZ-3 | HTZ-3W

Streamlined silhouette base layer with H2X-DRY® moisture management technology and environmentally sustainable Recycled Polyester and Spandex that wicks moisture away from the skin. The Treeline Performance Jacket features a brushed-back fleece which offers superior thermal properties, while allowing for excellent breathability. A low-profile chin saver provides extra next-to-skin comfort.

NEW STYLE  
NEW STYLE

## TREELINE PERFORMANCE JACKET

HTZ-3 | HTZ-3W

### Additional Features

- Low-Profile Chin Saver
- Articulated Action Shoulders and Elbows
- Contour Side Panels
- Concealed Zippered Hand Pockets with Brushed Tricot
- Thumb Holes

### Fabrication

44% Recycled Polyester/44% Regular Polyester/  
12% Spandex, 796 oz/yd<sup>2</sup> (USA) / 270gsm (CDN)

### Men's Sizes

S-3XL (Black, Black Heather,  
Granite Heather S-5XL)

### Women's Sizes

XS-2XL (Black, Black Heather,  
Granite Heather XS-3XL)

### Decoration Options



### Technology



### PRICE

**\$85.00** CAD MSRP | **£65.00** GBP RRP | **€70.00** EURO RRP

Pure Earth by STORMTECH™  
Made from Recycled Polyester for a  
reduced environmental footprint  
**44% RECYCLED POLYESTER**

**STORMTECH  
H2X-DRY®  
Moisture  
Management**  
Draws moisture  
away from the  
skin, helping to  
maintain optimal  
body comfort



W's: Dark Navy Heather  
(Available in M's)

M's: Black Heather  
(Available in W's)



M's & W's: Black

M's & W's:  
Classic Blue  
Heather

M's & W's:  
Bright Red

M's & W's:  
Granite Heather

M's & W's: Sage  
Green Heather

M's: Rust  
Heather

W's: Ice Blue  
Heather

## TREELINE PERFORMANCE 1/4 ZIP PULLOVER

HTZ-2 | HTZ-2W

### Additional Features

- 1/4 Zip
- Articulated Action Shoulders
- Contour Side Panels
- Flatlock Seams
- Chin Saver

### Fabrication

44% Recycled Polyester/44% Polyester/  
12% Spandex, 796 oz/yd<sup>2</sup> (USA) / 270gsm (CDN)

### Men's Sizes

S-3XL (Black Heather S-5XL)

### Women's Sizes

XS-2XL

### Decoration Options



### Technology



Pure Earth by  
STORMTECH™  
Made from Recycled  
Polyester for a reduced  
environmental footprint  
**44% RECYCLED  
POLYESTER**

**STORMTECH  
H2X-DRY®  
Moisture  
Management**  
Draws moisture  
away from the  
skin, helping to  
maintain  
optimal body  
comfort



W's: Dark Navy Heather  
(Available in M's)

M's: Black Heather  
(Available in W's)



M's & W's: Sage  
Green Heather  
**NEW**

M's: Rust Heather  
**NEW**

W's: Ice Blue Heather  
**NEW**

NEW COLORS  
NEW COLORS



## **AUGUSTA 1/4 ZIP LONG SLEEVE**

QT-1 | QT-1W

Base layer solution with H2X-DRY® moisture management technology wicks moisture away from the skin and helps regulate optimum body comfort during high exertion activities. The perfect thermal base layer for a multi-layer system.

## AUGUSTA 1/4 ZIP LONG SLEEVE

QT-1 | QT-1W

**Additional Features**

- Contour Side Panels
- Coverstitching Detail

**Fabrication** 92% Polyester/ 8% Spandex,  
6.19 oz/yd<sup>2</sup> (USA) / 210gsm (CDN)

**Men's Sizes** S-5XL (Black S-6XL)

**Women's Sizes** XS-3XL

**Decoration Options** 

**Technology**  **H2XDRY**  
MOISTURE MANAGEMENT

**PRICE**  
\$60.00 CAD MSRP | £40.00 GBP RRP | €40.00 EURO RRP



M's & W's: Black

**STORMTECH H2X-DRY® Moisture Management**  
Draws moisture away from the skin, helping to maintain optimal body comfort

**Reverse Coil Front 1/4 Zipper**  
For clean styling and adjustability

**Combination Action Shoulders**  
Ergonomic design for free range of movement



M'S: Graphite  
(Available in W's)

W'S: Navy  
(Available in M's)

## DOCKYARD 1/4 ZIP PULLOVER

VQX-1 | VQX-1W

**Additional Features**

- UPF Rating 50+
- Single Chest Pocket (M'S)
- Contoured Seaming (W's)
- Dropped Back with Hem Side Slits
- Double Needle Topstitching

**Fabrication** 100% Polyester Double Pique,  
5.13 oz/yd<sup>2</sup> (USA) / 174gsm (CDN)

**Men's Sizes** S-5XL

**Women's Sizes** XS-2XL

**Decoration Options** 

**Technology**   **POLYGIENE**  
FRESHNESS  **UVX**  
SUN PROTECTION

**PRICE**  
\$50.00 CAD MSRP | £36.00 GBP RRP | €36.00 EURO RRP



M's & W's: Black

**STORMTECH H2X-DRY® Moisture Management**  
Draws moisture away from the skin, helping to maintain optimal body comfort

**1/4 Zip with Chin Saver**  
Adjust to shut out the cold or allow heat to escape

**Polygiene® Stays Fresh Technology**  
Prevents the growth of odor causing bacteria. Wear more, wash less



M'S: Dolphin Heather  
(Available in W's)

W'S: Navy Heather  
(Available in M's)





## **MILANO CREW NECK L/S**

HXR-2 | HXR-2W

A lightweight stretch layering essential that delivers comfort and warmth on cold days. Classically styled, Milano Crew Neck Long Sleeve is a versatile adventurer that is as content on the city streets as it is on a mountain top. Made from Recycled Polyester content for a reduced environmental footprint with 9% Spandex and articulated shoulders for an unrestricted range of movement.

## MILANO 1/4 ZIP PULLOVER

HXR-1 | HXR-1W

### Additional Features

- 4-Way Stretch Fabric
- Flatlock Seams
- Low-Profile Chin Saver
- Articulated Action Shoulder
- Contour Side Panels

### Fabrication

46% Recycled Polyester/45% Regular Polyester/  
9% Spandex, 6.55 oz/yd<sup>2</sup> (USA) / 222gsm (CDN)

### Men's Sizes

S-3XL (Black S-6XL) (Charcoal Heather S-5XL)

### Women's Sizes

XS-2XL (Charcoal Heather, Black XS-3XL)

### Decoration Options



### Technology



### PRICE

\$65.00 CAD MSRP | £40.00 GBP RRP | €40.00 EURO RRP

**Pure Earth by STORMTECH™**  
Made from Recycled Polyester for a reduced environmental footprint  
**46% RECYCLED POLYESTER**

**1/4 Zip Front**  
Adjust to shut out the cold or allow heat to escape

**STORMTECH H2X-DRY® Moisture Management**  
Draws moisture away from the skin, helping to maintain optimal body comfort

**UPF Rating 50+**  
Technology that protects the skin from the sun's rays



M's: Classic Blue Heather  
(Available in W's)

W's: Charcoal Heather  
(Available in M's)



M's & W's: Black

M's & W's: Sage Green  
Heather  
**NEW**

M's: Rust Heather  
**NEW**

W's: Ice Blue Heather  
**NEW**

## MILANO CREW NECK L/S

HXR-2 | HXR-2W

### Additional Features

- Flatlock Seams
- Self-Fabric Crew Neck Collar
- 4-Way Stretch Fabric
- Articulated Action Shoulder
- Contour Side Panels

### Fabrication

46% Recycled Polyester/45% Polyester/  
9% Spandex, 6.55 oz/yd<sup>2</sup> (USA) / 222gsm (CDN)

### Men's Sizes

S-3XL (Black S-5XL)

### Women's Sizes

XS-2XL (Black XS-3XL)

### Decoration Options



### Technology



**Pure Earth by STORMTECH™**  
Made from Recycled Polyester for a reduced environmental footprint  
**46% RECYCLED POLYESTER**

**UPF Rating 50+**  
Protects the skin from the sun's rays

**STORMTECH H2X-DRY® Moisture Management**  
Draws moisture away from the skin, helping to maintain optimal body comfort



M's: Charcoal Heather  
(Available in W's)

W's: Classic Blue Heather  
(Available in M's)



M's & W's: Black

M's & W's: Sage  
Green Heather

M's: Rust Heather

## **BASE THERMAL 1/4 ZIP**

HTZ-1 | HTZ-1W

Base camp of layering. Streamlined base layer with H2X-DRY® moisture management technology that wicks moisture away from the skin. The Base Thermal 1/4 Zip features a grid back fleece, which offers superior thermal properties, while allowing for excellent airflow and breathability.



## **PULSE FLEECE PULLOVER**

TFW-1 | TFW-1W

Streamlined base layer features H2X-DRY® fabric that wicks moisture away from the skin, helping regulate optimum body comfort during high-exertion activities. This 1/4-zip contours the body, while contrast seam and zip makes you stand out from the crowd. The perfect thermal base layer for a multi-layer system.

## BASE THERMAL 1/4 ZIP

HTZ-1 | HTZ-1W

- Additional Features**
- Contrast Cover Stitching
  - Contour Side Panel

**Fabrication** 95% Polyester/5% Spandex Drop Needle Double Knit Fleece, 7.08 oz/yd<sup>2</sup> (USA) / 240gsm (CDN)

**Men's Sizes** S-3XL (Dolphin S-6XL)

**Women's Sizes** XS-2XL (Dolphin XS-3XL)

**Decoration Options**   

**Technology**  **H2XDRY**  
MOISTURE MANAGEMENT

**PRICE**  
\$75.00 CAD MSRP | £59.00 GBP RRP | €55.00 EURO RRP



M's & W's: Dolphin

**STORMTECH H2X-DRY® Moisture Management**  
Draws moisture away from the skin, helping to maintain optimal body comfort

**Reverse Coil Front 1/4 Zipper**  
Adjust to shut out the cold or allow heat to escape

**Snag Resistant Fabric**  
Leaves the garment looking new wear after wear



**Double Knit Ottoman Fleece**



M's: Ocean  
(Available in W's)

W's: Earth  
(Available in M's)

## PULSE FLEECE PULLOVER

TFW-1 | TFW-1W

- Additional Features**
- Contrast Cover Stitch Detail
  - Thumb Holes (W's)

**Fabrication** 92% Polyester, 8% Spandex Single Jersey, 5.90 oz/yd<sup>2</sup> (USA)/200gsm (CDN)

**Men's Sizes** S-3XL (Black/Carbon S-5XL)

**Women's Sizes** XS-2XL

**Decoration Options**   

**Technology**  **H2XDRY**  
MOISTURE MANAGEMENT

**PRICE**  
\$60.00 CAD MSRP | £40.00 GBP RRP | €36.00 EURO RRP



M's & W's: Black/Carbon

M's & W's: Black/  
Bright Red

M's & W's: Navy/Carbon

**1/4 Zip**  
Adjust to shut out the cold or allow heat to escape

**Chin Saver**  
Provides next to skin and wind protection



W's: Black/Kiwi  
(Available in M's)

M's: Black/Electric Blue  
(Available in W's)



M'S VERTEX STORMSHELL RX-2

# Technical Shells

Born in the rugged west coast rainforests of British Columbia, Canada, STORMTECH's designs are inspired through the lessons learned from the rain, snow, and sun. We pay painstaking attention to mother nature's varying moods in order to develop the very best in technical outerwear. With design excellence and functionality that blends exclusive technologies, such as H2XTREME®, we build hard-wearing garments that provide maximum protection and comfort so you can get out there and explore with confidence.



M'S EPSILON 2 SOFTSHELL HR-1



M'S PATROL SOFTSHELL XB-3





# Climate Comfort

## VERTEX STORMSHELL RX-2

Welded Hood Brim

Helmet Compatible,  
Full-Coverage Hood

Concealed Hood Adjustments  
with Easy-Access Drawcord

STORMTECH  
3-Layer H2XTREME®  
20,000/10,000  
Waterproof /  
Breathable Outer Shell

Two-Way  
Waterproof Pit Zips

Waterproof  
Zippered Hand  
Pockets

High-Performance  
Windproof Outer  
Shell with Mechanical  
Stretch

Ergonomic,  
Full-Coverage Center  
Front Neck

Fully Sealed  
Waterproof Seams

Waterproof Zippered  
Sleeve Pocket

YKK® AquaGuard®  
Center Front  
Zipper

Pure Earth by  
STORMTECH™

Laser cut  
Adjustable Cuffs



**H2XTREME**  
WATERPROOF/BREATHABLE  
STORM PROTECTION





## **VERTEX STORMSHELL**

RX-2 | RX-2W

Extreme weather protection with full coverage storm hood and YKK® AquaGuard® waterproof zipper. The Vertex Stormshell features 3-Layer H2XTREME® waterproof/breathable technology and an advanced articulation and ergonomic fit with mechanical stretch fabric, allowing for a full range of unrestricted movement. Pit zippers help regulate your core temperature, and an articulated adjustable hood with a welded brim provides a comfortable fit and sheds water away from your face. The Vertex Stormshell is built with regular and recycled polyester fabrics for a reduced environmental footprint.

# VERTEX STORMSHELL

RX-2 | RX-2W

## STORMTECH H2XTREME® Waterproof / Breathable Outer Shell

3-Layer Outer Shell offers a high level of waterproofing while allowing moisture vapor to exit the garment

## Pure Earth by STORMTECH™ Made from Recycled Polyester for a reduced environmental footprint 45% RECYCLED POLYESTER

**PFC-Free Durable  
Water Repellent Finish**  
Environmentally-  
friendly finish enhances  
waterproofing  
performance

**High-Performance  
Windproof Outer Shell  
with Mechanical Stretch**  
100% windproof outer  
shell fabric helps  
maintain thermal  
performance by keeping  
the heat in

**Concealed Hood Adjustments  
with Easy-Access Drawcord**  
Adjusts externally and away  
from your face

**Helmet Compatible,  
Full-Coverage Hood**  
Provides maximum weather  
protection and extra room for  
your protective headwear needs

**Ergonomic, Full-Coverage  
Center Front Neck**  
Provides optimal range of  
motion and ultimate weather  
protection

**Fully Sealed Seams**  
Ensure that no water enters  
your jacket, leaving you dry and  
comfortable for hours

**Waterproof Zippered  
Hand Pockets**  
Prevents water from  
penetrating through  
zipper to keep your  
valuables safe and dry

**Adjustable Cuffs**  
Adjust to provide a  
more secure fit and  
keep the elements out



**WATERPROOF  
LEVEL 3**  
20,000MM



**BREATHABLE  
LEVEL 3**  
10,000G/M²



**WINDPROOF**



**+5°C TO -10°C  
41°F TO 14°F**



**FULLY SEALED  
SEAMS**

## Additional Features

- YKK® AquaGuard® Center Front Zipper
- Articulated Elbows
- Two-Way Waterproof Pit Zips
- Welded Hood Brim
- Welded Brushed Tricot Back Neck Reinforcement
- Internal Mesh Stash Pockets
- Adjustable Dropped-Back Hem
- Waterproof Zippered Sleeve Pocket

## Fabrication

55% Polyester/ 45% Recycled Polyester Mechanical Stretch bonded with 100% Recycled Polyester Single Jersey, 5.31 oz/yd² (USA) / 180gsm (CDN)

## Men's Sizes

S-3XL (Granite/Black S-5XL)

## Women's Sizes

XS-2XL (Granite/Black XS-3XL)

## Decoration Options



## PRICE

**\$350.00** CAD MSRP | **£260.00** GBP RRP | **€280.00** EURO RRP

## Technology

**H2XTREME**  
WATERPROOF/BREATHABLE  
STORM PROTECTION



M's & W's: Granite/Black



M's & W's: Dusk/Midnight



M's & W's: Chive/Cypress



M's & W's: Red/Crimson



## **ARTIMUS TECHNICAL SHELL**

XJK-1M | XJK-1W

A shell that is resolute about providing maximum outdoor protection and designed with advanced technical features including 2.5 layer waterproof and breathable outer shell. The urban-styled Artimus Technical Shell shuts the rain and the wind out with its exclusive H2XTREME® waterproof/breathable technology, attached hood, and YKK® AquaGuard® center front zipper. Head-to-toe comfort with an ergonomic design that promotes unrestricted movement.

# ARTIMUS TECHNICAL SHELL

XJK-1M | XJK-1W



## STORMTECH H2XTREME® Waterproof / Breathable Outer Shell

2.5-Layer Outer Shell offers a high level of waterproofing while allowing moisture vapor to exit the garment

## Pure Earth by STORMTECH™ Made from Recycled Polyester for a reduced environmental footprint

45% RECYCLED POLYESTER

## PFC-Free Durable Water Repellent Finish

Environmentally-friendly finish enhances waterproofing performance

## High-Performance Windproof Outer Shell with Mechanical Stretch

100% windproof outer shell fabric helps maintain thermal performance by keeping the heat in

## Full Coverage Attached Hood with Partial Elasticized Opening

Provides immediate wind and weather protection when needed most

## Fully Sealed Seams

Ensure that no water enters your jacket, leaving you dry and comfortable for hours

## Underarm Gussets

Advanced patterning helps provide optimal range of motion

## YKK® AquaGuard® Center Front Zipper

Super durable, waterproof YKK® AquaGuard® front zipper keeps wet weather from penetrating through

## Partial Elastic Cuffs with Adjustable Tabs

Block cold air from entering the sleeve and offers a relaxed fit option



**WATERPROOF**  
LEVEL 3  
10,000MM



**BREATHABLE**  
LEVEL 3  
10,000G/M<sup>2</sup>



**WINDPROOF**



**+5°C TO -10°C**  
41°F TO 14°F



**FULLY SEALED  
SEAMS**

## Additional Features

- 360° Perforated Core Ventilation
- Articulated Elbows
- Full Coverage Front Collar
- Welded Hood Brim
- Welded Back Neck Reinforcement
- Low-Profile Zippered Hand Pockets
- Single Hand Hem Adjustment

## Fabrication

55% Polyester/45% Recycled Polyester Mechanical Stretch Ripstop 2.5 Layer, 2.95 oz/yd<sup>2</sup> (USA) / 100gsm (CDN)

## Men's Sizes

S-3XL (Black S-5XL)

## Women's Sizes

XS-2XL (Black XS-3XL)

## Decoration Options



## Technology

**H2XTREME**  
WATERPROOF/BREATHABLE  
STORM PROTECTION



## PRICE

**\$250.00** CAD MSRP | **£180.00** GBP RRP | **€200.00** EURO RRP



M's & W's: Black



M's & W's: Dolphin



M's & W's: Navy



## **SCIROCCO LIGHTWEIGHT SHELL**

SSR-5 | SSR-5W

A shell that is resolute about providing maximum outdoor protection. The urban-styled Scirocco Lightweight Shell shuts the rain and the wind out with its exclusive H2XTREME® waterproof/breathable technology, rollaway hood, and waterproof zippered chest pockets. Comfort comes standard with an ergonomic design that promotes unrestricted movement.



## **STRATUS LIGHTWEIGHT SHELL**

SSR-3 | SSR-3W

Ultra-lightweight, H2XTREME® technical outer shell engineered to perform under the most challenging weather conditions, with superior sealed seam technology for enhanced waterproof protection.

## SCIROCCO LIGHTWEIGHT SHELL

SSR-5 | SSR-5W

### Additional Features

- PFC-Free Durable Water Repellent Finish
- Rollaway Hood with Adjustable Drawcord
- Fully Seam Sealed
- Mesh Lined Back Vent
- Waterproof Zippered Hand Pockets with Brushed Tricot
- Brushed Tricot Lined Collar
- Waterproof Center Front Zipper
- Waterproof Zippered Chest Pockets
- Contoured Seaming (W's)
- Articulated Sleeves

### Fabrication

(Shell) 100% Recycled Polyester Twill, 4.10 oz/yd<sup>2</sup> (USA) / 139gsm (CDN);  
(Lining) 100% Recycled Polyester

### Men's Sizes

S-3XL (Black, Navy S-6XL)

### Women's Sizes

XS-2XL (Black, Navy XS-3XL)

### Decoration Options



### Technology



**WATERPROOF**  
LEVEL 3  
10,000MM



**BREATHABLE**  
LEVEL 3  
10,000G/M<sup>2</sup>



+20°C TO +5°C  
68°F TO 41°F



**FULLY SEALED**  
SEAMS

**PURE EARTH BY STORMTECH™**  
Made from Recycled Polyester for a reduced environmental footprint  
**100% RECYCLED POLYESTER**



### STORMTECH H2XTREME® Waterproof / Breathable Outer Shell

Offers a high level of waterproofing while allowing moisture vapor to exit the garment

### Adjustable Cuffs and Hem

Allow you to adjust the fit of the cuff precisely for maximum comfort and performance in cold weather



W's: Sage  
(Available in M's)  
NEW

M's: Navy  
(Available in W's)



M's & W's: Black



M's & W's: Granite



M's & W's: Rust  
NEW

### PRICE

**\$200.00** CAD MSRP | **£150.00** GBP RRP | **€150.00** EURO RRP

## STRATUS LIGHTWEIGHT SHELL

SSR-3 | SSR-3W

### Additional Features

- Sealed Seams
- Full Center Front Zipper With Welts
- On-Seam Side Zippered Welt Pockets
- Partial Elastic Cuffs with Adjustable Tabs
- Internal Full-Length Stormflap
- Upper Back Yoke with Mesh
- Lined Vents
- Open Hem with Adjustable Drawcord

### Fabrication

100% Polyester Dobby, 2.65oz/yd<sup>2</sup> (USA) / 90gsm (CDN) with 100% Polyester Lining

### Men's Sizes

S-3XL (Black S-6XL)

### Women's Sizes

XS-2XL (Black XS-3XL)

### Decoration Options



### Technology



**WATERPROOF**  
LEVEL 2  
5,000MM



**BREATHABLE**  
LEVEL 2  
5,000G/M<sup>2</sup>



+20°C TO +5°C  
68°F TO 41°F



**SEALED**  
SEAMS

**STORMTECH H2XTREME®**  
**Waterproof / Breathable Outer Shell**  
Offers a high level of waterproofing while allowing moisture vapor to exit the garment

### Zippered Chest Pocket

Protects your valuables safely and securely with easy access

**Concealed Rollaway Hood**  
Convenient roll out or roll in for a versatile look and variable weather protection



W's: Black  
(Available in M's)

M's: Navy  
(Available in W's)

### PRICE

**\$160.00** CAD MSRP | **£120.00** GBP RRP | **€130.00** EURO RRP



## **OLYMPIA SHELL**

GXJ-2 | GXJ-2W

A wet, rainy forecast should not get in the way of any outdoor activity. Come prepared with the ultralight Olympia Shell with PFC-Free waterproof, breathable fabric, adjustable hood and a full-length stormflap. This lightweight shell offers articulated comfort and superior, technical, weather-ready features.

## OLYMPIA SHELL

GXJ-2 | GXJ-2W | GXJ-2R

### Additional Features

- Critically Sealed Seams
- Adjustable Hem with Drawcord
- Articulated Sleeves
- Zippered Chest Pocket
- Adjustable Cuffs
- Internal Full-Length Stormflap
- Zippered Pockets

### Fabrication

100% Polyester Ripstop, 3.07oz/yd<sup>2</sup> (USA) / 104gsm (CDN) with 100% Polyester Lining

### Men's Sizes

S-3XL (Black/Black, Granite/Black, Navy/Granite S-5XL) (GXJ-2R: S-5XL)

### Women's Sizes

XS-2XL (Black/Black, Granite/Black, Navy/Granite XS-3XL)

### Decoration Options



### Technology



### STORMTECH H2XTREME®

#### Waterproof / Breathable Outer Shell

Offers a high level of waterproofing while allowing moisture vapor to exit the garment

#### Adjustable Attached Hood

Conveniently adjusts for customizable warmth and protection from inclement weather

#### PFC-Free Water Repellent Finish

Provides ample water resistance in wet weather



M's: Navy/Granite (Available in W's)

W's: Black/Bright Red (Available in M's)



**WATERPROOF LEVEL 2**  
5,000MM



**BREATHABLE LEVEL 2**  
5,000G/M<sup>2</sup>



+20°C TO +5°C  
68°F TO 41°F



**CRITICALLY SEALED SEAMS**

### PRICE (GXJ-2)

**\$140.00** CAD MSRP | **£100.00** GBP RRP | **€100.00** EURO RRP

### PRICE (GXJ-2R)

**\$160.00** CAD MSRP | **£100.00** GBP RRP | **€100.00** EURO RRP



M's & W's: Black/Black

M's & W's: Black/Azure blue

M's & W's: Granite/Black

GXJ-2R M's: Black (Reflective)

GXJ-2R M's: Navy (Reflective)

## OLYMPIA RAIN PANT

JXP-1

### Additional Features

- PFC-Free Water Repellent Finish
- Zippered Front Fly
- Articulated Knee
- Mesh and Taffeta Lining

### Fabrication

(Shell) 100% Polyester Ripstop, 3.07 oz/yd<sup>2</sup> (USA) / 104gsm (CDN); (Lining) 100% Polyester

### Men's Sizes

XS-5XL

### Decoration Options



### Technology



#### Elastic Waistband

Gives you a secure fit at the waist and maximizes core warmth

#### Fully Sealed Seams

Ensure that no water enters your pant, leaving you dry and comfortable for hours

#### STORMTECH H2XTREME® Waterproof / Breathable Outer Shell

Offers a high level of waterproofing while allowing moisture vapor to exit the garment

#### Zippered Front Pockets

Allows you to conveniently safe-zip your important valuables

#### Lower Leg Opening

Makes it easy to put on or take off during activities and enhances ventilation



M's: Navy

M's: Black



**WATERPROOF LEVEL 2**  
5,000MM



**BREATHABLE LEVEL 2**  
5,000G/M<sup>2</sup>



+20°C TO +5°C  
68°F TO 41°F



**FULLY SEALED SEAMS**

### PRICE

**\$95.00** CAD MSRP | **£60.00** GBP RRP | **€70.00** EURO RRP



## **PACIFIC JACKET**

KXT-2 | KXT-2W

Urban-inspired lightweight performance. The ultra-lightweight Pacifica Jacket features a sleek silhouette, a mesh-lined back vent for enhanced ventilation, articulated elbows to allow for a full range of movement, an attached hood for unexpected rain showers and zippered hand pockets to securely and conveniently store personal items. Articulated action shoulders provide optimal range of motion.



# PACIFICA JACKET

KXT-2 | KXT-2W



**Articulated Action Shoulders (M's)**  
Provide optimal range of motion

**PFC-Free Water Repellent Finish**  
Provides ample water resistance in wet weather

**Full Center Front Zipper with Internal Stormflap**  
For a top to bottom secure fit

**Partial Elasticized Cuffs**  
Blocks cold air from entering sleeve and offers a secure fit

**Adjustable Hood**  
Provides extra next to skin and wind protection

**Gathered Action Shoulders (W's)**  
Provide optimal range of motion

**Mesh & Taffeta Lining**  
For enhanced management and comfort

**Zippered Hand Pockets**  
Securely and conveniently store personal



**WATERPROOF LEVEL 1**  
600MM



**BREATHABLE LEVEL 1**  
1,000G/M<sup>2</sup>



**WINDPROOF**



**+20°C TO +5°C**  
**68°F TO 41°F**

**Additional Features**

- Mesh Lined Back Vent
- Adjustable Hem

**Fabrication**

(Shell) 100% Polyester, 192 oz/yd<sup>2</sup> (USA) / 65gsm (CDN);  
(Lining) 100% Polyester

**Men's Sizes**

S-3XL (Black, Dolphin, Navy S-5XL)

**Women's Sizes**

XS-2XL

**Technology**



**Decoration Options**



**PRICE**

**\$80.00** CAD MSRP | **£57.00** GBP RRP | **€57.00** EURO RRP



M's & W's: Black

M's & W's: Black/  
Classic Blue

M's & W's: Black/  
Bright Red

M's & W's: Dolphin

M's & W's: Navy

M's & W's: Classic Blue

M's & W's: Rust  
**NEW**

## **PACIFICA 1/4 ZIP ANORAK**

KXT-1 | KXT-1W

Lightweight, windproof and water repellent, this vented shell is the ideal light protection for passing showers with a mesh-lined back vent for enhanced ventilation and performance during activities. Easily stowed into its own pocket, this trouble-free accessory is easy to grab on your way out.



## **PACIFICA VEST**

KTV-1 | KTV-1W

Ultra-lightweight, ultra-compactable wind vest for when the elements are working against you. Urban inspired, features include a mesh lined back vent, and an adjustable hem that make the Pacifica Vest a great solution in mild weather. Zippered hand pockets to securely and conveniently store personal items.

## PACIFICA 1/4 ZIP ANORAK

KXT-1 | KXT-1W

### Additional Features

- Articulated Action Shoulders (M's)
- Gathered Action Shoulders (W's)
- Zippered Hand Pockets
- Partial Elasticized Cuffs
- Mesh Lined Back Vent
- Mesh and Taffeta Lining
- Adjustable Hem

### Fabrication

(Shell) 100% Polyester, 1.92 oz/yd<sup>2</sup> (USA) / 65gsm (CDN);  
(Lining) 100% Polyester

### Men's Sizes

S-3XL (Black, Dolphin, Navy S-5XL)

### Women's Sizes

XS-2XL

### Decoration Options



### Technology



**WATERPROOF**  
LEVEL 1  
600MM



**BREATHABLE**  
LEVEL 1  
1,000G/M<sup>2</sup>



**WINDPROOF**



**+20°C TO +5°C**  
**68°F TO 41°F**

**1/4 Zip with Internal Stormflap**  
Adjust to shut out the cold or allow heat to escape



**PFC-Free Water Repellent Finish**  
Provides ample water resistance in wet weather

W's: Classic Blue  
(Available in M's)

M's: Black  
(Available in W's)



M's & W's: Dolphin

M's & W's: Navy

### PRICE

**\$65.00** CAD MSRP | **£49.00** GBP RRP | **€49.00** EURO RRP

## PACIFICA VEST

KTV-1 | KTV-1W

### Additional Features

- Full Center Front Zipper with Internal Stormflap
- Zippered Hand Pockets
- Mesh Lined Back Vent
- Adjustable Hem

### Fabrication

(Shell) 100% Polyester, 1.92 oz/yd<sup>2</sup> (USA) / 65gsm (CDN);  
(Lining) 100% Polyester

### Men's Sizes

S-3XL (Black, Dolphin, Navy S-5XL)

### Women's Sizes

XS-2XL

### Decoration Options



### Technology



**WATERPROOF**  
LEVEL 1  
600MM



**BREATHABLE**  
LEVEL 1  
1,000G/M<sup>2</sup>



**WINDPROOF**



**+20°C TO +5°C**  
**68°F TO 41°F**

**PFC-Free Water Repellent Finish**  
Provides ample water resistance in wet weather



**Mesh & Taffeta Lining**  
For enhanced management and comfort

W's: Dolphin  
(Available in M's)

M's: Classic Blue  
(Available in W's)



M's & W's: Black

M's & W's: Black/  
Classic Blue

M's & W's: Black/  
Bright Red

M's & W's: Navy

### PRICE

**\$65.00** CAD MSRP | **£49.00** GBP RRP | **€49.00** EURO RRP

## OZONE HOODED SHELL

TMX-1 | TMX-1W

Urban-inspired and outdoor-ready. The super lightweight Ozone Hooded Shell features a modern silhouette, mesh panel for ventilation, articulated elbows to allow for a full range of movement, and an attached hood for unexpected rain showers.



## NAUTILUS PERFORMANCE SHELL

KX-1 | KX-1W

Lightweight convertible protection. The stowable hood adds extra protection when showers arrive, while a vented back yoke works like air-conditioning, keeping you cool and dry. With reflective trim on the shoulder for added visibility in low light and availability in a wide range of colors.

## OZONE HOODED SHELL

TMX-1 | TMX-1W

### Additional Features

- PFC-Free Water Repellent Finish
- Packs Into Self-Pocket
- Articulated Action Shoulders

### Fabrication

100% Polyester, 192oz/yd<sup>2</sup> (USA)/65gsm (CDN)

### Men's Sizes

S-3XL (Black S-5XL)

### Women's Sizes

XS-2XL

### Decoration Options



### Technology



WATERPROOF  
LEVEL 1  
600MM



BREATHABLE  
LEVEL 1  
1,000G/M<sup>2</sup>



+20°C TO +5°C  
68°F TO 41°F

### Contoured Hem

Ergonomic design that provides freedom of movement with a fashionably tailored fit

### D/W/R Outer Shell

Provides an all-you-need basic level of water resistance for cool to cold wet weather conditions

### Scuba Hood

For instant wind and weather protection when you need it



W's: Dolphin  
(Available in M's)

M's: Black  
(Available in W's)

### PRICE

\$70.00 CAD MSRP | £45.00 GBP RRP | €50.00 EURO RRP

## NAUTILUS PERFORMANCE SHELL

KX-1 | KX-1W

### Additional Features

- High-Performance Windproof Outer Shell
- Zippered Pocket
- Back Mesh Lined Vent
- Adjustable Cuffs
- Adjustable Hem

### Fabrication

(Shell) 100% Polyester Pongee, 2.65 oz/yd<sup>2</sup> (USA) / 90gsm (CDN); (Lining) 100% Polyester

### Men's Sizes

XS-3XL (Black XS-6XL) (Navy XS-5XL)

### Women's Sizes

XS-2XL (Black, Navy XS-3XL)

### Decoration Options



### Technology



WATERPROOF  
LEVEL 1  
600MM



BREATHABLE  
LEVEL 1  
1,000G/M<sup>2</sup>



WINDPROOF



+20°C TO +5°C  
68°F TO 41°F



Stows away into  
Zip Pocket

### D/W/R Outer Shell

Provides an all-you-need basic level of water resistance for cool to cold wet weather conditions

### Reflective Trim on Shoulders

For added visibility in low light

### Stowable Hood into Collar

Allows you to adjust the fit of the hood for maximum warmth in cool weather



W's: Azure Blue  
(Available in M's)

M's: Bright Red  
(Available in W's)

### PRICE

\$50.00 CAD MSRP | £40.00 GBP RRP | €40.00 EURO RRP



M's & W's: Black

M's & W's: Carbon

M's & W's: Navy

M's: Kiwi

M's & W's: Cool Silver





M'S GREENWICH LIGHTWEIGHT SOFTSHELL KS-3

# Technical Softshells

Our Technical Softshells Outerwear Collection is built with unparalleled attention to detail that ensures your absolute warmth and comfort in thick fog or light rain. The tightly woven face fabrics provide a solid barrier that braces against the elements, while the brushed interior provides ultra-soft comfort for your skin. This brushed interior also promotes a micro-climate for superior moisture management and climate control. You may never want to come out of your shell.



M'S NARVIK SOFTSHELL KBR-1



ORBITER SOFTSHELL KSB-1 | KSB-1W

## GREENWICH LIGHTWEIGHT SOFTSHELL

KS-3 | KS-3W

### Additional Features

- D/W/R Outer Shell
- PFC-Free Water Repellent Finish
- Internal Pocket
- Audio Port

### Fabrication

100% Polyester Interlock bonded with 100% Polyester Birdseye Mesh, 5.90 oz/yd<sup>2</sup> (USA) / 200gsm (CDN)

### Men's Sizes

S-3XL (Black, Dolphin, Navy S-5XL) (Black S-6XL)

### Women's Sizes

XS-3XL

### Decoration Options



### Technology

**H2XTREME**  
WATERPROOF/BREATHABLE  
STORM PROTECTION



WATERPROOF  
LEVEL 3  
10,000MM



BREATHABLE  
LEVEL 3  
3,000G/M<sup>2</sup>



+20°C TO +5°C  
68°F TO 41°F

### STORMTECH H2XTREME® Waterproof / Breathable Outer Shell

Offers a high level of waterproofing while allowing moisture vapor to exit the garment



**Reflective Trim**  
For added visibility in low light conditions

M's: Bright Red  
(Available in W's)

W's: Dolphin  
(Available in M's)

### PRICE

\$90.00 CAD MSRP | £65.00 GBP RRP | €65.00 EURO RRP



M's & W's: Black

M's & W's: Navy

M's & W's: Azure Blue

## CATSKILL ANORAK

KS-4 | KS-4W

### Additional Features

- D/W/R Outer Shell
- Adjustable Hem with Drawcord
- 1/4 Zip with Internal Stormflap
- Zippered Hand Pockets with Brushed Tricot
- Articulated Action Elbows
- Combination Action Shoulders
- Contoured Seaming (W's)

### Fabrication

100% Polyester Interlock bonded with 100% Polyester Birdseye Mesh, 5.90 oz/yd<sup>2</sup> (USA) / 200gsm (CDN)

### Men's Sizes

S-5XL

### Women's Sizes

XS-3XL

### Decoration Options



### Technology

**H2XTREME**  
WATERPROOF/BREATHABLE  
STORM PROTECTION



WATERPROOF  
LEVEL 3  
10,000MM



BREATHABLE  
LEVEL 3  
3,000G/M<sup>2</sup>



+20°C TO +5°C  
68°F TO 41°F

### Partial Elasticized Cuffs

Blocks cold air from entering sleeve and offers a secure fit



**Extra High Adjustable Collar**  
Adjustable weather protection for maximum comfort

### STORMTECH H2XTREME® Waterproof / Breathable Outer Shell

Offers a high level of waterproofing while allowing moisture vapor to exit the garment

M's: Black  
(Available in W's)

W's: Dolphin  
(Available in M's)

### PRICE

\$85.00 CAD MSRP | £65.00 GBP RRP | €65.00 EURO RRP

## KYOTO JACKET

KPX-1 | KPX-1W

The hard-faced waffle-backed fabric used in the Kyoto Jacket traps pockets of warm air on the interior side. It provides an advanced stretch technology that allows for a superior range of motion and enhanced breathability, while also remaining water resistant. This adaptable piece can double as a performance training top or a technical layering shell - ideal for a casual athletic look at work or any hike in the local mountains.



## NARVIK SOFTSHELL

KBR-1 | KBR-1W

Soft-touch weather-resistant warmth. A high-performance mid-layer softshell, featuring water-repellent fabric for elemental weather protection built with environmentally sustainable 42% Recycled Polyester. Zippered pockets lined with brushed tricot, along with a lightweight fleece backing, provide added comfort for your hands and core. Wear on its own or partner with an H2XTREME® waterproof outer layer and a lightweight H2X-DRY® base for the ultimate layered system.

## KYOTO JACKET

KPX-1 | KPX-1W

### Additional Features

- PFC-Free Water Repellent Finish
- Zippered Hand Pockets
- Hard Face Waffle Back Fabrication
- Chest Pocket (M's)
- Sleeve Pocket (W's)
- Internal Media Port
- Internal Storm Flap
- Elasticized Cuffs
- Contoured Fit (W's)

### Fabrication

92% Polyester/ 8% Spandex Fleece, 5.46oz/yd<sup>2</sup> (USA)/ 185gsm (CDN)

### Men's Sizes

S-3XL (Black, Graphite S-5XL)

### Women's Sizes

XS-2XL

### Decoration Options



### Technology



M's & W's: Black

M's & W's: Classic Blue

**Articulated Action Shoulders**  
Provide optimal range of motion

**D/W/R Outer Shell**  
Provides an all-you-need basic level of water resistance for cool to cold wet weather conditions



M's: Garden Green  
(Available in W's)

W's: Graphite  
(Available in M's)

### PRICE

**\$90.00** CAD MSRP | **£60.00** GBP RRP | **€65.00** EURO RRP

## NARVIK SOFTSHELL

KBR-1 | KBR-1W

### Additional Features

- Zippered Brushed Tricot Pockets
- Internal Placket and Chin Saver
- Adjustable Hem
- Elasticized Cuffs

### Fabrication

92% Polyester (42% Recycled Polyester) / 8% Spandex bonded with 100% Recycled Polyester Polar Fleece, 8.11 oz/yd<sup>2</sup> (USA) / 275gsm (CDN)

### Men's Sizes

S-3XL (Black S-5XL)

### Women's Sizes

XS-2XL (Black S-3XL)

### Decoration Options



### Technology



**WATERPROOF**  
LEVEL 1  
600MM



**BREATHABLE**  
LEVEL 1  
1,000G/M<sup>2</sup>



**+20°C TO +5°C**  
**68°F TO 41°F**



M's & W's: Black

**PFC-Free Water Repellent Finish**  
Provides ample water resistance in wet weather

**Pure Earth by STORMTECH™**  
Made from Recycled Polyester for a reduced environmental footprint  
**42% RECYCLED POLYESTER**



M's: Dolphin  
(Available in W's)

W's: Navy  
(Available in M's)

### PRICE

**\$100.00** CAD MSRP | **£85.00** GBP RRP | **€85.00** EURO RRP

## ORBITER SOFTSHELL

KSB-1 | KSB-1W | KSB-1Y | KSB-1R

Soft-touch weather-resistant warmth. A high-performance mid-layer softshell, featuring water-repellent fabric for elemental weather protection. Zippered pockets lined with brushed tricot, along with a lightweight fleece backing provides added comfort for your hands and core. Partner with an H2XTREME® waterproof outer layer and a lightweight H2X-DRY® base for the ultimate layered system.

- Additional Features**
- Zippered Brushed Tricot Pockets
  - Reverse Taped Center Front Zipper
  - Chin Saver

**Fabrication** 92% Polyester/8% Spandex bonded with 100% Polyester Polar Fleece, 8.11 oz/yd<sup>2</sup> (USA) / 275gsm (CDN)

**Men's Sizes** S-3XL (Black/Azure Blue, Black/Bright Red S-5XL) (Black/Carbon S-6XL)

**Women's Sizes** XS-2XL (Black/Carbon, Black/Azure Blue, Black/Bright Red XS-3XL)

**Youth's Sizes** XS-XL

**Decoration Options**

**E** **HT** **LP**

**Technology**

**PFC-Free DWR** WATER REPELLENT FINISH

**WATERPROOF LEVEL 1** 600MM

**BREATHABLE LEVEL 1** 1,000G/M<sup>2</sup>

**+20°C TO +5°C** **68°F TO 41°F**

**D/W/R Outer Shell**  
Provides an all-you-need basic level of water resistance for cool to cold wet weather conditions



W/S: Azure Blue/Black

M's: Navy/Carbon (Available in W's & Y's)

**PRICE (KSB-1)**  
(M'S & W'S) **\$80.00** CAD MSRP | **£65.00** GBP RRP | **€65.00** EURO RRP  
(YOUTH) **\$70.00** CAD MSRP | **£55.00** GBP RRP | **€60.00** EURO RRP

**PRICE (KSB-1R)**  
**\$120.00** CAD MSRP | **£90.00** GBP RRP | **€90.00** EURO RRP



M's, W's & Y's: Black/Carbon

M's, W's & Y's: Black/Azure Blue

M's, W's & Y's: Black/Bright Red

W's: Bright Red/Black

W's: Black/Kiwi

KSB-1R M's: Black (Reflective)

KSB-1R M's: Navy (Reflective)

## ORBITER SOFTSHELL VEST

KSV-1 | KSV-1W

Soft-touch weather-resistant softshell full-zip vest. A high-performance mid-layer, featuring water-repellent fabric for elemental weather protection. This vest has a lightweight fleece backing to add core warmth and brushed tricot-lined pockets to provide added comfort for your hands.

- Additional Features**
- PFC-Free Water Repellent Finish
  - Zippered Hand Pockets with Brushed Tricot
  - Adjustable Hem

**Fabrication** 92% Polyester/8% Spandex bonded with 100% Polyester Polar Fleece, 8.11 oz/yd<sup>2</sup> (USA) / 275gsm (CDN)

**Men's Sizes** S-5XL

**Women's Sizes** XS-2XL

**Decoration Options**

**E** **HT** **LP**

**Technology**

**PFC-Free DWR** WATER REPELLENT FINISH

**WATERPROOF LEVEL 1** 600MM

**BREATHABLE LEVEL 1** 1,000G/M<sup>2</sup>

**+20°C TO +5°C** **68°F TO 41°F**

**D/W/R Outer Shell**  
Provides an all-you-need basic level of water resistance for cool to cold wet weather conditions



W's: Navy/Carbon (Available in M's)

M's: Black/Dolphin (Available in W's)





M'S BOULDER THERMAL SHELL AFH-1

# Lightweight Thermal Shells

Plan your escape for a trek up the trail with STORMTECH's best-in-class Lightweight Thermal Shells Collection. From high-end technical parkas to fashion-forward thermal jackets and quilted puffer jackets, a coming together of genius design and functionality keeps you ultra warm and dry. Features include high-loft feather-free thermal insulation, H2XTREME® waterproof/breathable technology, insulated hood with face shield and deep dive handwarmer pockets for added comfort in the most extreme conditions.



W'S OAKLAND THERMAL JACKET BXM-1W



M'S MONTSERRAT THERMAL VEST PDV-1

## MONTSERRAT THERMAL VEST

PDV-1 | PDV-1W

Lightweight thermal efficiency. The Montserrat Vest helps you warm up in damp and cold environments with a lightweight quilted body and stretch side panels. A PFC-Free durable water-repellent finish on the main body helps repel water in damp conditions.

Chin saver and adjustable hem with drawcord lets you adjust for maximum comfort. The Montserrat Thermal Vest is built with both regular and recycled polyester fabric inputs for a reduced environmental footprint.



## MONTSERRAT THERMAL JACKET

PDX-1 | PDX-1W

Lightweight thermal efficiency. The Montserrat Jacket lets you warm up in damp and cold environments with a lightweight quilted body and stretch side panels. A PFC-Free durable water-repellent finish on the main body helps repel water in damp conditions.

Chin saver and adjustable hem with drawcord lets you adjust for maximum comfort. The Montserrat Thermal Jacket is built with both regular and recycled polyester fabric inputs for a reduced environmental footprint.

# MONTERRAT THERMAL JACKET

PDX-1 | PDX-1W

## Additional Features

- STORMTECH Thermolex™ High Loft Synthetic Down
- High-Performance Windproof Outer Shell
- Combination of Broken Fiberfill and Polyfill
- Contrast Single Layer Stretch Side Panels
- Adjustable Hem with Drawcord
- Elasticized Cuffs
- Zippered Hand Pockets with Brushed Tricot
- Internal Mesh Stash Pockets
- Internal Full-Length Stormflap with Chin Saver
- Decoration Access

## Fabrication

(Shell) 55% Recycled Polyester/ 45% Polyester, 1.15 oz/yd<sup>2</sup> (USA) / 39gsm (CDN);  
 (Shell-Secondary): 92% Recycled Polyester/ 8% Spandex bonded with 100% Recycled Polyester  
 Polar Fleece, 8.11 oz/yd<sup>2</sup> (USA) / 275gsm (CDN);  
 (Lining) 55% Recycled Polyester/ 45% Polyester

## Men's Sizes

S-3XL (Black/Granite, Granite/Black S-5XL)

## Women's Sizes

XS-2XL (Black/Granite XS-3XL)

## Decoration Options



## Technology



**thermolex™**  
HIGH LOFT SYNTHETIC DOWN



**WATERPROOF**  
LEVEL 1  
600MM



**BREATHABLE**  
LEVEL 1  
1,000G/M²



**WINDPROOF**



**+5°C TO -10°C**  
**41°F TO 14°F**

PFC-Free Durable Water Repellent Finish  
Environmentally-friendly finish enhances waterproofing performance



Pure Earth by STORMTECH™  
Made from Recycled Polyester for a reduced environmental footprint  
**55% RECYCLED POLYESTER**



M'S: Black/Graphite (Available in WS)

W'S: Indigo/Midnight (Available in M'S)



M's & W's: Granite/Black



M's & W's: Spruce/Mallard



M's & W's: Rust **NEW**

## PRICE

**\$150.00** CAD MSRP | **£110.00** GBP RRP | **€115.00** EURO RRP

# MONTERRAT THERMAL VEST

PDV-1 | PDV-1W

## Additional Features

- STORMTECH Thermolex™ High Loft Synthetic Down
- High-Performance Windproof Outer Shell
- Combination of Broken Fiberfill and Polyfill
- Contrast Single Layer Stretch Side Panels
- Adjustable Hem
- Partial Elasticized Armhole Trim
- Zippered Hand Pockets with Brushed Tricot
- Internal Mesh Stash Pockets
- Decoration Access

## Fabrication

(Shell) 55% Recycled Polyester/ 45% Polyester, 1.15 oz/yd<sup>2</sup> (USA) / 39gsm (CDN);  
 (Shell-Secondary): 92% Recycled Polyester/ 8% Spandex bonded with 100% Recycled Polyester  
 Polar Fleece, 8.11 oz/yd<sup>2</sup> (USA) / 275gsm (CDN);  
 (Lining) 55% Recycled Polyester/ 45% Polyester

## Men's Sizes

S-3XL (Black/Granite, Granite/Black S-5XL)

## Women's Sizes

XS-2XL (Black/Granite XS-3XL)

## Decoration Options



## Technology



**thermolex™**  
HIGH LOFT SYNTHETIC DOWN



**WATERPROOF**  
LEVEL 1  
600MM



**BREATHABLE**  
LEVEL 1  
1,000G/M²



**WINDPROOF**



**+5°C TO -10°C**  
**41°F TO 14°F**

PFC-Free Durable Water Repellent Finish  
Environmentally-friendly finish enhances waterproofing performance



Pure Earth by STORMTECH™  
Made from Recycled Polyester for a reduced environmental footprint  
**55% RECYCLED POLYESTER**



M'S: Indigo/Midnight (Available in WS)

W'S: Spruce/Mallard (Available in M'S)



M's & W's: Black/Granite



M's & W's: Granite/Black



M's & W's: Rust **NEW**

## PRICE

**\$120.00** CAD MSRP | **£90.00** GBP RRP | **€95.00** EURO RRP



## **BOULDER THERMAL SHELL**

AFH-1 | AFH-1W

The Boulder Thermal Shell isolates you from the wet and cold, with its warm, ultra-lightweight thermal insulation, full-length stormflap, and PFC-Free water repellent finish on the main body, it comes standard for heat-seekers. The chin saver and adjustable hem with drawcord complete this fashionable functional thermal shell.

# BOULDER THERMAL SHELL

AFH-1 | AFH-1W

**Internal Full-Length Stormflap**  
Guards against cold, rain and wind entering through the zipper

**Feather Free Thermal Shell**  
High loft synthetic insulation, designed to be lightweight and compactible

**Zippered Hand Warmer Pockets**  
For stowing personal items and keeping hands warm

**Adjustable Hem with Drawcord**  
Provides a comfortable fit and maximizes core temperature control

**Chin Saver**  
Provides extra next to skin and wind protection

**Articulated Action Shoulders**  
Provide optimal range of motion

**D/W/R Outer Shell**  
Provides an all-you-need basic level of water resistance for cool to cold wet weather conditions



**WATERPROOF**  
LEVEL 1  
600MM



**BREATHABLE**  
LEVEL 1  
1,000G/M<sup>2</sup>



**WINDPROOF**



+5°C TO -10°C  
41°F TO 14°F

**Additional Features**

- PFC-Free Water Repellent Finish
- High-Performance Windproof Outer Shell
- Decoration Access

**Fabrication**

(Shell) 100% Nylon, 1.18 oz/yd<sup>2</sup> (USA) / 40gsm (CDN);  
(Shell-Secondary) 97% Polyester/ 3% Spandex Fleece,  
6.87 oz/yd<sup>2</sup> (USA) / 233gsm (CDN); (Lining) 100% Nylon

**Men's Sizes**

S-6XL

**Women's Sizes**

XS-3XL

**Technology**



**THERMAL SHELL**  
TECHNOLOGY

**Decoration Options**



**PRICE**

**\$110.00** CAD MSRP | **£85.00** GBP RRP | **€90.00** EURO RRP



M's & W's: Black



M's & W's: Indigo

# OAKLAND THERMAL JACKET

BXM-1 | BXM-1W

Cool-weather casual. The Oakland Thermal Shell features low-profile thermal fill panels, an adjustable waist with snap closure for Women's, and a PFC-Free water repellent finish designed to keep you warm and dry. Both Men's and Women's styles feature classic flat rib curved collars with rib knit cuffs and hem on Men's.

**Flat Knit Rib Curved Collar**  
Well-defined and classic bomber style neckline

**Diamond Quilted Polyfill (M's)**  
Diamond construction designed to secure polyfill in place while staying on trend

**Zippered Hand Pockets**  
Perform a dual task of warming hands and stowing personal items

**Rib Knit Cuff and Hem (M's)**  
Rib knit construction provides enhanced durability and comfort

**Feather Free Thermal Shell**  
High loft synthetic insulation, designed to be lightweight and compactible

**Internal Chest Pocket**  
Allows for the secure and practical storage of smaller personal items

**Adjustable Waist with Snap Closure (W's)**  
Seamlessly and comfortably adjusts from a loose to more contoured fit

**Dropped Back (W's)**  
Provides additional warmth and protection

**Adjustable Snap Cuffs (W's)**  
Easily adjusts to provide a more secure fit



**Additional Features**

- Set-in Sleeves
- Adjustable Snap Cuffs (W's)
- Bust Dart Shaping (W's)

**Fabrication**

100% Polyester, 2.51 oz/yd<sup>2</sup> (USA) / 85gsm (CDN)

**Men's Sizes**

S-5XL

**Women's Sizes**

XS-3XL

**Decoration Options**



**Technology**



**THERMAL SHELL TECHNOLOGY**

**PRICE**

**\$120.00** CAD MSRP | **£100.00** GBP RRP | **€100.00** EURO RRP



M's: Black



M's: Dolphin



W's: Black



W's: Dolphin



**PRODUCT CODE INDEX (SORTED ALPHABETICALLY)**

CODE	PRODUCT NAME	PAGE #	CODE	PRODUCT NAME	PAGE #
AFH-1	M's Boulder Thermal Shell.....	95	PSX-2W	W's Ferrera S/S Polo.....	13
AFH-1W	W's Boulder Thermal Shell.....	95	PSX-3M	M's Oasis S/S Polo.....	14
BXM-1	M's Oakland Thermal Jacket.....	96	PSX-3W	W's Oasis S/S Polo.....	14
BXM-1W	W's Oakland Thermal Jacket.....	96	PSX-4M	M's Settebello S/S Polo.....	15
CFH-3	M's Dockyard Performance Hoody.....	57	PSX-4W	W's Settebello S/S Polo.....	15
CFH-3W	W's Dockyard Performance Hoody.....	57	PTS-1	M's Treeline Performance S/S Polo.....	9
CFW-1	M's Yukon Crew Pullover.....	51	PTS-1W	W's Treeline Performance S/S Polo.....	9
CFW-1W	W's Yukon Crew Pullover.....	51	QRT-1	M's Azores Quick Dry Shirt.....	39
CFZ-6	M's Dockyard Performance Full Zip Hoody.....	57	QRT-1W	W's Azores Quick Dry Shirt.....	39
CFZ-6W	W's Dockyard Performance Full Zip Hoody.....	57	QRT-2	M's Azores Quick Dry L/S Shirt.....	NEW 39
CNX-1	M's Dolomite Fleece Hoody.....	55	QRT-2W	W's Azores Quick Dry L/S Shirt.....	NEW 39
CNX-1W	W's Dolomite Fleece Hoody.....	55	QT-1	M's Augusta 1/4 Zip Long Sleeve.....	65
CPF-1	M's Montebello Performance S/S Tee.....	23	QT-1W	W's Augusta 1/4 Zip Long Sleeve.....	65
CPF-1W	M's Montebello Performance S/S Tee.....	23	RX-2	M's Vertex Stormshell.....	73
CPF-2	M's Montebello Performance L/S Tee.....	23	RX-2W	W's Vertex Stormshell.....	73
CPF-2W	W's Montebello Performance L/S Tee.....	23	SBR-1	M's Molokai S/S Shirt.....	41
CPF-3	M's Montebello Pullover Hoody.....	NEW 45	SBR-1W	W's Molokai S/S Shirt.....	41
CPF-3W	W's Montebello Pullover Hoody.....	NEW 45	SBR-2	M's Skeena S/S Shirt.....	41
CPM-1	M's Equinox S/S Tee.....	NEW COLORS 25	SBR-2W	W's Skeena S/S Shirt.....	41
CPM-1W	W's Equinox S/S Tee.....	NEW COLORS 25	SFZ-3	M's Halifax Hoody.....	56
CPM-2	M's Equinox L/S Tee.....	25	SFZ-3W	W's Halifax Hoody.....	56
CPM-2W	W's Equinox L/S Tee.....	25	SPL-1	M's Mistral Heathered Polo.....	17
CTP-2	M's Nantucket Stretch Pique Polo.....	17	SPL-1W	W's Mistral Heathered Polo.....	17
CTP-2W	W's Nantucket Stretch Pique Polo.....	17	SSR-3	M's Stratus Lightweight Shell.....	77
DXP-2	M's Sienna S/S Polo.....	5	SSR-3W	W's Stratus Lightweight Shell.....	77
DXP-2W	W's Sienna S/S Polo.....	5	SSR-5	M's Scirocco Lightweight Shell.....	NEW COLORS 77
DXP-3	M's Galapagos S/S Polo.....	4	SSR-5W	W's Scirocco Lightweight Shell.....	NEW COLORS 77
DXP-3W	W's Galapagos S/S Polo.....	4	STW-1	M's Torrente S/S Polo.....	7
EQX-1	M's Andorra Jacket.....	60	STW-1W	W's Torrente S/S Polo.....	7
EQX-1W	W's Andorra Jacket.....	60	SX-5	M's Montauk Fleece Jacket.....	NEW COLORS 61
GXJ-2	M's Olympia Shell.....	79	SX-5W	W's Montauk Fleece Jacket.....	NEW COLORS 61
GXJ-2R	M's Olympia Reflective Shell.....	79	TFW-1	M's Pulse Fleece Pullover.....	69
GXJ-2W	W's Olympia Shell.....	79	TFW-1W	W's Pulse Fleece Pullover.....	69
HTZ-1	M's Base Thermal 1/4 Zip.....	69	TFX-1	M's Camino Performance S/S Polo.....	9
HTZ-1W	W's Base Thermal 1/4 Zip.....	69	TFX-1W	W's Camino Performance S/S Polo.....	9
HTZ-2	M's Treeline Performance 1/4 Zip Pullover.....	NEW COLORS 63	TFX-2	M's Tundra Performance S/S Tee.....	35
HTZ-2W	W's Treeline Performance 1/4 Zip Pullover.....	NEW COLORS 63	TFX-2W	W's Tundra Performance S/S Tee.....	35
HTZ-3	M's Treeline Performance Jacket.....	NEW 63	TG-1	M's Torcello Crew Neck Tee.....	37
HTZ-3W	W's Treeline Performance Jacket.....	NEW 63	TG-1W	W's Torcello Crew Neck Tee.....	37
HXR-1	M's Milano 1/4 Zip Pullover.....	NEW COLORS 67	TGL-1	M's Torcello L/S Tee.....	37
HXR-1W	W's Milano 1/4 Zip Pullover.....	NEW COLORS 67	TGL-1W	W's Torcello L/S Tee.....	37
HXR-2	M's Milano Crew Neck L/S.....	NEW 67	TLX-2M	M's Volante H2X-DRY® L/S Tee.....	NEW 27
HXR-2W	W's Milano Crew Neck L/S.....	NEW 67	TLX-2W	W's Volante H2X-DRY® L/S Tee.....	NEW 27
JXP-1	M's Olympia Rain Pant.....	79	TMX-1	M's Ozone Hooded Shell.....	85
KBR-1	M's Narvik Softshell.....	89	TMX-1W	W's Ozone Hooded Shell.....	85
KBR-1W	W's Narvik Softshell.....	89	TMX-2	M's Mistral Fleece Jacket.....	60
KPX-1	M's Kyoto Jacket.....	89	TMX-2W	W's Mistral Fleece Jacket.....	60
KPX-1W	W's Kyoto Jacket.....	89	TSX-3M	M's Oasis S/S Tee.....	NEW 31
KS-3	M's Greenwich Lightweight Softshell.....	87	TSX-3W	W's Oasis S/S Tee.....	NEW 31
KS-3W	W's Greenwich Lightweight Softshell.....	87	TSX-4M	M's Settebello S/S Tee.....	NEW 33
KS-4	M's Catskill Anorak.....	87	TSX-4W	W's Settebello S/S Tee.....	NEW 33
KS-4W	W's Catskill Anorak.....	87	TSX-5M	M's Volante H2X-DRY® S/S Tee.....	NEW 27
KSB-1	M's Orbiter Softshell.....	90	TSX-5W	W's Volante H2X-DRY® S/S Tee.....	NEW 27
KSB-1R	M's Orbiter Reflective Softshell.....	90	TWX-1	M's Monashee Fleece Crew Neck.....	51
KSB-1W	W's Orbiter Softshell.....	90	TWX-1W	W's Monashee Fleece Crew Neck.....	NEW 51
KSB-1Y	Y's Orbiter Softshell.....	90	TWX-3	M's Monashee Pullover Hoody.....	53
KSV-1	M's Orbiter Softshell Vest.....	90	TWX-3W	W's Monashee Pullover Hoody.....	NEW 53
KSV-1W	W's Orbiter Softshell Vest.....	90	TWX-4	M's Monashee Henley.....	49
KTV-1	M's Pacifica Vest.....	83	TWX-4W	W's Monashee Henley.....	NEW 49
KTV-1W	W's Pacifica Vest.....	83	TWX-5	M's Monashee 1/4 Zip Pullover.....	49
KX-1	M's Nautilus Performance Shell.....	85	TWX-5W	W's Monashee Cowl Neck Pullover.....	49
KX-1W	W's Nautilus Performance Shell.....	85	TWX-6	Monashee Fleece Shacket.....	NEW 50
KXP-1	M's Montebello Thermal 1/4 Zip Pullover.....	48	VQX-1	M's Dockyard 1/4 Zip Pullover.....	65
KXP-1W	W's Montebello Thermal 1/4 Zip Pullover.....	48	VQX-1W	W's Dockyard 1/4 Zip Pullover.....	65
KXT-1	M's Pacifica 1/4 Zip Anorak.....	83	VRX-1	M's Dockyard Performance S/S Tee.....	35
KXT-1W	W's Pacifica 1/4 Zip Anorak.....	83	VRX-1W	W's Dockyard Performance S/S Tee.....	35
KXT-2	M's Pacifica Jacket.....	NEW COLOR 81	VX-5	M's Montauk Fleece Vest.....	NEW 61
KXT-2W	W's Pacifica Jacket.....	NEW COLOR 81	VX-5W	W's Montauk Fleece Vest.....	NEW 61
PDV-1	M's Montserrat Thermal Vest.....	NEW COLORS 93	WK-1	M's Ashburn Crew Neck.....	29
PDV-1W	W's Montserrat Thermal Vest.....	NEW COLORS 93	WK-1W	W's Ashburn Crew Neck.....	29
PDX-1	M's Montserrat Thermal Jacket.....	NEW COLORS 93	WK-2	M's Ashburn Henley.....	29
PDX-1W	W's Montserrat Thermal Jacket.....	NEW COLORS 93	WK-2W	W's Ashburn Henley.....	29
PG-1	M's Eclipse H2X-DRY® Pique Polo.....	NEW COLORS 19	WK-3	M's Ashburn Pullover Hoody.....	NEW 47
PG-1W	W's Eclipse H2X-DRY® Pique Polo.....	NEW COLORS 19	WK-3W	W's Ashburn Pullover Hoody.....	NEW 47
PRX-1	M's Sirocco Sports Polo.....	11	XJK-1M	M's Artimus Technical Shell.....	NEW 75
PRX-1W	W's Sirocco Sports Polo.....	11	XJK-1W	W's Artimus Technical Shell.....	NEW 75
PSX-2M	M's Ferrera S/S Polo.....	13			



**STORMTECH®**

nurtured by nature

[WWW.STORMTECHPERFORMANCE.COM](http://WWW.STORMTECHPERFORMANCE.COM)

[@stormtech1977](https://www.instagram.com/stormtech1977) [@stormtechcorporate](https://www.facebook.com/stormtechcorporate)

