



Zoho
Lens

Augmented Reality Remote Assistance Software



What does Zoho Lens do?

Zoho Lens enables experts to visually guide and collaborate with customers and field technicians to solve issues remotely in an AR-rich environment.





Invite experts for real-time collaboration

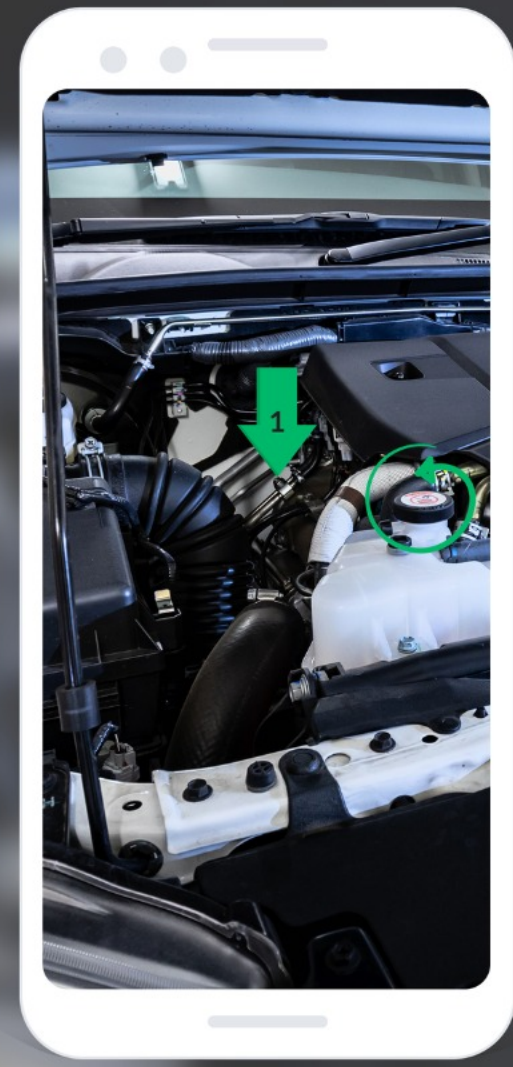




What would you do if your car broke down in the middle of nowhere?

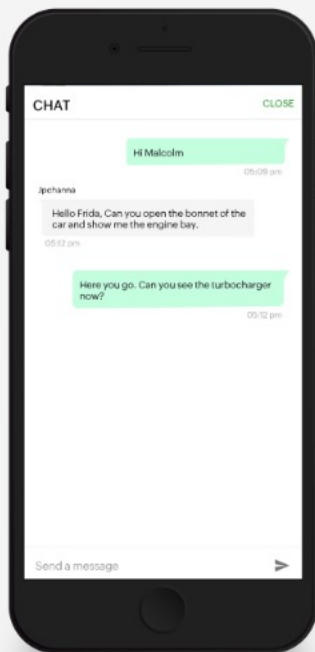


**Use a
smartphone or a
smart glass
camera to show
the issue**

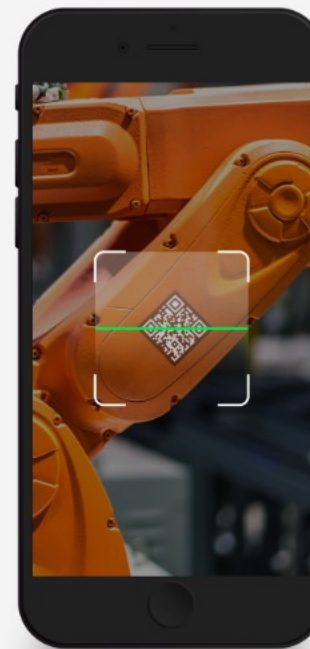




Highlighting on 3D Objects



VoIP and Text Chat



Scan Barcode/QR



Areas of application

Field Service

Maintenance and Repair

Customer Service

Manufacturing

Automotive

Construction

Insurance

Retail





Why use Zoho Lens?

- ① Offers a modern and innovative way of remotely solving problems
- ① Decrease the average issue-resolution time
- ① Improves customer satisfaction and boosts productivity
- ① Reduced travel and training cost



Here's what we offer to make your work easier!



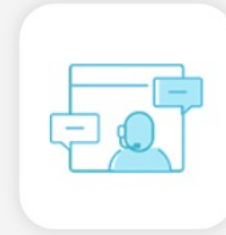
3D AR Annotations



Session Recording



Freeze Camera Stream



VoIP and Text Chat



Scan (QR/Barcode)



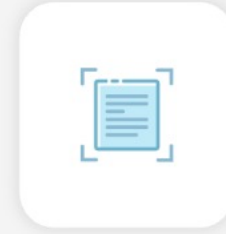
Auditing & Analytics



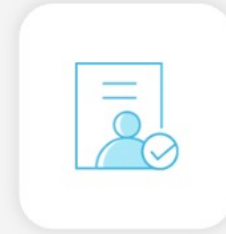
**Multi-participant
Session**



Rebranding



Live Text (OCR)



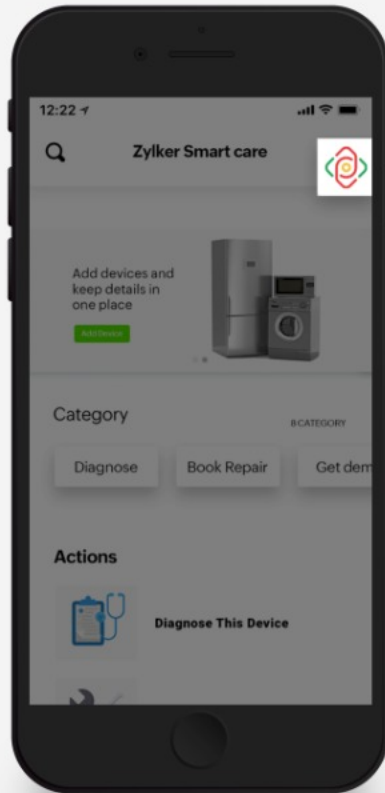
Security

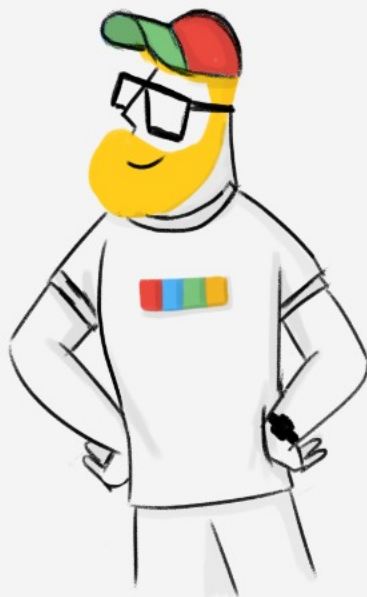


Integrations



Mobile SDK





Thank You!