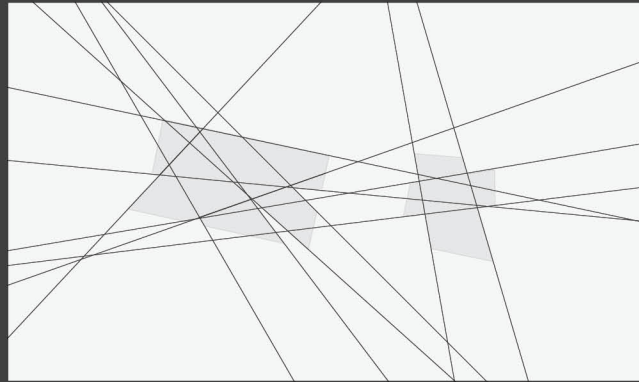


CROSSROADS OF CULTURE



Cayce Civics and Arts Center

Cayce, SC

ARCH 2520 | Prof. JD Gutermuth | Spring 2023

The Cayce Civics and Arts Center project was an experimentation with site analysis and connecting distinct features on the site to the architecture. Through analyzing multiple landmarks

and through reference to the rail switch yard nearby. Lines were drawn connecting the site to the architecture thus creating a new crossroads. Just like the rail switch yard, the Cayce Civics and Arts Center

is a crossroads but unlike the switch yard this architecture is a crossroads of culture, facilitating new growth and congregation in the small town of Cayce, South Carolina.

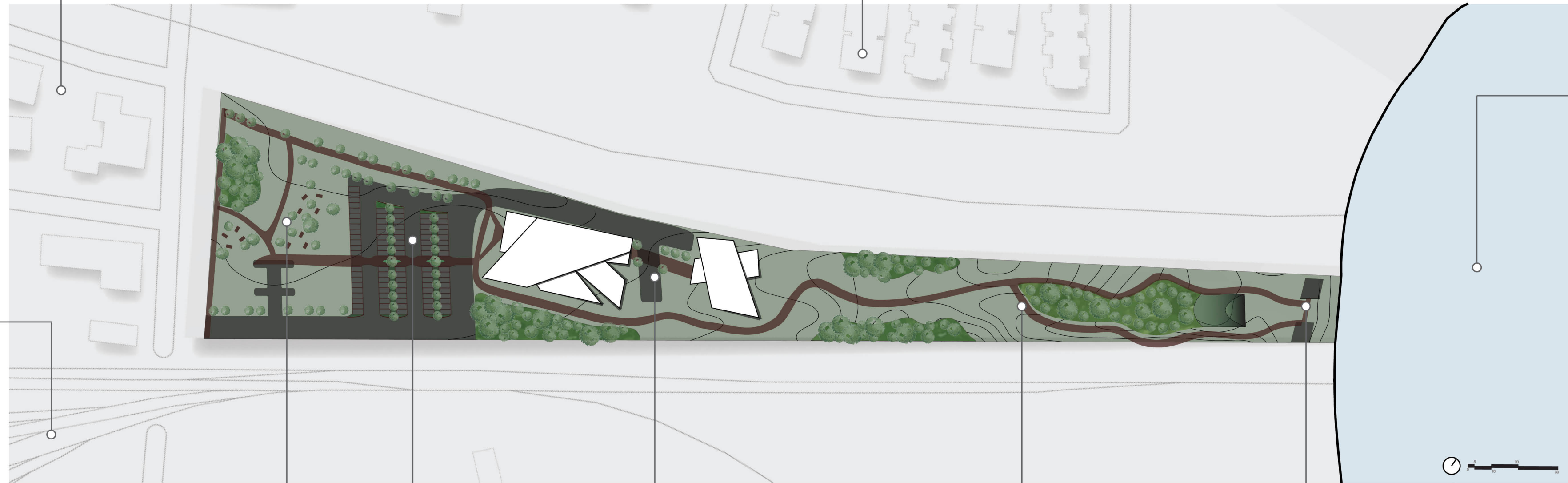


Cayce Arts District

Surrounding Brick Architecture

Congaree River

Rail Switchyard



Front Park

Parking

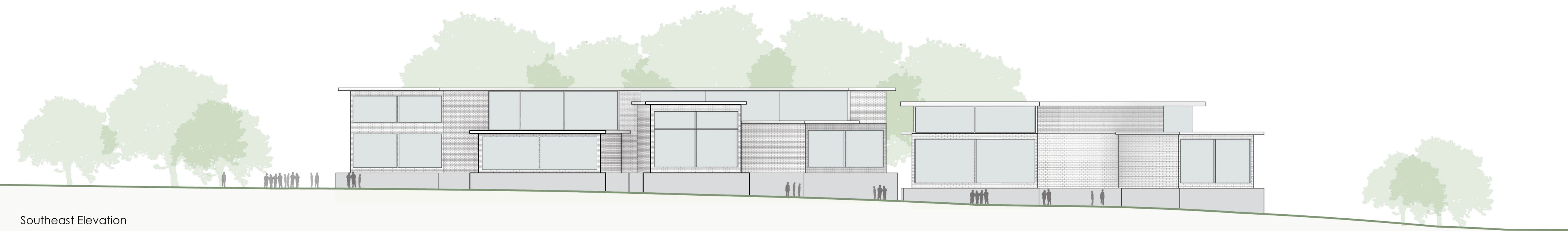
Civics and Arts Center

Rear Park

Ampitheater

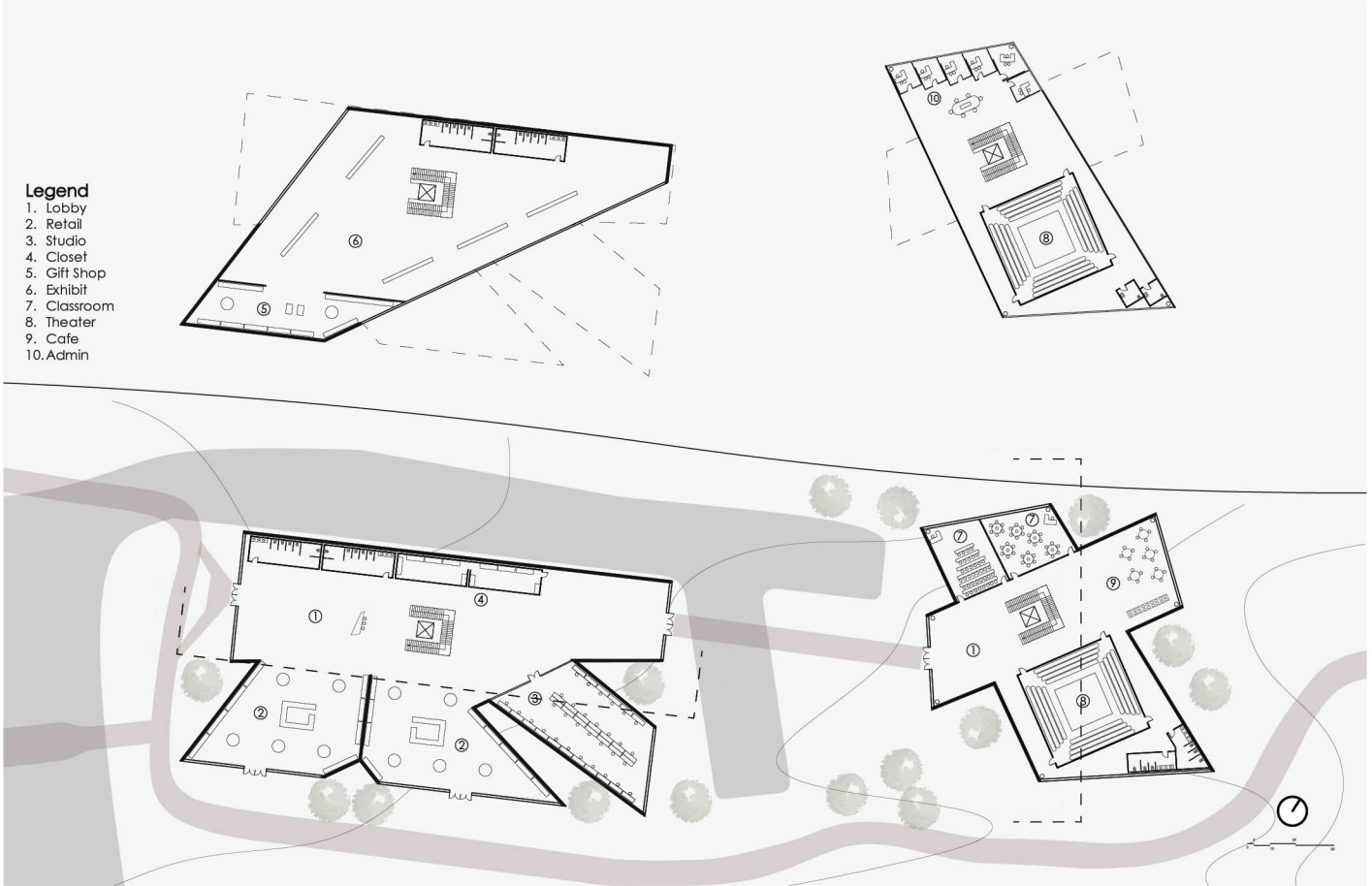


Multiple elements of the Cayce Civics and Arts center are drawn from the surrounding context of Cayce, South Carolina. The brickwork on the facade references the majority brick architecture of the surrounding area, the height of the building also being a reference to the two story homes and businesses of the town.

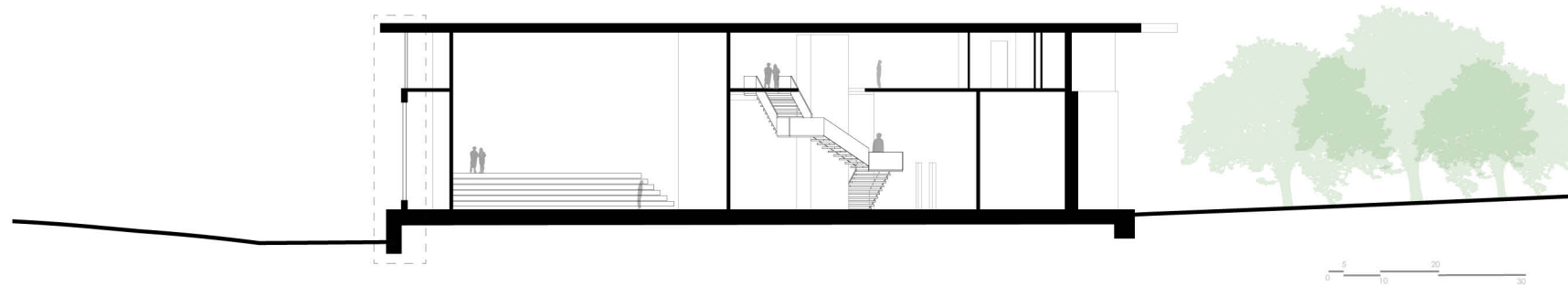
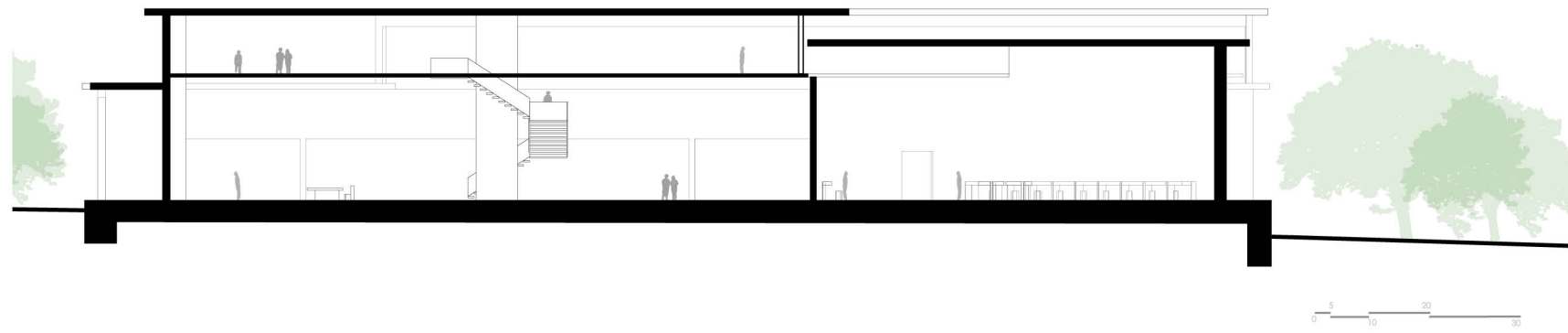


Southeast Elevation



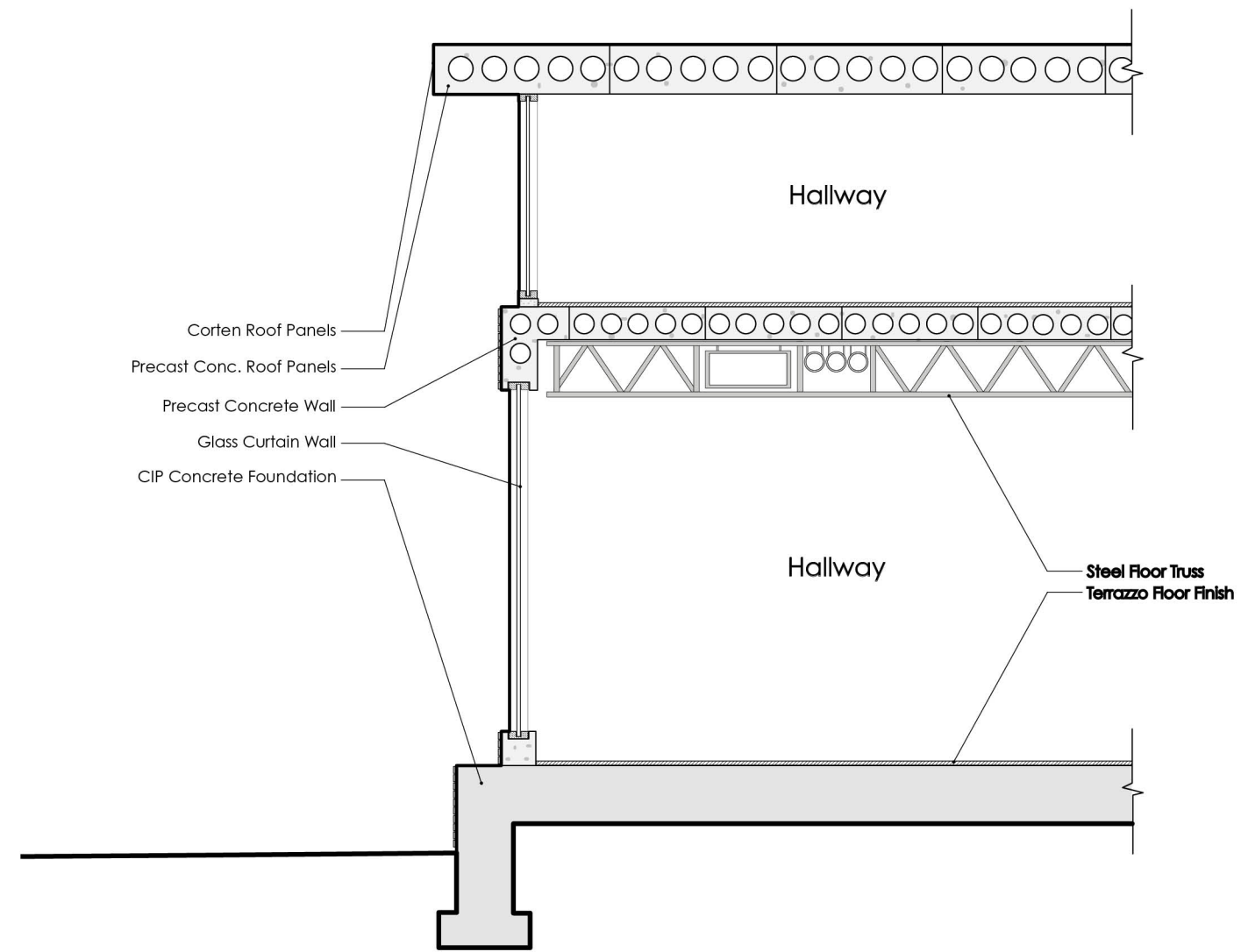
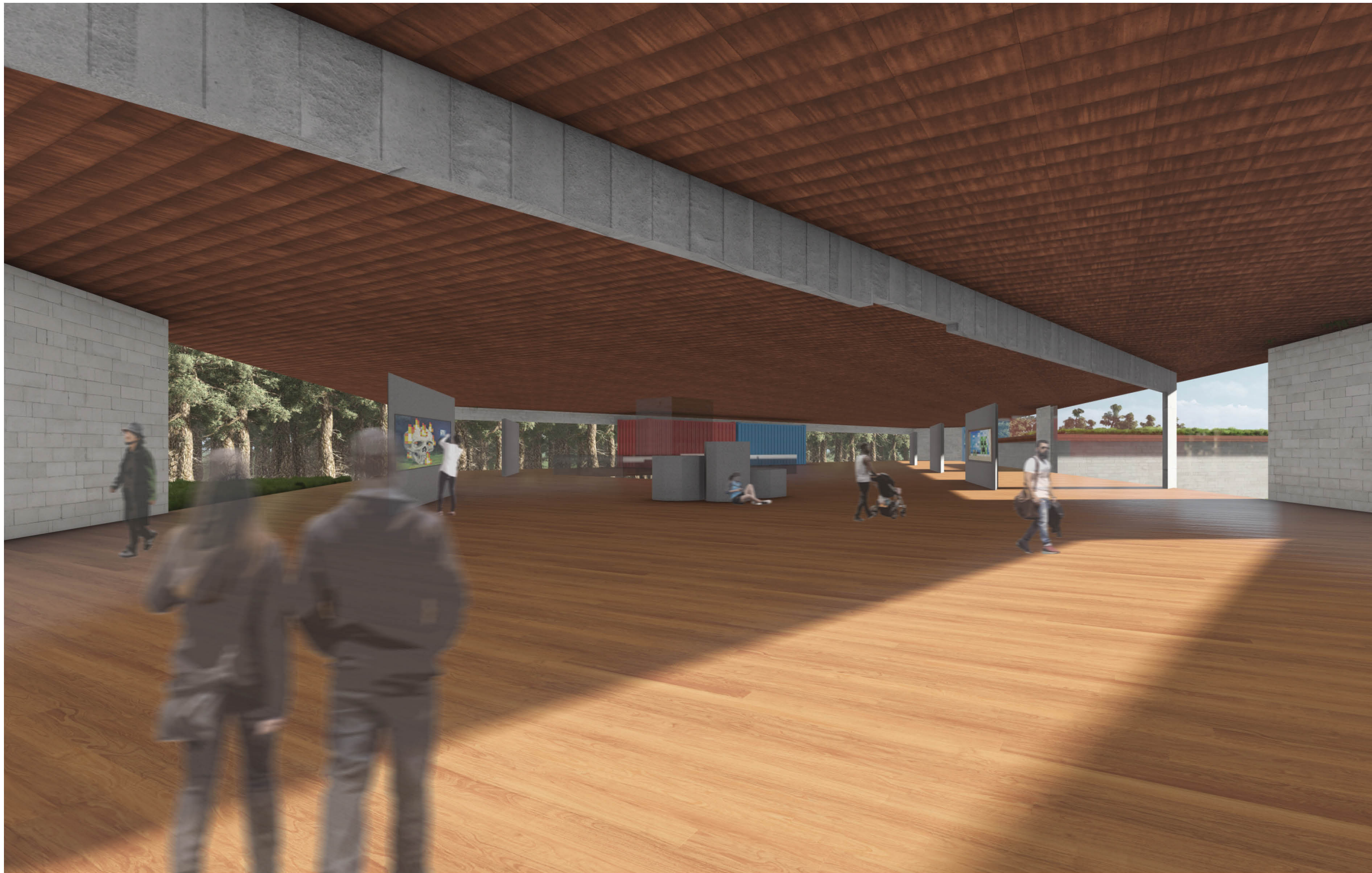


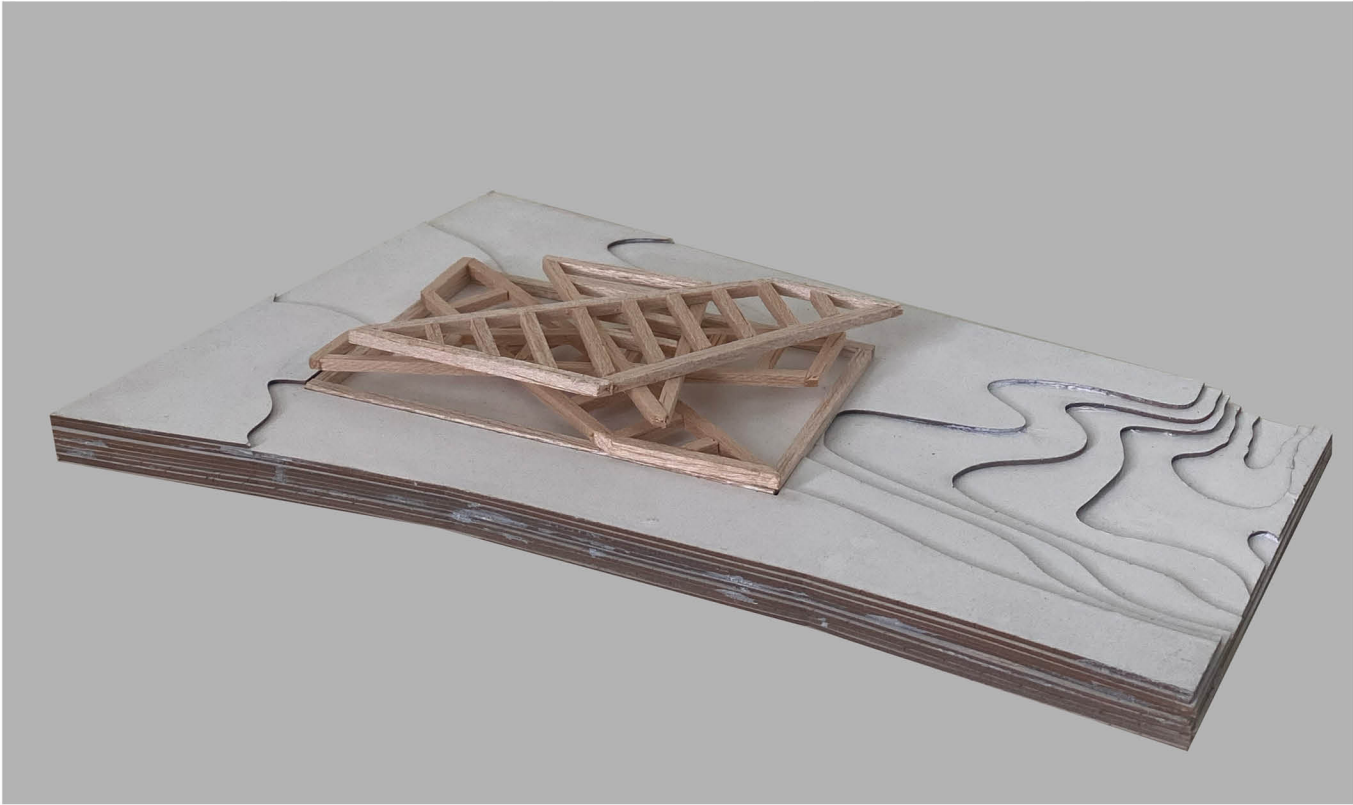
The civics center in plan looks the switchyard southwest of the site in order to resemble the many paths crossing inside the building whether that be culture or art.



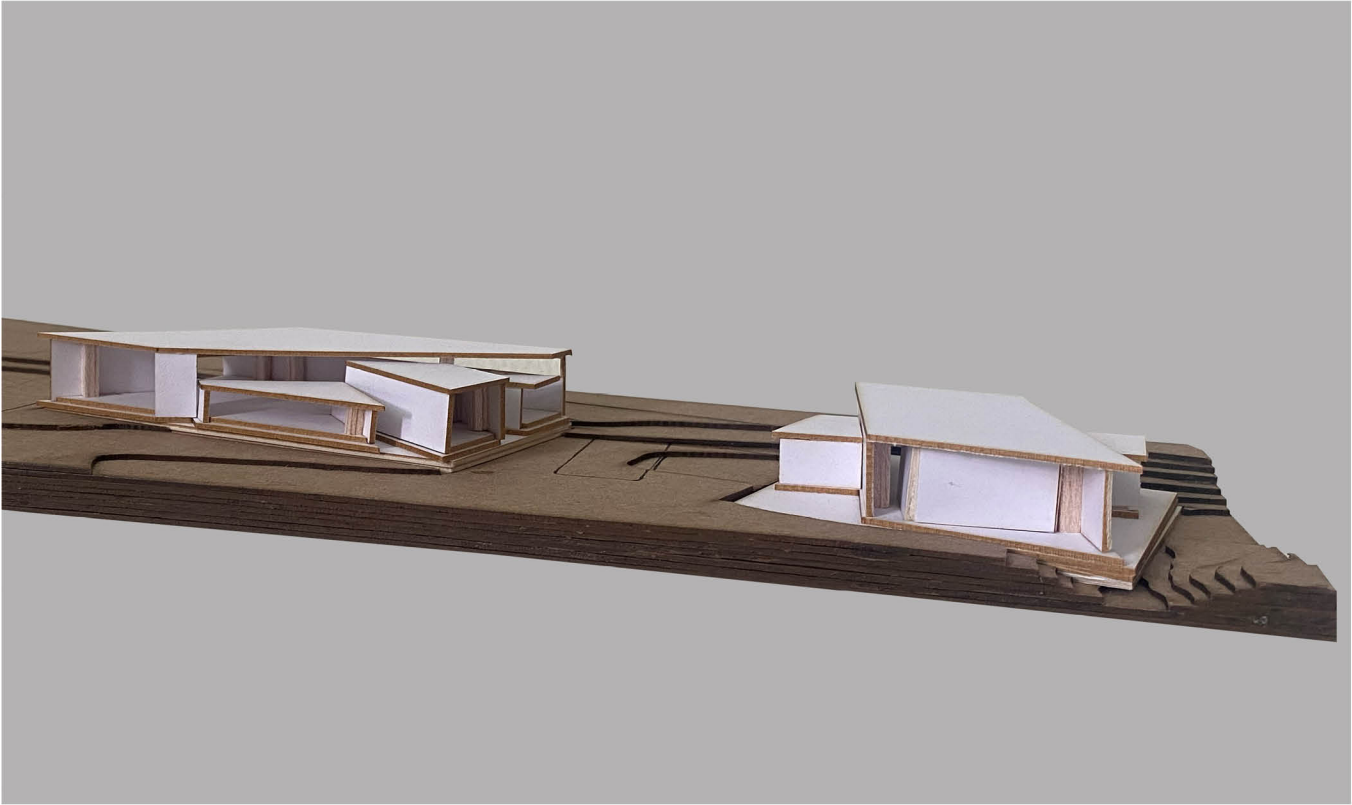
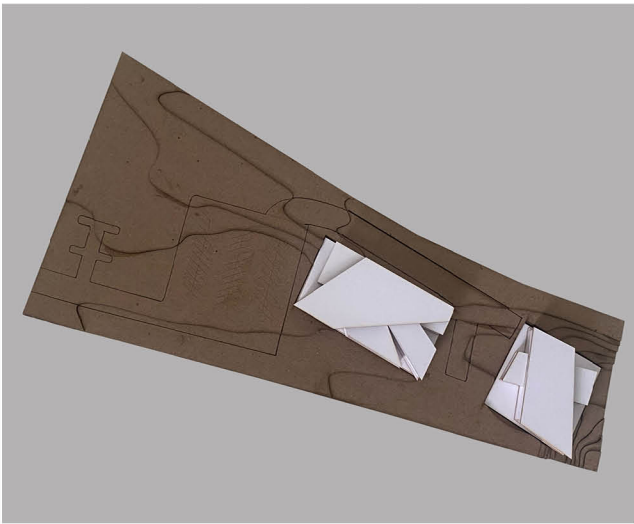
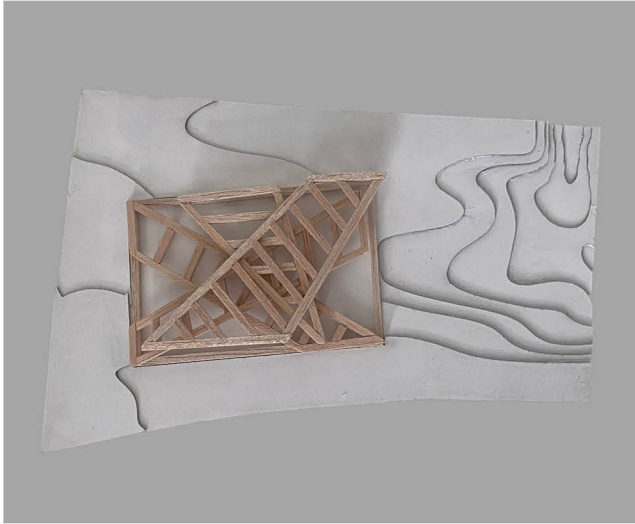
In section the buildings vast spatial volumes are exaggerated and allow for intersecting connections horizontally and vertically.







This model functions as a Parti to represent the crossing cultures like the crossing railroad tracks.



This model was used to exemplify the crossing of volumes representing the crossing of cultures.