

The Regenerative Path for Marketing

As a founder myself, I know what it's like to build something with heart, vision, and limited resources. The pressure to grow quickly can make it easy to lose touch with your original intention. That's why we created **WE7** to help mission-driven companies grow sustainably, **without compromising their purpose.**

The **WE7 Regenerative Path™** is more than a framework it's a conscious growth journey, combining strategic clarity, AI-powered marketing support, and regenerative business design. Whether you're building in climate tech, circular economy, community, or social innovation, this path helps you **align values with visibility and purpose with profit.**



*"WE7 AI is pioneering a much-needed transformation in **marketing** for climate tech startups. Their commitment to sustainability, ethical growth, and innovation makes them a vital ally for any startup aiming to lead the green transition."*

Dr. Emre Eren Korkmaz

Oxford Centre for Technology and Development

The logo for WE7, featuring the letters "WE" in a light pink color and a superscripted "7" in a light blue color, all set against a dark teal background.

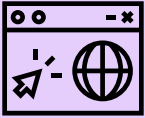
Problem:

81% of consumers say they must be able to trust a brand to buy from it. (*Edelman Trust Barometer*)

64% of Gen Z say they will pay more for sustainable products. (*First Insight Report*)

The Solutions

The **WE7 Regenerative Path™** offers startups a step-by-step framework that transforms overwhelm into clarity and intention into scalable action.



The WE7 Regenerative Path™

A proven 7-step framework that guides companies from purpose to profit consciously. Each step is designed to help founders clarify their mission, define their value, align behavior with intention, connect with the right audience, and generate healthy, sustainable revenue.



AI-Powered Weekly Marketing Plans

Your company receive intelligent, customized **marketing** plans each week including content ideas, campaign strategies, keyword suggestions, and platform guidance all rooted in the startup's purpose and aligned with sustainability goals. The result: less guesswork, more momentum.



SDG & ESG Integration by Design

Rather than treating sustainability as an afterthought, WE7 embeds SDG alignment and ESG principles directly into marketing and business planning. This creates a solid foundation for ethical growth, investor readiness, and measurable impact.



Flexible, Founder-Friendly Support

With tiered packages (Water, Air, Fire) and optional consultations, WE7 makes regenerative growth accessible at every stage. Founders can choose the level of support they need from DIY guidance to full strategic partnership without compromising their vision or budget.

Methodology: The WE7 Regenerative Path™



01

WE7 Regenerative Path™



02

Sustainable Development Goals



03

Inner Development Goals

Transparent & Flexible Pricing Options

Water

\$13,000

Flow into

Purpose Perfect for early-stage founders who want to clarify their mission and build strong foundations.

Fire

\$28,500

Lift Off

with Strategy For startups ready to develop aligned marketing strategies and conscious growth plans.

FIRE

Contact Us

Ignite Your Impact

A high-touch experience for startups ready to scale sustainably with conscious marketing leadership.

Custom Package

Tailored Pricing

For unique or complex projects, we offer custom packages based on your specific requirements and goals.

DUYGU@WE7.AI