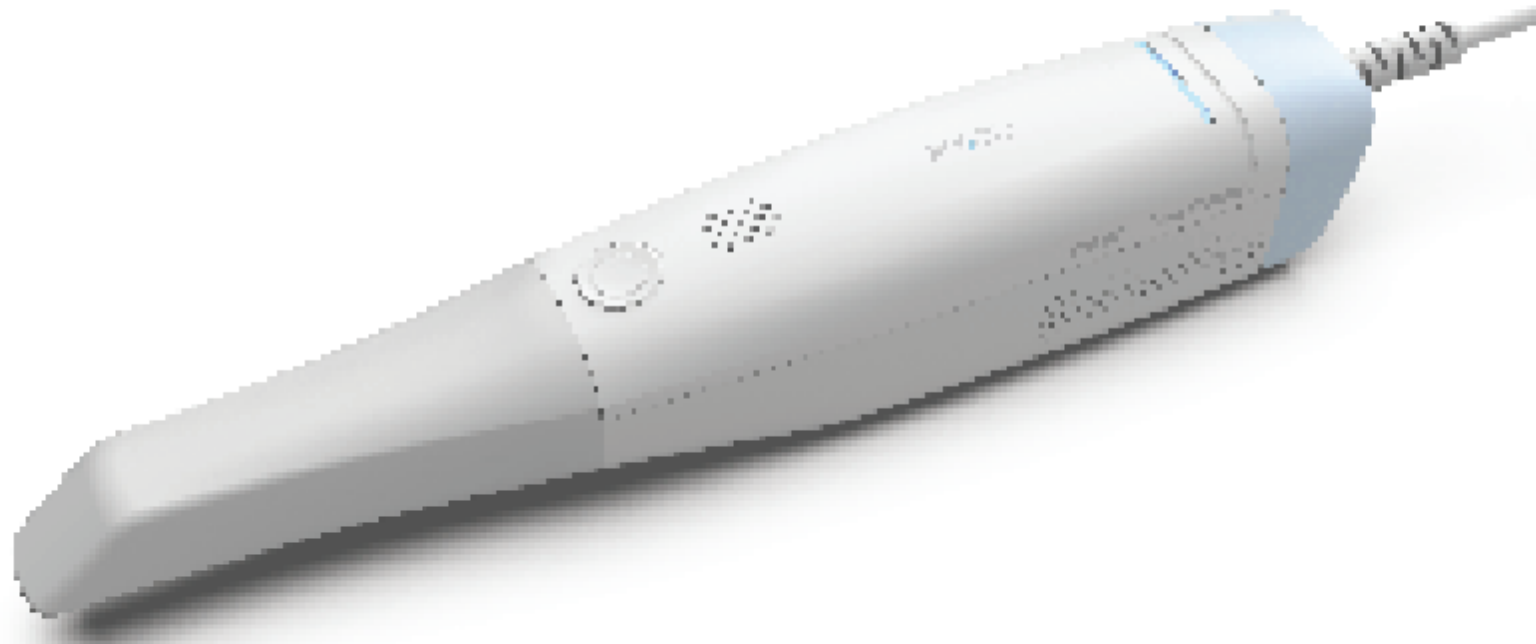


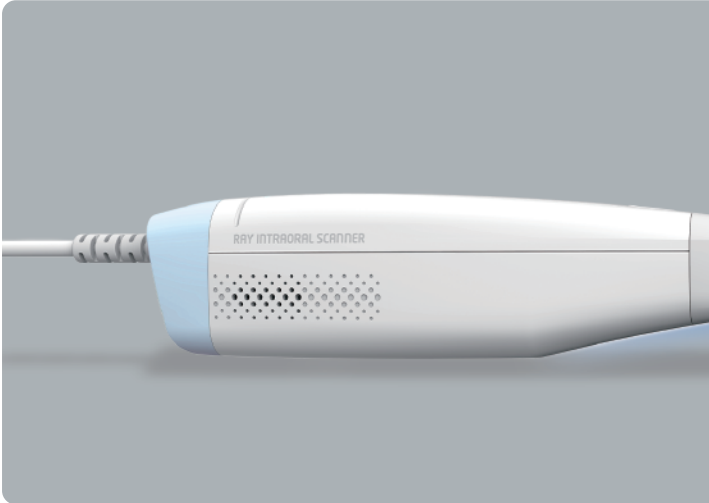
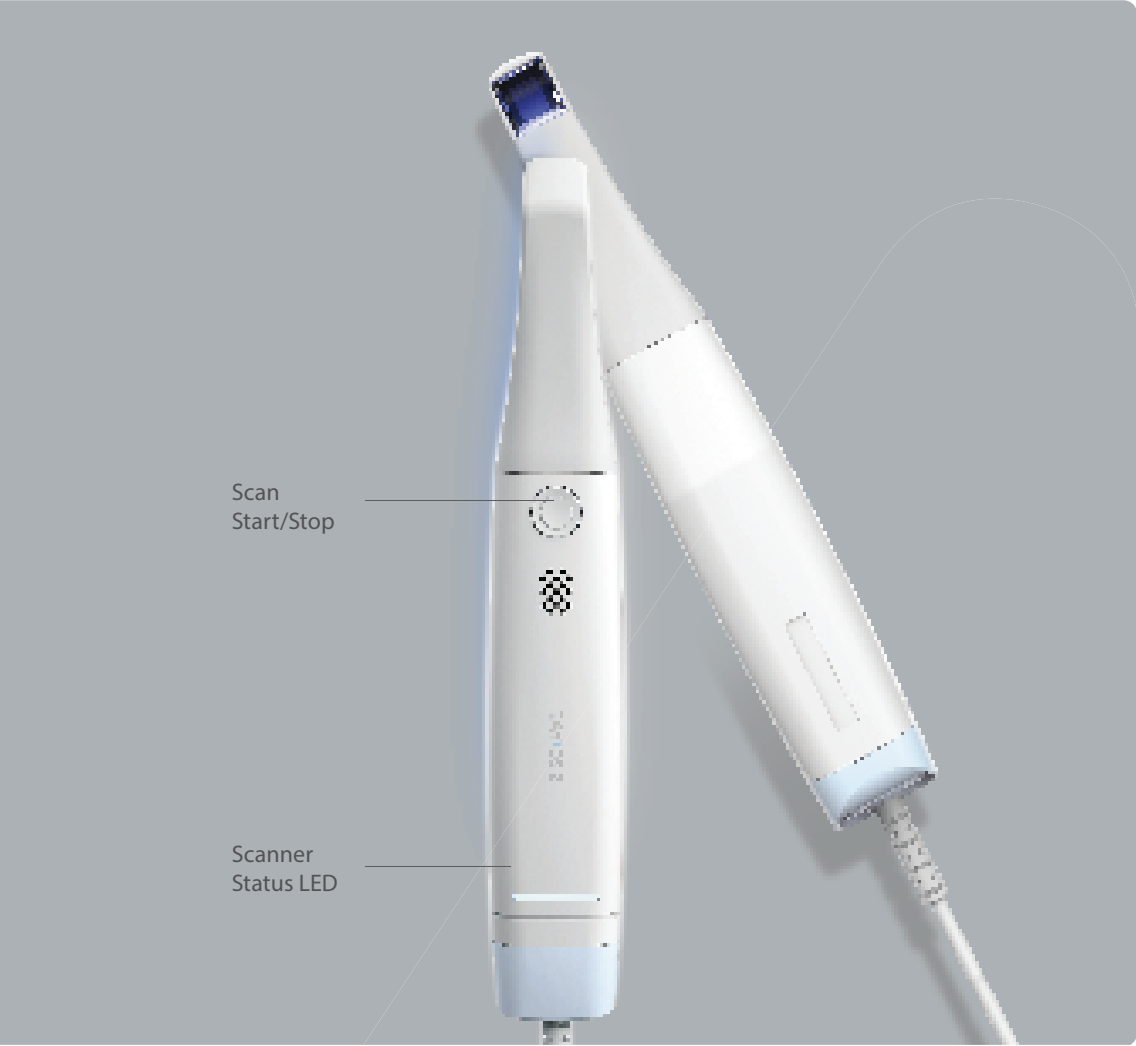
Ray

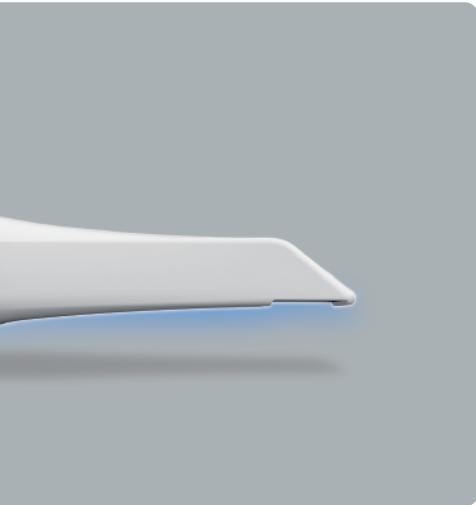
# RAYiOS

INTRAORAL SCANNER



# The First Move into Digital Dentistry, RAYiOS





## HIGH USABILITY

### ① Open System

It supports an open type file format that is compatible with any device and allows collaboration with dental labs and other partners.

### ② Ergonomic Design

Stable center of gravity design and grip feeling for user consideration make scanning more comfortable.

### ③ No Powder

You can scan comfortably without powder.

## PRECISE EXPRESSION

### ① Full Color

It provides a real color scan that can distinguish between teeth and soft tissue in the mouth.

### ② HD Scanning

High-definition 3D scanning technology is applied to show even the details of margin lines.

### ③ Accurate Scanning

The advanced technology enables precise scanning.

# For your Best Digital Experience, RAYiOS

---

## Accurate Scanning

For best result, precision is a top priority from scanning to design and milling.

## Fast Processing

Save time for patients and staff with ONE-DAY treatment.

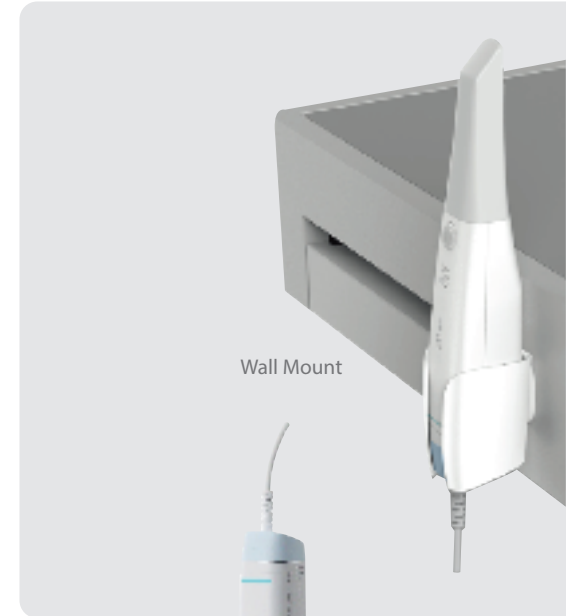
---

## High Compatibility

Introduce digital treatment with advanced imaging systems and equipments designed for dental clinics and labs.



Cradle



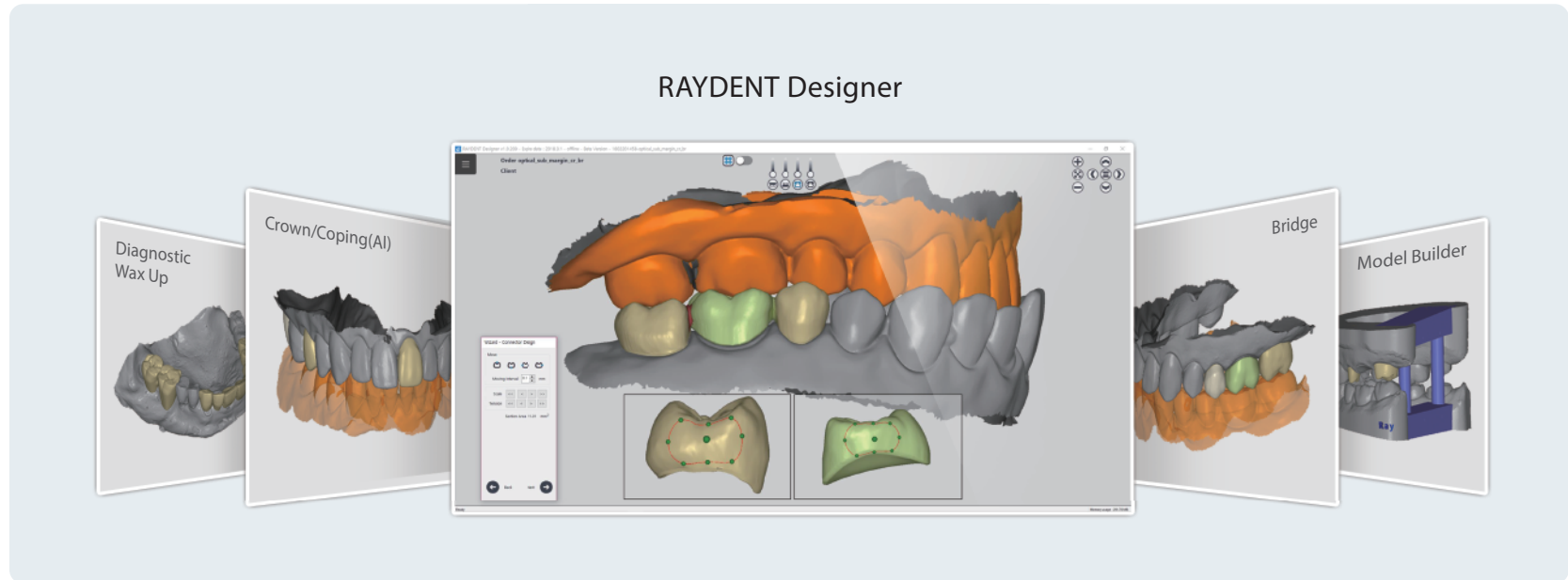
Wall Mount



Calibration Kit

# RAYDENT Designer

Using Ray CAD Software, optimized for chairside solution, makes a digital treatment plan more simple and easier.



## Easy & Fast Patient-Tailored Tooth Design

It is easy to design all kind of tooth shapes such as incisor, premolar and molar.

## Manual/Automatic Occlusal Adjustment

Occlusal adjustment is available manually or automatically at user's convenience.

## Seamless Workflow

It works smoothly with various CAM systems, including 3D Printer and Milling Machine.

## Various Prosthetic Design

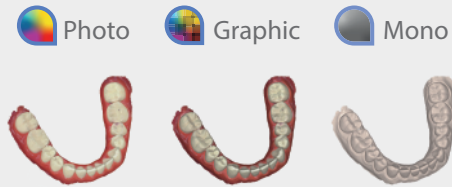
RAYDENT Designer provides various design functions including Crown, Bridge, Inlay/Onlay, Provisional Crown & Bridge, Veneer, Coping, Diagnostic wax up and Model Builder.

# Expand Realm of Treatment Possibilities with RAYiOS



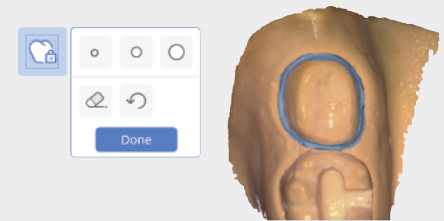
## Snapshot & Camera

You can use the snapshot and photo functions to store data and send it to where you need it. This can be useful for patient counseling and charting.



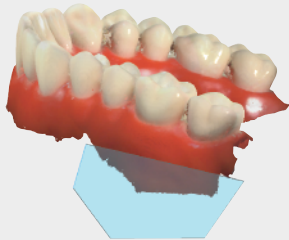
## Color mode

By selecting various color modes (Photo, Graphic, Mono), you can check the image of the scanned data more clearly and accurately.



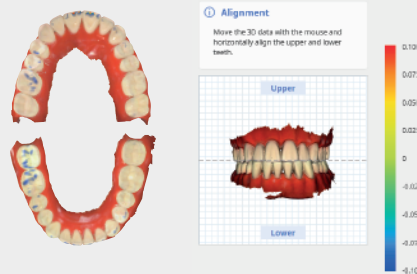
## Lock surface

Use when data in a selected area needs to be preserved so that it is not affected by further scans by locking the selected area through the lock surface function.



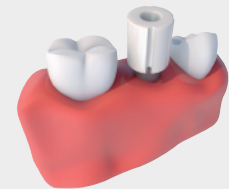
## Trim

You can modify the scan data quickly and easily.



## Bite Analysis

Analyze occlusions using scan data.



## Implant

Scan body and Scan post for implant treatment can be scanned.

## Specifications

Field of View	14 x 14 mm
Depth of Field	16 mm
Accuracy	20 um ( Single Crown )
Scanning Method	Digital structured light projection
Acquisition	Realtime video process scanning
Weight	280 g ( Only handpiece weight )
Dimensions	263.5 x 43 x 49.4 mm
Tip ( Autoclavable )	Autoclave 100 times

## PC Requirements

CPU	Intel Core i9-11900H
RAM	32 GB
GPU	NVIDIA GeForece RTX 3070 8 GB
OS	Windows 10 Pro 64 bit





 Ray co.,Ltd.

HQ. Two Sun World Building 12th Floor 221, Pangyoyeok-ro  
Seongnam-si, 13494 South Korea  
Tel. +82.031.605.1000 Email. ray\_sales@raymedical.co.kr  
www.raymedical.com

Design and specifications are subject to change without notice.

Scan QR Code  
RAY Informarion

