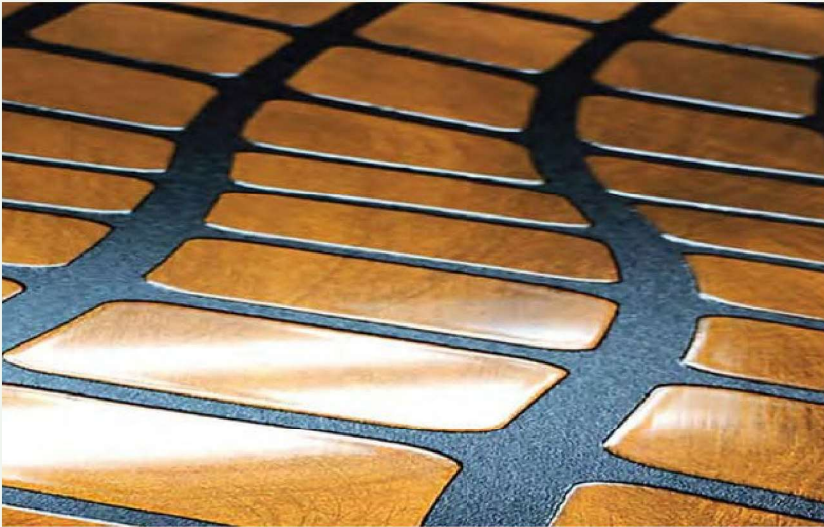


# Accent Walls: Transforming Spaces into Art Pieces



When it comes to bedroom design, the mirror is often an unsung hero. It enhances the room's aesthetics, adds depth, and plays a vital role in your daily routine. But what if we told you that a mirror could do more than just reflect? It can become the focal point, the statement piece that ties the entire room together.

## **The Perfect Placement**

The first step in making your mirror a centerpiece is choosing the right spot. Consider placing it above your bed's headboard, where it can create a stunning focal point. Alternatively, position it opposite a window to maximize natural light and make the room feel more spacious. A full-length mirror on a wall or leaning against it can also draw the eye and add a touch of elegance.



**Accent walls also balances room proportions and highlights architectural features, providing a cost-effective and practical way to elevate a space's overall aesthetics.**

# Bring Sunshine into Your Living Room



Introducing a mirror that brings the warmth and brilliance of sunshine into your living room. With its radiant, golden-hued frame, this mirror instantly becomes the centerpiece, casting a warm and inviting glow throughout the space. Its reflective surface not only amplifies natural light but also adds a sense of depth, making your living room feel more open and airy.

This stunning mirror is a perfect blend of art and function, seamlessly enhancing any decor with its vibrant, sun-kissed design. Positioned above a sofa or console table, it illuminates the room with a touch of elegance and a hint of warmth, transforming your living area into a cozy, stylish retreat. Bring home this mirror and let it reflect the sunny side of your impeccable taste.



OUR EXQUISITE GLASS PRODUCTS ARE DESIGNED TO ELEVATE EVERY CORNER OF YOUR HOME WITH SOPHISTICATION AND STYLE. FROM COFFEE TABLES AND SIDEBORD DOORS TO MIRRORS AND WALL PANELING, THE POSSIBILITIES ARE ENDLESS.

**Redefine your living space with endless possibilities and unmatched elegance.**

- COFFEE TABLES
- SIDEBORD DOORS
- MIRRORS
- WALL PANELING
- ROOM DIVIDERS
- INTERIOR DOORS
- CLOSET DOORS
- CABINET DOORS
- SHOWER
- COUNTERTOP BASES
- KITCHEN BACKSPLASHES
- STAIRS RISERS
- RAILINGS
- AND MANY MORE.

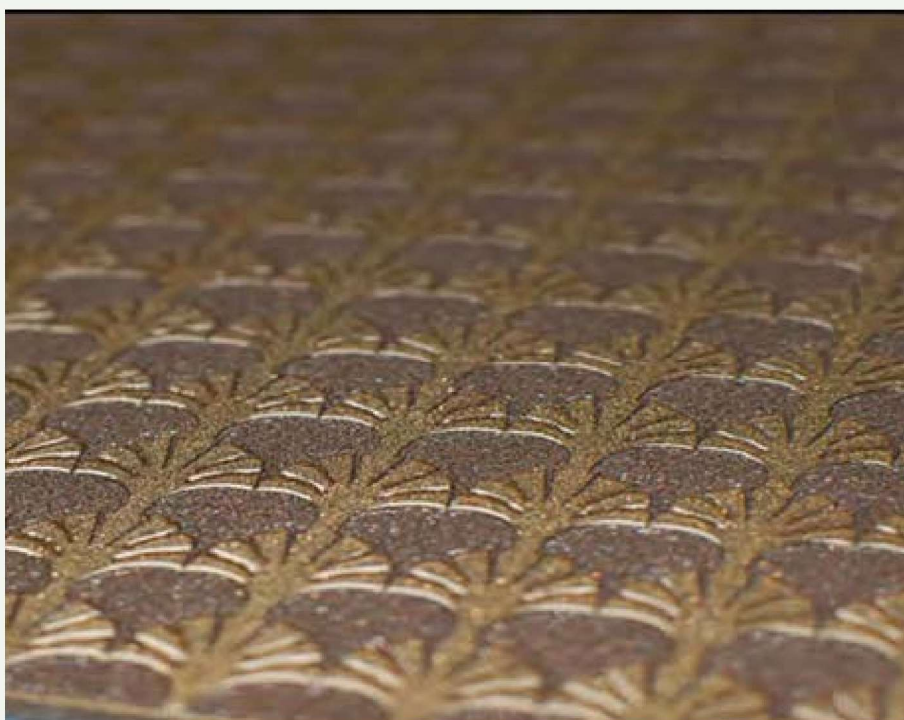
# A Fusion of Functionality and Style

Patterns etched or embedded within the glass add a layer of visual interest, creating a sophisticated look that enhances the overall ambiance of your home. Whether you prefer intricate floral motifs, modern geometric shapes, or custom designs, patterned glass can be tailored to match your personal taste and the decor of your home.

## **Safety Meets Aesthetics**

Safety is a crucial consideration for staircases, and glass is a surprisingly robust and secure material when properly installed. Tempered or laminated glass is designed to be strong and shatter-resistant, ensuring that your staircase is not only beautiful but also safe.

It can complement a variety of architectural styles, from minimalist modern homes to classic and traditional settings.



# Elevate Your Staircase with Exquisite Glass Patterns.

Staircases are often overlooked when it comes to interior design, yet they hold immense potential to transform the aesthetic of a home. By incorporating exquisite glass patterns, you can elevate your staircase from a mere functional element to a stunning focal point. Glass adds a touch of elegance, creating an airy, open feel while infusing the space with light and artistry.

Glass staircases, especially those with patterned designs, seamlessly blend functionality with style. The transparent nature of glass allows for the flow of light, brightening up the entire stairway and making it appear more spacious. The addition of patterns can also provide a subtle grip, reducing the risk of slips while maintaining the sleek, polished look that glass offers.



## Creating a Statement Piece

A patterned glass staircase can serve as a stunning statement piece in any home. It offers a contemporary twist to traditional stair designs, making a bold impression on guests. The patterns catch and reflect light in captivating ways, creating a dynamic interplay of shadows and highlights that can change throughout the day. This transformative quality allows your staircase to evolve with the lighting, always presenting a fresh and engaging appearance.

## Versatility in Design

One of the significant advantages of glass is its versatility. Glass patterns can be customized to reflect your unique style, whether you're looking for something understated and elegant or bold and dramatic. Additionally, glass pairs well with other materials such as wood, metal, and stone, allowing you to create a cohesive and harmonious design.



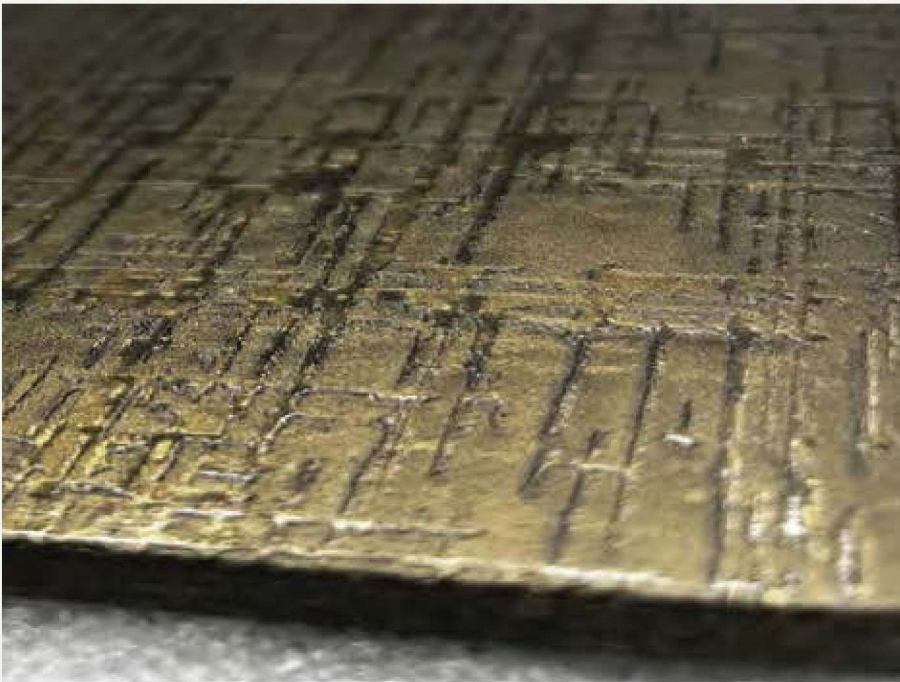


## Architectural Elegance

The Linear Rain is an exquisite piece combines artistic expression with architectural finesse, creating a stunning focal point that enhances any space with its unique texture and reflective qualities.

## Architectural Beauty

The pattern is meticulously crafted to emulate the serene and dynamic essence of falling rain. Its intricate design features linear textures that create a mesmerizing interplay of light and shadow, adding depth and dimension to the mirror. This architectural element transforms the mirror into more than just a functional piece; it becomes a work of art that captures the eye and imagination.



The reflective surface of the mirror amplifies natural light, creating a brighter and more inviting atmosphere. The textured pattern adds a layer of visual interest, making it a captivating centerpiece that complements the surrounding decor.

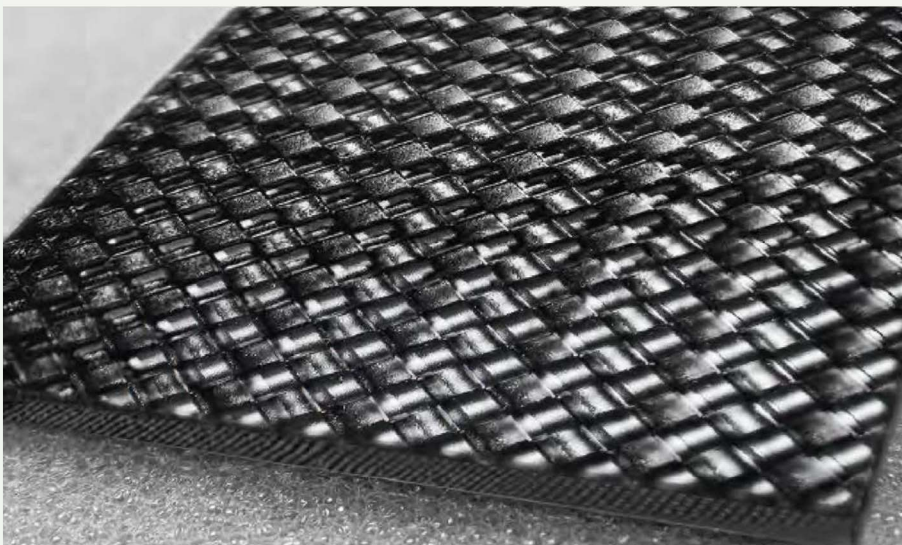
# From Rain to Reflection



# Transforming Spaces: The Art of Using Patterned Glass

# Glass transforms spaces, blending light and design into elegance.

In the realm of interior design, creating distinct zones within a space without sacrificing light or openness can be a challenging feat. Enter patterned glass: a versatile material that is revolutionizing the way we think about room paneling and dividers. From enhancing privacy to adding a touch of elegance, patterned glass offers a unique solution that seamlessly integrates functionality with aesthetic appeal.



## The Allure of Patterned Glass

Patterned glass is not just functional but also visually striking. With a variety of designs ranging from subtle textures to bold geometric patterns, this material allows you to customize your space according to your personal style. The patterns can diffuse light beautifully, creating a dynamic interplay of shadows and brightness that can enhance the ambiance of any room.

## Enhancing Privacy

Patterned glass is an excellent choice for areas where privacy is desired but openness is still important. Unlike traditional opaque materials, patterned glass can obscure views while still allowing light to pass through. This makes it ideal for applications like bathroom dividers, office partitions, or even as a feature wall in a living space. The degree of privacy can be tailored to your needs, from frosted designs that offer a soft blur to intricate patterns that provide a more substantial barrier.





### **Adding Elegance and Texture**

The aesthetic appeal of patterned glass goes beyond its functionality. The texture and design can serve as a statement piece in your décor. For example, a beautifully etched glass panel can act as a focal point in a room, drawing the eye and adding depth to the space. Additionally, the interplay of light through patterned glass can create interesting visual effects, making it a dynamic element in any design scheme.

### **Versatility in Design**

Patterned glass can be used in various forms, from fixed panels and sliding doors to folding screens and room dividers. This versatility makes it suitable for a wide range of applications, including residential, commercial, and hospitality settings. The material can also be combined with other elements, such as wood or metal frames, to enhance its visual impact and functionality.

Patterned glass offers a sophisticated solution for room paneling and dividers, blending functionality with style. Its ability to define spaces, enhance privacy, and add a touch of elegance makes it a versatile choice for modern interiors. By incorporating patterned glass into your design, you can create spaces that are not only visually appealing but also practical and functional.

**“Glass is not just a material; it’s a design element that shapes and transforms the space, blending transparency with texture to create dynamic and sophisticated interiors.”**

# Make a Statement with Our Stunning Mirror

---



Introducing a mirror that transforms your living room into a masterpiece of modern design. The bold, circular frame, with its vibrant and unique blend of hues, draws immediate attention and becomes the focal point of the room. Its reflective surface not only brightens the space but also adds depth, making your living room appear larger and more inviting.

The artistic quality of this mirror enhances the elegance of your decor, seamlessly blending with both contemporary and classic styles. Positioned above a sofa or console table, it captures the essence of sophistication while providing a functional element. This mirror is more than a decorative piece; it's a statement of style and a reflection of your impeccable taste.