

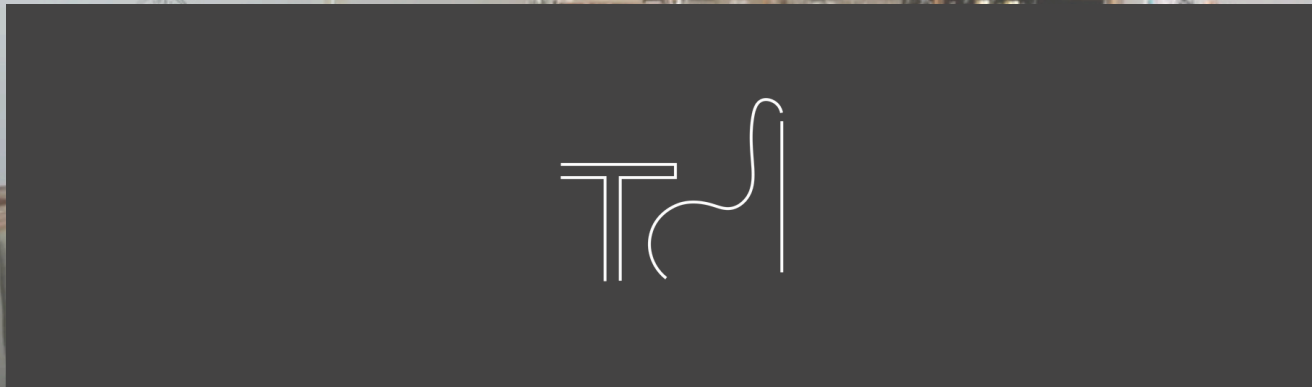
PROJECT NAME: Lucia - Italian Bistro


| ADDRESS: Glenwood Park, Atlanta, GA

| SQUARE FOOTAGE: 1814 sqft

| PROJECT TYPE: Restaurant - Commercial- Pre-Construction (2025)

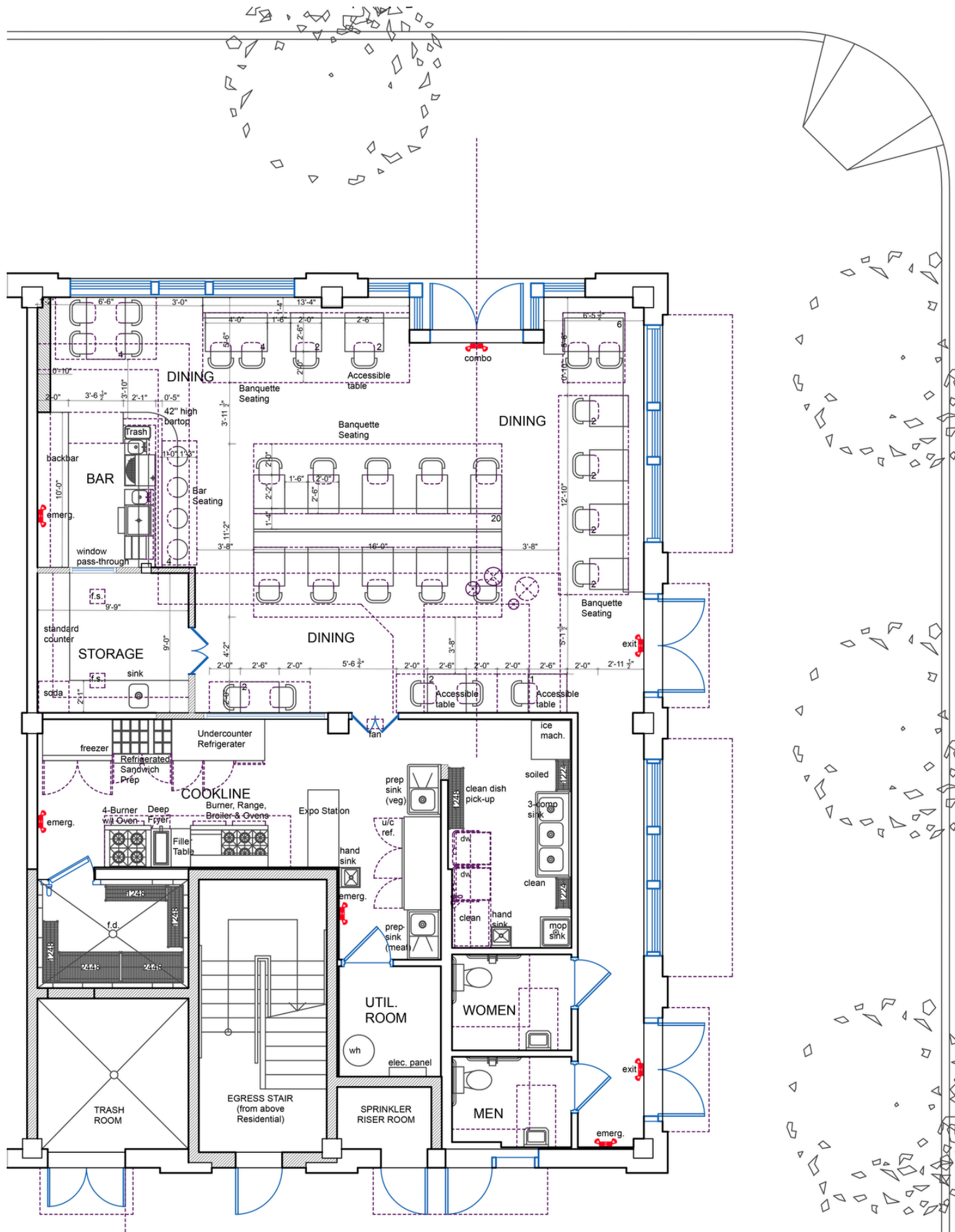
LUCIA - ITALIAN BISTRO





Lucia is an adaptive reuse project that transforms a former casual dining space into a character-rich Italian bistro. Located in Glenwood Park, the design leverages the existing kitchen infrastructure to streamline construction while fully reworking the front-of-house layout. The result is a cohesive dining environment that balances efficiency, spatial rhythm, and material texture.

The primary challenge was to increase seating capacity while maintaining accessibility and egress compliance. Working closely with the client, the team produced a detailed, stamped drawing set that met all permitting standards through the City of Atlanta. The approach blends pragmatic constraints with thoughtful design moves that elevate the overall guest experience.



1

PROPOSED FLOOR PLAN

SCALE: 1/4" = 1'-0"

1,814 SF (GROSS)

SEATING:
 DINING: 51 SEATS (3 ACCESSIBLE)
 BAR: 4 SEATS

TOTAL: 55 SEATS (TOTAL)

BAR AREA STRATEGY



A defining feature is the redesigned bar area. The bar wall was extended to provide architectural weight and visual orientation, supporting custom brass-accented shelving. Below, green vertical tiles and a textured bar face create a tactile contrast. A recessed soffit above embeds warm lighting and frames the bar zone with spatial precision. This composition introduces hierarchy while preserving openness across the room.

 A material and atmosphere storyboard for the bar area. It includes:

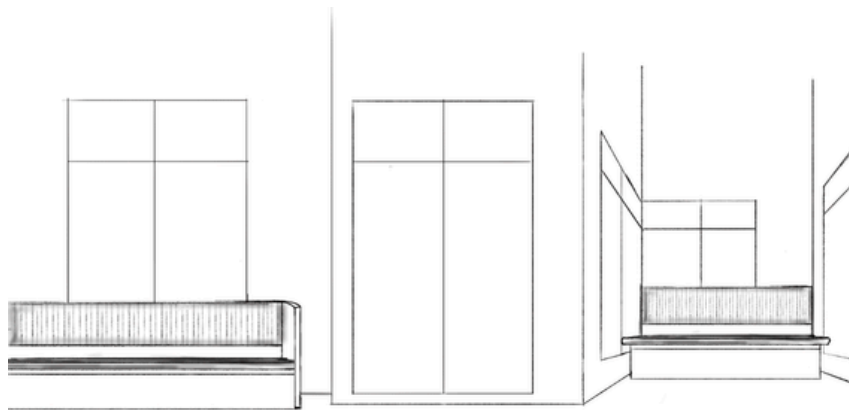
- Concrete Bar Top**: A dark grey rectangular swatch.
- Back Bar Shelf**: A photograph of a back bar shelving unit with bottles. Below it, the text reads: "Back Bar Shelf 94.5" W x 9.8" D x 49.2" H".
- Sapphire Bar Tile + Matching Pencil**: Two vertical rectangular swatches, one dark blue and one lighter blue.
- MACADAMIA**: A light brown swatch with a rounded end. Below it, the text reads: "MACADAMIA HGSW 6142 ALL WALLS + TRIMS".
- COCOON**: A dark brown swatch with a rounded end. Below it, the text reads: "COCOON HGSW 6173 BACK BAR + DROP CEILINGS".
- Terracotta Epoxy Reference**: A photograph of a polished floor reflecting light.
- cabana**: A reddish-brown swatch.
- starfish**: A reddish-brown swatch.
- ginger**: A reddish-brown swatch.
- mango**: A reddish-brown swatch.

MATERIAL & ATMOSPHERE STORYBOARD

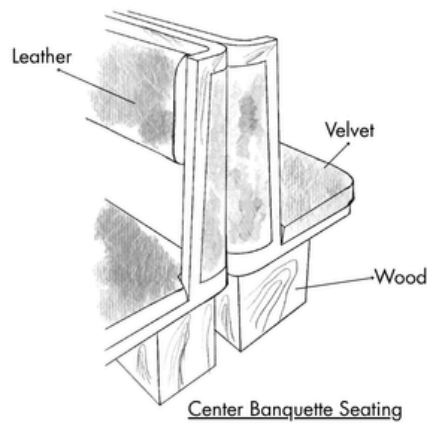
This storyboard shows the materials and finishes that set the character of the bar – concrete, sapphire tiles, terracotta shades and brass details come together to create a warm and cohesive atmosphere.

SEATING STRATEGY

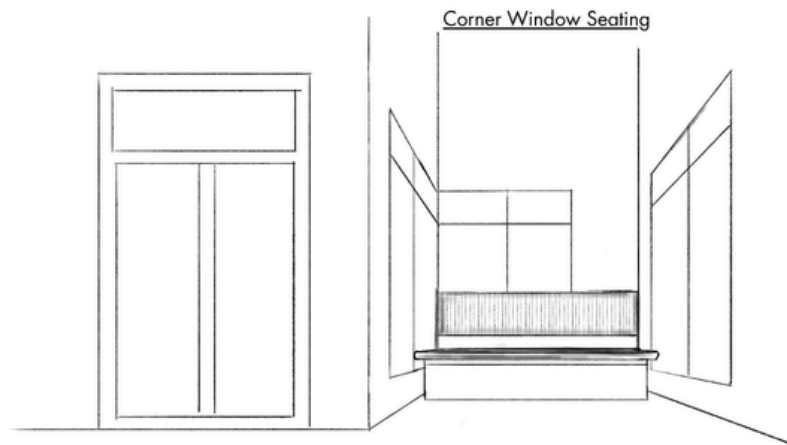
Seating strategy plays a key role in defining the atmosphere. Continuous window-side banquettes soften the perimeter and improve spatial efficiency, while L-shaped corner banquettes utilize otherwise lost space. At the center, back-to-back banquettes clad in wood are upholstered in mixed textures (leather and velvet) adding a layer of craft and visual depth. Custom millwork and clear communication drawings ensured seamless coordination with contractors throughout.



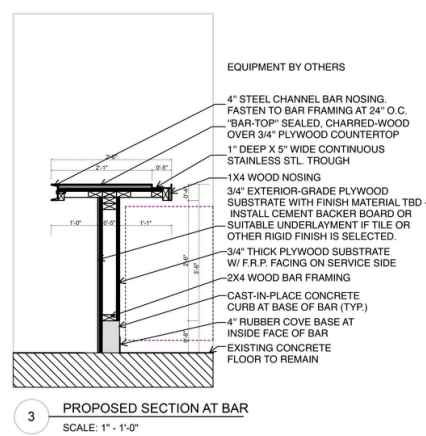
Window Seating



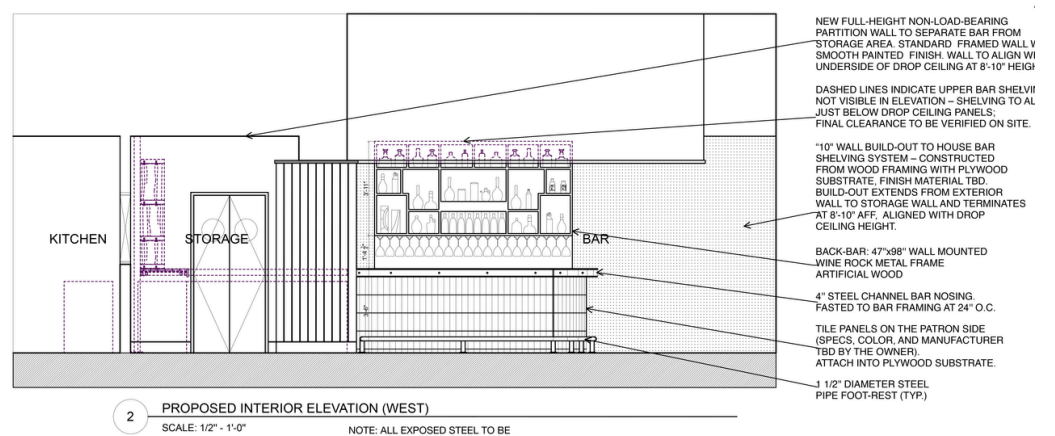
Center Banquette Seating



Corner Window Seating



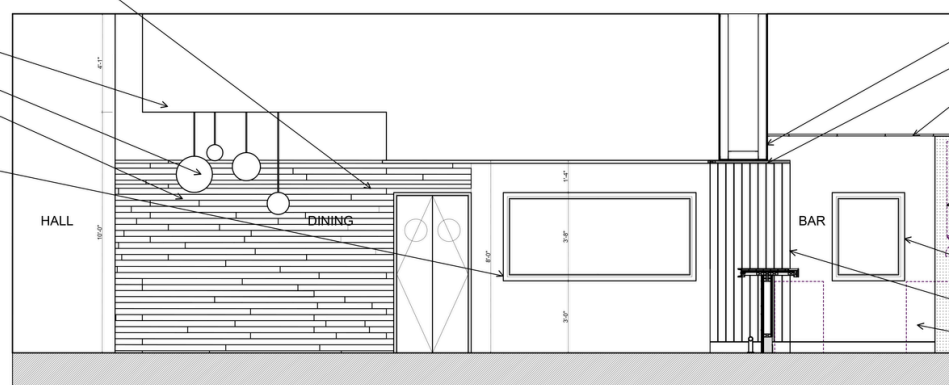
3 PROPOSED SECTION AT BAR
SCALE: 1" = 1'-0"



2 PROPOSED INTERIOR ELEVATION (WEST)
SCALE: 1/2" = 1'-0"

NOTE: ALL EXPOSED STEEL TO BE CLEAR SEALED BLANKED STEEL FINISH. GRIND WELD SMOOTHS PRIOR TO APPLYING CHEMICAL FINISH TREATMENT.

EXISTING "FAUX WOOD" CERAMIC TILE TO REMAIN IN LOCATION AT SERVICE COUNTER AND CORRIDOR TO RESTROOM.
PAINTED GYPSUM BOUARD SOFFITS TO UNDERSIDE OF EXISTING CEILING
DECORATIVE GLOBE PENDANTS
EXISTING FAUX WOOD WALL PANELS TO REMAIN
EXISTING OPENING TO BE REDUCED AND FITTED WITH FIXED CLEAR TEMPERED GLASS PANELS IN PAINTED METAL FRAME. FINAL PANEL DIMENSIONS AND FRAMING TO BE FIELD VERIFIED.



1 PROPOSED INTERIOR ELEVATION (SOUTH)
SCALE: 1/2" = 1'-0"

NOTE: ALL EXPOSED STEEL TO BE CLEAR SEALED BLANKED STEEL FINISH. GRIND WELD SMOOTHS PRIOR TO APPLYING CHEMICAL FINISH TREATMENT.

FINISH NOTES:

NOTE #1: IN COMPLIANCE WITH SECTION 13.3.3 (2018 NFPA 101 LSC), ALL INTERIOR WALL AND CEILING MATERIAL FINISHES WITHIN THE TENANT SPACE SHALL BE CLASS A, CLASS B, OR CLASS C (OCCUPANT LOAD FEWER THAN 300).
NOTE #2: THERE ARE NO FABRICS OR TEXTILES UTILIZED IN THE INTERIOR OF THE PROPOSED RESTAURANT SPACE. ALL MATERIALS ARE NON-COMBUSTIBLE (CONCRETE, GYPSUM BOARD, TILE AND FAUX WOOD WALL TILE, WIPEABLE WALL PANELS (FRP), AND WIPEABLE CEILING TILES). ALL FINISHES ARE RATED WITH A CLASS "C" FINISH CLASSIFICATION OR BETTER (PER NFPA 101, 2018 EDITION).

PROJECT NAME: Lucia - Italian Bistro

| ADDRESS: Glenwood Park, Atlanta, GA


| SQUARE FOOTAGE: 1814 sqft

| PROJECT TYPE: Restaurant - Commercial- Pre-Construction (2025)

PHOTOGRAPHS



CONCLUSION

A photograph of a brick building with a sign for 'LUCIA ITALY'. The sign is white with a red circular logo containing the word 'LUCIA' and 'ITALY' around a map of Italy. The sign is mounted on a metal arm extending from the building. The building has a brick facade and a window with a white frame. The sky is blue with some bare trees visible in the background.

Lucia demonstrates how architectural clarity and tight coordination can transform a modest space into a neighborhood anchor—intimate, functional, and deeply personal in its execution.